

Veterinary Ultrasound



Introducing V6A

Professional elegant compact design digital portable ultrasound system for veterinary applications. V6A is our latest ultra light LCD model weighing only 13 pounds. This easy to use ultrasound system's image modes include tissue harmonic imaging, B, B+B, B+M, M, 4B. With its adjustable 5 frequency selection for each probe provides working frequency from 2.0 MHz to 12.0MHz (probe depending)



DIAGNOSTIC
Imaging Systems, Inc.

PO Box 3390, Rapid City SD 57709
2325 E St. Charles Street, Rapid City, SD 57703
1-800-346-9729 * 1-605-341-2433 * www.VetXray.com

Veterinary Ultrasound



Exclusive 12" Adjustable LCD

Elegant outline, only 6 kg weight and optional mobile trolley, V6A creates a comfortable working environment.

12" angle adjustable LCD, two transducer sockets, V6A minimizes your working fatigue.

Premium B/W ultrasound technologies, abundant software packages and professional veterinary transducers, V6A assists you in reaching new heights in veterinary applications.



Optional Mobile Trolley

Optional Transducers:

- C351, 6-2MHz/R50mm, Abdominal Convex Probe
- C543, 8-3MHz/R40mm, Abdominal, Pediatric Convex Probe
- C312, 5-2MHz/R15mm, Adult Cardiology Convex Probe
- C612, 9-4MHz/R13mm, Pediatric, Veterinary Convex Probe
- L761V, 11-5MHz/50mm, Vascular Small Parts Linear Probe
- L561V, 7-3MHz/50mm, Vascular Small Parts Linear Probe
- 6V5, 9-4MHz/R10.3mm, Endovaginal Probe
- L561V 7-3MHz/60mm, Linear Endocavity probe



Professional Veterinary Transducers

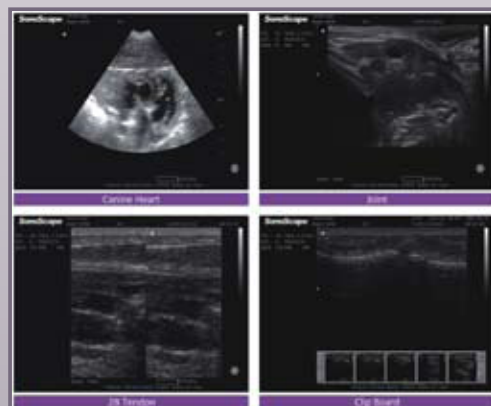
the **V6A**
makes ultrasound
diagnosis much
more reliable and
efficient

Features

- Built-in Linux system
- Full digital beam former
- High resolution 12" industrial-grade COLOR LCD
- The back-lit operator panel is ergonomically designed for comfortable & efficient ease of use even in dark room
- Built-in storage & archive for doctor's later review, making the analysis easier
- Tissue Harmonic Imaging
- Clipboard
- Cine Memory, Image memory, storage image measurable
- 8-steps TGC continuously adjustable 5 frequency-selection for each probe, working frequency from 2.0MHz to 12.0MHz (probe depending)
- Chroma: 8 types
- Imaging mode: Tissue harmonic Imaging, B, B+B, B+M, M, 4B
- Shortcuts Key
- One button optimization
- Integrated workstation
- PDF report
- Basic measurement, VET software package
- Two Probes connectors and selectable via keyboard and Hot swap
- Net weight: Approx 13 lbs (without probe)
- C351, 6-2MHz/R50mm, Abdominal Convex Probe

Optional Accessories:

- Trolley for V6A
- Footswitch for V6A for freeze
- External DVD-RW for storage
- DICOM function
- Travel suitcase
- Optional Biopsy guide for transducer
- Biopsy guide for C351 probe



DIAGNOSTIC
Imaging Systems, Inc.

1-800-346-9729

www.VetXray.com

Joe@VetXray.com