



EVERETT TRANSIT

Maintenance, Operations & Administration Building (MOAB)

Site Feasibility Study

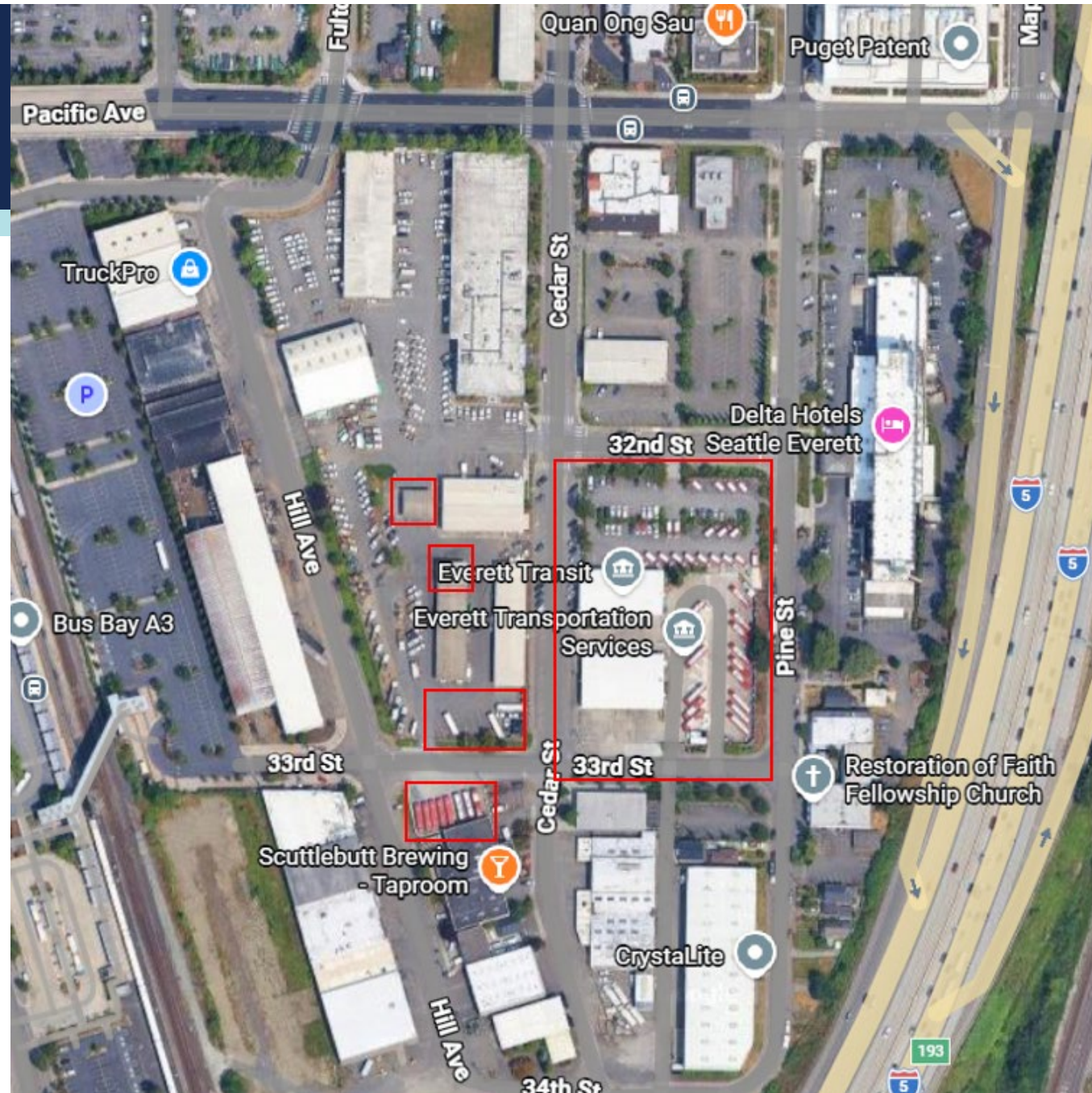


EVERETT

WASHINGTON

Current Operations

- Fixed-Route:
1.75 million trips in 2025
49 buses
- Paratransit:
90,000 trips in 2025
26 vans
- 160 employees



Key Project Objectives



- Identify replacement alternatives for the existing MOAB
- Identify a preferred location
- Select a preferred development concept

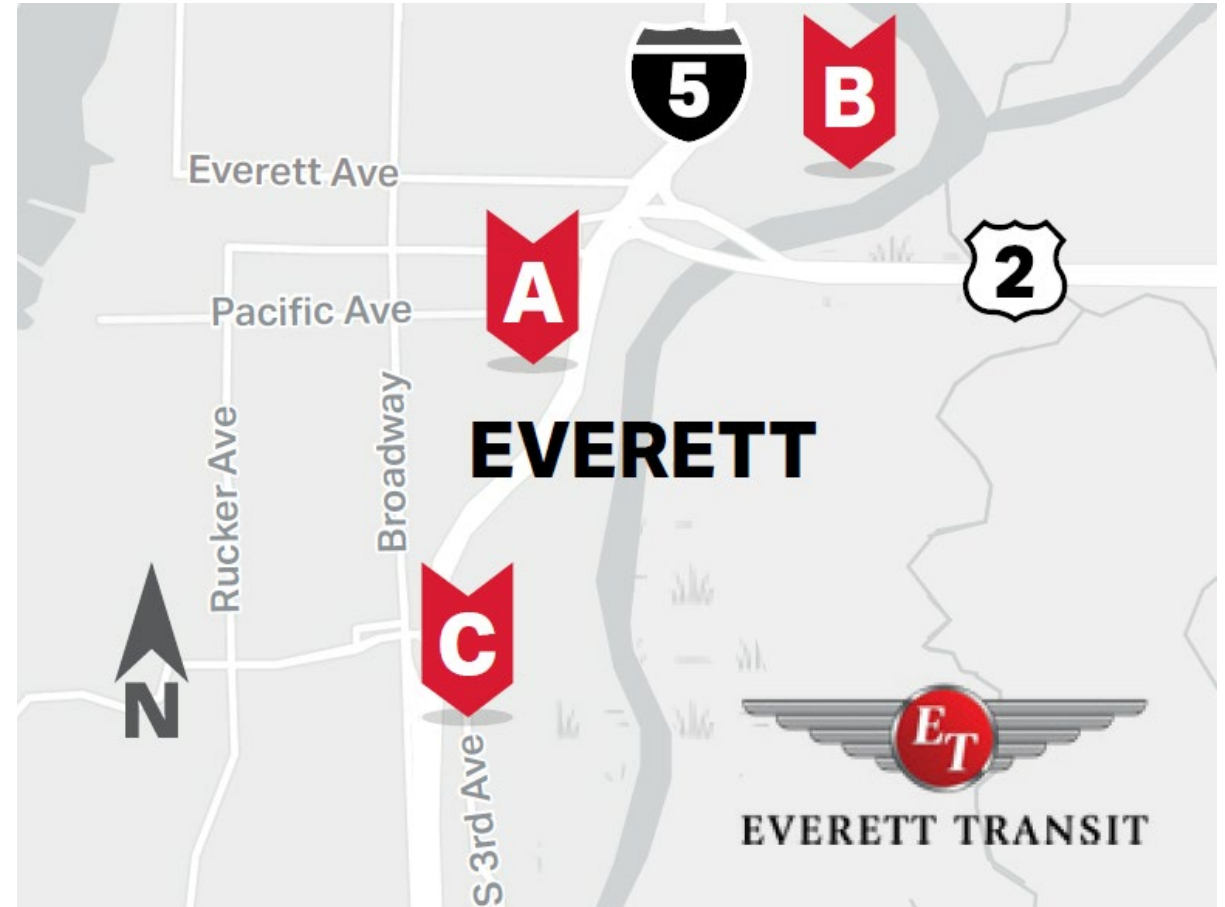
Considerations

- Plan for growth: 60 buses and 40 paratransit vehicles
- Combine maintenance, fueling, bus washing facilities, administration, and operations at a single location






Steps So Far

- Selected three feasible locations
- Confirmed facility program requirements
- Developed concept layouts
- Assessed environmental and operational constraints
- Drafted preliminary analysis of the sites



Selected Sites

	A	Current facility At 3225 Cedar Street
	B	Everett Point Industrial Center (EPIC) At about 4001 Railway Avenue
	C	Industrial property At 4225 South 3rd Avenue

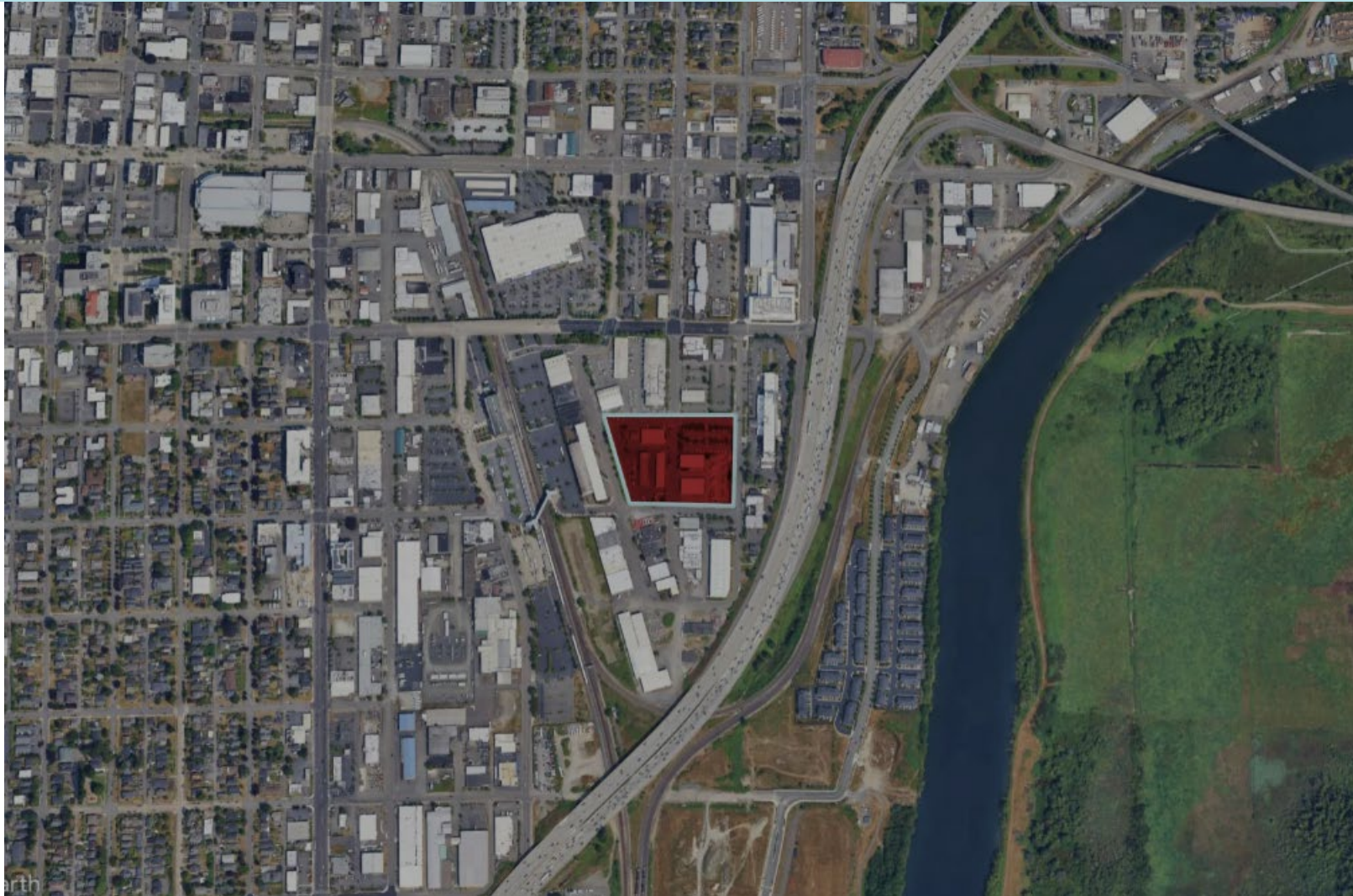
Feasibility Criteria

- Location
- Encumbrances
- Operations
- Public Input



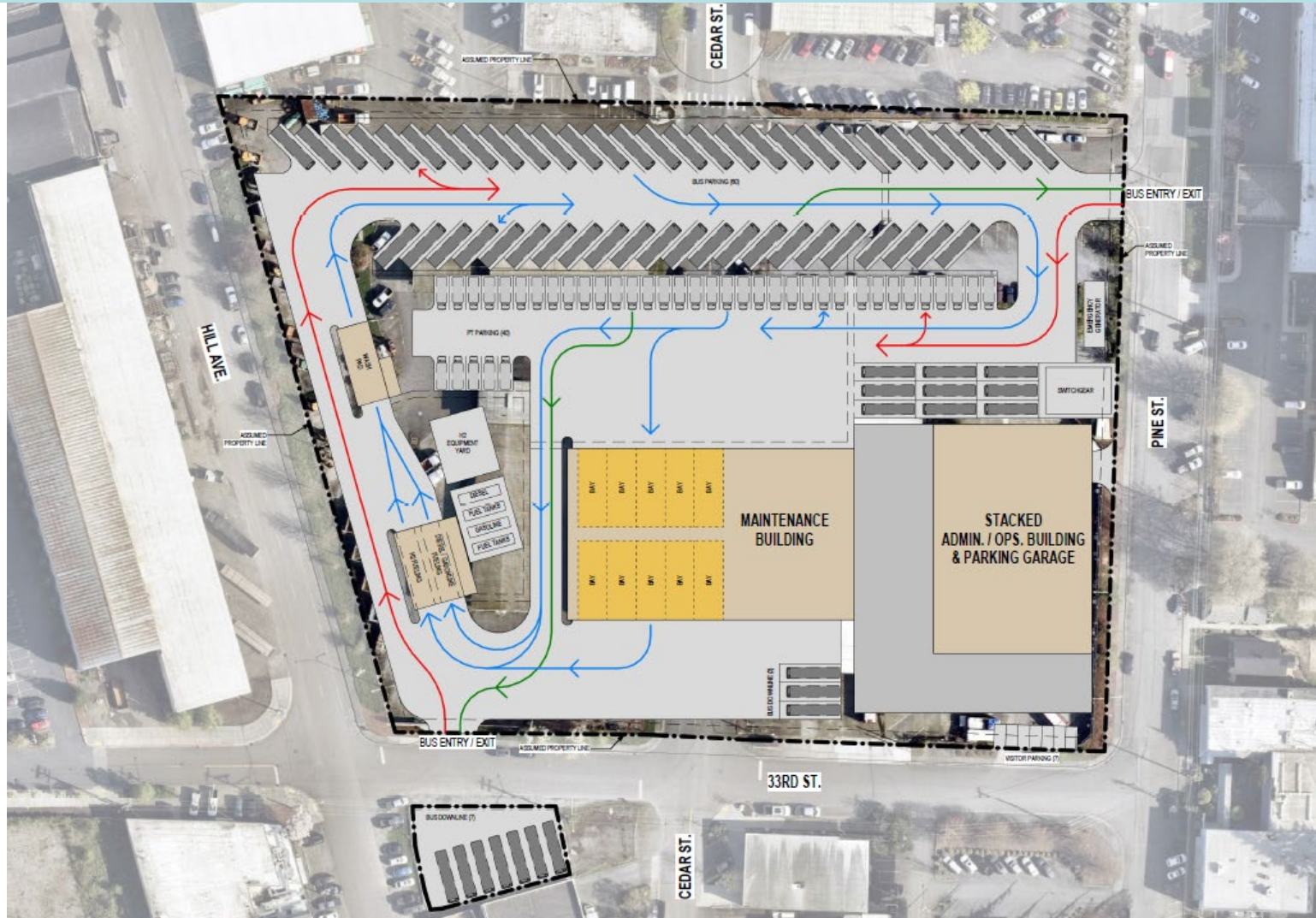


Cedar St. Site Concept Plan





Cedar St. Site Concept Plan

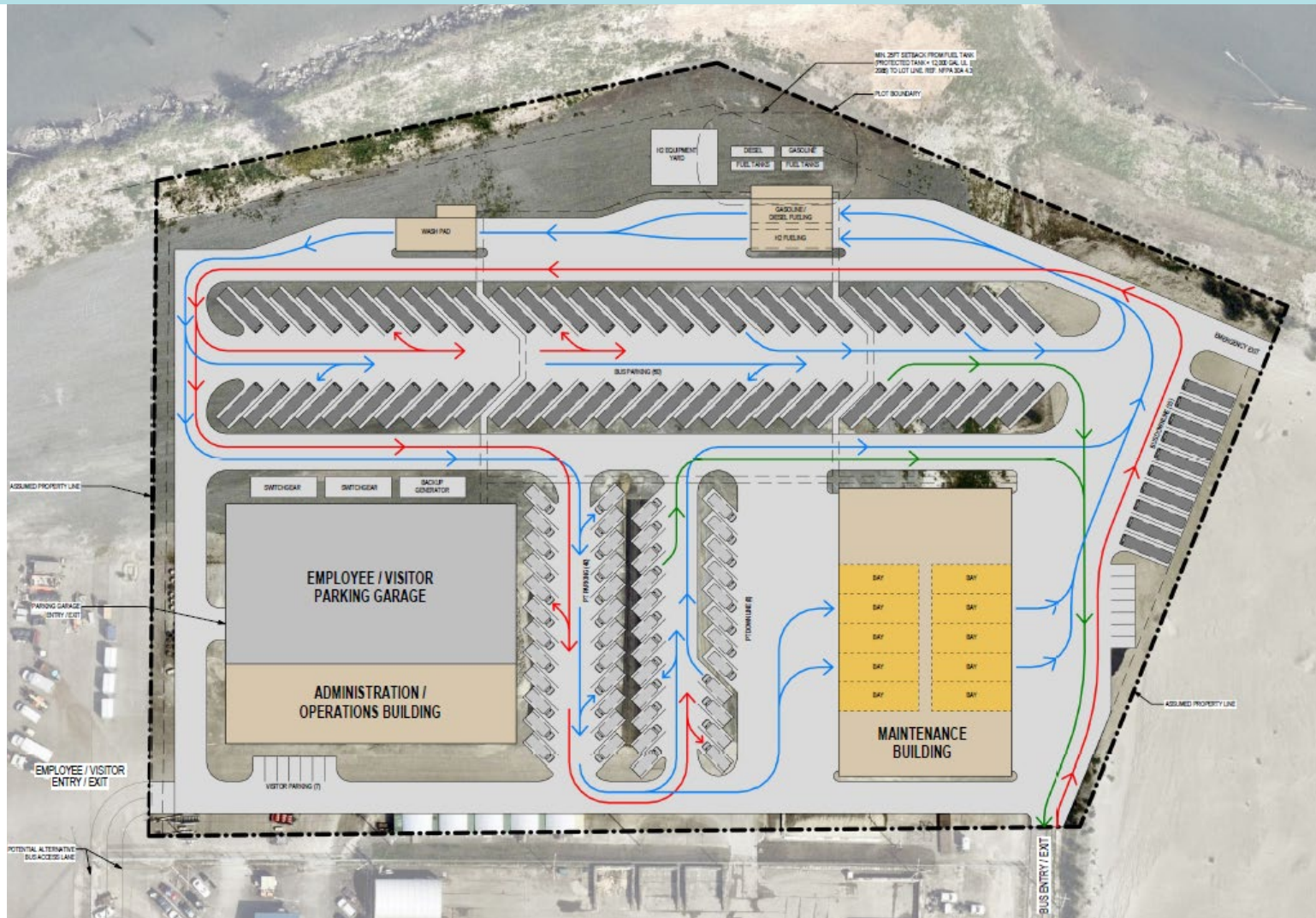


B EPIC Site Concept Plan





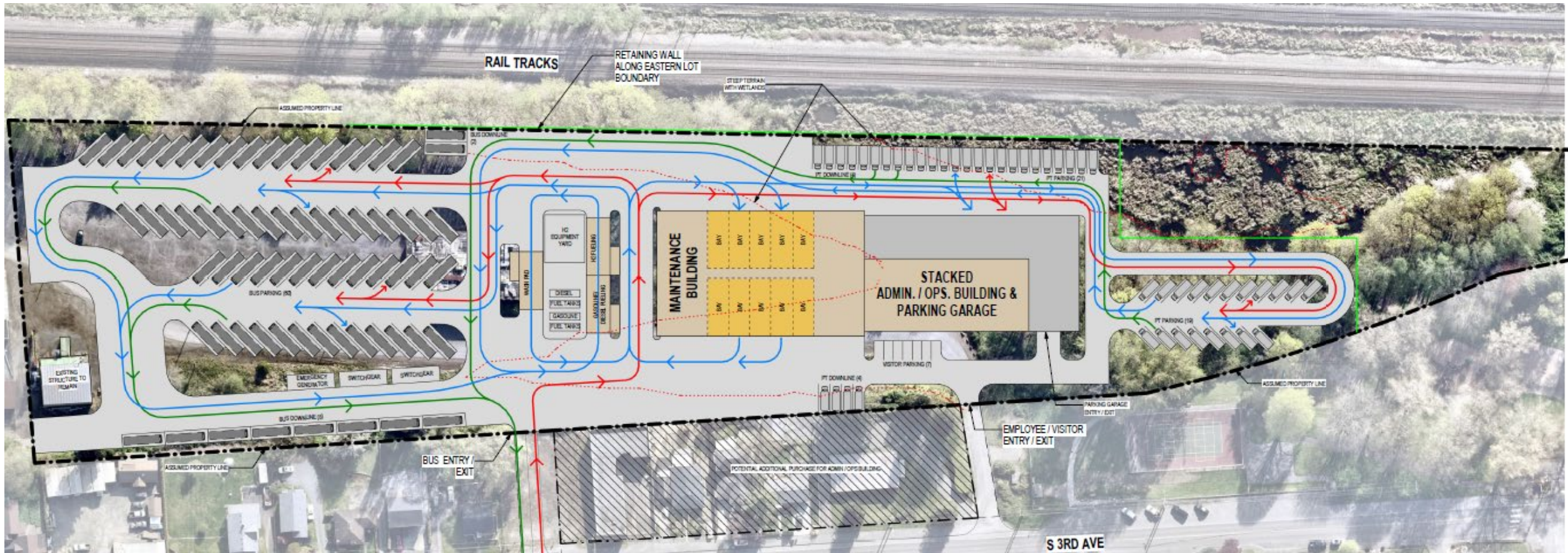
EPIC Site Concept Plan



South 3rd Ave. Site Concept Plan



South 3rd Ave. Site Concept Plan



Public Outreach

- Online Open House: April 17 – May 17
EverettTransit.org/MOAB
- Open House: Everett Station
April 29 & 30, 5 – 7 p.m.
- Presentations:
 - Transportation Advisory Committee: April 16
 - Council of Neighborhoods: April 27
 - ~~Everett City Council: April 29 (cancelled)~~

Notice of Site Consideration

Everett Transit is looking for a new location for our maintenance, operations, and administration facility. We are studying three potential sites, including expanding our current location at 3225 Cedar Street.

A Current facility
At 3225 Cedar Street

B Everett Point Industrial Center (EPIC)
At about 4001 Railway Avenue

C Industrial property
At 4225 South 3rd Avenue

Why is this needed?

Everett Transit's space is constrained, with the agency sharing space with other City departments. This space may not be available in the future, and Everett Transit needs an adequate facility to accommodate our current operations and a growing fleet.

Everett Transit is a municipally owned and operated public transportation agency, and functions as a non-general fund department of the City of Everett. It provides fixed-route and paratransit services seven days a week, including most holidays. It also owns and operates the Everett Station, the largest multi-modal facility in Snohomish County.

Next Steps

- Solicit and incorporate public input
- Finalize comparative analysis
- Select a preferred location and concept plan
- Prepare a Site Selection and Feasibility Study document

Contact

Mike Schmieder, Everett Transit Director
mschmieder@everettwa.gov

Sabina Araya, Assistant Transit Director
saraya@everettwa.gov

