

The Amatasi Project

A project linking remote communities in the South Pacific with international community groups through the construction and donation of an ecologically and economically sustainable transport and fishing vessel.



SEA MERCY

Where it all started



Sailing Catamarans in the South Pacific pre-date nearly all other civilizations by millennia. Their migratory voyages are legendary. Sail boat design and maritime tradition forms the basis of our modern world, pre-dating the coal-based economy and overland transport.

Additionally, sail powered vessels and the fishing tradition link the modern worlds of Europe and America with traditional cultures such as Australia's first people and Pacific Island cultures. These links seep down through generations.

The project

Linking communities around the world to the remote South Pacific Islands



Sea Mercy's Amatasi project links benevolent international community groups with remote communities in Tonga, Vanuatu, Fiji and other Pacific island nations. Community groups such as schools, local charities, organizations and private boat builders to undertake pre-construction (kit preparations) of a simple-to-build catamaran, the Amatasi 27, designed by award winning catamaran designer James Wharram.

Background

Fuel needs for island-based nations have been quoted at up to 18% of GDP and this is unsustainable.

These island nations were the first to sign up to the Paris Agreement to limit global warming and we need to support them wherever we can.

The staple form of transport throughout the island communities of the South Pacific is the longboat with a big outboard. They are used for general cargo, fishing, school bus, etc. Whilst great multi-use vessels, they are very expensive to run and fuel is often difficult to obtain.

We don't aim to replace the workhorse of the South Pacific, just add an economic alternative. There is currently a big movement towards wind-powered transport and we believe the Amatasi project will play a crucial role.



There is currently a big movement towards wind-powered transportation. Amatasi 27, designed by James Wharram.

Sea Mercy's mission

- * To empower local communities to be self-sufficient in a sustainable manner**
- * To educate local populations in the lost art of transport using the wind**
- * The Amatasi project brings together these aims**

Philosophy

Assisting remote communities

Economic sustainability

Reduce dependence on fossil fuels

Increase profit from fishing

Free up village funds for other needs

Encourage return to traditional practices

Empower these communities culturally

Provide training for sailing and boat maintenance

Benefits



International participants benefit as much as the island nation community partners. To build a boat requires planning, cooperation, and a practical skill set.

Young people will benefit from learning new skills and the satisfaction of creating a beautiful and practical gift that will make tremendous difference to the lives of the people who receive it.

Tapping into the traditional skills of carpentry and maritime practices connect young construction partners with their history and that of others, encouraging compassion and a sense of the wider world. It also becomes a study in traditional practices of non-western cultures in the Pacific region.

Benefits

International Sponsors & Construction Partners

- Learning
- Project skills: planning and execution
- Practical skills: plan-reading, carpentry, boating basics
- Emotional skills: compassion, generosity, charity
- The rich reward of helping to build something with one's hands while teaching others
- An introduction to the boating tradition and sailing basics
- An understanding of South Pacific island living
- A connection with people living a different life to ours
- An understanding of alternatives to fossil fuel

Media Opportunities

- Naming of the boat
- Launching and local sea trials in the village
- Possibility of educational trip to see the boat in use
- Good potential coverage with national TV and press

Island Nation Partner Communities

- A durable and versatile multi-use vessel
- Sustainable and affordable transport
- Making use of the constant trade winds
- Easily maintained
- Educational for all ages



The designer



Renowned catamaran designer James Wharram has sailed the world and studied traditional boats of the South Pacific.

Wharram catamarans are based on the best of low-tech traditional catamaran design but incorporate modern features such as fiberglass coating for durability and modern sailing rigs for ease of management.

Wharram catamarans can be found in ports all over the world and sailing oceans and seas everywhere. His design philosophy has stood the test of the harshest judges; the oceans and elements.

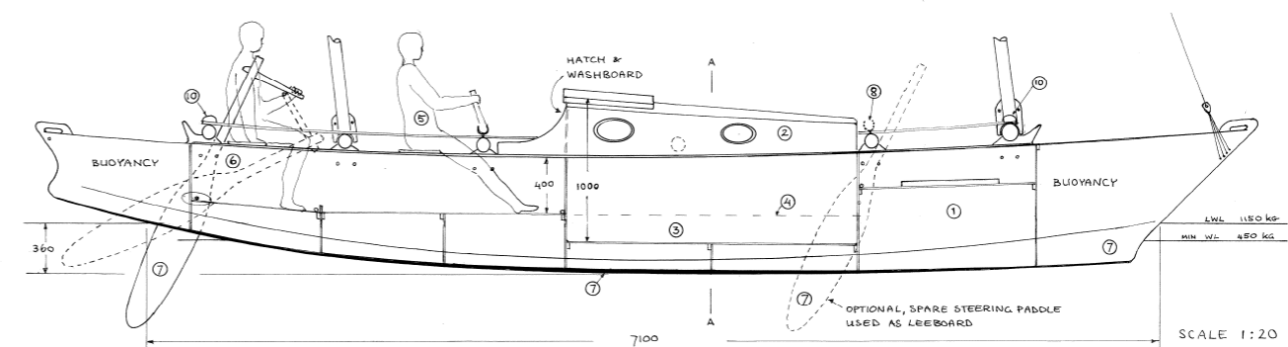
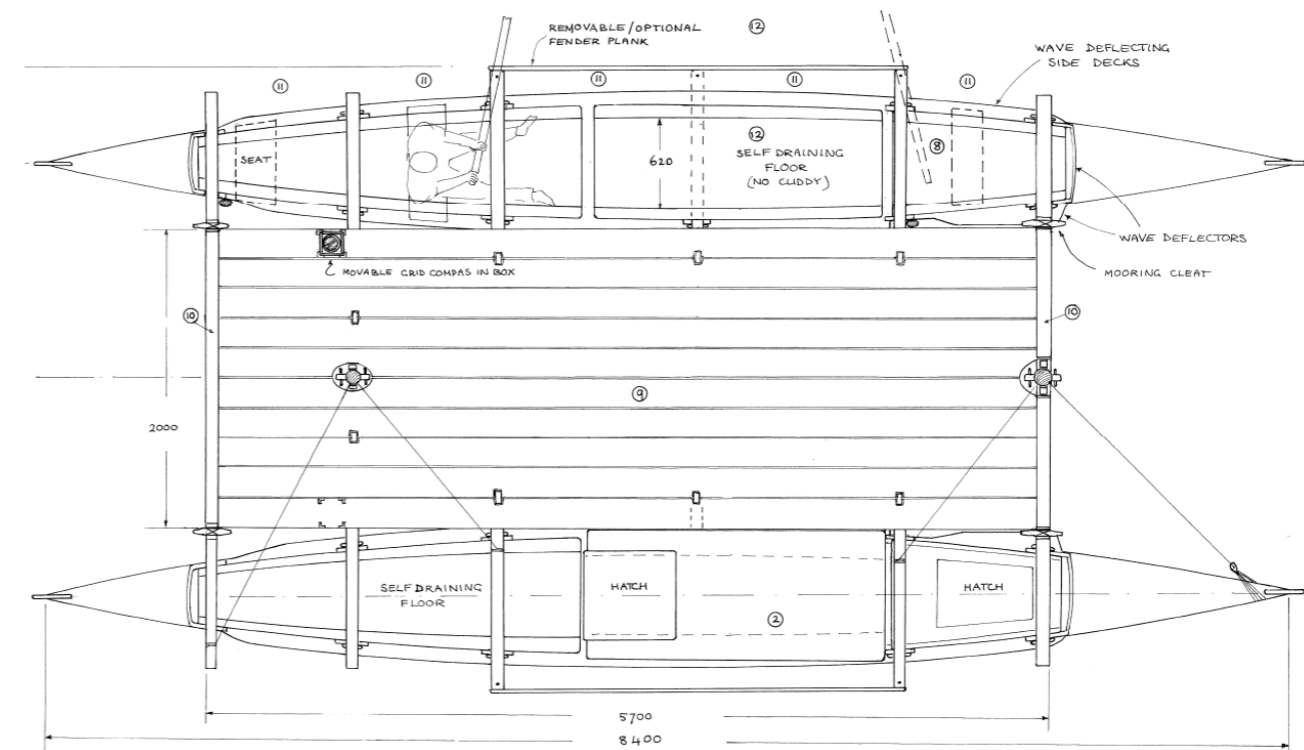
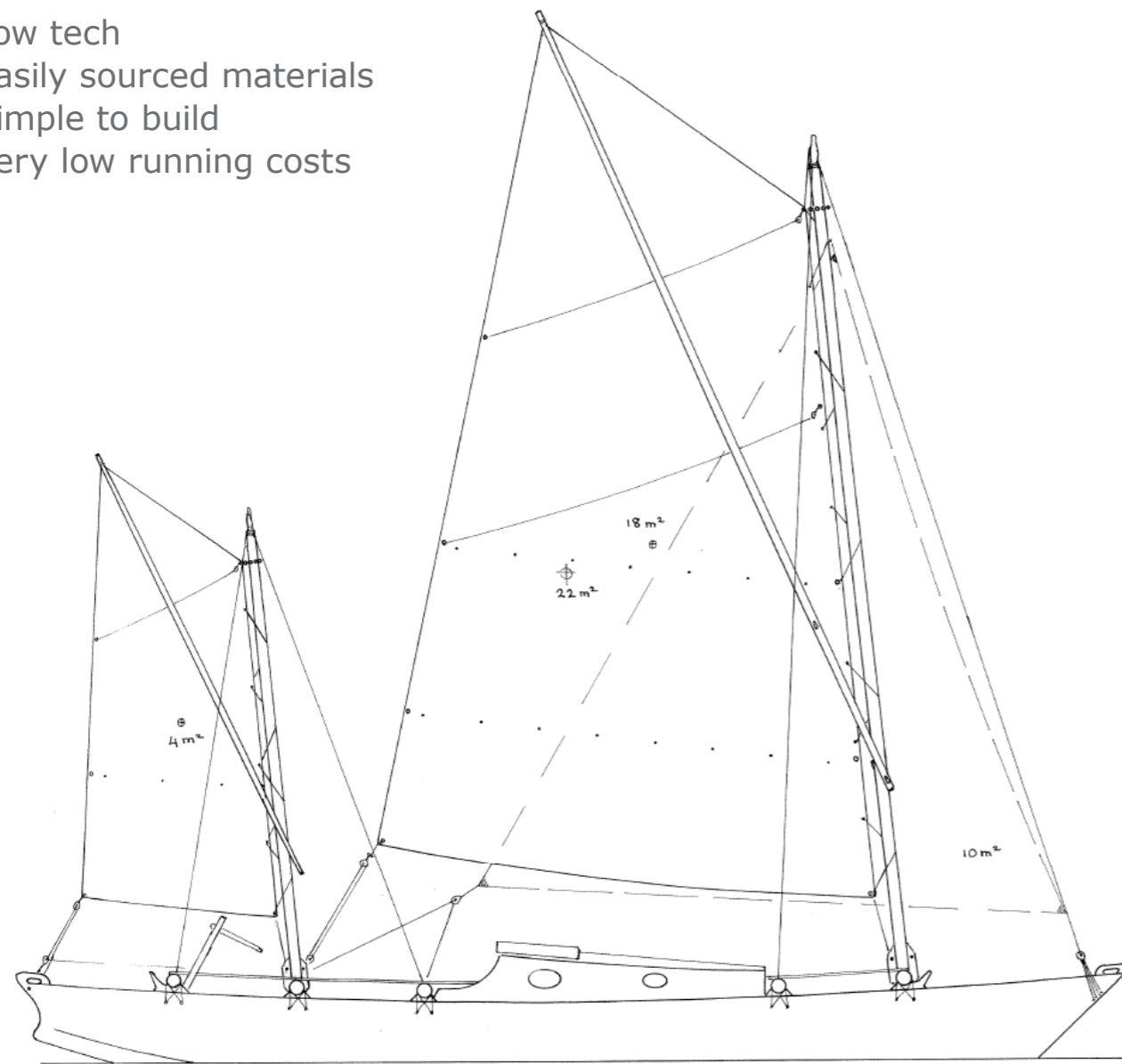
The Amatasi 27' was Wharram's winning entry in *Traditional Boat's* competition for an eco fishing boat. A double canoe design with bridge deck, it is low cost and requires few man-hours to build.

It can be built from affordable and readily available materials. It requires only moderate carpentry skills and can be done with two teams building each hull simultaneously. This design, mimicking as it does the traditional boats of South Pacific, is perfect to present to our island nation partner communities. There is latent hereditary knowledge waiting to be revived.

The traditional fishing catamaran

The Amatasi 27

- Low tech
- Easily sourced materials
- Simple to build
- Very low running costs



Project partners

Funding Partners

(Schools, Organizations, Individuals)

- Fund raise for a Amatasi vessel project(s)
- Help source local materials & relationships

Optional:

- Help to train the island nation captain to build & sail upon completion

Kit Construction Partners

(Sail makers, boat builders, shipping companies, schools, individuals)

- Hull patterns, bulkheads, masts, sails, decking
- Sails for vessel kits
- Assist in packaging and shipment of kit to island nation
- Amatasi build & training center (island nation)
- Labour and skills for construction of kit boat

Budget and Resources

Cost: circa \$14,000=\$16,000US

- Workshop space ideally <100m2
- Materials (as per plan)
- Approximate man hours: 650
- Skilled labour required: Minimal
- Basic woodworking hand and power tools
- Basic fiberglass skills
- Relevant safety equipment

Sea Mercy

An established charity operating in the South Pacific since 2012 with a proven track record of delivering humanitarian, medical and educational assistance via dedicated and volunteer yachts. As the coordinating charity partner, Sea Mercy will provide the following services:

- Select and screen island nation communities receiving vessels
- Access to discounted construction plans, materials and suppliers
- Help in organizing shipping of kits and final vessel to communities
- Support Kit construction and funding partners, including media opportunities
- Transportation, 30-day room & board of selected community trainees to the build partner kit construction site
- Assist in how-to-sail training of community trainees
- Vessel escort of trainee sailed Amatasi vessel to end community
- Assist in ongoing training and repair of Amatasi vessels
- Regular reporting back to the donors how the boat is being used and the difference it is making.

Our Island Nation Build Partner

The propose of our island nation build partners is to work together to champion the dream of bringing back sail powered transport to the island nations, one community and vessel at a time. Their goal is to engage, teach and train local community members in this lost art. Some of the services they support or provide are:

- Assist in remote community and trainee selection
- Coordinate build schedule and assembly
- Maintain needed supplies and tools for effective construction of vessels
- Direct training of local community member during kit construction
- Oversee how-to-sail training (in local languages) of local trainees
- Provide ongoing maintenance and re-training for Amatasi communities



SEA MERCY

Project Contacts

If you would like to discuss the project further, please contact
Richard Hackett of Sea Mercy +1 541-935-5846 (0)
rich@seamercy.org www.seamercy.org