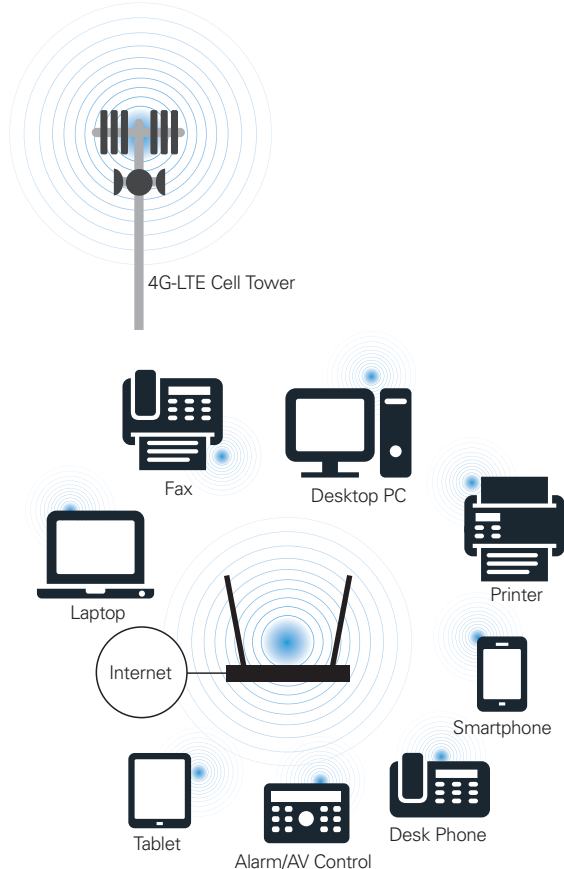


### 3G/4G-LTE 802.11n Wi-Fi Router, Dual VoIP Ports with Dual ATA's, Automatic WAN Redundancy, Remote Management (TR-069), Exceptional Performance

ReadyNet LTE520S 4G-LTE Wireless N Router is a combined wired/wireless network connection device designed to be the primary Internet access for various applications, such as small business/home offices, kiosks, SDWAN gateways, IoT devices, fax connectivity, and alarm systems – anywhere Internet access is needed.



### FEATURES

- Integrated 3G/4G modem
- LTE-FDD Bands B2/B4/B5/B12/B13/B14/B25/B26/B66/B71: LTE-TDD: B41
- Hardware NAT, DHCP, security and layer 2 and 3 QoS
- 2X2 2.4GHz 802.11 b/g/n (300 Mbps)
- Supports VoIP FXS ports with SIP and T.38 FAX
- External antenna for LTE, internal antenna for Wi-Fi
- 1 10/100M auto-negotiation RJ45 WAN port, 4 10/100M auto-negotiation RJ45 LAN ports
- Automatic dialing, on-demand dialing, and fixed time dialing
- Built-in firewall features, IP, MAC, URL filtering which flexibly controls online access and time
- 3-way conference, call hold/forwarding/transfer/waiting
- Option 66, TFTP, HTTP, HTTPS and TR-069 for provisioning

### GENERAL SPECIFICATIONS

#### VoIP SoC

MIPS Single-core 600MHz

#### Flash

16M Flash

#### RAM

64M DDR2 RAM

#### Power Supply

AC/DC Adapter

AC Input: 100~240V, 50~60Hz

DC Output: 12V, 1A

#### I/O Interfaces

1 RJ-45 WAN port (Ethernet 100 Base-T)

4 RJ-45 LAN ports (Ethernet 100 Base-T)

2 RJ-11 FXS ports

4G LTE SIM Card

#### Environmental

Operating Temperature: -5°~45° C

Storage Temperature: -25°~ 85° C

Relative Humidity: 10%~90% Non-condensing

#### Key Feature

LTE-FDD Bands B2/B4/B5/B12/B13/B14/  
B25/B26/B66/B71: LTE-TDD: B41

Hardware NAT (HNAT) Engine with  
100Mbps NAT/NAPT Speed

2X2 2.4G 802.11 b/g/n (300 Mbps)

Supports VoIP FXS Port with SIP and  
T.38 FAX

External Antenna for LTE and Wi-Fi

#### Audio Codec

G.711 (A-Law, u-Law) with PESQ above 4.3

G.729 with PESQ above 3.7

Adaptive Jitter Buffer Management

Voice Activity Detection

Comfort Noise Generation

Echo Cancellation

T.30 FAX with G.711

Real Time FAX over IP via T.38

#### Protocols

SIP V2.0 (RFC 3261, 3262, 3263, 3264)

Backward Compatible with RFC2543

Session Timer (RFC4028)

SDP (RFC2327)

RTP/RTCP (RFC823/903)

NAPTR for SIP URI lookup (RFC2915)

STUN (RFC2030)

ARP/RARP (RFC 826/903)

SNTP (RFC 2030)

DHCP/PPPoE

HTTP Server for Web Management

TFTP/HTTP for Auto Provisioning

Message Waiting Indicator (RFC3842)

DHCP Option Codes for SIP (RFC3361)

DNS/DNS SRV (RFC1706 and RFC 2782)

IEEE802.1Q VLAN/802.1p and IP DSCP

#### Wireless

802.11 b/g/n support

4 SSID

Static WEP (64/128bit)

Dynamic WEP (64/128bit)

AES (CCMP/TKIP)

MAC Certification

WEP Certification

WPA-PAK/WPA-PSK(2.0)

WPA/WPA2

AP Isolation and MBSSID AP Isolation

WMM

WDS

WPS

Station List

RADIUS Certification and Billing

MAC Filter (different from wired MAC Filter)

#### Applications

LTE

NAT Mode and Bridge Mode

DDNS

MAC Address Cloning

SIP Proxy Redundancy

NAT Traversal by STUN

Built-in Wired Speed NAT Router

DHCP Server and Client

IP Conflict Detection

Port Forwarding, DMZ, SuperDMZ

802.1Q VLAN/802.1p, DSCP, Rate Limiting

VPN (PPTP,L2TP, IPSec) Passthrough

SNTP

IGMPv2

Firewall (SYN Flooding, IP Spoofing, Smurf  
Attack, Ping of Death, DoS)

#### Management

Firmware Upgrade

Web Management Interface

IVR-driven Management Interface

Local and Remote Syslog (RFC3164)

Auto-provisioning

SNTP Time Synchronization

Multi-user Level

SNMP v2

Telnet

TR-069

System Log: Local Log and Remote Log

#### Call Features

3-way Conference

Call Hold

Call Forwarding

Call Transfer

Call Waiting

Caller ID and CWCID

DTMF Relay: Inband, Outband and SIP Info

QoS Layer 3

Call Log

CID/CWCID

Dial Plan

DTMF Mode: Inband, Outband and SIP Info

#### Regulatory

FCC Part 15 Class B

RoHS

PTCRB

#### Carrier Certifications

Verizon, AT&T and T-Mobile.

Rogers coming soon.

#### Dimensions

(L) 188 x (W) 155 x (H) 29mm

Weight - 331g (without package)

#### Warranty

1 Year Limited Product Warranty