



Cheshire Contractors Pty Ltd

A.B.N. 75 124 700 385

Company Profile – Capability Statement



COMPANY PROFILE & CAPABILITY STATEMENT

Cheshire Contractors
Pty Ltd



ESTABLISHED 1979

RELIABILITY. EXPERIENCE. EXPERTISE

ABSTRACT

Cheshire Contractors Pty Ltd. is proud to say we are Far North Qld owned and operated and specialise in civil construction, earthmoving and heavy machinery plant hire. We're highly skilled in many areas, mainly in earthworks, roadworks, sub-divisional work, civil infrastructure, aquaculture and turf-based construction. We've completed a vast number of projects across Queensland, Cape York Peninsula and the Torres Strait Islands, supporting the local community wherever we can for the duration of the project. These projects and many more, have earned Cheshire Contractors an enviable reputation for providing quality work on every project.





Company Profile – Capability Statement

Table of Contents

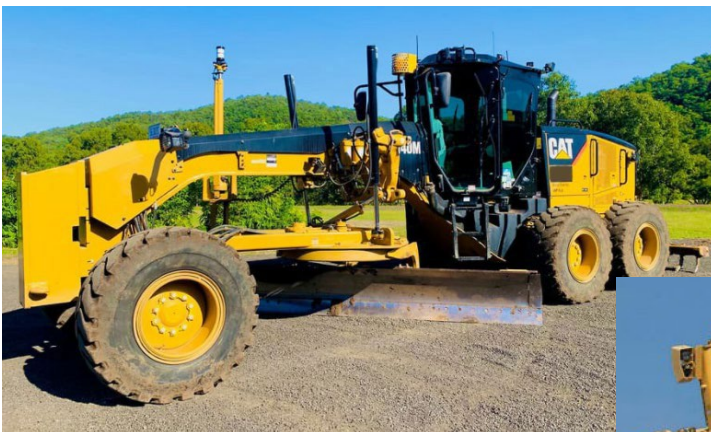
1. Executive Summary	3
2. Key Personnel	5
2.1 Cheshire Contractors Organisational Chart.....	9
3. Employment and training of Indigenous people.....	10
4. Core Capabilities	12
5. Equipment and Resources	14
5.1 Equipment and Resources contd.	15
6. Drone Captured Data	17
6.1 Visualized, 3D drone-captured site data,.....	17
7. Our Dedication to Health & Safety	20
8. Our Dedication to protecting the Environment.....	20
8.1 Cheshire Contractors Key Environmental Objectives:	20
9. Our Dedication to Quality Assurance:.....	21
10. Projects – refer to www.cheshirecontractors.com.au/projects	21
DRFA Road Restoration Works	21
Construction of Hardstand at the New Southern Barge Ramp.....	23
Blackman Road Causeway Upgrades – Warrami	23
Mountain View Estate Stage 3 – Innisfail.....	24
Industrial Subdivision – Wangan	24
E2G – Cairns Southern Access Corridor Edmonton to Gordonvale Bruce Highway	24
Brodie Street, Hughenden - Revitalisation Roadworks	25
10.8 Hughenden - Recreational Lake and Surrounds Precinct Project	26
11. How to get in Touch with Us.....	27

Company Profile – Capability Statement

1. Executive Summary

Cheshire Contractors Pty Ltd is a locally owned and operated civil construction; earthmoving and heavy machinery hire company that has been in operation since 1979. Over this time, we have undertaken and completed a vast number of projects across the entire state of Queensland, Cape York Peninsula and the Torres Strait Islands for an array of clients including private developers, property developers, Local & State Government, Aquaculture industry and Thoroughbred Racing industry. These projects and many more have earned Cheshire Contractors an enviable reputation of providing quality work, every project. Our company is highly skilled in all of the following types of work:

- Road works
- Bulk Earthworks
- Minor Excavation and Non-Building Civil Engineering Construction
- Sewer and Wastewater Reticulation and Renewals
- Water Mains, Reticulation and Renewals
- Storm water Drainage
- Excavation for Electrical & Telecommunications
- Erosion & Sediment control works
- Aquaculture works
- Agricultural drainage systems
- Turf based construction (Bulk and Fine)
- Water Storage Facility Construction





Company Profile – Capability Statement



Company Name:	Cheshire Contractors Pty Ltd
Australian Company Number:	124 700 385
Australian Business Number:	75 124 700 385
Office Address:	<u>Cairns:</u> 546-550 Bruce Highway, Woree QLD 4868 <u>Hughenden:</u> 9 Lammermoor Street, Hughenden QLD 4821 <u>Tully:</u> Lot 1 Fox Road, Birkalla QLD 4854
Postal Address:	P.O. Box 142, Bungalow, QLD 4870
Telephone:	(07) 4052 2700
Email:	admin@cheshirecontractors.com.au
Web Site:	www.cheshirecontractors.com.au
Public Liability Insurance:	ATC Public & Products Liability
Amount of Cover:	Public Liability \$20,000,000-00 Products Liability \$20,000,000-00
Workers' Compensation:	WPA080793618

Company Profile – Capability Statement

2. Key Personnel



John Della Ricca – Managing Director

Career Profile

John began his career as an apprentice Diesel and Heavy Earthmoving Equipment Fitter with Hastings Deering in 1981. Throughout his apprenticeship John regularly exceeded his superior's expectations and spent the 3rd and 4th years of his training completing field service. He received his trade qualification with honours in 1985 and immediately obtained work in Papua New Guinea with Hastings Deering Pacific where he spent two years as the Maintenance Foreman to a crew of 10 fitters

responsible for an extensive range of mining machinery. In 1988 John returned to Australia and started his own successful contracting business that ran for the 13 years. During this time, John built and fostered strong, reliable working relationships with many civil and mining contractors and heavy machinery hire companies through quality and timely service. It was then, in 2001, the opportunity arose to purchase a 50% share in one of the very companies he was servicing, Cheshire Contractors. In 2023 John became the soul Director of Cheshire Contractors.

Today, John is the successful partner, director and manager for several businesses, including:

- Cheshire Contractors (Plant Hire)
- Cheshire Contractors Pty Ltd (Civil Construction/Earthmoving)
- Cheshire Fox Della Ricca and Court (Industrial Developments)



Company Profile – Capability Statement

Shannon Cheshire – Operations/Contracts Manager

Career Profile



Shannon has over 22 years' experience within the civil construction industry and has been awarded the role of Operations/Contracts Manager at Cheshire Contractors.

Shannon has progressively worked his way through several roles including labourer, pipe layer, concreter, multiple machine operator, leading hand and Foreman. Shannon holds a Diploma of Civil Construction Management and Diploma of Project Management was the Civil Contractors Federations' apprentice of the year in 2007. Shannon's extensive experience has enabled him to work successfully with clients as well as workers to get the job done on time and within budget.

Relevant Project Experience

Listed below are a number of similar recent projects that Shannon has been involved with directly as Foreman:

- PDR – Archer River to Merluna Station Mein Deviation Upgrade
- McDonnell Creek Centreline Widening Upgrade
- Murray Falls Bridge Crossing
- Mountain View Residential Subdivision Stage 10a
- Gordonvale Service Station Intersection Upgrade
- NDRRA Works
- Riverview Estate Stage 1 & 2
- Aurukun Residential Subdivision Stage 1 – Department of Housing and Public Works
- Aurukun Residential Subdivision Stage 2 – Department of Housing and Public Works
- Oasis Mission Beach Subdivision – Baracon
- Seaview Estate Mission Beach Subdivision – Les Blennerhassett

Qualifications

- Diploma of Project Management (BSB50820) – Orbus3 Pty Ltd
- Diploma of Civil Construction Management (RII50415) - Orbus3 Pty Ltd
- Certificate IV in Work Health and Safety (BSB41419) – Civil Safety
- Certificate IV in Civil Supervision (RII40712) – Training & Assessment Mentor (TAM)
- Certificate III in Civil Construction Plant Operations (RII30815) – Civil Train QLD
- Manage Project Integration (BSBPMG540) – Orbus3 Pty Ltd
- Apply Risk Management Processes (RIIRIS301E) - Orbus3 Pty Ltd
- Statement of Attainment Explosives
- Civil Contractors Federation 2007 Apprentice of the Year Award

Company Profile – Capability Statement



Steve Camp – Project Manager/Engineer

Career Profile

Steve is a qualified Civil Engineer with over 29 years of experience. Steve finished his Bachelor of Engineering (Civil) with Honours in 1994 and entered the consulting industry undertaking various positions. Steve has covered many fields of engineering including civil, structural and geotechnical, which has gained him extensive experience

in the planning, design, and construction of projects. In particular Steve's strength lie in all aspects of Subdivision works, drainage infrastructure, road works and bulk earthworks. Steve's experience and knowledge enable him to manage projects involving difficult and challenging work environments and conditions.

With Steve's consulting background and broad range of knowledge he brings an extraordinary level of quality and understanding to all aspects of his work. Steve oversees the total management of all our projects and through professional communication ensures effective delivery is achieved.

Qualifications

- Bachelor of Engineering (Civil) IIA Honours, James Cook University (Townsville) 1994
- RPEQ - Registration as a Professional Engineer of Queensland 2001



Craig Coyne – Surveyor / Draftsman / Project Supervisor

Career Profile

Craig began his tenure with Cheshire Contractors in 2004 as a surveyor/draftsman. Throughout the past 15 years, Craig has been and is responsible for project survey operations, preparing and creating As-constructed drawings and preparing and implementing Traffic Management and Erosion Sediment Control plans. Craig also holds RII30815 Certificate III in Civil Construction Plant Operations

Craig also plays a key role with project designs. He has a keen eye for detail and is well versed in design software programs such as Auto-Cad as well as in the use of ATS, SPS and GPS surveying equipment. Within the past 5 years Craig has supervised a number of projects for Cheshire Contractors, working closely with our Engineers and operators.

Craig also holds RPA operator accreditation, this accreditation authorises the holder to operate excluded RPA, micro RPA and model aircraft. Issued in accordance with regulation 101.374E of the Civil Aviation Safety Regulations 1998. With this accreditation Craig is fully qualified with all aspects of propeller drone technology which gives highly accurate topographical data which can be collected more frequently, and at a lower price point. Furthermore, with more survey data means that Cheshire Contractors can execute designs with greater precision, track our progress (and the progress of subcontractors), Catch errors and maintain a record of our work for real life progress.

Relevant Project Experience

Listed below are a number of similar projects that Craig has been involved with directly as the Surveyor/Draftsman:

- Hughenden - Recreational Lake and Surrounds Precinct Project - Flinders Shire Council
- Cardwell - Intake Sediment Ponds Upgrade - Seafarms Pty Ltd
- Mission Beach - Blenners Subdivision Phase 1- Les Blennerhassett
- Cassowary Coast – Cassowary Coast Road upgrade Packages 2,3,4,6,7 – Cassowary Coast Regional Council

Company Profile – Capability Statement

Leslie Smith – Safety/HR Manager

Career Profile

Les Smith is a fully qualified and highly skilled Manager / HSEQ professional with proven experience on a range of high-level construction and Civil Operations throughout his career to date.

With over 23 years of HSEQ roles and management experience, Holistically, Les having pertinent experience in managing teams, developing systems, procedures, excellent communication skills and computer skills, Les has received recognition for Health and Safety Management Systems and initiatives implemented under his supervision and during this time have had significant experience in auditing to Australian and International standards.

Les also has a full understanding of the DTMR Key Result Areas (KRA's) set out by relevant Departments to maximise local employment, training and business supply opportunities for Aboriginal and Torres Strait Islander. Furthermore, an over-all understanding and interpretation of all requirements of DTMR i.e. The Transport and Main Roads Specifications, Technical Specification (MRTS) and/or a Specification (Measurement) (MRS), with Annexures as required

Les spent approx. 6 years in Cape York, residing in Weipa and firstly appointed Senior HSEQ Advisor – Systems and Compliance with North Queensland Civil Engineering and Contracting (NQCEC) Les was instrumental in NQCEC gaining their Federal Safety Accreditation through The Office of the Federal Safety Commissioner (OFSC) and completely overhauling their system to meet the new requirements of ISO14001-2015 & ISO9001-2015

Les has been involved with numerous projects while working with Cheshire Contractors, an example can be found below:

- Contract number 102.2021.1 - Brodie Street (Hughenden) Revitalisation – Roadworks, construction works consist of the construction of new barrier kerb and channel, pavement, median kerbs, median infill, line marking, grated kerb cross over, pedestrian barriers, drainage structures and all other items located within the new barrier kerbs as detailed on the drawings - Flinders Shire Council

Qualifications

- Diploma of Occupational Health & Safety (BSB51307), National Safety Council of Australia
- Diploma of Management (BSB51107), TAFE, QLD
- Diploma of Project Management (BSB50820), Orbus3 Pty Ltd
- Diploma of Civil Construction Management (RII50415), Orbus3 Pty Ltd
- Certificate IV – Environmental Management, Absorb Training
- Integrated HSE Lead Auditor – ISO 14001:2015, ASNZ 4801 (31000), The Systems 3 Group (RABQSA)
- Certificate IV – Front Line Management, TAFE, QLD
- Certificate IV – Training and Assessment (TAA), Counselling & Community Studies Institute
- Certificate IV – Emergency Medical Technician, First Response Australia
- Rehabilitation & return to Work Coordinator, Department of Commerce
- Certificate III – Mines Emergency Response and Rescue, Mines Rescue Australia

Company Profile – Capability Statement

Carla Cheshire – Accounts Manager



Career Profile

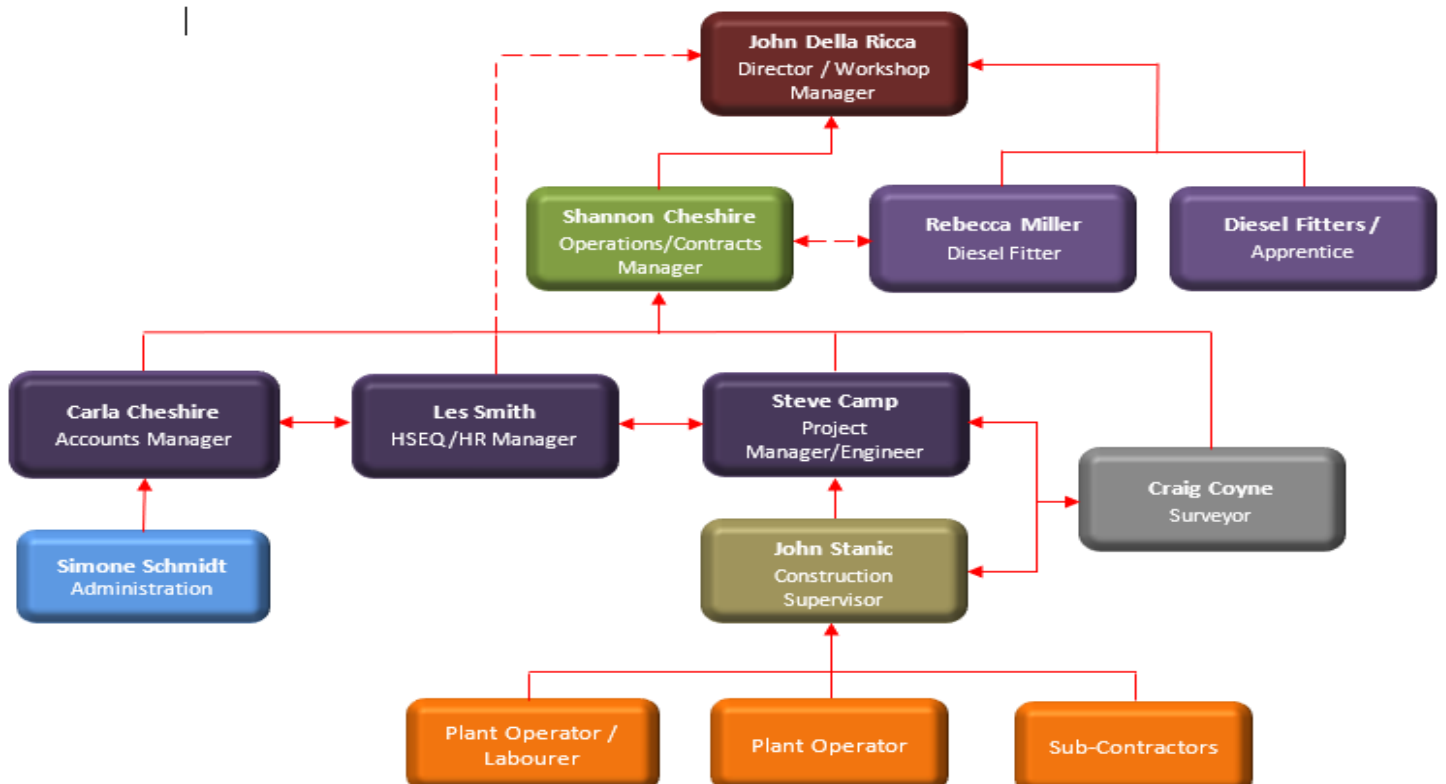
Carla is an experienced and qualified finance Manager with prior experience in similar roles in which Carla managed the entire accounting function of the business. Carla has a strong technical accounting skill, advanced proficiency in excel and experience using large ERP systems. Additionally, Carla possesses the ability to effectively communicate analysis of key financials to the senior management, furthermore Carla is responsible for:

- Undertake analysis of budget performance and the ongoing monitoring, reviewing, and reporting of budget activities.
- Weekly and monthly cash flow forecasts and working capital management.
- BAS
- Accounts Payable and Accounts Receivable
- Ad hoc reporting
- Reconciliations of general ledger accounts
- Management of company payroll including staff superannuation and preparing legislative and statutory returns, including income tax, payroll tax and BAS returns.
- Work closely with external accountants to ensure that year-end financials and tax returns are all completed and lodged.

Qualifications

- Bachelor of Business (Majoring in accounting), James Cook University

2.1 Cheshire Contractors Organisational Chart



Company Profile – Capability Statement

3. Employment and training of Indigenous people

Cheshire Contractors Local and Indigenous Employment and Opportunities Plan outlines the specific commitments Cheshire Contractors will make in the areas of Indigenous employment, cultural recognition and capability, financial capability as well as capacity building in areas that are directly related to our business, our staff and the communities in which we operate. By delivering on these commitments, our aim is to contribute to increased financial and social well-being for Aboriginal and Torres Strait Islander peoples, and to create broader regional benefit in Cape York and the North West through maximising local participation. This plan includes contracted deliverables through the federal Department of Prime Minister and Cabinet to provide work experience placements for a minimum of Indigenous CDP participants) sourced from the communities of Aurukun, Cherbourg, Coen, Doomadgee, Hope Vale, Kowanyama, Lockhart River, Mapoon, Mornington Island, Mossman Gorge, Napranum, Northern Peninsula Area (includes Bamaga, Injinoo, New Mapoon, Seisia and Umagico), Palm Island, Pormpuraaw, Woorabinda, Wujal Wujal and Yarrabah.

Our focus is on capacity building designed to unlock the potential of Cheshire Contractors staff, including Indigenous people and increase opportunities to build self-esteem and to encourage self-development. We recognise that meaningful employment leads not only to improved opportunities for the individual, family and communities, but also enhances Indigenous culture, heritage values and beliefs, consequently Cheshire Contractors has a related training entity, Civil Safety FNQ operating out of Cairns and Weipa, that is able to provide quality accredited training in civil construction and mining services which will be of significant benefit to Indigenous and non-Indigenous trainees and operators from the North West & Cape York region.



Company Profile – Capability Statement

4. Core Capabilities



Civil Construction and Design

- In-house engineering design capabilities to deliver complete and economical design solutions
- Feasibility Costing
- Constructability assessments with a particular strength in erosion control and dealing with high rainfalls and water flows

Infrastructure and Utilities Earthworks including:

- Bridges
- Culverts (concrete/steel) and civil works near waterways
- Dams and Ponds
- Water reticulation, water mains and water treatment facilities
- Sewer reticulation, sewer rising mains, and sewer pump stations
- Civil infrastructure – civil concrete construction (in-situ)
- Dewatering Operations
- Services Installation –

communications and data conduit installation and electrical conduit *installation*

Bulk and Detailed Earthworks including:

- Site clearing and site preparation on greenfield and brownfield sites. Cheshire Contractors have extensive experience in brownfield site construction and in working in hard to access, and environmentally sensitive areas
- Camp site earthworks including bulk and detailed earthworks for services installation (water, wastewater power, data and telecommunications)
- Building pads for mines and industrial facilities, gas processing plants and other facilities
- Earthworks for gas gathering infrastructure and pipelines
- Turf Based Constructions – golf courses, racecourses and sports fields

Road Construction including:

- Sealed roads – Local and Regional
- Unsealed roads and access ways
- Road Maintenance and rehabilitation works including flood repairs
- Sprayed bitumen emulsion sealing and pothole repairs (In-House capability with Autopatch Truck)
- Concrete road pavements and footpaths

Plant Hire

- Wet and Dry Hire arrangements

Company Profile – Capability Statement

Drainage & Erosion Control

Cheshire Contractors has developed a unique product that manages drainage and mitigates potential erosion impacts –

- Monks (precast concrete hydraulic level control structures) – Cheshire contractors designed product to control the hydraulic level and drainage of ponds on aquaculture farms. Some of these aquaculture farms were wholly designed by Cheshire Contractors.

Camp & Logistics Support

Cheshire Contractors specialises in project delivery in remote, environmentally sensitive and hard to access locations. In-House support includes:

- Self-contained camps for workers
- Plant & Equipment transport vehicles with road train configurations
- Sea transport and logistics management

**Cheshire
Contractors
operates
throughout
Queensland and
can operate in
other regions
upon request.**

Cheshire Contractors undertakes this work for industries including:

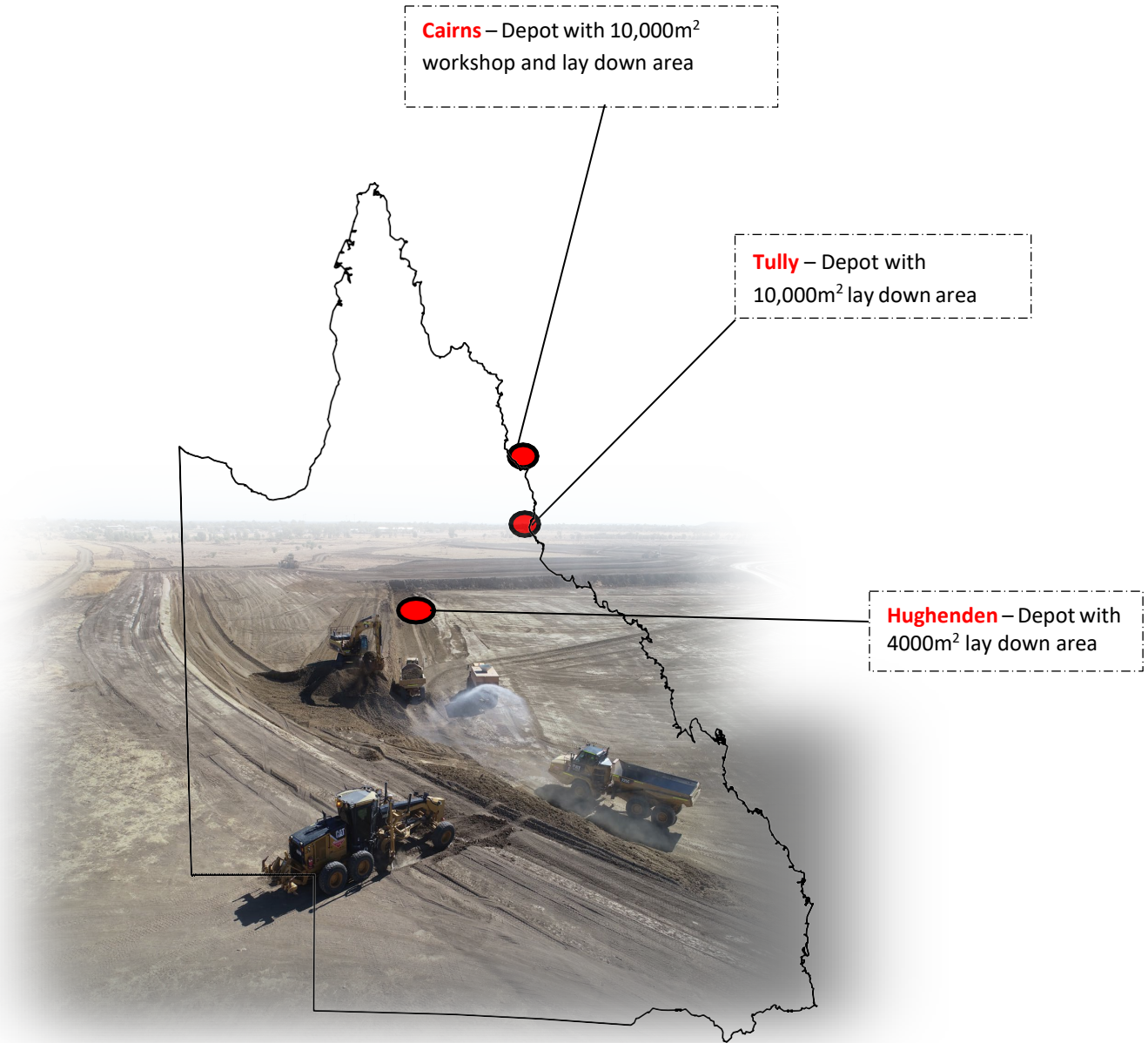
- Oil and Gas
- Council, Main roads
- Mining
- Rail
- Agriculture
- Aquaculture
- Residential, commercial and industrial subdivisions



Company Profile – Capability Statement

5. Equipment and Resources

Cheshire Contractors operates from 4 depots and workshops located in:



Company Profile – Capability Statement

5.1 Equipment and Resources contd.

Cheshire Contractors owns and operates all our own machinery. We take great pride in keeping our plant in good working order and conduct maintenance from routine to major rebuilds in-house at our industry leading workshop in Cairns. The workshop is managed by John Della Ricca who is the sole director of the business and employs 4 other diesel fitters. We also have 2 field mechanics that provide onsite repairs to reduce downtime. Our extensive range of machinery includes: -

- 5 Caterpillar 615C Scrapers
- 5 Caterpillar Graders (140H,16H,140M)
- 1 XCMG Excavator (5t)
- 1 Kobelco Excavator (8t)
- 4 Caterpillar Excavators (22t,24t,25t 49t)
- 2 Volvo Excavators (30t)
- 1 Volvo A25C Articulated Dump Truck
- 7 Caterpillar 725C Dump Trucks
- 6 Rollers (Smooth Drum, Padfoot, Multi)
- 2 Caterpillar 815B&F Compactor
- 1 Caterpillar D8T Dozer
- 1 CAT Front End Loader
- 3 Water trucks 13000KI
- 2 semi water trucks 32000KI
- 3 Backhoes
- 1 Quad Axle widening float with dolly.
- 1 Triaxle Widening Float
- 1 Step Deck Tri-Axle
- Prime Movers
- 4 Truck & Quad Dogs
- 7 Body Trucks
- 1 Mack Tandem Service Truck
- 1 PaveLine Autopatch Truck
- 38 Light Vehicles
- Many other sundry items of equipment necessary to get the job done



Company Profile – Capability Statement

Cheshire Contractors also operates its own low loader to enable machinery to be shifted as required. Our machinery is complemented by our fleet of 35 vehicles for servicing, supervisors, foreman and construction crews.

We are also equipped with the latest GPS 3D grade control systems, SPS Total Stations and Precision Lasers. The GPS 3D grade control system fitted to earthmoving machinery allows for greater accuracy in excavations and reduces the need to have grade checkers or survey stakes installed which increases productivity. This system is fitted to our Caterpillar 324D and Volvo 30t Excavators and our Caterpillar 140H,140M and 16H Graders. The SPS (Satellite Position System) Construction Total Stations is used for all our construction set-out and as constructed survey. All our earthmoving machinery can be fitted with laser levels to undertake bulk earthworks and trimming operations



Company Profile – Capability Statement

6. Drone Captured Data

Cheshire Contractors are one of the first Civil Construction Businesses in F.N.Q to use 3D Drone captured



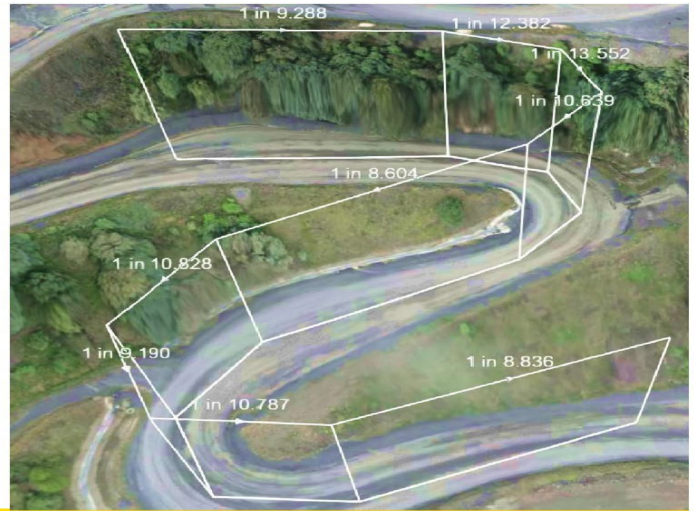
6.1 Visualized, 3D drone-captured site data,

Cheshire Contractors is reducing their boots-on-the-ground surveying costs, scaling up business, and solving contractor disputes with high data confidence when they arise. Changing the heavy civil and resource industries operate, Propeller is helping teams measure and manage their sites themselves. The cloud-based analytics platform known as Propeller visualizes drone survey data to allow teams to track their worksites' progress and productivity, and make data-driven decisions that reduce costs, ensure quality, and use resources efficiently.

Cheshire Contractors Pty. Ltd. now gets a better look into dirt movement on their sites and a better understanding of who is moving, what dirt, where, and when. Cheshire Contractors wanted a solution that would give them transparency into the status of their site and reduce time spent in the field surveying so they could focus on winning larger projects and scaling their business. And win larger projects they did. After winning the bid on a 160 hectare [395.369 acre] project, a site that would take close to 20 days to survey, Cheshire Contractors knew they had to find a complete solution that combined **drone photography** with survey-grade data. Cheshire Contractors chose Propeller because its easy-to-use platform made frequent drone survey capture reality. It would reduce the time the team spent in the field and produce 3D visualized drone survey data that we could take back to our client—a competitive advantage.

Road and asset management

- A **detailed aerial site map** helps you manage traffic flow and ensure optimal site access.
- Measure **road grades** and **windrow heights**.
- **Ensure haul roads are optimized** for productivity.



Ensure compliance

- Track **conformance to design** by measuring against previous surveys or imported surface designs.
- Ensure you're keeping within **site boundaries**.
- **Reduce reporting overheads** for regulatory compliance (environment, heritage, municipal governments, etc).



Internal communications

- Puts accurate, **up-to-date information** in the hands of site teams making important day-to-day decisions.
- **Frees up survey teams**, letting them focus on more complex, valuable work.
- Improve the clarity and speed of internal communication; **reduce the risk of misunderstandings** and costly mistakes.

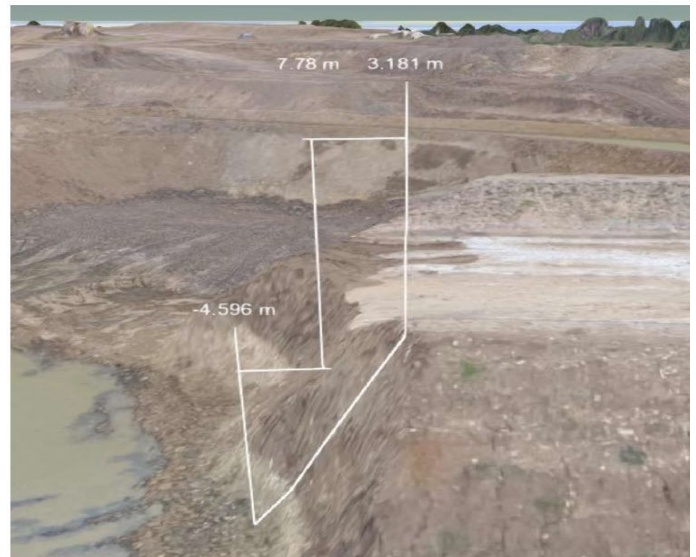




Cheshire Contractors – Hughenden Recreational

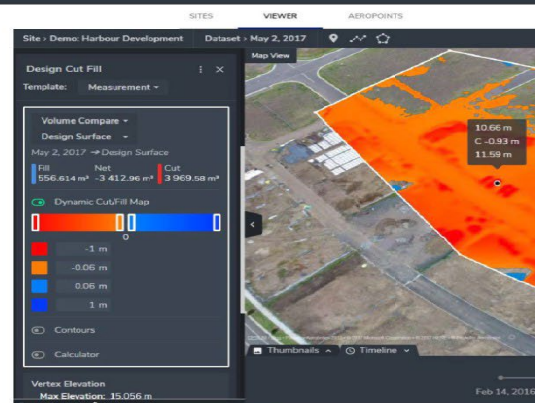
Safety benefits

- **Inspect hazardous areas** without putting personnel in danger; reduce exposure to harmful toxins.
- Monitor wall angles, and stockpile heights/angles to **identify potential slips** before they happen.
- Identify hard-to-see **hazards** that would be impossible to spot from ground-level.
- Check **bench heights, berms** and **windrows**, and have a record of compliance.



Propeller Provides Real World Solutions

- **Access from anywhere** you have internet connection.
- Supports every coordinate system + **local site calibrations**.
- Create and analyze accurate **3D terrain models** in browser.
- Track inventory on hand: Calculate current and changed **stockpile volumes**.
- **Visually compare** against previous surveys or imported surface designs.
- Measure **change over time** and produce cut/fill reports.
- Ensure haul roads are designed for productivity with **gradient and cross section** tools.
- Easily create and **distribute templates and reports**.



Company Profile – Capability Statement

7. Our Dedication to Health & Safety

Cheshire Contractors recognises that providing an efficient and productive work environment, health and safety in the workplace is essential and is our #1 priority. The company is dedicated to ensuring the health, safety and wellbeing of all our employees' sub-contractors, clients, suppliers, the members of the public and our aim is for a goal of zero incidents, accidents, injuries and environmental impacts.

Cheshire Contractors has an established Health, Safety and Environmental Management System, specifically designed to address our operations, with full management commitment to the ongoing continuous improvement of the Health, Safety and Environmental Management System, focusing on all safety issues that may affect our operations. We achieved this through effective consultation with employees and subcontractors monitoring procedures and standards, audits and inspections.

The Cheshire Contractors Health, Safety and Environmental Management System fully aligns with AS/NZS ISO 45001 :2018 & ISO 14001 :2015

Cheshire Contractors continually commits to promoting a strong safety culture to achieve our goal of zero incidents, accidents, injuries and zero environmental impacts; this is reflected in our excellent safety performance indicators.

8. Our Dedication to protecting the Environment

Cheshire Contractors recognises the importance of implementing measures to mitigate or eliminate impact to our environment. Environmental management planning is integrated into all our business activities. Cheshire Contractors has an established environmental management system fully aligns to ISO 14001 :2015.

All projects undertaken by Cheshire Contractors are specifically evaluated with a documented project specific Environmental Management Plan (EMP) established and maintained.

The Health, Safety and Environmental Management System has been developed to improve Cheshire Contractors' environmental performance and defines the framework for the effective management of the identified environmental aspects of our business activities.

8.1 Cheshire Contractors Key Environmental Objectives:

- Conduct our operations in accordance with the relevant environmental legislation, regulations, codes of practice and standards.
- Provision of an effective risk management process for the ongoing identification of environmental impacts in relation to our projects and business activities.
- Ensure environmental responsibilities are established for personnel.
- Set specific environmental objectives and targets in relation to our business activities and ensure they are monitored and maintained.
- Ensure staff are provided with adequate environmental education and training to continually improve awareness, performance and knowledge of environmental issues.
- Establish and continually improve environmental objectives for inclusion in project planning and management.
- Ensure waste minimisation principles are established and applied to project operations; and
- Commitment to ensuring all personnel and subcontractors respect the environment including the rights and opinions of local communities and the preservation of cultural and heritage locations.

Company Profile – Capability Statement

9. Our Dedication to Quality Assurance:

Our goal is to consistently deliver quality products and exceed client expectations. We accomplish this through considerable effort and expense into management and maintenance of our Quality Management System and the involvement of our employees who support and uphold the Quality Management System.

Cheshire Contractors' Quality Management System fully aligns to ISO 9001 :2015

10. Projects – refer to www.cheshirecontractors.com.au/projects

DRFA Road Restoration Works

Mareeba Shire Council \$2,400.00 (2025)

Cheshire Contractors were engaged by Mareeba Shire Council to carry out restoration works on a number of roads impacted by the Northern and Central Queensland Monsoon and Flooding. Cheshire contractors commenced the project July 2025. The affected roads, located across rural and remote areas of the Mareeba region, required extensive rehabilitation to restore safe and reliable access for the community.

The scope of works included traffic management, environmental protection measures, drainage repairs, earthworks, pavement reconstruction, and sealed pavement restoration. With several sites situated in difficult terrain and limited access areas, the project demanded a high level of planning, coordination, and technical expertise.

Tablelands Regional Council \$3,130,000 (2025)

Cheshire Contractors were engaged by the Tablelands Regional Council to restore multiple road assets damaged during the Northern and Central Queensland Monsoon and Flooding Event, which occurred between December 2022 and March 2023. The affected infrastructure was located in remote, mountainous regions, requiring extensive rehabilitation to restore full functionality and meet safety standards.

The scope of work involved a wide range of civil construction activities, including but not limited to: traffic management, environmental protection measures, drainage repairs, bulk earthworks, pavement reconstruction, and sealed surface remediation. Working within rugged terrain and restricted-access areas demanded meticulous planning, advanced logistical coordination, and the use of specialised equipment and techniques.

Cassowary Coast Regional Council - TC Jasper REPA Reconstruction \$6,000,000.00 (2025)

Cheshire Contractors was engaged by Cassowary Coast Regional Council to deliver critical reconstruction works under the Restoration of Essential Public Assets (REPA) program, following the impact of Tropical Cyclone Jasper, which crossed the Queensland coast as a Category 2 system on 13 December 2023.

The project involved the rehabilitation of damaged civil infrastructure located in remote and rugged terrain. Restoration efforts were essential to re-establish functionality, ensure community access, and meet strict safety and compliance standards.

Operating in geographically challenging and restricted-access areas required advanced planning, specialist plant and equipment, and precise execution. Cheshire Contractors demonstrated its capability in managing complex logistics, working within environmentally sensitive zones, and delivering high-quality outcomes under tight timelines and adverse conditions.

This project highlights our expertise in disaster recovery, regional infrastructure restoration, and civil works delivery in remote environments.

Company Profile – Capability Statement

Tablelands Regional Council \$6,000,000.00

Cheshire Contractors were engaged by the Tablelands Regional Council to execute the restoration of multiple road infrastructure assets adversely impacted by the Northern and Central Queensland Monsoon and Flooding Event, which occurred between December 2022 and March 2023. The damaged assets were distributed across geographically remote and topographically complex regions, necessitating comprehensive reconstruction works to re-establish structural integrity, operational functionality, and compliance with applicable safety and engineering standards.

The scope of works comprised a diverse array of civil engineering activities, including (but not limited to): implementation of traffic management systems; installation of environmental protection and erosion control measures; remediation and reconstruction of hydraulic drainage structures; execution of bulk earthworks; rehabilitation and reconstruction of pavement layers; and remediation of sealed pavement surfaces. The constrained working conditions—characterised by steep terrain, limited site access, and variable geotechnical profiles—demanded a high degree of technical rigour in project planning, sequencing, and execution.

The project required the deployment of specialised plant, equipment, and construction methodologies tailored to the unique challenges presented by the site conditions. Works were undertaken in accordance with relevant design specifications, statutory requirements, and contractual milestones.

Despite the inherent logistical and geotechnical complexities, Cheshire Contractors successfully delivered all components of the project within the agreed timeframes and to the specified quality standards. The project outcomes met or exceeded the expectations of both the Superintendent and the Tablelands Regional Council, with formal commendation issued in recognition of the Contractor’s technical proficiency, project management capability, and commitment to quality assurance.



Company Profile – Capability Statement

Construction of Hardstand at the New Southern Barge Ramp

Ports North \$300K

Cheshire Contractors were engaged to construct a 10,000m² hardstand at the New Southern Barge Ramp in Portsmith, Cairns. The project involved a range of complex tasks, including geotextile and geogrid installation, pavement construction, and landscaping. The work was performed under stringent compaction and density requirements, ensuring a durable and functional hardstand for future port activities.

The scope of the work included sediment control, installation of select fill and pavement gravel, geotextile and geogrid installation, subgrade compaction, and landscaping with turf and crusher dust. In addition, the access road was tied into the hardstand, and stabilisation works were conducted on the subgrade due to saturation before pavement placement.

Despite the challenges posed by subgrade saturation, Cheshire Contractors completed the project on time. The successful coordination of materials, efficient management of daily deliveries, and adherence to the technical specifications resulted in high client satisfaction, with the Principal praising the quality and timely completion of the work.

Blackman Road Causeway Upgrades – Warrami

Cassowary Coast Regional Council \$1.2M

Cheshire Contractors successfully delivered the Blackman Road Causeway Upgrades for the Cassowary Coast Regional Council, overcoming significant challenges posed by the wet season, Cyclone Jasper, and localised flooding. Despite these conditions causing delays, the project was completed on budget with no additional costs.

The works involved lowering four causeways and upgrading culvert structures to improve flood resilience and access for the surrounding community. Given the area's active sugar cane farming operations, we carefully managed construction activities to minimise disruption to farm machinery and harvesting schedules.

Our scope included excavation, culvert installation, pavement construction, drainage improvements, and rock batter protection. Through careful planning, adaptability, and a commitment to quality, safety, and environmental standards, we delivered a durable and effective infrastructure upgrade for the region.



Company Profile – Capability Statement

Mountain View Estate Stage 3 – Innisfail

Five Rivers Construction \$1.2

Cheshire Contractors successfully delivered Stage 3 of Mountainview Estate in Mighell, providing essential infrastructure for 15 new residential allotments. The project involved comprehensive earthworks, retaining wall construction, roadworks, stormwater drainage, and the installation of water, sewer, power, and telecommunication services.

Given the complexity of the works, careful planning and coordination were required to manage site access, erosion control, and traffic safety while ensuring minimal disruption to neighbouring properties. Key elements of the project included the construction of stormwater quality improvement devices, road pavements, footpaths, and landscaping to enhance the estate's **amenity** and long-term sustainability.

Through our expertise in civil construction and commitment to quality, we delivered a well-planned and fully serviced development that supports the growing community in Innisfail.

Industrial Subdivision – Wangan

Private Developer \$300K

Cheshire Contractors successfully delivered the Wewak and Gray Street Industrial Subdivision, constructing six newly aligned industrial allotments with supporting infrastructure. The project involved earthworks, roadworks, stormwater drainage, water reticulation, and underground service conduits to facilitate future development.

A key challenge was maintaining access for existing businesses and tenants operating within the industrial sheds on-site. Through careful planning and staged construction, we minimised disruptions while ensuring continual service access. Additionally, we remained adaptable to potential site conditions, including latent issues such as buried waste, to keep the project progressing efficiently.

With our commitment to quality, communication, and stakeholder coordination, we delivered a well-structured industrial precinct that supports business growth in Wangan.



E2G – Cairns Southern Access Corridor Edmonton to Gordonvale Bruce Highway

John Holland Seymour White AECOM Joint Venture \$4.5M

The E2G roadworks project is a \$481m upgrade of 10.5km of Bruce highway between Edmonton and Gordonvale. This roadworks project will make travelling safer, more reliable and improve flood resilience for North Queensland. We at Cheshire Contractors were pleased to work with JSA JV in the construction of the project by assisting with the hire of our mobile plant equipment and skilled operators. Some of our heavy machinery working onsite included D8T Dozer, Scrapers, Graders, Semi Water Trucks, Backhoes, Moxy Dump Trucks and an 815 Compactor.

Company Profile – Capability Statement

Brodie Street, Hughenden - Revitalisation Roadworks

Flinders Shire Council \$2.5M

Brodie Street in Hughenden is one of the main thoroughfares for travellers around Queensland. Flinders Shire Council contracted Cheshire Contractors to do a complete upgrade on Brodie Street, which involved lowering the existing road levels across the road and to the surrounding shops, installing new asphalt, and line marking to comply with disability access standards. The structures in the street were also revitalised with a fresh new look which included seated areas with USB charging stations and extended seating areas to the local cafes. A dual car charger was also installed for the environmentally friendly vehicles driving in and around Hughenden. This project was completed in time and on budget while working with the Flinders Shire Council, the community and the local businesses of Brodie Street.



Company Profile – Capability Statement

10.8 Hughenden - Recreational Lake and Surrounds Precinct Project

Flinders Shire Council - \$12 M



Cheshire Contractors were contracted by Flinders Shire Council to complete The Hughenden Recreational Lake and Surrounds Major Works contract. The construction of the recreational lake is located on the eastern side of the Hughenden township on land, which is adjacent to the Historical Coolabah Tree. This tree holds cultural significance linked to two relief expeditions searching for Burke & Wills, the site is locally known as Station Creek. The works seen 800,000 cubic metres of dirt excavated, with the lake at completion being approximately 800m long and 250m wide and the average depth will be 3.2m. The project required the construction of a 4-meter-high earth wall embankment, spillway, and excavation of the actual lake area, a boat ramp, and landscaping around the edge of the lake and surrounding parklands. Cheshire Contractors endeavoured to help the local community by employing locals, sourcing products through local suppliers and engaging with local community groups.

Company Profile – Capability Statement

11. How to get in Touch with Us

Office Phone No.	07 4052 2700
Street Address:	546-550 Bruce Hwy, Woree QLD 4868
	Lot 1 Fox Rd, Birkalla QLD 4854
	9 Lammermoor St, Hughenden QLD 4821
Email Address:	admin@cheshirecontractors.com.au
John Della Ricca – Managing Director	0408 770 117
Shannon Cheshire – Operations/Contract Manager	0418 796 868
Steve Camp – Project Manager & Supervisor	0427 353 255

