



## TCS AMP-XC™ LIQUID CONCENTRATE

Formulated with Microbial Metabolites, Humic & Iron



## 6 PROBLEMS → 1 SOLUTION

An Innovative Solution that Solves the Top Turfgrass Issues

**TCS AMP-XC™ Liquid Concentrate** is an innovative fertilizer biocatalyst and soil amendment. AMP-XC™ consists of microbial metabolites (protein hydrolysates, amino acids, organic acids, fulvic acids, natural bacteria) that increases the availability and uptake of plant nutrients and improves plant performance to get more from fertility management programs. AMP-XC™ technology allows you to restore and protect your turf, fairways and ornamentals and increases the uptake and effectiveness of your current nutrient management program.

### KEY INGREDIENTS

- Microbial Metabolites (AMP-XC™)
- Humic (7.0%)
- Iron, EDTA (.4%)

### SPECS

**ITEM #903767 - 1 GAL**  
COVERAGE: 128,000 sq ft

**ITEM #904323 - 2.5 GAL**  
COVERAGE: 320,000 sq ft

**ITEM #904324 - 275 GAL Tote**  
COVERAGE: 808.1 acres

### APPLICATION RATES

#### TURF AND LANDSCAPE PLANTINGS - GOLF COURSE GREENS, TEES AND FAIRWAYS:

Apply 2 oz. per 1,000 sq. ft. followed by 1 oz. per 1,000 sq. ft. per month or every time you fertilize.  
**Hydroseeding:** Two (2) oz. per 1,000 sq. ft.

#### ATHLETIC FIELDS:

Apply 2 oz. per 1,000 sq. ft. (2 3/4 quarts per acre) every time you fertilize.

#### NURSERIES:

**Foliar:** Initial - 42 oz. per 100 gallons of water.  
**Maintenance Program (Every 3-4 weeks):** 21 oz. per 100 gallons of water.

**Drench:** Initial - 21 oz. per 100 gallons of water.  
**Maintenance Program (Every 3-4 weeks):** 21 oz. per 100 gallons of water.

### SALES CONTACT

### KEY BENEFITS

- 1 Deeper & Stronger Roots**
- 2 Stress Recovery & Prevention**
- 3 Deep Greening**
- 4 Seed Establishment & Germination**
- 5 Nutrient Availability & Uptake (up to a 30% increase!)**
- 6 Restrictions or Blackout APPROVED**

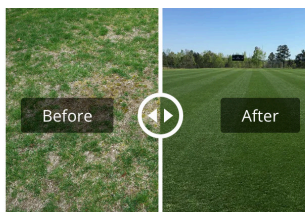
### PROBLEMS SOLVED

- Insect damage, nutrient deficiencies, sandy and clay soils, poor moisture storage, lack of organic material, sod establishment
- Restores and/or prevents abiotic and biotic stresses (drought, salt, temperature, various disease and insect stresses, mechanical agitation from foot traffic)
- Iron deficiency, Chlorosis (yellowing of leaf tissue due to a lack of chlorophyll)
- Increases the speed of seed germination on turf, ornamental or flowering plants and assures successful establishment
- Corrects nutrient deficiencies, unlocks nutrients in the soil, increases the efficient use of nutrients applied, prevents nutrient loss due to leaching
- Approved application during NPK restrictions by law, customer or season. Performs as a nutrient harvester, extracting nutrients already in the soil to improve plant health

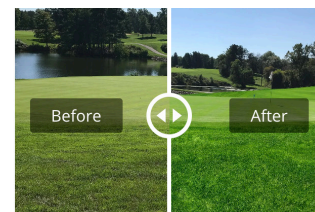
#### 1. Deeper & Stronger Roots



#### 2. Stress Recovery & Prevention



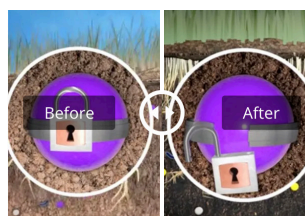
#### 3. Greening



#### 4. Seed Establishment



#### 5. Nutrient Availability & Uptake



#### 6. Restrictions or Blackout

