

ST. LAWRENCE CATHOLIC CHURCH

ANNUAL REPORT / REPORTE ANUAL



July 1, 2023 — June 30, 2024
319 Grayson Hwy, Lawrenceville, GA 30046
(770)963-8992 ♦ www.saintlaw.org

Message from the Pastor

VERY REV. HENRY ATEM, V.F.

My dear parish family,

Each year, I have the distinct honor of presenting you with the parish's annual report. This report normally captures the stories and data, programs and activities, which communicate the financial, spiritual, and pastoral health of our parish family. It also highlights how we have impacted our local community through our generosity and partnership. This year, our report is special, as it marks the end of the celebration of the 50th anniversary of the establishment of our parish and the beginning of our Growing in Faith Together (G.I.F.T.) building project. As a community of faith, we have been extremely blessed by the manifold ways in which we have experienced God's grace and providence. Our 50th anniversary and building project are but little expressions of how God's bounty continues to sustain our community of faith. I am exceedingly grateful to each family here at St. Lawrence whose sacrifice of time and resources have helped us to witness another bountiful season. Our annual report indicates that our community continues to enjoy a steady growth in both numbers and impact. Our outreach services, faith formation and liturgical celebrations have transformed many lives and given us a rather practical opportunity to build a stronger, holier and more generous community. Through you, I have witnessed God's power and grace in our community.

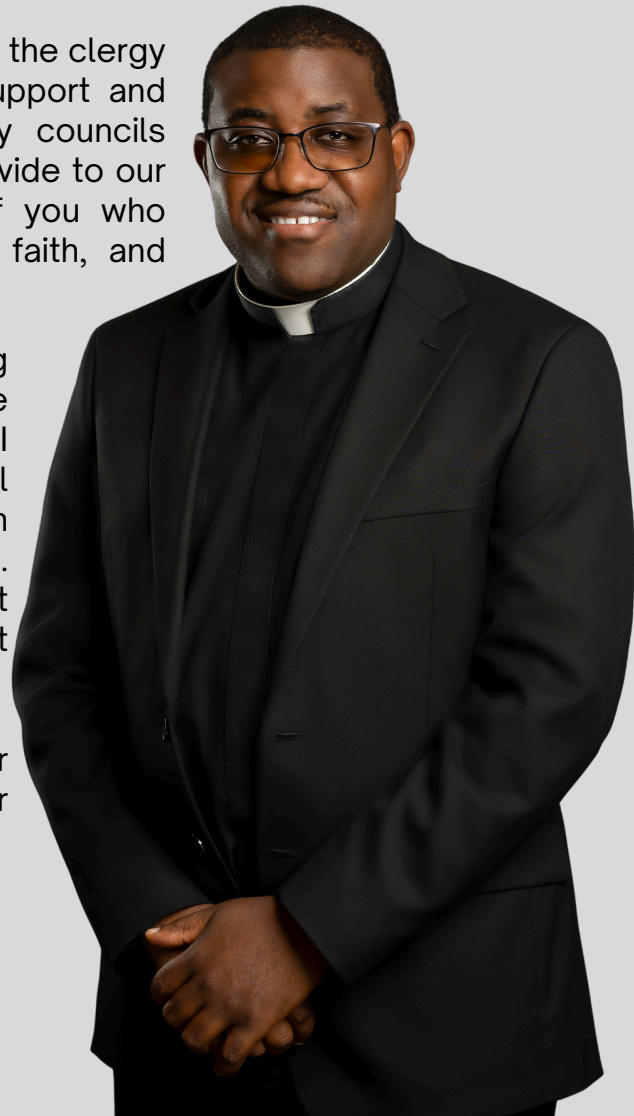
I take this opportunity to express my sincere gratitude to the clergy and members of our parish staff for their selfless support and sacrifices. I am immensely indebted to our advisory councils (Pastoral and Finance) for the steady oversight they provide to our functions and operations. Above all, I thank each of you who continue to sustain the parish with your generosity, faith, and prayers.

Finally, I am grateful that we embarked on this building project together, beginning with the construction of the adoration chapel. As we seek to grow in faith together, I remind you that Eucharistic devotion offers us a practical orientation toward Christ. It is my hope that our parish community never wavers from this invaluable treasure. Let us continue to intensify our love for Christ in the Most Holy Eucharist, for it is God's sacramental presence that nourishes our minds and souls on life's journey.

I pray that God will continue to bless and reward our efforts and that He blesses each of you and your families.



Very Rev. Henry Atem



Encountering Christ in Parish Milestones



CELEBRATION OF SACRAMENTS

QUINCEAÑERAS

14 Masses

-26% from 2023

INFANT BAPTISM

55 Baptisms (Ages 0-6)

-44% from 2023

FIRST COMMUNION

251 First Communicants

+29% from 2023

DEATH/FUNERALS

74 Funerals

+12% from 2023

MINOR BAPTISM

22 Baptisms (Ages 7-17)

+9% from 2023

CONFIRMATION

200 Confirmandi

+12% from 2023

EUCCHARISTIC GUARDIANS

361 Adorers

+81% from 2023

ADULT BAPTISM

17 Baptism (Ages 18+)

+83% from 2023

MARRIAGE

21 Marriages (1 Interfaith)

-38% from 2023

PARISHIONERS SERVING IN 1 OR MORE MINISTRIES

1978 Individuals

RCIA/RICA

49 Catechumens & Candidates

ANOINTING OF THE SICK

81 Visits for Anointings

HOURS OF EUCCHARISTIC ADORATION

2,973 Hours

EUCCHARIST TO THE HOMEBOUND

1236 visits

+42% from 2023

The Body of Christ is in
our church.

~ Betsy Podriznik

Christ at the Heart



Building Foundations

ST. LAWRENCE PRESCHOOL



During the 2023-24 school year, St. Lawrence Preschool Staff had the privilege of serving 90 children in our weekday program. With a staff of 20 caring, professional educators, our children learn the social and emotional skills that are the foundation for life-long learning. In addition, we focus on the physical, spiritual and academic growth of each child entrusted to our care. Our families also enjoy preschool activities designed to engage the whole family, such as our "Thankful Together" celebration, concerts and more.



Growing Disciples: Nurturing Faith Across Generations



In our vibrant community, faith formation is a transformative journey for all ages. This past year, we've seen remarkable growth through impactful initiatives.

At **Camp Hidden Lake**, 27 middle schoolers—14 of whom were first-time attendees—deepened their relationship with the Lord through daily Mass, Adoration, and the Rosary. They also enjoyed activities like ziplines, canoeing, and obstacle courses, all while experiencing God's creation.

During the **Catholic Heart Work Camp**, 30 campers and chaperones traveled 482 miles to Knoxville, TN, to complete 45 service projects, including beautifying classrooms and building accessible ramps, while forging lasting friendships.

The **Steubenville Youth Retreat** provided three teens with enriching talks and spiritual growth opportunities, further solidifying their faith.

The success of these programs relies on our dedicated team of 92 catechists and aides, whose generous contributions make it all possible. As Philippians 1:6 reminds us: *“May the one who began a good work in you continue to complete it until the day of Christ Jesus.”*

Our enrollment reflects a strong commitment to faith formation: 433 elementary students (K-5), 177 middle schoolers (6-8), 309 high schoolers (9-12), and 513 adults participated in programs. This year, we offered 27 programs, including 20 unique Adult Faith Formation initiatives, five cycles of The Rescue Project, and two groups of Holy Families Parent Coffee.



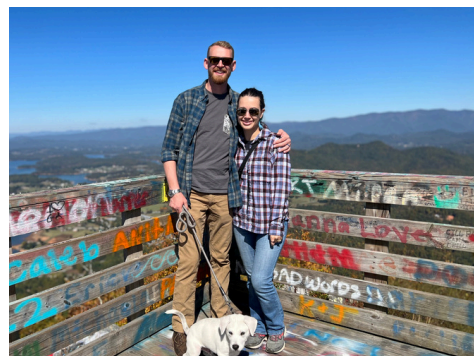
Together, we are nurturing faith across generations, ensuring that the light of Christ shines brightly in our community.

A Story of Faith:

Meet Michael and Michelle Johnson

Michael and Michelle were born and raised as devout Jehovah's Witnesses. Michael served as a "ministerial servant" (deacon) for 13 years, but six and a half years into their marriage, he began grappling with serious doubts about the faith's obscure teachings. Troubled and searching for truth, Michael shared his concerns with Michelle. However, she did not agree with his perspective.

The couple understood the risk they faced: Jehovah's Witnesses adhere to strict shunning policies. Regardless of Michelle's stance, they knew they could lose their relationships with friends and family if Michael left the faith. Michael's quest for answers led him to delve deeper into Christianity. Meanwhile, Michelle embarked on her own journey—not to join him, but to prove him wrong. In 2021, Michael encountered writings from the Early Church Fathers, introduced by two friends, Austen and John. Discovering these ancient teachings felt like uncovering a hidden treasure, yet it also brought a deep sense of betrayal; he realized these truths had been omitted from his religious upbringing. For Michelle, her journey involved comparing the New World Translation of the Bible with the New International Version. This side-by-side study revealed stark inaccuracies and, most profoundly, the deity of Christ.



Together, Michael and Michelle explored several Christian traditions, attending Baptist and Anglican churches. Eventually, their search for the fullness of truth led them to St. Lawrence Catholic Church—a destination neither had anticipated. To their surprise and joy, they discovered that the richness of faith they had been seeking was found in the Catholic Church.

Michael and Michelle were overjoyed to be welcomed into the Church at the Easter Vigil in 2024, surrounded by their dear friends and godparents, Grant and Bridgette Adams. Now, as grateful members of St. Lawrence, they treasure the support and guidance of the parish priests and deacons in their ongoing walk with Christ. Reflecting on their journey, Michelle shares, *"We did lose friends, and thanks be to God, our family still speaks to us. But it doesn't compare to all that we've gained."* Her words resonate with the promise in Matthew 19:29: *"And everyone who has left houses or brothers or sisters or father or mother or children or lands for my name's sake will receive a hundredfold, and will inherit eternal life."*

Today, Michael serves in the parish's Safety and Security Ministry, and both he and Michelle are active in the Young Adult Ministry. They eagerly look forward to deepening their faith and finding new ways to serve their community in the love of Christ.



Empowered to Serve: The Work of Our Ministries

Embracing Life, Empowering Families

The Respect Life Ministry had an extraordinary year of service, touching countless lives across the community. Through the Court Appointed Special Advocate program, 350 pajamas and tracksuits were donated to children in foster care, offering comfort to those who need it most.

The ministry also contributed \$6,300 to Obria Medical Clinic, supporting women with holistic care, while baby showers provided diapers and clothing for new moms in need. Mending the Gap received 360 essential items, including personal care products and adult diapers, to support seniors. Additionally, three homeless mothers were helped with food, furniture, and supplies, while \$800 was donated to the Helping Mamas Organization. The ministry's members are also hands-on. Three volunteers gave over 145 hours at the SVdP Thrift Store, and our efforts at Lawrenceville Co-op resulted in the donation of 11,171 pounds of food and nearly 2,000 hours of service. Catholic Charities benefited from 263 Easter baskets, bringing joy to both children and the elderly. On a more spiritual level, 36 women were spiritually adopted, and 18 moms were prayed for by the parish. The Prayer Shawl Ministry also created and gifted homemade blankets to these 18 moms, offering a tangible sign of care and support. Our partnership with Lightway Recovery led to 42 classes and six craft and dinner events, all designed to uplift those on the path to healing.





A Lifeline of Hope

This year, the St. Vincent de Paul Ministry made a remarkable impact, serving 84 families through the Angel Tree Project and bringing joy to 336 children with Christmas gifts. With 3,379 volunteer hours and 7,156 miles driven, the team completed 263 home visits, providing vital assistance to 765 neighbors. Through utility payments, rental assistance, eviction prevention, temporary lodging, and food vouchers, the ministry offered essential support to families in need—all made possible by the generosity of our parish. The ministry continues to be a source of hope, uplifting lives in our community.

A Legacy of Service and Faith

In 2023-24, the Knights of Columbus, supported by our parish and the Council donated over \$50,000 and served 3,500+ hours, making a significant impact across our community.

Faith: Supported seminarians, provided sacramental gifts, contributed to ministries (Youth, RCIA, Hispanic), and made donations to Quest Radio and Men of Faith.

Families: Led Food for Families, awarded scholarships, and hosted events like the Lenten Fish Fry, Advent Breakfast with Santa, and Trunk or Treat. An important part of the mission of the Knights is to assist in building and strengthening families in our parish and community.



Community: Contributed to Coats for Kids, Global Wheelchair Mission, Camp Hidden Lake, Parish Picnic, and Lawrenceville Co-Op.

Life: Supported Family Promise Haven, post-pregnancy aid, the Baby Bottle Campaign, and donated an ultrasound machine.

For here on earth God's work must truly be our own.

President John F. Kennedy

United in Faith and Fellowship: LOSL experiencing revival

The Ladies of St. Lawrence (LOSL) grew from 20 to 41 active members in FY 2023-2024, playing a vital role in parish life. In September, they partnered with the Lazarus Ministry to provide desserts at the Parish Picnic.

November's **Night of Reflection** featured a talk by Ashley Conner on *The Gift of Preparation*, while December saw LOSL supporting the parish's Angel Tree program. In 2024, LOSL hosted a variety of activities, including sewing burp cloths for the Obria Medical Clinic, and honored Jennell Talley as 2023 Woman of the Year, and provided desserts for the Lenten Fish Frys.

Their **2024 March Lenten Tea** featured a talk by Rachel Conn on *Pierced by Mercy*, which was open (and free!) to all women of the parish. April's meeting explored Theology of Partying, led by seminarian Jacob Butz. The year concluded with a June Bingo night and various contributions to St. Lawrence's 50th Anniversary celebrations. LOSL continues to be a pillar of faith, fellowship, and service in the parish.



“It is inspiring to work with so many giving women who take part and lead in the numerous activities the Ladies of St. Lawrence does for the parish and surrounding community”

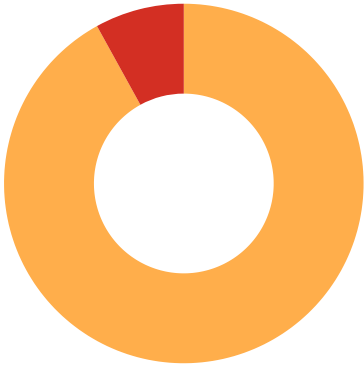
Rosanne Larkins



**“Jesus said to the woman,
‘Your faith has saved you;
go in peace’ ”**

Faithful Stewardship: A Financial Overview of Our Parish

G.I.F.T. CAMPAIGN



Income | \$228,245
Expense | \$19,908



God's Love
Endures
Forever

Balance Sheet — Period Ended June 30, 2024

| ASSETS | 2024 | 2023 |
|---|---------------------|---------------------|
| Checking | \$260,421 | \$457,731 |
| Savings- Operating | \$1,047,259 | \$684,601 |
| Savings- Capital Reserve | \$417,745 | \$265,817 |
| Savings- GIFT | \$97,337 | \$0 |
| Savings- Columbarium | \$469,891 | \$366,349 |
| Savings- Parish Twinning Program | \$55,739 | \$59,100 |
| Endowment Account | \$557,298 | \$322,055 |
| Columbarium Care | \$534,481 | \$479,564 |
| Land, Building, Equipment | \$12,911,011 | \$12,887,801 |
| Building-in-Process | \$153,132 | \$0 |
| TOTAL ASSETS | \$16,504,314 | \$15,523,017 |
| LIABILITIES | | |
| Payables | \$14,943 | \$389 |
| Ministries | \$71,491 | \$86,753 |
| Exchange | \$6,414 | \$6,573 |
| Deferred Revenue | \$38,402 | \$32,132 |
| Total Liabilities | \$131,250 | \$125,847 |
| Net Assets | \$16,373,063 | \$15,397,170 |
| TOTAL LIABILITIES AND NET ASSETS | \$16,504,314 | \$15,523,017 |

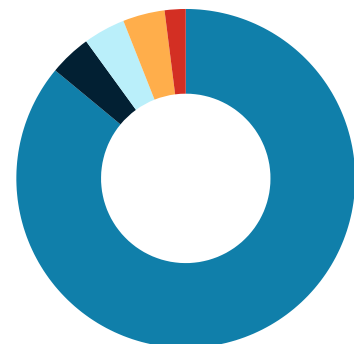
Statement of Activities

FISCAL PERIOD JULY 1, 2023- JUNE 30, 2024

| INCOME | 2024 | 2023 | CHANGE |
|---------------------------------|--------------------|--------------------|---------------|
| Offertory | \$2,183,649 | \$2,116,218 | |
| Preschool | \$276,043 | \$233,504 | |
| Columbarium Sales | \$130,575 | \$142,610 | |
| Ministry | \$122,490 | \$59,606 | |
| Maintaining God's House | \$186,664 | \$155,248 | |
| Archbishop Annual Appeal Refund | \$195,730 | \$159,578 | |
| Georgia Bulletin | \$14,719 | \$10,096 | |
| Endowment | \$177,242 | \$80,824 | |
| Faith Formation | \$116,800 | \$113,899 | |
| Other | \$60,840 | \$32,066 | |
| INCOME TOTALS | \$3,404,752 | \$3,103,648 | 9.7% ↑ |

| EXPENSES | 2024 | 2023 | CHANGE |
|---|--------------------|--------------------|----------------|
| Liturgy | \$448,031 | \$424,886 | |
| Faith Formation | \$419,556 | \$440,222 | |
| Ministry | \$170,287 | \$146,594 | |
| Preschool | \$277,510 | \$269,430 | |
| Administrative | \$854,659 | \$748,766 | |
| Facilities | \$467,153 | \$435,878 | |
| Expense Totals | \$2,637,196 | \$2,417,557 | 9.1% ↑ |
| Total Liabilities and Net Assets | \$767,556 | \$686,091 | 11.8% ↑ |

SOURCES OF INCOME



TOTAL EXPENSES



SCAN ME



For questions, contact Brandy Lake, *Director of Business Operations*, at blake@saintlaw.org, or if you need help setting up recurring offertory gifts or Endowment gifts (assets, will/bequests, or estate plan).

For more information, visit www.saintlaw.org/giving or www.saintlaw.org/endowment

Supporting our Mission

Offertory Fund

Gifts to the Offertory Fund support all of our daily operations: Mass, Ministries, Payroll, Facilities Maintenance, and more. Help us by giving annually or in budgeted amounts throughout the year (monthly, quarterly, etc.). Gifts to our offertory fund are managed by the Pastor, Staff, and members of the finance council. Visit www.saintlaw.org/giving to make an offertory gift.



St. Lawrence Endowment Fund



St. Lawrence has one Endowment Fund managed by the Catholic Foundation of North Georgia (CFNGA) to benefit our parish. Our endowment fund helps ensure the future of our parish and sustains our mission now and forever. A gift to an endowment fund is never spent. Instead, the gifts are protected by law, professionally invested, and grow over time. As the value of the endowment fund grows, our parish receives an annual distribution grant that comes from the earnings of the fund. The distribution grant is used to support the needs of St. Lawrence Catholic Church. Please visit www.saintlaw.org/endowment to learn more or to get started with planned giving.

Growing in Faith Together Campaign

In June 2024, we launched a Parish Capital Campaign to secure our growth now and for the future. This four-phase expansion project seeks to add a new Adoration Chapel, a new Rectory, a new Gym (for expanded sports programs), and reconfiguration of the current gym into a parish hall and additional meeting rooms (for our growing Faith Formation Program). The projected cost of the entire project is \$10 million, and as of November 2024, we have raised a little over \$3 million. Gwinnett is one of the fastest growing counties in the state. This growth necessitates planning and preparation. By joining together in faith and commitment, every family in our parish can help build a strong and welcoming foundation for generations to come. Your support for the G.I.F.T. Campaign is an investment in the spiritual, educational, and community life of our parish family. Let's make this vision a reality—together! Find out more at www.saintlaw.org/gift



Celebrating 50 years of Faith



I remember going to morning Mass with Tee Cogswell, standing there as our children ran around us, and she remained unfazed—a quiet reminder of her and Dave’s devotion to St. Lawrence. My brother and sister-in-law, who were like parents to me, later urged me to leave this parish when they moved to independent living. 'Are you crazy?!' I replied. St. Lawrence is my home, where I want to be laid to rest with my husband. Even though the Catholic Church of St. Monica is close, this church fills me with memories that make me smile and cry. *It will always be where I belong.*

Mary Root





A JOURNEY FROM LOSS TO LOVE

When we moved to St. Lawrence in 1979, we knew no one and used the parish to fulfill our Sunday obligation. After the deaths of three children, we knew we had a large loving family at St. Lawrence that would help us and our children reach God's eternal Kingdom.

with love,
John & Mary Raterman

LOOKING BACK WITH GRATITUDE, GROWING FORWARD IN FAITH

To be able to celebrate the 50 year jubilee at St. Lawrence Church was a golden opportunity to witness and remember those who gathered first to establish St. Lawrence as a parish. From the memory wall, we were able to remember the many parishioners who through trials, tests and so many blessings have brought us here today as such a bright and diverse parish. Many are still with us and their children have their Catholic roots here. All the events served to bring us all closer together and better focused for the future as we continue to grow.

Barbara Lauman



A Year of Jubilee

CLERGY AND STAFF

Fr. Henry Atem, V.F.
Fr. Cristian Cossio
Deacon Rick Hogan
Deacon Terry Millinger
Diácono José Ortiz
Deacon Bob Riddett
Darleine Arce Hernandez
John Brandt
Elizabeth Chinery
Cristina Corbin
Lori Crocker
Andrea Drath
Isaac Falcon
Francella Ford
Wendy Guillory
Tarcy Hernandez
Brandy Lake
Diane Maguire
Cathy Maloney
Kathi McKenna
Michelle Sander
Nic Schmitz

PASTORAL COUNCIL

| | | |
|----------------------|-------------------------|----------------|
| Fr. Henry Atem, V.F. | Masai Maale | Cynthia Rima |
| Fr. Cristian Cossio | Bebita Metellus | Nelson Rivera |
| Cristina Corbin | Beverly Osterbur | Ralph Staunton |
| Lori Crocker | Perry Patterson (Chair) | Tim Trevathan |
| Jim Goldsack | Dennis Reich | Mary Jo Ware |

FINANCE COUNCIL

| | |
|------------------------|-------------------|
| Fr. Henry Atem, V.F. | Perry Patterson |
| Fr. Cristian Cossio | Matt Coles |
| Steve Zahradka (Chair) | Barbara Estes |
| Brandy Lake | Karol Gaines |
| Melissa Kinard | Tom Topoleski |
| | Marianne Van Name |

*Know that the Lord is God.
It is He who made us, and we are His;
We are His people, the sheep of His pasture*

PSALM 100:3



Mensaje del Párroco

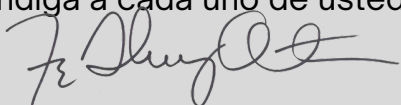
MUY REV. HENRY ATEM, V.F.

Mi Querida Familia Parroquial:

Cada año, tengo el honor especial de presentarles el informe anual de nuestra parroquia. Este informe normalmente captura las historias y datos, los programas y actividades, que comunican la salud financiera, espiritual y pastoral de nuestra familia parroquial. También destaca cómo hemos impactado a nuestra comunidad local a través de nuestra generosidad y colaboración. Este año, sin embargo, nuestro informe es particularmente especial, ya que marca el final de la celebración del 50 aniversario del establecimiento de nuestra parroquia y el comienzo de nuestro proyecto de construcción Creciendo Juntos en la Fe (G.I.F.T.). Como comunidad de fe, hemos sido profundamente bendecidos por las muchas maneras en que hemos experimentado la gracia y la providencia de Dios. Nuestro 50 aniversario y nuestro proyecto de construcción son solo pequeñas expresiones de cómo la generosidad de Dios continúa sosteniendo nuestra comunidad de fe. Estoy inmensamente agradecido a cada familia aquí en San Lorenzo, cuyo sacrificio de tiempo y recursos nos ha ayudado a presenciar otra temporada llena de bendiciones. Nuestro informe anual indica que nuestra comunidad continúa disfrutando de un crecimiento constante tanto en número como en impacto. Nuestros servicios de alcance, formación en la fe y celebraciones litúrgicas han transformado muchas vidas dándonos una oportunidad práctica de construir una comunidad más fuerte, más santa y generosa. A través de ustedes, he sido testigo del poder y la gracia de Dios en nuestra comunidad.

Quiero aprovechar esta oportunidad para expresar mi sincera gratitud al clero y a los miembros de nuestro personal parroquial por su apoyo desinteresado y sus sacrificios. Estoy inmensamente en deuda con nuestros consejos asesores (Pastoral y Financiero) por la supervisión constante que brindan a nuestras funciones y operaciones. Sobre todo, agradezco a cada uno de ustedes que continúan apoyando la parroquia con su generosidad, fe y oraciones.

Finalmente, agradezco que hayamos comenzado juntos este proyecto de construcción, empezando por la construcción de nuestra capilla de adoración. Mientras buscamos crecer juntos en la fe, les recuerdo que la devoción Eucarística nos ofrece una orientación profunda hacia Cristo. Mi esperanza es que nuestra comunidad parroquial nunca vacile ante este tesoro invaluable. Continuemos intensificando nuestro amor por Cristo en la Santísima Eucaristía, ya que es la presencia sacramental de Dios la que alimenta nuestras mentes y almas en el camino de la vida. Ruego para que Dios continúe bendiciendo y recompensando nuestros esfuerzos y que bendiga a cada uno de ustedes y a sus familias.



Muy Reverendo Henry Atem



Fe en Movimiento: Misión y Ministerio en Nuestra Comunidad

En nuestra parroquia, la devoción a María se manifiesta cada domingo a través del rezo del Santo Rosario en el **Ministerio Mariano**. Este año, hemos rezado 2 novenas a Nuestra Señora de Guadalupe y 77 rosarios, profundizando nuestra fe y acercándonos a su abrazo maternal. El grupo **Apóstoles de la Palabra** ha llevado el amor de Dios a nuestros vecinos, compartiendo la Biblia peregrina con 29 familias, organizando 36 posadas y rezando 46 rosarios en hogares. Durante el retiro **LLASU (Llamados a Ser Uno)**, 14 parejas aprendieron herramientas para fortalecer su comunicación y su relación con Cristo.

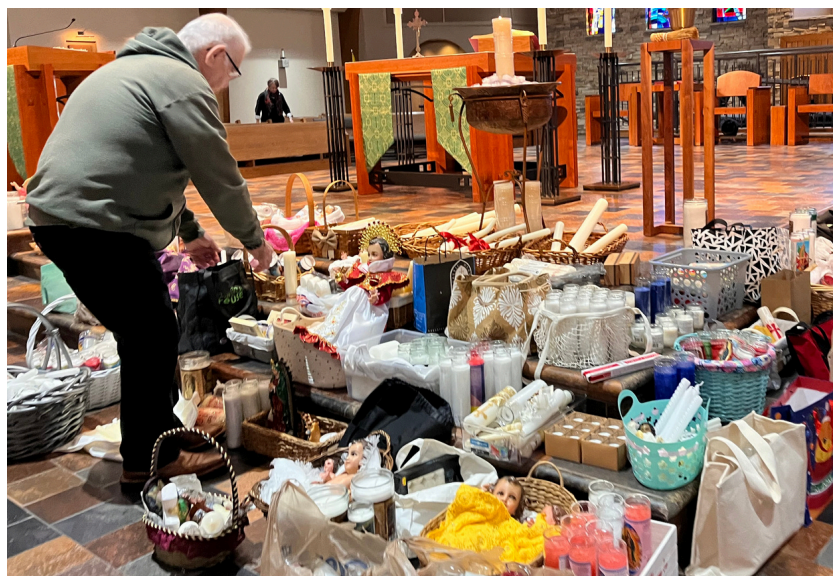
Además, el **Proyecto Rescate** ha comenzado a formar líderes para fomentar el crecimiento espiritual en toda la comunidad. Nuestro **Retiro de Cuaresma** ofreció un espacio para la reflexión y la preparación hacia la Pascua. Gracias a la generosidad de la comunidad, hemos distribuido 235 bolsas de alimentos a familias necesitadas, demostrando que juntos podemos marcar la diferencia.

A través de estas iniciativas, seguimos construyendo una comunidad de fe, amor y servicio, guiados por el amor de Dios y la intercesión de la Virgen María.



La obra de Dios en la Tierra debe ser verdaderamente la nuestra.

Presidente John F. Kennedy



Apoyando nuestra Misión

Un Fondo de Ofertorio

Las donaciones al Fondo del Ofertorio apoyan todas nuestras operaciones diarias: Misa, Ministerios, Nómina, Mantenimiento de las Instalaciones, y más. Ayúdenos dando anualmente o en cantidades presupuestadas a través del año (mensual, trimestral, etc.). Las donaciones a nuestro fondo de ofertorio son administradas por el párroco, el personal y los miembros del consejo de finanzas. Visite www.saintlaw.org/giving para hacer un donativo al ofertorio.

Campaña Capital Creciendo Juntos en la Fe (G.I.F.T.)

Este proyecto de expansión de cuatro fases busca añadir una nueva Capilla de Adoración, una nueva Rectoría, un nuevo Gimnasio (para ampliar los programas deportivos), y la reconfiguración del gimnasio actual en un salón parroquial y salas de reuniones adicionales (para nuestro creciente Programa de Formación de Fe). El costo proyectado de todo el proyecto es de \$10 millones, y a partir de noviembre de 2024, hemos recaudado un poco más de \$3 millones. Gwinnett es uno de los condados de más rápido crecimiento en el estado. Este crecimiento requiere planificación y preparación. Al unirse en la fe y el compromiso, cada familia en nuestra parroquia puede ayudar a construir una base fuerte y acogedora para las generaciones venideras. Su apoyo a la Campaña G.I.F.T. es una inversión en la vida espiritual, educativa y comunitaria de nuestra familia parroquial. Hagamos juntos realidad esta visión. Más información en www.saintlaw.org/es/GIFT.

Fortaleciendo nuestra comunidad





thanks
for your
support



Give Now
Donar Ahora



St. Lawrence G.I.F.T. Campaign Prayer

Almighty God and Father,
You bestow abundant goodness
upon all the earth. Grant us, we pray,
the freedom and joy to serve you
both in word and deed.

Create in our parish family
a spirit of prayer, sacrifice and love
that we may be worthy stewards of the gifts
You entrust in our care.

Fill us with the grace that we need
so that under your providential care
and the guidance of the Holy Spirit,
our Growing in Faith Together capital campaign
may come to a successful completion

Help us to realize that our sacrifice for
the growth of our beloved Catholic
faith and the future of Saint Lawrence parish is in
accord with your divine plan. Amen.

Oración por la Campaña G.I.F.T. de San Lorenzo

Dios y Padre Todopoderoso,
Otorgas abundante bondad
sobre toda la tierra.
Concédenos, te lo pedimos,
la libertad y la alegría de servirte
tanto de palabra como de obra.

Crea en nuestra familia parroquial
un espíritu de oración, sacrificio y amor
para que seamos dignos administradores de los
dones que nos confías.

Llénanos de la gracia que necesitamos
para que bajo tu cuidado providencial y
la guía del Espíritu Santo,
nuestra Campaña Capital,
Creciendo Juntos en la Fe,
pueda llegar a una conclusión exitosa.

Ayúdanos a darnos cuenta de que nuestro
sacrificio por el crecimiento de nuestra querida
Iglesia Católica, la fe y el futuro de la
parroquia de San Lorenzo están de acuerdo con
vuestro plan divino. Amén.

ST. LAWRENCE
CATHOLIC CHURCH



G.I.F.T.
GROWING IN FAITH
TOGETHER
2024 2029

Growing in Faith Together

NOW AND IN FUTURE