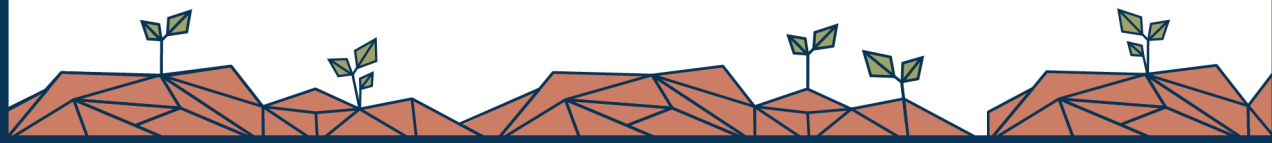


FROM SEEDS TO HARVEST

2019 ANNUAL REPORT





MICHELLE ATWELL

SEND International US Director & CEO



DEAR FRIENDS AND PARTNERS IN THE GOSPEL,



This year SEND International celebrates 75 years of mobilizing God's people, engaging the unreached, and establishing reproducing churches. This has been our heartbeat since 1945 when God called World War II soldiers to return to Japan and the Philippines with his message of love and forgiveness. It continues to be our heartbeat, knowing that there are still places in the world far removed from the influence of a local church.

As we celebrate this milestone year, we are grateful for your prayers and financial support that have carried missionaries to these hard places where they faithfully serve and labor with love. We praise God for how he has used SEND International to make lasting impact for his kingdom all these years.

We also look forward, seeking out new opportunities and new places to be the presence of Jesus and to proclaim his word. The stories and videos in this report highlight

gospel seeds, some planted years ago, that we pray will grow into a harvest thirtyfold, sixtyfold, a hundredfold greater than what was sown!

Though the harvest brings us great joy, much fertile land remains untouched. Billions of people around the world have not heard the message of Jesus, much less experienced his love, grace, and forgiveness. Jesus draws our attention to them, calling more laborers to join his harvest.

We do not rest on 75 years of service; we build upon it—with courage, with determination, with gospel-driven love—as we push forward to the ends of the earth.

Michelle Atwell

Michelle Atwell
SEND International US Director & CEO



GOD GIVES THE GROWTH

The instructions on the back of a seed packet make sowing and reaping sound so easy. Plant the seeds in the proper place. Water them. Wait “x” number of days. Enjoy your fruit.

As anyone who has actually tried to garden knows, it's not so simple. The seed packet forgets to mention the fickle weather. It says nothing about the work it takes to develop nourishing soil and to protect baby plants from weeds and worms or almost-ripe fruit from squirrels and birds.

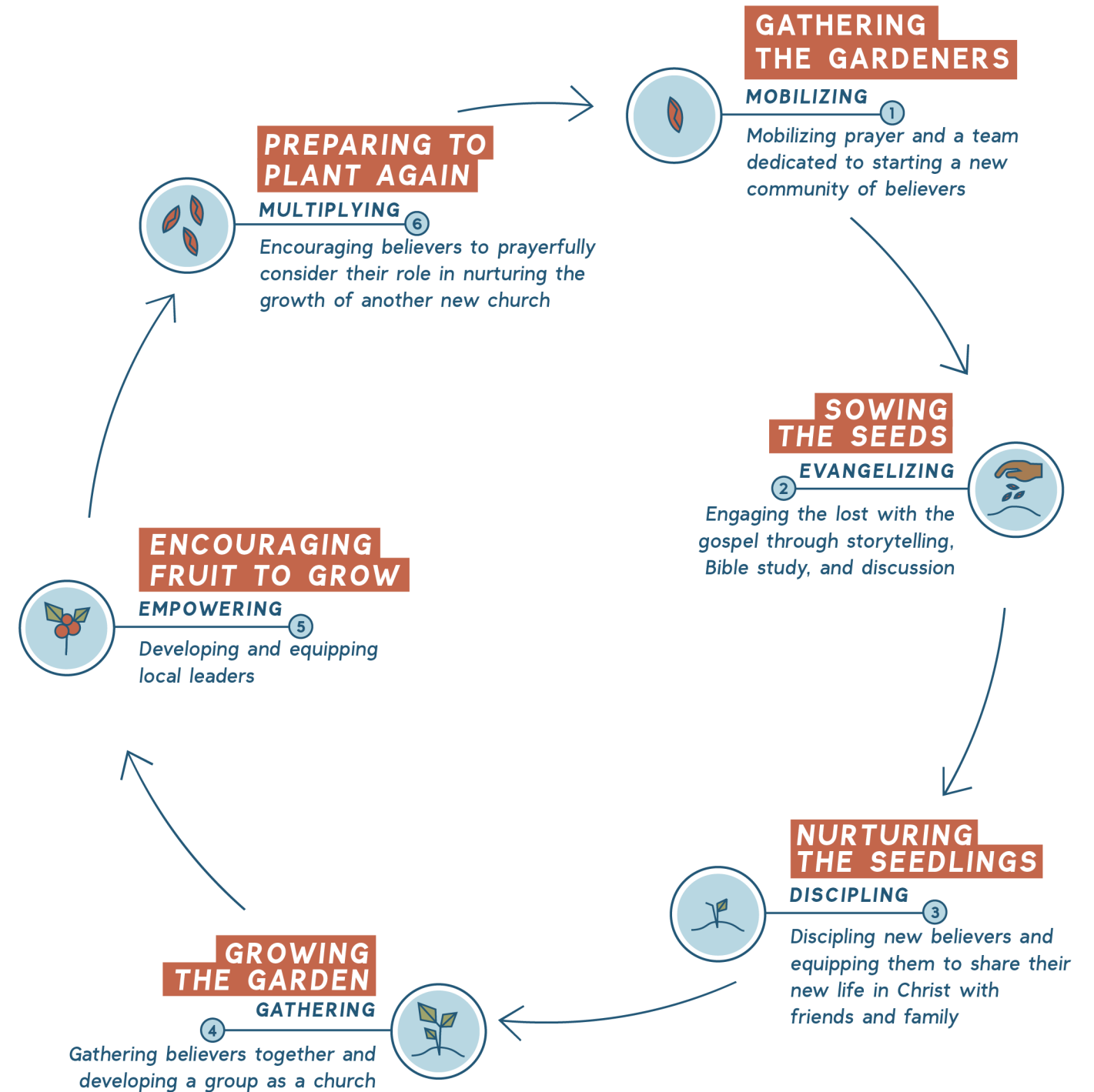
Producing fruit takes work. Perhaps it's a labor of love, but it's labor nonetheless.

Missionaries know this. Though a church plant generally goes through the stages shown on the next page, no one chart can capture every bud on the path toward belief, every unusual surge in growth, every pest that threatens to steal God's fruit, every cluster of changed lives.

Thankfully, we rely on the God who cultivates human souls, planting love, joy, peace, patience, kindness, goodness, faithfulness, gentleness, and self-control. Praise God, for he is the one who gives the growth.

“STILL OTHER SEEDS FELL ON GOOD SOIL. IT CAME UP, GREW AND PRODUCED A CROP, SOME MULTIPLYING THIRTY, SOME SIXTY, SOME A HUNDRED TIMES.”

MARK 4:8 (NIV)



THAILAND

RESCUING
AT-RISK
TEENS



The Shan people live desperate lives. These refugees face extreme poverty and often see prostitution as the only hope for a changed life. Our SEND team offers another way—Jesus' way. By offering educational scholarships and a safe living space, we give at-risk Shan teens opportunities to know Christ, to grow in Christ, and to show Christ to their Buddhist families. We trust that their blooming faith will result in a remarkable harvest!

"YOU HAVE TO SHOW THEM THAT YOU HAVE A CHANGED LIFE SO THAT THEY WILL WANT A CHANGED LIFE, TOO."

NUAN, SHAN
DORM MOM

SEND ASIA

- 15 New church plants
- 7 Ongoing church plants
- 1 Church turned over to national leadership
- 20 Unreached people groups engaged
- 176 Decisions for Christ

RELIGIOUS
GROUP FOCUS:
Tribal/Animist,
Unreligious/Secular,
Muslim, Buddhist

Ministry launched in 1945

AREAS WHERE WE
SERVE IN ASIA:

- 5 Chinese Ministries
- Japan
- Southeast Asia
- Taiwan
- Thailand

SERVING ON THE FIELD

130

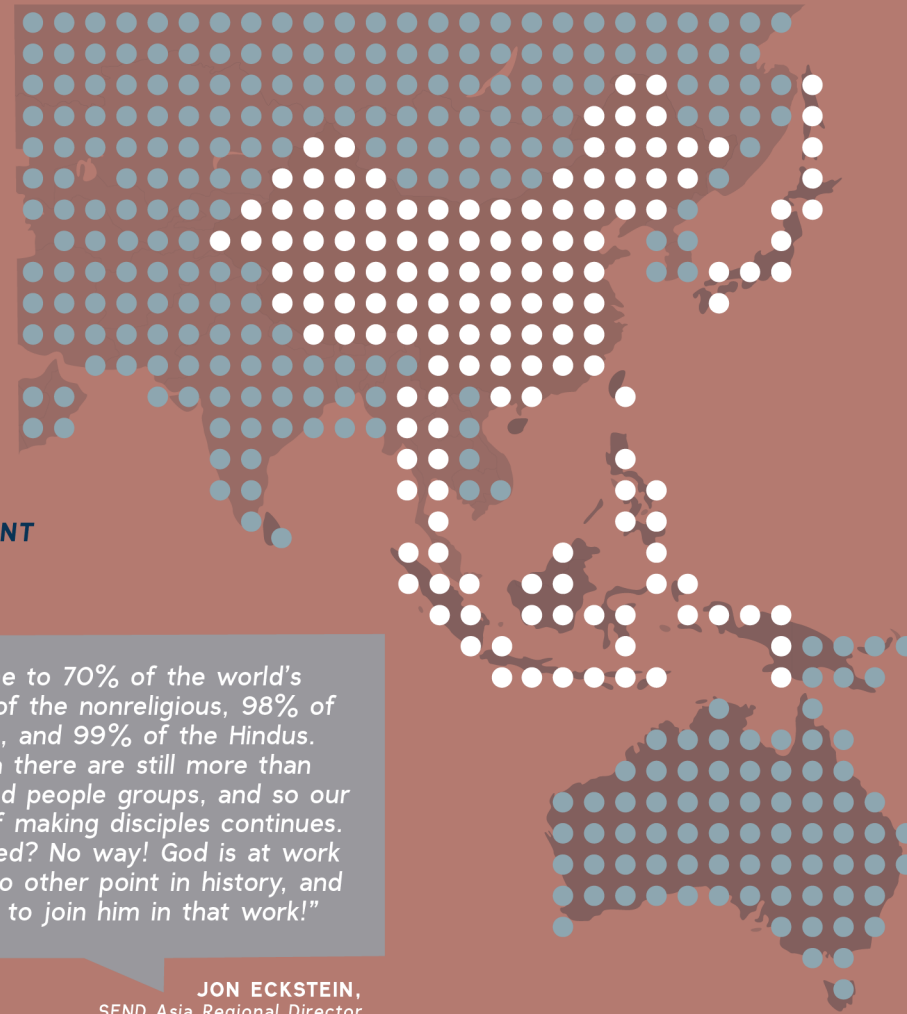
- 20 PREPARING TO GO
- 7 SENT FROM SEVEN DIFFERENT COUNTRIES

PREPARING TO GO

- Canada,
- East Asia,
- Germany,
- Hong Kong,
- Philippines,
- Taiwan,
- US

"Asia is home to 70% of the world's Muslims, 77% of the nonreligious, 98% of the Buddhists, and 99% of the Hindus. Today in Asia there are still more than 4,000 unreached people groups, and so our pioneer work of making disciples continues. Am I discouraged? No way! God is at work in Asia like at no other point in history, and you and I get to join him in that work!"

JON ECKSTEIN,
SEND Asia Regional Director



POLAND

DISCIPLES
MAKING
DISCIPLES



Katya was going to conquer the world. And she certainly didn't need God's help to do so.

When this confident young woman moved to Poland from Ukraine, her aunt asked her to attend the international outreach of First Baptist Church.

"As soon as I saw Katya, I reached out to her, even though she kept trying to push me away," said Michelle Hamilton, a SEND missionary. "After a few months she came to know the Lord. Two years later, she told her friend Ali to come talk to me."

Ali was full of questions, but she was staying with her Polish boyfriend. When she heard the gospel, she said, "I know this is right"—but through tears. She wasn't ready to change her living situation.

The Lord changed it for her. Ali's visa ran out and her romantic relationship ended. Katya stayed in Ali's life as the seeds of faith grew and bloomed.

Two years later, Ali told Michelle her good news: She had accepted Christ and was preparing to be baptized.

"Ali's story is exciting because it's not just about making disciples, but about making disciples who know how to disciple," Michelle said.

SEND EUROPE

- 7 New church plants
- 18 Ongoing church plants
- 1 Church turned over to national leadership
- 19 Unreached people groups engaged
- 75 Decisions for Christ

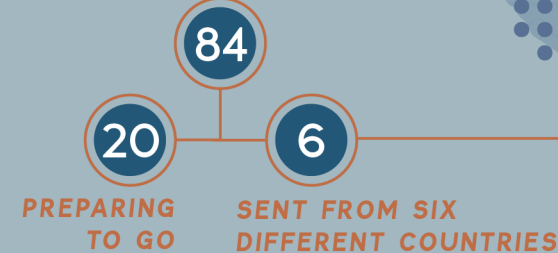
RELIGIOUS
GROUP FOCUS:
Unreligious/Secular,
and Muslim

Ministry launched in **1987**

AREAS WHERE WE
SERVE IN EUROPE:

- 11
- Albanian ministries
 - Bulgaria
 - Croatia
 - Czech Republic
 - Hungary
 - Macedonia
 - Middle East
 - Poland
 - Romania
 - Slovenia
 - Spain

SERVING ON THE FIELD



- Canada
- Germany
- Guatemala
- Philippines
- United Kingdom
- US

"We must not forget the millions of Europeans who are unreached again, lost in their post-Christian world, in need of the gospel that their ancestors once preached. At the same time, the small and struggling churches that do exist must be awakened and challenged to do their part to fulfill the Great Commission. Come and help them reach out to their own communities and to the millions of recent immigrants who now call Europe home."

PHILIP JACKSON,
SEND Europe Regional Director

ALASKA/YUKON



The landscape of Alaska and Northern Canada will take your breath away, but the darkness of village life can break your heart. Out of love for the lost, SEND North workers move into hard, remote places. They forgo luxuries like running water so that Jesus can quench people's spiritual thirst. Our SEND North team plants seeds of faith, knowing that Northern disciples of Christ will go on to cultivate faith in their own communities.

"I THOUGHT JESUS CHRIST WASN'T FOR ME. I WAS LIED TO. AND THAT'S A BIG LIE."

A BELIEVER
IN ALASKA

SEND AMERICAS

- 4 New church plants
- 22 Ongoing church plants
- 11 Unreached people groups engaged
- 33 Decisions for Christ

Ministry launched in **1937**

AREAS WHERE WE SERVE IN NORTH AMERICA: **7**

- Alaska
- Georgia
- Michigan
- Minnesota
- Pennsylvania
- Washington
- Yukon/NW Territories

RELIGIOUS GROUP FOCUS:
Tribal/Animist,
Unreligious/Secular,
Muslim, Buddhist

SERVING ON THE FIELD

55

7

5

PREPARING TO GO

SENT FROM FIVE DIFFERENT COUNTRIES

- Australia
- Canada
- Germany
- Switzerland
- US

"Unreached people groups in North America are truly unreached, regardless of whether they are trapped in poverty and abuse or successfully pursuing the American Dream. Barriers of geography, language, religion, culture, and worldview keep them from understanding the good news. This will not change until God's people cross those barriers to build relationships of love and trust through which we can demonstrate and explain what it means to follow Christ."

JOHN WICKER,
SEND North America Regional Director

UKRAINE

MISSIONS
MOBILIZATION
MINISTRY



In just 25 years, SEND Ukraine has experienced the great joy of seeing the evangelical church in Ukraine move from receiving missionaries to sending their own people to join the harvest in other nations. Our 3M Missions Mobilization Ministry grows missions involvement through education, recruitment, and training. In turn, Ukrainian churches encourage us by displaying amazing generosity, faith, and passion.

"GOD'S LIGHTING THE LAMP IN THE HEARTS OF BELIEVERS THROUGHOUT UKRAINE."

CHAD WIEBE,
Director of SEND 3M

SEND EURASIA

- 6 New church plants
- 16 Ongoing church plants
- 1 Church turned over to national leadership
- 13 Unreached people groups engaged
- 90 Decisions for Christ

Ministry launched in **1989**

AREAS WHERE WE SERVE IN EURASIA:

3

Central Asia
Russia
Ukraine

SERVING ON THE FIELD

55

Canada
Germany
Philippines
Switzerland
US

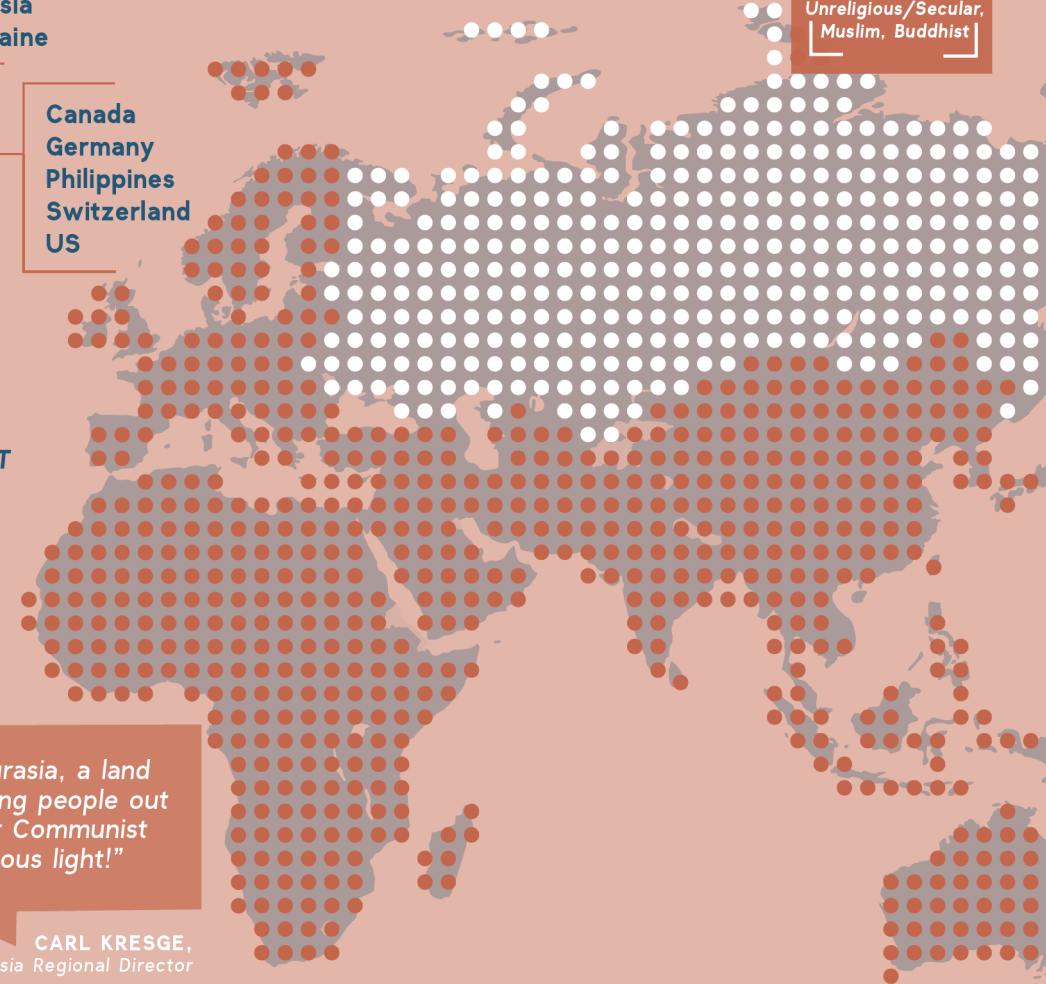
4

PREPARING TO GO

5

SENT FROM FIVE DIFFERENT COUNTRIES

RELIGIOUS GROUP FOCUS:
Tribal/Animist,
Unreligious/Secular,
Muslim, Buddhist



"We welcome you to Eurasia, a land where we see God bringing people out of the darkness of their Communist past and into his glorious light!"

CARL KRESGE,
Eurasia Regional Director

AFRICA

A GOSPEL
VOICE IN
PUBLIC SCHOOLS



What is one thing that the islands of the Philippines and the savannas of Africa have in common? Biblical values teaching in schools! Across the Philippines, Uganda, and now Tanzania, communities are welcoming these classes.

Values Orientation In Classroom Education (VOICE) is a curriculum-based program that strategically reaches thousands of public school students each year. The program lessons are values-focused (honesty, respect, self-discipline, responsibility, humility, etc.), utilizing scripture in each lesson and presenting the gospel in each module.

The VOICE curriculum began in the Philippines, created by (now retired) SEND missionaries Ruth Haynes and Laura Bonney. Since 2005, VOICE has expanded to a harvest that no one could have anticipated. It is now taught in 79 out of 81 provinces of the Philippines, reached Uganda in 2013, and just launched in Tanzania and Kenya this past year. Furthermore, the program has expanded to reach adult audiences in prisons and government community programs, producing transformation in the hearts and lives of students across all age levels.

As the seeds of VOICE continue to be planted in new locations and through new channels—moving in hope toward Burundi, Rwanda, and Ethiopia—we anticipate the Lord of the harvest will produce new fruit even more abundantly than we can ask or imagine.

THE FUTURE OF SEND

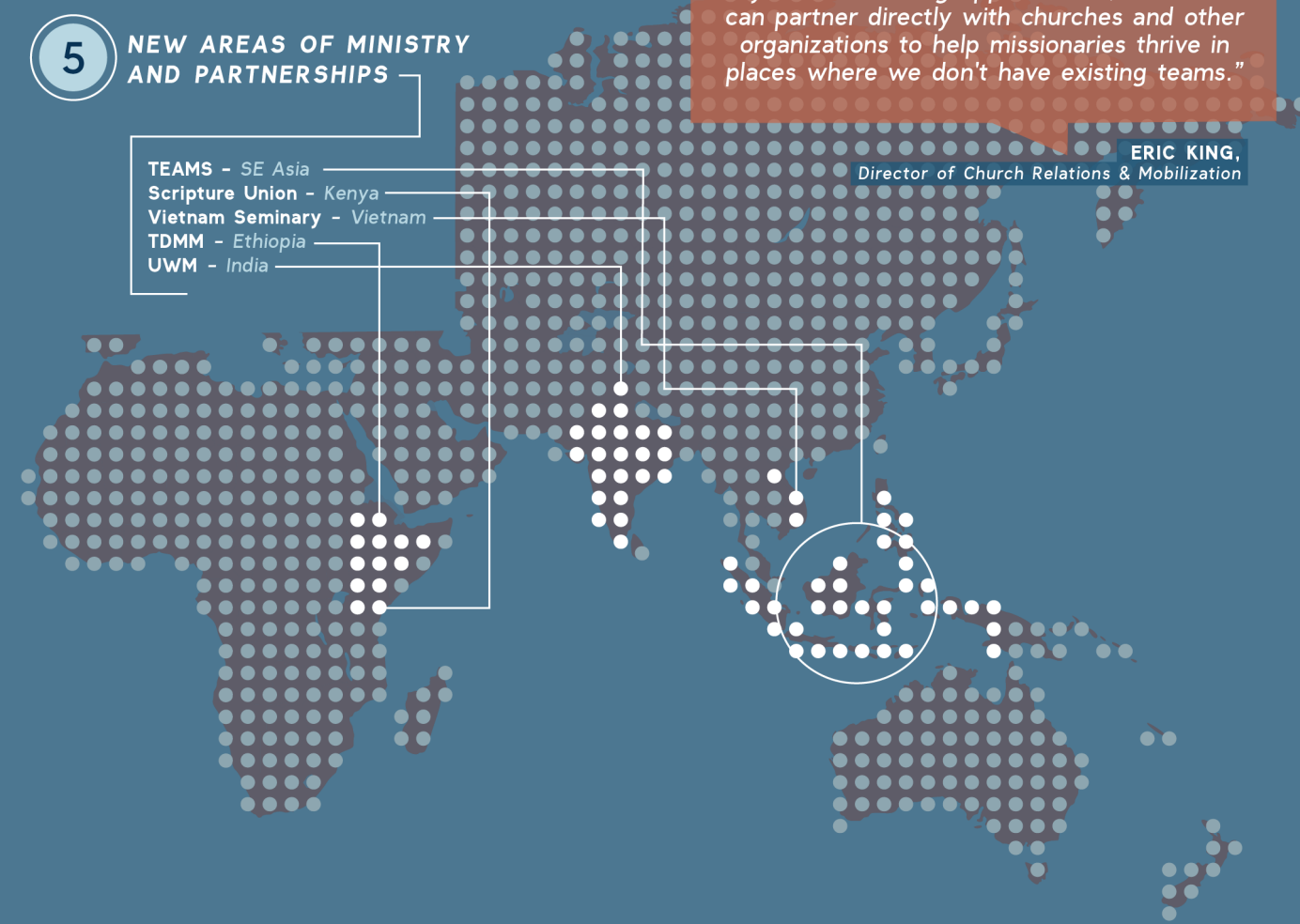
Not satisfied to rely only on traditional structures to reach the unreached, SEND can now partner with churches to send their missionaries to places where we don't have existing teams.

"Following God's leading to the mission field shouldn't be overly complicated and time-consuming. With a desire to grow even beyond our existing opportunities, SEND now can partner directly with churches and other organizations to help missionaries thrive in places where we don't have existing teams."

5 NEW AREAS OF MINISTRY AND PARTNERSHIPS

- TEAMS - SE Asia
- Scripture Union - Kenya
- Vietnam Seminary - Vietnam
- TDMM - Ethiopia
- UWM - India

ERIC KING,
Director of Church Relations & Mobilization



US OFFICE FINANCIAL REPORT



2018

TOTAL INCOME
\$18,820,000

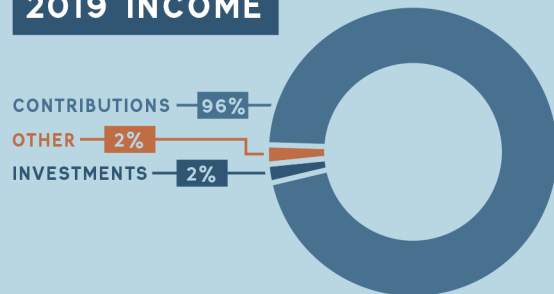
TOTAL EXPENSES
\$17,298,000

2019

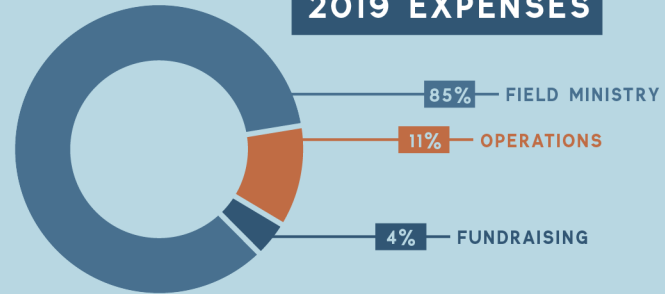
TOTAL INCOME
\$17,362,677

TOTAL EXPENSES
\$17,592,956
(Income from previous years was distributed during this fiscal year.)

2019 INCOME



2019 EXPENSES



SEND International of the United States, Inc., financial statements are audited by CapinCrouse LLP
SEND International is a member of the ECFA

SEND US COUNCIL



"The US Council of SEND International is focused on ensuring every action of SEND US is aimed at effective and efficient work towards furthering God's kingdom. God's harvest can be great if we can send the people who are called to the fields to plant the seeds and work towards that harvest. As a member of this group of leaders, I am excited to play a part in the Great Commission."



MICHELLE ATWELL

US Director & CEO,
SEND International



JOHN BAIRD

Retired Human Resources Director,
Ford Motor Company



DR. SABRINA BLACK

Clinical Director, Abundant
Life Counseling Center



DAVID GREGORY

Vice President of Strategic
Development, Newport One



REV. WARREN JANZEN

International Director,
SEND International



ISABEL LEE

Global Outreach & Women's
Ministries, Chinese Bible
Church of Maryland



DR. ERIC MOORE

Pastor, Tree of Life Fellowship;
Assistant Professor, Moody
Theological Seminary



R. YORK MOORE

National Evangelist, InterVarsity
Christian Fellowship USA



DAN SEVERN

Vice President of Operations,
Furmano Foods



NEW 2019 US OFFICE STAFF



ZSOFIE HELD

Development Associate



ERIC KING

Director of Church Relations
& Mobilization



JEFF KRIMMEL

Director of Stewardship



MATT ROSSMAN

Mission Coach



EMILY QUINT

Mobilization Support Associate

THANK YOU



"I THANK MY GOD IN ALL MY REMEMBRANCE OF YOU...BECAUSE OF YOUR PARTNERSHIP IN THE GOSPEL FROM THE FIRST DAY UNTIL NOW."

PHILIPPIANS 1:3,5 (ESV)

Onuma first heard about the gospel through the ministry of the 180 Degrees student center in Maha Sarakham in Northeast Thailand. After attending an English club, Onuma started her journey toward belief in Christ alongside Arnie Suyu, a SEND missionary from the Philippines.

"The staff at the 180 Degrees student center asked about the purpose of life, and I couldn't answer! They introduced the story of Jesus, and I didn't just listen. I began studying the Bible as well with Arnie Suyu. She asked me if I believed, but I answered that I was afraid of how my family and friends would think about me if I believed in Jesus. Arnie said, 'Don't be afraid.' I asked my family for permission to get baptized, and they said, 'Do whatever you want!' I got baptized on August 5. I can say that my life changed a lot. It used to be hard to forgive someone, but now I know that God forgave my sin, so I can forgive other people. Also, after my baptism, I have a new family. My family in Christ is very important to my life!"



ARNIE,
SEND missionary

ONUMA,
Isaan believer

CONNECT
WITH
SEND

-  SENDInternational
-  send_missions
-  SENDintl
-  send.org/blog
-  Global Missions Podcast
-  info@send.org
-  248.477.4210

