

Dacre Braithwaite CE (VA) Primary School



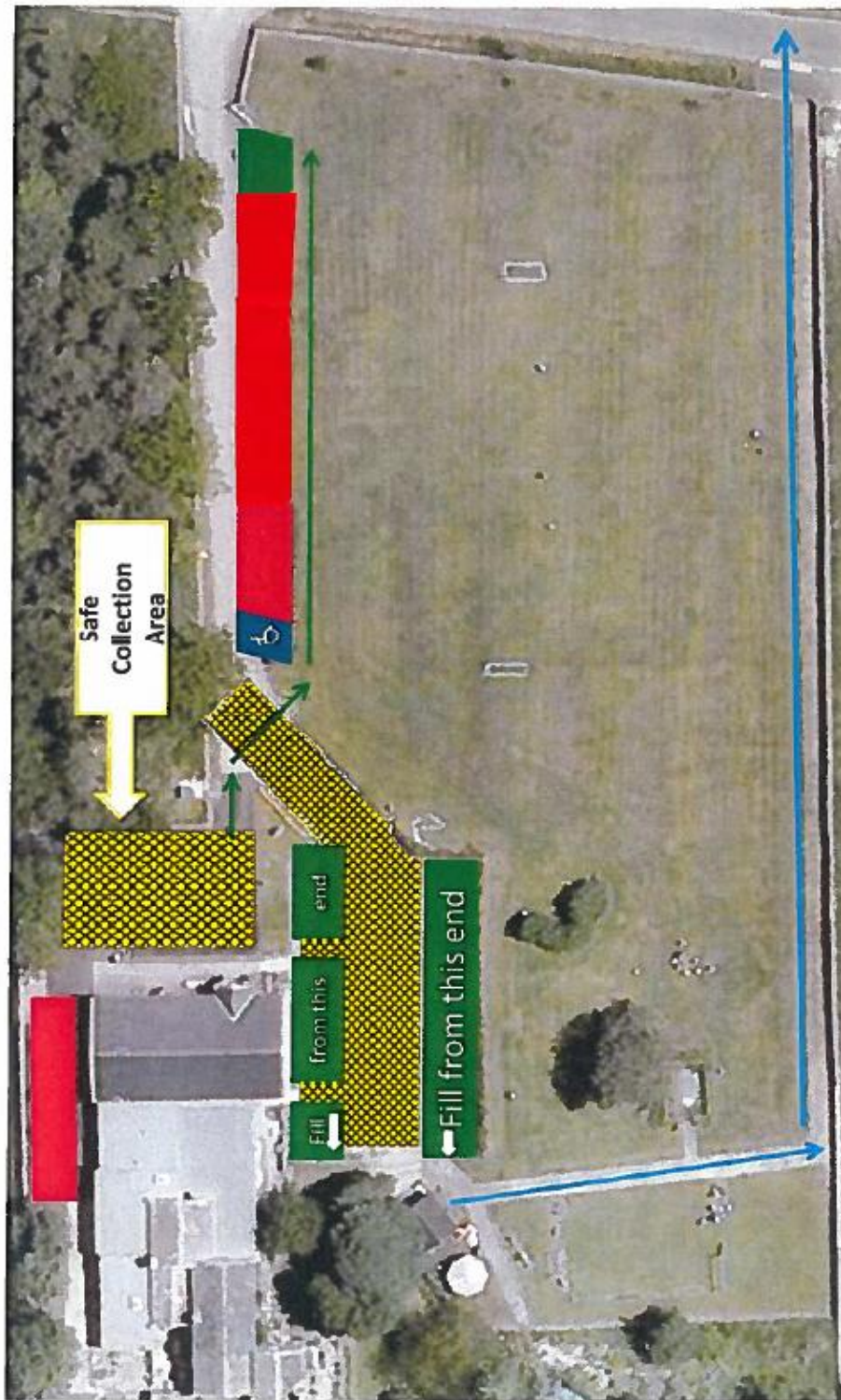
Car Parking Policy

These car parking rules and guidelines will be distributed to all parents and carers at the start of each academic year. They will also be given to parents and carers of all new starters throughout the year. A plan is attached showing the designated areas.







- This policy is part of the risk assessment for the safety of everyone entering or leaving the school site
- The Governors regard the safety of the children as a paramount when they are on the school site
- Parents and carers are responsible for their children in the car park and they should be supervised at **all** times. Parents must escort their children from their cars to the bottom of the steps.
- **A 5MPH SPEED LIMIT APPLIES THROUGHOUT THE SITE**
- All drivers must exercise due care and attention when manoeuvring in the car park. If there is any doubt, please do not hesitate to ask for assistance when manoeuvring
- Following any incident in the car park, Governors will review the situation with a view to taking appropriate action which could ultimately be the withdrawal of the right to park on the school site for the individual(s) concerned
- The Governors encourage parents and carers to consider the health benefits to their children when they walk to school
- Parents and carers must make the safety of their own and other children their first priority when using the car park
- Parents and carers must only park in designated areas (see plan). Ad hoc coned areas should be treated in a like manner
- There is to be no parking on designated walkways and safe areas
- The school gates will be closed during the school day from 09:15 – 15:00. The first person to arrive at 15:00 onwards is permitted to open the school gate
- Access for emergency vehicles must be maintained at all times
- Parents and carers arriving later than 15:15 must drive with extreme caution in the school grounds, if there is no room left in the car park, parents must leave their car on the road outside school
- Users of the school car park do so at their own risk. Dacre Braithwaite CE Primary School will not accept responsibility for damage, accident or loss to vehicles or contents

Guidelines drawn up by Governors for safe use of car park

- The most efficient use of the car park is to fill up from the Class 1 Cabin (both sides of the car park) to the playing field. Ideally reversing into the space so you can drive out forwards, thus reducing your blind spots when children are in the car park
- The area at the rear of the school and the first driveway spaces are for staff parking only. Parents are not permitted to park in the Staff Car Park or access the house behind school. The top playground is classified as a safe area for the children. It is out of bounds to vehicles belonging to parents and carers. Therefore, there are to be no moving vehicles in this area when children are being delivered or collected from school/ Parents and carers should collect children from the top playground area. Parents and carers should stand on the playground, leaving the slope free for access.
- Small children are very hard to see when manoeuvring - please minimise the time children are in the car park. If you wish to have discussions, please do this in the top playground.
- Children should be placed securely in vehicles so parents and carers can leave promptly and safely
- Please give consideration for other users of the car park.



Key

-  No Parking
-  Staff Parking
-  Disabled Parking
-  Parent/Carer Parking
-  Footpath to highway
-  Footpath to driveway spaces (once Little Red Bus has departed)

Policy	Date of Approval	Date of renewal
Car Parking	March 2026	March 2029