



## Museum Opening Times

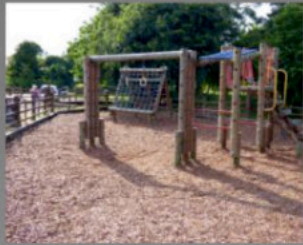
11am-4pm  
Easter - October  
Saturday, Sunday & Bank Holiday Mondays  
Tuesday-Sunday at Easter, Whitsun and  
Summer School Holidays.

Grounds open to the public throughout the year, dawn to dusk

# Waltham Windmill

# Museum Of Rural Life

### On the same site



Working windmill

Selection of shops

Miniature railway

**FREE CAR PARKING**

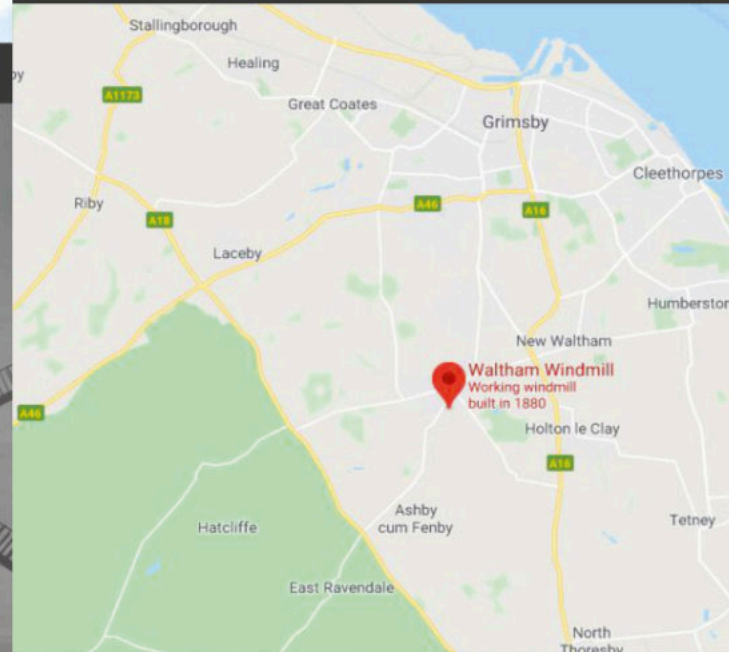
Children's play area

Picnic area

Cycle stand

Free toilets

Variety of refreshments  
available



### Where we are

**Waltham Windmill Trust**  
**Waltham Windmill Museum of Rural Life**

Waltham Windmill Centre  
Brigsley Road  
Waltham  
Grimsby  
North East Lincolnshire  
DN37 0JX

Phone: 07747 597438

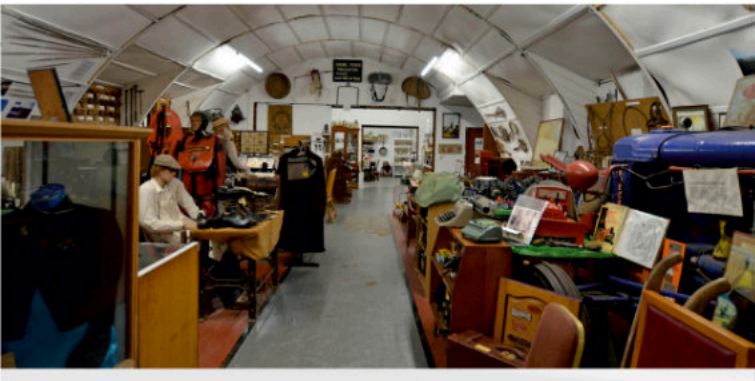


Find us on facebook

E-mail: [walthammuseum2017@gmail.com](mailto:walthammuseum2017@gmail.com)



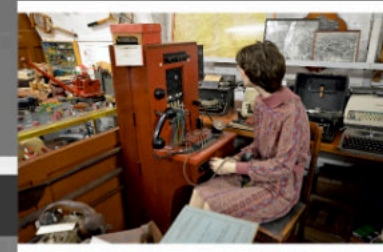
# Waltham Windmill Museum Of Rural Life



You will also find many items from the two world wars of the 20th century. On display are uniforms, equipment, parts of crashed aircraft, wartime documents and photographs. Recent additions include an air-to-air missile and an ejector seat which our younger visitors can be strapped into, whilst wearing a pilot's hat.

Another display tells the story of office life: there is the old switchboard, early typewriters, a small desktop printer, pens and rubber stamps.

The display includes items from the Grimsby Telephone Museum.



## What else is in the museum?

Waltham Windmill Museum of Rural Life is situated at the Waltham Windmill Centre in the village of Waltham. It opened in 1988 and is housed in a WW1 Nissen hut next to the windmill. This hut was the WRAF's mess during the war, part of RAF Grimsby at that time.

The museum also covers a number of areas telling the story of local rural and domestic life of the past. You can find items linked to farming, rural trades and crafts of a century ago. On display is an early post war Fordson tractor whilst on the other side are tools used by the Gamekeeper, Blacksmith, Harness maker, Wheelwright, Farrier, Clog maker and veterinarians.

Further down the museum is a display of a kitchen and laundry from the turn of the century. The range and oven dominate the room, whilst in the kitchen, the cabinet contains examples of packeted food and bottles of camp coffee. The laundry has a full range of washing equipment including a stone sink, a copper, dolly tube mangles and bars of soap.



## RAF Grimsby Exhibition

During WW11 the local airfield, known as RAF Grimsby, was the base for 142,100 and 550 heavy bomber squadrons. This exhibition may be of particular interest for our older visitors who remember WW11, possibly in the RAF themselves, as it contains a lot of memorabilia of these squadrons. There is other memorabilia from WW11 including gas masks, a local siren, ration books and Christmas cards from Adolf Hitler and Grossadmiral Donitz and a section devoted to the army.



Surely our Grandparents would have felt at home in the next room, a parlour from the 1920's and 1930's. Here we find a piano, a coal fire, a wind-up gramophone, whilst on the walls are some family portraits and on the table, a family Bible and an old photo album.

