



GENERAL MEETING

JULY 28, 2025





AGENDA

- OPENING MESSAGE - DEI
- SECRETARY'S REPORT - LENEHAN
- FINANCES – TRACH
- FHSAA LEADERSHIP CONF. - NORTHERN
- ASSIGNOR – McCLANE
- JLA BADGING – HOLMES / DEI
- TRAINING - DEI
- NEXT MEETING

OPENING MESSAGE

OPENING MESSAGE

STATE EXAM

- OPENS JULY 28
- CLOSES AUGUST 26 AT 11:59 P.M.
- MUST TAKE EXAM, IF NOT WILL NOT BE ASSIGNED GAMES
- ONLINE STUDY SESSIONS WILL BE SCHEDULED
- DO NOT WAIT UNTIL LAST MINUTE TO COMPLETE EXAM

SECRETARY REPORT

SECRETARY'S REPORT

MEETING ATTENDANCE

- MUST ATTEND FIVE (5) MEETINGS TO BE ON CREW
- 5 MEETINGS IS REQUIRED FOR 2026 VARSITY CREWS
- **YOU ARE RESPONSIBLE FOR SIGNING YOURSELF IN**

FHSAA REGISTRATION

- FHSAA REGISTRATION IS NOW OPEN

IF NEW OR TRANSFER OFFICIAL

- MUST BE SETUP IN ARBITER
- REGISTER WITH FHSAA FIRST, THEN ECOFA

FINANCIAL REPORT

TREASURER REPORT JULY 28TH

FINANCIAL STATEMENT

TRUIST BALANCE AS OF TODAY: \$14,513.63

BALANCE OF ALL ACCOUNTS: \$14,513.63

2025 DUES

- TACKLE ONLY - \$40.00
- TACKLE & FLAG - \$50.00
- FLAG ONLY - \$20.00
- *** TACKLE AND FLAG DISCOUNT IF PAID WHEN REGISTERING FOR TACKLE**

FHSAA LEADERSHIP CONFERENCE

FHSAA LEADERSHIP CONFERENCE

- FHSAA LOGO CHANGE
- ADDITIONAL TRAINING RESOURCES
 - [FHSAA TRAINING RESOURCES](#)

ASSIGNOR

ARBITER


- ALL GAMES FOR ECFOA WILL BE ASSIGNED THROUGH ARBITER BY BOB MCLANE
- IF YOU KNOW OF DATES NOT AVAILABLE, PLEASE BLOCK YOURSELF OUT
- INSTALL ARBITER APP ON YOUR SMARTPHONE
- **NOTE: ECFOA DOES NOT ASSIGN YOUTH LEAGUE FOOTBALL**

JESSICA LUNSFORD BADGING

JESSICA LUNSFORD BADGING

1. Complete Google Form via link send to email from ECFOA
President Subject: Jessica Lunsford Badging
2. School District will review and reply with directions to obtain badge
3. Locations to get fingerprints completed, cost and methods of payments have not been announced

JESSICA LUNSFORD BADGING



School District Vendor/Contractor Intake

If you are seeking to get cleared as a vendor/contractor to work in the School District of Palm Beach County, please complete the following information and a team member from HR Operations will follow up with you within 2 business days.

The name, email, and photo associated with your Google account will be recorded when you upload files and submit this form

[Next](#) [Clear form](#)

Never submit passwords through Google Forms.

This form was created inside of School District of Palm Beach County. [Contact form owner](#)

Does this form look suspicious?

Google Forms

Link in email from ECFOA President will take you to Google Form

JESSICA LUNSFORD BADGING



School District Vendor/Contractor Intake

If you are seeking to get cleared as a vendor/contractor to work in the School District of Palm Beach County, please complete the following information and a team member from HR Operations will follow up with you within 2 business days.



The name, email, and photo associated with your Google account will be recorded when you upload files and submit this form

Next

Clear form

Never submit passwords through Google Forms.

This form was created inside of School District of Palm Beach County. - [Contact form owner](#)


Does this form look suspicious? [Report](#)

Google Forms

Click Next to begin process

JESSICA LUNSFORD BADGING

School District Vendor/Contractor Intake

 Draft saved

The name, email, and photo associated with your Google account will be recorded when you upload files and submit this form

* Indicates required question

Your Contact Information

First Name *

Joe

Last Name *

Official

Your phone number.

5612223333

Your email address. *

joeofficial@gmail.com

Are you one of the following?

- ☐ Vendor that has been awarded on a Bid
- ☐ Registered Behavior Technician (RBT) or Private Practitioner
- ☐ Consultant
- ☐ Leasing rooms/buildings
- ☒ None of these

Clear selection

Back Next Clear form

Click Next to
continue

JESSICA LUNSFORD BADGING

School District Vendor/Contractor Intake



The name, email, and photo associated with your Google account will be recorded when you upload files and submit this form

* Indicates required question

Work and Company Info

What type of work or service will you be providing? *

Sports Officiating

What is the name of the company or organization you work for? (This is not the School District) *

East Coast Football Officials Association

Provide your supervisor's name or company point of contact *

Jeff Geller

Provide your supervisor's or company point of contact phone number *

5616322988

Provide your supervisor's email:

ecfoapresident2025@gmail.com

Click Next to
continue

Back

Next

Clear form

Never submit passwords through Google Forms.

This form was created inside of School District of Palm Beach County. - [Contact form owner](#)


Does this form look suspicious? [Report](#)

Google Forms

JESSICA LUNSFORD BADGING

School District Vendor/Contractor Intake



 Draft saved

The name, email, and photo associated with your Google account will be recorded when you upload files and submit this form

* Indicates required question

School District Contact

What school or department will you be providing work/services to? *

High School Athletics

What is the name of the contact person at our School District that you have been working with? *

Kelli Erianne

Back

Submit

Clear form

Never submit passwords through Google Forms.

This form was created inside of School District of Palm Beach County. - [Contact form owner](#)

Click Submit

RULE 4

**BALL IN PLAY, DEAD BALL AND
OUT OF BOUNDS**



PUTTING THE BALL IN PLAY

- A KICKOFF (FREE KICK) WILL BE USED TO PUT THE BALL IN PLAY...TO START EACH HALF AND TO RESUME PLAY AFTER A FIELD GOAL OR AFTER A TRY
- A FREE KICK SHALL ALSO PUT THE BALL IN PLAY:
 - AFTER A SAFETY
 - IF A FREE KICK DOWN IS REPLAYED
 - WHEN A FREE KICK IS CHOSEN FOLLOWING A FAIR CATCH OR AN AWARDED FAIR CATCH ...OR THE REPLAY OF A DOWN WHICH FOLLOWS SAID FAIR CATCH / AWARDED FAIR CATCH
- A SNAP SHALL PUT THE BALL IN PLAY WHEN A FREE KICK IS NOT SPECIFIED
- SNAPS AND FREE KICKS SHALL BE MADE BETWEEN THE HASH MARKS
- AFTER BEING PUT IN PLAY — THE BALL REMAINS LIVE UNTIL THE DOWN ENDS

DEAD BALL AND THE END OF THE DOWN

- A GAME OFFICIAL SHALL BLOW THE WHISTLE WHEN A FOUL OCCURS BEFORE A SNAP OR FREE KICK. THIS LETS EVERYONE KNOW —THE BALL IS STILL DEAD
- THE BALL BECOMES DEAD AND THE DOWN IS ENDED WHEN:
 - RUNNER GOES OUT OF BOUNDS
 - FORWARD PROGRESS IS STOPPED
 - WHEN A LIVE BALL GOES OUT OF BOUNDS
 - WHEN A FORWARD PASS (LEGAL OR ILLEGAL) IS INCOMPLETE OR SIMULTANEOUSLY CAUGHT BY OPPOSING PLAYERS.
 - WHEN A LEGAL FREE OR SCRIMMAGE KICK ...BREAKS THE PLANE OF R'S GOAL LINE (THAT IS NOT A SCORING ATTEMPT)
 - ANY LOOSE BALL IS SIMULTANEOUSLY CAUGHT OR POSSESSED BY OPPOSING PLAYERS

DEAD BALL AND THE END OF THE DOWN

- THE BALL BECOMES DEAD AND THE DOWN IS ENDED WHEN:
 - BALL IS ON THE GROUND MOTIONLESS...AND NO PLAYER ATTEMPTS TO POSSESS IT
 - AFTER A VALID OR INVALID FAIR CATCH SIGNAL BY ANY R PLAYER ON A SCRIMAGE OR FREE KICK
 - WHEN A SCORE OCCURS
 - DURING A TRY — IF B SECURES POSSESSION OR AS SOON AS IT IS APPARENT THAT A KICK HAS FAILED TO SCORE
 - IF AN OFFICIAL HAS AN INADVERTENT WHISTLE
 - WHEN THE HELMET COMES COMPLETELY OFF THE RUNNER

DEAD BALL AND THE END OF THE DOWN

- PAT /TRY



- TRY WAS BLOCKED AND R RECOVERS. CAN THEY ADVANCE THE BALL?
- NO – THE PLAY IS DEAD AS SOON AS R GAINS POSSESSION OR IT IS APPARENT THE KICK WILL NOT SCORE. RULE 8-3-2A & B
- CREW DOES A GREAT JOB HANDLING THIS SITUATION BY GETTING THE PLAY SHUT DOWN QUICKLY

DEAD BALL AND THE END OF THE DOWN

- HELMET COMES COMPLETELY OFF THE RUNNER



- WHAT'S THE CALL? DOES THE PLAY CONTINUE OR IS PLAY STOPPED?
- AS SOON AS THE RUNNER LOSES HIS HELMET THE PLAY IS DEAD. CREW DOES A GREAT JOB GETTING THE PLAY SHUT DOWN QUICKLY TO AVOID ANY FURTHER CONTACT ON THE RUNNER.

DEAD BALL AND THE END OF THE DOWN

- INADVERTENT WHISTLES – USUALLY THE RESULT OF HASTY JUDGEMENT...NO ONE WANTS TO HAVE ONE, BUT THE HARSH REALITY IS ALL OF US HAVE HAD ONE AT ONE TIME OR ANOTHER
- MAJOR CONTRIBUTORS
 - BLOWING THE WHISTLE WHEN YOU CANNOT SEE THE BALL OR KNOWING WHERE IT IS
 - OLD SAYING – “SEE THE PEBBLES ON THE PIGSKIN”
 - BLOWING THE WHISTLE BEFORE YOU ARE CERTAIN THE PLAYER HAS COMPLETE AND SECURE POSSESSION ON THE BALL
 - BLOWING THE WHISTLE BEFORE YOU ARE CERTAIN THE RUNNER IS DOWN BY RULE
 - NOT UNDERSTANDING DEAD-BALL RULES
 - NOT ALL BALLS THAT ENTER THE END ZONE ARE DEAD BY RULE

DEAD BALL AND THE END OF THE DOWN

- HOW TO AVOID
 - DON'T HURRY
 - STICK TO YOUR ASSIGNED COVERAGE AREA AND DON'T BLOW A WHISTLE ON A PLAY YOU ARE NOT RESPONSIBLE
 - IT'S ACCEPTABLE IF WHISTLE IS LATE
 - REMEMBER — IT'S THE ACTION OF THE PLAY THAT MAKES THE PLAY DEAD, NOT THE WHISTLE
 - KEEP THE WHISTLE OUT OF YOUR MOUTH WHILE THE PLAY IS LIVE
 - NECESSARY FOR BASKETBALL OFFICIALS; PROBLEMATIC FOR FOOTBALL OFFICIALS
 - WINGS SHOULD ONLY BLOW THE WHISTLE WHEN THE PLAY ENDS IN THEIR SIDE ZONE
 - UMPIRES RARELY NEED TO BLOW THEIR WHISTLE EVEN IF THE PLAY ENDS AT THEIR FEET
 - WINGS HAVE THE BEST VIEW OF FORWARD PROGRESS

DEAD BALL AND THE END OF THE DOWN

- WHAT HAPPENS WHEN THERE IS AN INADVERTENT WHISTLE?
 - IW —ENDS THE DOWN
 - DOWN WILL BE REPLAYED IF — DURING A LEGAL FORWARD PASS — SNAP IN FLIGHT OR DURING A LEGAL KICK
 - TEAM IN LAST POSSESSION MAY CHOOSE WHERE POSSESSION WAS LOST OR REPLAY THE DOWN
 - TEAM IN POSSESSION MAY CHOOSE TO ACCEPT RESULTS OF THE PLAY AT THE DEAD BALL SPOT OR REPLAY
 - IF A PENALTY OCCURS BEFORE THE IW ... IF THE PENALTY IS ACCEPTED —THE IW IS IGNORED
- **FINAL THOUGHT - IF YOU HAVE ONE — OWN IT!**

DEAD BALL AT THE END OF THE DOWN INADVERTENT WHISTLE VIDEO WITH SOUND



- HOW DO WE ADMINISTER THIS INADVERTENT WHISTLE? WAS THERE POSSESSION?
- NO POSSESSION BY R – DOWN MUST BE REPLAYED

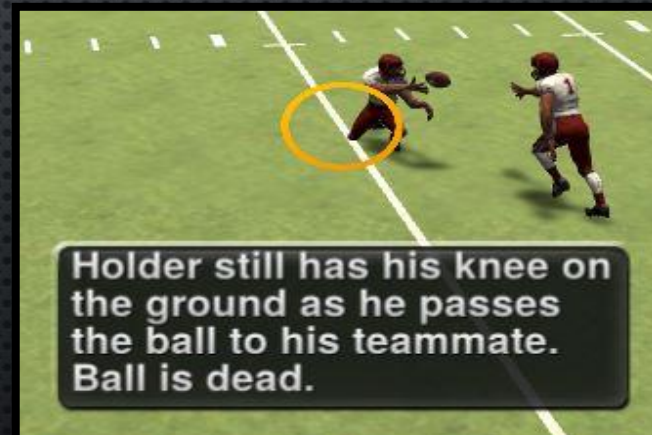
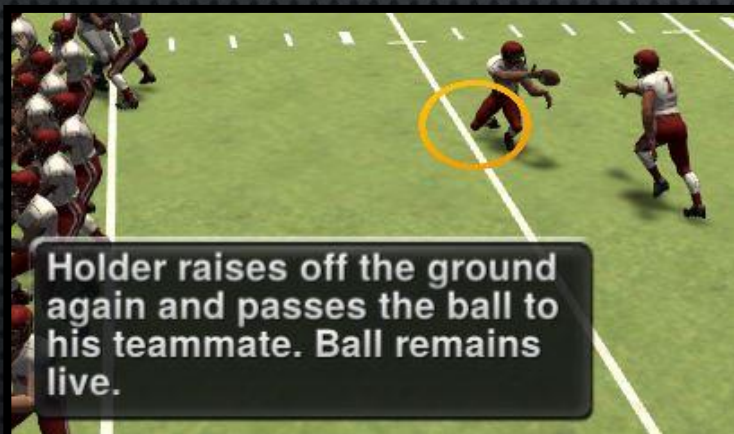
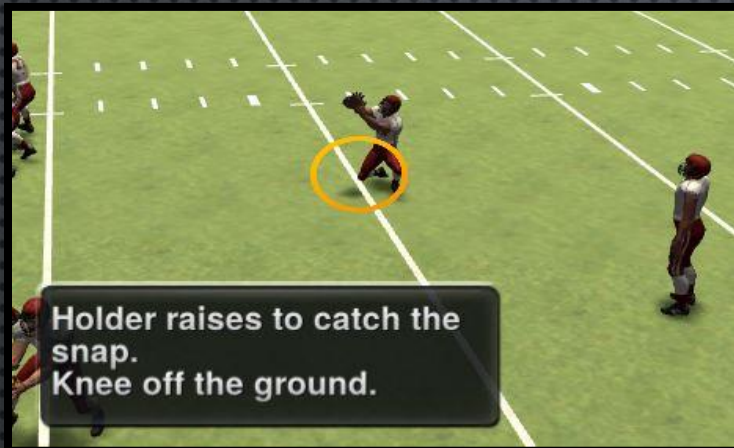
OUT OF BOUNDS AND INBOUNDS SPOTS

- WHEN A LOOSE BALL GOES OUT OF BOUNDS, THE OUT OF BOUNDS SPOT IS FIXED BY THE YARD LINE WHERE THE FOREMOST POINT OF THE BALL CROSSED THE SIDELINE
- WHEN THE OUT OF BOUNDS SPOT IS BETWEEN THE GOAL LINES – THE BALL SHALL BE PUT IN PLAY AT THE NEAREST INBOUNDS SPOT (HASH MARK) ... UNLESS A FORWARD PASS IS INVOLVED
- IF THE OUT OF BOUNDS SPOT IS BEHIND THE GOAL LINE – IT IS A SAFETY, FIELD GOAL OR TOUCHBACK
- IF THE BALL TOUCHES A PYLON – IT IS OUT OF BOUNDS BEHIND THE GOAL LINE
- WHEN THE BALL BECOMES DEAD BETWEEN THE HASH MARKS –PLAY IS RESUMED AT THE DEAD BALL SPOT, UNLESS A LEGAL FORWARD PASS INCOMPLETION .. THE BALL IS RETURNED TO THE PREVIOUS SPOT

OUT OF BOUNDS AND INBOUNDS SPOTS

- BEFORE THE READY FOR PLAY, TEAM A MAY DESIGNATE WHERE THEY WANT THE BALL TO BE SPOTTED — BETWEEN THE HASH MARKS :
 - FOR A TRY
 - FOR A KICK OFF
 - FOLLOWING A SAFETY
 - FOLLOWING A FAIR CATCH OR AN AWARDED F/C
 - FOLLOWING A TOUCHBACK
 - FOR THE START OF EACH SERIES USING AN OVERTIME PROCEDURE
- THE TEAM THAT HAD THE OPTION TO DESIGNATE WHERE TO SPOT THE BALL.... HAS THE SAME PRIVILEGE IF THE DOWN IS TO BE REPLAYED OR A DEAD BALL FOUL OCCURS

DEAD BALL EXCEPTION - ILLUSTRATION



DEAD BALL EXCEPTION - VIDEO



- GREAT CALL BY OUR NORTH STATE CREW IN THE 2021 4AA STATE CHAMPIONSHIP GAME! THEY BLOW THE PLAY DEAD WHEN THE HOLDER PITCHES THE BALL WITH HIS KNEE ON THE GROUND. THE GAME ANNOUNCERS DIDN'T HAVE A CLUE WHAT WAS GOING.

DEAD BALL EXCEPTION

- BIG NOTE — THE BALL BECOMES DEAD IF THE PLACE KICK HOLDER MUFFS THE SNAP OR FUMBLES AND RECOVERS AFTER HIS KNEES HAVE BEEN OFF THE GROUND, AND HE THEN TOUCHES THE GROUND WITH ANYTHING —OTHER THAN HAND OR FOOT -- WHILE IN POSSESSION OF THE BALL
- ALSO — IF THE PLACE KICK HOLDER —WITH A KNEE(S) ON THE GROUND CATCHES THE SNAP AND PITCHES/PASSES THE BALL FROM THAT POSITION... THE BALL IS DEAD

DEAD BALL EXCEPTION - ILLUSTRATION



QUESTION #1

- FOURTH AND 3 FOR TEAM K FROM TEAM R'S 24-YARD LINE. HOLDER K1, ON ONE KNEE, TAKES THE SNAP AND SETS THE BALL. KICKER K2 RUNS UP AS IF TO KICK, BUT BENDS DOWN, SCOOPS UP THE BALL AND ADVANCES TO TEAM R'S 15-YARD LINE WHERE HE IS DOWNED. AFTER K2 GRABBED THE BALL, K1 ROSE OFF HIS KNEE AND BLOCKED FOR K2.
 - A. THE BALL IS DEAD WHEN K2 GRABS IT
 - B. THE BALL IS DEAD WHEN K1 RISES OFF HIS KNEE
 - C. LEGAL PLAY — 1ST DOWN FOR TEAM K
- C — LEGAL PLAY — 4-2-2A

QUESTION #2

- K1's UNTOUCHED FREE KICK GOES OUT OF BOUNDS. TEAM R CHOOSES TO TAKE THE BALL AT THE OUT-OF-BOUNDS SPOT AND REQUESTS THAT THE BALL BE SPOTTED IN THE MIDDLE OF THE FIELD.
 - A. THE REQUEST IS GRANTED
 - B. THE REQUEST IS DENIED
- B — REQUEST DENIED — 4-3-1

NEXT MEETING

- **AUGUST 4TH**
 - **NEW & TRANSFER OFFICIALS**
 - **6:30 P.M.**
 - **JOHN I. LEONARD H.S.**
- **AUGUST 8TH**
 - **FIELD CLINIC – NEW & TRANSFER OFFICIALS**
 - **6:00 P.M.**
 - **PALM BEACH CENTRAL H.S**
- **AUGUST 11TH**
 - **ALL**
 - **6:30 P.M**
 - **JOHN I. LEONARD H.S.**
 - **PURCHASE OFFICIALS WILL BE AT MEETING TO ACQUIRE GEAR**

THANK YOU – QUESTIONS?

