

# Aspull Church Primary School

## Prevent Risk Assessment – February 2026

School Vision:

**We shine like stars to achieve and make a difference in the world, knowing that with God all things are possible.**

---

### 1. Purpose of the Risk Assessment

This Prevent Risk Assessment has been completed to ensure the school meets its duties under Section 26 of the Counter-Terrorism and Security Act 2015. The aim is to identify, assess, and mitigate any potential risks of radicalisation and extremism, while safeguarding pupils and promoting fundamental British values.

This assessment should be read alongside the school's Safeguarding Policy, Child Protection Policy, Behaviour Policy, Online Safety Policy, and Staff Code of Conduct.

---

### 2. Context and School Profile

- The school is a **primary school** educating pupils aged 4 to 11.
- Pupils come from a range of social, cultural, and religious backgrounds.
- The school is located in an area with **low** identified risk of radicalisation.
- There have been **no** known incidents relating to extremism or radicalisation within the school or local community.

The school recognises that children of any background can be vulnerable to extremist influences and that safeguarding is paramount.

---

### 3. Risk Assessment Table

Risk Area	Potential Risk	Existing Controls	Risk Level	Further Actions Required
<b>Leadership &amp; Governance</b>	Lack of awareness of Prevent duty	Senior leaders and governors receive safeguarding and Prevent training	Low	Annual refresher training
<b>Staff Knowledge &amp; Training</b>	Staff unable to identify early signs of radicalisation	All staff receive Prevent training as part of safeguarding	Low	Update training for new staff
<b>Curriculum</b>	Pupils not taught British values	British values embedded through PSHE, assemblies, RE & Worship	Low	Review curriculum annually
<b>Safeguarding Systems</b>	Concerns not reported appropriately	Clear reporting procedures and DSL in place	Low	Regular policy reminders
<b>Online Safety</b>	Exposure to extremist content online	Filtering, monitoring, and e-safety education	Medium	Review filtering annually
<b>Visitors &amp; External Speakers</b>	Extremist views shared by visitors	Vetting procedures and supervision	Low	Maintain visitor records
<b>Community &amp; Parental Engagement</b>	Lack of understanding of Prevent	Information available via policies and website	Low	Share updates with parents

## 4. Staff Training and Awareness

- All staff, including support staff and governors, receive **Prevent awareness training**.
  - New staff receive Prevent training as part of induction.
  - Staff understand how to identify vulnerabilities such as isolation, emotional distress, or exposure to extremist narratives.
- 

## 5. Curriculum and Teaching Approach

The school actively promotes **fundamental British values**, including: - Democracy - Rule of law - Individual liberty - Mutual respect and tolerance

These are embedded through: - PSHE lessons - Assemblies - RE and wider curriculum - Classroom discussions appropriate to pupils' age and understanding

---

## 6. Safeguarding and Reporting Procedures

- The Designated Safeguarding Lead (DSL) is responsible for Prevent-related concerns.
  - All concerns are recorded and managed in line with safeguarding procedures.
  - Where appropriate, referrals may be made to the Local Authority or Channel programme.
- 

## 7. Online Safety

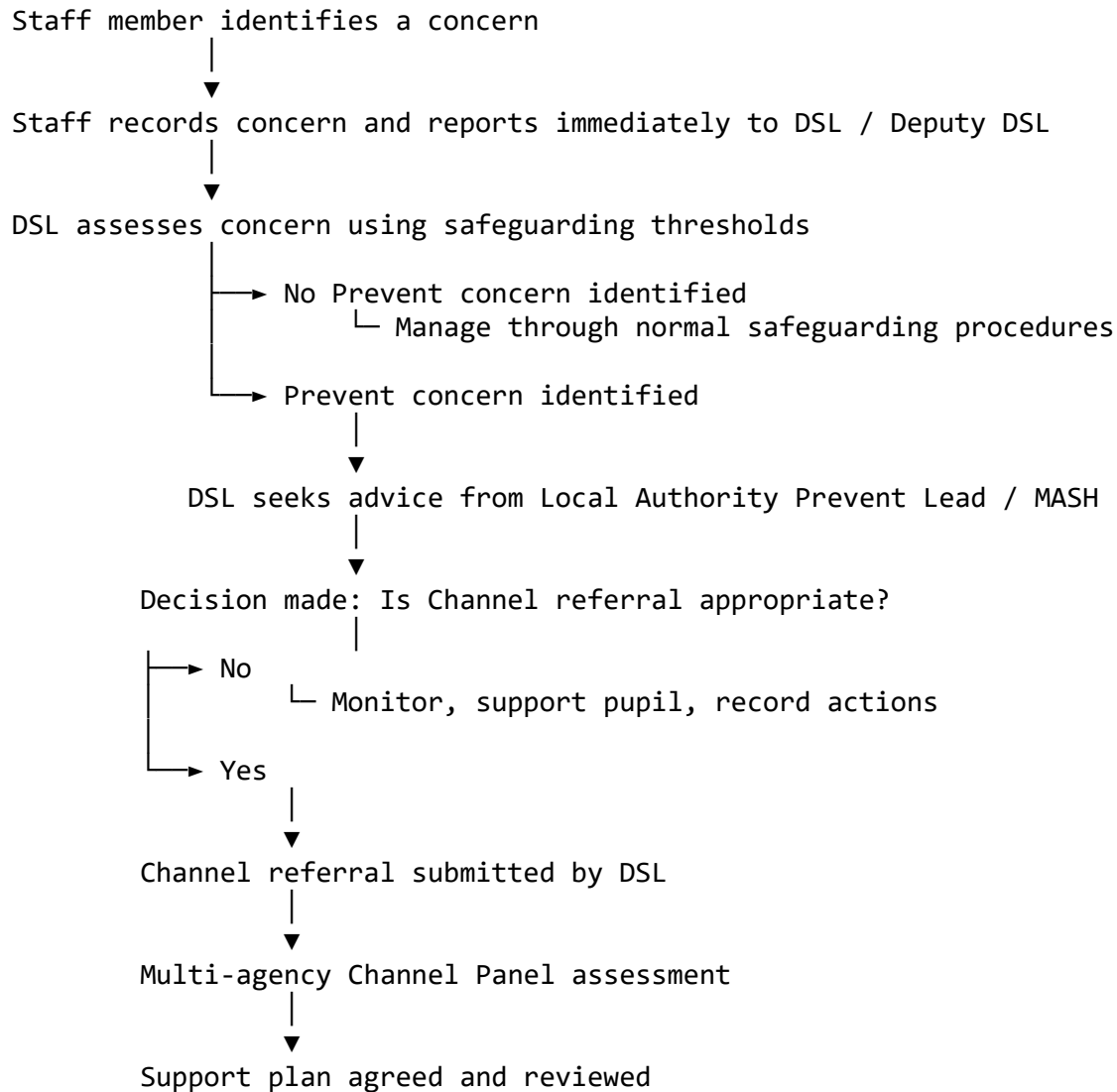
- The school uses age-appropriate filtering and monitoring systems.
  - Pupils are taught how to stay safe online and report concerns.
  - Staff supervise internet use and address any concerns immediately.
- 

## 8. Visitors and Use of School Premises

- All visitors are vetted and supervised.
  - External speakers are approved in advance.
  - School premises are not used by external groups without appropriate checks.
-

## 9. Channel Referral Process (Flowchart)

**All Prevent concerns must be treated as safeguarding concerns.** The following flowchart outlines the procedure staff should follow if they have a concern relating to radicalisation or extremism.



**Key principles:** - Staff must **not investigate concerns themselves**. - Concerns should be reported **immediately** to the DSL. - Parents/carers will be informed where appropriate and safe to do so. - All actions and decisions must be **recorded securely**.

---

## 10. Monitoring and Review

This risk assessment will be: - Reviewed annually - Updated following any incidents or changes in local risk - Monitored by senior leaders and governors

---

## 11. External Agencies and Useful Links (Prevent Duty – Schools)

### **Prevent Duty Guidance for Schools (GOV.UK)**

<https://www.gov.uk/government/publications/prevent-duty-guidance/prevent-duty-guidance-for-england-and-wales-accessible>

*Statutory guidance outlining schools' responsibilities under the Prevent Duty.*

### **Get help if you're worried about a child being radicalised (GOV.UK)**

<https://www.gov.uk/guidance/get-help-if-youre-worried-about-someone-being-radicalised>

*Guidance for concerns about pupils who may be vulnerable to radicalisation.*

### **Channel Programme – Early intervention support**

<https://www.gov.uk/government/publications/channel-guidance>

*Multi-agency support for individuals identified as vulnerable to radicalisation.*

### **Prevent Duty Training (Home Office – recommended for school staff)**

<https://www.support-people-susceptible-to-radicalisation.service.gov.uk/portal>

*Free Prevent and Channel awareness training for education professionals.*

### **Educate Against Hate**

<https://educateagainsthate.com/>

*DfE-supported resources for school leaders, teachers and parents on extremism, Prevent and British values.*

### **ACT Early – Counter Terrorism Policing**

<https://actearly.uk/>

*Advice and support for safeguarding concerns linked to extremism or radicalisation.*

### **UK Safer Internet Centre**

<https://www.saferinternet.org.uk/>

*Online safety guidance, including managing extremist content and risks online.*

### **Report Harmful Content Online**

<https://reportharmfulcontent.com/>

*Tool for reporting harmful or extremist online material.*

### **Internet Watch Foundation (IWF)**

<https://www.iwf.org.uk/>

*Reporting route for illegal online content involving children.*

**NSPCC**

<https://www.nspcc.org.uk/>

*Safeguarding advice and support for children, families and professionals.*

**Childline (support for pupils)**

<https://www.childline.org.uk/>

*Confidential support for children and young people.*

*These external agencies provide advice, training, reporting mechanisms and early intervention support to help the school meet its Prevent and safeguarding responsibilities.*

---

## 12. Conclusion

The school recognises its responsibility to protect pupils from the risk of radicalisation. Through strong safeguarding systems, staff training, and a positive, inclusive curriculum, the school is confident that risks are effectively managed.