



WARRNAMBOOL COLLEGE SPORTING PATHWAYS PROGRAM **2022** UNIFORM INFORMATION & PRICE LIST

UNIFORMS DESIGNED AND SUPPLIED BY INDIGO WOLF
www.indigowolf.com.au | sales@indigowolf.com.au | 1300 214 409





PLEASE READ ALL INFORMATION BELOW CAREFULLY

Unfortunately due to Covid restrictions we are unable to hold the normal try on sessions. We understand this is not ideal, and have tried to outline as many important things as possible. Any questions at all regarding the items or your order – please call 1300 214 409

NUMBER OF GARMENTS TO ORDER

The school strongly encourages you to order a minimum of:

- 1 x Dress Polo (to be worn to and from school and to formal events)
- 2 pairs of shorts
- 2 training tops (either of the available Training Polo or Pro Training Top are fine)
- ** Important to note, Pro Training Tops can only be worn for inside training (due to no collar)
- If you would like to order an **SPP jacket** it needs to be ordered in the first order (November 2021)

IMPORTANT NOTES

- Training tops – **Pro Top** can only be worn inside when participating in SPP activities (not as school uniform)
- **The Training Polo** can be worn inside/outside and as school uniform

TO ORDER

All Orders will be completed via the online store provided in our correspondence.

1. Visit the provided store link – <https://orders.indigowolf.com.au/wcspp>

** This can also be found on the school website: Curriculum/SPP/Uniform Orders.

2. Choose the items you require
3. Pay for them via credit card
4. Ordered items will be delivered directly to your house

PRE-ORDER DATE for Start of 2022 delivery.

OPEN – Oct 19th

CLOSE – Nov 19th

DELIVERY – Shipped out to homes no later than 20th Jan 2022 (hopefully earlier) **school starts Feb 2nd.

Please allow some days after 20th for parcels to arrive via Australia Post.

DELIVERY

Garments will be delivered directly to your home

They will not be collected from the school anymore.

PRE-ORDERS – Sent out by Jan 20th 2022, via AusPost.

All future orders after the start of term 1, will be shipped within 2 business days.

FREQUENTLY ASKED QUESTIONS

What if I miss the Pre-Ordering period?

Pre-orders are designed to guarantee you get the size you require. After the initial pre-order we will have stock on hand to purchase and will be monitoring stock levels. On occasions we may be out of stock in certain sizes if we have a run on a particular size for any reason.

How do I know what size to order?

Unfortunately, due to Covid 19, size samples are unavailable to try on.

Please read all information carefully and watch the youtube video on how to work out sizes from a size chart. Please take measurements from clothes you currently have, NOT from measuring your child.

RETURNS

Returns and swaps for sizes are available. Garments must not be worn, and have original packaging.

Please take the time to follow the size guides and videos to avoid returns as much as possible.

Please contact sales@indigowolf.com.au for all returns. You will be required to post back the garments.

2022

Warrnambool College

Sports Uniforms + Online Ordering



DRESS POLO

\$40



COMPULSORY ITEM

\$40.00

TRAINING POLO



COMPULSORY ITEM

PRO TRAINING TOP

\$45.00



COMPULSORY ITEM

\$99

SOFTSHELL JACKET



OPTIONAL ITEM

\$45.00

Mens/Unisex Shorts + Womens Shorts



COMPULSORY ITEM

\$65

TRACKPANTS



OPTIONAL ITEM

2022

Warrnambool College

Sports Uniforms + Online Ordering



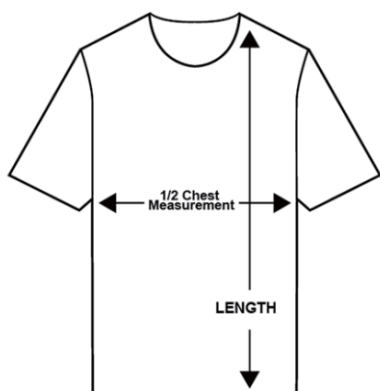
HOW TO WORK OUT SIZE FROM SIZE CHART

Unfortunately due to Covid19, you are unable to try on any sizes at the school. Please read below to help make an assessment of what sizes you may require. We understand this is not ideal, but we hope this will help as much as possible.

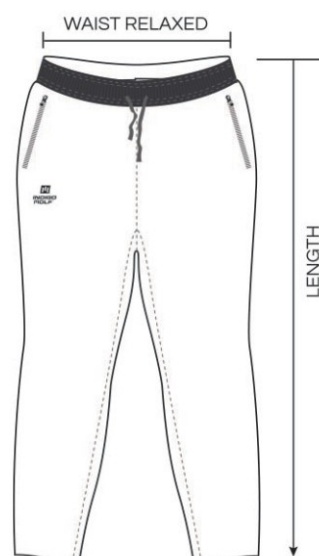
1. Find some garments you currently like wearing at home
2. Lay them flat on the ground
3. Use a measuring tape to measure some key parts of your garment to compare to the size charts provided.
4. Tops - 1/2 Chest and length are the most Important.
5. Compare measurements to size chart provided - they might not compare exactly, we would recommend going up a size if you are worried.

Video on how to work out sizes from a size chart
<https://www.youtube.com/watch?v=PzjrclXkNDg&t=2s>

HOW TO MEASURE



Lay garment flat and measure from under arm to underarm
this will give you the 1/2 chest measurement



2022

Warrnambool College

Sports Uniforms + Online Ordering



SIZE CHART

POLO SHIRT



T - SHIRT



POLOS + T-SHIRTS (Polo pattern code = SC030SSP | T-shirt pattern code = SC030SST)

SIZE	K2	K4	K6	K8	K10	K12	K14	XS	S	M	L	XL	2XL	3XL	4XL	5XL	6XL
New 1/2 Chest	31	34	37	40	43	45	47	49	51	54	57	60	63	66	70	74	78
Front Length (HSP)	40	45	50	54	58	63	67	69	71	73	75	76	78	80	82	83	85
BACK LENGTH (HSP)	41.5	46.5	51.5	55.5	59.5	64.5	68.5	70.5	72.5	74.5	76.5	77.5	79.5	81.5	83.5	85.5	87.5

MENS / UNISEX SHORTS



Part	6XS (6)	5XS (8)	4XS (10)	3XS (12)	2XS (14)	XS	S	M	L	XL	2XL	3XL	4XL
1/2 Pant open width	28.0	29.0	30.0	31.0	32.0	33.0	34.0	35.0	36.0	37.0	38.0	39.5	41.0
Outseam	28.0	29.0	30.0	31.0	32.0	33.0	34.0	35.0	36.0	37.0	38.0	40.0	42.0
1/2 Waist	22.0	24.0	26.0	28.0	30.0	32.0	34.0	36.0	38.0	40.0	42.0	44.0	46.0

IDG-TKJ06

Size specs are guide only. +/- 1-2cm tolerance.

WOMENS SHORTS



Part	2XS (6)	XS (8)	S (10)	M (12)	L (14)	XL (16)	2XL (18)
Outseam	27.5	28.5	29.5	30.5	31.5	32.5	33.5
1/2 Waist	32.0	35.0	38.0	41.0	45.0	48.0	51.0

IDG-TJK03

Size specs are guide only. +/- 1-2cm tolerance.

2022

Warrnambool College

Sports Uniforms + Online Ordering



SIZE CHART

SOFTSHELL JACKET



Softshell Jacket Size Specs

	SIZE	K2	K4	K6	K8	K10
(A)	NEW 1/2 CHEST	34	37	40	43	46
(B)	FRONT LENGTH (HSP) - STRAIGHT	44	47	52	56	60
(C)	BACK LENGTH (HSP) - CURVED	48	51	56	60	64

**Womens sizes guide for reference only											
W8	W10	W12	W14	W16	W18						
K12	K14	XS	S	M	L	XL	2XL	3XL	4XL	5XL	6XL
48	50	52	54	57	60	63	66	69	73	77	81
62	64	66	68	70	72	74	76	78	82	85	85
65	67	69	71	73	75	77	79	81	85	88	89

**Women's equivalent sizes are for reference guide only. They will be marked as per sizes in yellow.

TRACKPANTS



SUBLIMATED SLIM FIT TRACKPANTS - IDG-XLK33										
SIZE	K10	K12	K14	XS	S	M	L	XL	2XL	3XL
Outseam (Length)	77	84	94	98	102	104	106	108	110	112
1/2 Waist (Relaxed)	28	31	33	35	37	39	41	43	45	47
1/2 Waist (Stretched)	34	35	37	39	42	45	47	50	52	55