

# T65J-H

## TELESCOPIC BOOM LIFT



**HIGH PERFORMANCE:** Platform height **65'**  
Dual capacity design: **992 lb (restricted)/ 661 lb (unrestricted)**. Supports **up to three operators** (2 occupants unrestricted/3 occupants restricted).

**DURABLE PROTECTION:** The **STANDARD LGMG Hostile Environment Kit** includes cylinder bellows, boom wipers, hydraulic hose sheathing, and a metal platform control box cover, protecting the machine in harsh jobsite conditions

**ADDED SECURITY:** **STANDARD** lockable **master battery disconnect switch** allows the lift to be shut down and secured from unwanted usage.

**BUILT TOUGH:** Steel service covers for better durability come **STANDARD**.

### POWER

Kubota V2403 36kW/48.3hp

### PLATFORM

- AC power to platform
- Anti-collision protection
- Auto-leveling platform
- Dual joystick proportional controls
- Emergency stop button
- Horn
- Hostile environment kit
- Metal platform control cover
- Motion alarm
- Overload sensing system
- Platform tool tray
- Tri-entry 8' x 3' platform

### CHASSIS

- Descent alarm
- Emergency descent system
- Emergency stop button
- Flashing beacons
- Hour meter
- Intelligent diagnostic system
- Oscillating axle
- Over-tilt protection system
- RT foam-filled tires
- Telematics ready

### OPTIONS

- 12kW Hydraulic generator
- 7.5 kW Hydraulic generator
- Aux rail
- Cold weather package
- Dual entry 6' x 2.5' platform
- External fall arrest bar
- Glazier kit
- Half-height mesh platform
- High float tires
- Pipe rack
- Quickfit port for oil changes
- RT foam-filled non-marking tires
- RT solid non-marking tires
- RT solid tires
- Telematics
- Welder ready package



LGMG NA provides an industry-leading 5-year/5,000 hour warranty on new boom lifts, scissor lifts, and vertical mast lifts, and a 3-year/3,000 hour warranty on new telehandlers with an option to purchase an extended warranty upon request.

Terms and conditions apply. Subject to LGMG's warranty policies then in effect. Please visit [www.lgmгна.com/warranty](http://www.lgmгна.com/warranty) for details.

# T65J-H

## TELESCOPIC BOOM LIFT



	Imperial	Metric
Work Height Max.	71'	21.8 m
Platform Height Max.	65'	19.8 m
Horizontal Outreach Max.	54'6"	16.6 m
Platform Length	8'	2.44 m
Platform Width	2'11"	0.9 m
Jib Length	4'8"	1.42 m
Ⓐ Stowed Length	33'6"	10.2 m
Length-Transport (jib tucked)	27'3"	8.3 m
Ⓑ Overall Width	8'2"	2.49 m
Ⓒ Stowed Height	9'1"	2.78 m
Height-Transport	9'6"	2.89 m
Ⓓ Wheelbase	8'3"	2.51 m
Ⓔ Ground Clearance	1'4"	0.4 m

### PRODUCTIVITY

Max. Platform Occupancy	2 (unrestricted) / 3 (restricted)	
Platform Capacity (unrestricted)	661 lb	300 kg
Platform Capacity (restricted)	992 lb	450 kg
Turntable Rotation	360° Continuous	
Platform Rotation	(+/-) 90°	
Turntable Tailswing	1' 5"	0.43 m
Vertical Jib Rotation	130°	
Drive / Steering Modes	4WD with 2 Wheel Steer	
Drive speed (stowed)	3 mph	4.8 km/h
Drive speed (raised)	0.5 mph	0.8 km/h
Gradeability	45%	
Outside Turning Radius	18'	5.5 m
Inside Turning Radius	8'2"	2.5 m
Max. Allowable Chassis Tilt	5°/5°	
Tire Type	RT foam-filled	
Tire Size	355/55D 625	
Tire Contact Pressure	97 psi	670 kPa
Occupied Floor Pressure	284 psf	13.6 kPa

### POWER

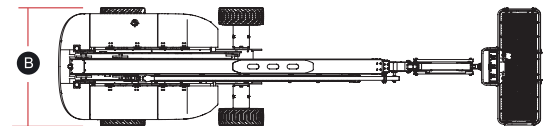
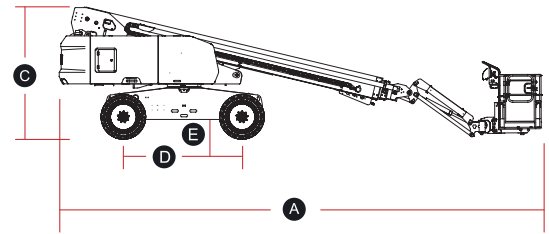
Power Source	Kubota V2403 36kW/48.3hp	
Fuel Tank Capacity	26.4 gal	100 L

### HYDRAULIC SYSTEM

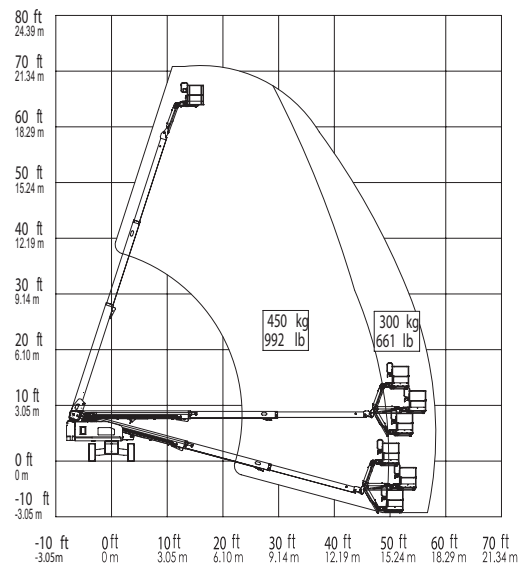
Hydraulic Oil Volume	47.5 gal	180 L
----------------------	----------	-------

### WEIGHT

Machine Weight	26,455 lb	12,000 kg
----------------	-----------	-----------



### T65J-H Working Range



ANSI A92.20, CSA B354.6

Please contact LGMG for more details. LGMG reserves the right to change technical data without prior notice. All photos and pictures in this brochure are for promotional purposes only. This brochure comes into effect in December, 2025.

### LGMG North America Inc.

Address: 4105 Live Oak Drive, Suite 100, The Colony, Texas 75056 United States

Email: sales@lmgna.com Tel: +1 833 288 5464

www.lmgna.com

