

# H1256

## TELEHANDLER



**HIGH PERFORMANCE:** 12,000 lb. lift capacity, 56' 1" max height, and 42' outreach for demanding tasks.

**ENHANCED MANEUVERABILITY:** Three steering modes, including four-wheel and crab steer, allow operators to easily navigate tight job sites.

**BUILT FOR ROUGH TERRAIN:** With four-wheel drive and industry-standard Dana® limited slip axles, the H1256 excels in uneven and demanding terrains.

**BUILT TOUGH:** Durable steel engine cover comes **STANDARD**.

**QUICK TRANSIT:** Cummins® 120 HP engine with a 15.5 mph travel speed saves time on-site.

**OPERATOR-FRIENDLY DESIGN:** The ergonomic cab features intuitive controls, multiple load chart placements for quick reference, and a spacious layout to reduce operator fatigue.



### STANDARD

- 120hp Cummins® engine
- 9 inch display with onboard diagnostics
- Aux hydraulic connectors
- Backup alarm
- Dana® limited slip axles
- Foam filled Tires
- Level indicator
- Lifting hook
- ROPS/FOPS enclosed cab (with heat and AC)
- Telematics ready
- ZF® Powershift transmission (4 fwd/3 rev)

### ATTACHMENTS

- 48" block forks
- 48", 60", 72" fork carriage
- 48", 60", 72" pallet forks
- 60" lumber forks
- Material bucket
- Side tilt carriage
- Swing carriage

### OPTIONS

- Block heater
- Boom work light
- Brick guard
- Cab worklights
- Rear view camera
- Road lights
- ROPS/FOPS open cab
- Solid tires
- Telematics



LGMG NA provides an industry-leading 5-year/5,000 hour warranty on new boom lifts, scissor lifts, and vertical mast lifts, and a 3-year/3,000 hour warranty on new telehandlers with an option to purchase an extended warranty upon request.

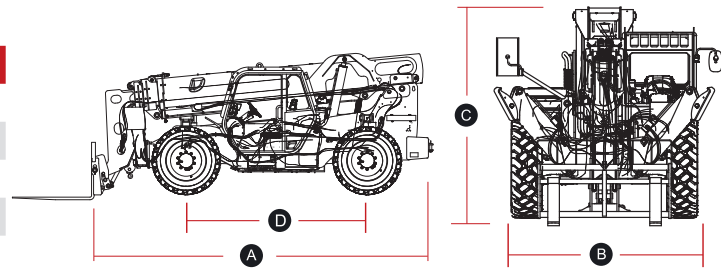
Terms and conditions apply. Subject to LGMG's warranty policies then in effect. Please visit [www.lgmgna.com/warranty](http://www.lgmgna.com/warranty) for details.

# H1256

## TELEHANDLER



	Imperial	Metric
Max. Lifting Height	56'1"	17.1 m
Max. Outreach	42'	12.8 m
<b>A</b> Overall Length	21'7"	6.57 m
<b>B</b> Overall Width	7'11"	2.41 m
<b>C</b> Overall Height	8'10"	2.7 m
<b>D</b> Wheelbase	11'6"	3.5 m
Ground Clearance	1'4"	0.4 m



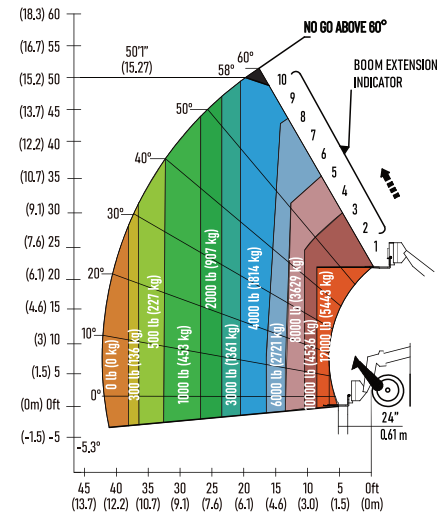
PRODUCTIVITY		
Max. Capacity	12,000 lbs	5,443 kg
Gradeability-Unladen	50%	
Min. Turning Radius	14'1"	4.3 m
Chassis Tilt	±10°	
Drive / Steering Modes	4WD with 4 Wheel Steer/2 Wheel Steer/Crab Steer	
Primary Boom Raise/Lower Time	20 s / 15 s	
Boom Extending / Retracting Time	25 s / 20 s	
Max. Travel Speed	15.5 mph	25 km/h
Brakes	Multi-disc SAHR wet brake	
Standard Foam Filled Tires	400/75-28	

POWER		
Power Source	Cummins QSF 3.8L T4f	
Rated Power	120.7 hp	90 kW
Max. Torque	369 lb-ft	500 Nm
Displacement	232 cu.in	3.8 L
Fuel Tank Capacity	38.3 gal	145 L

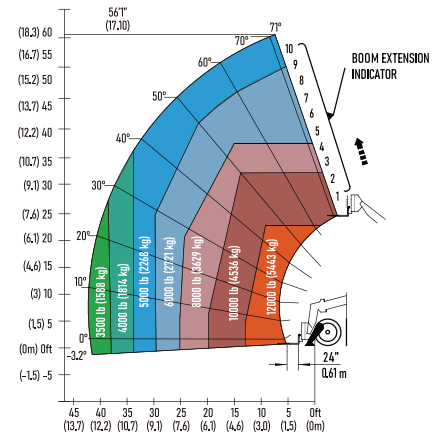
HYDRAULIC SYSTEM		
Function Pump Displacement	63 cc/r	
Hydraulic Tank Capacity	37 gal	140 L

WEIGHT		
Machine Weight	34,833 lb	15,800 kg

Load Chart - Outriggers Up



Load Chart - Outriggers Down



ANSI B56.6, CSA 335-15

Please contact LGMG for more details. LGMG reserves the right to change technical data without prior notice.

All photos and pictures in this brochure are for promotional purposes only.

This brochure comes into effect in December, 2025.

## LGMG North America Inc.

Address: 4105 Live Oak Drive, Suite 100, The Colony, Texas 75056 United States

Email: sales@lmgna.com Tel: +1 833 288 5464

www.lmgna.com

