

Pass Through Security Wall-Mounted Transfer Unit

Technical Data Sheet



Product Description

The units are provided with fixing holes for fixing either as single units directly into a wall aperture, or to provide multiple boxes connected together.

Advantages

The units are fabricated to provide both physical attack and ballistic protection. We offer a range of security and ballistic ratings to suit a range of different situations.

The Model BB PT1 is designed to accept Cell Phones and Laptops and is used in applications where staff or visitors need to pass their devices securely from one side of the wall to the other.

When opening the front facing door the rear door is automatically locked. Phones or Laptops are placed into the box and then the door is locked. The respective person then makes their way to the rear of the box on the opposite side of the wall and whilst the inner door is unlocked, the outer door remains closed and secure.

Features

- Units available up to RC4 security and FB6 ballistic on request
- Interlocking system with emergency keys
- Internal power supply 12V 5A

Areas of Application

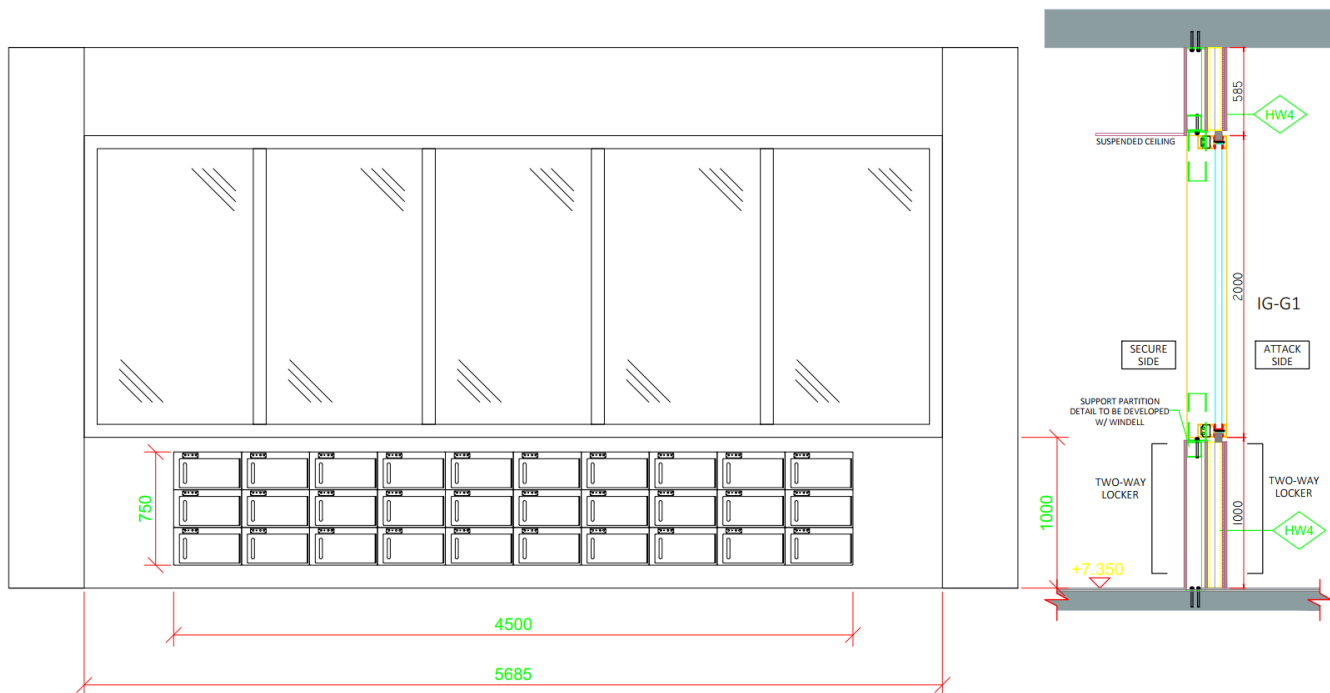
- Embassies
- Post Offices
- Banks
- Cash Offices
- Chemists/Pharmacies
- Petrol Stations
- Hospitals
- Retail Stores

Specification

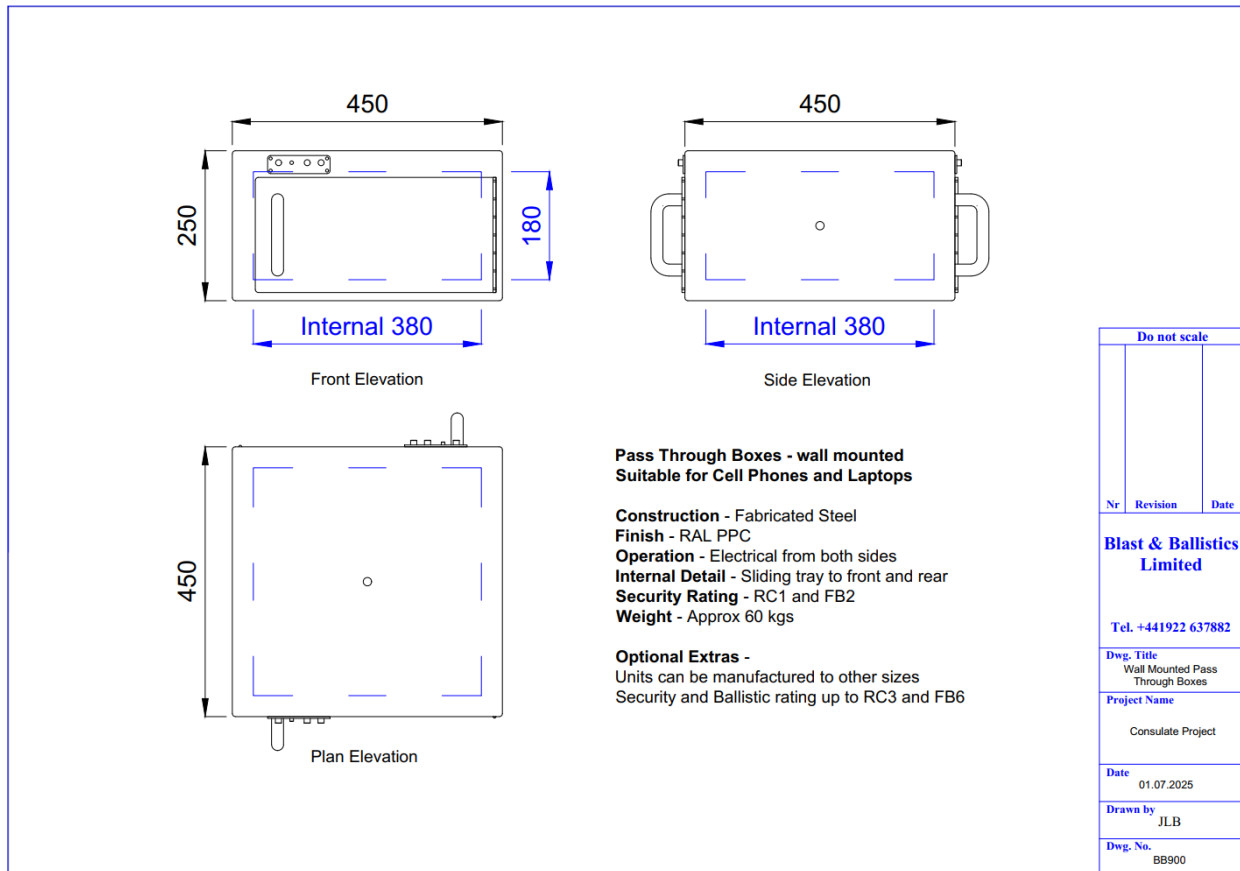
CONSTRUCTION	
✓	Heavy duty steel folded sections and strengthening profiles
AVAILABLE SIZES	
✓	Standard Model BB PT1: Outer Dimensions – 450mm wide x 450mm deep x 250mm high Inner Dimensions – 380mm wide x 380mm deep x 180mm high
✓	Bespoke sizes made to order
FINISH	
✓	Factory PPC finish to a choice of standard colours
INSTALLATION	
✓	Either direct into a prepared wall aperture or bolted together to form multiple units for commercial applications
INTERLOCKING FUNCTION	
✓	Supplied as standard, only one door can be opened at any time.
ELECTRIC RELEASE	
✓	1000kgs holding force
PHYSICAL RESISTANCE	
✓	EN1627 RC1 as standard
✓	RC2, RC3 & RC4 available on request
BALLISTIC RESISTANCE	
✓	EN1522 FB2 as standard
✓	FB4 & FB6 available on request
INTERNATIONAL SHIPPING	
✓	Units are supplied in International Shipping Crates
WEIGHT	
✓	Model BB PT1 – approximately 60kgs



Sample Drawings



30-unit configuration shown above within a wall.



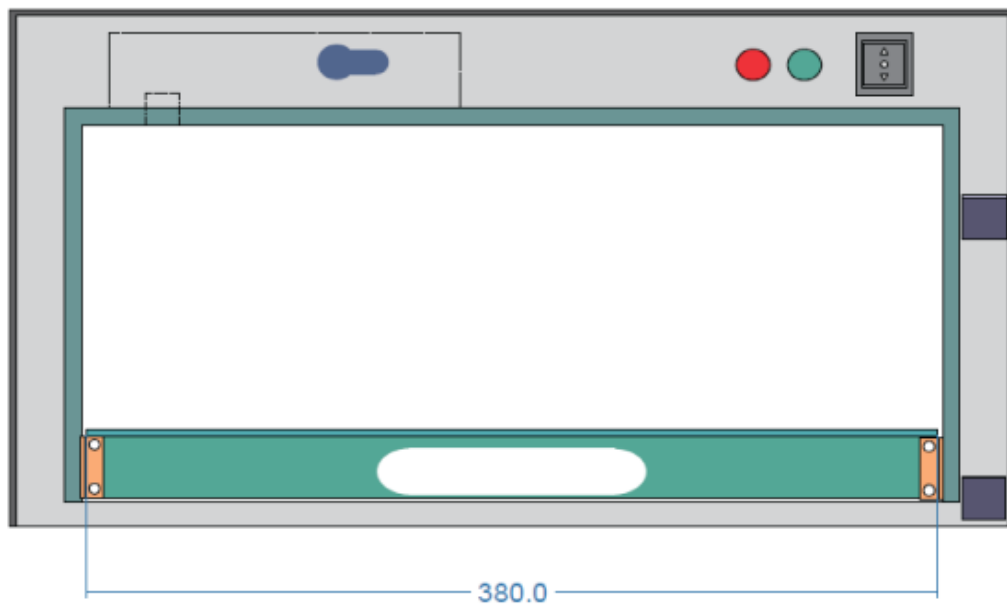
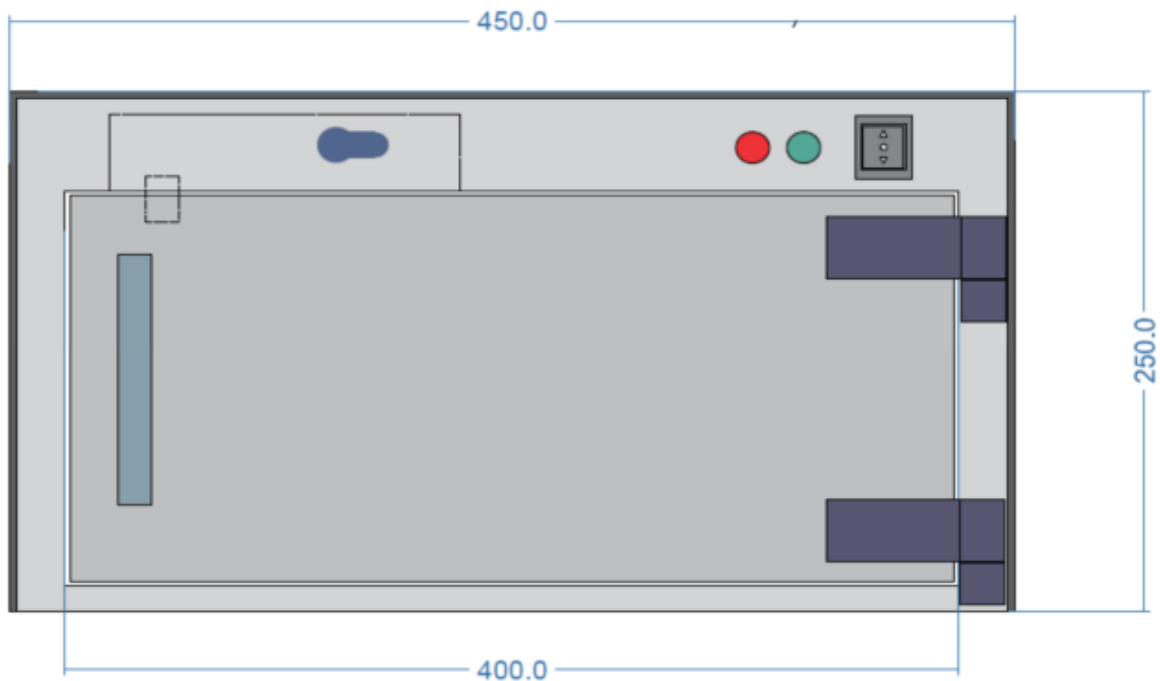
Security & Ballistic Standards

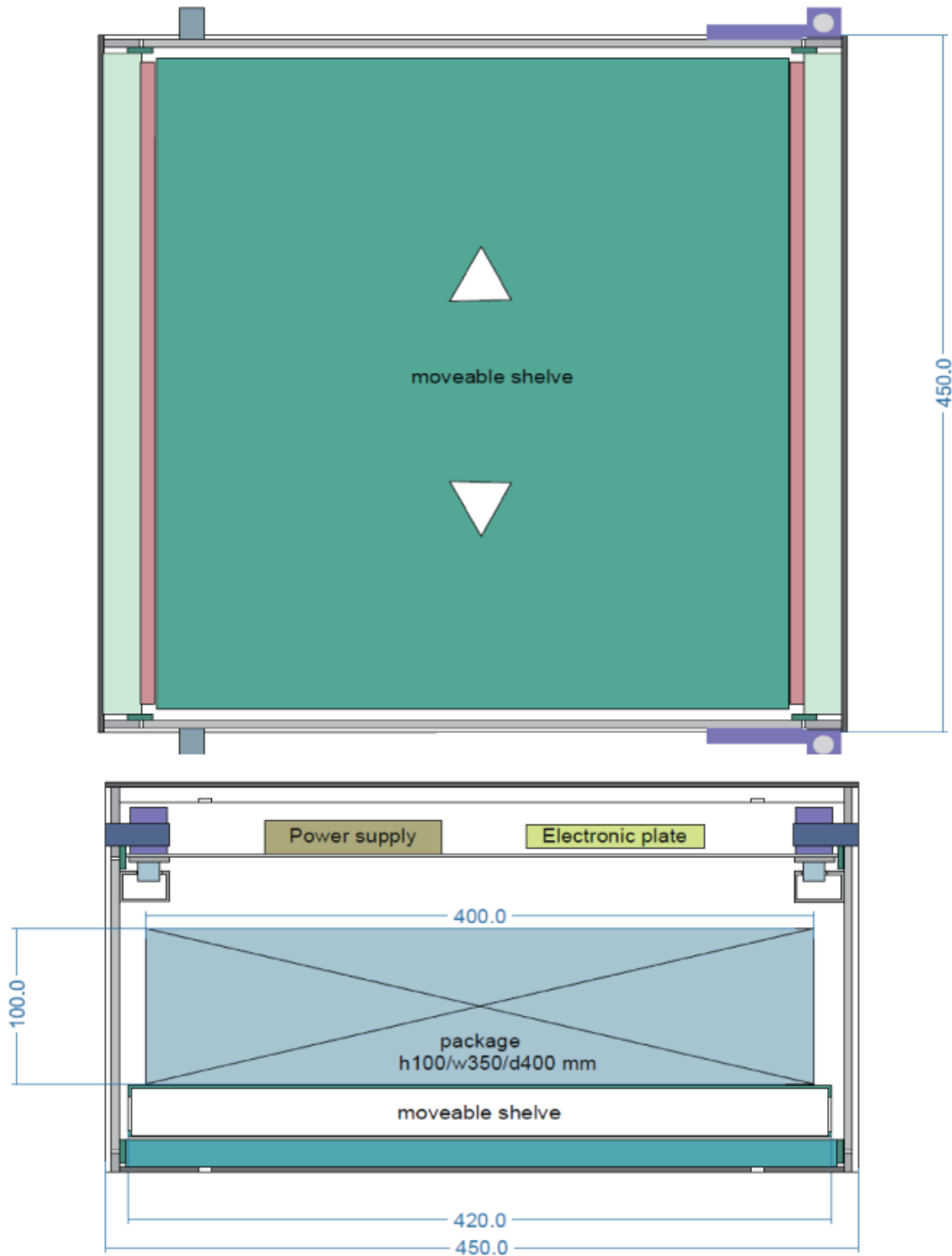
BS EN1627 RC1 – RC4:

BS EN 1627 is a European standard that defines the resistance classification of a product against unauthorised manual attack. It is commonly used to assess how well these products can withstand forced entry by using specific tools and techniques.

BS EN1522/23 FB2 – FB6:

BS EN 1522/1523 is a European ballistic standard that defines the performance requirements and test methods for bullet-resistant products. It is designed to provide a classification based on their ability to withstand different types of ballistic threats.





See Terms and Conditions, available upon request.