



Double doorset installation with  
ballistic louver above

## Ballistic Louver Vents and Fixed Blast Louvers

**- Please specify required  
blast resistance**

- Designed primarily for commercial and military environments.
- PPC factory applied finishes in a wide range of RAL colours
- For internal and external applications
- Can be installed into walls, panels and doors
- Available with flammable liquids catch tray to eject liquids which may be poured into the vents
- Ballistic certification for handguns and rifles
- Available in all sizes
- Can be installed into recess or face mounted with flange

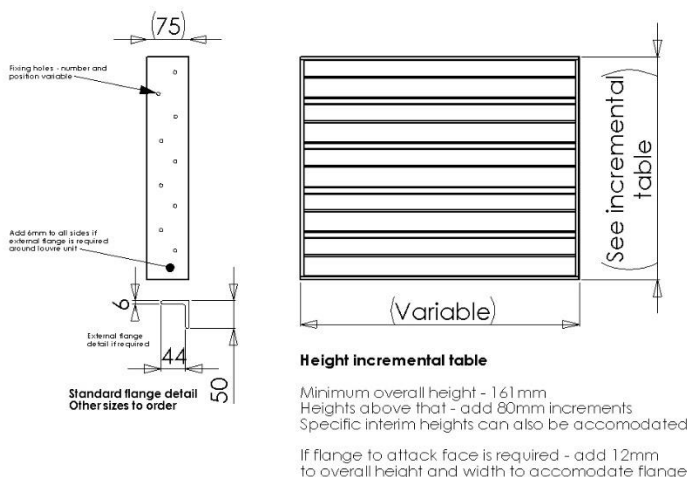


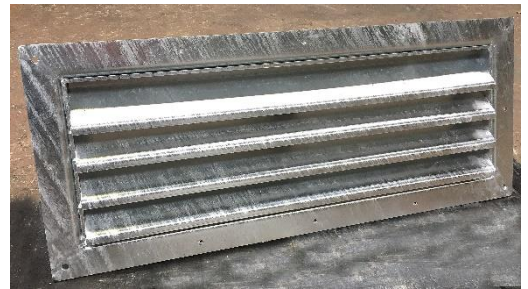
Illustration showing  
louver without  
external face fix  
flange detail – allow  
12mm all around for  
flange thickness or  
send opening sizes  
with order and we  
will confirm.

Frame profile	
✓	Folded or drawn steel profiles
✓	Minimum frame depth/wall thickness 100mm
Finishes	
✓	Factory applied Polyester Powder Coat
✓	Stainless Steel
✓	Galvanised
✓	Prime paint finish
Available sizes	
✓	Minimum 200mm width x 200mm height
✓	No maximum single pane size but suggest < 1.5m <sup>2</sup> due to weight
✓	With additional units - indefinite
Weights	
✓	Varies with blast protection required but minimum 25kg/m <sup>2</sup>
Certified Standards	
✓	Each unit also has independent 3rd party calculations
✓	Each order is supplied with calculations within O and M manual
Physical Attack Testing	
✓	Not currently tested
Blast ratings	
✓	Individually calculated to meet and exceed required blast ratings
✓	Protecting against fragmentation - Intended not to fragment
Options	
✓	Further structural frameworks to support large areas
Packing	
✓	Supplied in international crates for dispatch

## Blast Louvres

Blast louvres are manufactured to allow the free passage of air throughout buildings. They can also be used as a visual screen to hide plant and machinery.

In addition, they built so as not to break apart when subjected to a blast load which would produce fragmentation. If a standard louvre collapsed under blast load there would be serious risk of injury to people and damage to property. Blast louvres are intended to prevent that from happening.



Galvanised finish Blast Louvre

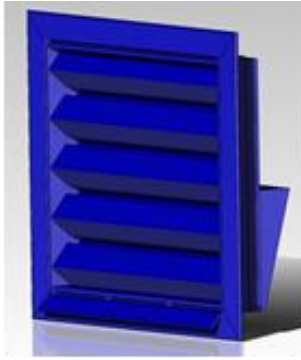


Blast louvres can also be used to hide plant and machinery but offer protection from blast at the same time.

Also available in factory Polyester Powder Coat finishes to various RAL colours

Available with or without flanges for fixing directly into masonry openings

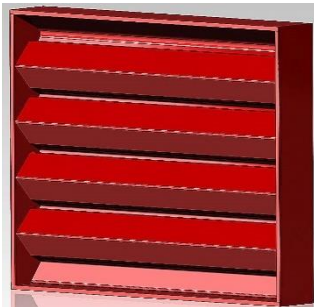
# Ballistic Louvres



With external face fix flange

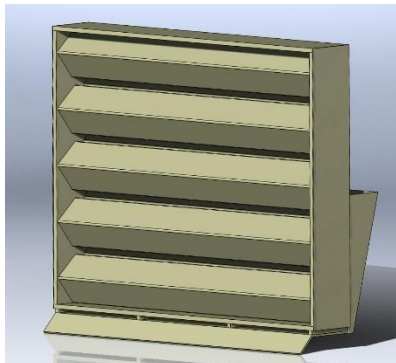


Full height inner tray on an FB5, FB6 and AK47 model

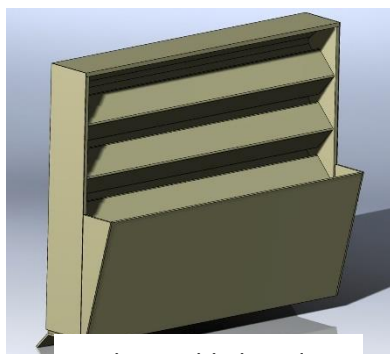


No external flange for recessed applications

Note: Catch tray not supplied as standard item, to be ordered with louver if required



Flammable liquids catch tray – no flange viewed from outside



Flammable liquids catch tray – no flange viewed from inside

Main frame outer assembly	
✓	Available as steel fabricated profile
✓	Minimum frame depth/wall thickness required 80mm
Louver blades	
✓	50mm
✓	Multi layered ballistic construction
Finishes	
✓	Factory applied Polyester Powder Coat
✓	Galvanised
✓	Prime paint finish
Available sizes	
✓	Minimum overall dimension 300mm x 250mm
✓	In multiple units - indefinite
Fixing method	
✓	Face fixed
✓	Recessed into wall/panel
Certified Ballistic Standards	
✓	BS EN1522/23 FB6 - 7.62 NATO
✓	BS EN1522/23 FB5 - 5.56 NATO
✓	Special - AK47 Stannag based
✓	BS EN1522/23 FB4 - .44
✓	BS EN1522/23 FB3 - .357
✓	NIJ 0108.01 IIIA - .44
✓	NIJ 0108.01 IIIA - 9mm
✓	BS 5051 - G2/S86 - .357, .44, Shotgun
Compatible additional items	
✓	Flammable liquid catch tray to eject liquids
Weights	
✓	Approx. 120kg/m <sup>2</sup>
Packing	
✓	Supplied in international crates for dispatch



# Independent Ballistic Testing

**Wiltshire Ballistic Services Ltd**  
The Ranges, Station Road, Devizes,  
Wiltshire SN10 1BZ, England.  
Tel: +44 (0)1380 721644 Fax: +44(0)1380 721421  
http://www.wiltshireballistics.co.uk

**BALLISTIC TEST REPORT – Ballistic Louvre/Vent**

The test sample was constructed of profiled flat steel and steel rolled sections to form a Ballistic Louvre/Vent. Final appearance is similar to that of a conventional louvre.

The sample was also fitted with a 'catch tray' to mitigate the ingress of flammable liquids.

The Ballistic Louvre was tested to BS EN1522/23: FB5 and FB6 and also with AK 47 ammunition.

The louvre held all shots without spall.

This test was carried out at Wiltshire Ballistic Services Ltd on the 20<sup>th</sup> of March 2013.

The results contained in this report are only valid for the samples tested and detailed above. The publication of these results in any abridged form is not allowed without approval by Wiltshire Ballistic Services Ltd, in writing.

Prepared by: S Pfeiffer-Taylor  
Business Manager

Approved by: F. Petrou  
Range Manager

Date: 28<sup>th</sup> May 2013

Registered Office: 5th Floor, 6 St Andrew Street, London EC4A 3AE. Registered in England - No 4050177

Form 71 – Issue 1 – 28/11/12

**BALLISTIC LOUVRE** Wiltshire Ballistic Services - Trials Data Sheet

Client: John Barclay Standard: BS EN1522/23: FB5 and FB6 Date: 17/3/13 Set: 1660 Finish: 1620 Trial No: 10080e

Range Staff: CNA / Range Temperature: 16.3°C Range Humidity: 85% Range Pressure: 788 mbar Sheet: 1 of 5

Title/Venue: 940 m/s m/s 860 Barrel Number: 2450 Powder Used: Fumag Wires Type: C.A.D.

Shot	Calibre	Velocity	Distance	Impact	Penetration	Remarks	Notes
1	7.62x39mm	1025	10m	Hit	100mm	Hit	8.5
2	7.62x39mm	1025	10m	Hit	100mm	Hit	8.5
3	7.62x39mm	1025	10m	Hit	100mm	Hit	8.5
4	7.62x39mm	1025	10m	Hit	100mm	Hit	8.5
5	7.62x39mm	1025	10m	Hit	100mm	Hit	8.5
6	7.62x39mm	1025	10m	Hit	100mm	Hit	8.5
7	7.62x39mm	1025	10m	Hit	100mm	Hit	8.5
8	7.62x39mm	1025	10m	Hit	100mm	Hit	8.5
9	7.62x39mm	1025	10m	Hit	100mm	Hit	8.5



Ventilation Grilles are often required for cooling and to provide air transfer around all types of plant and equipment. Ballistic louvers (sometimes also referred to as bullet louvers or bullet louvres) provide ballistic or bullet protection and also air ventilation at the same time. A ballistic or bullet air vent as shown above can be installed either within the recess of a wall or panel, or even within a doorset as shown below. The bullet louvre vents can also be full door height and therefore produce a ballistic protected louver doorset for added flexibility and also airflow at the same time.

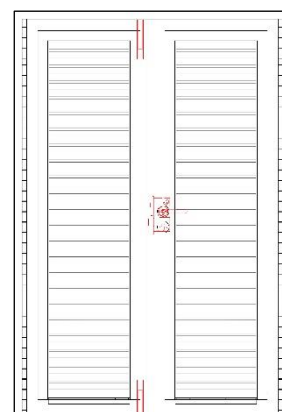
## Ballistic doorset with bullet louvers



Internal view



External view



Double doorset  
drawn detail