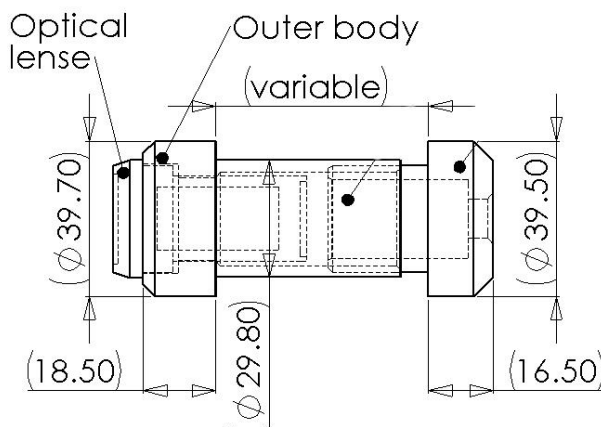




Ballistic rated door viewer

### Ballistic rated door viewers

- Designed primarily for commercial, residential and military environments.
- Satin stainless steel finish with brass and other patinated options
- For internal and external applications
- Extensive range of testing
- Can be adjusted to suit varying door and panel thicknesses
- Extension pieces and spacers available to accommodate oversize thickness of panels
- Fire rated to 60 minutes
- Wide range of ballistic and bullet protection and is sometimes also referred to as 'bullet peephole', 'bullet door viewer' and many other variations more specific such as AK47 spyhole even.



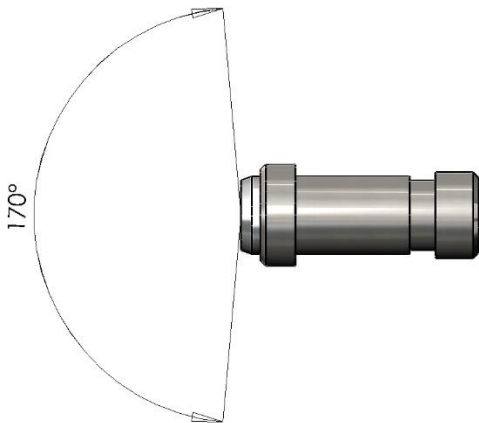
Ballistic door viewer detail

The door viewer has a body diameter of 29.8mm and a 30mm diameter hole is required to accept the door viewer. **Email for special sizes and modifications to suit all applications.**



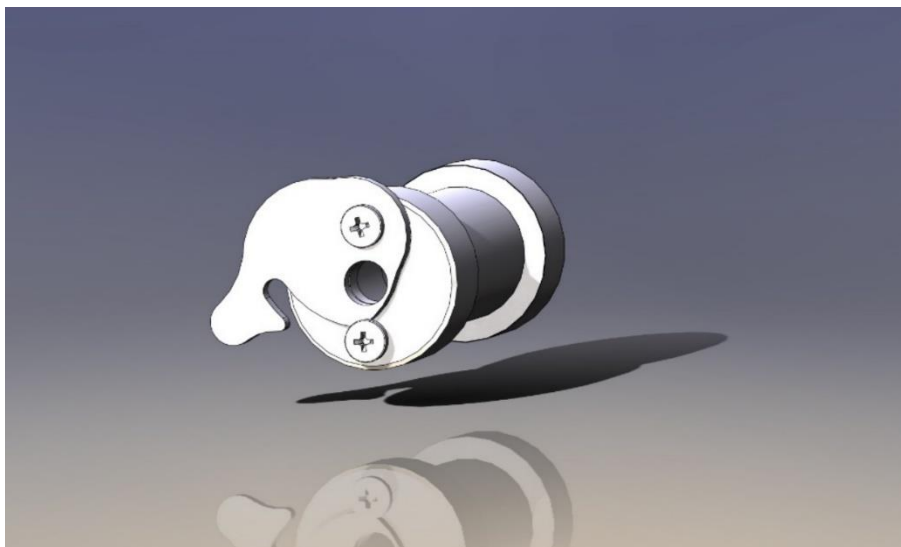
Courtesy of Wiltshire Ballistic Services

United Kingdom Ministry of Defence  
approved test centres



Wide angle of vision up to 170 degrees

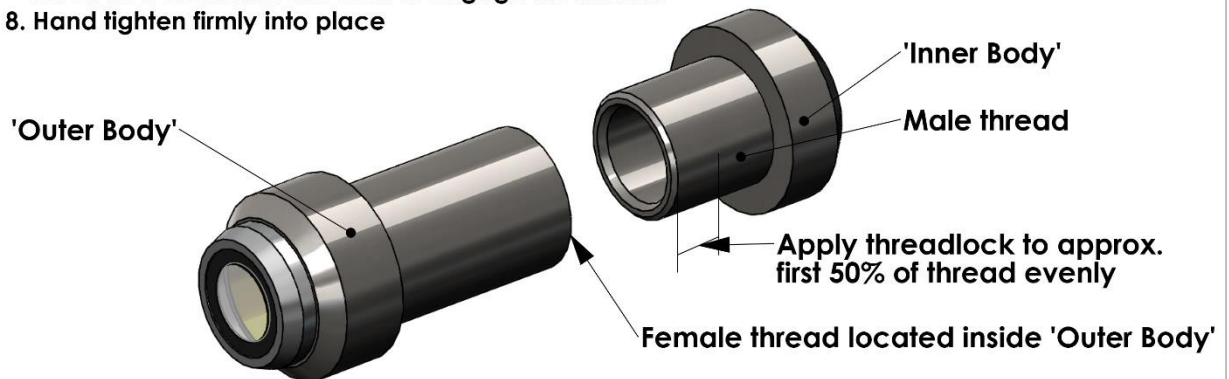
Material	
✓	Stainless Steel
Finishes	
✓	Satin Stainless Steel
✓	Brass and other patinated finishes
Available sizes	
✓	Standard size product but adjustable up to 100mm + see chart and Door thicknesses 25 – 200mm and American sizes 1", 1¼", 1½", 1¾", 2", 2¼", 2½", 2¾", 3", 3¼" etc to 8"
Glass	
✓	Standard optics
✓	Internal ballistic inserts
Ballistic Insert Thicknesses	
✓	Dependent upon ballistic protection
Certified Ballistic Standards	
✓	BS EN1522/23/1063 - FB7/BR7
✓	BS EN1522/23/1063 - FB6/BR6
✓	BS EN1522/23/1063 - FB5/BR5
✓	BS EN1522/23/1063 - FB4/BR4
✓	BS EN1522/23/1063 - FB3/BR3
✓	BS EN1522/23/1063 - SG1 Solid Slug
✓	NIJ 0108.01 IV
✓	NIJ 0108.01 III
✓	NIJ 0108.01 IIIA
✓	NIJ 0108.01 II
✓	UL752 Level 9 and UL752 Level 5
✓	UL752 Level 7 and UL572 Level 3
✓	AK47
Blast ratings	
✓	Arena testing 100 kg @15m with ballistic protection
✓	Protecting against fragmentation - grenades and pipe bombs
Fire rating	
✓	BS476: Part 20/22:1987 FD60
Weights	
✓	Approx. 450gms
Packing	
✓	Supplied boxed for dispatch



Available with  
manganese  
inner privacy  
flap if required  
for drill  
resistance

# Installation

1. Prepare a 30mm dia. through hole into the door/panel
2. Remove all dust and debris from within the hole
3. Ensure that both the male and female mating threads of the viewer are clean and free from grease
4. Insert the 'Outer Body' of the viewer into the hole from the attack side
5. Apply an even film of high strength threadlock assembly compound onto the male thread of the 'Inner Body' covering approximately 50% of the thread length
6. Insert 'Inner Body' into opposite side of door/panel so that it locates into the 'Outer Body'
7. Hold one of the viewer components in each hand and screw in a clockwise direction to engage the threads
8. Hand tighten firmly into place



<div>PROPRIETARY AND CONFIDENTIAL</div> <div>THE INFORMATION CONTAINED IN THIS DRAWING IS THE SOLE PROPERTY OF Blast and Ballistics Ltd. ANY REPRODUCTION IN PART OR AS A WHOLE WITHOUT THE WRITTEN PERMISSION OF Blast and Ballistics Ltd IS PROHIBITED.</div>				DIMENSIONS ARE IN mm		NAME		DATE		<div>Blast&amp;Ballistics Ltd.</div> <div>Wide Angle Ballistic Viewer Installation Instructions</div> <div>SHEET A</div> <div>DWG. NO. BBII 001</div> <div>SCALE: 1:1</div> <div>WEIGHT: 440gm</div> <div>SHEET 1 OF 1</div> <div>REV.</div>			
				TOLERANCES:		DRAWN		JLB				10.11.2012	
				FRACTIONAL: ±		CHECKED							
				ANGULAR: MACH ±		ENG APPR.							
				TWO PLACE DECIMAL ±		MFG APPR.							
THREE PLACE DECIMAL ±				Q.A.									
NEXT ASSY				USED ON		FINISH		COMMENTS:					
APPLICATION				DO NOT SCALE DRAWING									



Product  
inspection  
before dispatch

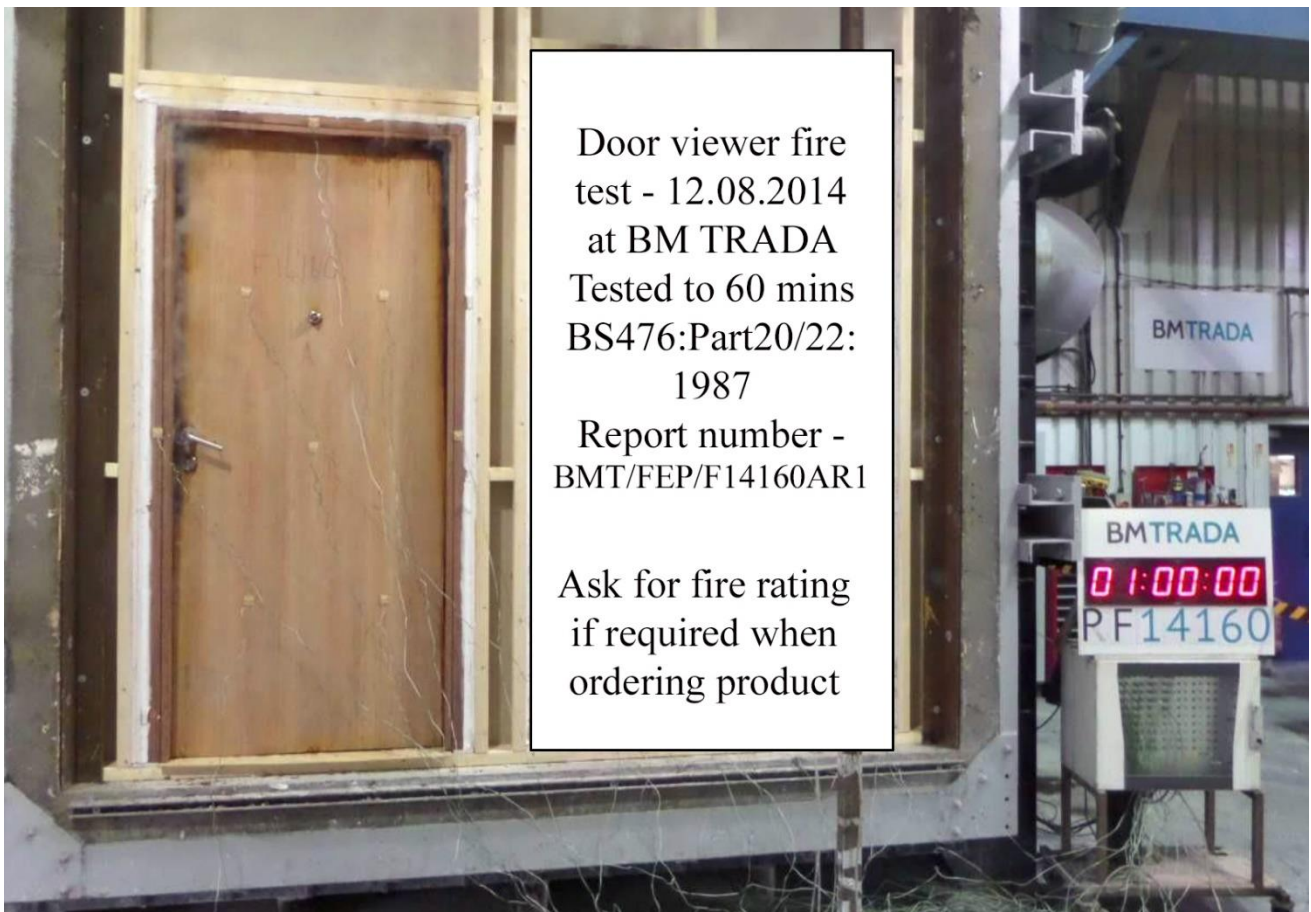


Shown below: door viewers after ballistic testing with inspection slots  
machined into viewer bodies

Left to right – 7.62 armour piercing, 7.62 NATO, 5.56 NATO, .44 and .357



## Fire Rating


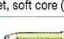


Door viewer fire  
test - 12.08.2014  
at BM TRADA  
Tested to 60 mins  
BS476:Part20/22:  
1987

Report number -  
BMT/FEP/F14160AR1

Ask for fire rating  
if required when  
ordering product

## Ballistic charts showing the relationship between weapons and ammunition

CLASS	WEAPON TYPE	CALIBRE	AMMUNITION TYPE	MASS (g)	RANGE (M)	VELOCITY (M/S)	STRIKE PATTERN
BR1	Rifle	 22lr	 Lead round nose	2.6+/-0.1	10+/-0.5	360+/-10	3 x 120+/-10
BR2	Handgun	 9mm Luger	 Full steel jacket, plated round nose, soft core (lead)	8.0+/-0.1	5+/-0.5	400+/-10	3 x 120+/-10
BR3	Handgun	 .357 Magnum	 Full steel jacket, plated coned bullet, soft core (lead)	10.2+/-0.1	5+/-0.5	430+/-10	3 x 120+/-10
BR4	Handgun	 .44 Remington Magnum	 Full copper alloy jacket, flat nosed, soft core (lead)	15.6+/-0.1	5+/-0.5	44+/-10	3 x 120+/-10
BR4+	Rifle	 7.62 x 39 Twist Length 240mm	 Full jacket, pointed bullet Soft/FE-Core 3.6 gram	8.0+/-0.1	10+/-0.5	720+/-10	3 x 120+/-10
BR5	Rifle	 5.56 x 45 Twist Length 178mm +/- 10	 Full copper alloy jacket pointed bullet, soft core (lead) and steel penetrator (Type SS109)	4.0+/-0.1	10+/-0.5	950+/-10	3 x 120+/-10
BR6	Rifle	 7.62 x 51	 Full steel jacket, plated pointed Bullet, soft core (lead)	9.5+/-0.1	10+/-0.5	830+/-10	3 x 120+/-10
BR7	Rifle	 7.62 x 51 twist Length 254mm +/- 10	 Full copper alloy jacket pointed bullet, steel hard core, mass 3.7mm +/-0.1g hardness more than 53HRG	9.8+/-0.1	10+/-0.5	820+/-10	3 x 120+/-10

Above: BS EN 1522/23 and BS EN1063

Below: UL 752 comparisons

Rating	Ammunition	Weight (grains)	Weight (grams)	Min fps	Max fps	Number of Shots
Level 1	9mm Full Metal Copper Jacket with Lead Core	124	8.0	1175	1293	3
Level 2	.357 Magnum Jacketed Lead Soft Point	158	10.2	1250	1375	3
Level 3	.44 Magnum Lead Semi-Wadcutter Gas Checked	240	15.6	1350	1485	3
Level 4	.30 Caliber Rifle Lead Core Soft Point (.30-06 Caliber)	180	11.7	2540	2794	1
Level 5	7.62mm Rifle Lead Core Full Metal Copper Jacket Military Ball (.308 Caliber)	150	9.7	2750	3025	1
Level 6	9mm Full Metal Copper Jacket with Lead Core	124	8.0	1400	1540	5
Level 7	5.56mm Rifle Full Metal Copper Jacket with Lead Core (.223 Caliber)	55	3.56	3080	3383	5
Level 8	7.62mm Rifle Lead Core Full Metal Copper Jacket Military Ball (.308 Caliber)	150	9.7	2750	3025	5
Level 9	30-06 Caliber Rifle, Steel Core, Lead Point Filler, FMJ (APM2)	166	10.8	2715	2987	1
Level 10	.50 Caliber Rifle, Lead Core FMCJ Military Ball (M2)	709.5	45.9	2810	3091	1
Shotgun	12-Gauge Rifled Lead Slug	1oz	28.3	1585	1744	3
	12-Gauge 00 Buckshot (12 pellets)	1.5oz	42	1200	1320	3

Panel thickness / compatibility chart

Door thickness	BR4 with Standard 25.5mm Inner body	BR4 with Extended 35.5mm Inner body	6mm spacer Standard 25.5mm Inner body	BR5/6 with Standard 25.5mm Inner body	BR5/6 with Extended 35.5mm Inner body	6mm spacer Standard 25.5mm Inner body	BR7 with Standard 25.5mm Inner body	BR7 with Extended 35.5mm Inner body	6mm spacer Standard 25.5mm Inner body	6mm spacer Extended 25.5mm Inner body
25										
26										
etc										
↑	With spacer rings					American Imperial Sizes in inches and equivalents 1", 1⅛", 1¼", 1⅝", 1½", 1⅞", 1¾", 1⅞", 2", 2⅞", 2¼", 2⅝", 2½", 2⅞", 2¾", 2⅞", 3", 3⅞", 3¼" etc to 8"				
43			✓							
44			✓							
45			✓			✓				
46			✓			✓				
47			✓			✓				
48			✓			✓			✓	
49	✓					✓			✓	
50	✓					✓			✓	
51	✓				✓				✓	
52	✓				✓				✓	
53	✓				✓				✓	
54	✓				✓		✓			
55	✓				✓		✓			
56	✓				✓		✓			
57	✓				✓		✓			
58	✓				✓		✓			
59	✓	✓			✓		✓			
60	✓	✓			✓		✓			✓
61		✓								✓
62		✓			✓					✓
63		✓			✓					✓
64		✓			✓					✓
65		✓			✓			✓		
66		✓			✓			✓		
67		✓			✓			✓		
68		✓			✓			✓		
69		✓			✓			✓		
70		✓			✓			✓		
71	↑				↑				↑	
72										
73										
74										
75										
76										
77										
78										
79										
80										
81										
82										
83										
84										
85	With extension sleeves									
86										
87										
88										
89										
90										
91										
92										
93										
94										
95										
96										
97										
98										
99										
100	↓				↓				↓	
Up to 210mm					6					



## Imperial – American sizes



The most common sizes that are requested in Imperial or American sizes are 1", 1-1/8", 1-1/4", 1-3/8", 1-1/2", 1-5/8", 1-3/4", 1-7/8", 2", 2-1/8", 2-1/4", 2-3/8", 2-1/2", 2-5/8", 2-3/4", 2-7/8" then 3" and upwards. The ballistic door viewers (or bullet peepholes as sometimes referred to) are labelled in either inches or mm in accordance with how they are ordered. Click here for more pictures and information:

[www.blastandballistics.com/products/ballistic/ballistic-door-viewers.php](http://www.blastandballistics.com/products/ballistic/ballistic-door-viewers.php)