

HAZARDOUS LOCATIONS

AIR CURTAIN Series #
HLC12 / HLC14
HLC16 / HLC20

Durable Construction with
EXPLOSION PROOF motors.

IDEAL APPLICATIONS:

- CNG Bus Garages
- Processing Plants
- Pharmaceutical Facilities
- Water & Sewage Plants
- Food Processing Manufacturers



Designed and manufactured to comply with
ANSI/NFPA-70 National Electrical Code (NEC)
for Electrical Equipment:

Class I, Division 1 and 2, Groups C and D for gases
Class II, Division 1 and 2, Groups F and G for dust

Optional construction available:
For Class 1, Division 1 and 2, Groups A and B



Saving Energy and Creating Healthy, Comfortable Environments

800-245-4455
www.berner.com



BERNER

HAZARDOUS LOCATION

Industrial Air Curtains

- Used in areas where dust or gases may create a hazardous situation to keep temperatures stable and flying insects out when the doors are open.
- Engineered to perform and built to last.
- Simple to install, operate, and maintain.

HEAT OPTIONS:

Steam
Hot Water

HLC12 & HLC14



HLC12 - For mounting heights to 12'
HLC14 - For mounting heights to 14'

HLC16 & HLC20



HLC16 - For mounting heights to 16'
HLC20 - For mounting heights to 20'

Standard Construction

- Constructed for Class I, Division 1 & 2, Groups C & D (Consult factory for group A or B)
- Constructed for Class II, Division 1 & 2, Groups F & G
- Explosion proof motors temperature code T3C (Consult factory for T4 and above)
- MCHL cable factory wiring
- External mount explosion proof junction box (One per motor)
- Aluminum impellers in a matching housing
- 100% Coverage gray zinc epoxy powder coated aluminized steel cabinet (interior and exterior)
- Mounting flanges with 1/2" holes
- Parts Warranty: Ambient - Five years, Heated - Two years

- Lengths from 36" to 192"
- Perforated aluminum air inlet screen
- Aluminum bottom access panels
- 3.5" Outlet Pro-V nozzle with (2) airfoil aluminum directional vanes adjustable +/- 20° of centerline

- Lengths from 60" to 192"
- Fiberglass air diverters factory assembled to the outlet of each blower housing
- 4.5" Outlet nozzle with airfoil aluminum directional vane adjustable +/- 20° of centerline

Stainless Steel Construction Available

Contact Berner Representative

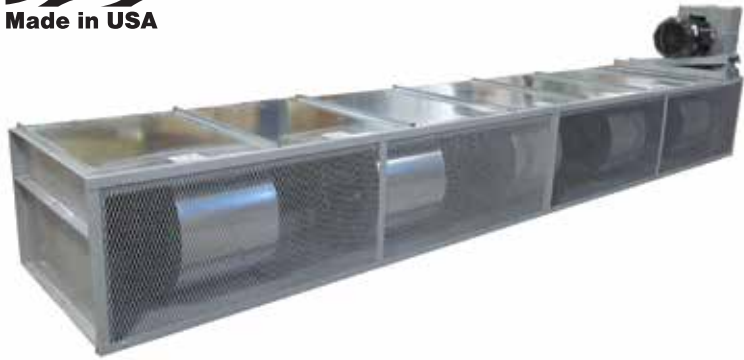


www.berner.com
111 Progress Avenue
New Castle, PA 16101
800-245-4455 724-658-3551

F-HLC-March, 2015
©Copyright, 2015 Berner International Corporation



Made in USA



Custom Colors &
Stainless Steel Available

AIR CURTAIN Series # IBC16 / IBC20

BERNER INDUSTRIAL Belt Drive 16 & 20

- Used to keep temperatures stable and flying insects out when the doors are open.
- Engineered to perform and built to last.
- Berner is a UL Listed panel shop.

IDEAL APPLICATIONS:

Shipping & Receiving
Train & Bus Bays

HEAT OPTIONS:

Electric
Steam
Hot Water
Indirect Gas
Direct Gas

IBC16 - For mounting heights up to 16' (environmental separation) and 14' (insect control)
IBC20 - For mounting heights up to 20' (environmental separation) and 18' (insect control)

Standard Construction

- 21" high x 32 1/4" deep
- Single-speed T.E.F.C. motor — belt drive
IBC16 - 3 to 10 hp
IBC20 - 5 to 15 hp
- Split cabinet construction for fan assembly removal
- Gray powder-coated exterior
- High efficiency Pro-V Nozzle
- Top mounting only
- Optional:
2" aluminum air inlet filter (washable)
- Parts Warranty:
Ambient - Five years
Heated - Two years

Installation & Mounting

Simple to install, operate & maintain

- Single lengths up to 16'
- No Assembly Required
- 1/2" holes for top mounting

Options:

- Mounting brackets available for horizontal and vertical mounting.
- Nozzle Extensions

Control Options

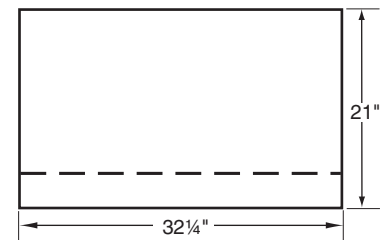
- Three Phase Control Panel (required) -
Built-in or Remote Mounted NEMA 4/12

Activation device (required) options:

- Plunger, roller arm, whisker arm or heavy duty door switch(es)
- On/Off switches



www.berner.com
111 Progress Avenue
New Castle, PA 16101
800-245-4455 724-658-3551



F-IBC16 IBC20-March, 2015
©Copyright, 2015 Berner International Corporation



Custom Colors &
Stainless Steel Available

AIR CURTAIN Series # IDC16 / IDC20

BERNER INDUSTRIAL Direct Drive 16 & 20

- Used to keep temperatures stable and flying insects out when the doors are open.
- Engineered to perform and built to last.
- Berner is a UL Listed panel shop.

IDEAL APPLICATIONS:

Shipping & Receiving
Train & Bus Bays

HEAT OPTIONS:

Electric
Steam
Hot Water
Indirect Gas
Direct Gas

IDC16 - For mounting heights up to 16' (environmental separation) and 14' (insect control)
IDC20 - For mounting heights up to 20' (environmental separation) and 18' (insect control)

Standard Construction

- 21" high x 32 1/4" deep
- Single-speed T.E.A.O. motor(s) — direct drive
 - IDC16 - 3 to 7 1/2 hp
 - IDC20 - 5 to 15 hp
- Split cabinet construction for fan assembly removal
- Gray powder-coated exterior
- High efficiency Pro-V Nozzle
- Top mounting only
- Optional:
 - 2" aluminum air inlet filter (washable)
- Parts Warranty:
 - Ambient - Five years
 - Heated - Two years

Installation & Mounting

Simple to install, operate & maintain

- Single lengths up to 16'
- No Assembly Required
- 1/2" holes for top mounting

Options:

- Mounting brackets available for horizontal and vertical mounting.
- Nozzle Extensions

Control Options

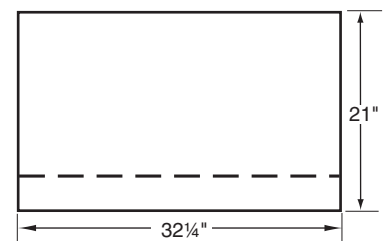
- Three Phase Control Panel (required) - Built-in or Remote Mounted NEMA 4/12

Activation device (required) options:

- Plunger, roller arm, whisker arm or heavy duty door switch(es)
- On/Off switches



www.berner.com
111 Progress Avenue
New Castle, PA 16101
800-245-4455 724-658-3551



F-IDC16 IDC20-December, 2018
©Copyright, 2018 Berner International Corporation



Custom Colors &
Stainless Steel Available



AIR CURTAIN Series # IDC12 / IDC14

BERNER INDUSTRIAL Direct Drive 12 & 14

- Used to keep temperatures stable and flying insects out when the doors are open.
- Engineered to perform and built to last.
- Berner is a UL Listed panel shop.

FDA recommended, USDA compliant, and AMCA certified (unheated models).

IDEAL APPLICATIONS:

Shipping & Receiving
Bus Bays
Conveyors

HEAT OPTIONS:

Electric
Steam
Hot Water
Indirect Gas

IDC12 - For mounting heights up to 12' (environmental separation) and 10' (insect control)
IDC14 - For mounting heights up to 14' (environmental separation) and 12' (insect control)

Standard Construction

- 15" high x 18" deep
- IDC12 - ½ hp single-speed motor(s) — direct drive (optional: three-speed)
- IDC14 - 1 hp single-speed motor(s) — direct drive (optional: two-speed)
- Gray powder-coated exterior with mill aluminum screen and access panels
- Wall and top mounting
- High efficiency Pro-V Nozzle
- Optional:
 - ½" polyester or aluminum filter (washable)
- Parts Warranty:
 - Ambient - Five years
 - Heated - Two years

Installation & Mounting

Simple to install, operate & maintain

- Single lengths up to 16'
- No Assembly Required
- ½" holes for wall or top mounting

Options:

- Mounting brackets available for horizontal and vertical mounting.
- Nozzle Extensions
- Tamper-resistant correctional package

Control Options

Built-in or Remote Mounted Control Panels

Control Packages for Heated Units:

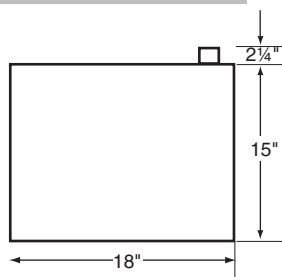
- Basic
- Deluxe

Activation device (required) options:

- Plunger, roller arm, whisker arm or heavy duty door switch(es)
- On/Off switches



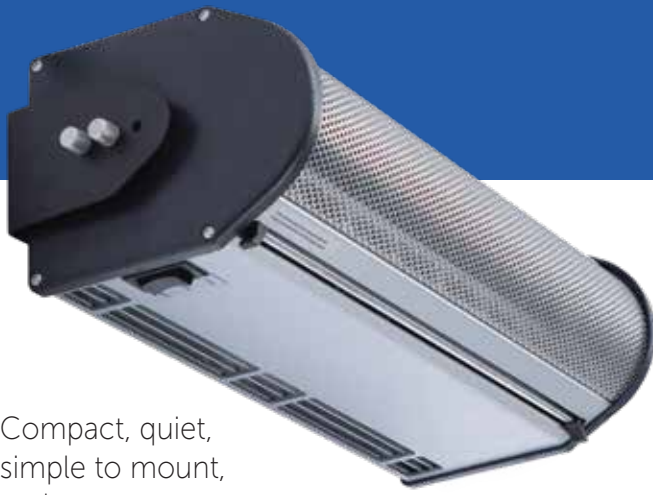
for outdoor use
ambient models only



www.berner.com
111 Progress Avenue
New Castle, PA 16101
800-245-4455 724-658-3551

F-IDC12 IDC14-December, 2018
©Copyright, 2018 Berner International

Berner Drive-Thru Unit 3 Air Curtain



Compact, quiet,
simple to mount,
and easy to operate.

AIR CURTAIN Series # DTU03

Chosen by both QSR managers and restaurant designers who are concerned with protecting the comfort of the person working the window, the Berner Drive-Thru Air Curtain is designed to meet the functional needs of the application, to integrate into the space and to keep installation costs to a minimum.*

IDEAL APPLICATIONS:

Drive-Thru Windows
Pass-Thru Windows
Concession Windows

HEAT OPTIONS:

Electric

For window heights to 5'



*OSHA identifies car exhaust as a potential health hazard to workers, especially to teenagers
https://www.osha.gov/SLTC/youth/restaurant/drivethru_carbon.html

Standard Construction

- 7" high x 7 3/4" deep
- One-speed motor(s)
- Factory installed on/off switch
- Clear satin anodized aluminum exterior cabinet
- Filter (washable)
- Parts Warranty: One Year

Installation & Mounting

Simple to install, operate & maintain

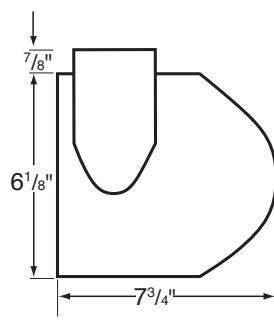
- Single lengths 18" or 26"
- No assembly required
- Factory installed "mount anywhere" bracket system
- 3 prong power cord, 6'

Control Option

- Load center box kit with magnetic reed door switch



for outdoor use
ambient models only



www.Berner.com

111 Progress Avenue, New Castle, PA 16101
800-245-4455 724-658-3551

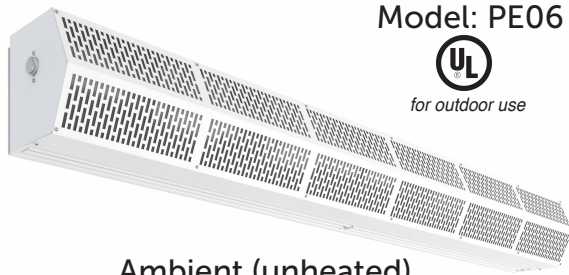


F-DTU03-May, 2021

©Copyright, 2021 Berner International Corporation

Berner Pass-Thru 6 Air Curtain

Recommended for mounting heights up to 6' (environmental separation & insect control)
Meets NSF velocity requirement of 600 fpm at the counter for insect control



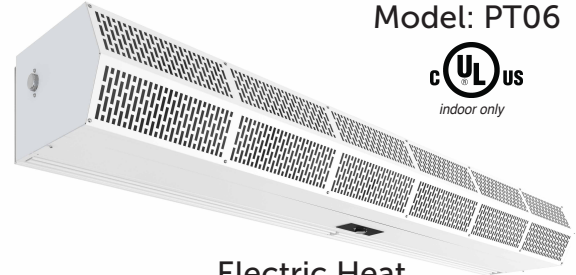
Model: PE06



Ambient (unheated)

Indoor / Outdoor Mounting

A more compact unit that protects the motor(s) from rain and snow



Model: PT06



Electric Heat

Indoor Mounting

Deeper design to accommodate heating elements & controls

Standard Construction

- 8½" high x 8½" deep
- 1/5 hp variable speed motor(s)
- Remote mounted rheostat variable speed switch - order separately
- White or black powder coated exterior
(Optional: Custom Color or Stainless)
- Wall & Top Mounting
- Optional: Filter (washable)
- Parts Warranty: Five Years

Standard Construction

- 8½" high x 13½" deep
- 1/5 hp variable speed motor(s)
- Factory installed rheostat variable speed switch
- White or black powder coated exterior
(Optional: Custom Color or Stainless)
- Wall & Top Mounting
- Optional: Filter (washable)
- Parts Warranty: Two Years

Installation & Mounting

Simple to install, operate & maintain

- Single lengths 25" to 120"
- No assembly required

Installation & Mounting

Simple to install, operate & maintain

- Single lengths 25" to 120"
- No assembly required

Control Options

- Remote Mounted Rheostat Variable Speed Switch - Indoor Mounting only
- NEMA 1 Plunger or Roller Door Switch
- NEMA 4 Magnetic Reed Switch

Control Options

- Basic Control Package
- Remote Mounted Rheostat Variable Speed Switch - Indoor Mounting only



for outdoor use



indoor only



www.Berner.com
111 Progress Avenue, New Castle, PA 16101
800-245-4455 724-658-3551





Custom Colors &
Stainless Steel Available

BERNER

SANITATION CERTIFIED

High Performance 7

EPH Listed per NSF 37

Chosen by restaurants and kitchen designers who are concerned with meeting food service standards, health department requirements, and their own criteria for flying insect control when the door is open.

IDEAL APPLICATIONS:

Kitchen / Employee Service Doors

AIR CURTAIN Series # SHD07

For mounting heights up to 7' (insect control)

Standard Construction

- EPH Listed per NSF 37
- 14" high x 15" deep
- ¾ hp single speed motor(s)
- White or black aluminum exterior cover
- Wall and top mounting
- Parts Warranty:
Ambient - Five years

Installation & Mounting

Simple to install, operate & maintain

- Single lengths up to 10'
- No Assembly Required
- 1/4" keyhole slots for wall mounting
- 5/16" threaded inserts for top mounting

Optional: Wall mounting plate

Control Options

Activation device (required) options:

- door switch
- on/off switch

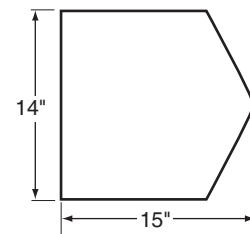
Control Packages:

- Basic
- Deluxe

Building Automation & Door Controller versions available.



Air Curtain Fans for ANSI/NSF37
Customer Entry maximum
mounting height is 7'



www.berner.com
111 Progress Avenue
New Castle, PA 16101
800-245-4455 724-658-3551

Berner Sanitation Certified Low Profile 7 Air Curtain



Custom Colors &
Stainless Steel Available

Low profile air curtain at 8.5" high

AIR CURTAIN Series # SLC07

EPH Listed per NSF 37

Chosen by restaurants and kitchen designers who are concerned with meeting food service standards, health department requirements, and their own criteria for flying insect control when the door is open.

IDEAL APPLICATIONS:

Kitchen / Employee Service Doors
Shopping Carts
Concessions / Drive-Thrus

For mounting heights up to 7' (insect control)

Standard Construction

- EPH Listed per NSF 37
- 8 ½" high x 8 ½" deep
- 1/5 hp single speed motor(s)
- White or black powder coated exterior
- Wall & Top Mounting
- Parts Warranty:
Ambient - Five years

Installation & Mounting

Simple to install, operate & maintain

- Single lengths up to 10'
- No Assembly Required
- Wall plate included
- 1/4" threaded inserts for top mounting
- Slotted air inlet screen (removable for maintenance)

Control Options

Activation device (required) options:

- door switch
- on/off switch

Control Packages:

- Basic
- Deluxe
- Walk-in Cooler Kit

Building Automation & Door Controller versions available.



Air Curtain Fans for ANSI/NSF37
Customer Entry maximum
mounting height is 7'

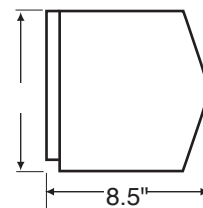


for outdoor use



www.Berner.com

111 Progress Avenue, New Castle, PA 16101
800-245-4455 724-658-3551



Berner Commercial High Performance 10 Air Curtain



Custom Colors &
Stainless Steel Available

AIR CURTAIN Series # CHD10

Designed to meet the functional needs of the application and to integrate into the space.

AMCA Certified ambient & heated models

Meets 2015 IECC Building Code which added AMCA Certified air curtains as an exception to a vestibule.

IDEAL APPLICATIONS:

Service / Employee Doors
Main Entrances
Conveyors
Shipping & Receiving

HEAT OPTIONS:

Electric

Tamper Resistant Correctional Package Available

For mounting heights up to 10' (environmental separation) and 8' (insect control)

Standard Construction

- 14" high x 15" deep
- ½ hp three-speed motor(s)
- Factory installed fan speed switch
- White or black aluminum exterior cover
- Wall and top mounting
- Optional:
3/8" aluminum filter (washable)
- Parts Warranty:
Ambient - Five years
Heated - Two years

Installation & Mounting

Simple to install, operate & maintain

- Single lengths up to 10'
- No Assembly Required
- 1/4" keyhole slots for wall mounting
- 5/16" threaded inserts for top mounting

Optional: Wall mounting plate

Control Options

Control Packages:

- Basic
- Deluxe
- Comfort Plus – heated units only

Berner PureAir Package™

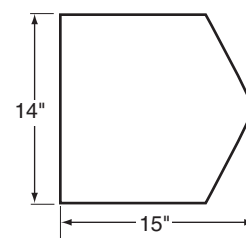
- MERV 8 filter (washable)
- Needlepoint Bipolar Ionization (NPBI) technology

Building Automation & Door Controller versions available.



www.Berner.com

111 Progress Avenue, New Castle, PA 16101
800-245-4455 724-658-3551





Custom Colors &
Stainless Steel Available

Low profile air curtain at 8.5" high

AIR CURTAIN Series # CLC08

BERNER COMMERCIAL Low Profile 8

*Designed to meet the functional needs of the application
and to integrate into the space.*

IDEAL APPLICATIONS:

Service / Employee Doors
Main Entrances
Concessions / Drive-Thrus
Shopping Carts
Walk-in Coolers

HEAT OPTIONS:

Electric
Steam
Hot Water

For mounting heights up to 8' (environmental separation) and 7' (insect control)

Standard Construction

- 8 1/2" high x 13 1/2" deep
- 1/5 hp two speed motor(s)
- Factory installed fan speed switch
- White or black powder coated exterior
- Wall & Top Mounting
- Optional:
1" aluminum filter (washable)
- Parts Warranty:
Ambient - Five years
Heated - Two years

Installation & Mounting

Simple to install, operate & maintain

- Single lengths up to 10'
- No Assembly Required
- Wall plate included
- 1/4" threaded inserts for top mounting
- Bottom access panel for easy access to internal components

Control Options

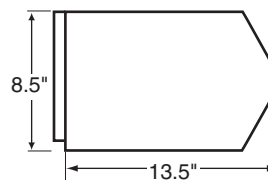
Control Packages:

- Basic
- Deluxe

Building Automation & Door Controller versions available.

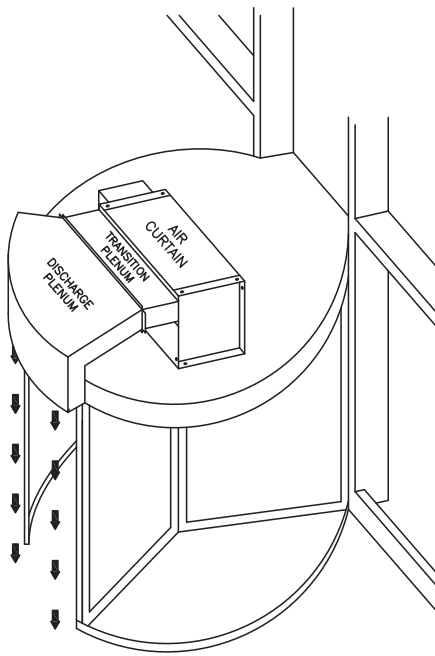


www.berner.com
111 Progress Avenue
New Castle, PA 16101
800-245-4455 724-658-3551



The Berner RevolvAir™

Air Curtain System for Revolving Doors



- Concealed or Exposed systems
- Modular pre-fitted field assembly
- Simple to install, operate and maintain

Benefits:

- Exterior temperatures, odors & fumes kept out of the lobby
- HVAC operational costs reduced
- Occupant comfort maintained

IDEAL APPLICATIONS:

Main Entrances
Lobbies

HEAT OPTIONS:

Electric
Steam
Hot Water

Custom Colors, Stainless Steel (Grade 304 or better)
Aluminum & other finishes available

DISCHARGE & TRANSITION PLENUM: Modular, pre-fitted construction

- Sized according to revolving door radius & opening width
- Sky white powder coated exterior
- Aluminum airfoil vanes for smooth air flow

Sold Separately:

- Customized trim packages
- Exit sign, red or green LED lettering

Controls

Factory installed Intelliswitch™ digital controller:

- Low voltage circuit for unit activation (BMS)
- Time delay
- External thermostat provision
- RoHS compliant
- Temperature Probe (heated units only)
- Remote Display

Sold Separately:

- Wi-Fi Controller, works with the Berner App
- Handheld Remote Control

Installation & Mounting

Simple to install, operate & maintain

- Air Curtain – no assembly required
- Discharge & Transition Plenum – Modular, pre-fitted construction
- Structural support field provided by others

AIR CURTAIN Standard Construction

- 18" high x 15" deep
- ½ hp motor(s) – direct drive, ten fan speeds
- Factory mounted UL listed control panel
- Sky white powder coated exterior, screen, and access panels
- UL Listed

Parts Warranty:

Ambient - Five years, Heated - Two years



the Berner App!
Order the Wi-Fi Controller
to control and monitor
from your smart phone!



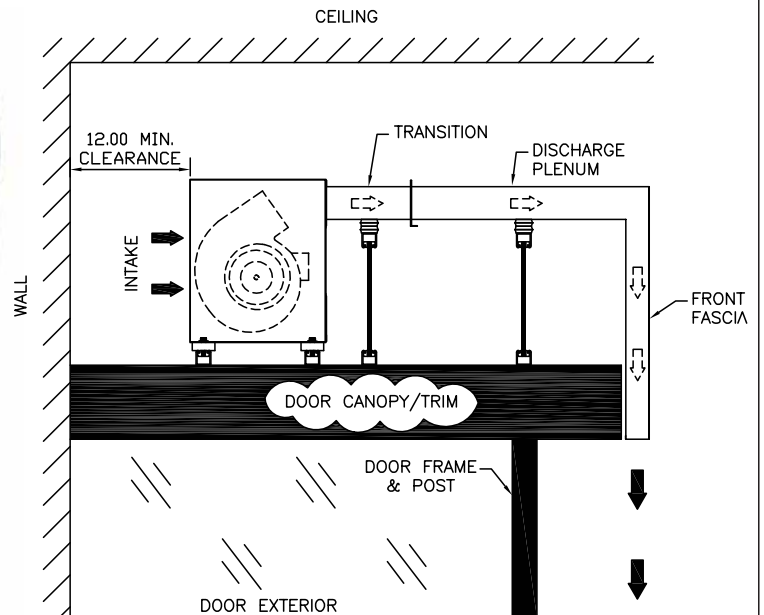
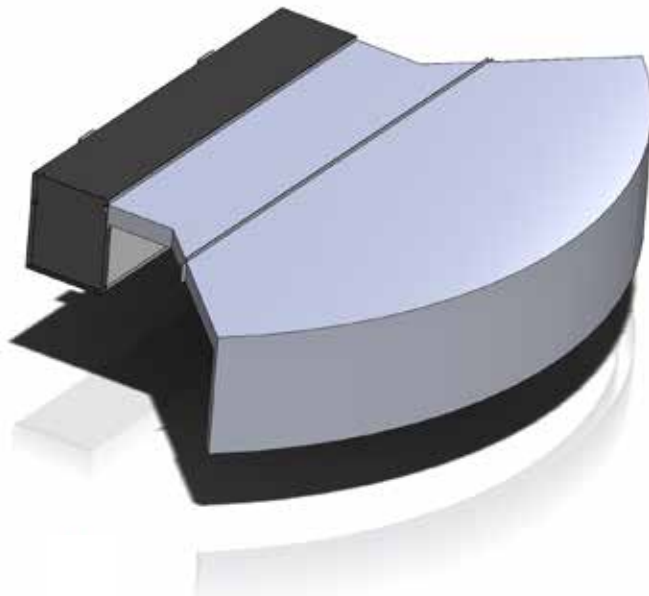
www.Berner.com

How it Works to Keep the Lobby Comfortable:

The revolving door acts as an air lock, bringing people, but also bringing outside temperatures and fumes into the lobby. When outdoor temperatures are extreme, such as in Winter, the entrance of cold air is quite noticeable.

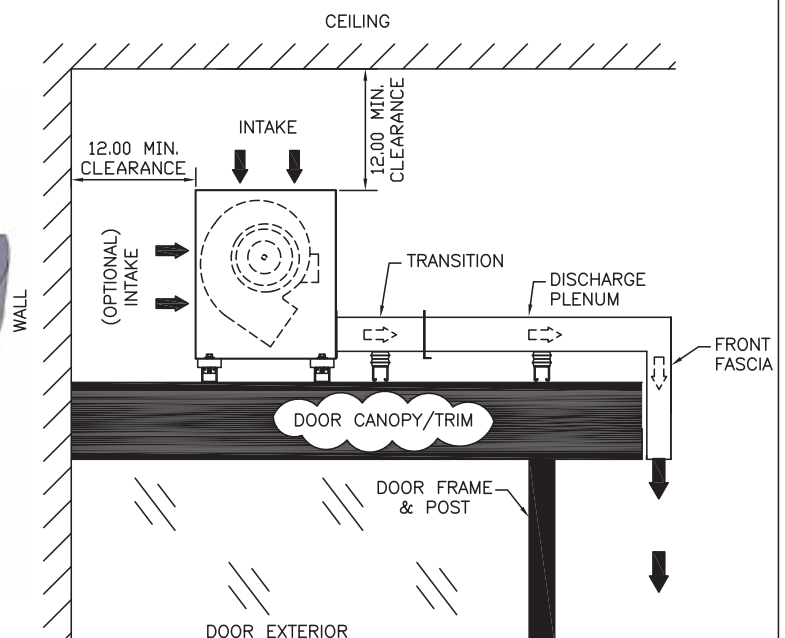
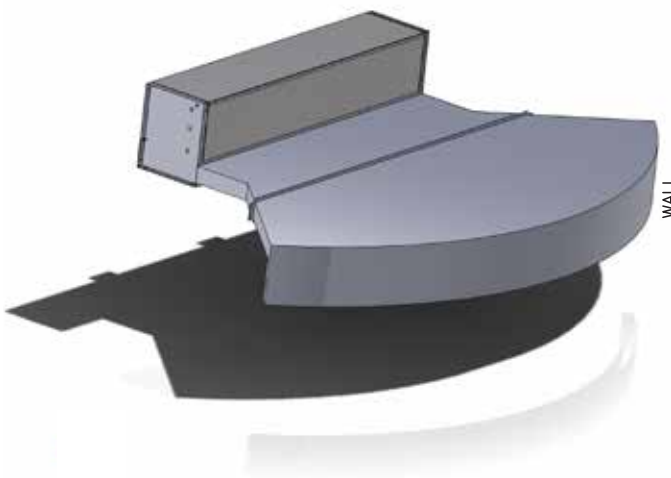
Mounted over the revolving door, on the interior of the building, the air curtain system provides a low unobtrusive curtain of air across the door opening that keeps the unwanted outside air trapped within the door chambers as they rotate past the lobby.

CONCEALED SYSTEM



Berner offers customized aesthetically pleasing trim packages.

EXPOSED SYSTEM



Berner Architectural Recessed 12 & 16 Air Curtains



Custom Colors &
Stainless Steel Available

Requires a minimum of 15" clearance above the ceiling

AIR CURTAIN Series #ARD12 / #ARC16

Chosen by designers who are concerned with both aesthetics and protecting the intent of the space when the door is open.

Used at entrances to enhance or replace a vestibule to save energy and maintain comfortable interiors.

ARD12 - AMCA Certified and meets Building Code:

ASHRAE 90.1-2019, ASHRAE 189.1, and IECC-2015, allow AMCA Certified Air Curtains as an exception to a vestibule.

IDEAL APPLICATIONS:

Main Entrances
Lobbies

HEAT OPTIONS:

Electric
Steam
Hot Water

ARD12 - For mounting heights up to 12' (environmental separation) and 10' (insect control)
ARC16 - For mounting heights up to 16' (environmental separation) and 14' (insect control)

Standard Construction

- 15" high x 26" deep
- ARD12 - ½ hp motor(s) - ten speeds
- ARC16 - 1 hp motor(s) - two speeds
- Factory installed Intelliswitch™ digital controller
- White aluminum exterior panel
- Top mounting only
- High efficiency, low noise Pro-V Nozzle
- Parts Warranty:
 - Ambient - Five years
 - Heated - Two years



for indoor use



Installation & Mounting

Simple to install, operate & maintain

- Single lengths up to 12'
- No Assembly Required
- 5/16" threaded inserts for top mounting
- Hinged bottom panel for easy access to internal components

Control Options

Factory installed Intelliswitch™ digital controller:

- LED clock display
- Low voltage circuit for unit activation (BMS)
- External thermostat provision
- Comfort Plus provision
- RoHS compliant
- Temperature Probe (heated units only)

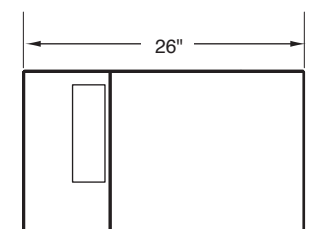
Sold Separately:

- **Berner AIR™** - Smart controller & app, includes BACnet & weather-based adaptive setting
- Activation device: magnetic door switch



www.Berner.com

111 Progress Avenue, New Castle, PA 16101
800-245-4455 724-658-3551



Berner Architectural High Performance 10 Air Curtain



Chosen by designers who are concerned with both aesthetics and protecting the intent of the space when the door is open.

Used at entrances to enhance or replace a vestibule to save energy and maintain comfortable interiors.

AMCA Certified and meets Building Code:

ASHRAE 90.1-2019, ASHRAE 189.1, and IECC-2015, allow AMCA Certified Air Curtains as an exception to a vestibule.

IDEAL APPLICATIONS:

Main Entrances
Lobbies

AMCA Certified HEAT OPTIONS:

Electric
Steam
Hot Water

Custom Colors &
Bronze Anodized & Stainless Steel Available

AIR CURTAIN Series # AHD10

For mounting heights up to 10' (environmental separation) and 8' (insect control)

Standard Construction

- 12 1/4" high x 21 1/4" deep
- 1/2 hp motor(s) - ten speeds
- Factory installed Intelliswitch™ digital controller
- Clear satin anodized aluminum exterior
- Wall and top mounting
- High efficiency, low noise Pro-V Nozzle
- Optional: 1" aluminum filter (washable)
- Parts Warranty:
Ambient - Five years
Heated - Two years

Installation & Mounting

Simple to install, operate & maintain

- Single lengths up to 10'
- No Assembly Required
- Wall plate included
- 5/16" threaded inserts for top mounting
- Bottom access panel for easy access to internal components

Control Options

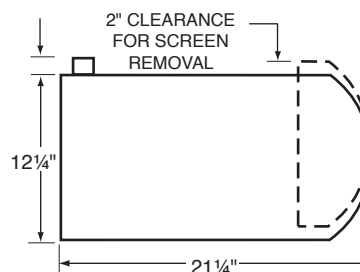
Factory installed

Intelliswitch™ digital controller:

- LED clock display
- Low voltage circuit for unit activation (BMS)
- External thermostat provision
- Comfort Plus provision
- RoHS compliant
- Temperature Probe (heated units only)

Sold Separately:

- **Berner AIR™** - Smart controller & app, includes BACnet & weather-based adaptive setting
- **Berner PureAir Package™**
 - MERV 8 filter (washable)
 - Needlepoint Bipolar Ionization (NPBI) technology
 - 1/2 hp EC motor(s) - ten speeds
 - Intelliswitch with the PURE mode
- Activation device: magnetic door switch



www.Berner.com

111 Progress Avenue, New Castle, PA 16101
800-245-4455 724-658-3551



Berner Architectural Low Profile 8 Air Curtain



Chosen by designers who are concerned with both aesthetics and protecting the intent of the space when the door is open.

Used at entrances to enhance or replace a vestibule to save energy and maintain comfortable interiors.

Lowest profile air curtain at 7.5" high

Custom Colors &

Bronze Anodized & Stainless Steel Available

AIR CURTAIN Series # ALC08

IDEAL APPLICATIONS:

Main Entrances

Lobbies

Indoor / Outdoor Bars

HEAT OPTIONS:

Electric

Steam

Hot Water

For mounting heights up to 8' (environmental separation) and 7' (insect control)

Standard Construction

- 7 1/2" high x 13 3/4" deep
- 1/5 hp motor(s) - ten speeds
- Factory installed Intelliswitch™ digital controller
- Clear satin anodized aluminum exterior
- Wall & top mounting
- High efficiency, low noise Pro-V Nozzle
- Optional: 1" aluminum filter (washable)
- Parts Warranty:
 - Ambient - Five years
 - Heated - Two years

Installation & Mounting

Simple to install, operate & maintain

- Single lengths up to 10'
- No Assembly Required
- Wall plate included
- 1/4" threaded inserts for top mounting
- Bottom access panel for easy access to internal components

Options for glass transoms:

- Decorative Rear Adaptor
- Transom Mounting Bracket

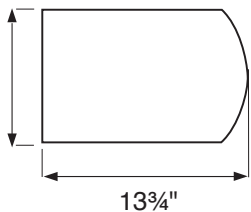
Control Options

Factory installed Intelliswitch™ digital controller:

- LED clock display
- Low voltage circuit for unit activation (BMS)
- External thermostat provision
- Comfort Plus provision
- RoHS compliant
- Temperature Probe (heated units only)

Sold Separately:

- Berner AIR™ - Smart controller & app, includes BACnet & weather-based adaptive setting
- Activation device: magnetic door switch



www.Berner.com

111 Progress Avenue, New Castle, PA 16101

800-245-4455 724-658-3551



F-ALC08 March, 2022 ©Copyright, 2022 Berner International



Model: AC10
For mounting
heights up to 10'



Model: AC08
For mounting
heights up to 8'

Patented Design

THE ARCHITECTURAL CONTOUR 8 & 10

Keeping main entrance applications in mind,
Berner's Architectural Air Curtains:

- Are quiet, technologically advanced, and beautifully designed
- Meet the vestibule exception in ASHRAE 90.1-2019 and other energy codes
- Save energy and support healthy, comfortable environments

Standard Construction

Choose from ambient, electric or hot water heat

- Top air intake
- Intelliswitch™ digital controller - ten speeds
- Cabinet: Clear satin anodized aluminum exterior (Optional: Custom Color or Stainless)
- Wall or Top Mounting
- High efficiency, low noise articulating Pro-V Nozzle
- Filter (washable)
- Parts Warranty:
Ambient - Five years; Heated - Two years

Architectural Contour 8:

- Single lengths up to 10'
- 1/5 hp AC motor(s) (optional: EC motor(s))

Architectural Contour 10:

- Single lengths up to 12'
- 1/2 hp AC motor(s) (optional: EC motor(s))



**AMCA Certified, all heat options,
and meets Building Codes:**

ASHRAE 90.1-2019, ASHRAE 189.1, and IECC-2015, allow
AMCA Certified Air Curtains as an exception to a vestibule.

pending

Built on Berner's strong engineering foundation, these air curtains save energy and protect the interior when the door is open and can be used with or instead of a vestibule.



pending



Installation & Mounting

Simple to install, operate & maintain

- No assembly required
- Wall mounting brackets included
- 1/4" threaded inserts for top mounting
- Bottom access panel for easy access to internal components

Options for glass transoms:

- Rear cover for top mounting to conceal fasteners

Controls

Factory installed Intelliswitch™ digital controller:

- LED clock display
- Low voltage circuit for unit activation (BMS)
- External thermostat provision
- Comfort Plus provision
- RoHS compliant
- Temperature Probe (heated units only)

Sold Separately:



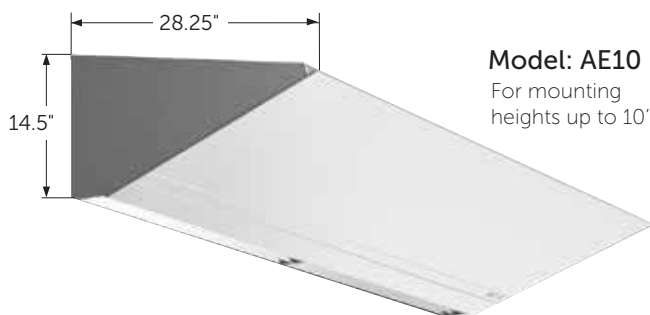
**Berner AIR™
Smart controller & app,**
includes BACnet & weather-based
adaptive setting

- Touchscreen, Wall Mounted Tablet
- Activation device: magnetic door switch

www.Berner.com

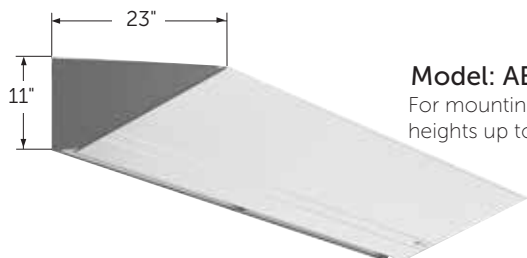
111 Progress Avenue, New Castle, PA 16101
800-245-4455 724-658-3551





Model: AE10

For mounting heights up to 10'



Model: AE08

For mounting heights up to 8'

THE ARCHITECTURAL ELITE 8 & 10

These air curtains are the perfect solution when aesthetics matter. They are designed for those who are looking for a seamless integration of beauty, function and performance.

Built on Berner's strong engineering foundation, these air curtains save energy and protect the interior when the door is open.

Standard Construction

- Top air intake
- Intelliswitch™ digital controller - ten speeds
- Berner AIR™: Wireless Controller and App
- Cabinet: Stainless Steel, Grade 304 or better
- Bottom Panel: Clear satin anodized aluminum (Optional: White Aluminum, Custom Color or Stainless)
- Wall or Top Mounting
- High efficiency, low noise articulating Pro-V Nozzle
- Filter (washable)
- Parts Warranty: Ambient - Five years; Heated - Two years

Architectural Elite 8:

- Single lengths up to 10'
- 1/5 hp EC motor(s)

Architectural Elite 10:

- Single lengths up to 12'
- 1/2 hp EC motor(s)



Vestibule Exception:

ASHRAE 90.1-2019, ASHRAE 189.1, and IECC-2015, allow AMCA Certified Air Curtains as an exception to a vestibule.

Installation & Mounting

Simple to install, operate & maintain

- No Assembly Required
- Wall mounting brackets included
- 1/4" threaded inserts for top mounting
- Bottom access panel for easy access to internal components

Options for glass transoms:

- Rear cover for top mounting to conceal fasteners

Controls



Outfitted with the Berner AIR™

Smart controller & app, includes BACnet & weather-based adaptive setting

Factory installed Intelliswitch™ digital controller:

- LED clock display
- Low voltage circuit for unit activation (BMS)
- External thermostat provision
- Comfort Plus provision
- RoHS compliant
- Temperature Probe (heated units only)

Sold Separately:

- Touchscreen, Wall Mounted Tablet
- Activation device: magnetic door switch



www.Berner.com

111 Progress Avenue, New Castle, PA 16101
800-245-4455 724-658-3551

