



GRAFICA

Volume 17 Issue 4 Winter 2026

Upcoming Events

**3rd Thursday
Artful Conversation
5:30 to 7:30 pm**

**Our line up is on page 2.
Get them on your calendar
now!**

Details on page two

**January 15
Kalika Rose will talk about
"From Vision to Funding:
Building a Grant-Fueled
Art Series"**

**February 19
Betsy Sampson on
Making Marbled Paper**

See page two for more!

Featured Artist

Michelle Spencer



"Day Break on Mingo"

Michelle Spencer appeared on our radar during the show we hosted for the St. Louis Pastel Artists. Her painting "Day Break at Mingo" won Best of Show from juror, Robin Hirsch-Steinhoff. It was an incredibly beautiful show — and Michelle's work stood out even in a room full of gorgeous art.

Julie Dunn-Morton, Curator of Fine Art for the St. Louis Mercantile Library, purchased "Day Break at Mingo" for the library's collection.



GRAFICA

FINE ART GALLERY & CUSTOM FRAMING
FINE ART PRINTING & PHOTO RESTORATION

7884 Big Bend Blvd.
Webster Groves, MO 63119
(314) 961-4020

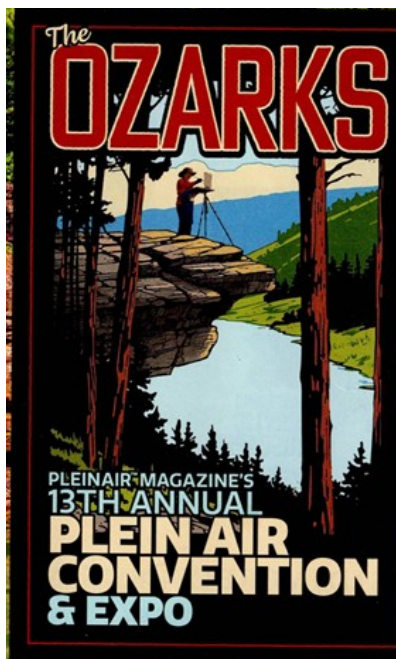
Email: grafica@graficafinearts.com
Website: www.graficafinearts.com

**Owners: Lary & Lynn Bozzay
Picture Framer: Shana Kotovsky, CPF**

**Hours: Tues-Fri 10 am to 5:30 pm
Sat. 11 am to 3pm
or by appointment**

On Big Bend in the Old Orchard Business
District of Webster Groves -- between
Murdoch and Laclede Station Road

Masthead art from Ralf Broughton's "Oz"



May 14-18, 2026

For over 12 years, the Plein Air Convention and Expo has inspired thousands of outdoor painters to learn and grow with people who share their passion. In 2026, we're coming to the spectacular Ozark Mountains near Branson, Missouri.

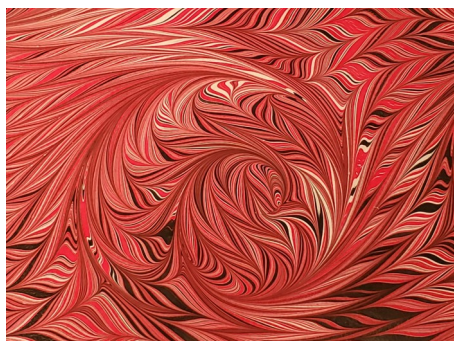
BOOK NOW!

<https://pleinairconvention.com/>

Or

Call 561-655-8778

Upcoming 3rd Thursday Speakers:



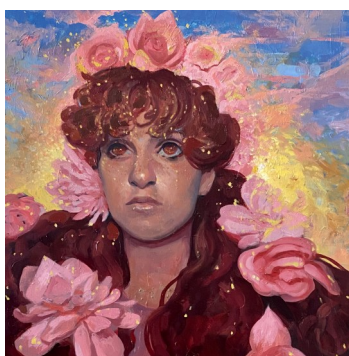
February 19

Making Marbled Papers

Betsy Sampson

March 19

Preparing for a
Solo Show
Mel Tychonievich



April 19

Watercolor on
Yupo Paper Demo!

Nancy Avdoian

May 21

Connecting
Patients with
Nature

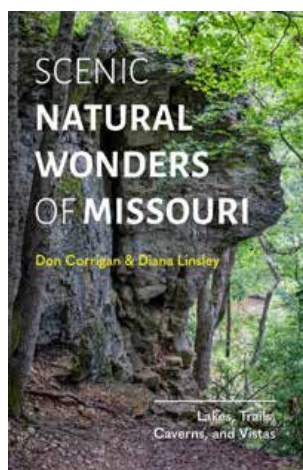
Erin Blumer



June 18

*New Book full of photos of
terrific plein air painting
locations in Missouri*

**Don Corrigan &
Diana Linsley**



CORRECTION!!

November 19

Get it on your calendar now!

A Demo!

Lon Brauer



**The rest of the 2026
dates:**

**July 16
September 17
October 15
November 19
December 17**



I was born and raised in Jefferson County Missouri. When it comes to art I have always known I wanted to be an artist. My mother was an artist exposing me to many different creative avenues.

After attending college. I started my career in publications and graphics. I worked in Design, Commercial Digital Photography, PrePress, Publications and Printing. Later my career took me to Houston Texas working in Content Management and Trainer of Brand Management Software Solutions

for Mitsubishi, Caterpillar, LazyBoy, Husqvarna and Pfaff and other international clients.

Retired from the corporate world, I enjoy painting landscapes, still lifes, portraits and pet portraits. I am influenced by the variety of landscapes; "Nature is my greatest inspiration. Painting outdoors connects me to nature; I am passionate about plein air and love getting lost in the wonderful process." Capturing the light, color, and the atmosphere is what I strive to depict.

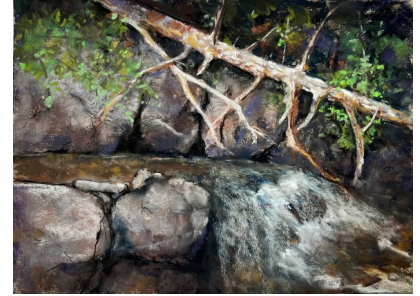


"Summer Symphony"

I always have a sketchbook book, a box of pastels and a watercolor kit in my car. "I never know what will speak to me, I can pull over and capture the moment." Many of my paintings depict scenes from the Midwest.

Currently I volunteer for Gateway Pastel Society of St. Louis and Heartland Arts Steering Committee in Kirkwood Missouri.

I am an Active Member Pastel Society of America, Gateway Pastel Society, Red Rock Pastel Society in Las Vegas and St. Genevieve Art Guild.



"Pickel Springs"

I have participated in many different gallery shows in St. Louis, Cape Girardeau, Chicago, Las Vegas, Tucson and Baltimore.



Michelle Spencer

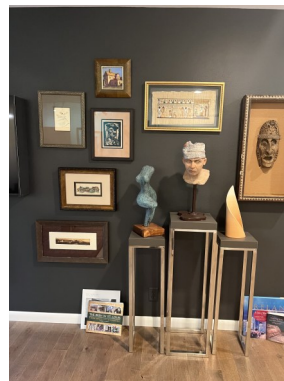
To see more of Michelle's artwork, click the links below:

[https:// http://www.artstegen.org/michelle-spencer.html](https://http://www.artstegen.org/michelle-spencer.html)www.michellespencerart.com/
<https://www.facebook.com/PaintLadyMO/>
<http://www.artstegen.org/michelle-spencer.html>
<https://www.instagram.com/paintladymo/>

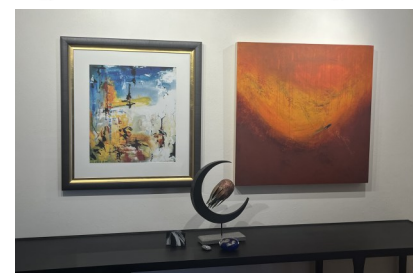
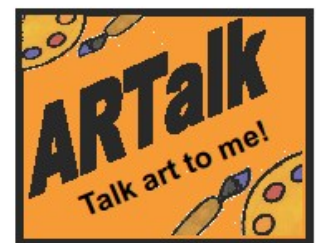
Art "Collections"

I'm going to paraphrase a quote from Faith Berger's article in Ladue News recently. "Collecting (art) isn't just about decoration—it's about connection. When your home reflects the cultures and stories that move you, it becomes more than a space. It becomes a living breathing reflection of your journey."

The next piece of art we add to the walls of our home will be from Portugal.



All these pieces are either from local artists or our travels.



FINE ART GALLERY & CUSTOM FRAMING
FINE ART PRINTING & PHOTO RESTORATION

7884 Big Bend Blvd., Webster Groves, MO
63119
(314) 961-4020

Email: grafica@graficafinearts.com

Hours: Tues-Fri 10 am to 5:30 pm
Sat 11 am to 3 pm
Or by appointment

Eastbound Hwy 44 :
Laclede Station Road-Murdoch exit
282 / right off exit / right on Murdoch /
right on Big Bend / we'll be on the right.

Westbound Hwy 44:
Shrewsbury exit 283—left to Big Bend,
turn left / cross Laclede Station Road /
we'll be on the left

Westbound Hwy 40:
Big Bend exit 33A— go left for just
over 2 miles. We'll be on your left just
past the light at Laclede Station Road.

Eastbound Hwy 40:
Hanley exit 31B south for just over 2
miles — right on Big Bend . We're on
the left. (NOTE: Hanley becomes La-
clede Station Road.)



"Setting Sun"



"Rusted Relic"



"In the Shallows"



"Daybreak on the River"



"Shades of Winter"



"Shades of Winter"



"Full Moon Over Mingo"



"Road to Milts Place"

**Featured
Artist**

Michelle Spencer