



# GRAFICA

Volume 17 Issue 4 Winter 2026

## Upcoming Events

**3rd Thursday  
Artful Conversation  
5:30 to 7:30 pm**

**Our line up is on page 2.  
Get them on your calendar  
now!**

**Details on page two**

**January 15  
Kalika Rose will talk about  
"From Vision to Funding:  
Building a Grant-Fueled  
Art Series"**

**February 19  
Betsy Sampson on  
Making Marbled Paper**

**See page two for more!**

## Featured Artist

## Michelle Spencer



"Day Break on Mingo"

**M**ichelle Spencer appeared on our radar during the show we hosted for the St. Louis Pastel Artists. Her painting "Day Break at Mingo" won Best of Show from juror, Robin Hirsch-Steinhoff. It was an incredibly beautiful show — and Michelle's work stood out even in a room full of gorgeous art.

Julie Dunn-Morton, Curator of Fine Art for the St. Louis Mercantile Library, purchased "Day Break at Mingo" for the library's collection.



GRAFICA

FINE ART GALLERY & CUSTOM FRAMING  
FINE ART PRINTING & PHOTO RESTORATION

7884 Big Bend Blvd.  
Webster Groves, MO 63119  
(314) 961-4020

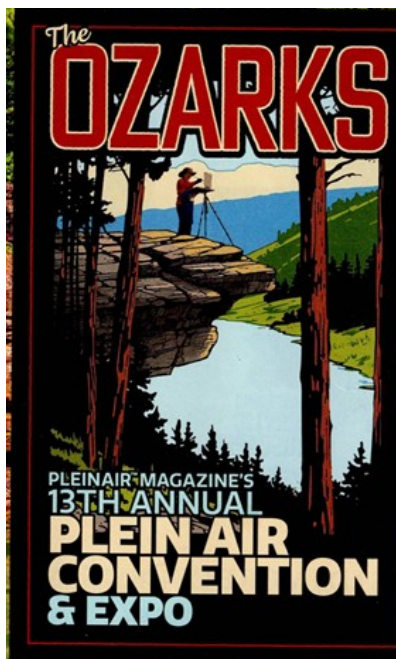
Email: [grafica@graficafinearts.com](mailto:grafica@graficafinearts.com)  
Website: [www.graficafinearts.com](http://www.graficafinearts.com)

Owners: Lary & Lynn Bozzay  
Picture Framer: Shana Kotovsky, CPF

Hours: Tues-Fri 10 am to 5:30 pm  
Sat. 11 am to 3pm  
or by appointment

On Big Bend in the Old Orchard Business  
District of Webster Groves -- between  
Murdoch and Laclede Station Road

Masthead art from Ralf Broughton's "Oz"



## May 14-18, 2026

For over 12 years, the Plein Air Convention and Expo has inspired thousands of outdoor painters to learn and grow with people who share their passion. In 2026, we're coming to the spectacular Ozark Mountains near Branson, Missouri.

**BOOK NOW!**

<https://pleinairconvention.com/>

Or

Call 561-655-8778

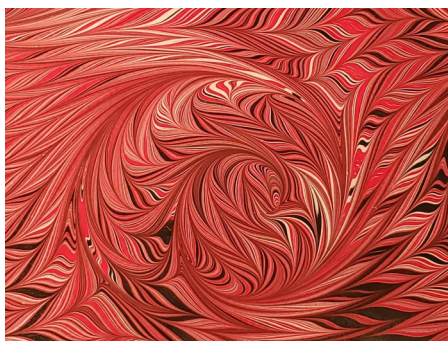


## Upcoming 3rd Thursday Speakers:

**January 15**

**"From Vision to Funding:  
Building a Grant-Fueled  
Art Series"**

**Kalika Rose**



**February 19**

**Making Marbled Papers**

**Betsy Sampson**

**March 19**  
**Suggest a topic or  
speaker!!**

**April 19**  
**Watercolor on  
Yupo Paper **Demo!****

**Nancy Avdoian**



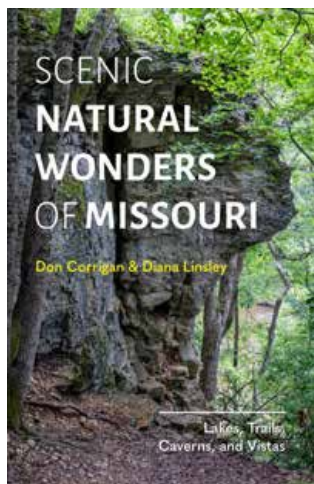
**May 21**  
**Connecting  
Patients With Art  
**Erin Blumer****



**June 18**

*New Book full of photos of  
terrific plein air painting  
locations in Missouri*

**Don Corrigan &  
Diana Linsley**



**August 20**  
*Get it on your calendar now!*

**A Demo!**  
**Lon Brauer**



One of my favorite "Lon's"

**The rest of the 2026  
dates:**

**July 16  
September 17  
October 15  
November 19  
December 17**







**I** was born and raised in Jefferson County Missouri. When it comes to art I have always known I wanted to be an artist. My mother was an artist exposing me to many different creative avenues.

After attending college. I started my career in publications and graphics. I worked in Design, Commercial Digital Photography, PrePress, Publications and Printing. Later my career took me to Houston Texas working in Content Management and Trainer of Brand Management Software Solutions

for Mitsubishi, Caterpillar, LazyBoy, Husqvarna and Pfaff and other international clients.

Retired from the corporate world, I enjoy painting landscapes, still lifes, portraits and pet portraits. I am influenced by the variety of landscapes; "Nature is my greatest inspiration. Painting outdoors connects me to nature; I am passionate about plein air and love getting lost in the wonderful process." Capturing the light, color, and the atmosphere is what I strive to depict.

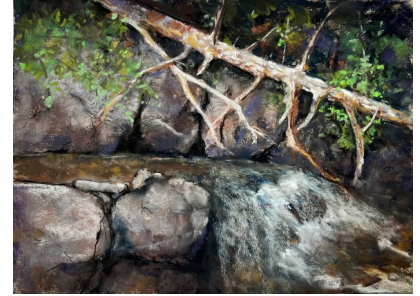


"Summer Symphony"

I always have a sketchbook book, a box of pastels and a watercolor kit in my car. "I never know what will speak to me, I can pull over and capture the moment." Many of my paintings depict scenes from the Midwest.

Currently I volunteer for Gateway Pastel Society of St. Louis and Heartland Arts Steering Committee in Kirkwood Missouri.

I am an Active Member Pastel Society of America, Gateway Pastel Society, Red Rock Pastel Society in Las Vegas and St. Genevieve Art Guild.



"Pickel Springs"

I have participated in many different gallery shows in St. Louis, Cape Girardeau, Chicago, Las Vegas, Tucson and Baltimore.



Michelle Spencer

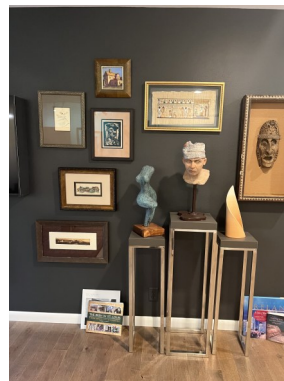
To see more of Michelle's artwork, click the links below:

[https:// http://www.artstegen.org/michelle-spencer.html](https://http://www.artstegen.org/michelle-spencer.html)[www.michellespencerart.com/](http://www.michellespencerart.com/)  
<https://www.facebook.com/PaintLadyMO/>  
<http://www.artstegen.org/michelle-spencer.html>  
<https://www.instagram.com/paintladyimo/>

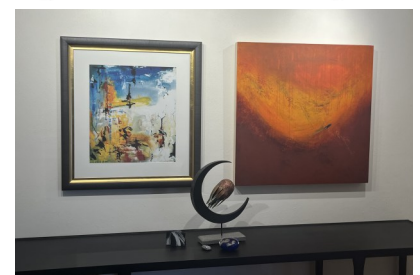
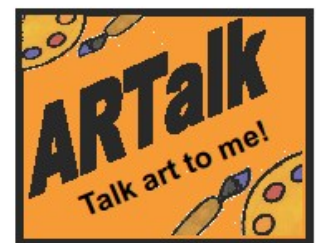
## Art "Collections"

**I**'m going to paraphrase a quote from Faith Berger's article in Ladue News recently. "Collecting (art) isn't just about decoration—it's about connection. When your home reflects the cultures and stories that move you, it becomes more than a space. It becomes a living breathing reflection of your journey."

The next piece of art we add to the walls of our home will be from Portugal.



All these pieces are either from local artists or our travels.





FINE ART GALLERY & CUSTOM FRAMING  
FINE ART PRINTING & PHOTO RESTORATION

7884 Big Bend Blvd., Webster Groves, MO  
63119  
(314) 961-4020

Email: [grafica@graficafinearts.com](mailto:grafica@graficafinearts.com)

**Hours: Tues-Fri 10 am to 5:30 pm**  
**Sat 11 am to 3 pm**  
**Or by appointment**

**Eastbound Hwy 44 :**  
Laclede Station Road-Murdoch exit  
282 / right off exit / right on Murdoch /  
right on Big Bend / we'll be on the right.

**Westbound Hwy 44:**  
Shrewsbury exit 283—left to Big Bend,  
turn left / cross Laclede Station Road /  
we'll be on the left

**Westbound Hwy 40:**  
Big Bend exit 33A— go left for just  
over 2 miles. We'll be on your left just  
past the light at Laclede Station Road.

**Eastbound Hwy 40:**  
Hanley exit 31B south for just over 2  
miles — right on Big Bend . We're on  
the left. (NOTE: Hanley becomes La-  
clede Station Road.)



"Setting Sun"



"Rusted Relic"



"In the Shallows"



"Daybreak on the River"



"Shades of Winter"



"Shades of Winter"



"Full Moon Over Mingo"



"Road to Milts Place"

**Featured  
Artist**

**Michelle Spencer**