



# GRAFICA

Volume 18 Issue 2 Spring 2026

## Upcoming Events

**3rd Thursday  
Artful Conversation  
5:30 to 7:30 pm**

**Our line up is on page 2.  
Get them on your calendar  
now!**

**April 16**

**Nancy Avdoian  
Demo!  
Watercolor on Yupo**

**May 21**

**Erin Blumer  
"Connecting Patients  
With Nature"  
For BJC  
See page two for more info!**

## Featured Artist

## Mel Tychonievich

**M**el Tychonievich appeared on our radar when they came to Grafica with fellow artist, Jane Maxfield. It always amazes me how many great artists we don't know about. Well, you don't know what you don't know—until you do!

Mel was our guest at the March 3rd Thursday. They speak with such passion and energy about their art—it just makes you want to go sign up for one of their classes at the STL Community Colleges

They have a solo show, **"Therianthrope"** opening on April 17 at The St. Louis Artists' Guild—details on page 4. Go hear them talk before the reception, if you can. The energy is contagious!



"The Narrator"

**Therianthrope**—From Ancient Greek for "wild beast" and "human" to represent a fantastical hybrid. Examples from myth, folklore, and popular culture are the minotaur, the werewolf and Donald Duck, respectively.

## GRAFICA

FINE ART GALLERY & CUSTOM FRAMING  
FINE ART PRINTING & PHOTO RESTORATION

7884 Big Bend Blvd.  
Webster Groves, MO 63119  
(314) 961-4020

Email: [grafica@graficafinearts.com](mailto:grafica@graficafinearts.com)  
Website: [www.graficafinearts.com](http://www.graficafinearts.com)

**Owners: Lary & Lynn Bozzay  
Picture Framer: Shana Kotovsky, CPF**

**Hours: Tues-Fri 10 am to 5:30 pm  
Sat. 11 am to 3pm  
or by appointment**

On Big Bend in the Old Orchard Business District of Webster Groves -- between Murdoch and Laclede Station Road

Masthead art from Ralf Broughton's "Oz"

## Webster Art Fair 2026 June 5-6-7 on the grounds of Eden Seminary



Grafica is sponsoring the Webster Arts booth at the Art Fair again this year. Stop by and say "hi". Pictured Lynn Bozzay & Jahna Kahrhoff.

# Upcoming 3rd Thursday Speakers and more

**April 19**  
Watercolor on

**Yupo Paper Demo!**

**Nancy Avdoian**



**May 21**

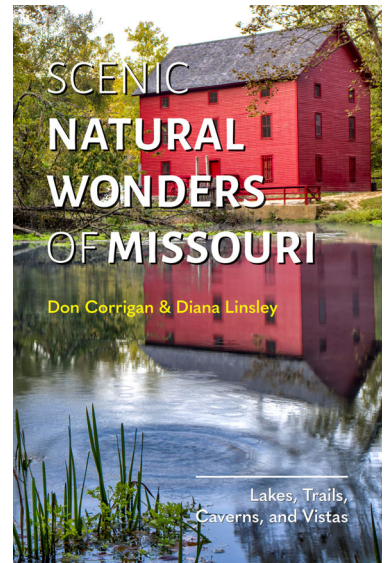
Connecting  
Patients with  
Nature

**Erin Blumer**

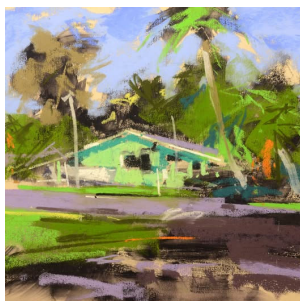
**June 18**

*New Book full of photos of  
terrific plein air painting  
locations in Missouri*

**Don Corrigan &  
Diana Linsley**



**November 19**  
*Get it on your calendar now!*  
**A Pastel Demo!**  
**Lon Brauer**

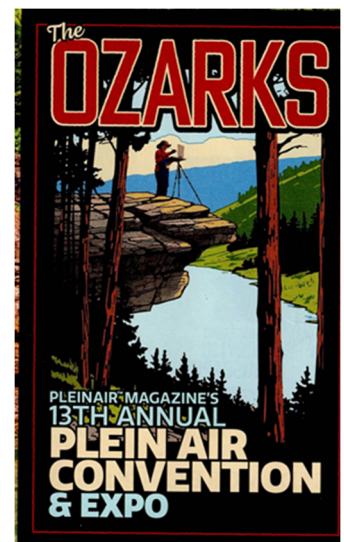


3rd Thursday audience

**May 14-18, 2026**

In 2026, we're coming to the  
spectacular Ozark Mountains  
near Branson, Missouri.  
**BOOK NOW!**

<https://pleinairconvention.com/>



**The rest of the 2026  
dates:**

- July 16**
- September 17**
- October 15**
- November 19**
- December 17**



experience. As a self-described scopophiliac—a devoted observer—the act of looking becomes both subject and method, informing life-scale oil paintings that transform personal and cultural realities into complex visual environments.

Their upcoming solo exhibition, titled *Therianthrope*, presents a body of large-scale figurative paintings that explore transformation,



“Beginnings”

identity, and perception through a surreal, psychologically immersive narrative. The work follows a young girl navigating an unstable, dreamlike landscape that reflects her internal struggle with selfhood. While grounded in perceptual realism, the paintings balance structured observation with intuitive invention, creating images that straddle the boundary

Set within an image-saturated culture shaped by artificial intelligence and digital manipulation, *Therianthrope* questions the reliability of visual truth and the stability of realism itself. Tychonievich constructs scenes that feel at

once familiar and impossible, privileging emotional truth over strict optical accuracy. Textured surfaces, floral motifs, and figurative distortions mimic the appearance of reality while subtly destabilizing recognition, allowing vulnerability, tension, and introspection to emerge.

A recurring symbol throughout the exhibition is the gray wolf, specifically the arctic wolf, which functions as a metaphor for intuition, loyalty, spirituality, and latent power. Drawing on mythological references such as the Norse figure Fenrir, the wolf becomes a vehicle for exploring repression, transformation, and becoming. As the figure’s internal conflict intensifies, it manifests physically, dissolving boundaries between body and environment and suggesting a continual state of flux.

Through a synthesis of technical precision and intuitive mark-making, Tychonievich’s work invites viewers into a space of perceptual and psychological ambiguity. *Therianthrope* ultimately asks what it means to see, to believe, and to construct identity within a contemporary world where reality itself feels increasingly unstable.



Mel Tychonievich  
<https://melissatychonievich.com/>

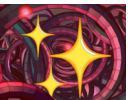
**M**el Tychonievich is a St. Louis-based painter whose work bridges rigorous perceptual observation with psychologically charged narrative-driven imagery. They received a BFA in Painting and Art History from the Kansas City Art Institute and an MFA in Painting from the University of Miami. Tychonievich has exhibited nationally, including at the H&R Block Artspace in Kansas City and the Old Courthouse Arts Center in Illinois, as well as throughout the St. Louis region. They currently teach as an Adjunct Professor of Art and Art History at St. Louis Community College and St. Charles Community College.

Rooted in the traditions of Western perceptual realism, Tychonievich’s practice combines careful observation from life with contemporary investigations into identity, sexuality, culture, and interpersonal relationships. Their work is grounded in strong draftsmanship and a deep understanding of perceptual principles, yet extends beyond direct observation into constructed, implicit narratives shaped by lived



## Emotional Truth in Art

Emotional truth in art is the honest, raw expression of an artist’s inner world, prioritizing genuine feeling over technical perfection or literal representation. It serves as a universal language that conveys vulnerability, joy, grief, or struggle, allowing viewers to feel understood and connected. This, often deemed, "authentic" art can take the form of chaotic, non-symmetrical, or "ugly" imagery, as it focuses on conveying a felt experience rather than creating something conventional and beautiful.



This is an AI Overview

FINE ART GALLERY & CUSTOM FRAMING  
FINE ART PRINTING & PHOTO RESTORATION

7884 Big Bend Blvd., Webster Groves, MO  
63119  
(314) 961-4020

Email: [grafica@graficafinearts.com](mailto:grafica@graficafinearts.com)

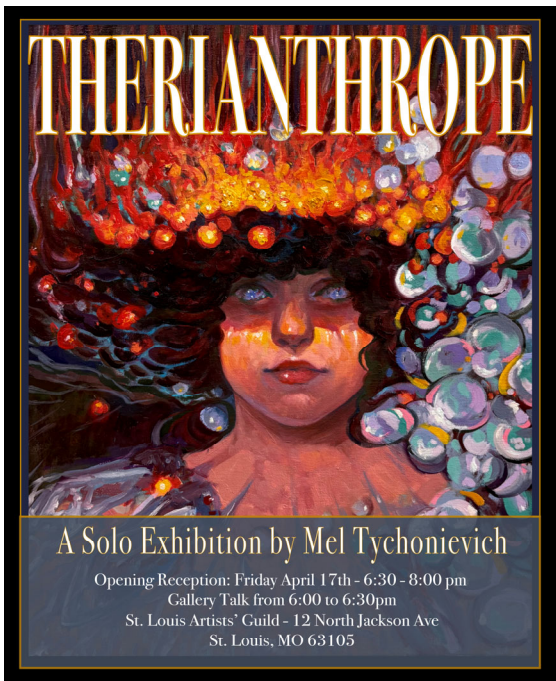
Hours: Tues-Fri 10 am to 5:30 pm  
Sat 11 am to 3 pm  
Or by appointment

**Eastbound Hwy 44 :**  
Laclede Station Road-Murdoch exit  
282 / right off exit / right on Murdoch /  
right on Big Bend / we'll be on the right.

**Westbound Hwy 44:**  
Shrewsbury exit 283—left to Big Bend,  
turn left / cross Laclede Station Road /  
we'll be on the left

**Westbound Hwy 40:**  
Big Bend exit 33A— go left for just  
over 2 miles. We'll be on your left just  
past the light at Laclede Station Road.

**Eastbound Hwy 40:**  
Hanley exit 31B south for just over 2  
miles — right on Big Bend . We're on  
the left. (NOTE: Hanley becomes La-  
clede Station Road.)



**THERIANTHROPE**

A Solo Exhibition by Mel Tychonievich

Opening Reception: Friday April 17th - 6:30 - 8:00 pm  
Gallery Talk from 6:00 to 6:30pm  
St. Louis Artists' Guild - 12 North Jackson Ave  
St. Louis, MO 63105

## Featured Artist

# Michelle Spencer



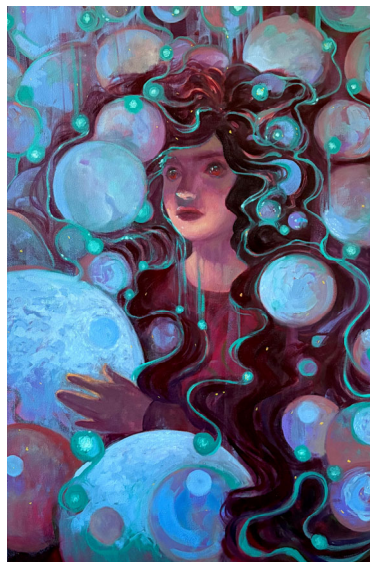
"Destiny"



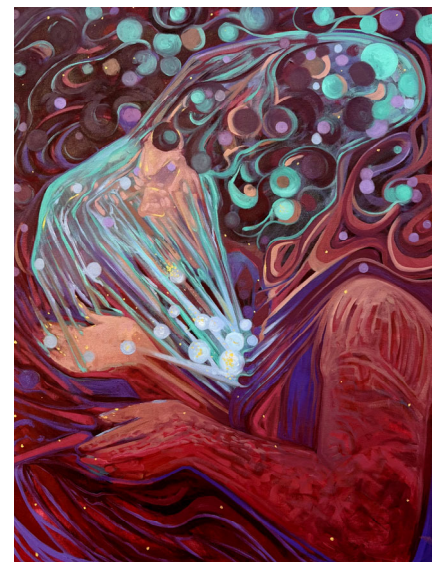
"Please Don't Leave Me"



"The Mountain"



"Them"



"Rage"