



GRAFICA

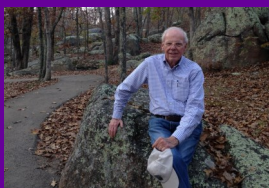
Volume 14 Issue 3 Summer 2022

Upcoming Events

3rd Thursday Artful Conversation

July 21
3rd Thursday
5:30 to 7:30 pm

Art Stauder
Plein Air Artist
"91 Years of Art"



See article at right for our first
apres-COVID opening!

See page 2 for more art events!!

Tranquil Moments by Ron Garnier



"Leaving Home"



"Pansies in White Vase"

It's Showtime!

We haven't had a show since COVID shut everything down back in 2020. This show had been planned for June that year — and it will take place this year with an opening reception on

Friday, September 16 from 6-9 pm. Save the date now and watch our website, Facebook page and newsletters for updates. The show will include Ron's fabulously detailed still life images as well as his figurative work. Stay safe so we can **see you in September!**

GRAFICA

FINE ART GALLERY & CUSTOM FRAMING
FINE ART PRINTING & PHOTO RESTORATION

7884 Big Bend Blvd.
Webster Groves, MO 63119
(314) 961-4020

Email: grafica@graficafinearts.com
Website: www.graficafinearts.com

Owners: Lary & Lynn Bozzay
Picture Framer: Shana Kotovsky, CPF

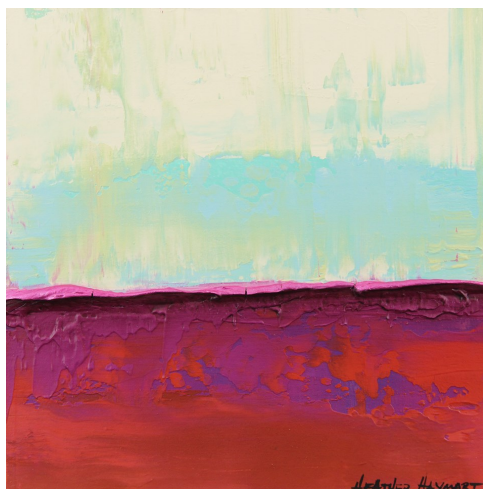
Hours: Tues-Fri 10 am to 5:30 pm
Sat. 11 am to 3pm
or by appointment

On Big Bend in the Old Orchard Business
District of Webster Groves -- between
Murdoch and Laclede Station Road

Masthead art from Ralf Broughton's "Oz"

Featured Artist

Heather Haymart



"THAT Was Fun"

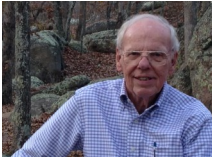
Well THAT was fun...on two levels. I was immediately drawn to this image because of the textures and colors. And, Heather had just worked with us on creating the perfect art for the lobby of a commercial project. It took a while to figure out what the client wanted, but Heather came through like champ! (See the article on page 3 for photos.) Heather's work is all through this issue. Enlarge the images to really enjoy the layering, the textures, the yummy colors that play so nicely together!

Upcoming Events

Continued from page 1

3rd Thursday speakers:

July 21



Art Stauder
Plain Aire Artist
"91 Years of Art"



Sept. 15

Luanne Rimel
Textile /
Photography
Artist



August 18
Heather Haymart
Painter
My Artistic Process



Oct. 20

Gerry Welch.
former Mayor of Webster
Groves

"The Importance of Art
for a Community"

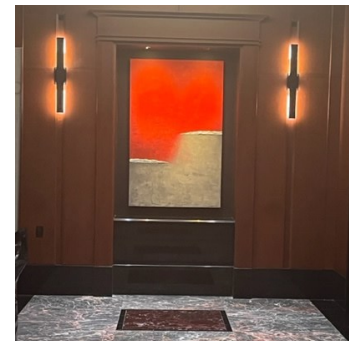
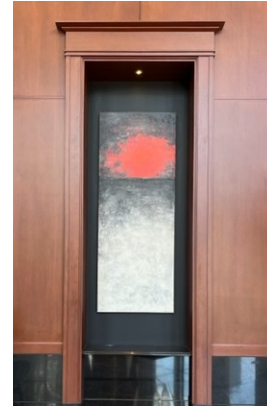
Shaw Park Plaza Art by Heather Haymart



The Challenge:

Provide an "interesting pop of color" for this newly re-modeled Clayton office building.

It took a while to find the perfect answer to this challenge; but, Heather and the property owner found a some common ground and the result is art that really resonated for the buyer. They look stunning!



The above two pieces have places of honor in the lobby of Shaw Park Plaza. The piece to the right is at the bank of elevators on the first floor.

The lobby artworks are 32" wide x 84" high. The elevator art is 38" wide x 60" high. (I knew you were wondering.)



Each of these pieces are set in recessed niches with a dark charcoal background. That really helps the colors "pop" like the owner wanted.

The shot of Heather in front of one of her masterpieces is for perspective!



Heather Haymart
Painter

I graduated from the University of Missouri - Columbia with a BFA and a BSed in Art Education. I taught drawing, printmaking, ceramics, painting and more in middle and high school in addition to running the art club.

After teaching for six years, I painted murals in private homes and businesses. This was the bridge I needed to begin my journey of being an artist while also staying home with my young children. Over the last two decades, I have displayed my work in every venue I could find and I traveled the Midwest

participating in art fairs. My work has been exhibited in galleries and universities and I have created commissions for private and corporate collections. My very favorite part of this artistic life is creating art that people connect with and value enough to make it a part of their homes.



Being creative became part of me before I could breathe. It was passed down from generations ahead of me and continues through my children. This creative mind carried me through grade school as I drew a copy of every birthday card that came into the house. It accompanied me in high school while I learned how to use pen and ink, watercolor and even make a baseball bat on a lathe in shop class. Art studio courses in college were a constant source of nourishment.

After college I quickly transitioned from art teacher, to mural painter and then finally to what I have always been called to do; create paintings to share with the world.

My abstract texture paintings resemble something familiar yet not immediately recognizable. One person sees a field of flowers while someone else sees a beautiful sunrise. I love creating a sense of mystery that encourages the viewer to feel like they may hold the key.



Heather Haymart

Heather's website:
<https://www.heatherhaymart.com/>



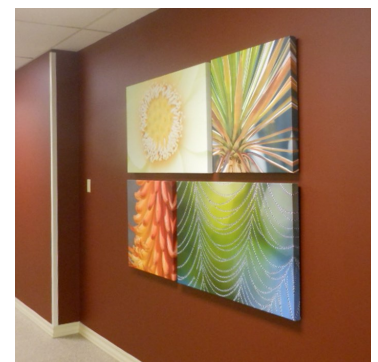
Grafica has been privileged to work with many architects, organizations and designers to create positive environments.

A link to the University of Exeter article — and an article by Kirstie Brewer of The Guardian based on Exeter's study — are below. Thought provoking reading. Call us if we can help you find that perfect art for your space.

Sources: https://www.exeter.ac.uk/news/featurednews/title_98638_en.html
<https://www.theguardian.com/careers/2016/jan/21/art-works-how-art-in-the-office-boosts-staff-productivity>

Because of the COVID-19 pandemic, more and more people are working from home - or are splitting their time between their home and office. So, this is a good time to take a look at how art affects the workplace.

The headline in a 2010 article published by the University of Exeter reads "Designing your own workspace improves health, happiness and productivity". The article continues to explain that, the more input workers are given in the selection and placement of art and plants in their working environment, the more positively it impacts their attitudes and performance.



Photography by Henry Domke

FINE ART GALLERY & CUSTOM FRAMING
FINE ART PRINTING & PHOTO RESTORATION

7884 Big Bend Blvd., Webster Groves, MO
63119
(314) 961-4020

Email: grafica@graficafinearts.com
Website: www.graficafinearts.com

Hours: Tues-Fri 10 am to 5:30 pm
Sat 11 am to 3 pm
Or by appointment

Eastbound Hwy 44 :
Laclede Station Road-Murdoch exit
282 / right off exit / right on Murdoch /
right on Big Bend / we'll be on the right.

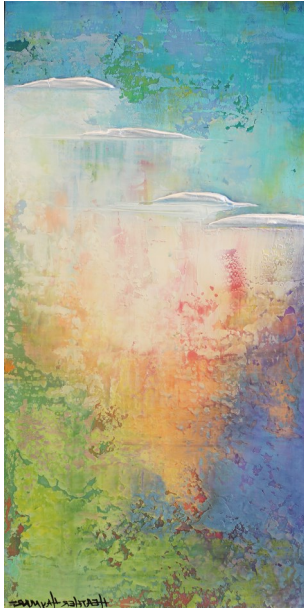
Westbound Hwy 44:
Shrewsbury exit 283—left to Big Bend,
turn left / cross Laclede Station Road /
we'll be on the left

Westbound Hwy 40:
Big Bend exit 33A— go left for just
over 2 miles. We'll be on your left just
past the light at Laclede Station Road.

Eastbound Hwy 40:
Hanley exit 31B south for just over 2
miles — right on Big Bend . We're on
the left. (NOTE: Hanley becomes La-
clede Station Road.)

Featured
Artist

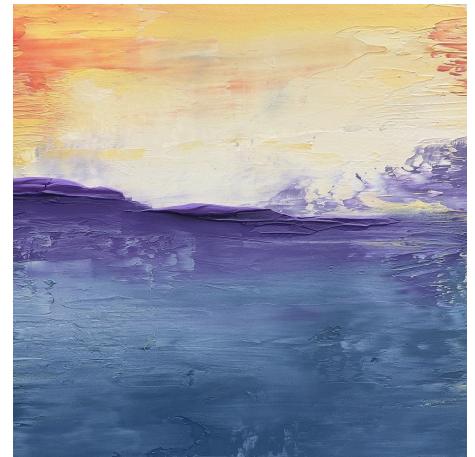
Heather Haymart



"Replenish"



"Embracing Change"



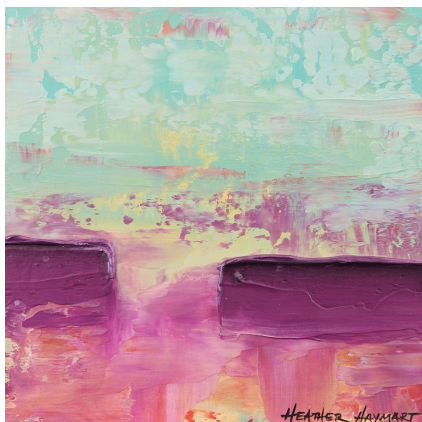
"Fresh Start"



"Overcoming, Overthinking"



"Taking Care"



"Jump Right In"



"Embracing Change"



"Skip a Beat"