

2026

Lakes Edition

Sponsored by *SkyCarp*[™]



OFFERING GREAT PLACES TO EXPLORE, DINE, CAMP AND SHOP
Discover attractions, festivals and events, plus calendars and feature articles.

- Lake Koskonong
- Lake Kegonsa
- Lake Ripley
- Rock River
- and all surrounding areas!



Published by **The Edgerton Reporter** | Edgerton, Wisconsin • Summer 2026



Diaz Roofing Company, L.L.C.

608-209-5099

Or Call

608-209-5355

Over 10 Years of Experience

*Serving Edgerton &
Surrounding Communities*

PROFESSIONAL & PROMPT SERVICE

- FLAT ROOFS
- SHINGLING
- TEAR-OFFS
- CLEANUP
- NEW CONSTRUCTION
- REMODELING



**CALL US TODAY FOR
HOME IMPROVEMENT
PROJECTS
BIG & SMALL**

***Customer Service
Is Our #1 Goal***

- SNOW REMOVAL - ROOFS

**MOST ROOFS
COMPLETED
IN ONE DAY!**

**CALL US TODAY ABOUT SIDING &
SEAMLESS GUTTERS**

**ALL WORK GUARANTEED
LICENSED & INSURED**

Greetings, Summer Residents and Vacationers!



Welcome to our 46th Annual Lakes Edition, an award-winning publication featuring eight area lakes and the Rock River. This special edition is geared to summer life in our area, including great places to shop, dine, camp, play and explore. Highlighted in these pages you will find fairs, festivals, parks, area attractions, feature articles, calendars of events, community profiles, area history and much more. In short, this publication is aimed at helping you have the most pleasurable, engaging experiences possible in our fun-filled region. Enjoy!

—Helen and Diane Everson, Publishers
Photos from Edgerton Reporter files

A SUMMER TRADITION!

Sean invites you...

...to enjoy our 'Old Fashioned' commitment, top-notch service, relaxed atmosphere, quality steaks & seafood and refreshing cocktails!



NIGHTLY SPECIALS:

Tuesday

Ribeye Steak & Boneless Pork Chops

Wednesday

Prime Rib

Thursday

Steak & Shrimp

Friday

Fish Fry

Cod or Lake Perch

Saturday

Prime Rib

Sunday

Steak & Shrimp

Plus other nightly specials!

Planning a Party or Special Event?

Call for details on our private party facilities!

STAGECOACH

Dining



608-868-3850 • Hwy 26 between Fort Atkinson & Milton

Open Tues-Thur 4:30-9:30 pm, Fri-Sat 4:30-10:30 pm & Sun 3:30-9:30 pm

Reservations encouraged

Edgerton Hospital Healing Garden Celebrates 15 Years of Beauty, Wellness and Community

By Mark Dwyer

The Edgerton Hospital Healing Garden is celebrating 15 years of offering a beautiful respite for patients, staff, visitors, and community members. Spanning three acres, the garden can be experienced actively via accessible paths, by people participating in therapy and recovery initiatives, or attending community programs, events and engagements. The garden is also enjoyed passively through the many windows that view this colorful space.

The healing garden was intentionally incorporated into the hospital's design during construction. Built around a functional retention pond, the space features accessible pathways, benches, raised planting beds, a large arbor, pavilion and numerous other amenities. Promoting relaxation and reducing stress remain the garden's primary objectives. A large variety of lush, colorful plantings, including trees, shrubs, perennials and annual flowers, create a rich tapestry of color and texture throughout.

Fragrant plants remain a prominent feature of our healing garden. More than 100 fragrant varieties are showcased each year. Research has shown that access to natural healing environments like this can help lower stress levels, support faster recovery, reduce medication use and enhance overall patient experience.

The garden is maintained thanks to the dedication of many volunteers, our two gardeners, and seasonal staff. Annual flower beds, including those at the hospital entrance,

are redesigned each year with new color palettes and themes, while decorative containers add seasonal interest throughout the grounds. One large bed highlights primarily native plants with a strong focus on supporting area pollinators. A "Pollinator Hotel" is featured in this space as a habitat for solitary bees and wasps. Not far away is a monarch hatching station that is actively used to support and release over 50 monarch butterflies each season. Visitors can also explore the adjacent 15-acre woodland, which includes a half-mile of groomed walking trails.

This year, a new entrance pathway on the garden's southeastern edge welcomes visitors through a series of three moon-gate arches accented by benches and colorful plantings. Throughout much of the garden, bold shades of yellow, orange and red are used to improve visibility for individuals with visual impairment, while the color scheme in front of the garden utilizes a wide range of pink tones. The four raised garden beds showcase fragrant blooms and plants specifically chosen to attract hummingbirds. The garden is known for heavy hummingbird visitation due to these supportive plantings!

Another annual feature is our Garden Art Project. Now in its 5th year, this addition to our healing garden displays 50 butterfly-shaped cut-outs, creatively designed by area artists, that are installed throughout the garden. The pieces will be available through an online auction this fall, with proceeds benefiting both the Healing Garden and the Edgerton Hospital Auxiliary.



The 2026 garden season also brings a new opportunity for visitor engagement with our first healing garden calendar photo contest. We encourage people to submit up to 5 photos from our healing garden, to be considered for our 2027 Edgerton Hospital Healing Garden Calendar. More

information about conditions and submission can be found at edgertonhospital.com.

The healing garden continues to be a beautiful and peaceful setting for everyone to enjoy. Reach out if you're interested in volunteering, scheduling a tour, or supporting this amazing community resource.



Limited Edition Commemorative Pottery created by Local Artists!

11th Anniversary Edgerton Pottery & Art Festival



SAVE THE DATE!
Harvest Fest & Pottery Fest
 Saturday, August 22, 2026
 Silverwood Park
 771 Silver Lane / Hwy 106, Edgerton, WI



Arts Council of Edgerton

A Local & Independent Health System



Edgerton HOSPITAL
AND HEALTH SERVICES

Providing Quality and Comprehensive Care. With Services Including:

- Pain & Spine Center
- Orthopedics
- Surgical Services
- Wound Care
- Community Education
- Mental Health Services
- Cardiac Rehabilitation
- Rehabilitation – PT, OT, Speech
- Primary Care Pediatrics
- Family Medicine
- Emergency Care
- Ear, Nose & Throat (ENT)

- Respiratory Therapy
- Senior Life Solutions
- Pulmonary Rehabilitation
- Walk-in Healthcare – Quick Care & Urgent Care
- Sleep Clinic
- Laboratory Services
- Medical Imaging
- Swing Bed Program
- Infusion Services
- Telemedicine Psychiatry
- Telemedicine Endocrinology







Accepting MercyCare Health Plan Starting July 1, 2026

We accept all the same insurance plans and are adding MercyCare

An Edge on Healthcare, Close to Home

11101 N. Sherman Rd., Edgerton, WI • www.edgertonhospital.com

Edgerton Hot Spots & Happenings

The Sterling North Home and Museum, 409 W. Rollin St., was the boyhood home of author Sterling North, who, among other popular titles, wrote the children's book "Rascal." Today the home serves as a literary center and museum with programs available to schools and the general public. The home has been restored to its 1917 setting and is furnished with authentic antiques, including North's desk and typewriter, and many family artifacts, photos, books and memorabilia. A restored barn and the grounds are also part of the tour. The museum, which includes a gift shop, is open Sundays, April-December, from 1-4 p.m., and by appointment. 608-884-3074, www.sterlingnorthsociety.com

Albion Academy Museum, 605 Campus Ln., (in Town of Albion, two miles north of Edgerton) is located in the rebuilt Kumlien Hall. The museum showcases how life at the academy looked from the 1860s to the 1910s. An exhibit featuring the Albion Tigers baseball team memorabilia is also featured. Albion Academy was founded in 1854 as the first co-educational academy in the state. Also on the campus is Sheepskin School, a rural one-room schoolhouse that looks like it did when it was closed in 1959.

The museum is open Sundays in June, July and August from 1-4 p.m. (excluding Edgerton's Tobacco Days weekend). The campus includes a park with playground equipment, picnic shelter and bathrooms. 608-774-4339, aahs50.wordpress.com

Happenings

Ongoing-Saturdays, May-October—Edgerton Community Farmers Market: 9 a.m. to 1 p.m. in Central Park, 312 N. Main St. Seasonal, locally-grown or made fruits, vegetables, cheeses, berries, flowers, plants, herbs, soaps, eggs, honey, arts, crafts and more. 608-884-8504, www.facebook.com/Edgerton-CommunityFarmersMarket/

Select Wednesdays - Concerts in the Park: Central Park, 310 N. Main St., 6:30 p.m. Enjoy this series of free summer outdoor concerts sponsored by the Arts Council of Edgerton (ACE). Located at Menhall Band Pavilion. The series is sponsored by contributions from local organizations and individuals. Dates and performers: June 11 - The Jimmys; June 25 - Driveway Thrift dwellers; July 9 - Main Street Big Band; July 23 - VO5; Aug. 6 - Mike Schneider Polka



Gordi's Tailgate Chili at Chilimania in 2025. (Photo by Mikey Rottier)

Band; Aug. 20 - Edgerton Community Band; Aug 27 - Make Up date (or additional concert) See story elsewhere in Lakes Edition for more details. www.artscouncilofedgerton.com.

July 3 - Edgerton Lions Fest and Fireworks: Musical entertainment, family entertainment, food, beverages and a spectacular fireworks display. The Edgerton Lions have provided Independence Day fireworks and activities for the Edgerton area for more than 65 years. This Independence Day festival,

running from 4 p.m. to midnight, typically features a petting zoo, local baseball and softball games, a bean bag tournament, a pie eating contest, a "Red, White and Blue" dress-up contest, chicken bingo, local talent on the stage starting at 4 p.m., live music at 7 p.m., a recently added dunk tank and, of course, the thunderous spectacle of fireworks at dusk. Food and beverages will be sold at the concession stand. This is a fundraiser for the Edgerton Lions Club, so no carry-ins. Takes place in Racetrack Park (IKI Drive

and Stoughton Road). Check websites to confirm details. 608-884-2862, edgertonlions.org, edgerton-fireworks.com

Tired Iron Cruise Nights Car Show: Albion Park, 612 Albion Rd, Edgerton. Come out to beautiful Albion Park and see great classic cars and trucks, have good food, and meet wonderful people. Held on second Wednesday of the month, May through Sept. 608-757-3171.

July 17-19 - Edgerton Tobacco Heritage Days: Huge festival

celebrating the city's heritage. Events will take place at various locations throughout the city, primarily downtown and at Racetrack Park. Events include massive car show Saturday downtown (see separate listing), big wheels race, lipsync contest, baseball, softball, city-wide rummage sale, Rascal Run/Walk, downtown parade on Sunday, live bands, food and much more. Arts in the Park is now being held in Albion Park in Albion (see separate listing). Also, Edgerton Clay Day and Art Festival will be held July 20 during Tobacco Days (see separate listing). There are fun activities for all ages all weekend long. Be sure to check out the website for a full, up-to-date schedule. www.edgertontobaccodays.com

July 17-20 - Great Midwest Pro Rodeo and Bull Riding: Thresherman's Park 332 E. County Rd. M, Edgerton. Experience action-packed performances at the Annual Great Midwest Pro Rodeo & Bull Riding featuring Bareback & Saddle Bronc Riding, Steer Wrestling, Cowgirls Barrel Racing, Team Roping, Girls Breakaway Roping and bull riding. You'll be thrilled by the spectacu-

Continued on page 10

Summer Residents and Visitors



Welcome

to Creekview Par Three Golf Course

Daily Specials • Challenging Course
Club House Available for Parties and Special Occasions

Full Menu
Daily Specials
Burgers
Wings
Salads



770 Albion Road, Edgerton
608-884-2250

Two can play for the price of one plus cart rental.
Not valid with any other offers.
Expires 10/31/2026

ELEVATE ESTATES

REALTY CO.

*MORNING COFFEE ON THE DOCK.
SUNSET CRUISES. LIFE ON THE LAKE.*

**AT ELEVATE ESTATES REALTY CO.,
WE HELP BUYERS AND SELLERS
MAKE THEIR NEXT MOVE WITH EXPERT LOCAL
KNOWLEDGE AND A SPECIALTY IN WATERFRONT
AND LAKE COMMUNITY PROPERTIES.**



**EVERY HOME HAS A STORY.
EVERY LAKE HAS A LIFESTYLE.
FIND YOURS TODAY.**

**BROKERED BY LINDSAY GALLAGHER
YOUR WATERFRONT &
LAKE COMMUNITY EXPERTS**



**ELEVATEESTATESREALTY.COM
- 608.873.9239 -**

Eldon Homes



- ELDONHOMES.COM - 608.480.9432 -



— Meet Your —
BUILDER


**LOCAL PEOPLE.
LOCAL VALUES.
HIGHER STANDARDS.**

Because your next
home should be built *better*.

CHECK OUT OUR NEW HOMES IN:

SHAMROCK ESTATES - ALBANY
HAWKS VIEW - ALBION
SETTLER'S GROVE - EVANSVILLE
QUARRY RIDGE - COTTAGE GROVE
STONE BARN ESTATES - MILTON
MAGNOLIA SPRINGS - STOUGHTON

**WE BUILD CUSTOM
HOMES ON YOUR LAND!**



Kinnett family offers three waterfront businesses to enhance your summer



Floating Toy

By Mikey Rottier
Special to the Reporter

The Anchor Inn is back under the ownership of the Kinnett family, starting a new chapter for the longtime Rock River favorite. Known for its scenic setting, the Anchor Inn has long been a gathering place for locals and visitors alike. Now, with the Kinnett family back at the helm, guests can expect an experience that builds on tradition while adding new energy to the riverfront.

The Anchor Inn features a refreshed menu filled with crowd-pleasing favorites, alongside an upgraded drink selection designed to complement summer days on the water. Live entertainment will also take center stage, with some of the region's top bands bringing music and energy to the venue throughout the season. The venue will continue to offer its popular banquet space, ideal for weddings, corporate gatherings, and special events. As part of the transition, the

Anchor Inn will no longer offer seasonal boat slips. Instead, its docks will be reserved exclusively for daily customers arriving by boat, making it easier for visitors to stop in and enjoy the restaurant.

For those seeking longer stays on the water, the Kinnett family's marina operations provide options just across the river. Wet Bottoms Marina serves as the hub for seasonal slip rentals and boating services, alongside the family's established rental business,

Photo Submitted



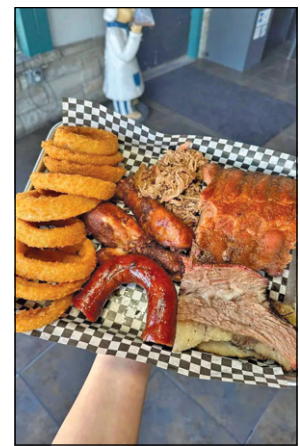
Anchor Inn

Photo Submitted

Floating Toy has been a staple on Lake Koshkonong since 1996, offering pontoon rentals. Now located on Ellendale Road in Edgerton, the business provides modern Premier and Manitou pontoons, accommodating up to 12-13 passengers. Whether visitors are looking to fish, cruise, or simply

relax on the water, Floating Toy delivers a way to experience the lake.

Back on shore, Wet Bottoms Bar and Grill is known for its hearty BBQ menu, cocktails, and entertainment. Wet Bottoms offers both indoor and outdoor stages featuring local musicians, DJs, and bands. With access by both car and boat, it's a natural



Wet Bottoms

Photo Submitted

complement to a day spent exploring the river. Together, these family-owned businesses create a complete waterfront experience. "We just try to create a good atmosphere, good service, good food and a family-friendly experience," John Kinnett said. "We take pride in the ownership of the area businesses."

Edgerton Pottery and Arts Festival at Silverwood Park Aug. 22

By Mikey Rottier
Special to the Reporter

Edgerton Art Clay Works is hosting the eleventh annual Edgerton Pottery and Arts Festival on Saturday, Aug. 22 at Silverwood Park.

Fred Maves, member of Edgerton Art Clay Works as well as the Arts Council of Edgerton said that he is pleased that the festival has been able to continue for a decade since it is part of the city's heritage. "I think it shows that people enjoy it and want to come to it and keep coming to it year after year," Maves said.

He added that the longevity of the event stems from the dedication of the pottery plaza in Edgerton in August of 2015. "The decision was made that there was going to be an opening for this event of the plaza and the large scale sculptures there, so I asked 'well is there any kind of clay event going on?' because a main part of this display is the actual clay businesses listed on the wall that were part of the city's origin back in 1853," Maves said.

He explained that in preparation for the dedication event he set out with a group of former students and Department of Public Works employees to dig some clay, which he said is the same kind of clay that was used by people from this area in the mid-1800s. At the event the



Fred Maves instructs on how to use a potter's wheel at the Edgerton Pottery and Arts Festival.

clay was a hit.

"From that point on, we've been actually using local clay in our various iterations," Maves said. "So I think that's kind of what I see as the main connection with the turf, the area, the town, and actually it was clay that actually brought the railroad to Edgerton."

While most people associate Edgerton with tobacco, Maves said that clay was actually a major part of the city's claim to fame as well.

"Coincidentally, 1850 was the first year that Dr. Charles Head found the clay and the first saleable tobacco crop, on the

same date. So I mean there's some confluence there," he said.

Prior to the opening the Arts Council of Edgerton hosted a number of different festivals and events, but nothing quite like the Edgerton Pottery and Arts Festival that they have today.

"We actually kind of reinvented the festival, there have been various different kinds of festivals in the past put on by the Arts Council, which is still very active," Maves said. "But, with the people there at that opening, they just wanted more, and so I think it just sort of blossomed from there."

At the event, the main

attraction is potter's wheels with volunteer artists there to monitor the wheels and guide people through the process of making pottery. Individuals of all ages in attendance can sign up for a time to sit down with a volunteer and experiment the process.

All ages are welcome at the event. For the really little kids there is a clay stomp where the kids can "get down and dirty"

with the clay stomp.

"We try to have what's called a 'clay stomp' for the little kids," Maves said. "We just stretch out some tarps and put some clay down and they take their shoes off and then jump around in the clay. So we're hoping to have that again ... it's just a fun alternative, especially for kids that are probably too young to actually sit down at the wheel."

Overall, Maves said the individuals who choose to come to the Edgerton Pottery and Arts Festival won't be disappointed.

"It kind of speaks for itself," he said. "Once you see how this activity transpires and all the people that are involved, the volunteers to help show the process and guide people through it, it's just sort of a nice laid back situation."

Welcome to Wisconsin

Sterling North Home & Museum

409 W. Rollin St., Edgerton
Open Sundays 1-4 PM
May through October

Tours by Appt. Available
Call 608-561-3709

Visit our website:
www.sterlingnorthsociety.com

Find us on Facebook @
Sterling North Museum



EDGERTON FARMER'S MARKET

A Wisconsin vendor produced market

A Great Opportunity

Please join us in sharing an abundance of seasonal, locally grown or made fruits, vegetables, cheeses, berries, flowers, plants, herbs, soaps, eggs, honey, arts, crafts & much more!

Shop Close to Home

The market will be held at Central Park within walking distance to our historic downtown business district.

EVERY SATURDAY 9AM-1PM
MAY TO October

JOIN US! For details call 608-884-8504

TOWNE C.C.

"Play Golf where Steve started!"

Great People • Great Value

115 Jenson St., Edgerton, WI 53534 • 608-884-4231

To book 9 or 18 holes
www.townecountryclub.com



Unleash Lakefront Fun!

(608) 921-9453

723 E Ellendale Rd., Edgerton, WI 53534

<https://floatingtoy.com/>



Your Favorite Lakeside Hangout!

FUN • FOOD • MUSIC



(608) 884-0017-6279

718 WI-59, Edgerton, WI 53534

<https://www.anchorfun.com/>



BBQ With A View!



(608) 561-6279

723 E Ellendale Rd., Edgerton, WI 53534

<https://wetbottoms.com/>

Back under the Kinnett Family Ownership

Edgerton Continued from page 5

lar bucking horses and bulls, champion cowboys and cowgirls from across the US and Canada, hilarious rodeo clowns, great music, kids games, terrific vendors & more. 815-823-3245.

July 17-19 - Tobacco Days Car and Truck Show: Large annual show in Edgerton's downtown. Gates open at 7 a.m., with registration running from then until 11 a.m. Judging begins at 11 a.m. trophies presented at 2 p.m. Raffle will feature top prizes of \$250, \$500 and \$750. Raffle tickets can be purchased at Steve's 51 Repair, Newville Auto Salvage or from show committee members. tobaccodayscarandtruckshow.com

July 18 - Albion Stroll Thru Arts in the Park Craft and Gift Fair: This annual craft and gift fair is now in Albion Park in Albion, moving from Central Park in Edgerton. The fair offers many crafts and gifts, pie social, food, music and free parking. Albion Park, 605 Albion Rd. 9 a.m. - 2 p.m. Free admission. 608-289-1042, 608-884-6039

July 18 - Albion Academy Historical Society's Pie and Ice Cream Social: Dessert and visiting with other people interested in the history of Albion and the Academy. Also featuring a silent auction on the grounds. There is a requested donation of \$2 per person or \$5 per family to tour the museum and the Sheepskin one-room schoolhouse. Confirm details on website. 10 a.m. to 2 p.m. Located at Albion Academy Historical Society (605 Campus Ln.), Exit 160 off I-90, two miles north of Edgerton in Albion. 608-774-4339, aahs50.wordpress.com

Sept. 4-7 - 70th Annual Rock River Thresheree Reunion: This annual living history festival features working antique steam engines and equipment demonstrations in the 200 acre park. Take a train ride on the Rock River Cannonball and watch an operating saw mill and pile driver. Check out the blacksmith shop, woodcarvers, antique cars and trucks, construction equipment display and demonstrations, steam calliope, kids activities and more. Shop the large flea market and take the opportunity to drive your first tractor, watch the daily Parade of Power at 2 p.m., and enjoy live music each evening. This year's marquee features are "The Farmall Frolic" and 100th anniversary of Janesville's Samsen Company along with any other Janesville-built equipment. Concessions available. Use entrance on Highway M, just off Highway 51. 8 a.m. - 5 p.m. each day. Thresherman's Park, 51 E. Cox Rd. (bordering Highway 51 between Edgerton and Janesville). 608-868-2814, www.thresheree.org

Sept. 11-12 - Chilimania: A street festival featuring the Upper Midwest's largest chili cook-off and salsa competition. An average of 70 chili cook booths fill the street with mouthwatering smells. Musical entertainment by top bands rock the festival stage all day and into the night. Games and activities for children make Chilimania a good option for families. Food vendors and a beer area round out this fun-filled festival. Admission is charged. 10:30 a.m.-midnight. Also, don't miss the Sept. 11 Country Edge concert (see above listing), an event that kicks off the Chilimania festival. This year's headliner is Dylan Scott. 608-561-7566 (days), www.chilimania.com

Take a cool break!

Enjoy our delicious meals & treats...



ALL AMERICAN FOOD



dine in, carry out, or experience the nostalgia of days gone by as our carhops serve you!

A&W Family Restaurant
601 N. Main St., Edgerton, WI 608-884-8412
www.awrestaurants.com



Travel Tip #47:

"Always Know Where Your Nearest & Best Hardware Store Is!"

- Rental
- RV & Camping
- Paint
- Propane Exchange

DEEGAN'S 

HARDWARE & RENTAL

1025 N. Main Street, Edgerton, WI 53534
608-884-3913 • deeganshardware.doitbest.com

The Wartmann ARTIST SERIES

Uptown – A Celebration of Motown & Soul

Saturday, October 10, 2026 @ 7 PM



Fusing Bruno-Mars-caliber stage presence with top-tier vocals and wall-to-wall choreography, the men of UPTOWN combine the smooth stylings of R&B with the fresh hits of today in a unique and modern show that gets every crowd on their feet! Born in New York City (the epicenter of contemporary pop and soul music), the group exudes unparalleled energy with their blend of contemporary radio hits and classic Motown music. Every single member of UPTOWN is a world-class soloist, with frequent comparisons to the artistry of icons like Stevie Wonder and Marvin Gaye; when they come together as one collective, the resulting remix creates "the most electrifying show you'll see this decade!" (Agua Caliente, Palm Springs CA).

Aria Nouveau – Pop & Opera

Saturday, November 14, 2026 @ 7 PM



Aria Nouveau: The soaring sounds of crossover superstars Laura Auer (multiple Billboard-charting pop artist) and John Riesen (America's Got Talent), known together as ARIA NOUVEAU, elevate audiences to new heights as they celebrate the world's greatest voices in BOCELLI TO BROADWAY. With a setlist featuring popular hits like "The Prayer" and "The First Time Ever I Saw Your Face," timeless classics ("Nessun Dorma," "La Vie en Rose"), and massive anthems from shows like PHANTOM OF THE OPERA and WEST SIDE STORY, this duo will evoke the spirit of artists like Josh Groban, Sarah Brightman, Andrea Bocelli, Celine Dion, Ariana Grande, and more with sweeping orchestrations and a live string quartet.

Celtic Angels Christmas – Celtic Christmas

Sunday, December 6, 2026 @ 2 PM



Celtic Angels Christmas: Celtic Angels Christmas is a beloved touring holiday production that brings the magic of an Irish Christmas to audiences worldwide. The family-friendly show blends classic Christmas carols with traditional Irish melodies, featuring soaring vocal harmonies, world-class step dancing, and the dynamic musical accompaniment of the Trinity Band Ensemble of Dublin.

Kirstie Kraus – Country

Saturday, February 20, 2027 @ 7 PM



Kirstie Kraus: Kirstie Kraus isn't waiting for permission. The Nashville-based country artist has been carving her own lane with a sound that hits like modern country with a little extra kick — grit, groove, heart, and high-energy charm. She's the kind of artist who can turn a festival stage, a honky-tonk, or an overseas crowd into her world, and her rise has been powered the old-school way: great songs, relentless touring, and a magnetic connection with fans.

DSB – The Journey Tribute

Saturday, April 17, 2027 @ 7 PM



DSB Journey Tribute: Since 2009, DSB's high-energy stage production and exceptionally accurate recreations of Journey classics have made DSB the #1 Journey legacy concert experience in the world. DSB has been highly revered as the world's greatest. They have captured the lush and signature sound of renowned vocalist Steve Perry and Journey in their prime.

Vegas McGraw – Tim McGraw Tribute

May 1, 2027 @ 7 PM



Vegas McGraw: The Million Dollar McGraw Show is unlike anything else in America — a one-of-a-kind entertainment experience that combines the biggest hits of Tim McGraw with the legendary music of Elvis Presley, Johnny Cash, Jerry Lee Lewis, and other iconic artists. This exciting Las Vegas-style production blends country music energy with the spirit of classic rock 'n' roll, creating a show that appeals to audiences of all ages. From heartfelt country ballads to explosive rockabilly classics, every performance is packed with nonstop entertainment, incredible musicianship, and unforgettable moments.

Tickets on sale: July 1, 2026

Tickets: **\$35** each or purchase the Series/Subscription which includes one ticket to each of the six concerts for **\$125**

www.edgertonpac.com • 608-561-6200



Edgerton native and pro golf champion Steve Stricker getting back to competitive play

By Mikey Rottier
Special to the Reporter

Edgerton's own professional golfer Steve Stricker made a comeback to competitive play this summer.

In the last few years Stricker has dealt with injuries to his neck, back and hip, but he returned to compete and host the AmFam Champ Tournament in Madison the first weekend of June.

For the second year in a row, Stricker partnered with brother-in-law Mario Tiziani in the team event. The pair carded a 23-under 190, which earned them a seventeenth place finish.

"It was fun to get into the competition again," Stricker said. "It's been a while for me."

Between the 2025 and 2026 American Family Insurance Championships, Stricker competed just once at the PNC Championship in December.

Going forward he expects to increase his competition schedule.

"I'm looking forward to getting back to playing more regularly," Stricker said. "That's what I've been missing really is just being out there with Mario, some of the other guys that I haven't seen for a while ... just a lot of good people that I don't

get to see very often, so that will be really good."

Ahead of the AmFam Champ Tournament in June, Stricker said his body was feeling good and throughout the weekend he told reporters it held up well other than some fatigue to recovering areas.

"I'm a little fatigued, my left side's a little fatigued," he said. "My left hip area, it's not sore by any means, just tired feeling, but I haven't been walking. I walk a lot, but I don't do this, walk, swing, play. I haven't been doing that, I've been riding in a cart mainly."

Stricker is no stranger to the "comeback." He told reporters he's learned through 36 years of golf what it means to come back, whether come back from a bad shot or round, and now he said it's about learning his body again.

"It's kind of what we all have to do as golfers, we have these ups and downs not only through the course of a round but through the course of our careers," he said.

The 59-year-old pro acknowledged that his professional career may be approaching an end. His goal is to take advantage of whatever time he has left.

"At a time and place



Steve Stricker watches a drive down the fairway during the American Family Championship in June. (Photo by Mikey Rottier)



Steve Stricker signs autographs at TPC Wisconsin after posting a final score of 23-under with partner Mario Tiziani at the AmFam Championship. (Photo by Mikey Rottier)



Steve Stricker tips his cap to the crowd after finishing the last round of the AmFam Champ Tournament on Sunday, June 7 at TPC Wisconsin in Madison. His daughter Bobbi caddied for him at the tournament. (Photo by Mikey Rottier)

in my career where time is kind of running out. I don't know how many years we have at this point," he said. "So excited finally to get back out there, continue to try to get better, swing at it better. Hopefully my



body holds up, which it has been, so I'm excited about that."

Did you know...All of the Great Lakes combined contain 6 quadrillion gallons of water.

**Enjoy Our Summer Area.
When You Need Us.
We Are Here!**

**Auto Glass Services • Windshield Replacement
Windshield Camera Recalibration
Windshield Chip Repair
Heavy Equipment & Commercial Vehicles**



GlassWorks
Of Wisconsin, Inc.

11323 N. Kenlyn Rd., Edgerton, WI 53534
608-290-6200 • Local: 608-884-2300
www.glassworkswi.com

Silverwood Park



2026 events, offerings, and needs

Book Discussion - June 26, 6 PM

The Serviceberry: Abundance and Reciprocity in the Natural World by Robin Wall Kimmerer. Books are available through interlibrary loan at the Edgerton Public Library.

Silverwood Harvest Fest - August 22, 10 AM to 2 PM

- Edgerton Arts Council; pottery demonstrations and hands-on clay experiences
- Educational tours of gardens and prairies • Live music by Boo Malarkey, pie booth, good food, and drink
- Vendors, artists, kid's market, and Silverwood Growers will be selling their wares • Children's events

Edgerton Public Library Soil Talk Series

In collaboration with the Friends of Silverwood Park, the soil talk series will be presented at Silverwood park, June 3, June 24, July 28, August 24, September 21.

**Silverwood Lucky Spud Produce Stand - Sundays 10 AM to 2 PM
August (could be earlier) through November**

- Silverwood Wreath making public event in November
- Candlelight hike, public event, January or February
- Silverwood offers organic garden rental plots
- Currently renting the Historic Stone House for weddings, reunions, graduations, birthday parties, etc.

Volunteers needed for:

- Farmstead restoration handyman
- For restoration and removal of invasive species



For more information: Info@silverwoodpark.org
www.silverwoodpark.org



The Friends of Silverwood Park, Inc. is a 501(c)(3) non-profit organization dedicated to the development and maintenance of Silverwood Park.

Ad donated by The Edgerton Reporter

Miami Marlins affiliate Beloit Sky Carp compete at ABC Supply Stadium all summer long

By Mikey Rottier
Special to the Reporter

The Beloit Sky Carp kicked off their 2026 season in April and will play regular season games throughout September with playoffs to follow.

The Beloit Sky Carp, High-A affiliate of the Miami Marlins used media day at ABC Supply Stadium to highlight what fans can expect at the ballpark as far as player performance on the field in addition to the experience in the stands.

For players, the challenge of minor league baseball lies in balancing personal advancement with team success. The MiLB offers a unique atmosphere in which players on the same team compete against each other for spots on higher level rosters within the system, while also trying to win games with their current teammates.

Sky Carp pitcher Justin Storm emphasized staying present as the foundation for a successful season.

"I think success really looks like someone who is present where their feet are," Storm said. "You want to be the best version of yourself today, then stack days like that and see where it takes you."

While the ultimate goal is to climb the organizational ladder, Storm said focusing too far ahead can be counterproductive.

"Even though the goal might be to move on, you still want to be your best version of yourself here," he said.

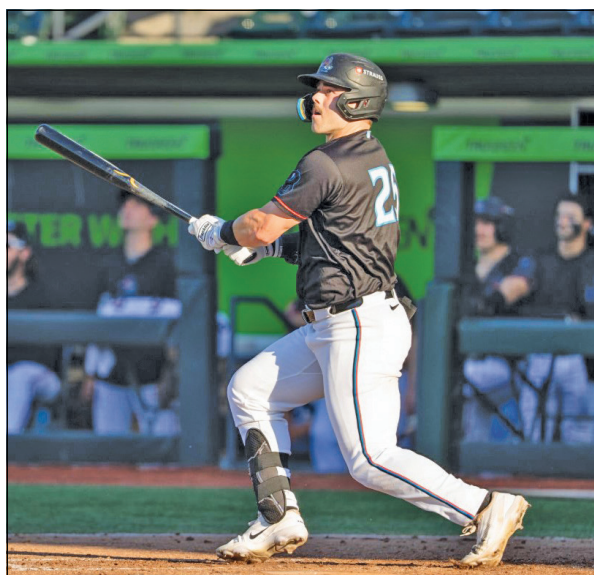
That mindset carries into team play, where constantly shifting rosters can challenge chemistry compared to the college level.

"The best teams I've been on are the ones where guys want to play for each other," Storm said. "If everybody's rowing in the same direction, that's when you see the best product on the field."

Outfielder Dillon Head shared a similar perspective but placed added emphasis on learning how to win at every level.

"I think the first and most important thing is winning," Head said. "Creating that environment with the guys in the locker room."

Head, who was drafted out of high school, said one



Brandon Compton smacks a home run earlier this season at ABC Supply Stadium.

of the biggest adjustments to professional baseball has been the consistency and pace of play.

"High school, you're not as developed," he said. "Now it's just the consistency of the game every day."

Like many modern players, Head uses advanced metrics to evaluate his performance, specifically "outs above average," a defensive statistic that measures range and effectiveness in the field.

"Being able to see how many outs I'm taking away above the average play helps me see my value," he said.

Outfielder Cam Cannarella, a 2024 draft pick out of Clemson University, echoed the importance of daily competition while adjusting to the grind of a professional schedule.

"In college, we played three, four, maybe five times a week," Cannarella said. "Now you play six times a week, just getting your body healthy and keeping it strong."

While analytics continue to shape the sport, Cannarella takes a more instinct-driven approach.

"I try not to look at that stuff," he said. "I would just say how hard I hit the ball."

The Sky Carp compete against a range of High A competition throughout the

midwest, including teams from Iowa, Illinois, Ohio and Michigan. Players stressed the importance of maintaining a consistent mindset regardless of opponent.

"If you treat it as anything other than business, you can get in your own way," Storm said. "Every game is the most important game on the schedule."

Beyond the field, the organization is equally focused on creating an experience that

Photo Submitted



The Sky Carp went on a playoff run last season. Members of the team celebrate by dousing each other with water after a win.

keeps fans coming back.

Drew Mains, Operations Manager for RS3 Sports Services—the hospitality company overseeing food and beverage at the stadium—said the goal is to engage all the senses.

"This is more than a ballpark, it's an amusement park," Mains said. "Our goal is to make memorable experiences, and a big part of that is how things taste and smell."

From freshly popped popcorn

to food coming straight off the grill, Mains said even small details are intentional.

"We wait until the last minute to pop popcorn to get that smell in the stands," he said.

The Sky Carp have also embraced the trend of creative ballpark food, offering unique items while incorporating regional influences from nearby markets like Chicago and Milwaukee.

"We try to make things more interesting than your run-of-the-



mill items," Mains said.

At its core, that effort ties into a broader mission.

"What we're all trying to do here is build community," he said. "We just want to make Beloit a better place to live."

Players recognize that connection with fans as part of their role as well.

"You're going out there and making somebody's day," Head said. "People are coming here to be entertained, so being able to put on a show is really important."

For fans in southern Wisconsin deciding between a trip to Beloit or heading north to watch the Milwaukee Brewers, the Sky Carp believe their product offers something unique.

"We've probably got the nicest stadium in the league," Storm said. "There's a lot for families and kids to do, and the food's really good too."

"We're going to put on a show," Cannarella added.



HICKORY HILLS
Campground

Have you ever discovered a place so special you want to keep it yourself? THIS IS IT!

Beautiful Wooded Setting on Rice Lake



SPRING-FED FISHING LAKE! SWIMMING POOL! MINI GOLF!

Bands • Mini-Golf • Boats • Pool • Lake
Game Room • Store & Gifts • Cottage Rental • Specialize in Fun

856 Hillside Road
Edgerton,
Wisconsin 53534

2 miles off I-90.
Exit 160
(Follow Signs)

(608) 884-6327

www.camphickoryhills.com

Many Scheduled Activities

Daily to Seasonal Camping Sites

Wave good-bye to spring and splash into summer at Edgerton City Pool



Local kids play near the duck slide at the Edgerton City Pool.

By Mikey Rottier
Special to the Reporter

The Edgerton City Pool began its summer operations and opened to the public on June 1. Edgerton pool is celebrating its 36th year and draws patrons from surrounding areas such as Stoughton, Milton and Janesville.

"It's just fun to see the community come together and have a good time at the pool," pool manager Mackenzie Patterson said.

The programs at the pool this summer include Early Bird Lap Swim for adults only on Tuesdays and Thursdays, from 6 a.m. to 7:30 a.m. and regular Lap Swim and Water Aerobics classes, instructed by Terry Corwith and Barb Hass, will be held from 10 a.m. to noon throughout the week.

The Open Swim hours

for Edgerton City Pool are held from noon to 8 p.m. on weekdays and noon to 5 p.m. on weekends.

Patterson said the pool can expect anywhere from 100 to 200 patrons at the pool any day of the week on nice days.

She added that the concession stands at the pool are a very popular part of the pool experience. Slushies and pretzels are the hot ticket items on the menu, but they also offer nachos, hot dogs, hamburgers, drinks and more. This year the concession stand has added cookie dough and some new candies to the menu.

During Open Swim hours the pool offers two slides, a duck shaped slide for younger kids as well as a larger white slide with a requirement to be 46 inches tall to ride for the older kids.

Welcome to

Lake Koshkonong and Rock River

"For all your concrete needs Commercial and Residential!"

Foundations ■ Additions

Retaining Walls ■ Excavating

Patios ■ Walks ■ Driveways

Also Backhoe, Bobcat, Dump Truck Work

We welcome our summer residents and look forward to helping you with your projects to improve your vacation get-a-ways. It could be shoreline work, a new driveway, or any other work requiring earth moving or cement. We are considered the experts. And, no job is too big or too small. We are here to help.

To our current customers ...

We have enjoyed serving you and wish to thank you for your loyalty. We appreciate you. We are proud to serve our area's concrete needs now and in the future.





Renae & Jamie Becker, with children, Travis and Payton. — The Beckers



608/884-6205

Free Estimates ■ Fully Insured

■ All Work Guaranteed with Affordable Rates



2026 SKY CARP THEME NIGHTS

JUNE 21 | 1:05 PM

FATHER'S DAY CELEBRATION

JUNE 25 | 6:05 PM

GIRLS NIGHT OUT

JUNE 26 | 6:05 PM

NANCY FAUST NIGHT

JUNE 27 | 6:35 PM

DISNEY TRIP GIVEAWAY & PRINCESS NIGHT

JULY 1 | 6:05 PM

#PARTYTIME

POOPSIE'S 4TH BIRTHDAY

JULY 2 | 6:05 PM

MILITARY APPRECIATION

JULY 3 | 6:05 PM

FIRST RESPONDERS NIGHT

JULY 4 | 1:05 PM

BACKYARD BBQ

JULY 24 | 6:05 PM

thrivent

CHRISTMAS IN JULY

JULY 25 | 6:35 PM

Make-A-Wish

JULY 26 | 1:05 PM

BLUEY DAY

JOIN US FOR A BLUEY MEET & GREET!

AUGUST 7 | 6:05 PM

DINO NIGHT

AUGUST 8 | 6:35 PM

STAR WARS NIGHT

AUGUST 22 | 6:35

PACKERS VS. BEARS HOUSE DIVIDED NIGHT

SEPTEMBER 5 | 6:35 PM

NINE INNINGS OF WINNING

WE CREATE MEMORABLE EXPERIENCES

Your Complete Marina Solution on Lake Koshkonong

Full-service marina offering storage, maintenance, dock & lift services, and quality boats. Your trusted partner for all your marine needs in Southern Wisconsin.

Storage: Boat slip rental/boat launch. New and used boat sales. Brands Trifecta, Dockside and Starcraft.

Maintenance: Year-round boat care including engine repair, storage, shrink wrapping, and additional services to keep your boat ready for the water.

Dock & Lift: Comprehensive dock and lift services including installation, removal, storage, recovery, and more, using trusted brands such as Shorestation, Voyager, Max Lift, Wave Armor, and LSP.

The 59er Sip & Swing

Indoor Golf Simulators, Drinks, and Great Food

- Top tracer outdoor golf range
- Golf simulators with TrackMan technology
- 24/7 outdoor driving range
- Bar & grill with full bar service and comfort food
- On-site campground (Stay & Play)
- Event hosting for birthdays, corporate outings, and celebrations
- Camping • Golf • Bar & Grill • Event Hosting



807 Harbor Road, Milton, WI 53563

(608) 884-6007

www.theharboratnewville.com

Hours:

Sunday: 10 AM - 3 PM

Monday: 9 AM - 4 PM

Tuesday - Friday:

8:00 AM - 5:00 PM

Saturday:

8:00 AM - 6:00 PM



- Indoor golf simulators powered by TrackMan technology, the same radar system used by tour pros.
- 24/7 outdoor driving range with automated ball machines for unlimited practice.
- On-site campground for Stay & Play packages, ideal for tournaments, group outings, or weekend getaways.
- Event space for birthdays, corporate outings, and celebrations with food provided.

2209 E Vincent Road, Milton, WI 53563

(608) 554-8124

www.59ersipandswing.com





Lake Koshkonong Fun Begins Here !!!



MUSIC SCHEDULE

JUNE

- 3 Lasagna day! All day!, Allie's Wednesday meat raffle 6:30-7:30
- 4 Jimmy z 6-9
- 5 OTL 7-11
- 6 Caddilav ranch 3-7, Audiodrives 7-11, DJ Karaoke 10-2
- 7 DJ Karaoke 10-2, Allies Big Box raffle 2:30-4, Breaking Cadence 4:05-8:05
- 10 Lasagna day! All day!, Jam Session 6-10, Allie's Wednesday meat raffle 6-7:30
- 11 Sweet sour and spicy 5-9
- 12 ROUGH RIDERS 7-11
- 13 Night fire 2-6 3-7, Sunset strip 6-10 7-10, DJ Karaoke 90s country party wear a costume 10-2
- 14 DJ Karaoke 90s country party wear a costume 10-2, Allies Big Box raffle 2-4, Rainbow bridge 3-7 4-8
- 17 Lasagna day! All day!, Andy Ellefson band 6-10, Allie's Wednesday meat raffle 6:30-7:30
- 18 2 GUYS AND GUITARS 6-10
- 19 Andy Ellefson Band 7-11
- 20 Frank and CO 3-7, The decades 7-11, DJ Karaoke 10-2
- 21 DJ Karaoke 10-2, Allies Big Box raffle 2:30-4, Marcie and the highlights 4-8
- 24 Lasagna day! All day!, Jam Session 6-10, Allie's Wednesday meat raffle 6:30-7:30
- 25 Matt Andrus 6-10
- 26 Wild cards 7-11
- 27 Stereotype 7-11, DJ Karaoke 10-2
- 28 DJ Karaoke 10-2, Allies Big Box raffle 2:30-4, Buck neck Ed 4-8

JULY

- 1 Lasagna day! All day!, Bree Morgan 6-10, Allie's Wednesday meat raffle 6:30-7:30
- 2 Marcie and the highlight 6-10
- 3 Whiplash 6-10

- 4 Hot rod Eddie 1:30 4:30 2:30-5:30, Bree Morgan and the horny Funkers 6-10, DJ Karaoke 10-2
- 5 DJ Karaoke 10-2, Allies Big Box raffle 2:30-4, Breaking Cadence Acoustic 3-6, Blue Steele 6-10 7-8
- 8 Lasagna day! All day!, Jam Session 6-10, Allie's Wednesday meat raffle 6:30-7:30
- 10 Leinenkuehls tap event 4-9, 2 am band 7-11
- 11 Night fire 2-6, Audiodrives 7-11, DJ Karaoke neon party!!!! 10-2
- 12 DJ Karaoke neon party!!!! 10-2, Allies Big Box raffle 2:30-4, frank and co 4-8
- 15 Lasagna day! All day!, 2 GUYS AND GUITAR 6-10, Allie's Wednesday meat raffle 6:30-7:30
- 16 Chad foster 6-10
- 17 Cartunes 7-11
- 18 Andy Ellefson Band 2-6, That 70s band 6-10, DJ Karaoke 10-2
- 19 DJ Karaoke 10-2, Allies Big Box raffle 2:30-4, Leaving scarlet 4-8
- 22 Lasagna day! All day!, Jam Session 6-10, Allie's Wednesday meat raffle 6:30-7:30
- 23 Bree Morgan 5-9
- 24 Ludy and his lady 7-11
- 25 Lounge lizards 3-7, Breaking Cadence 7-11, DJ Karaoke 10-2
- 26 DJ Karaoke 10-2, Allies Big Box raffle 2:30-4, The Decade: an 80s Rock Experience 4-8
- 29 Lasagna day! All day!, Jimmy z 6-9, Allie's Wednesday meat raffle 6:30-7:30
- 30 Elvis tribute 7-10
- 31 ROUGH RIDERS 7-11

AUGUST

- 1 Chad foster 3-7, Motorcycle fundraiser stopping in at 12:30 5-6, Pat Baxter 6-10 7-11, DJ Karaoke 10-2
- 2 DJ Karaoke 10-2, Allies Big Box raffle 2:30-4, Ludy and his lady 4-8
- 5 Lasagna day! All day!, Jam Session 6-10, Allie's Wednesday meat raffle 6:30-7:30

- 6 Danny grams acoustic 6-9
- 7 Night fire 6-10
- 8 Wild cards 3-7, Audiodrives 7-11, DJ Karaoke disco 79s jam party 10-2
- 9 DJ Karaoke disco 79s jam party 10-2, Allies Big Box raffle 2:30-4, Frank and CO 4-8
- 12 Lasagna day! All day!, Allie's Wednesday meat raffle 6:30-7:30
- 13 2 GUYS AND GUITARS 6-10
- 14 Bree Morgan Chillbillies 7-10
- 15 Andy Ellefson Band 2-6, Whiplash 6-10, DJ Karaoke 10-2
- 16 DJ Karaoke 10-2, Allies Big Box raffle 2:30-4, Marcie and the highlights 4-8
- 19 Lasagna day! All day!, Jam Session 6-10, Allie's Wednesday meat raffle 6:30-7:30
- 20 Sweet sour and spicy 5-6
- 21 Planet rocks 7-11
- 22 There and back 2-5 11-12, Mtvees 7-11, DJ Karaoke 10-2
- 23 DJ Karaoke 10-2, Allies Big Box raffle 2:30-4, Rainbow bridge 3-7 4-8
- 26 Lasagna day! All day!, August 29 6-9, Allie's Wednesday meat raffle 6:30-7:30
- 27 Matt Andrus 6-10
- 28 2 am band 7-11
- 29 Lounge lizards 2-6, Cal stage band 6-10, DJ Karaoke 10-2
- 30 DJ Karaoke 10-2, Allies Big Box raffle 2:30-4, Buck necked 4-8

SEPTEMBER

- 2 Lasagna day! All day!, Jam Session 6-10, Allie's Wednesday meat raffle 6:30-7:30
- 3 2 GUYS AND GUITARS 6-9 3:00
- 4 Audiodrives 8-12
- 5 Rough riders 2-6, Saturday morning cartel 6-10, DJ Karaoke 10-2
- 6 DJ Karaoke 10-2, Allies Big Box raffle 2:30-4, breaking cadence 3-7, Blue Steele 6-10 7-8
- 7 Leaving scaler 3-7
- 9 Lasagna day! All day!, Allie's Wednesday meat raffle 6:30-7:30

- 10 Bree Morgan 5-9
- 11 Sweet sour and spicy 6-10
- 12 Stereotype 7-11, DJ Karaoke 10-2
- 13 DJ Karaoke 10-2, Allies Big Box raffle 2:30-4, Frank and CO 4-8
- 16 Lasagna day! All day!, Jam Session 6-10, Allie's Wednesday meat raffle 6:30-7:30
- 18 Mtvees 6-10
- 19 Take a vet fishing 1-2, There and back 4-7, Bree Morgan 7-11, DJ Karaoke. Black and white party costume contest 10-2
- 20 DJ Karaoke. Black and white party costume contest 10-2, Allies Big Box raffle 2:30-4, Rainbow bridge 3-7 4-8
- 23 Lasagna day! All day!, Allie's Wednesday meat raffle 6:30-7:30
- 25 Ludy and his lady 6-10
- 26 OTL band 7-11, DJ Karaoke 10-2
- 27 OTL band 7-11, DJ Karaoke 10-2, Allies Big Box raffle 2:30-4, Marcie and the highlights 4-8
- 30 Lasagna day! All day!, Allie's Wednesday meat raffle 6:30-7:30

OCTOBER

- 3 DJ Karaoke 10-2
- 4 DJ Karaoke 10-2, Ludy and his lady 2-6, Allies Big Box raffle 2:30-4
- 7 Lasagna day! All day!, Allie's Wednesday meat raffle 6:30-7:30
- 9 Jimmy z 6-9
- 10 DJ Karaoke 10-2
- 11 DJ Karaoke 10-2, Allies Big Box raffle 2:30-4
- 14 Lasagna day! All day!, Allie's Wednesday meat raffle 6:30-7:30
- 17 DJ Karaoke 10-2
- 18 DJ Karaoke 10-2, Allies Big Box raffle 2:30-4
- 21 Lasagna day! All day!, Allie's Wednesday meat raffle 6:30-7:30
- 24 DJ Karaoke 10-2
- 25 DJ Karaoke 10-2, Allies Big Box raffle 2:30-4
- 28 Lasagna day! All day!, Allie's Wednesday meat raffle 6:30-7:30
- 31 DJ Karaoke 10-1

Stop in for Lunch Specials!

Beach Bar

Open 7 days a week, music Thursday through Sunday and DJ every Saturday day after the band

Soft Serve Ice Cream

Saturday Night Prime Rib, Lobster

Friday All-Day Fish Fry! Featuring Walleye, Salmon, Bluegill, Lobster Tails & Cod



Families Welcome !!!

Bar and Grill on the Beach Open to the Public with Outdoor Dining/Food and Drink Specials. Come by Boat, Car, Motorcycle, ATV or Plane! (Plenty of parking)

50-30 AMP Service • Camper Rentals - A/C • Sewer Hook-ups • Boat Slip Rental Children's Playground • Beach Front Party Room Available

www.lakeviewcampgroundandbar.com

1901 E. Hwy. 59, Milton, WI • Directions: from I-39/90 - Exit 163 Milton/Edgerton. Take WI 59 east toward Milton - 1 mile. Turn left into Lakeview Campground Bar & Grill driveway

Lakeside Paradise 850 feet of pristine lakefront Breathtaking views Sunset views over Lake Koshkonong

Hometown Albion Tigers compete ten years after winning league championship

By Matt Towns,
Albion Tigers Manager

For millions of Americans, the summer sunshine means one thing - baseball. But while major league turnstiles spin and little league fields echo with the yells of youngsters, baseball fans in the Edgerton area have been visiting the quaint little ballpark in Albion for generations to see something a little different - Home Talent baseball, amateur baseball at its best.

Making their home in the idyllic setting of Albion Park, the Albion Tigers are part of the 40-team Home Talent League, the oldest and largest amateur baseball league in Wisconsin. As the name would suggest, clubs in the Home Talent League primarily draw their players from their local communities, creating a unique connection for their players and supporters not often found at other levels of sport.

Drawing their talent almost exclusively from the successful baseball program at nearby Edgerton High School, the Tigers currently compete in the Southeast Section of the league. There are also Home Talent League ballclubs in nearby Fort Atkinson, Jefferson, Cambridge, Stoughton, and Utica. The Southeast Section schedule, consisting primarily of Sunday afternoon games, starts in May and runs through August. In addition, Albion plays an Eastern Night League game most Wednesday or Thursday nights.

Built on the campus of the old Albion Academy, Albion Park is truly a unique place to spend a day in the park and catch a ballgame. Without an outfield fence to obstruct their view, many fans sit under the shade trees beyond the outfield. Those who like to be closer to the action congregate



Albion first baseman Drew Hanson (right) tosses to pitcher Brian Rusch (left).

Photo by Jeff Brown

nearer the infield on bleachers or lawn chairs and avail themselves of the concession stand, which serves bratwurst, hot dogs, cold drinks, and other items. Indoor restrooms, a playground for the kids, and the overall relaxed atmosphere of the small village park add to the attraction for Tiger fans young and old.

NOT-SO-HUMBLE BEGINNINGS

The original Albion Tigers ballclub was a semi-professional organization in the 1930s. These were some heady times for the little hamlet, as Albion was able to attract players from as far away as Madison, Milwaukee, and Rockford. The farmers and merchants of Edgerton and the surrounding area were no different than most places in America at the time -- they loved and supported their local baseball club, and the weekly games were known to draw up to 2,000 fans on a Sunday afternoon. Unfortunately, the ballclub was disbanded in the early 1940s as the country turned its focus to World War II.

A LONG RUN OF SUCCESS

In 1946, the Albion Tigers were reborn as an amateur outfit, and a year later they

joined the Home Talent League. Under the leadership and management of Albion tobacco and dairy farmer Wally Olstad, Albion established themselves as a lasting power, winning sectional championships and reaching the league's Grand Championship Series in 1953, 1957, and 1976.

The 1953 Tigers, in celebration of Edgerton's centennial, grew out their beards and went down in legend as "The Bearded Tigers" as they pounded their way to the Eastern Section championship. Many of those stars were still around in 1957 when Albion ran through the Eastern Section undefeated only to fall in the league title game 2-1 to Middleton. Wally told an Albion manager many years later that "I had 22 ballplayers on that team. Nobody could beat us."

Wally Olstad would stay with the club until 1985, at which point longtime Tiger standout Larry Buhrow would take over the reins. Olstad compiled 319 wins in his 39 seasons, and was named Manager of the Year twice (1976 and 1981) in addition to his three sectional championships. Wally's name still appears on the hand-



Shane Kisting fields a groundball in the All-Star game last year.

Photo by Jeff Brown

operated scoreboard and a concrete memorial bench in Albion Park.

A NEW MILLENNIUM

The Tigers of the early 2000s again established themselves as a perennial contender in the Southeast Section. After a lengthy postseason drought, they returned to the Southeast playoffs in 2002 and have been back thirteen times since, most recently in 2023. Jim Eastman (2002), Matt Towns (2004), and Ben Towns (2012) have all been recognized as HTL Manager of the Year for their efforts in keeping Albion near the top of the Southeast Section standings.

2011 provided a high point - a Southeast Section title and Albion's fourth trip to the Home Talent League's Grand Championship Series. 2012 brought a 24-4 overall record but saw the Tigers fall one game short of a title repeat. In 2014, the Tigers found themselves one strike away from the Series, only to lose the sectional final to archrival Utica in extra innings.

CHAMPIONS!!!!

Albion broke through again in 2016, and in a big way. Winning their division with a 13-3 record in the Southeast

Section, the Tigers dispatched Clinton with a 4-0 decision in Albion Park. One week later, the Tigers exploded for 8 runs in the last three innings at Fort Atkinson to win a sectional title for the fifth time in their history.

However, the 2016 Tigers were far from satisfied with a trip to the Home Talent League Grand Championship Series. The three-week, round-robin tournament of sectional champions included Albion (Southeast), Monona (East), Wiota (West), and Sauk Prairie (North). After consecutive 4-1 victories against Monona and at Sauk Prairie, the Tigers had set the table for the biggest and most important game in their 71-year history: a home game against Wiota to win an undisputed Home Talent League title. The Tigers would ultimately win a back-and-forth game by the score of 6-5 to set off a celebration in Albion Park that still has not been forgotten.

TODAY'S ALBION TIGERS

The 2026 season will be the 81st season of Albion Tiger baseball, and promises to be as entertaining as any of the previous 80 seasons.

Albion's current roster includes no less than five former or current collegiate



Logan Hanson in action for the Tigers earlier this summer.

Photo by Jeff Brown

players, and while many longtime veteran players have retired, a new batch of recruits has committed to playing for their hometown club. Some of the players key to the success of the last few seasons include Beloit College first-baseman Drew Hanson, slugging outfielder Ethan Stengel, and speedy shortstop Shane Kisting. Veteran support and reliability comes from pitcher/outfielder Brian Rusch, left-handed pitcher Charlie Hatlen, and outfielder Matthew Klubertanz -- all of whom are former Edgerton High standouts.

A batch of recent Edgerton High graduates including Tyler LaSchum and Logan Hanson will surely contribute to any success that Albion may have in 2026 and in the coming years.

A full copy of Albion's 2026 schedule is available below, or by visiting the Tiger webpage. Whether you're a die-hard baseball fan or simply looking for an enjoyable day in the park, there are plenty of reasons to make the trip to Albion for a unique baseball and community experience.

Edgerton Public Library Summer Programming

Submitted by
Beth Krebs-Smith
Library Director

Edgerton Public Library (EPL) has a GIGANTIC summer planned. You might even say it's T-Rex sized! That's because this year's theme for our annual Summer Reading Program is "Unearth a Story," a summer all about dinosaurs, archaeology, and digging into the past.

EPL's Summer Reading Program has something for everyone, ages birth to 102+! First, there's the reading challenge, which allows readers to earn small prizes as they complete their reading tracker and entries to win a larger basket of prizes at the end of the challenge. Teens and children can also earn a ticket to join us at our end of summer pool party at the Edgerton Aquatic Center. For those that want to go the extra mile and be a "Super Reader" by completing every space on the tracker, we'll have a special drawing to win one of two \$100 Visa gift cards. Because reading should be a lifelong activity, adults are encouraged to participate in the challenge, too! Sign up for the challenge begins June 8th and continues through July. Participants can sign up by visiting the library to receive a tracker and brochure with all the details.

In addition to the reading challenge, EPL's staff really steps up their programming game during the summer!



Children can participate in story times, crafting programs, tie dyeing, and some messy art in the park. Programming for teens includes things like games, crafts, and even a real-life "Among Us" game. Adults have the opportunity to participate in book clubs, craft programs, and guest speaker presentations. All ages are invited to the Storywagon series of performers

sponsored by Prairie Lakes Library System. This year's performers include Rope Warrior, Dino Discovery, Snake Discovery, and Na Hale Studios. In addition, Friends of the Edgerton Public Library is sponsoring a performance by The Mammoth Hunter.

This summer, thanks to grant funding from Prairie Lakes Library System, EPL

is also offering a series of programming in partnership with Silverwood County Park called Stories & Soil. One of the things that will be happening from June through September is a Community Garden. The garden will be planted by staff and volunteers on May 30. Throughout the growing season, library patrons are invited to meet staff at the garden to water, weed, and harvest. There are even special days for kids to participate! Anyone at the garden when produce is harvested can claim a share. Any extra produce will be donated to Edgerton Community Outreach's food pantry.

There will be an additional garden plot available to individuals through Stories & Soil. This plot will be divided into 10 blocks of four-square-feet each which can be claimed by individuals by contacting the library to request a space. Individuals will be responsible for planting and tending their garden throughout the summer and will collect 100% of their harvest, though we ask that any excess also be donated to Outreach. Call the library to request a square.

Other aspects of the Stories & Soil series include five gardening talks presented by a master gardener, a mushroom log inoculation workshop, a walk and talk book club (free books available at the library for participants to keep), and Storywalks® along the trails.

Those interested in learning more about the Summer Reading Program or Stories & Soil are encouraged to check out our website at

www.edgertonpubliclibrary.org, stop in at the library (101 Albion Street), or call to speak with one of our friendly staff members (608.884.4511).

For Sale

WATERFRONT HOMES

Better
Homes
and Gardens

REAL ESTATE

DREAM
PARTNERS

Kevin Clark, Broker
608.345.6197
bhgdreampartners.com

VIEW HOMES

KENLYN MARQUIS



Kent Boyles
Owner
608-884-8355

PET RESORT

Maria Oster
Manager
608-884-8355

- Indoor/Outdoor facility
- Large exercise & play areas
- Spacious • Heated A/C

BOARDING
GROOMING
TRAINING
DAYCARE



New Training Classes starting • Call to get enrolled

Choosing Kenlyn-Marquis Pet Resort means opting for a facility that prioritizes the safety and happiness of your pets. Our team of professionals is dedicated to providing personalized care, ensuring that each animal feels at home. Our owner's hands-on approach and our award-winning services reflect our commitment to excellence with a focus on creating a nurturing environment, we offer a range of services tailored to meet the unique needs of your pets. Contact Kenlyn-Marquis today for a comprehensive pet care or training experience that combines expertise, compassion, and reliability.



Mercedes at the U.S. Capitol



Mercedes won Best of Show in Orlando



Rumor won Best of Show at the Westminster Kennel Club Dog Show



Rumor and Statue of Liberty



Wisconsin U.S. Senator Tammy Baldwin



Kent and Liz at the U.S. Capitol



Mercedes with U.S. Senator Tim Cane



Liz with Sassy



Rumor in front of the Statue of Liberty



Rumor on NASDAQ Tower



Rumor at the U.S. Capitol



Maria with Grand Victor Peabo

Easy access off I-90 Exit 163 (Hwy. 59) • 397 E. Hemenway Ln, Edgerton, WI
608-884-8355 • www.kenlynmarquispetresort.com • kenlynmarquis@gmail.com

Jewelry That Feels Like You



Turning Leaf Pendant: the 4 ways to wear

By Whitney Robinson

My name is Whitney Robinson, and I create fine, custom, and one-of-a-kind jewelry for people who want pieces that are versatile, beautiful, and personal.

I grew up in southern Wisconsin, studied art metals at UW-Madison, and moved to Edgerton in 2005 with my husband and started a family. I have spent over 20 years as a goldsmith and custom designer at Studio Jewelers in Madison. What started as a college metals class quickly became the work I love: shaping metal by hand, setting stones with care, and helping people create jewelry that feels meaningful enough to wear for a lifetime.

Each piece I create is inspired by movement and nature: leaves, waves, clouds, wind, horses — all flowing,

sculptural, dynamic things that I find endlessly inspiring. I want my jewelry to have a sense of ease and elegance without being fussy. A ring, pendant, bracelet, or pair of earrings should be easy to wear, not something you have to save for special occasions. My goal is to make pieces that feel both everyday and extraordinary. I do this by setting stones in low-profile mountings that grow organically out of the design, which means you don't have to sacrifice design for wearability.

Lost wax casting is the method by which I find the most creative possibilities. This means I sculpt the actual piece of jewelry in carving wax, getting all the details and proportions right. It is then cast in metal (sterling silver, 14 or 18 karat gold, or platinum), cleaned up with files and abrasives to refine the details, then the stones are set and the



piece is given a final polish.

One of my collections is Turning Leaf; the pendant has a versatile design that can be worn in four ways: vertically or horizontally, front or back. It can also be done in a bi-color version with the gold side holding a stone and the reverse side having a textured leaf pattern in silver, which gives you a refined, sculptural side or a rustic, textured side. So you can wear it with any outfit.

Turning Leaf earrings are also available with or without diamonds and can be worn on their own or paired with removable gemstone drops, making them easy to dress up or down, change, and enjoy often.

I also love custom work. Maybe you have a stone from a piece you no longer wear. Maybe you are celebrating an anniversary, a wedding, a

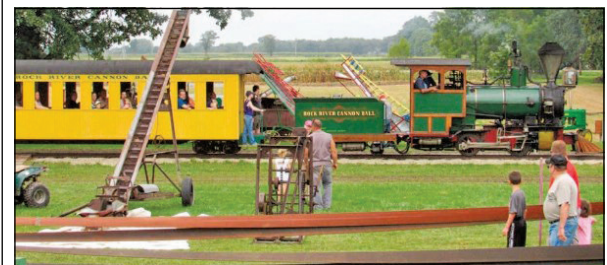
family milestone, or a personal accomplishment.

Or maybe you simply want something that feels more like you than anything you have seen in a jewelry case. We can sit down together, talk through your ideas, and create a design that fits your style, your story, and your life. Each custom piece begins with a conversation. I listen, sketch, refine the design, and help turn your idea into a piece of jewelry that is made to be worn, loved, and remembered.

You can see my ready-to-wear work at Studio Jewelers, 1306 Regent Street in Madison, or explore more at WhitneyRobinsonDesigns.com.

Whether you are looking for a meaningful gift, a fresh way to wear stones you already own, or a one-of-a-kind piece made just for you, I would love to help bring your vision to life.

Roll back through time at Thresheree



By Reporter Staff

This popular, family-friendly annual event has been steaming ahead for more than six decades.

The annual Rock River Thresheree will be held on Labor Day weekend, Sept. 4-7 at Thresherman's Park (51 E. Cox Road) halfway between Edgerton and Janesville.

The Thresheree is an exhibition of farm equipment and techniques from the late 1800s and early 1900s, including hundreds of antique tractors and other machines.

Steam will once again be the order of the day, from the roar and the whistle of the Rock River Cannonball locomotive to the sooty huff and whirring iron flywheels that mark the massive steam traction engines that dominate the event.

Each day at 2 p.m., during the "Parade of Power," steam traction engines manufactured by J.I. Case, Minneapolis-Moline Power Implement Co., Advance Rumley,

and Nichols & Shepherd Co. roll through the park.

Other attractions include a flea market with 300-plus vendors; daily steam pile driver demonstration; blacksmith, wheelwright and wood carving demonstrations; corn shelling; antique car and truck displays; live music; a steam calliope; a museum of agriculture and industry; and much more.

The Thresheree is an outdoor event in a rural setting. You'll be doing a lot of walking if you come, so plan on wearing comfortable shoes and clothes. Don't wear white clothes, especially if you plan on riding the Cannonball. Admission is charged and parking is free. In 1961, the Rock River Thresheree bought the first parcel of land for what would become Thresherman's Park. In 1965 the organization obtained tax-exempt status.

For more information call 608-868-2814 or visit www.thresheree.org.

George Auction Service & Real Estate, LLC

(608) 882-6123

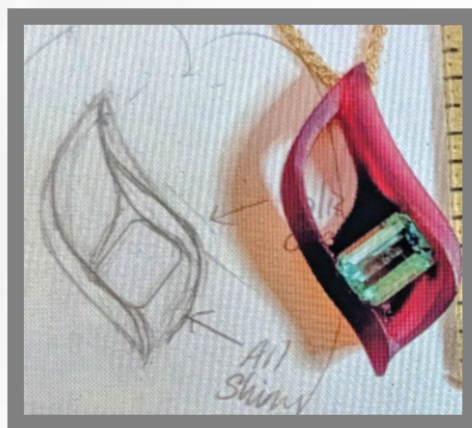
Auctioneers & Realtors:

Dean & Kale George

www.georgeauction.com

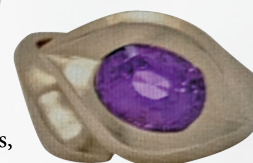
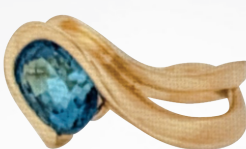


WHITNEY ROBINSON
DESIGNS



The custom journey...

1. It starts with your story! Whitney listens, asks questions and drawings are made.
2. A wax model of your drawing is carved and you meet with Whitney to approve or make modifications of the design.
3. The jewelry is cast in your metal of choice, then hand-finished stones are set, it's polished and it's yours!



Turning Leaf stud earrings 14K yellow gold with diamonds and removable plume agate drops



Turning Leaf stud earrings can be worn with or without drops-the ultimate in versatility!

*The reverse of the pendant in #3 - a Chevron Leaf, so you can wear it two ways!

Chilimania Turns Up the Heat for Year 35

By Sarah Schultz

There are countless ways to spend a late-summer weekend in southern Wisconsin. You can spend the day on the lake, explore small-town communities, enjoy local food and music, or gather with friends and family for one last celebration before autumn arrives.

At Chilimania, you can do all of those things at once!

Returning to downtown Edgerton September 11-12, Chilimania celebrates its 35th year as one of the region's most anticipated festivals. What began as a community chili cook-off has grown into a weekend-long destination event that attracts thousands of visitors from across Wisconsin and beyond while raising money for scholarships and community organizations throughout the Edgerton area.

"It's amazing how Chilimania just gets bigger and better every year," said co-founder Dr. Tom Reitz. "We've learned a lot over the years, but the recipe has stayed pretty simple: great music, great food, great people, and a great community."

That recipe has proven successful. Each year, more than 5,000 people make their way to Edgerton to experience the unique combination of live entertainment, championship chili, local hospitality, and small-town charm that has become synonymous with Chilimania.

For lake visitors spending time throughout the Rock River Valley and Lake Koshkonong area, Chilimania offers the perfect opportunity to extend summer with a weekend unlike any other.



Lauren Alaina headlines Saturday night of Chilimania in 2025.

Photo by Mikey Rottier

Big-time entertainment in small town Wisconsin

While chili may be in the festival's name, Chilimania has become equally known for delivering an entertainment lineup that rivals events many times its size.

The festival's professional concert production, featuring a large outdoor stage, state-of-the-art sound and lighting, and nationally recognized tribute and touring acts, has become a hallmark of the weekend.

Saturday night's headline performance belongs to DEF LEGGEND, widely regarded as one of the world's premier Def Leppard tribute bands. Known for recreating both the sound and spectacle of a Def Leppard concert, DEF LEGGEND has built a reputation across the United States and Mexico as "the next best thing to Def Leppard."

Joining the Saturday lineup are Rock The 90s, a high-energy celebration of the



Young cooks at the Thundergun Express chili booth last Chilimania.

Photo by Mikey Rottier

decade's biggest hits, Billy Elton, an eight-piece tribute to Billy Joel and Elton John, and Wisconsin's own Cactus Mother, bringing their signature blend of psychedelic outlaw country to the Chilimania stage.

Country Edge Kicks Off the Weekend

Friday night's Country Edge concert has quickly become a fan favorite since its introduction and returns bigger than ever in 2026.

This year's headliner is multi-platinum country star Dylan Scott, one of the genre's hottest artists. With nearly five billion career streams, multiple No. 1 singles, sold-out tours, and a growing national fanbase, Scott brings a headline-caliber performance to downtown Edgerton.

Supporting Scott is IV Play, one of the Midwest's premier party bands, along with returning crowd favorite Jason Stubbs, who will once again travel from Ireland to be part of the Chilimania weekend.

Country Edge was created to expand the festival experience and provide country music fans with their own unforgettable night of entertainment. Today, it serves as the perfect kickoff to a weekend packed with excitement.

The Chili Still Comes First

Of course, no Chilimania would be complete without the chili.

The festival remains home to Wisconsin's state championship Chili Appreciation Society International (CASI) cook-off, along with traditional chili competitions, salsa contests, and the always-popular showmanship competition.

Cook teams transform their spaces into elaborate themed camps featuring decorations, costumes, skits, and creative displays that entertain visitors throughout the day.

One of the most anticipated moments arrives Saturday at 3 p.m., when thousands of attendees flood the grounds for the public tasting.

Armed with tasting cups and ballots, guests sample entries from dozens of competitors before casting their votes for the coveted People's Choice Award.

The tasting has become so popular that thousands of samples are often gone within an hour.

More Than Chili

Even the most dedicated chili enthusiast needs a break now and then.

Visitors will find a variety of food vendors serving everything from barbecue and burgers to pizza, snacks, and sweet treats throughout both Country Edge and Chilimania weekend.

The Busch Light Beer Garden returns as a popular gathering place, offering beer, cider, wine, and other beverages for guests 21 and older.

Families will find a welcoming atmosphere throughout the festival grounds, making Chilimania a destination that appeals to every generation.

A Festival With Purpose

What truly separates Chilimania from many festivals is where the proceeds go.

Since its founding, Chilimania's mission has been to support the education of Edgerton students. Thanks to continued community support, the organization has awarded more than \$350,000 in scholarships to graduating Edgerton High School seniors.

Following the success of the 2025 event, Chilimania awarded 12 scholarships this past spring, the largest scholarship distribution in the organization's history.

Additional proceeds are reinvested into local nonprofits, youth programs, community organizations, and charitable initiatives throughout the area.

Every ticket purchased,

every bowl sampled, and every concert enjoyed helps make a difference right here in southern Wisconsin.

Plan Your Visit

Whether you're a longtime attendee, a lake-area visitor looking for a memorable weekend, or someone discovering Chilimania for the first time, there's never been a better time to experience one of Wisconsin's most unique community festivals.

Feel the Heat. Hear the Music. Join the Cause.

New for 2026, Chilimania has partnered with Eventeny to make planning your weekend easier than ever. Through Eventeny, attendees can purchase tickets, explore the full schedule of events, browse an interactive festival map, view the chili cook-off layout, discover food truck offerings and menus, shop official merchandise, preview auction items, make donations, and access important event information all in one convenient place.

For the best experience, attendees are encouraged to download the Eventeny app before arriving. With festival information available right at your fingertips, it's the easiest way to navigate everything Chilimania has to offer throughout the weekend.

Tickets, VIP packages, event schedules, and complete festival information are available now at ChiliMania.com.

Chilimania and Country Edge take place September 11-12, 2026, in downtown Edgerton. We invite visitors from throughout Wisconsin and beyond to experience the music, flavor, hospitality, and community spirit that have made Chilimania a late-summer tradition for 35 years.

EDGERTON, WI

THE ORIGINAL

SEPTEMBER 11TH & 12TH

Chilimania

FRI | SEPTEMBER 11

SAT | SEPTEMBER 12

FEATURING MULTI-PLATINUM COUNTRY SINGER SONGWRITER

DYLAN SCOTT

IV PLAY | JASON STUBBS



ROCK THE 90's BILLY ELTON | CACTUS MOTHER

SATURDAY'S STATE CHAMPIONSHIP CASI CHILI COOK OFF TASTING STARTS AT 3PM

TICKETS AND FULL EVENT DETAILS CHILIMANIA.COM

FEEL THE HEAT. HEAR THE MUSIC. JOIN THE CAUSE.

East Troy Electric Railroad is Listed on the National Register

Submitted by Kevin Jensen

The East Troy Electric Railroad Historic District, a seven-mile-long rail corridor located in East Troy and Mukwonago, Wisconsin, has been officially listed in the National Register of Historic Places by the National Park Service.

Constructed in 1907 by The Milwaukee Electric Railway and Light Company, the railroad is the last remaining segment of the once extensive interurban electric passenger railroad system serving southeastern Wisconsin. It provided affordable passenger service between cities and towns before widespread use of the automobile. It also facilitated economic development by bringing electricity to business, industries, farms, and homes, and providing freight service to East Troy.

"This designation is a tremendous honor that recognizes the unique nature of our historic railroad, including the vital role The Milwaukee Electric Railway and Light Company played in the region's development," said East Troy Railroad Museum Chairman Steve Thomas. "The East Troy Electric Railroad provides an important link to the past. Not only does it represent a part of local history, but the rail corridor provides the experience of passenger travel by electric rail still today."

The rail line was built by The Milwaukee Electric Railway and Light Company in 1906-07 under its Muskego



Car 13 and Car 26 in East Troy.



East Troy Postcard from 1911.



Car 846 at Depot.



Car 30 on the Line.

Lakes Division and fully opened for passenger service in 1907. This electric interurban rail system was part of TMER&L's network of over two hundred miles of track in southeastern Wisconsin. Because there were no competing railroads serving East Troy, TMER&L also offered freight transportation service, which led to the growth of industry in the area. In 1909, the brick, Neoclassical substation building was completed in

East Troy.

The use of restored historic rolling stock, most notably the passenger cars, the rail system, and its historic landscape, provide an authentic experience to visitors. The landscape's composition of grade fill and cuts, powerlines, and other features, and the substation museum in East Troy, convey what passengers on the train would have experienced during the first part of the 20th Century. These features

work in unison to make the East Troy Electric Railroad Historic District unique in Wisconsin.

The National Register of Historic Places is a function of the National Historic Preservation Act, established in 1966, to recognize sites and buildings that are important to our heritage. The program provides for rehabilitation tax credits and grants for qualifying work to homeowners and for-profit and non-profit entities, including churches and municipalities, respectively.

Properties are nominated to the National Register through the Wisconsin Historical Society, which listed the East Troy Electric Railroad Historic District on the State Register of Historic Places earlier this year. Listing in the National Register further honors the railroad.

STROLL THRU ARTS IN PARK CRAFT & GIFT FAIR

Saturday, July 18 • 9am-2pm



- Crafts
- Home Business
- Food
- Music
- Pie & Ice Cream
- Bake Sale

Albion Park in Albion, 3 miles N of Edgerton
Free Parking Nearby

This is a fundraiser for playground equipment and school scholarships

Hot Diggly DOGS

WHAT ARE YOU CRAVING?

★ JUMBO DOGS & BRATS ★

<div style="text-align: center;"> <p>JUMBO ALL BEEF DOG \$5</p> <p>1/4 lb all beef hot dog served on a fresh bun</p> </div> <hr/> <div style="text-align: center;"> <p>WISCONSIN DOG \$7</p> <p>Cheese sauce, sautéed peppers, fried onions</p> </div> <hr/> <div style="text-align: center;"> <p>CHILI CHEESE DOG \$8</p> <p>Loaded with hearty chili & melted cheese</p> </div> <hr/> <div style="text-align: center;"> <p>CHICAGO DOG \$8</p> <p>Sports peppers, pickle, green relish, tomato, onions, celery salt & mustard</p> </div>	<div style="text-align: center;"> <h3>★ BRATS ★</h3> </div> <div style="text-align: center;"> <p>JOHNSONVILLE BRAT \$5</p> <p>Premium Johnsonville brat</p> </div> <hr/> <div style="text-align: center;"> <p>PACKER BRAT \$7</p> <p>Caramelized onions, sautéed yellow & green peppers, Dijon mustard</p> </div>
--	---

★ KIDS MENU ★

KIDS DOG COMBO \$6

1/8 lb all beef hot dog
Includes chips & drink

MAKE ANY DOG A COMBO FOR ONLY \$2

INCLUDES CHIPS & DRINK

MONDAYS - FRIDAYS
11AM - 2PM ONLY

★ CRAVING SOMETHING DELICIOUS? ★

512 N Main Edgerton, WI

608-884-0550

cravingconcepts.com

Deerfield, WI

Evansville, WI

Edgerton, WI

NelsonTruss Edgerton, WI

Quality Materials • Excellent Service

Edgerton: 608-884-3316
Evansville: 608-882-5997 Deerfield: 608-764-8608
Nelson Truss: 608-884-6141

NELSON - YOUNG LUMBER COMPANY

“Serving Southern Wisconsin for over 100 Years”

www.nylumber.com

No Flight Required - Minnesotans Can Now Snorkel in the "Ocean"



Snorkeling in SEA LIFE at Mall of America.



Snorkeling in SEA LIFE at Mall of America.

Submitted by John Sullwold

Minnesota.

June 8, was World Oceans Day and Minnesota is technically hundreds of miles from the ocean, but locals can enjoy the ocean with no flight required. The snorkel program is back this summer in SEA LIFE at Mall of America and gives guests the chance to have a tropical adventure and come face-to-fin with hundreds of tropical fish including sharks right here in

Perfect for summer, the experience offers a rare opportunity to go into one of the underwater exhibits, Rainbow Reef, with a guided snorkel led by expert educator. The ultimate mini tropical staycation where you can save money and time by skipping the flight and still experience the magic of the ocean and see tropical marine life up close without leaving the state.

Edgerton explores international tourism opportunity with proposed 'Rascal Trail'

By Mikey Rottier
Special to the Reporter

A new tourism concept aimed at connecting southern Wisconsin to Japan and celebrating a beloved literary legacy is in the works in Edgerton.

Andrew Seaborg, honorary consulate to Japan, is leading an initiative with help from "Starring Rascal" author John Foust, former Wisconsin Technology Council president Tom Still, the Edgerton Chamber of Commerce and the Sterling North Society.

The "Rascal Trail" idea is to create a statewide network of destinations tied to Sterling North, his life in Edgerton, and broader elements of Wisconsin history and culture. The effort is designed not only to boost local tourism, but also to build on a surprisingly deep connection between Wisconsin and Japan.

Interest in the project has been fueled in part by the enduring popularity of Rascal in Japan, where it was adapted into a widely recognized animated series in the 1970s. That adaptation, along with continued broadcasts and merchandise, has kept the story alive for decades overseas.

Seaborg and members of the Chamber and Sterling North Society shared examples of that enthusiasm, including the story of a Japanese journalist who completed a through-hike of Wisconsin's Ice Age Trail and gained a large following while documenting the experience. Others described visitors from Japan making trips to Edgerton specifically to see sites tied to the book, sometimes with deeply emotional reactions.



Andrew Seaborg, right, Tom Still, middle, and John Foust, left, met with members of the Edgerton Chamber of Commerce and Sterling North Society on Thursday, April 23 at Culver's in Newville to discuss the proposed Rascal Trail.

Edgerton chamber president Diane Everson recalled accompanying a Japanese visitor to the location where Rascal was released in the story.

"He broke down and cried," Everson said. "If I hadn't seen it myself, I wouldn't have believed it."

The proposed Rascal Trail would link multiple sites across Wisconsin, including Edgerton, Door County, and other locations referenced in North's life or connected through related cultural themes.

Stops along the trail could highlight not only Rascal, but also other Wisconsin figures and attractions, from Laura Ingalls Wilder to Frank Lloyd Wright. The goal is to create a broader narrative of Wisconsin culture while using Rascal as the central anchor.

Edgerton, as North's hometown, would play a key role.

According to Seaborg, the project has already drawn interest from Japanese organizations and officials. Representatives said both Japan's Ministry of Foreign Affairs and Ministry of Economy, Trade and Industry

have expressed support for tourism initiatives tied to anime and cultural exchange.

There is also potential for high-level engagement, with discussions about inviting Japanese diplomatic representatives to visit Wisconsin and the proposed trail.

Additionally, organizers are working to deepen cultural ties. One initiative includes donating curated "Libraries of Japan," described as collections of books about Japanese culture, to library systems across the state, including a planned donation to the Edgerton Public Library.

Seaborg also added that funding for early development, including branding, marketing, and digital infrastructure, is being supported by private partners including Great Dane. Revenue generated from merchandise and related efforts would go toward maintaining trail infrastructure and supporting local organizations like the Sterling North Society.

The plan also includes potential events, such as a "trail week" tied to existing community gatherings, and interactive elements like

stamp rallies or geocaching to encourage visitor engagement.

Organizers acknowledged the need to navigate intellectual property concerns carefully, particularly regarding adaptations of Rascal. The project is being framed as "inspired by" the original work, with an emphasis on avoiding unauthorized use of copyrighted imagery or branding.

At the same time, there is optimism about collaboration with rights holders and Japanese animation companies, especially with the 50th anniversary of the anime adaptation approaching in 2027.

While the Rascal Trail concept is still in development, organizers said a website is nearly ready to launch and could go live in the near future. Discussions are ongoing about the best timing for a formal rollout, potentially tied to existing summer events in the area.

"This is about creating something that stands on its own," Seaborg said, "but also connects people from Wisconsin to Japan through a story that still resonates."

GREAT DEALS — 5 STORES!

Shop Local. Shop Online.

Support Edgerton Community Outreach

EDGERTON OUTREACH THRIFT STORE
Open Everyday For Everybody

FEELS LIKE HOME BOUTIQUE
Boutique & Vintage Finds

ETSY STORE
Shop Online 24/7
Unique Items

POSHMARK STORE
Shop Online 24/7
Fashion Finds

EBAY STORE
Shop Online 24/7
Treasures & Collectibles

Edgerton Outreach serving those in need



106 S. Main Street Edgerton, WI 53534

608-884-9593



edgertonoutreach.org

SHOP DONATE VOLUNTEER

Every Purchase Supports Community Programs

Race in action at Jefferson Speedway this summer



By Mikey Rottier
Special to the Reporter

Jefferson Speedway in Cambridge, also known as Wisconsin's Action Track offers thrilling racing events all summer long.

Jefferson Speedway hosts their regular season racing program on Saturday nights, featuring races from a mix of their seven stock car divisions. Late Model, Hobby Stock, Sportsman, Legends, Bandoleros, Bandits and Internationals.

Qualifying laps begin at 4 p.m. and the first scheduled race takes off at 6 p.m.

In addition to the track's regular programming, several special events such as the Tournament of Destruction (TOD), a demolition derby style night of racing with different events such as spin to win, chain race, trailer race and donut bubble race.

TOD will be held on select Sundays throughout the summer including July



3, Aug. 1 and Sept. 6.

Also catch Jefferson Speedway's Track Attack nights, which gives fans the opportunity to take their own modified car on the track and navigate their way through a time trial course. Track Attack is held on select Fridays including July 10, Aug. 14 and Oct. 2.

Depending on the event, admission ranges from \$15-20 for adults, \$12-14 for 62+ seniors, students ages 12-15 get in for \$8-10 and kids under 8 get in for free.

Enjoy stock car racing at Jefferson Speedway every weekend this summer, located at W8135 US-18 in Cambridge.

Jefferson County Fair Announces 2026 Kidz Zone and Family Entertainment

Submitted by
Sammy Garvey

The Jefferson County Fair is a place for all ages, and this year's lineup is packed with activities sure to keep kids and families entertained all week long. Throughout the week, fairgoers can enjoy kid-friendly entertainment, hands-on experiences, and fun designed for the whole family.

The 2026 theme, "Let the Good Times Grow," reflects the Fair's agricultural roots while celebrating the energy and tradition of summer in Jefferson County. This year's event will feature live music, animal showcases, motorsports attractions, and activities both in the Kidz Zone and around the grounds to keep every member of the family engaged!

Kidz Zone Lineup

The Fair features the Kidz Zone – an area dedicated for youth to run around and enjoy being a kid! The Zone this year features fresh activities and traditions that the family has loved for generations, and all of these Kidz Zone events are FREE with admission! Check the website for a list of performance times; each activity has multiple shows throughout the day!

Pier Pups

This dock-diving attraction features dogs of all skill levels participating in jumping competitions throughout the day. Shows highlight a variety of breeds and handlers, with seating available near the splash zone for spectators.

Great American Duck Races

The Great American Duck



Kids enjoying a ride at the Jefferson County Fair.
Submitted photo



Dock diving competition at Jefferson County Fairgrounds.
Submitted photo

Races feature live duck races held multiple times daily. Audience participation is incorporated into the event, with select attendees assisting during races.

Agri-Golf

Agri-Golf combines miniature golf with agriculture-themed obstacles and educational elements. The eight-hole course is designed for youth and family participation.

Doc's Magic Variety Show

Doc's Magic Variety Show includes magic acts, comedy routines, balloon creations, and audience interaction during each performance.

Race into Scouting with a LEGO Derby!

Hosted at the Scouting America tent, this activity allows participants to design, build, and race LEGO vehicles. The event is open to both youth and adults.

Activities for Kids Throughout the Fair

In addition to the Kidz Zone, families can enjoy events and entertainment throughout the fairgrounds all week long.

DJ Dance Party

The DJ Dance Party, hosted by DJ Carson, will feature music, dancing, and family-friendly entertainment during an evening event at the WSLD Community Stage.

Queen City Circus

Queen City Circus will present multiple performances daily featuring acrobatics, juggling, balancing acts, and stunt entertainment designed for audiences of all ages.

Teas & Tiaras

Children ages 3-10 are invited to dress up and attend this tea party-themed event featuring activities, snacks, appearances by Fair royalty, and a parade through the fairgrounds.

Pre-Registration is required, begins on June 1st, and will close once all spots are filled!

Creation Station

Located inside the air-conditioned Activity Center, the Creation Station offers hands-on building activities and creative play opportunities for youth throughout the day.

Gizmo D. Robot

Gizmo D. Robot will make appearances throughout the fairgrounds during the week, interacting with fairgoers during roaming performances.

There are even more activities, entertainment options, and attractions planned throughout the week. A full schedule of events and details about the 2026 Fair can be found at JCoFair.com.

Wisconsin's Hidden Gem

Craft spirits, cocktails & unforgettable events.

- Craft Cocktails
- Outdoor Patio
- Live Events



American Players Theatre: Winner of the 2026 Tony Award for Regional Theatre

American Players Theatre is a bit of a surprise. Offering world-class theater on 110 wooded acres near the village of Spring Green, Wisconsin (population 1,500), APT produces nine plays in rotating repertory from June through November – five in 1,075-seat, outdoor Hill Theatre and four in the intimate 201-seat indoor Touchstone Theatre.

This summer, APT offers some treasured favorites in the outdoor amphitheater, including William Shakespeare's joyful comedy *As You Like It* and an adaptation of The Two "Gentlemen" of Verona, brought to life by Aaron Posner and Greg Kotis, writer of the Tony Award-Winning musical *Urinetown*. Also making a return trip to the Hill, Thornton Wilder's charming comedy *The Matchmaker*. In the newcomer category, APT will present Anton Chekhov's *Uncle Vanya*, and rounding out the Hill season is the bawdy fairy tale *Sueño* by José Rivera, an homage to the 17th Century play *Life is a Dream* by Pedro Calderón de la Barca.

Back indoors, the Touchstone Theatre kicks off the season with Eugène Ionesco's wild absurdist tragicomedy, *The Chairs*, which is nearly sold out. Next up is Nick Green's funny, tragic, beautifully human Casey and Diana, and the summer season inside closes out with Dontrell, *Who Kissed the Sea*, a mythic, modern-day odyssey by Nathan Alan Davis.



As You Like It, 2026.

A Bit of History

In 1978, a small group gathered on a farm near Spring Green, Wisconsin. One person walked to the base of a steep hill and began to read. After looking at 43 sites, this was the one. The founders, Randall Duk Kim, Anne Occhiogrosso and Charles Bright, had found the spot that was to become American Players Theatre. The mission was to perform the classics, especially the works of Shakespeare, outside, under the sun, moon and stars. On July 18, 1980, American Players Theatre staged its first production: William Shakespeare's *A Midsummer Night's Dream*.

If building a theater in a remote community is a challenge, developing and sustaining an audience was even more daunting. But word spread quickly about this very special venue and the quality of the work. By its second season, the stage was home to a mix of five

Photo by Michael Brosilow.

Shakespearean comedies, histories and tragedies. Since then, the company has performed a steady mix of the greatest works ever written for the stage.

In 2009, APT added the 200-seat indoor Touchstone Theatre, which allowed the opportunity to extend the season and expand the dramaturgy. And in 2017, APT finished its biggest construction project to date: a complete \$8 million renovation of the stage, backstage and lobby at the flagship outdoor Hill Theatre.

Today, American Players Theatre draws an annual audience of more than 110,000 people from around the country and has earned a national reputation for presenting theater of the highest quality, which Wall Street Journal arts critic Terry Teachout has called "America's best classical theatre festival."

The Core Acting Company

A forest 40 miles from the



Midsummer: Joshua Castille and Casey Hoekstra, A Midsummer Night's Dream, 2025.

Photo by Hannah Jo Anderson.



Picnic: Audiences enjoying a pre-show picnic on APT's acreage.

Photo by Hannah Jo Anderson.

nearest city is a surprising venue for world-class theater. But APT draws talent from around the country, both on stage and behind the scenes. Including a core group of actors at the heart of the company – artists who could work anywhere, but have decided to make APT their collective artistic home. Having worked together for years on our stage and

others, they have a chemistry that's hard to match, and they put every ounce of it into these stories.

The stories they tell are something to behold. Some of the plays well-known favorites, and others are stories seldom told. Regardless of which category they fall into, they're all stories these artists are thrilled to tell.

Destination, Spring Green

There's something just a little otherworldly about APT's hometown. In part, it's the land - known as the Driftless Area, it's replete with rolling hills and stony bluffs, artfully divided by the Wisconsin River. We can thank the glaciers for all of this. Or rather, we can thank them for gliding strategically around this little slice of the heartland, leaving Spring Green and the surrounding area completely unique in the region.

But it's not just the place. It's the atmosphere that comes with it. The subtle thrill of being part of a perfect summer day. It's the people - the eclectic mix of arty and earthy that runs through the people who comprise this community. Creative people like Frank Lloyd Wright, who chose to make Spring Green not just his home, but the home of his architecture school, Taliesin, located just up the road from APT. Sure, it's a bit off the beaten path. A tad shy of the typical mint-on-the-pillow amenities you might find in more cosmopolitan areas. But what Spring Green has to offer is something a little harder to come by, and a lot harder to replicate.

For tickets and information, visit americanplayers.org, or call the Box Office at 608-588-2361.

AMERICAN PLAYERS THEATRE

SPRING GREEN, WI

WINNER OF THE 2026 REGIONAL THEATRE TONY AWARD

RUN AWAY TO THE WOODS

AMERICANPLAYERS.ORG | 608-588-2361

Welcome to EDGERTON



**Serves Breakfast
and Lunch**



1102 N. Main St.
Edgerton, Wisconsin
608-884-0042

Hours:
Monday - Friday: 6:00AM - 2:00PM
Saturday & Sunday: 6:00AM - 2:00PM



Welcome to Edgerton



We deliver Homemade Pizza

Hours Mon-Fri 3-10 • Sat-Sun 11-10

Best Pizza Around!

Great Drinks & Friendly
Staff, Dine In,
Carry Out & Delivery.

Outdoor Patio & Stage
Shared with 2 Brothers
Open daily 3pm-Close



**1/2 Price
pizza Monday**
Dine in only

**Live
Music**



**Bar Hours M-F 3-2
Sat-Sun 11-2**

124 W. Fulton St., Edgerton
WI 608-884-0211



**VOTED
BEST BURGER
IN THE
KOSHKONONG
AREA**

Enjoy summer here with your friends!

Spacious Patio with Outdoor Stage

Prime Rib on Fri and Sat



**A favorite amongst locals
for food & fun!**

Awesome burgers,
sandwiches & fish fry.
Outdoor Patio & Stage
Shared with The Red Baron.
Open daily 10am-Close
**Live Band every Friday
and Saturday all summer**

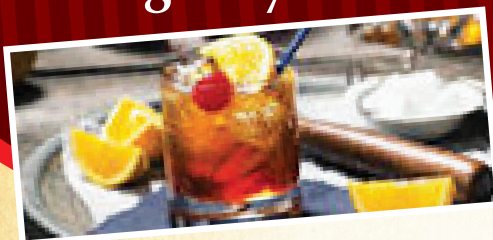
Happy Hour 3 - 6 pm
Mon. - Thurs.

\$2.75 Domestic Bottle Beers
\$3.75 Rail Drinks shorts
\$3.00 Bomb Shots
\$5.00 Captain/Tito tall

116 W. Fulton St., Edgerton • 608-884-3088

Welcome to Wisconsin

We are glad you are here!



Book your private party with us.
One of the largest wine selections in the area

Brand New Edgerton Destination Select Wisconsin products

Wisconsin craft beers, wine and cheese boards featuring Wisconsin Cheese and Sausage
Be prepared to be impressed with Wisconsin!



Please contact

Urim for Bookings 609-718-1545

112 W. Fulton St., Edgerton • 608-884-0242



2026 SKY CARP THEME NIGHTS

JUNE 21 | 1:05 PM

**FATHER'S DAY
CELEBRATION**

JUNE 25 | 6:05 PM

**GIRLS NIGHT
OUT**

JUNE 26 | 6:05 PM

**NANCY FAUST
NIGHT**

JUNE 27 | 6:35 PM

**DISNEY TRIP
GIVEAWAY
& PRINCESS NIGHT**

JULY 1 | 6:05 PM

#PARTYTIME

**POOPSIE'S
4TH BIRTHDAY**

JULY 2 | 6:05 PM

**MILITARY
APPRECIATION**

JULY 3 | 6:05 PM

**FIRST RESPONDERS
NIGHT**

JULY 4 | 1:05 PM

**BACKYARD
BBQ**

250

JULY 24 | 6:05 PM

thrivent

**CHRISTMAS
IN JULY**

JULY 25 | 6:35 PM

Make-A-Wish.

JULY 26 | 1:05 PM

**BLUEY
DAY**

JOIN US FOR A
BLUEY MEET & GREET!

AUGUST 7 | 6:05 PM

**DINO
NIGHT**

AUGUST 8 | 6:35 PM

**STAR WARS
NIGHT**

AUGUST 22 | 6:35

**PACKERS VS. BEARS
HOUSE DIVIDED
NIGHT**

SEPTEMBER 5 | 6:35 PM

**NINE INNINGS
OF WINNING**

WE CREATE MEMORABLE EXPERIENCES

Summer Fun

Events and Happenings Near You!



ONGOING EVENTS & HAPPENINGS

Ongoing-JANESVILLE

Crafting Excellence: Pauline Pottery and Pickard China: Exhibit at the Helen Jeffris Wood Museum Center, 426 N. Jackson St. Pauline Pottery and Pickard China are showcased through selected artists and their distinctive styles. Hours are Thursday-Saturday, 10 a.m. to 4 p.m. 608-756-4509, www.rchs.us

Fridays, May 22-Sept. 4-BELOIT

Friday's in the Park: Free summer lunchtime concert series, 11:30 a.m. to 1:30 p.m., Bank First Plaza, corner of State Street and Grand Avenue. Enjoy live music and lunch from local eateries. 608-365-0150, www.downtownbeloit.com

Saturdays, May-Oct.-BELOIT

Downtown Beloit Farmers' Market: Saturdays, 8 a.m. to 1 p.m., downtown Beloit. More than 85 vendors weekly with produce, baked goods, flowers, meats, cheese, eggs, artisan items and more. 608-365-0150, www.downtownbeloit.com

Memorial Day-Labor Day-JANESVILLE

Rock Aqua Jays Water Ski Shows: Free water ski shows at Bank First Stadium in Traxler Park, 600 N. Main St. Shows are generally Wednesday and Sunday evenings, 7 p.m. through mid-August and 6:30 p.m. lat-



er in the season. Weather and tournament schedules may affect dates. 608-757-3171, www.rockaquajays.com

Early April-Early Sept.-BELOIT

Beloit Sky Carp Baseball: The Beloit Sky Carp, High-A affiliate of the Miami Marlins, play at ABC Sup-

ply Stadium. Check website for home game dates, promotions and ticket information. 608-362-2272, www.milb.com/beloit

Select dates-RURAL MILTON

Lobster Boils at Buckhorn Supper Club: Advance

Continued on next page

CAUTION: TALLMAN TOURS CONTAIN FUN!

IT ALL STARTS IN JANESVILLE
Freshly curated, hands-on experiences

If you haven't toured the Lincoln-Tallman House lately, it's time to revisit! Take the Traditional Tour and learn the secrets of the Tallman family and their most famous guest. Or, roll up your sleeves and see life from the help's perspective in the Help Wanted Tour.

FUN FOR ALL AGES!



2026 Events

- August 1-2 Tallman Arts Festival
- September 24 Vintage Voices Through Time
"Progressive Cocktail Fundraiser"
- October Spirits in the Night Season
- October 10 America 250 Presidential Run



For More Information Visit:
www.rchs.us or Call 608-756-4509
426 N Jackson St, Janesville, WI 53548

Rotary Botanical Gardens announces 2026 programming



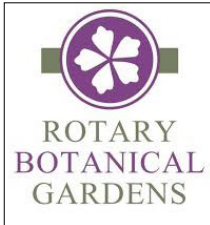
By Rotary Botanical Gardens

Families are invited to explore, create, and discover together at Rotary Botanical Gardens as the Education Department announces its 2026 calendar of children and family programs.

New this year is Once Upon a Garden, an imaginative early-learning series for children and their grown-ups that blends storytelling, movement, and creative activities inspired by the natural world. Young participants will listen to engaging stories and bring them to life through play and art in the Gardens.

Families can also enjoy the return of Story n' Stroll, combining literacy and outdoor exploration, and Me and My Big Classes, a special intergenerational series where children and their adults create side-by-side. Offerings include a butterfly tagging demonstration, ceramics projects with both large and small pieces, and collaborative paint-and-pour art experiences.

Seasonal highlights include:



Summer Art Camp (Ages 6–12): Multi-day creative camps filled with art, nature inspiration, and garden exploration.

Summer Water Adventure Day (Ages 9–12): A science-focused adventure exploring water ecosystems and outdoor discovery.

Garden Explorers Program for Community Organizations: Field trip experiences designed for youth groups and agencies, blending science, nature, and creativity.

Curiosity Camp: A Hands-On STEAM Summer Series. Interactive sessions for various ages exploring bubbles, plants, light and shadow, butterflies, and more through fun experiments and projects.

"These programs are designed to bring families together while encouraging kids to explore the world around them," Kim Lewis, education specialist at Rotary Botanical Gardens, said in a release. "We want every child to leave feeling creative, confident, and connected to nature."

More information is at rotarybotanicalgardens.org/events.



Everyone is welcome at ACE's Concerts In the Park! We look forward to seeing you in beautiful Central Park this summer. (Submitted)

Edgerton Summer Concert Series kicks off June 10

Submitted by Kirsten Almo ACE member

The Arts Council of Edgerton is thrilled to announce the lineup for the 2026 summer Concerts in the Park series!

Bring a lawn chair and get ready to relax and tap your feet as you enjoy six evenings of wonderful music. Concerts will be held at the Menhall Gazebo in Central Park as they have in past years. Music starts at 6:30 p.m. Various local non-profit organizations will be offering food concessions at all of the concerts from 5:30-7:30 p.m., so come early and enjoy a picnic dinner!

June 10 - Date Night

70s Rhythm & Blues with plenty of horns

June 24 - Orquestra Salsoul Del Mad

Bringing together the fire of Latin rhythm and the groove of soul

July 1 - Chicken Wire Empire

Wisconsin-based bluegrass band known for their dynamic musicality,

thorough arrangements, and true-to-life songwriting

July 15 - 1st Brigade Band

Celebrating musical history - Civil War era music played on antique instruments

July 29 - Edgerton Community Band

Local musicians performing a wide variety of concert band music.

August 12 - Krause Family Band

Four piece Americana band known for their organic sound and close family harmonies

August 26 - Make Up Date (or additional concert)

The Concerts in the Park series is sponsored by the Arts Council of Edgerton (ACE). ACE has been dedicated to promoting the arts in the Edgerton area for over 20 years. With the generosity of so many volunteers and sponsors, these events are able to happen at no cost to the community. A special thanks to the Wartmann Endowment for the Performing Arts for their especially generous contribution.

Hope to see you at the park!

EVENTS continued from previous page

reservations and payment required. Space is limited. Cash bar opens at 5 p.m., dinner served at 6:30 p.m. On Lake Koshkonong, 11802 N. Charley Bluff Rd. 608-868-2653, www.buckhornsupperclub.com



13-14-CAMBRIDGE

Midwest Fire Fest: A free outdoor festival celebrating art created with fire, heat and smoke, including clay, metal arts, welding, forging, hot glass, food and performance. Features demonstrations, fire performers, live music and family-friendly activities. West Side Park and downtown Cambridge. www.midwestfirefest.com

23-24-RURAL MILTON

Lobster Boil at Buckhorn Supper Club: Advance reservations and payment required. Space is limited. Cash bar opens at 5 p.m., dinner served at 6:30 p.m. On Lake Koshkonong, 11802 N. Charley Bluff Rd. 608-868-2653, www.buckhornsupperclub.com

26-27-JANESVILLE

Star Spangled Saturday/America 250 Weekend: The Rock Aqua Jays help present Independence Day festivities at Traxler Park, including Great Lakes Watercross races, amusement rides, food vendors, a Rock



Aqua Jays ski show and fireworks at dusk. Traxler Park, 600 N. Main St. 608-757-3171, www.rockaquajays.com



1-5-STOUGHTON

100th Stoughton Fair: Free community fair with midway rides, commercial exhibits, food, 4-H/FFA exhibits and grandstand entertainment. Mandt Park, 400 Mandt Parkway. 608-873-4653, www.stoughtonfair.com

3-EDGERTON

Edgerton Lions Fireworks Festival: Annual Independence Day celebration featuring live music, kids' activities, petting zoo, concessions and fireworks at dusk. 4 p.m.-midnight, Racetrack Park, 900 Stoughton Rd. 608-884-3341, www.visitedgertonwi.com



Continued on next page



JULY EVENTS continued from previous page

8-12-JEFFERSON

Jefferson County Fair: The 2026 theme is "Let the Good Times Grow." Midway rides, grandstand entertainment, exhibits, demonstrations, food and live music. Jefferson County Fair Park, 503 N. Jackson Ave. 920-674-7148, www.jcofair.com

17-19-EDGERTON

Edgerton Tobacco Heritage Days: Huge festival celebrating Edgerton's tobacco heritage, with activities throughout the city, primarily downtown and at Race-track Park. Events include citywide rummage sales, softball and baseball, downtown car and truck show,

Rascal Run, big wheel race, lip sync, kids' activities, parade, food and live music. 2026 headliners include Fastball on Friday and Sara Evans on Saturday. www.edgertontobaccodays.com

18-EDGERTON

Edgerton Clay Day and Art Festival: Hands-on pottery and art festival celebrating Edgerton's clay and pottery history. Try the wheel, hand-build with local clay, meet artists, shop vendors and enjoy music and food. Central Park, Swift Street Pavilion area, 310 N. Main St. 608-289-6084, www.artscouncilledgerton.com

18-RURAL EDGERTON/ALBION

Albion Stroll Thru Arts in the Park Craft and Gift

Fair: Annual craft and gift fair with crafts, gifts, pie social, food, music and free parking. Albion Park, 605 Albion Rd. 9 a.m.-3 p.m. Free admission. 608-289-1042, 608-884-6039

28-Aug. 2-JANESVILLE

Rock County 4-H Fair: The oldest 4-H fair in the United States. Midway rides, exhibits, demonstrations, grandstand entertainment, food and family fun. Rock County Fairgrounds, 1301 Craig Ave. 608-755-1470, www.rockcounty4hfair.com

Continued on next page





JULY EVENTS continued from previous page

28-29-RURAL MILTON

Lobster Boil at Buckhorn Supper Club: Advance reservations and payment required. Space is limited. Cash bar opens at 5 p.m., dinner served at 6:30 p.m. On Lake Koshkonong, 11802 N. Charley Bluff Rd. 608-868-2653, www.buckhornsupperclub.com



1-2-JANESVILLE

Tallman Arts Festival: Wisconsin's oldest art fair, held on the grounds of the Rock County Historical Society. Features artists, food, music, exhibits and family activities. Rock County Historical Society, 426 N. Jackson St. 608-756-4509, www.rchs.us

6-16-WEST ALLIS

Wisconsin State Fair: The state's largest annual event blends Wisconsin agricultural traditions with contemporary entertainment, midway rides, livestock, food, vendors, family activities and the famous cream puffs. Wisconsin State Fair Park, 640 S. 84th St. 414-266-7000, www.wistatefair.com

7-9-BRODHEAD

Covered Bridge Days: Free live concerts, downtown activities, Wildflower Art Festival, tractor show and thresheree, food stands, vendors, garden tractors, horse show, car show, parade and more. Downtown Brodhead and south Brodhead. 608-897-8411, www.brodheadchamber.com

15-STOUGHTON

Coffee Break Festival: Celebrate the birthplace of the coffee break with a Coffee Brew-Off, Cup O' Joe All Wheels Show, arts and crafts, food, contests and family activities. Rain or shine, 8 a.m. to 2 p.m. Mandt Park. 608-873-7912, www.visitstoughton.com

25-26-RURAL MILTON

Lobster Boil at Buckhorn Supper Club: Advance reservations and payment required. Space is limited.



Cash bar opens at 5 p.m., dinner served at 6:30 p.m. On Lake Koshkonong, 11802 N. Charley Bluff Rd. 608-868-2653, www.buckhornsupperclub.com



4-7-RURAL EDGERTON

70th Rock River Thresheree Show: Living history festival featuring antique steam engines, working equipment demonstrations, train rides, saw mill, blacksmith shop, woodcarvers, antique cars and trucks, flea market, tractor activities, Parade of Power and live music. 2026 features include 100 years of Caterpillar and Fuller & Johnson gas engines. Thresherman's Park, 531 E. Cox Rd. 608-868-2814, www.thresheree.com

11-12-EDGERTON

Chilimania: Wisconsin State Championship CA-SI-sanctioned chili cook-off, traditional chili cook-off, salsa contest, best Bloody Mary competition, public chili tasting, live music, food and fun. Downtown Edgerton. 608-757-3171, www.chilimania.com

11-13-JEFFERSON

Wisconsin Sheep & Wool Festival: Sheep shows, fiber arts, education, stock dog trials, demonstrations, competitions and more than 100 vendors. Jefferson County Fair Park, 503 N. Jackson Ave. www.wisconsin-sheepandwoolfestival.com

18-20-JEFFERSON

Gemuetlichkeit Days: Celebrate Jefferson's German heritage with music, German food, costumes, contests, fellowship and family fun. 2026 theme: "Stars, Stripes and Steins!" Parade is Sunday at noon in downtown Jefferson. Jefferson County Fair Park, 503 N. Jackson Ave. 920-674-4511, www.gdays.org

29-30-RURAL MILTON

Lobster Boil at Buckhorn Supper Club: Advance reservations and payment required. Space is limited. Cash bar opens at 5 p.m., dinner served at 6:30 p.m. On Lake Koshkonong, 11802 N. Charley Bluff Rd. 608-868-2653, www.buckhornsupperclub.com



27-28-RURAL MILTON

Lobster Boil at Buckhorn Supper Club: Advance reservations and payment required. Space is limited. Cash bar opens at 5 p.m., dinner served at 6:30 p.m. On Lake Koshkonong, 11802 N. Charley Bluff Rd. 608-868-2653, www.buckhornsupperclub.com

TBD-CAMBRIDGE AREA

Earth, Wood & Fire Artist Tour: Self-guided driving tour featuring pottery, wood, textiles, painting, rural scenery and regional artists. Check website for confirmed 2026 dates and studio details. 608-423-4507, www.earthwoodandfiretour.com

TBD-BELOIT

Halloween Parade and Party: Children show off costumes in a parade through downtown Beloit businesses for treats during the final farmers market of the season. Includes live music and activities. 608-365-0150, www.downtownbeloit.com

History comes alive at Albion Academy

By Mark Scarborough
Reporter Staff
Reprinted from 2013
Lakes Issue

Southern Wisconsin's earliest educational history and much more is on display on Sunday afternoons throughout the summer at the Albion Academy Museum, which fronts the "green" in this intimate Dane County town.

You're unlikely to meet your own great-great-grandfather there and you probably won't stumble into some strange timespace conundrum that will threaten the fabric of time as we know it. Even so, the museum provides one of the Edgerton area's best chances for time travel this side of H.G. Wells (or a visit to Edgerton's Sterling North Childhood Home Museum).

Many of the Albion community's first 1840s and 1850s settlers hailed from New England, explaining the name of the place (which reminded folks of the ancient moniker for old England). New England's stamp on life also influenced the notion of having a "village

green" – a large expanse of park land – in the middle of the town.

The first emigrants to the community that eventually became Albion were largely Seventh Day Baptists, a group that had a real zeal to educate. So it is no real surprise that the Albion Academy took shape here early on.

The academy – at various moments of the school's history known as more of a preparatory institution for scholars moving on to a larger college or a university, or a "normal" school that trained teachers for the 19th Century's enormous number of one-room grade schools, or an academy of higher learning that provided academy students with all the education they might receive after their own one-room school experience – flourished from 1854 to 1918.

The last building of the old academy, Kumlien Hall, was destroyed in a fire in 1965, but devotees of the old school never gave up their affection for Albion's premier institution of great learning. Even total destruction

by fire could not stop the flood of nostalgia and memory, so the last generation of historians that had firsthand memories of the old academy structure (including now-gone mainstays like Clifford Townsend Sr., Svea Adolphson and Sverre Roang) simply rebuilt the building that had been burned and began again to stock the "new" academy with ancient artifacts of local life as early as 1967.

Visitors paying the nominal suggested donation for admission to the museum (which is open Sundays from June through August, 1-4 p.m., with the exception of Edgerton's Tobacco Days weekend) will discover a wealth of history.

Various rooms at the museum give visitors a chance to glimpse a typical academy classroom of the 1860s era, as well as to experience student dormitory rooms of roughly the same period. Other rooms include a library and a parlor similar to those that would have been enjoyed by the academy's teaching staff; a room dedicated to the Norwegian-Amer-



ican culture that, alongside English traditions, helped shape Albion's heritage; and one-time Edgerton attorney Stanley Slagg's magnificent collection of Albion and Edgerton-area historical photographs.

Rock County's former Sheepskin School, once located in the town of Fulton on Highway 59 west of Edgerton, also offers visitors a chance to step back in time and see what it would have been like to learn in a one-room school.

As the museum moves toward establishing an Albion history room, a relatively new exhibit at the museum is an exhibit on the history of the Albion Tigers baseball team created by long-

time museum volunteer and board member Nancy Durgin. Durgin has traced the legacy of the Tigers from the early 1930s to the present.

The town of Albion opened the ballpark where the Tigers play on June 14, 1934, with the Edgerton Reporter noting that some 2,000 people were in attendance for that day's game. On the opening day of the new ball diamond, Albion's Tigers defeated Madison's Kroegers by a score of seven to four.

Among the team's then best-known players were cousins Hank and Rube Hartzell. The Hartzells were also star players on the "kittenball" team organized by the Edgerton dentist, Fred

"Doc" Meyers.

The current incarnation of the Tigers is part of the Home Talent League.

Baseball caps and catcher's masks, uniforms and jackets, and trophies and photos have been on display.

Another emphasis for research and this season, with a display at the Albion town hall prepared by Durgin, has to do with school houses once used in the town of Albion. Durgin has prepared a map of the seven former schools – Albion Graded, Gravel Store, Emery, Maple Grove, Albion Prairie, Red Brick, and Lake Drive. Photos of some of these buildings are also included in this display.

Beautiful, historic Beckman Mill Park

Adapted from past submission from Sheri Disrud

When profiling Beckman Mill County Park – a jewel of an historical attraction that is a favorite of area photographers – it is best to start at the very beginning, some 150 years ago.

The year was 1868. In Newark Township west of Beloit, Wis., a man by the name of William How built a new grist mill along Raccoon Creek. It was later mortgaged to Louis Hyde and, in turn, sold to William T. Kelley.

In 1882 Catherine Beckmann bought the property, and her husband August became the miller. August operated the mill until his death in 1908, at which point his sons, Henry and Charles (Charlie), took over. The Beckman Mill was known for its buckwheat flour.

Henry died in 1939; his brother Charlie ceased milling operations in 1954. Charlie died in 1966, but his wife Bessie continued to live in the house until 1978.

Rock County purchased the Beckmann property for use as a park, with the intention of restoring the mill. However, no work was done so the buildings deteriorated.

In 1990, a group of concerned residents along with the Beckmann family formed the Friends of Beckman Mill and began extensive renovations. After the mill was restored, it was necessary to get the breached dam rebuilt in order to operate the original mill stones as they had in 1868. The dam was built, along with a fish ladder.

The house was renovated to serve as a museum and a barn was built. A building that replicated the creamery that once stood on the property was built to house a gift shop, meeting room, blacksmith shop and restrooms. The county constructed a shelter which is available for rent by calling 608-757-5450. This project has been done in cooperation with Rock County Parks. The group continues its preservation efforts which have been accomplished by volunteers and their expertise in building, construction and engineering. The site is listed on the National Register of Historical Places.

Opening day this year for the historic mill, was May 2. Summer and fall special events set for the park include an Ice Cream Social and Artists in the Park on July 21 and "Heritage Sunday" on Sept. 13.

The Ice Cream Social runs from noon to 4 p.m. Ice cream, root beer floats and cake are served for donations. Artists will be available for questions while they are painting throughout the park. Some of their art work will be available for sale. Special artistic activities for the kids will add to the excitement for the day. As with all of the events, the mill, museum and gift shop will be open for tours.

Heritage Sunday runs from 11 a.m. to 4 p.m. This is Beckman Mill's largest event. It includes historic trade demonstrators such as basket weavers, wood carvers and broom makers. Soldiers representing several different wars that the United States

has been involved in will be there. Brats, hot dogs, and desserts will be available for purchase. It is a fulfilled day for the whole family.

Admission is by donation for all of the events, which are greatly appreciated. Your donation helps maintain the buildings and keep this historical site available to the public to learn about past history.

Mill tours are offered on Saturdays and Sundays, May through October, from 1-4 p.m., or group tours can be arranged by appointment. Grinding demonstrations are presented the first Saturday of every month and on special events days.

Beckman Mill County Park is located six miles west of Beloit at 11600 S. County Road H. For more information, call 608-751-1551, visit www.beckmanmill.org or email info@beckmanmill.org.

In 1990, the group was formed to renovate the mill that was in need of major renovations. Since that beginning, the volunteer group has renovated the mill to working condition. They also rebuilt the dam, built a DNR required fish ladder, renovated the family home into a museum, built a footbridge and barn, and built a replica of the creamery that once stood on the property to host the blacksmiths and gift shop. Mind you this was all done by volunteers, grants, monetary and material donations, and memberships. The park and buildings are owned by Rock County and FBM maintains the buildings and dam. We think that this is quite the accomplishment for a group of volunteers.



Friends of Beckman Mill offers guided tours of the mill and museum on every Saturday and Sunday from 1-4. Demonstrations of corn being ground on the mill in operation on the first Saturday of the month and at our special events along with blacksmiths demonstrations

Tour times are 1 to 4 pm. In addition to the weekend tours, there are a number of special events as described below
Group tours by appointment, please call 608-751-1551.
Donations appreciated! Thank you for your support.

Ice cream date July 19 Ice Cream Social and Artists in the Park 12:00 - 4:00.

Enjoy delicious ice cream, cake and beverages in the picnic shelter. Local artists will be at work in the park along with displays of their art. The mill, cooperage, visitor center & gift shop will be open as well. And, be sure to take a leisurely stroll through the nearby oak savanna to enjoy its native plants and wild flowers.

Heritage Sunday Sun., Sept. 13 11 am - 4 pm

Visit the past at Friends of Beckman Mill's Heritage Sunday. There'll be guided tours of the mill and the Cooperage/Beckman Home Museum as well as historic trade demonstrations of vintage crafts. Other attractions include antique cars, tractors, machinery, horse drawn wagon rides, live music, great food and more. To honor all our veterans there will be a military timeline display. Before departing, be sure to stop by the Visitor Center to see the creamery and blacksmith shop displays and to purchase neat gifts.



Beckman Mill County Park

11600 South County Road H, Beloit - 6 miles west of Beloit, South off of HWY 81
608 751-1551 • beckmanmill@gmail.com • www.beckmanmill.org

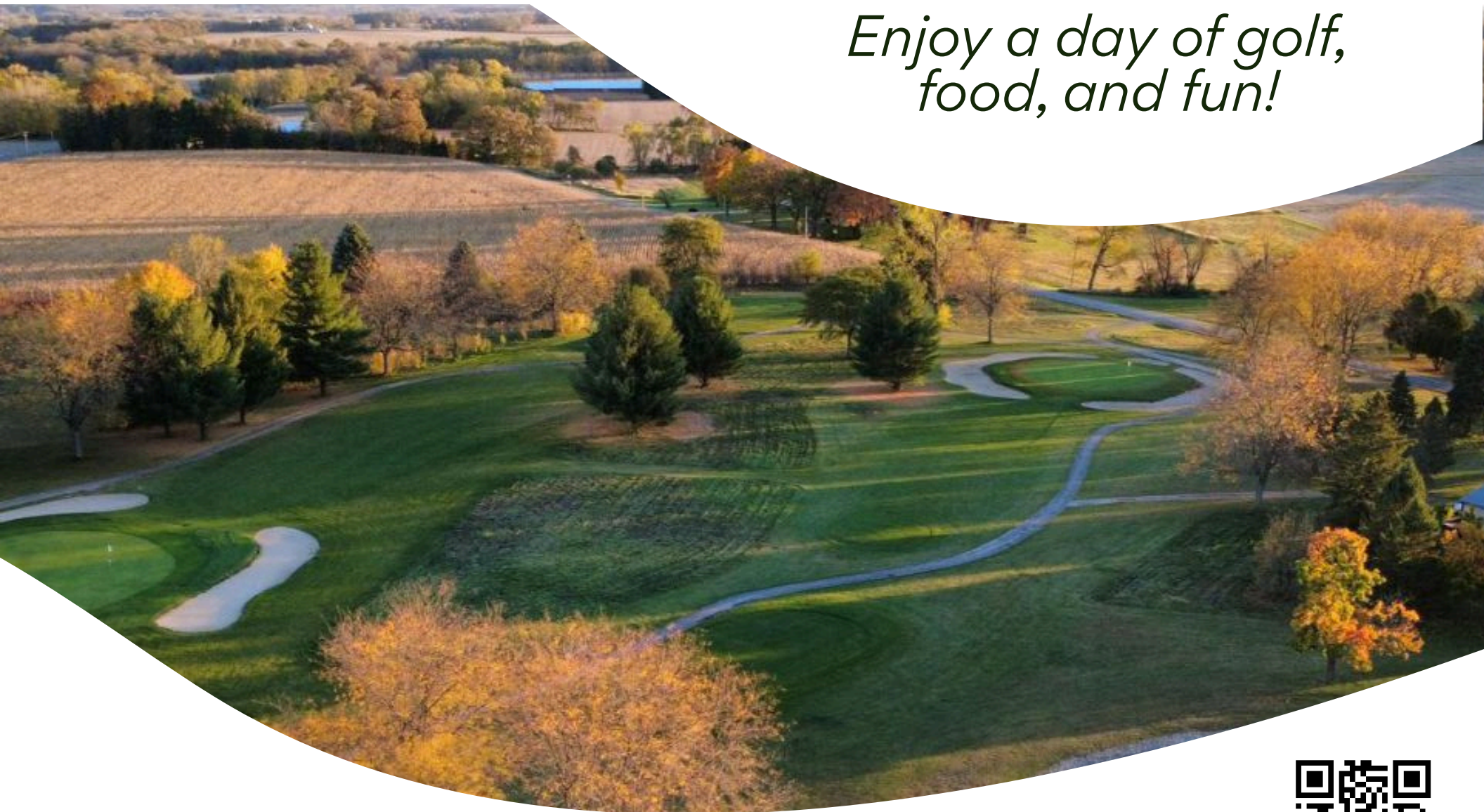


COACHMAN'S
GOLF RESORT

**GOLF.
EAT.
STAY.**

27 HOLES

*Enjoy a day of golf,
food, and fun!*



~ ENJOY ~

- 27 Hole Public Golf Course
- Driving Range
- Golf Package Stay + Play Plans
 - Includes Whirlpool & Fireplace Suites
- Resort Style Pro Shop
- Outdoor Swimming Pool
- Complete Banquet Facilities
 - Accommodates for up to 250 people
 - Full Service Catering
- Dine in our "Twenty8" Restaurant
 - Now Open Year Round!
- Specials on the 28th of each month
- Friday Night Fish Fry
- Saturday Night Prime Rib Buffet
- Sunday Brunch served 9:00 a.m.- 2:00 p.m.
- Daily Lunch & Dinner Specials
- Steaks, Chicken, Seafood, Pasta

**CALL TO MAKE YOUR
TEE TIME TODAY!**

Hwys 1-90 & US 51, Exit #156
Between Edgerton & Stoughton, WI
608-884-8484 or email
coachmansgolfresort@gmail.com

Stoughton Hot Spots and Happenings



Located on approximately three acres at the intersection of Dane County Highway B and Country Club Road, just north of Stoughton, the Stoughton Area Veterans Memorial Park honors local service members from the Civil War to the present day. Opened to the public in 2016 and officially dedicated in 2017, the park features impressive displays commemorating the sacrifices of Stoughton-area veterans. The memorial was created through a joint effort of Stoughton VFW Post 328 and American Legion Post 59.

Lake Kegonsa State Park

Just three miles north of Stoughton, Lake Kegonsa State Park offers a peaceful natural setting along the shores of one of Dane County's most popular lakes. The 340-acre park features camping, swimming, hiking trails, boating, fishing, nature study and picnic areas. Lake Kegonsa covers more than 3,200 acres and provides excellent opportunities for water recreation throughout the summer. The park is open daily from 6 a.m. to 11 p.m.

Stoughton Historical Museum

Housed in a former church built in 1858 on land donated by city founder Luke Stoughton, the Stoughton Historical Museum preserves the rich history of the community and surrounding area. The building is listed on the National Register of Historic Places. The Historical Society also maintains the historic Luke Stoughton home and the restored Stoughton Depot, offering visitors a glimpse into the city's railroad and pioneer heritage.

Happenings

Mid-May - Syttende Mai Festival

Stoughton proudly celebrates its Norwegian heritage with one of the largest Syttende Mai festivals in the United States. The multi-day event features parades, live music, dancing, arts and crafts, Norwegian foods, family activities and cultural demonstrations throughout downtown Stoughton. Visitors come from across the Midwest to experience this unique



celebration of Norway's Constitution Day.

Thursdays, Late May through Early September - Gazebo Musikk

This free outdoor concert series returns to Rotary Park each Thursday evening from 6 to 7:30 p.m. Attendees enjoy a variety of musical styles while relaxing in the heart of downtown Stoughton. Food and beverages are available from local nonprofit organizations. Bring a lawn chair or blanket and enjoy live music beneath the gazebo.

Saturdays, Late May through Mid-October - Stoughton Community Farmers Market

Downtown Stoughton's popular farmers market features fresh produce, baked goods, honey, meats, flowers, artisan crafts and locally made products. The market is held Saturday mornings on Forrest Street and draws vendors and visitors from throughout the region.

June 20 - Taste of Stoughton

One of Stoughton's premier summer events, Taste

of Stoughton showcases local restaurants, food vendors, beverages and live entertainment at Mandt Park. The festival offers visitors a chance to sample the community's culinary offerings while enjoying family-friendly activities.

July - Stoughton Fair July 1-5, 2026

The Stoughton Fair returns to Mandt Park with midway rides, livestock exhibits, 4-H and FFA projects, grandstand entertainment, tractor and truck pulls, a demolition derby and family activities. The annual fair remains one of the area's most popular summer traditions.

July 3-5 - Catfish River Music Festival

The annual Stoughton Opera House fundraiser fills Rotary Park with free live music, food vendors, artists and community organizations. The festival draws visitors from across southern Wisconsin and helps support one of the region's premier historic performance venues.

August 15 - Coffee Break Festival



Celebrate the community that claims to have originated the coffee break. This family-friendly festival features coffee tastings, arts and crafts, a car show, live entertainment, children's ac-

tivities, food vendors and a popular 5K run/walk. Information compiled from local tourism organizations, municipal websites, event organizers and other public sources.

We're Here For You

Stoughton Health accepts Dean Health Plan, Quartz, and over 160 other insurance plans!



Scan QR code for urgent care hours!



Stoughton Hospital Urgent Care
900 Ridge Street

Oregon Urgent Care Clinic
990 Janesville Street

McFarland Urgent Care Clinic
5614 US HWY 51

Cottage Grove Urgent Care Clinic
110 Limestone Pass, Suite 103



stoughtonhealth.com



Luke Stoughton was an early pioneer

By Stuart Hamilton
Reprint from the
2013 Lakes Edition

Land for sale! Acres of wooded land in southeast Wisconsin, surrounding part of the picturesque Yahara river. Offers excellent fishing and hunting year round. Price \$2.60 an acre.

A bargain at the price? Certainly by today's standards. But in 1847 Luke Stoughton paid top money for the land on which to build the village bearing his name.

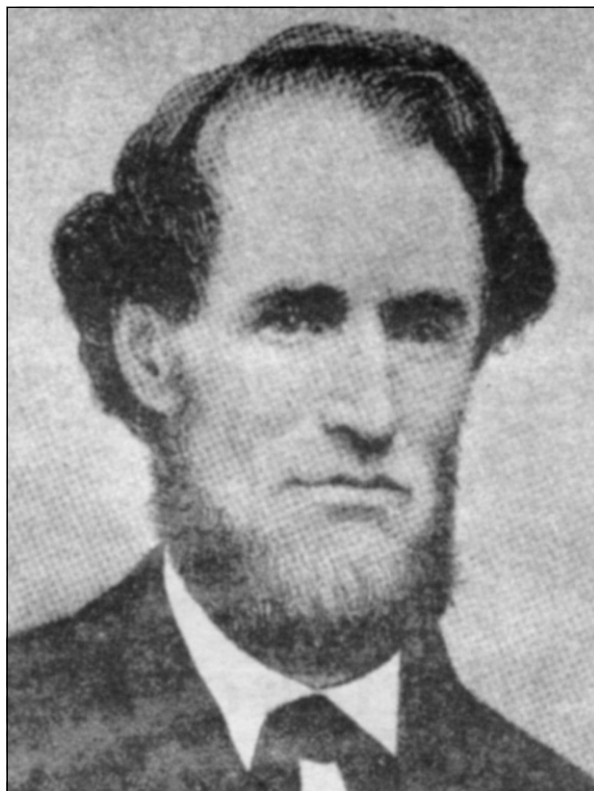
The going rate then was \$1.25 an acre, but Stoughton's founding father saw possibilities for this piece of land nestled around a bend in the Yahara River.

Luke Stoughton was a pioneer, and the son of a pioneer. He was a "Yankee" from Vermont who had little time for a formal education and whose character was shaped instead by the rigors of New England winters and the hardships of pioneer life.

Stoughton came to Wisconsin lured by the promise of rich fertile farmland, far removed from the rocky fields of northern Vermont.

In 1837, he left his wife of less than a year behind to travel west to Wisconsin and buy a farm seven miles north of Janesville. He set up his own business in Janesville and sent for his family the next year. He also bought and sold real estate and it was while doing this that he came across an excellent spot of land halfway between Janesville and Madison.

The land had a river, which could supply water power for a saw mill or grist mill, and the surrounding area was rapidly being settled by farmers who would provide customers. Undeterred by the prospect of competition from nearby



Luke Stoughton (1799-1874) founded the "Norwegian Capital of America" in 1847.

Dunkirk, Stoughton bought the 800 acres of land in 1847 for \$2,100 and immediately set about building a dam and saw-mill with which to mill lumber for building.

Stoughton drew plans for a village centered on the river and based on a grid system seven blocks long by six blocks wide. His first house was a small, two-story wooden place built on the north side of East Main Street in about the middle of the 100 block. This house still exists but has been moved twice to its present location by the power company on Division Street.

Later, Stoughton built a larger

brick house more befitting his stature in the community. This home overlooks the Yahara on Page Street named after his wife Eliza Page.

In the early years there was no bridge over the river and wagons had to ford their way across. Stepping stones enabled pedestrians to cross in safety.

Although the village of Stoughton grew well with the addition of a saw mill, grist mill, merchants, carpenters, doctor, preacher and blacksmith, it appeared that nearby Dunkirk would be the one to really prosper. The Milwaukee and Mississippi Railroad planned to go through Dunkirk and miss

Stoughton. Dunkirk was so sure of getting the railroad, it refused to donate land for the track and insisted the railroad pay for the land.

Stoughton saw his chance. He convinced the railroad officials to change course and run their track through Stoughton where a sizeable piece of land was theirs for the asking. Freight and passenger service between Stoughton and Milwaukee began December 15, 1853 and extended to include Madison the following year. The cost of travel in those days was not fixed by law or based on distance. In 1858 a ticket to Madison, 16 miles, cost 50 cents; to Edgerton, 9 miles, cost 35 cents; to Janesville, 25 miles, cost \$1.00; and to Milwaukee, 85 miles, cost \$2.00. The railroad's wood-burning steam engines provided local farmers with a good cash market for their oak cord wood. They hauled it in great quantities to the stockpile at the depot where it was cut into short lengths on a circular saw powered by a single horse plodding patiently in a circle at the end of a long sweep.

The coming of the railroad assured Stoughton's dream of a thriving village. Stoughton was on the map. Yet the Village of Stoughton did not legally assume that title for a long time.

Until 1846, the area was simply part of Dane County, of the Territory of Wisconsin. Early in that year the territorial legislature established the Township of Dunkirk which included all the land that later became the Village of Stoughton. Not until after the Civil War, in 1868, was Stoughton legally recognized as a village separate from Dunkirk.

Luke Stoughton died in 1874 knowing his name would be perpetuated by the village he had founded

Coachman's Golf Resort under new ownership



By Mikey Rottier
Special to the Reporter

Coachman's Golf Resort is stepping into a new chapter following its recent acquisition by Chris Overton, who now oversees the property's full operation from the golf course and hotel to the bar, restaurant, and wedding venue.

One of the most noticeable improvements for returning guests will be on the course itself, with upgraded greens. But, the changes extend beyond golf. The resort is evolving into a more dynamic, multi-use destination designed to bring people together for a variety of experiences.

"We want to make sure everybody has a reason to come out here," said Tiffany Kotjarvi, events director. "Not just for golf, but for different activities that make the space more inclusive to the community."

Plans are underway to expand entertainment, including the addition of a stage for live events. The goal is to transform Coachman's into a hub where guests can just as easily attend an event, enjoy a meal, or celebrate a wedding as they can play a round of golf.

Inside, the resort continues to

evolve as well. The reimagined lounge space, formerly a back room, now serves as a rentable private area, complete with the return of the venue's sunken bar.

Behind the scenes, the operation is driven by a highly collaborative approach. Weekly management meetings bring together leaders from each part of the business to align ideas and create cross-functional experiences. Whether it's coordinating themed specials around major events like the NBA Finals or developing new ways to connect the restaurant, bar, and golf course, the team emphasizes constant communication and creativity.

"It's really about bringing everyone together," Kotjarvi said. "We're always asking how we can take an idea from one area and bring it into another to create a better overall experience."

While Coachman's has long been appreciated for its scenic setting and strong community ties, this new phase is about building on that foundation. With thoughtful upgrades, expanded offerings, and a clear vision for the future, the resort is positioning itself as more than just a golf destination.

CONANT AUTOMOTIVE INC.

SERVICE & REPAIR 608-873-8800



Conant Automotive Offers Auto Repair Services You Can Count On!

Since 2006, Conant Automotive has provided motorists in the Stoughton, WI 53589 area with comprehensive auto repair services.

Our goal is to offer the best services available at affordable prices to get you back on the road in no time.

For a high-performing vehicle, trust Conant Automotive with your car, truck, or van.

To learn more about the services we offer,

Please contact us by phone at 608-873-8800 or send us an email.

We also invite you to learn more about our dedication to you, our valued customer.

Discount for Veterans, ActiveMilitary & Seniors

Conant Automotive is a full-service preventive maintenance and auto repair center. **Conant Automotive** has been performing high quality, guaranteed auto, SUV, and truck repairs in the Stoughton area since 2006. We service and repair all imported and domestic cars and trucks. Bring in your imported and domestic auto, SUV, or pickup today with complete confidence that your auto will be serviced or repaired correctly the first time. Don't be worried about the factory warranty on your new car! We have the staff, skills, training, and equipment necessary to perform all required maintenance on your new car or truck while maintaining your warranty. We are the preferred alternative to the dealership for all scheduled maintenance of your personal car or truck, as well as your fleet vehicle.

Schedule an appointment today for all of your automotive needs!

- Car Care Services • Brakes • General Services • Undercar Services
- Heating and Cooling Services • Electrical Services • Transmission Services
- Electronic Services • Internal Engine Services • Heavy-Duty Services • Miscellaneous Services

1324 Hwy. 51-138 Stoughton, WI 53589

608-873-8800

Monday - Friday 7:00AM - 6:00PM
Saturday 7:30AM - 12:00PM • Sunday Closed

Website: Conantauto.com
E-mail: conantauto@tds.net

TIRES

We offer most major brands of tires.

These are a few of our preferred brands.

Authorized Goodyear dealer

GOODYEAR

KELLY TIRES
A GOOD DEAL ON A GREAT TIRE

DUNLOP TIRES





Cooking Your Lake Catch



NEIL HESSELMAN'S SECRET FISH FRY RECIPE

Lay the fillets out and lightly salt and pepper them. (You can use Mrs. Dash's table blend also.)

Dip in a beaten egg.

Roll in a mixture of 1/2 white soda crackers crushed and 1/2 regular potato chips crushed.

Make sure you roll several times until well coated.

Deep fry in 1" vegetable or peanut oil. For larger batches use fish fryer.



WALLEYE SUPREME

2 pounds walleye filleted
1/2 cup melted fat or oil
1/2 cup sesame seeds
1/3 cup cognac

1/3 cup lemon juice
3 T. soy sauce
1 tsp. salt
1 large clove garlic, crushed

Cut fish into serving-size portions. Combine remaining ingredients, pour over fish and let stand for 30 minutes, turning once. Remove fish, reserving sauce for basting. Place fish in well-greased, hinged wire grills. Cook about 4 inches from moderately hot coals for 8 minutes. Baste with sauce. Turn and cook for 7- 10 minutes longer or until fish flakes easily when tested with a fork.

BAKED WALLEYE WITH DRESSING

(Courtesy of Wisconsin Sportsman Magazine)

4 top ends of celery
2 juicy apples
2 slices of bread cut in small squares
1/2 cup raisins, washed in very hot water

1/4 cup sugar
1 medium onion
1 T. leaf thyme
3 T. butter

Slice celery and apples. Mix in bread, thyme, raisins, sugar, onion and butter. Fill cavity of fish with dressing. Put toothpicks on sides of fish and lace with string to hold dressing. Spread butter over top of stuffed fish and bake in 375 oven until golden brown, approximately 45-50 minutes.

PICKLED BLUEGILL

12-15 bluegills
2 cups vinegar
1 cup water
1 medium onion sliced

1/4 tsp. whole allspice
2-3 bay leaves
3 tsp. sugar

Salt fish as for frying and keep refrigerated 12 hours. Combine remaining ingredients and bring to a boil. Add fish and boil 7-8 minutes. Pack fish in fruit jar, pour liquid to top of jar and seal--or serve as soon as chilled.

BARBECUED FISH

(Chris Lagerman, formerly of Edgerton, hooked third place in a Wisconsin State Journal cooking contest for this recipe.)

2-3 pounds fresh fish steaks, or fillets
1/2 cup salad oil
1/4 cup tarragon red wine vinegar
1/2 tsp. ginger

1 T. sugar
2T. sherry
3T. soy sauce
1/4 tsp. garlic powder

Arrange fish in glass baking pan. Combine oil, vinegar, ginger, sugar, sherry, soy sauce and garlic powder. Pour over fish, and marinate for 1 hour. Place fish on well-oiled grill or in a well-oiled hinged grill over glowing coals. Barbecue for 10-15 minutes, brushing frequently with marinade. Turn carefully with spatula or turn the hinged grill. Continue barbecuing for 10-15 minutes or until fish is done. Lift carefully onto hot platter and brush well with remaining marinade.





CHEESERS
LoKAL MARKET
WINE • CHEESE • MEATS

Cheesers.com
183 E. Main Street, Stoughton
608-873-1777

Welcome To Stoughton And Lake Kegonsa



Famous Yetis Pizza (A Stoughton Original)
Lunch Pizza By The Slice
Hot Sandwiches And Fresh Salads

Check Out Our New Addition
Basecamp Arcade!



2300 US Highway 51
(Inside the SWAC building)
Stoughton
608-877-1544

Visit our **new** online store

for unique Lake items including merchandise and handy tools and useful items



www.lakesedition.com/store

Theater couple's eye for beauty shines at Ten Chimneys

By Michelle L. Honeyager
Special to the Lakes Edition

To visit Ten Chimneys is to visit an elaborate play stage in the form of a sprawling estate. Ten Chimneys, located in Genesee Depot, Wis., was the summer and retirement home of the 20th century theater stars Alfred Lunt and Lynn Fontanne. They brought to their home an eye for beauty, true art and detail characteristic of their acting careers. Guests of the home are treated to a unique experience encompassing classic theater memorabilia, authentic Scandinavian art, classic movie and theater history, stunning paintings and the fascinating history of the Lunts themselves.

The Lustrous Lunts A monument at the couple's grave reads, "Alfred Lunt and Lynn Fontanne were universally regarded as the greatest acting team in the history of the English speaking theatre. They were married for 55 years and were inseparable both on and off the stage." Indeed, the Lunts revolutionized acting. They showed an indomitable dedication to their craft, going on to perfect natural stage movements (like an actor turning their back to the audience) and the overlapping dialogue that we



take for granted in movies today. Critics called them "the fabulous Lunts," "the incomparable Lunts," "the lustrous Lunts," "the magical Lunts," "the great Lunts" and "the infallible Lunts."

The biographer Maurice Zolotow wrote "Lynn and Alfred projected an animal vitality, a spirit of gaiety and intense pleasure in being alive and in being in love... Together,



In these vintage photographs, legendary Broadway actors Alfred Lunt and Lynn Fontanne pose in various rooms in their home, nicknamed "Ten Chimneys" for the number of chimneys present on the grounds. (Warren O'Brien photos from the O'Brien Family Collection at the State Historical Society of Wisconsin)

they were an irresistible expression of the life force—of the joy of living." As part of their deal with The Theater Guild (an avantgarde acting company) they only acted together and took summers off to enjoy their Wisconsin home. Alfred came from a wealthy lumber family, but his father died when he was 2 years old. In his youth, Alfred lived in Genesee Depot with his mother and stepfather. In 1913, when Alfred came into inheritance from his father, he bought 3 acres in Genesee Depot and built a small house for

his mother and sisters. The home was slowly added to over the years as Lynn and Alfred stayed there in the summer. Gradually it became the sprawling estate guests can visit today. The informational video comments, "The Lunts designed Ten Chimneys the same way they crafted each performance—one delightful detail layered upon another, creating a home that's as personal as a diary." For instance, wall murals were painted by Claggett Wilson, who did the set for The Taming of the Shrew. Lunt had a

keen eye for painting and did a number of the whimsical and often humorous murals himself. The home was a collaboration area for artistic work where all the major names in acting, literature and art of the day craved to gather. The Lunts hosted the likes of Carol Channing, Laurence Olivier, Vivien Leigh (who played Scarlet O'Hara) and Helen Hayes, all big stars in their day. In 1960, the Lunts retired there, save for a couple of TV specials and

Continued on page 36

Springers
of Lake Kegonsa

Live Entertainment
Memorial Day to
Labor Day

Great Food & Fun
on Beautiful Lake Kegonsa in Stoughton

Whether you come by car or boat, you'll enjoy the great food, bar and beautiful views of Lake Kegonsa at Springers. Conveniently located close to Interstate 90 and County Hwy. N on the northeast shore of Lake Kegonsa in Stoughton, Wisconsin, Springers features an exciting dining menu with many of your traditional favorites including a great Wednesday & Friday Fish Fry and some of the best prime rib and shrimp you'll find anywhere. Our casual bar menu features excellent burgers, sandwiches and appetizers as well as tasty homemade pizza.

For some of the best lake views, food and fun in Dane County, be sure to stop in soon at Springers!
Call or check our website for hours.

3097 Sunnyside St, Stoughton, WI
608-205-9300
www.springersonthelake.com

Come by boat, car or UTV!

Ten Chimneys

Continued from page 35

travel. When the last family member to the Lunts died, Joseph Garton, a restaurant owner in Madison, purchased it and established the foundation. The land was established as a National Historic Landmark in 2003.

The Enchanting Tour Tours of the estate are offered mid April through the end of November. Ten Chimneys has a number of tour packages, which you can explore in greater detail online at www.ten-chimneys.org. The full tour starts with a helpful informational video detailing the history of the site and who the Lunts were. Then it's quickly off to the main house.

When you walk in, you are greeted by an entryway filled with serving men and woman painted on the walls in classic theater attire, complete with powdered wigs. A man holds out drinks and a woman holds a pineapple (a symbol for hospitality). Others hold out food trays, and more painted food trays sit on top of the radiator. Already the house is full of charm and whimsy.

The focal point of the entryway is the Swedish ceramic style stove, or Kakelugn. Over that is a proscenium arch, a classic staple on the stage. Wall sconces with half shade lights give off a soft theater-style glow. The Lunts had a true eye for beauty. They picked up whatever

spoke to them, no matter if it was a cheap item or not. Yet Alfred was very frugal. He reused banisters from old remodels and used gold tape to accent doors. From there you move into the tearoom. Two exotic statues stand here; stage props that Alfred took into his home. The home boasts banners from classic plays, a tea set that was used on stage, to name a few items. Lynn herself sewed upholstery covers and curtains, lush creations with classic floral patterns that decorate the home. From the downstairs entryway and tearoom, you're led up a winding staircase. The banister boasts 13 coats of paint and 3 wax jobs so that the handrail feels like the smoothest ivory, just like Alfred had it. That's how sensual and detailed this home is.

You arrive into a sort of hallway with six doors that served as the hub of the house. It's said to be inspired by French comedy of manner plays, where multiple doors would see multiple characters running in and out. This part of the home looks very Victorian, with a focal point being a Victorian wood burner. It's not hooked up, and true to the Lunts' profession, it sits merely as a stage prop. You're led into a large drawing room, where the walls are painted with classic Bible scenes, and Cherubs line the ceiling. A piano has a lovely painting under the hood of Orpheus taming the wild.



You then go up through the cozy library and into a separate room for sitting, all the while hearing heartwarming tales about the Lunts and their visitors. Then you go into a small hall lined with tinsels, which were old "baseball cards" for famous actors illustrated with tinsel accents. Alfred had one of the largest collections in North America. They all line the walls, glinting grandly in the low light.

You then move into the bedrooms, where the Lunts roomed the big names of their day. The guest room has the actual backdrop from *The Taming of the Shrew* attached to a large canvas. True to the Victorian feel, lavish floral patterns make up the curtains and wallpaper. You get to see a theater-style makeup table Lynn had overlooking the driveway so she could watch and make lavish entrances

shortly after her husband greeted everyone. The makeup table is covered in hand-blown glass flowers Lynn's sister made, which the guide shows you examples of up close. Then you move down through the large, white kitchen and make your way to the back of the property. Moving to the back of the property is like stepping out of Victorian England and into Old World Wisconsin. In the back are chicken coops, horse stables and a small dairy farm that housed two cows (Alfred made his own cheese).

Then you go into the studio cabin, where everything is rustic and very Swedish. This is where fans of Swedish folk art will rejoice. The cabin boasts a genuine antique Scandinavian armoire, just to name one element. Reused banisters make up a balcony where the Lunts were able to rehearse plays. Round

the way is their pool with an ornate Swedish-style changing house.

Then you finish the tour in the red cabin, which also looks very Scandinavian. The guide commented, "People come here to study this art, because you'd have to go to Sweden to see something like this."

Once you are finished touring the grounds, the information center also boasts a classic theater setup where you can listen to some informational recordings and tour an actual stage set, complete with costumes to try on and old recordings of Lynn and Alfred's interview with Dick Cavett. Panels show you anecdotes, photos and quotes from their acting careers.

The tour itself is creatively given. Guides speak in the diction that Lynn and Alfred would have used to accommodate guests. For

instance, you are greeted into the home with, "Welcome, darlings, welcome!"

All through the tour you are treated as a genuine guest of the home as guides ask if you would like to come to the bedrooms to lie down for a nap before dinner. Staff commented that research on the dialogue was conducted through oral histories, old letters and biographies.

This tour is truly great for anyone. If you like history, art, Victorian or Scandinavian styles, wildly inventive architecture, theater or movies, then this place is for you. The home is full of many surprises that are deliberately not mentioned in this article. You really have to step in and see the property to get the full experience of just how magnanimous the couple was. The Lunts' warm and creative personalities still shine out of every detail.

Norwegian Heritage Center



LIVSREISE™

LIFE'S JOURNEY



Photo by: TKWA

"Where immigrant stories come alive"

Livsreise offers a unique experience focusing on immigration from Norway to America from the period of about 1825 to 1910. One can learn about Norwegian culture through various electronic and interactive displays. Also featured is a 68 seat handicapped accessible, hearing loop enabled auditorium where one can select from Livsreise's on-demand video collection. There is also a genealogy lab/library and a temporary exhibit area currently featuring a traveling display from Vesterheim Museum.



• Tues-Sat 9:30-noon & 12:30-5pm • livsreise.org • 608-873-7567 •
 • Free Admission and Free Parking across the street •
 • 277 W. Main St. Stoughton, WI 53589 •

See upcoming events on our website or Facebook page



Cambridge Hot Spots and Happenings

HOT SPOTS

CAMBRIDGE HISTORIC SCHOOL MUSEUM

Built in 1906, the Cambridge Historic School (213 South St.) now serves as a museum preserving the community's rich heritage. The building once housed grades 1-8 as well as a four-year high school. When a new middle school opened in the early 1990s, local residents organized to save the historic structure. In 1997, the Cambridge Historic School Foundation opened the museum, and later that year the building was listed on the Wisconsin Register of Historic Places.

Today, visitors can explore seven rooms of exhibits featuring local history, agriculture, education, world cultures, and artifacts from Cambridge and the surrounding area. The museum is generally open from mid-May through mid-October on Wednesdays and Saturdays from 12:30-3 p.m., and by appointment. Admission is free. 608-423-2630

www.cambridgehistoricmuseum.org

CAMROCK PARK

Covering 422 acres along Koshkonong Creek between Cambridge and Rockdale, CamRock Park is one of southern Wisconsin's premier outdoor recreation destinations. The park features three separate use areas with shelters, playgrounds, hiking trails, cross-country ski trails, and an extensive mountain biking trail system that attracts riders from throughout the Midwest.

Shelter 1 is located at 68 County Highway B, Shelter 2 at 136 County Highway B, and Shelter 3 at 2334 Highland Road. 608-423-4438

www.danecountyparks.com

LAKE RIPLEY

Covering approximately 420 acres, Lake Ripley offers excellent fishing for panfish, largemouth bass, northern pike and walleye. Located just east of downtown Cambridge, the lake is a favorite destination for boating, swimming and outdoor recreation.

Lake Ripley Park features a public beach, playground, concessions, tennis courts, basketball courts, volleyball courts, disc golf, picnic areas and lake access. Whether you're looking for a relaxing afternoon on the beach or an active day on the water, Lake Ripley is one of the area's top attractions.

DOWNTOWN CAMBRIDGE

The heart of Cambridge is its charming and walkable downtown district. Visitors will find unique shops, boutiques, galleries, coffee houses, restaurants and historic architecture lining Main Street. Throughout the year, downtown serves as the backdrop for festivals, concerts, art events and community celebrations that showcase the village's welcoming small-town character.



ART HUB

Located at 145 W. Main St., Art Hub has become a focal point of Cambridge's thriving arts community. The center hosts exhibits, classes, workshops and special events throughout the year while supporting local and regional artists.

HAPPENINGS

TUESDAYS - CAMBRIDGE OPEN AIR MARKET

Held in Veterans Park, 100 E. Main St., from May through October, the Cambridge Open Air Market features fresh produce, baked goods, flowers, handmade crafts, artwork and locally produced products. The market brings together residents and visitors each week in the heart of downtown.

2-6 p.m. 608-423-3780

SELECT FRIDAYS - SUMMER CONCERT SERIES

Presented by the Cambridge Arts Council, these free outdoor concerts bring live music to Veterans Park throughout the summer. Visitors are encouraged to bring lawn chairs and enjoy an evening of entertainment in downtown Cambridge. The popular series features a variety of musical styles and attracts audiences from across the region.

MID-JUNE - MIDWEST FIRE FEST

June 13 and June 14, 2026

One of Cambridge's signature events, Midwest Fire Fest celebrates art created with fire, heat and smoke. The festival features blacksmithing, hot glass demonstrations, ceramics, metal sculpture, live music, food vendors, fire performers and hands-on activities. Thousands of visitors attend this unique event each year, making it one of the most distinctive arts festivals in Wisconsin.

LATE JULY-CAMBRIDGE LAKE RIPLEY RIDE

July 25, 2026

Cyclists of all abilities enjoy scenic routes through the rolling countryside surrounding Cambridge, Rockdale, Deerfield and Lake Mills. Multiple route options, rest stops, support vehicles, live music and a post-ride meal make this one of southern Wisconsin's most popular summer cycling events.

EARLY AUGUST - ART ON MAIN

Aug 7 and 8, 2026

Downtown Cambridge transforms into an outdoor art gallery as local and regional artists display and sell their work. Sponsored in conjunction with Art Hub and downtown businesses, the event features demonstrations, exhibits and opportunities to meet the artists who help make Cambridge a growing arts destination.

EARLY AUGUST - MAXWELL STREET DAYS

Bargain hunters flock to Cambridge for sidewalk sales, special promotions, a community-wide garage sale and the Friends of the Library Book Sale. Downtown businesses offer some of their best deals of the year while visitors enjoy a festive summer atmosphere.

EARLY AUGUST - UTICA FESTIVAL

Held in nearby Utica between Cambridge and Stoughton, this longtime community tradition features tractor pulls, horse pulls, live music, bingo, food, concessions, family activities and sporting events. The festival draws visitors from throughout southern Wisconsin.

MID-AUGUST - TRY CAMBRIDGE TRI

This popular sprint-distance triathlon begins and ends at Lake Ripley Park. Participants enjoy a scenic swim, bike ride and run through the beautiful countryside and historic downtown area. Spectators can cheer on, athletes while enjoying the lakeside setting.

YEAR-ROUND EVENTS

Cambridge hosts dozens of additional events throughout the year, including holiday celebrations, wine and spirits tastings, art exhibits, community festivals, outdoor recreation events and seasonal shopping promotions. No matter the season, visitors will find something happening in Cambridge.



Cambridge Clinic of Chiropractic

Walk-ins Welcome!

Timothy Wilbanks, DC

416 W. Main Street

Cambridge, WI 53523

(608) 423-4666

cambridgechiroclinic.com

Do you have GOLD or SILVER to sell? Work with a Reputable local buyer!!

By appointment only at our store in Cambridge, or in the privacy of your home.

I'll buy it all! Bars, rounds, coins, jewelry, serving sets, and damaged items, 999 or Sterling (925) silver. Also buying collections of good costume jewelry.



Call Gregory Klug Sr of Creekside Art, Antiques & Treasures Today from 9 AM to 6 PM Mon. - Sat. 920-723-4309 or email: gregoryklug@gmail.com

217 West Main St., Cambridge, WI 53523-0617



Crafted For Connections

Located in downtown Cambridge, The Cambridge Taphouse offers specialty brews, fine wines, small bites, and a relaxed environment.

201 West Water Street, Cambridge WI, 53523
WED · THURS · FRI. 3:00pm - 10:00pm
SAT Noon-10:00 pm · SUN Noon-6:00 pm
www.cambridgetaphouse.com



SCAN ME



EXPLORE A ROTATING COLLECTION OF QUALITY FURNITURE AND DÉCOR, HAND-SELECTED WITH CARE.

NEW PIECES ARRIVE WEEKLY TO BRING COMFORT AND STYLE INTO YOUR HOME.



CAMBRIDGE · MONONA · MIDDLETON



Aztalan: part of Wisconsin's heritage hidden in the open

By *Tristan McGough*
Special to the Reporter

The ancient Indian town of Aztalan is Wisconsin's premier archaeological site and a National Historic Landmark, and it is one of the wonders of Wisconsin hidden in the wide open spaces of our state's culture-bearing landscape.

Aztalan State Park was opened to the public in 1952 and is undoubtedly one of the most important archeological sites in Wisconsin. Designated a National Landmark in 1964 and listed in the National Register of Historic Places in 1966, the park has also become one of the most intriguing destinations available to visitors. In the 1946 words of American archeologist W.C. McKern, "In it appropriate that

Wisconsin should have at least one park that features as the primary attraction the prehistory of the state."

Located on the Crawfish River, successive Native American cultures lived here for thousands of years. Between 1050 and 1100, people from the great Mississippian civilization at Cahokia in southern Illinois established a fortified town, living with local Woodland people until the unexplained abandonment of the town about 1200 A.D. The name Aztalan derives from early settlers

who mistakenly thought the town was related to the Aztecs of Mexico. Evidence uncovered at the site, however, indicates that many of the Aztalan people came from the area of the large Native American city of Cahokia along the Mississippi River near modern-day East St. Louis, Illinois.

Archaeological excavations throughout the years determined that the town at one time covered over 35 acres. Indian people constructed three earthen platform mounds within the massive exterior log and clay fortification that supported important buildings: a temple where a sacred fire was burning, a mortuary structure and probably the residence of the chief or leader. The town was divided by interior log walls into a residential area, a plaza and a high area of land that seems reserved for elite members of Mississippian society. A mysterious enclosure extended from the town's southwestern end. The archaeological site of Aztalan is a wonderful place to visit. With its restored platform mounds, reconstructed palisade, and interpretive trails, it offers a unique glimpse into what a Late Woodland/Mississippian village might have looked like nearly 1,000 years ago.

There have been numerous archeological digs before this one at



Aztalan rendering, circa 1100 A.D. - Photo Submitted



Area around the spring - Photo Submitted

the 120-acre site operated by the Wisconsin Department of Natural Resources and supported by the Friends of Aztalan State Park, of which Bod Birmingham is the Ex-Officio Execu-

utive Director. The Friends are an active group dedicated to the promotion, upkeep, and enhancement of a unique ancient Native American ceremonial and residential Native American town

established in 1050 A.D. Friends of Aztalan State Park started in 2004.

Nevertheless, due to agricultural practices from the mid-19th to mid-20th centuries, many of the site's fea-

tures were severely damaged or destroyed. Most of what we see today are reconstructions from the 1940s and 1950s. However, there are a few features at Aztalan that managed to escape destruction from plowing. Two of the mounds survive and have been faithfully restored after some damage from years of modern agricultural use. Portions of the fortifications have also been constructed in the same places where archaeologists found evidence of log walls. These are the marker mounds on the ridge northwest of the main village area.

Another lesser-known feature is a spring on the bank of the Crawfish River that has survived relatively unscathed. It's located a short distance north of the southeast mound (known as the 'Gravel Knoll'). This spring is usually dry throughout the year, but during heavy rainfall, the ground surrounding the spring becomes quite damp.

Samuel Barrett, the renowned Aztalan archeologist of the early 20th century, mentioned this spring in his book "Ancient Aztalan." Barrett's description of the spring is quite detailed and provides valuable insights into its significance: "Here, in a considerable depression, we

Continued on page 39

Race in action at Jefferson Speedway this summer

By *Mikey Rottier*
Special to the Reporter

Jefferson Speedway in Cambridge, also known as Wisconsin's Action Track offers thrilling racing events all summer long.

Jefferson Speedway hosts their regular season racing program on Saturday nights, featuring races from a mix of their seven stock car divisions. Late Model, Hobby Stock, Sportsman, Legends, Bandoleros, Bandits and Internationals.

Qualifying laps begin at 4 p.m. and the first scheduled race takes off at 6 p.m.

In addition to the track's regular programming, several special events such as the Tournament of Destruction (TOD), a demolition derby style night of racing with different events such as spin to win, chain race, trailer race and donut bubble race.

TOD will be held on select Sundays throughout the summer including July 3, Aug. 1 and Sept. 6.

Also catch Jefferson Speedway's Track Attack nights, which gives fans the opportunity to take

their own modified car on the track and navigate their way through a time trial course. Track Attack is held on select Fridays including July 10, Aug. 14 and Oct. 2.

Depending on the event, admission ranges from \$15-20 for adults, \$12-14 for 62+ seniors,

students ages 12-15 get in for \$8-10 and kids under 8 get in for free.

Enjoy stock car racing at Jefferson Speedway every weekend this summer, located at W8135 US-18 in Cambridge.



Late Models race around Jefferson Speedway in a 75-lap event earlier this summer. (Photo Submitted)



2026 Jefferson Speedway SCHEDULE	
Date	Event
4/11	ISS ENDURO
4/19	MADISON SPORTS CAR CLUB
5/15	TRACK ATTACK
5/24	T.O.D #1
6/12	TRACK ATTACK
6/28	MADISON SPORTS CAR CLUB
7/4	T.O.D #2
7/10	TRACK ATTACK
8/1	T.O.D #3
8/14	TRACK ATTACK
8/30	MADISON SPORTS CAR CLUB
9/6	T.O.D #4
10/2	TRACK ATTACK
10/4	MADISON SPORTS CAR CLUB
10/17	HALLOWEEN TOD



BD BANK OF DEERFIELD

"Building relationships where we live since 1887."
15 SOUTH MAIN STREET • 867 SHAUL LANE
DEERFIELD, WISCONSIN 53531

608-764-5411

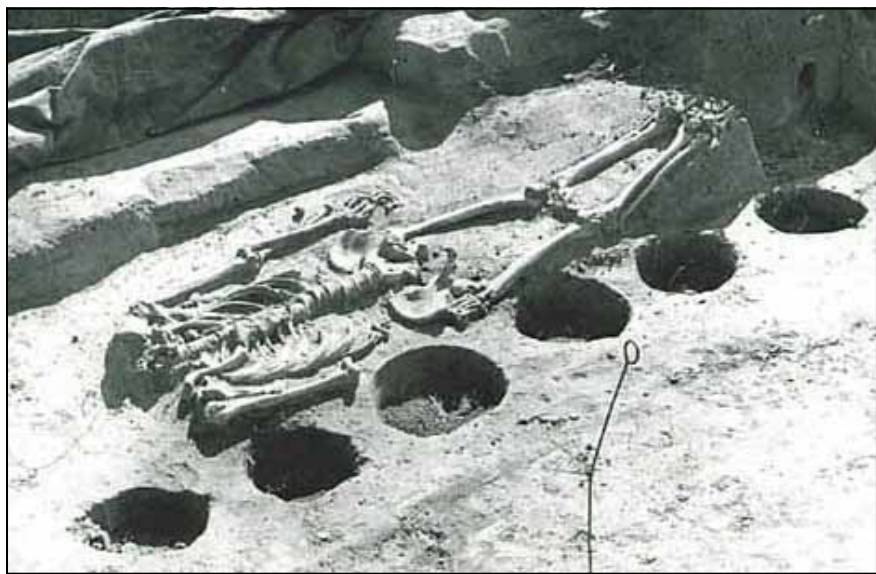
www.bankofdeerfield.bank

MEMBER
FDIC

NMLS# 523183

EQUAL
HOUSING
LENDER





Headless adult buried outside enclosure perimeter at Aztalan - Photo courtesy

found an area roughly 10 feet in width by 22 feet in length, which had been quite carefully paved with relatively flat stones.

Immediately outside this paved area there was a line of stones which may very well have been used as stepping-stones to reach this paved area. From early settlers we learned that there had formerly been a spring at this point and according to their statements this paving was evidently here when the site was originally discovered, so there is every probability that this paving and these stepping stones were placed here by the aboriginal inhabitants in order to facilitate access to this old spring. The spring is now completely dried up."

With the invasive species removal by the DNR in January 2025, the area



Replica of Aztalan pottery bowl - Photo courtesy

around the spring is now clearly visible and easy to find. As one walks the trail along the riverfront, northward from the south-east mound (aka Gravel Knoll), one will come across logs that the DNR staff has placed on the trail. The path here gets wet from time to time, so the logs were placed here to improve walking conditions and reduce erosion. When one reaches the logs, look eastward towards the river and notice the ravine: this is where

the spring is located.

Most of the Aztalan people lived in small pole and bark structures covered with clay for insulation. They grew corn, squash, gourds, sunflowers and other crops. Deer hunting provided most of the meat. The massive fortifications and other evidence suggest that the people of Aztalan were sometimes at war with other people. Among the many artifacts found at the site are beautiful clay pots, uniquely fashioned arrow points, a figure of a Mississippian deity, shell beads, copper and stone ear decorations worn by nobility and warriors, large stone hoes imported from southern Illinois and small stone disks or wheels from a spear-throwing game called "chunkey."

Continued on page 40

Welcome to **CLASSIC CAMBRIDGE!**

ICE CREAM AND BAKERY
PIES AND CAKES • PASTRIES
LUNCHES • SAVORY

SWEET SCOOPS
A LA MODE
ICE CREAM AND BAKE SHOP

275 West Main Street, Cambridge, WI 53523
608-423-2124

Rusty's Mexican Grill

Now Open in Cambridge!

Authentic Mexican flavors made fresh daily.

Mexican Specialties:

- House Salsas
- Fresh Guacamole & Chips
- Tamales • Quesadillas
- Enchiladas • Fajitas
- Quesabirria Tacos
- Burritos • Street Tacos

Open Daily for Lunch & Dinner

Jefferson Street, Cambridge

Mountain Man Guns

NEW • USED • TRADES • REPAIRS
APPRAISALS • GUNBROKER TRANSFERS

Owner Daniel A Yaeger
N3062 Asje Rd, Cambridge
dkyaeger6067@gmail.com • 608-423-3792

KEYSTONE GRILL

BBQ SANDWICHES ENTREES

DAILY SPECIALS

CHECK OUT THE BACK ROOM FOR LIVE MUSIC, EVERY SATURDAY NIGHT!

206 W Main St., Cambridge, WI

HOME IS WHERE THE HEARTH IS

THE FIREPLACE PROFESSIONALS, INC.

When Quality & Style Make the House a Home.
Since 1992

The Fireplace & Flooring Professionals sells, installs, consults, services and supports fireplaces, inserts, stoves, mantels, flooring, and fireplace stonework for contractors and the buying public.

2289 Hwy 73, Cambridge
608-423-4973
fireplacepros.com
Serving Southern Wisconsin

FIREPLACE XTRORDINAIR

Aztalan

Continued from page 39

What brought the Mississippian people to southern Wisconsin remains a mystery, though it is known that Aztalan had close kinship and commercial ties with its counterpart at Cahokia, also spelled. Cahokia was located in what is now southwestern Illinois, near present-day Collinsville and St. Louis, just east of the Mississippi River. The archaeological site is known as Cahokia Mounds State Historic Site. Also unknown are the causes of the disappearance of the Mississippian culture as a whole from the Midwestern United States. These questions are currently being investigated by Aztalan archaeologists who frequently give presentations at the park.

Curiously, Cahokia flourished from roughly 1050–1350 A.D. as the largest urban center of the Mississippian culture. 1050 A.D. is also the date Aztalan was founded. At its peak, Cahokia may have had 10,000–20,000 or more inhabitants, making it one of the largest cities in North America at the time. The site originally contained about 120 earthen mounds; around 70–80 survive today. Its largest structure, Monks Mound, is the largest prehistoric earthen construction in the Americas north of Mexico. Cahokia is a UNESCO World Heritage Site.

Aztalan's beginnings as a park date to 1922, when a group of concerned Jefferson citizens purchased the few conical mounds remaining from a group that once numbered more than 40. At that time what is now part of the state park was called Mounds Park. In 1927, the property was turned over to the Wisconsin Archeological Society and a formal dedication took place on Oct. 20, 1928. On April 2, 1947, the Wisconsin Leg-

islature directed the state Conservation Commission to acquire the land as a historical memorial park. The commission bought 120 acres and the Wisconsin Archeological Society and Lake Mills - Aztalan Historical Society donated their lands. The site opened to the public as a state park in 1952, designated a National Landmark in 1964 and listed in the National Register of Historic Places in 1966. The present Aztalan State Park covers 172 acres including a large tract of forest on the east side of the Crawfish River. The park preserves the remains of the Mississippian town, a line of ceremonial mounds that extend northward above the town, ancient agricultural fields and other fascinating cultural features.

In 2007 a trailer was placed in the park to serve as a temporary Visitor Center. During the summer months, volunteers staff the trailer, give tours, and are active in the Friends of Aztalan board. In 2010 the idea to build a permanent visitor and interpretive center was formed and the first fundraising was begun. In 2015 the design for the future visitor center was submitted. After the design was approved, the contract for interior design of the future Visitor Center was finalized in 2018. Fundraising campaigns were officially started and are continuing, and in 2023 an endowment fund was established with the Madison Community Foundation. Final building plans were approved by the DNR in December 2025 and on Feb. 4, 2026, the WDNR announced that the Aztalan Visitors Center Phase II was among 32 projects approved by the State Building Commission for Stewardship Friends Grant funding. \$430,000

has been collected for the total project cost of \$450,000 and the Friends group said that groundbreaking was anticipated in Fall 2026.

Friends of Aztalan State Park will be continuing the historical preservation movement with its Visitor Center, designed by Dimension IV Madison Design Group, in consultation with the Department of Natural Resources. The new 3,155 sq. ft. visitor and interpretive center will have room for a main lobby and permanent exhibit, staff office space, a gift shop, bathrooms, and a multi-purpose meeting space for local guests and visitors from around the world. The building is divided into three rectangular volumes with curved roofs and the building is intended to be visually subordinate to the site as a whole.

The Friends of Aztalan Park Visitor Center will offer an expanded educational experience for any visitor interested in the multifaceted history of Aztalan; however, until that time, a visitor trailer is currently onsite, providing information for anyone presently motivated to learn and tour this site of a bygone civilization that lays authenticated claim to being the first full-scale farming community in Wisconsin.



145 W MAIN STREET
CAMBRIDGE, WI

CREATE WITH US!

- PAINT YER OWN POTTERY
- WALK-IN PROJECTS
- SHOP 70+ LOCAL ARTISTS

GLAZE IT UP



WHERE ART HAPPENS
WISCONSINARTHUB.COM

Art_Hub_Lakes_2026_2026_171_1_1_1624148_TER_P_229_V1_sold

CODY BJARNE'S INC.

AUTO BODY & REPAIR MECHANICAL WORK

Dag Kaashagen
201 Jefferson St.
Cambridge, WI 53523
Phone: 608-423-9959
Cell: 608-444-0859
Fax: 608-423-9825
Email: dag@bjkci.net

DEERFIELD PISTOL & ARCHERY CENTER
608-764-2040

INDOOR RANGE

Public Pistol Range Instruction
Firearm Sales and Rentals Leagues
Accessories Carry Concealed Classes

Check us out at
www.deerfieldpistol.com

Jewels, Gems & Watches.....

What's Your Pleasure?

Max & Watchmaker Phillip Smith

Cambridge Jewelry
128 W. Main St., Cambridge, WI . 608-423-3812

Creekside ART, ANTIQUES & TREASURES
WISAUCTION.COM

217 West Main St., in the center of downtown Cambridge, WI

HOURS: Friday and Saturday 10am-4pm,
SUMMER HOURS: 6/4 to 9/5
We are also open Thursday

Come & see our inventory of
Art of various types, Estate Treasures,
Antiques & Vintage items, Costume Jewelry,
Designer clothing & Bags.

We offer Certified Appraisal Service,
Always Buying Complete & Partial Estates,
Auction & Estate Sale Service in person or online.

Albatross Alley & Lake Ripley Lanes
"THE BEST SPOT TO HANG IN THE LAKE RIPLEY AREA"

Indoor Golf, w/ Two Golf Simulator Rooms & Classic Bowling, w/Tons of Lanes

Indoor Golf & Bowling

Monday - 11 a.m. - Close	Friday - 11 a.m. - Close
Tuesday - 11 a.m. - Close	Saturday - 9 a.m. - Close
Wednesday - 11 a.m. - Close	Sunday - 11 a.m. - 6 p.m.
Thursday - 11 a.m. - Close	

W9534 US Hwy. 12
Cambridge, WI 53523 608-423-4523

Lake Ripley Family Restaurant

Arsim Ahmedi
Owner

OPEN:
Sunday-Thursday 6am-2pm
Friday 6am-8pm Saturday 6am-2pm

West 9644 Hwy. 12, Cambridge, WI 53523
(608) 423-4523

WGED CONSTRUCTION

Dag Kaashagen
201 Jefferson St.
Cambridge, WI 53523

Phone: 608-423-9959
Cell: 608-444-0859
Fax: 608-423-9825
Email: dag@bjket.net

Welcome We are here for you.

Marc's GARAGE
30 YEARS ANNIVERSARY
SERVING THE CAMBRIDGE COMMUNITY

Services

- Brakes
- Tires
- Alignment
- AC Repair
- Engine Maintenance
- General Services
- 4x4 Services
- Asian Vehicle Repair
- Buying New Tires
- Car & Truck Care
- Domestic Cars & Trucks
- Electric and Hybrid Vehicle
- Electrical Services
- Electronic Services
- Engine & Transmission
- Engine Repairs
- European & Import Vehicle Repair
- Expired Warranty Care
- Heating and Cooling Services
- Ignition Repair
- Inspections
- Miscellaneous Services
- Starters & Ignition Repair
- Transmission Services
- Undercar Services
- Wheels and Tires

206 Commerce St., Cambridge, WI 53523 • 608-423-7101 • www.marcsgarage.com

Fort Atkinson Hot Spots and Happenings

Nestled along the scenic Rock River, Fort Atkinson offers visitors a blend of history, culture, outdoor recreation and small-town charm. Whether you're exploring local museums, catching a Broadway-caliber performance at The Fireside, biking the Glacial River Trail or enjoying one of the community's many festivals and concerts, Fort Atkinson provides something for every age and interest.

The city's rich heritage is evident throughout its historic downtown, museums and landmarks, while its parks, trails and riverfront create endless opportunities for outdoor adventure. Throughout the summer, residents and visitors alike gather for farmers markets, live music, family events and community celebrations that showcase the welcoming spirit of Fort Atkinson.

HOT SPOTS

The Fireside Dinner Theatre, 1131 Janesville Ave., remains one of Wisconsin's premier entertainment destinations, presenting professional musical productions, concerts and dining experiences throughout the year. The theater attracts visitors from across the Midwest with Broadway-quality performances, exceptional cuisine and unique shopping opportunities. 920-563-9505, www.firesidetheatre.com

The **Glacial River Trail** offers miles of scenic biking and walking opportunities, connecting Fort Atkinson to neighboring communities while showcasing the area's natural beauty. The trail features paved and crushed limestone surfaces, public art and access to parks and riverfront areas.

The **Hoard Historical Museum and National Dairy Shrine**, 401 Whitewater Ave., preserves the history of Fort Atkinson, Jefferson County and America's dairy industry. Exhibits highlight William Dempster Hoard, Chief Black Hawk, Abraham Lincoln, Wisconsin agriculture and the National Dairy Shrine. Admission is free. 920-397-9914, www.hoardmuseum.org.

HAPPENINGS

Fort Farmers Market - Saturdays, May through October. One of Jefferson County's premier farmers markets featuring fresh produce, baked goods, meats, cheeses, crafts and specialty products from local vendors. Downtown Fort Atkinson.



Fort Atkinson Cruise Nights - Select summer evenings. Classic cars, trucks, motorcycles, food and live music attract "hundreds of participants and spectators to Jones Park.

Fort Atkinson Community Band Concerts - Summer concert series at Barrie Park featuring free performances by the community band.

Summer Concerts in Barrie Park - Popular out-

door performances featuring regional musicians and benefiting local charities.

Kids From Wisconsin - Aug. 2 Annual summer performance at the FCCU Performing Arts Center featuring the state's premier youth musical troupe.

Dairy Day at the MOOseum - Family-friendly event celebrating Wisconsin's dairy heritage with exhibits, demonstrations and activities at the Hoard Historical Museum.

Ice Cream Social and Independence Day Celebration - Historic Fourth of July celebration featuring music, treats and patriotic activities at the Hoard Historical Museum.

Fort Atkinson Generals Baseball Festival - Home Talent League baseball action, family activities and community entertainment at Jones Park.

BASE Wings & Wheels Fly-In Breakfast Popular fundraiser featuring aircraft displays, classic vehicles, breakfast and family activities.

Fort Atkinson Holiday Parade and Downtown Holiday Events - Seasonal celebrations featuring festive lights, family activities and visits from Santa.

Fort Atkinson Historical Society HISTORICAL MUSEUM NATIONAL DAIRY SHRINE'S VISITORS CENTER

Welcome to Fort Atkinson!

A regional history museum telling the story of Fort Atkinson and the surrounding area.

Discover the mystery of the area's effigy mounds built by early inhabitants and the 12,000 years of human history around Lake Koshkonong.

Learn about the Sauk warrior, Black Hawk, the 1832 Black Hawk War, and its role in our history.

Explore the contributions of William Dempster Hoard, the 16th governor of Wisconsin and the father of American dairying.

Find out how Lake Koshkonong inspired Lorine Niedecker, a world famous poet from Fort Atkinson.

Visitors will also enjoy the National Dairy Shrine's museum, dedicated to dairy farming: past, present, and future.

FREE ADMISSION:
There is no admission charge to visit the museum

Exhibits include:
Mystery of the Mounds effigy mound exhibit, Duck Hunting on Lake Koshkonong, the Lincoln Era Library, and more.



The Lincoln Era Exhibit



Lorine Niedecker Exhibit



The Bird Room

Museum Hours: Tuesday – Saturday, 9:30am – 4:30pm
Hoard Historical Museum
401 Whitewater Ave. • Fort Atkinson, WI 53538
Phone: 920-397-9914 • www.hoardmuseum.org

BAIT BOX ON THE ROCK

Family, Fishing, Fun!!

People tell us we have a better selection of lures than big box stores

\$5 OFF
any purchase of \$25 or more!
(Expires October 31, 2026)



Hours Of Operation
6:00am to 6:00pm
Seven Days A Week



1240 Riverside Dr.
Fort Atkinson, WI
920-691-2602

Lake's history rich with Indians, rice

By Mark Scarborough
Reprinted from 2013
Lakes Issue

One of the earliest settlers in what eventually became the Rock County town of Milton, at the mouth of Lake Koshkonong near Newville, was Elias Ogden, who claimed land there in October 1836.

By August 1837, Ogden and his brother, George, were permanent residents. They settled near the family of Augustus Churchill.

Many of these settlers were lured here by the pipedream of the Rock River Canal Company, which proposed linking Fort Atkinson to Milwaukee with 51 miles of canal. A suggested \$800,000 "internal improvement" project, the canal was one of southern Wisconsin's first government boon-doggles.

Construction commenced July 4, 1839 but, by 1844 after \$57,000 had been spent, only one mile of canal had been completed. The failed canal fizzled out.

Local Ho-Chunk Indians, who lived here hundreds of years before the 1832 Black Hawk War showcased the landscape to future Anglo settlers, had a legend about a water monster that lived in Lake Koshkonong.

The monster must have been a puny thing, because the pre-dam Lake Koshkonong wasn't very deep.

An off-told bit of HoChunk mythos chronicles two brothers determined to prove the lake monster a fantasy, only to have their canoes capsized in a storm and end up as corpses, with white clay stuffed in their noses.

The white clay was apparently a sign that the bony fingers of the monster had "touched" them last.

Less mist-shrouded, paleo-historic archeological digs throughout southern Wisconsin suggest that real-life ancestors of historic Native American tribes were living here as early as 12,000 years ago.

Ancient "mound builders" apparently arrived on the scene about 2,500 years before the traditional birth year of Christ.

Ho-Chunk, Potawatomi, Sauk, Fox and Menominee tribes have lived in this area in more recent, "historic" times, stretching from the 18th to 20th centuries.

At Carcajou Point in the Jefferson County town of Sumner, there was once a large HoChunk settlement known as White Crow's Village.

Although a huge gathering place in the early 1800s, a dedicated and deliberate policy of Indian removal and the devastation of disease and persecution had largely removed tribes from this neighborhood by the 1890s.

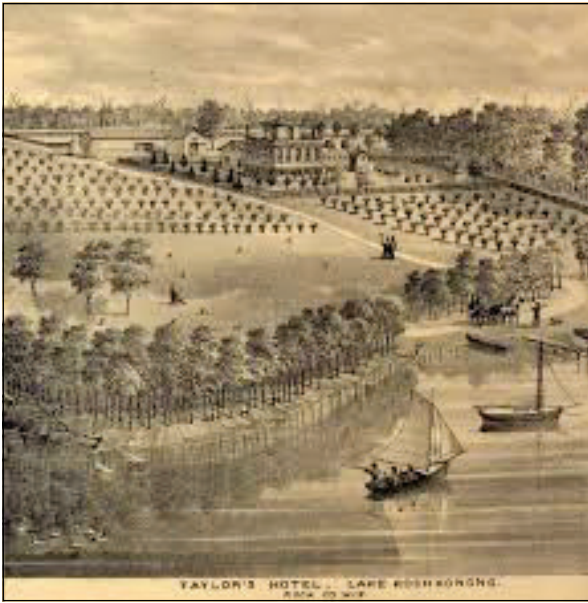
One of the last, historic-era Native American burials in this area was the 1894 internment of a son of Moses Decorah in Sumner Cemetery.

Sometime after 1785, some French traders and their Indian women were living at the edge of Koshkonong.

A French trader named Thiebeau, for whom Thiebeau's Point was named, was murdered there by one of his two wives in 1838.

A son was also apparently involved in the mayhem, which was tied to Thiebeau's unwillingness to forsake the riches of Wisconsin to resettle his family on the Iowa side of the Mississippi River.

Another place name on Koshkonong can be traced to this early influence of French traders.



Charley Bluff was named after Alexander Charles Vieux, an early French settler and fur trader who sold goods to Solomon Juneau, the man who founded the community that became Milwaukee.

Originally built sometime between 1846 and 1851, the Indianford dam that created the "modern" Lake Koshkonong was replaced by concrete dams in 1917 and 1931.

The first wooden dam there harnessed water power to run a saw mill.

A power house was added to the Indianford dam in 1880 and power was generated there until 1962.

These dams have raised the water level of Koshkonong from roughly three feet to the lake's current average depth of about six feet. Thanks to the action of the Indianford dam, Koshkonong now has a surface area of 10,460 acres.

At the time the HoChunk first lived here, however, Rock River was a swift, flowing stream with an exposed bed of giant rocks and Koshkonong itself was so thick with stalks of wild rice that settlers silly enough to try to glide through in a canoe sometimes got lost as the sun set.

Wisconsin's premiere pioneer scientist Increase Lapham mapped Indian mounds of the Lake Koshkonong area in 1850.

"A few miles above Fulton, the river expands into a broad and shallow lake, known by its Indian name of Koshkonong," Lapham wrote. "There is a rapid current, extending about six hundred feet into the lake."

"Wild rice was growing abundantly over almost its entire surface, giving it more the appearance of a meadow than a lake." There were plenty of fish and mollusks in Koshkonong's waters, finding "plenty of food in the warm mud beneath," Lapham wrote.

"When August came, Lake Koshkonong was like a great magnificent meadow, and later on, as fall approached, it was like a vast grain field," early Fort Atkinson pioneer Lucien B. Caswell wrote in 1914 about what Koshkonong was like in the 1840s.

"The wild rice grew in it from five to seven feet high above the water, and so thick all over

that it was difficult to push a canoe through it. It was one solid mass of rice.

"Here and there upon its yellow surface could be seen two Indians in a canoe gathering from the thickest part their winter stock. The vast field was literally alive with wild ducks."

Today, 28 species of fish are found in the lake. The skilled angler can come away with mouthwatering catches of perch, walleye, channel and flathead catfish, white bass, largemouth and smallmouth bass, bluegill, crappie, muskie,

and northern pike.

Rough fish species – including carp and sheepshead – are also a constant challenge.

As well as being abundant in fish species, Koshkonong is rich in lore.

Some puzzled travelers claim to have seen a woman on foggy nights on the roadways around the lake. When they've stopped to render assistance, the woman has simply vanished.

However, fresh deer tracks often can be found where the woman seemed to be.

There is also a wisp of a ghost story connected to the old Taylor House, now known as the Lake House Inn.

In the 1880s, twin girls stayed there, with one of the young women losing her life in Koshkonong's waters.

Some folks think the other girl stayed behind and still

awaits her sister's return.

Koshkonong was also the 19th Century playground of millionaire hunters.

Among those who stopped long enough to snag more than their fair share of ducks on the lake from the late-1860s to the mid-1890s were presidents, generals, and businessmen.

Canvasback duck hunters came from throughout America to make magnificent shots.

Sandy Griswold, an Omaha, Neb., sports writer, remembered legendary Lake Koshkonong duck hunting days of the 1870s and 1880s while writing a 1924 letter to the Janesville Gazette.

"It was the best place for duck in the whole United States, except Chesapeake Bay," Griswold wrote then. "We never brought down anything but canvasback duck. They were there by the thousands."

Another Koshkonong claim to fame has to do with Black

Hawk Island, a Jefferson town of Sumner spit of land that is not an island and was never visited by the Sauk warrior Black Hawk.

This peninsula has been the site of annual floodings since at least 1845.

Legendary poet Lorine Niedecker, often ignored in her hometown of Fort Atkinson but known worldwide as a brilliant wordsmith, once lived in a cabin on the "island" and wrote some eloquent poems about a life governed by unpredictable rising river tides.

The lake is 5.5 miles down river from Fort Atkinson and extends throughout southeastern Dane and northern Rock counties.

Power companies proposed a \$1 billion nuclear plant on Koshkonong in the mid-to-late 1970s, but these plans were killed by a consortium of farmers, lawmakers and environmentalists.



TALLMAN ARTS FESTIVAL

Fun for the whole family, with art, music, food and drinks!



ROCK COUNTY
HISTORICAL SOCIETY



Saturday, August 1 • 10 a.m. - 4:00 p.m.
Sunday, August 2 • 10:00 a.m. - 3:00 p.m.

www.rchs.us/tallmanart



ENJOY OUR FRESH PRODUCTS

Along with A Bit of Nostalgia

601 Jones Avenue
Fort Atkinson, WI 53538
920-563-2963
ShopJonesMarket.com





Deli • Jones Dairy Farm Meats
Lunch Menu • Wisconsin Products
Party Platters • Events









Rock out and give back at Barrie Park

By Carley Lintz
Special to the Lakes
Edition

Nothing says summer like sitting outside, enjoying good food and listening to incredible live music while surrounded by your community.

What's even better: doing all that while raising money for a good cause.

This was the idea behind Fort Atkinson (FA) Summer Charity Concerts according to founder Megan Hartwick.

"When I returned to the Fort Atkinson area in 2013 after five years living in Chicago, I knew I was going to miss sitting outside enjoying a beverage and listening to great live music," she said. "I knew what a great space Barrie Park was with the incredibly unique band shell structure so my idea to have live music grew from there."

The event is not just about music and having a good time, though; it's also about giving back the Fort Atkinson community. Over the last six years, the FA Summer Charity Concerts have raised more than \$47,000 to support getting local youth involved in community engagement.

The main beneficiary of concert proceeds has been the Lend a Hand program at BASE (Bad-

gerland After School Enrichment program), which helps students get involved with philanthropic efforts. Funds also go toward a FA Summer Charity fund for graduating high school seniors of Fort Atkinson High School.

"We are raising money for a really amazing effort — to get kids more involved into their communities and to grow up understanding the importance of community engagement and why they should support others and give back when they can," Hartwick said.

The entire event series is supported through sponsorships by local businesses and individ-

ual donations. Hartwick and her partner, Chris Scherer, who handles production needs, both volunteer their time to organize and run the concerts. Even the participating bands play for free — all to ensure worthy causes receive the maximum donation.

This year, seven bands will be rocking Barrie Park Wednesdays throughout the season. The lineup includes both crowd favorites from previous concerts and a few first-timers to the Barrie Park band shell. So, be sure to mark your calendar because this concert series is a can't-miss event for people of all ages.

"One of the things I love most about these community concerts is that our attendee range is huge," Hartwick said. "My son attended his first concert at three days old and I've spoken with a woman in her nineties who loves to come down and listen to the music. The concerts are for families, kids, teens, older adults, young professionals — everyone."

Schedule of events
June 24: Fort Night Band
July 15: Katie Scullin
July 29: Altar Boy Picnic
August 12: Twang Dragons
August 26: Jason Thomas Band

Cost: Admission is free to the public.

Location: Barrie Park, 210 Robert Street, Fort Atkinson, Wis.

Food/Drink Policy: Attendees can bring outside food and drink, including alcohol.

To learn more about the Fort Atkinson Summer Charity Concerts, visit www.facebook.com/FA-SummerCharityConcerts.

If you have additional questions, contact Megan Hartwick at facharityconcerts@gmail.com.



The Dairy Shrine



The National Dairy Shrine is an American dairying group founded in 1949 and based in Wisconsin. The shrine promotes the dairy industry and records its history. As of 2026, the organization had over 18,000 members from most facets of dairying. The Dairy Shrine is located in the Hoard Museum.

**Take a Drive to JM Carpets Flooring Design Center
for the Best Selection and Service!**

**12,000 SQ. FT SHOWROOM
LARGE INVENTORY**

- **Carpet, Hardwood, Ceramic Tile, Luxury Vinyl Plank & Tile, and Vinyl Flooring**
- **Window Treatments, Shades, Shutters and Blinds**



JM Carpets
Flooring Design Center

www.jmcarpets.net
107 S. Main St., Fort Atkinson
(920) 563-0820

FREE Measure, FREE Estimates, FREE Advice

- **Non-Commissioned Sales Staff & Designers**
- **Professional Installation**

**Hours: Monday-Wednesday 9-5
Thursday 9-8 • Friday 9-5
Saturday 9-4**



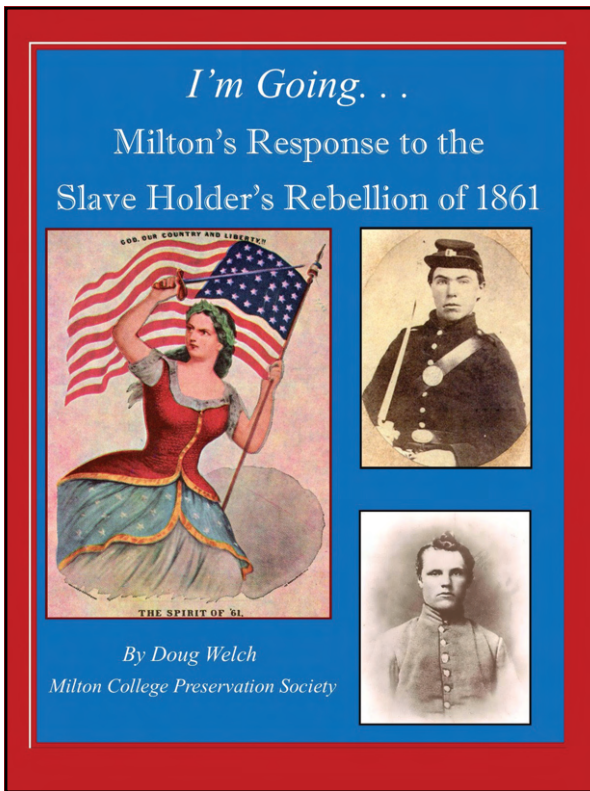
Preservation Society keeps Milton College alive

Submitted by Doug Welch

Main Hall on the former Milton College campus has been undergoing a steady metamorphosis over the past six years that will transition the 171-year-old building into one of the most historically significant museums in southern Wisconsin.

When Milton College closed its doors in 1982, it was the longest-serving institute of higher learning in the state of Wisconsin. Founded as Milton Academy in 1844 by Joseph Goodrich, the school was among the first of its kind in the Wisconsin Territory. Its history predates statehood and the founding of the University of Wisconsin by four years. Goodrich is credited with founding the Milton community in 1838 and built the Milton House, a unique hexagon inn and business block. The Milton House is Rock County's only National Historical Landmark, designated as such for the role it played on the Underground Railroad during the years prior to the Civil War.

Following the closure of the school in 1982, Main Hall has been owned by the Milton College Preservation Society, a non-profit 501 © 3 organization that maintains



A 32-page companion magazine for the Civil War Room in Main Hall is available for visitors to take home. The magazine includes the unique, heroic, and heartbreaking stories of some of the more than 325 Milton Academy men who served in the Union Army.

Main Hall and alumni magazine dedicated to alumni relations for those who attended the school. More than 500 individuals receive the quarterly Blue and Gold magazine dedicated to alumni and the history of Main Hall. Main Hall has two great spaces for community use. Its third-floor chapel might very

well be the most historic room in the community. The MCPS rents the space for weddings, recitals, and large meetings and gatherings. The lower level "Century Room" is a lounge area with a kitchen and restrooms available for smaller gatherings of 50 people or less.

For the past six years, the MCPS board of directors has taken an aggressive approach in transitioning seven rooms in Main Hall to tell a comprehensive narrative of the school's rich history.

"We really wanted to make this building accessible to the public for generations to come," MCPS President Doug Welch said. "We want to make sure the public rooms in the building can be enjoyed and utilized by community members and then while they are here, people can go in and out of the museum rooms and learn a little something about Milton College.

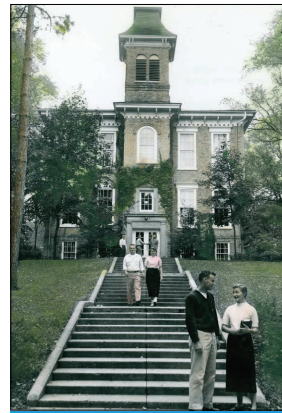
"We think by hanging those

unique stories on the walls of this building, then we are doing exactly that. These stories will live on for however long these walls will hold them up. For another 171 years, we hope."

In 2019, Welch stepped in as Main Hall's administrative director. He has been

president of the organization since 2014. Prior to 2019, Welch worked as the assistant director at the Milton House Museum. For 22 years, he was the managing editor of the Milton Courier newspaper.

See **PRESERVATION**, page 45



Main Hall

Milton College Preservation Society
513 College St., Milton, WI

Milton College
1844-1982

Explore Wisconsin's Most Historic College Campus

- State's First Co-Ed Campus
- Unique Civil War History
- The Cradle of Public Education in Wisconsin
- Brother Joseph Dutton Veteran's Flag

10 a.m. - 4 p.m. Tuesdays-Fridays

608-868-2354

Email:

doug@miltoncollegesociety.com

Olin's AUTO SERVICE

**AUTO/TRUCK REPAIR & CAR CARE
FOREIGN & DOMESTIC**

*Safety inspections & alignment
checks are always free!*

(608) 868-1661

342 S. John Paul Rd., Milton, WI 53563

STAY IN THE KNOW

Explore Lake Life Like a Local



The Lake Kosh & Rock River Business Guide App

EAT | PLAY | SHOP LOCAL

SCAN ME ↑



Same "A trusted source....."



SALES
520 E. RICHARDSON SPRINGS RD.
EDGERTON, WI 53534
608-884-9415

SERVICE
10354 N. KIDDER RD. EDGERTON, WI 53534
608-868-7765

STORE HOURS
MON 9:00 AM - 5:00 PM
TUE 9:00 AM - 5:00 PM
WED 9:00 AM - 5:00 PM
THU 9:00 AM - 5:00 PM
FRI 9:00 AM - 5:00 PM
SAT 9:00 AM - 3:00 PM
SUN 9:00 AM - 2:00 PM

www.ROCKRIVERMARINA.com

ROCK RIVER THRESHEREE INC.



Get ready for the 70th
Rock River Thresheree.
September 4, 5, 6 and 7, 2026.

**Featuring Minneapolis
Moline Collectors
National Summer Show.**

Feature gas engine is Fairbanks Morse.

*2026 is going to be
an exciting year that
you'll definitely want
to be here for.*



Daily Parade of Power at 2:00 p.m.

Friday is Seniors Day, \$8 Admission • ATMs available on the show grounds
Many Food Stands • Ample Parking with Shuttles • Admission \$10, Children 12 and Under Free
Contact: www.thresheree.com • For general info call: 608-868-2814 • Flea Market: 608-728-3407

Service animals ONLY, no pets on the grounds! • Check us out on Facebook @ Rock River Thresheree
Sponsored by: Curt Hanson • Mid-State Equipment

PRESERVATION

Continued from page 44

"With the exception of the Milton House, Main Hall is the most historically significant building in Rock County, if not all of southern Wisconsin," Welch said. "It has a rich abolitionist history that played out a number of ways. The school was a pioneer of women's education. When we look at enrollment records during the 1840s and '50s we find that 35- to 40-percent of the student body was comprised of women. That was unheard of at the time. The building that still stands next to Main (Goodrich Hall, constructed in 1857), was the first coed dorm in the state."

Beginning in the 1870s and through the early 1900s, Milton College became known as the "Cradle of Public Education" in the State of Wisconsin. No fewer than four Milton College graduates or faculty served as the State Superintendent of Public Instruction. That tradition began with William Whitford, who served as the school's president from 1858 until his death in 1902. While serving in the state legislature in the late 1860s, Whitford introduced a bill to establish women's suffrage. He introduced a more successful bill to establish the State Board of Regents governing public education in Wisconsin. Whitford served on the board of regents from 1867 through 1882 and was state superintendent of public instruction from 1877 to 1882.

Three more Milton men served the office through the early 1900s. These



Main Hall was constructed in 1855 and served as the heartbeat of Milton College through the time of the school's closing in 1982. The grandeur of Main Hall was captured by Mike Gouvion in the photo taken during the Autumn of 2023.

educators each advocated for and established the Normal School concept for colleges throughout the state. The Normal School concept advances teacher training for those who wish to teach in public schools. A fifth Milton College graduate, Albert Salisbury, became the first president of Whitewater Normal School – now known as UW-Whitewater.

A room in Main Hall is being dedicated to telling the stories of the pioneering educators of the late 1800s.

The first room converted is a timeline room that tells parts and pieces of the school's history on timeline boards. Two rooms have been dedicated to the rich athletics history of Milton College. Many communities in the region were positively influenced by the coaching of those who played at Milton College. The notable alumni include Edgerton's Jack Gregory, Evansville's Ron Grovesteen, and Clinton's Whitey Gilbertson. Milton coaching legend Jerry

Submitted photo

Doug Welch conducted school tours of the Civil War Room for Milton eighth graders during September 2025.

Submitted photo

Schliem first came to Milton in 1971 to be a part of the staff of Milton College football coach Rudy Gaddini.

Gaddini's most famous protégée is Dave Krieg, a four-year starting quarterback for the Wildcats who went on to a 19-year career in the NFL, most notably as the starting quarterback for the Seattle Seahawks. The story of Krieg's ascension to a 19-year NFL career is among the most unique and unlikely in league history.

Main Hall's most recently completed project is a must-see for Civil War buffs. A room dedicated to telling some of

the stories of the more than 325 men with Milton Academy ties who fought for the Union Army includes more than 30 image and information display boards. A 32-page companion magazine has been published for visitors to take home with them.

Other unique items on display at Main Hall include a 1941 letter sent by Albert Einstein to Milton College faculty member Arthur Lamberg. Lamberg, a native of Vienna, Austria, was an engineering professor at Milton College who had escaped Nazi-dominated Europe in 1940 with an assist

from Einstein. Through the end of World War II, Lamberg had no fewer than 56 relatives perish in Polish concentration or work camps.

Perhaps the most unique item on display at Main Hall is a veteran's flag sent to Milton College by Brother Joseph Dutton in 1926. Ira Barnes Dutton attended Milton Academy from 1859 through the time he enlisted in the Union Army in 1861. Following the war, Dutton became a devout Catholic, changed his name to Brother Joseph Dutton and devoted his life to assisting the victims of leprosy at the leper colony in Molokai, Hawaii. Dutton had divested himself of all worldly possessions. One way Dutton showed appreciation to various organizations, institutions, or individuals was to send them a veteran's flag that had been sent his way by Wisconsin GAR Post Commanders. In 1926, Dutton sent the flag to Milton College in appreciation of the education he received. The flag has been pressed, cleaned, and framed and is on display at Main Hall.

Brother Dutton's legacy is being considered for sainthood through the Vatican's canonization process.

"When you stack one story onto another, you realize Main Hall connects such seemingly random historical figures to one another," Welch said. "From William Whitford to Albert Einstein, to Dave Krieg and Brother Dutton.

"Main Hall's history is as important, rich, and unique as any building in Wisconsin"

Welcome to Milton.

We are glad you are here.

Your Neighborhood Coffee Shop

Looking for coffee and breakfast near Milton, WI? Sharla's Coffee Stop offers handcrafted lattes, espresso drinks, fresh pastries, and easy grab-and-go breakfast options.

Services:

- Handcrafted lattes
- Espresso drinks
- Fresh pastries
- Grab-and-go breakfast options
- Signature coffee roasts
- Dave's Power Blend - Espresso Blend
- DNR - Breakfast Blend



SHARLA'S
COFFEE STOP



525 College Street, Milton, WI 53563
608-322-5836 • www.sharlascoffee.com

Janesville Hot Spots and Happenings

HOT SPOTS

Janesville Performing Arts Center

Sunday, Jun 14, 2026 at 2:27 p.m.

The Janesville Performing Arts Center (408 S. Main St.) is a 633-seat theater located on the site of the original Janesville High School. Completed in 2004, the beautifully restored facility features Prairie-style stained glass, ornate plaster molding and original light fixtures. The center hosts a wide variety of concerts, theatrical productions, comedy shows and family-friendly performances throughout the year. For tickets and event information, call 608-758-0297 or visit www.janesvillepac.org.

Rock Aqua Jays Water Ski Show Team

The nationally acclaimed Rock Aqua Jays Water Ski Show Team performs free shows twice weekly between Memorial Day and Labor Day at RAJ Stadium in Traxler Park along the Rock River. Watch talented skiers perform gravity-defying pyramids, jumps, ballet lines and barefoot skiing routines in entertaining themed shows. Admission is free, although donations are appreciated. For show schedules and information, visit www.rockaquajays.com or call 608-757-3171.

Helen Jeffris Wood Museum Center & Lincoln-Tallman House

The Helen Jeffris Wood Museum Center (426 N. Jackson St.) and nearby Lincoln-Tallman House (440 N. Jackson St.) offer visitors a fascinating look at the history of Janesville and Rock County. Exhibits showcase local industry, culture and notable residents, while the historic Lincoln-Tallman House highlights the city's rich architectural and social heritage. Learn more at www.rchs.us or call 608-756-4509.

Rotary Botanical Gardens

Rotary Botanical Gardens, 1455 Palmer Dr., features 20 acres of internationally themed gardens showcasing more than 4,000 varieties of plants. Visitors can stroll through Japanese, Scottish, French, Italian, English Cottage and Formal Gardens, along with numerous seasonal displays. The site also includes a visitor center, gift shop and event facility available for weddings, reunions and meetings. For hours and admission information, visit www.rotarybotanicalgardens.org or call 608-752-3885.

Downtown Janesville

Downtown Janesville has become one of southern Wisconsin's most vibrant destinations for shopping, dining, entertainment and community events. Visitors can explore unique boutiques, restaurants, public art installations and scenic views of the Rock River. Seasonal festivals, concerts and markets make downtown a year-round attraction.



fresh meats, baked goods, flowers, crafts and specialty products from vendors throughout Rock County. For information, visit www.rockcountymarket.com.

Crafting Excellence: Pauline Pottery and Pickard China Ongoing Exhibit

Helen Jeffris Wood Museum Center, 426 N. Jackson St.

This exhibit showcases the artistry and craftsmanship of Pauline Pottery and Pickard China, two names recognized nationally for their beauty and quality. Visitors can explore pieces created by notable artists while learning about the important role these companies played in the region's history. For museum hours and information, visit www.rchs.us.

Walk Across Rock County

Various Dates Throughout the Summer

Join the Rock County Chapter of the Ice Age Trail Alliance for guided hikes on scenic trails throughout Rock County. Hikes vary in length and difficulty and provide opportunities to explore the area's natural beauty while learning about local history and ecology. Visit www.janesvillecvb.com for upcoming dates and locations.

Janesville Morning Rotary Pie Ride

June

Cyclists of all skill levels are invited to participate in this annual bicycle tour through scenic southern Wisconsin. Multiple route options allow riders to choose a challenge that fits their experience level. Participants enjoy well-marked routes, rest stops and the event's famous pie at the

finish line. Visit www.pieride.org for current-year dates and registration information.

Classic Cruzers Downtown Car Show

Summer Dates

Classic cars, live music, food vendors and family-friendly fun fill downtown Janesville during these popular summer cruise nights. Car enthusiasts from throughout the Midwest gather to showcase vintage vehicles and share their passion for automotive history.

Movies in the Park

Summer Evenings

Optimist Park, 4201 Ruger Ave.

Bring blankets and lawn chairs for free family movies under the stars. Concessions and family activities begin before showtime. Check the City of Janesville Parks and Recreation Department for this year's movie lineup and schedule.

Veterans Benefit Car Show

Summer

Hosted by the Classic Cruzers Club, this annual event features hundreds of classic and specialty vehicles, food, music and awards. A portion of proceeds benefits programs supporting local veterans.

Freedom Fest

Late June

New Life Assembly of God

One of the area's largest community celebrations, Freedom Fest attracts thousands of visitors with live entertainment, carnival rides, food vendors, children's activities and one of the region's most spectacular fireworks displays. Admission and parking are free.

Star Spangled Saturday

Late June Traxler Park

June 27, 2026

The Rock Aqua Jays present this annual Independence Day celebration featuring food trucks, live music, family activities, water ski performances and a spectacular fireworks display along the Rock River.

Mercury Open Water Ski Tournament

Summer

RAJ Stadium, Traxler Park

Watch some of the nation's top water ski show teams compete in one of the Midwest's premier tournaments. Teams perform choreographed shows featuring jumps, pyramids, doubles, ballet lines and barefoot skiing in front of expert judges.

Music at the Marv

Summer Concert Series

Marvin W. Roth Community Pavilion

Enjoy free outdoor concerts featuring local and regional musicians in downtown Janesville. The popular summer series offers a variety of musical styles and provides a great opportunity to experience the city's vibrant arts scene.

Downtown Festivals and Special Events

Throughout the year, downtown Janesville hosts art walks, seasonal celebrations, specialty markets, holiday activities and community festivals that draw visitors from across the region. Check the Janesville Area Convention & Visitors Bureau and Downtown Janesville event calendars for current schedules and details.

Happenings

Janesville Farmers Market

Saturdays, May through October

Town Square, 65 S. River St.

One of the region's premier outdoor markets, the Janesville Farmers Market features dozens of local vendors offering fresh produce, meats, cheeses, eggs, baked goods, flowers, handcrafted items, artwork and specialty foods. Live entertainment and seasonal activities add to the festive atmosphere. For more information, visit www.janesvillefarmersmarket.com.

Rock County Farmers Market

Sundays, Mid-May through October

Nature's Touch Garden Center, 5013 W. Highway 11

This popular weekly market features locally grown produce,

Janesville Aqua Jays Bring High-Flying Fun to the Rock River

By Diane Everson
Publisher



For more than six decades, the Janesville Aqua Jays have thrilled audiences with one of Wisconsin's premier water ski shows. Performing on the Rock River at Traxler Park in Janesville, the Aqua Jays combine athletic skill, teamwork, and entertainment into a family-friendly spectacle that draws visitors from throughout the region.

Founded in 1961, the nonprofit ski team has earned a national reputation for excellence. The Aqua Jays have captured numerous state and national championships and have helped develop some of the sport's top competitors. Yet despite their competitive success, the team remains dedicated to providing affordable summer entertainment for local communities and visitors alike.

A typical Aqua Jays performance features precision ballet lines, daring jumps, barefoot skiing, human pyramids, and other crowd-pleasing stunts. Skiers of all ages participate, showcasing the family-oriented spirit that has become a hallmark of the organization. Behind every show is a dedicated group of volunteers who help operate boats, maintain equipment, and support the team's mission.

Throughout the summer, the Aqua Jays host regular evening performances on the Rock River, giving



spectators an opportunity to enjoy a unique Wisconsin tradition. The shows offer a blend of excitement and hometown charm, making them a popular destination for families looking for an entertaining night outdoors.

Whether you're a longtime fan or seeing a water ski

show for the first time, the Janesville Aqua Jays provide an unforgettable experience. Their commitment to excellence, community involvement, and family entertainment continues to make them one of the area's most celebrated summer attractions.

JOIN US FOR SUMMER FUN!



Open every day at 10 a.m.

"Come as a stranger, leave as a friend!"

Happy Hour: Monday thru Friday 3 to 6 p.m.

Great Food! "Better than Bar Food"

Bucket Specials during WI sporting Events

Competitive Sand Volleyball Leagues!

3538 E. County Rd N
MILTON, WIS.
(608) 868-7884

Safe Ride Program

available till bar time
We are Proud Members of the Wisconsin Tavern League!

Tavern League's SafeRide program promotes safety and saves lives

By *Tristan McGough*
Special to the Reporter

"I've been a member of the Tavern League's SafeRide program for about 10 years now," said Jose Reboller, owner of Fiesta Garibaldi, the premier Mexican restaurant located at 310 Milwaukee St, Johnson Creek, just off I-94. "I know it's gotten people home safely and probably has saved lives...not just the driver, but others, too."

Reboller's sentiments are shared by thousands of other Wisconsin business owners, as well as many other people who have benefited by the Tavern League of Wisconsin's (TLW) SafeRide Program, which has greatly expanded over the last 10 years and has helped contribute to a decline in alcohol-related fatalities. In 2021, the TLW SafeRide Program provided over 42,000 free rides home to patrons around the state. In 2023, the SafeRide program provided 45,527 free rides home from 1,730 TLW-member establishments. The program has provided over 1,000,000 rides since 2004.

The Tavern League of Wisconsin exists to provide services to members that are not available to them as individuals and to use the collective strength of its membership to accomplish, as a group, goals that cannot be accomplished alone. The League provides its members with services such as legislative and governmental relations, legal information, educational services and promotes the industry on behalf of its membership.

Founded in 1935,

the Tavern League of Wisconsin is a 501(c)(6) not-for-profit organization which also has a charitable arm, the Wisconsin Tavern League Foundation which is a 501(c)(3). With over 5,000 members, the Tavern League of Wisconsin is the largest trade association in the United States to exclusively represent the interests of licensed beverage retailers. The TLW is comprised of 70 local leagues representing every county in the state of Wisconsin.

More than 161,000 jobs are generated by the alcohol industry in Wisconsin, and the League helps to organize the many members involved, yielding an important, positive impact on the economy, with pre-pandemic figures close to \$3.2 billion in total annual wages paid, and taxes totaling more than \$2.6 billion. In fact, in 2021, the TLW contributed more than \$13.5 million to support nearly 10,000 charities across the state.

Sharon Ward, representing the 9th District—the Milwaukee County Tavern League—of the TLW, said, "Our members give back to their communities with generous fundraisers to benefit a wide variety of charities. However, the first goal of the SafeRide Program is to offer a free ride home to keep our roads safe."

Ward also offered the rationale behind the SafeRide Program. "There is no business member I've known throughout the years who wanted to be the headline 'drunk driver from so-and-so's bar.' According to our data, Wisconsin has



seen a 58% decrease in alcohol related deaths, a 47% decline in injuries and a 38% decrease in crashes over the last 10 years. Those are pretty eye-opening statistics and a very good reason to support the program and keep it going. We are set to expand. And every patron of a participating establishment should know that the voucher for the free ride isn't hard to get. It's just as easy as ordering a drink. 'Hey, can I get one of those safe rides?'"

Ward said that participating establishments have the SafeRide logo either hanging in the window or on a wall. "All you have to do is ask," she said. "As always, we encourage you to drink responsibly. However, if you feel like you've had one too many, ask your bartender if their establishment is a Tavern League member offering the SafeRide program," Ward emphasized.

Reboller agreed. "All our bartenders are trained to offer the program to anyone who asks, and to suggest it, if it looks like they might benefit from it."

Kathy Proffitt, TLW's SafeRide Coordinator for Jefferson County said, "The Tavern League of Wisconsin and our members are proud to serve our community.

One of our top priorities is to keep our patrons safe. That is why we offer the SafeRide program. The goal of SafeRide is to eliminate drunk driving on Wisconsin's roadways."

Due in part to the SafeRide program, Wisconsin has witnessed a 44% decline in OWI convictions since 2007 and nearly a 50% decline in alcohol related fatalities in that same time period. The program is funded by Tavern League fundraisers as well as through and OWI convictions. The program will continue to grow as the state has funded the program to expand to 60 counties, as alluded to by Ward.

How is the program funded? The nearly \$1 million cost of the SafeRide program is shared by TLW members and funds generated by surcharges on OWI convictions. In 1999, Wisconsin Act 109 established a surcharge on every Wisconsin DWI

conviction to be used for alternative transportation from Class B licensees to a customer's home. The Tavern League office administers this program with the Department of Transportation oversight.

Proffitt wanted to call attention to the major goals of the TLS, which are stated on its website: To represent every member and maintain a strong voice in the legislative process in Madison and Washington. To keep members abreast of current activities and future goals of the Tavern League of Wisconsin. To update licensees on legal and legislative issues affecting the alcohol beverage industry on the state and federal level. To provide educational opportunities facing alcohol beverage retailers. To keep the lines of communication open through various channels and levels of representation, including the Board of Officers and Directors, Local League Presidents and Secretaries, monthly local league meetings, District-wide caucuses, statewide conventions, bi-monthly On Premise magazine, and monthly newsletters. To offer licensees the opportunity to network with fellow members. To provide members with the perfect balance of

motivation, education and entertainment. To create goodwill through the community and safety through our SafeRide program in our communities. To continually strive to be the most valuable source of information for our members so that they cannot afford to not be a member.

Further, each spring and fall, the Tavern League of Wisconsin hosts a convention and trade show — an opportunity to connect with members from around the state and find solutions for their businesses.

What should patrons know regarding the SafeRide Program as a practical option? Someone can locate the nearest Tavern League member and SafeRide provider on the TLW website at <https://www.tlw.org/#> under SafeRide/Find a SafeRide Provider. Or they can download the TLW SafeRide mobile app directly from their phone. The app shows which member establishments are nearby, according to closeness of location. It's free and available for anyone's Apple or Android device.

It's the best way to the SafeRide Program into practice, furthering the cause of safety and ensuring lives.

Rules of the SafeRide Program and its Code of Ethics

By *Tristan McGough*
Special to the Reporter

The SafeRide Program has clear Rules that its members abide by. According to TLW's website, the rules are:

1. Establishment will be enrolled in the Tavern League SafeRide program at no cost for 6 months.

2. Only the owner or employee of the establishment may initiate a SafeRide. Patron may not call for their own SafeRide.

3. Patron must be dropped off at residence. No SafeRides are permitted to other bars, restaurants, or gas stations.

4. SafeRide may not be prearranged.

5. SafeRide may not be used as employee transportation and/or regular or frequent transportation.

Underlying these Rules is a wider, TLW Code of Ethics:

◆ The Tavern League of Wisconsin believes in taking good care of our customers and protecting against the effects of alcohol abuse. We want our



customers to have a good time and we are interested in their well-being.

◆ We reserve the right to refuse service to persons we believe are intoxicated. Friends don't let friends drive intoxicated. We want to be your friend and make sure you get home safely.

◆ We will not encourage excessive drinking. You count with us. May we count on you to have a soft drink, coffee or non-alcohol beverage when you feel you may have had too much to drink? We want you to be able to come back again.

◆ We want you to get home safely. If you need a ride, we will try to arrange safe transportation home. We hope you will consider doing the same for your friends.

◆ We will not knowingly

serve an underage person not accompanied by a parent or a legal guardian and will check age identification when in doubt. We ask for your cooperation.

◆ We will not encourage or permit alcohol consumption contests on our premises.

◆ We will keep ourselves informed, and encourage all of our customers to help us enforce the alcohol beverage laws, practice responsible drinking and good citizenship.

It is good to know that someone is looking out for the person who has reached their alcoholic limit, even though—in some cases—the individual might not admit it. That's the SafeRide Program in action.

PLAHN CANVAS PRODUCTS

Since 1959

608-754-7011

PROTECT YOUR INVESTMENT...



COVER YOUR BOAT!

- Custom-made Boat Covers
 - Pontoon Mooring Covers, Canopies, Furniture Covers
- Ask about our Easy Zippered Pontoon Covers!
- Canvas Repair Service

Visit our Retail Store

752-1805

Army - Navy Surplus
Camping Supplies, Clothing & Accessories

Complete line of Canvas Specialties:
Bags, Packs, Soft-sided Luggage



Plahn's Army Navy

Your Surplus Headquarters Since 1959

www.plahnsarmynavy.com

2 Stores Under One Roof

500 N. Parker Dr., Janesville, WI 53545

**CATERING
LARGE
EVENTS**



FIESTA GARIBALDI

The Way Mexican Should Be!

MEXICAN RESTAURANT & BAR

- **Fresh Squeezed Orange Juice**
- **Full Bar • Free WiFi**
- **Outdoor Patio**



**310 Milwaukee Street, Johnson Creek, WI
920-699-8989 • fax 920-699-89088
fiestagaribaldiwest@gmail.com**