



**GARDENIA BEACH
HOTEL
SUSTAINABILITY MANUAL**

2025

THE REPUBLIC OF TURKIYE



FOUNDATION OF THE REPUBLIC OF TURKIYE

After the National War of Independence, which started on May 19, 1919, the First Grand National Assembly of Turkey convened on April 23, 1920, under the leadership of Mustafa Kemal Atatürk. With the adoption of the first constitution on January 20, 1921, "Sovereignty belongs to the nation unconditionally.

"Executive and legislative authority is concentrated in the Turkish Grand National Assembly on behalf of the Turkish nation. "On the first anniversary of the opening of the Turkish Grand National Assembly on April 23, 1921, April 23 was declared a national holiday with Law No. 112. The Republic was declared on October 29, 1923.

MUSTAFA KEMAL ATATÜRK

(1881-1938)



ATATÜRK, FOUNDER AND FIRST PRESIDENT OF THE REPUBLIC OF TURKIYE

He was born in Thessaloniki in 1881. His mother is Zübeyde Hanım and his father is Ali Rıza Efendi. He went to the Mahalle School, Şemsi Efendi School, Thessaloniki Civil Junior High School, Thessaloniki Military Junior High School, Thessaloniki Military High School, the Military Academy and the Military Academy, respectively. While he was studying at the Military Middle School in 1893, "Kemal" was added to his name by his mathematics teacher and he took the name Mustafa Kemal. When the Ottoman Empire was defeated in World War I, the Armistice of Mudros was signed. Following the start of the occupation of the homeland in accordance with this agreement, Mustafa Kemal went to Samsun on May 19, 1919 and started the national struggle. Mustafa Kemal was elected as the President of the Parliament and Government with the opening of the Turkish Grand National Assembly on 23 April 1920. After winning the Battle of Sakarya, he was honored with the title of Gazi and the rank of Marshal. Mustafa Kemal became the first President of the Republic of Turkey with the proclamation of the republic on October 29, 1923

GARDENIA BEACH HOTEL



Our goal is to provide the best possible service of the highest quality, together with all our team members, in compliance with legal requirements, and thus maintain the highest level of guest satisfaction. In this context, we would like to share the progress we have made in terms of sustainability with our management, team members, guests, suppliers, and all other partners in order to raise awareness of sustainability and achieve our set goals.

We develop our goals in light of today's changing conditions, with an awareness of the responsibility that sustainable tourism entails, and in accordance with the principle of continuous improvement. We continue our work to use existing resources efficiently, protect them, and preserve them for future generations.

In this context, we implement the principles of sustainable tourism by raising awareness of sustainability,

- supporting local development and the economy,
- promoting local employment without discrimination based on gender, ethnic origin, or membership in disadvantaged groups,
- implementing social projects both within the resort and together with the local population,
- raising awareness of our natural, cultural, and historical values,
- maintaining the highest level of guest satisfaction,
- using our resources efficiently and implementing measures to reduce our environmental impact.

We are aware of our responsibility towards nature. For this reason, we implement various measures at our resort in line with the principles of sustainable tourism.

UNSERE QUALITÄTSPOLITIK UND NACHHALTIGKEITSPOLITIK

By prioritizing social, environmental, and cultural values and acting within the framework of local and international laws and standards, we provide the necessary resources to implement pioneering structures in the tourism sector.

By creating a corporate culture based on quality, food and water safety, occupational health and safety, information security, infectious disease management, and sustainable tourism, we implement our integrated management system, which we have developed, documented, and continuously refined.

LEGAL COMPLIANCE:

We are committed to complying with all applicable legal regulations, national and international standards, and all other relevant compliance requirements related to our activities.

CONTINUOUS IMPROVEMENT AND ANALYSIS:

We are committed to continuous improvement by focusing on the satisfaction of all stakeholders, evaluating our internal and external issues as well as the needs and expectations of relevant parties, and analyzing potential risks and resulting opportunities at an early stage.

STAKEHOLDER ORIENTATION:

We identify objectives, risks, opportunities, and threats, create opportunities for our employees, guests, the local community, and all stakeholders to express their needs, wishes, suggestions, and complaints, and systematically monitor and measure the performance and effectiveness of our applications, taking into account the interests of all stakeholders.

EMPLOYEE PARTICIPATION:

We ensure that our employees—selected from the local community whenever possible—are strengthened in their awareness and skills through targeted training. We encourage their participation in all activities by providing motivation, incentives, and effective communication, and actively incorporating their suggestions.

OCCUPATIONAL HEALTH AND SAFETY:

We create a safe and healthy working and living environment for our employees, guests, and all stakeholders by planning measures to prevent accidents and occupational diseases and by building an organization that can respond quickly and effectively to emergencies.

FOOD AND WATER SAFETY:

To avoid health problems that can arise from food, water, or sources of infection, we plan preventive measures and implement an organization that can intervene quickly and effectively in an emergency – to protect our employees, guests, and all stakeholders.

INFORMATION SECURITY:

We are committed to protecting the confidentiality, integrity, and availability of information and to safeguarding the personal data of our employees, guests, and partners.

PROTECTION OF CHILDREN'S AND WOMEN'S RIGHTS:

We create an environment in our facilities where children – under the supervision of their parents – can feel free, safe, and comfortable, and can openly express their thoughts, wishes, and feelings.

We reject any actions that could endanger or restrict the mental or physical well-being or rights, especially of children, women, and people with reduced mobility, and we are committed to sharing this awareness with all employees and partners and taking action against such actions within the framework of legal regulations.

UNSERE QUALITÄTS- UND NACHHALTIGKEITSPOLITIK

ACCESSIBLE LIVING:

We are committed to taking all necessary precautions in our facilities to ensure that our guests and employees with limited mobility have safe, comfortable, and unrestricted access to all areas and services.

FAIR WORK AND GENDER EQUALITY:

We create a working and living environment that supports the balance of work and private life, protects women's rights, does not permit gender-based discrimination, and promotes equal treatment for all in order to strengthen women's participation in the workforce.

PROTECTION OF THE ENVIRONMENT AND NATURAL HABITATS:

When planning our investments and activities, we consider the impact on protected sensitive areas, historical heritage, and the natural and cultural environment.

We ensure the economical and efficient use of natural resources and, in our landscaping, prefer plants, materials, and methods that are appropriate to the region, surroundings, and ecosystem.

We follow the principle of "consume as much energy as we produce" and analyze our energy and resource consumption by investing and planning to reduce our carbon footprint – through the use of efficient equipment and methods that reflect the latest technology.

We ensure that no prohibited or endangered animal or plant species are used or kept in our facilities. Any such species are immediately reported to the relevant authorities.

PROTECTION OF SOCIAL AND CULTURAL VALUES:

We contribute to the preservation, further development, and visibility of historically, archaeologically, culturally, and spiritually significant local/regional foods, sites, and traditions in our country and region.

PROCUREMENT:

When sourcing all products and materials, we evaluate their quality and suitability together with the users, analyze their suitability for our activities, and monitor our suppliers. In doing so, we ensure that harmful impacts on the environment, nature, ecosystems, and human and animal health are minimized as much as possible.

We prefer products with less packaging and a low carbon footprint, and – within the framework of legal requirements – we source from local producers or fair-trade suppliers.

ZERO WASTE:

As part of the "Zero Waste" project in our facilities, we educate and raise awareness about proper waste separation and disposal.

We prioritize recyclable materials, ensure effective waste separation, and ensure that non-recyclable materials are disposed of by authorized bodies.

We minimize the use of single-use materials to reduce waste.

We are committed to all of these principles..

MAP



Please scan the QR code to view bus routes and timetables in Alanya.

From our hotel:

- **Cable car 30.9 km.**
- **Damlataş Cave 33 km.**
- **Alanya Red Tower 35 km**
- **Alanya Castle 37 km**
- **Dim River 54 km**
- **Sapadere Gorge 79 km**
- **Manavgat Waterfall 30 km**
- **Side Antique City 33 km**
- **Aspendos Antique Theater 61 km**
- **Antalya Old Town 104 km**

ALANYA CABLE CAR



ECOLOGICAL TRANSPORT

The Alanya cable car offers an "eco-friendly transportation solution" with its technology elegantly integrated into nature.

At every stage – from planning and construction to operation – great importance is placed on protecting the environment and conserving natural resources.

It combines all the advantages of ecological transportation.

The Alanya cable car system is designed to operate reliably and uninterruptedly in all weather conditions – rain, wind, or high temperatures.

DAMLATAŞ CAVE



DAMLATAŞ CAVE

Damlataş Cave was discovered in 1948 when stone was needed to open a quarry for the construction of a harbor. The cave is located on the west coast of the historic peninsula. The cave's stalactites and stalagmites, located in the crystalline limestone, have formed over 15,000 years. The cave was named "Damlataş" (stalactite) because water droplets continue to drip from the stalactites.

Damlataş Cave is a favorite among domestic and international tourists. In addition to its mesmerizing beauty, it is also known for its air, which is beneficial for asthma sufferers. The air in the cave remains unchanged in summer and winter; the temperature is 22 degrees Celsius, the humidity is 95%, and the atmospheric pressure is a constant 760 mm.

The cave's air contains 71% nitrogen, 20.5% oxygen, 0.25% carbon dioxide, and a certain amount of radioactivity and ions.

There is a fee to enter the cave. There is a small bazaar nearby, and a beach in front of the cave.

ALANYA RED TOWER



RED TOWER

The Kızıl Kule, a unique example of 13th-century medieval defensive structures in the Mediterranean, was built by the Seljuk Sultan Alaaddin Keykubat I. Its purpose was to protect the harbor, shipyard, and castle of Alanya from attacks from the sea. The construction was entrusted to the Aleppo-born master builder Ebu Ali Reha el Kettani.

On the northern outer wall of the building, at a height of 10 meters, is a four-line inscription with the dedication "Thanks be to God." Below it is an inscription in honor of Alaaddin Keykubat, which indicates the construction date as April 1226. Another inscription is located on the southern wall.

The Kızıl Kule has an octagonal floor plan and—in contrast to its simple exterior appearance—has a complex interior structure. The tower consists of five floors: ground floor, first floor, mezzanine, open floor, and open terrace.

It is easily accessible by Alanya minibuses (dolmus)

ALANYA CASTLE



ALANYA CASTLE

Alanya Castle is one of the landmarks of the city of Alanya, a district of Antalya Province. It is located on a peninsula approximately 250 meters above sea level. The fortress walls have a total length of 6.5 kilometers. In ancient times, the settlement of Alanya was known as "Kandeleri," and the fortress was originally built during the Hellenistic period. However, the historical structure visible today dates back to the 13th century and is the work of the Seljuks. The castle was built in 1221 by the Seljuk Sultan Alaeddin Keykubat I, who conquered and rebuilt the city.

The castle is easily accessible from the hotel by bus, which departs from the stops on the main road in front of the hotel.

DIM RIVER



DIM RIVER

The Dimçay River originates in the Taurus Mountains and meanders for approximately 60 kilometers. Its waters are cool year-round and, especially in summer, offer an ideal refuge from the oppressive heat of the Mediterranean. Numerous restaurants and tea gardens are located along the parallel road. These restaurants continue beyond the Regulator, about 7–8 kilometers from the main road. A special feature of many of these restaurants and picnic areas is that the tables are set up directly in the river. The upper sections of the Dimçay River are also used for rafting activities.

From the hotel, you can easily reach Dimçay by bus, which departs from the stops on the main road in front of the hotel. At the final stop, you can change to the buses marked "Dimçayı," which will take you directly to your destination.

SAPADERE CANYON



SAPADERE CANYON

Located between the wild Taurus Mountains, the Sapadere Gorge is surrounded on three sides by high mountains and stretches for 750 meters. It lies 400 meters above sea level and is on average 10–15 meters wide. It is surrounded by 150–200 meter high karst cliffs. Because the water springs directly from the rocks of the Taurus Mountains, it is very cold and particularly oxygen-rich.

The gorge was opened to visitors in 2008. To ensure a comfortable walk, wooden walkways were built on a steel structure. Railings and wire fences have been installed in some areas for safety reasons. The walk begins with a gentle slope at the entrance to the gorge and is made even more interesting and varied by short climbs of 10–15 degrees.

From the hotel, you can take minibuses ("dolmus"), which depart from the main road in front of the hotel, to Alanya city center. From there, the journey can only be continued by taxi, as public transport does not serve this region.

SIDE ANTIQUE TOWN



SIDE ANTIQUE TOWN

The ancient city of Side is one of the most important settlements in history and was founded in the 7th century BC. It is located in the historical region of Pamphylia. Side initially belonged to the region's first empire – the Kingdom of Lydia – and remained under its rule for a long time. Later, the city fell to the Persian Empire. When Alexander the Great conquered the region, Side became the property of the Macedonian king.

From the hotel, you can take buses towards Manavgat, which depart from the main road in front of the hotel. In Manavgat town center, you can change to a dolmuş to Side, which will take you directly to the ancient city.

ASPENDOS ANTIQUE THEATER



ASPENDOS ANTIQUE TOWN

Aspendos is famous for having the best-preserved Roman theater not only in Anatolia, but in the entire Mediterranean. The ancient city was founded on a high plateau near the Köprüçay River (ancient Eurymedon), one of the largest rivers in the region. The city owes its development and access to the Mediterranean to this river and the fertile soils in its surroundings. Today, the impressive theater and the ancient aqueducts are among the most visited monuments in Aspendos.

From the hotel, you can reach Aspendos by taking the bus towards Antalya on the main road and getting off in Serik. From there, minibuses go directly to Aspendos.

MANAVGAT WATERFALL



MANAVGAT WATERFALL

The Manavgat Waterfall is located in the town of Manavgat in the Antalya province, on the river of the same name. Although it cascades from a low height, it impresses with its wide waterfront and strong current.

From your hotel, you can reach the waterfall by taking a bus to Antalya on the main road and getting off in Manavgat.

ANTALYA OLD TOWN



ANTALYA OLD TOWN

Antalya's Kaleiçi is protected by two thick, horseshoe-shaped walls. One of these city walls lies on the seashore of the bay, the other on the landward side. There are also walls separating different parts of the city, and towers are located on the outer walls approximately every fifty paces. The narrow streets within the walls extend uphill from the harbor along the city walls.

Important historical buildings within the city walls include the Yivli Minare, the Keyhüsrev Madrasa, the Karatay Madrasa, the İskele Mosque, and the Tekeli Mahmut Paşa Mosque.

From the hotel, you can reach the Old Town by taking a bus to Antalya on the main road and then transferring to municipal buses that go directly to Kaleiçi.

HADRIAN'S GATE



HADRIAN'S GATE

It is one of the best-preserved historical monuments in Antalya. The Roman structure was built in 130 AD by order of the Roman Emperor Hadrian. Over time, the city wall covered the outer part of the gate, and the gate was not used for many years. Perhaps this is one reason why the structure has survived without collapsing to this day. The gate was uncovered when the ruins of the walls were demolished. It is considered the most beautiful gate in Pamphylia. It has three dome-shaped openings in its upper part. Except for the columns, it is made entirely of white marble. Its carvings and reliefs are beautiful. You can board Antalya's buses from the stops on the main road in front of our hotel and reach the castle using the city buses.

HOW TO GET THERE?

ALANYA PORT – RED TOWER (KIZILKULE)

You can take the city buses that pass in front of our hotel and get off in the city center. Alternatively, you can take the private shuttle service from the hotel to the center.

ALANYA CASTLE

You can take the city buses that pass in front of our hotel and get off in the city center. From there, you can reach the castle by bus or cable car from Damlatas. Alternatively, you can take the private shuttle service from the hotel to the center.

MANAVGAT – SIDE

You can reach the center of Manavgat and Side in approximately 26 minutes by taking the buses that run along the main road in front of our hotel or by taking the Antalya buses.

ANTALYA

You can reach the center of Antalya in approximately 1.5 hours by taking the Antalya buses that run along the main road in front of our hotel.

AIRPORT

Our guests can reach Antalya Airport in approximately 1.5 hours with their travel agency's transfer vehicles.

Our guests can reach Gazipaşa Airport in approximately 1.5 hours with their travel agency's transfer vehicles.

ALANYUM

The city buses that pass in front of our hotel will take you to the city center. From there, you can reach the Alanyum Shopping Center with additional city buses.

In residential areas, public transport is provided by controlled minibuses for a fee or by city buses that can be used with the city card.

Our guests can also take a taxi from the nearby taxi stands if needed.

WEEKLY MARKETS

The Tuesday Market takes place every Tuesday in Okurcalar.

This market, just 10 minutes from the hotel, offers fresh fruit, vegetables, and textile stalls weekly.



WEEKLY MARKETS IN ALANYA

For more information about other weekly markets in Alanya, scan the QR code.

CULTURAL INFORMATION



TURKISH TEA

A type of black tea is grown on the eastern Black Sea coast of Turkey. This type of tea is also popularly known as Turkish tea. It is brewed from roasted black tea powder and served in characteristic small glasses called "Ince Belli."

CULTURAL INFORMATION



TURKISH COFFEE

Turkish coffee is one of the oldest coffee preparation and brewing methods in the Ottoman Empire and occupies an important place in Turkish culture. With its unique taste, foam, aroma, and serving style, it possesses a unique identity and tradition. It is the only type of coffee served with ground coffee.

In 2013, Turkish coffee culture and tradition were inscribed on the UNESCO List of Intangible Cultural Heritage of Humanity in our country's name.

CULTURAL INFORMATION



AYRAN

A drink made by adding water to yogurt. It is one of the most common beverages in Turkish cuisine.

The Göktürks, who ruled between 552 and 745 AD, added water to sour yogurt to reduce its acidity. This is how Ayran came about by chance.

The word Ayran was first defined in the work "Divan-ı Lügat-it Türk" as "a drink made from milk."

CULTURAL INFORMATION

❖ GÖZLEME



GÖZLEME

Gözleme is a Turkish appetizer pastry made from thinly rolled yufa with various fillings and baked on a baking sheet over a wood fire.

"Közmen," which in the Seljuk period meant "bread baked in embers," was one of the first terms for gözleme. Over time, with the development of the spoken language and due to changing regional dialects, the term evolved and became known as gözleme.

CULTURAL INFORMATION

❖ TÜRK HAMAMI



TURKISH BATH

A bathing culture has existed in Anatolia since ancient times. During their time in Central Asia, the Turks brought their existing bathing traditions to Anatolia, where they migrated. They built their own traditions on the marble bathing culture of their predecessors. Over time, baths became places where very special days were celebrated. Even today, the bridal bath, the postpartum bath, the baby's forty-year-old bath, the votive bath, and the mourning bath for women, as well as the groom's bath, the circumcision bath, the soldier's bath, and the holiday bath for men, are common.

CULTURAL INFORMATION

❖ KARAGÖZ İLE HACİVAT



HACİVAT KARAGÖZ

Karagöz and Hacivat is a shadow play based on imitation and conversation, performed on a screen with two-dimensional representations. The Karagöz player is described as fictitious, imaginary. The changes in the conversations in the play are brought about by head movements.

It is not known for certain whether these two characters actually lived, and if so, where and how they lived. The stories are based on hearsay, because even if they did, they were probably not considered important enough to be included in history books during the period in question.

CULTURE AND NATURAL HERITAGE



SEA TURTLE

The loggerhead turtle (*Caretta caretta*) only comes ashore to lay its eggs and is considered endangered. The loggerhead turtle (*Caretta caretta*) and the green sea turtle (*Chelonia mydas*) lay their eggs on the Turkish Mediterranean coast. Studies conducted in the Mediterranean region show that Turkey and Greece are the most important nesting areas for the loggerhead turtle.

ENDEMIC ANIMAL SPECIES



Caretta Caretta



Pantera pardus tuttiana



Ovis orientalis anatolica



Citellus citellus



Vipera kaznakovi



Felis caraca

CULTURE AND NATURAL HERITAGE



Sand Lily (*Pancratium maritimum*)

The sand lily is a perennial, bulbous plant species in the Amaryllis family and grows primarily in Mediterranean sand dunes. Its native habitat is the Mediterranean region. It is an endemic plant species. In our country, those who damage this plant are prosecuted.

Sand lilies are mostly found in areas near the sea. They do not lose their leaves, which resemble long spears protruding from the ground and can reach a length of up to 40 cm, in winter. The flowering period is between August and October.

ENDEMIC PLANT SPECIES



Pancratium maritimum



Himantoglossum Montis-tauri



Colchicum Baytopiorum



Lathyrus Phalitanus



Orobanche Sideana



Alkanra Macrophylla

INFORMATION ON VISITING LOCAL, HISTORICAL, ARCHAEOLOGICAL, CULTURAL, AND SPIRITUAL SITES

- Please do not participate in tourist activities that involve animal cruelty.
- Please behave in an environmentally conscious manner in excursion and sightseeing areas.
- The sale of cigarettes and alcoholic beverages to persons under 18 is prohibited in our country.
- Except on the beach, swimwear is not permitted in public areas; appropriate clothing is required.
- Do not photograph or touch children without parental permission.
- Shoes must be removed before entering holy sites such as mosques; women should cover their hair with a scarf.

FÜR UNSERE UMWELT



Dear Guests,

Choosing environmentally friendly products such as spray, deodorant, perfume, sunscreen, and insect repellent for your personal care is one of the best investments you can make in a sustainable environment.

If a sunscreen contains any of the following ingredients, please choose a more environmentally friendly alternative that is safe for marine life:

Oxybenzone, Benzophenone-1, Benzophenone-8, OD-PABA, 4-Methylbenzylidene Camphor, 3-Benzylidene Camphor, Nano-Titanium Dioxide, Nano-Zinc Oxide, Octinoxate, Octocrylene.

Benzophenone-1, Benzophenone-8, OD-PABA, 4-Methylbenzylidene Camphor, 3-Benzylidene Camphor, Nano-Titanium Dioxide, Nano-Zinc Oxide, Octinoxate, Octocrylene.

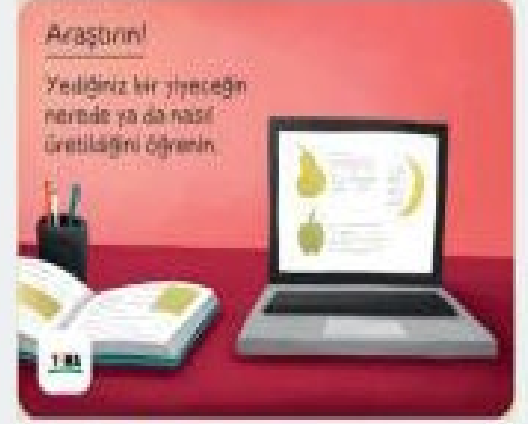
All the special delicacies of our country, especially from Alanya, are offered to our guests in our buffet. In addition, our hotel hosts a weekly 'Turkish Evening,' where our guests are introduced to Turkish culinary culture.



ÇEVREMİZİ KORUMAK İÇİN To Protect Our Environment



Consume less electricity!
Turn off and unplug unnecessary working devices.



Research it!
Find out where and how a food you eat is produced.



Change your habits!
Use cloth bags instead of Plastic bags.



Notice them!
Put a bowl of water outside for street animals.



Less water Consumption
Do not leave the water on all the time while brushing your teeth and washing your hands.



Observe it!
Observe your disposables and use them less.

ÇEVREMİZİ KORUMAK İÇİN To Protect Our Environment

Yenileyin!

Kırılmış ya da bozulmuş eşyalarınızın yerine yenilerini almadan önce onları tamir etmeye çalışın.



TMM

Refresh it!

Before you buy a new one for your broken or damaged items, try to fix them.

Kullanmayın!

Tek kullanımlık plastik pipetleri kullanmayın.



TMM

Do not use!

Do not use disposable plastic straws.

Geri Dönüştürün!

Ablıklarınızı uygun geri dönüşüm kutularına atın.



TMM

Recycle it!

Dispose of your waste in appropriate recycling bins.

Doğaya Saygı Düyün!

Daha az kâğıt kullanın. Kâğıdın iki tarafını da kullanın.



TMM

Respect nature!

use less paper. Use both sides of the paper.

Fidan Dikini!

Bir ağaç tohumunu çimlendirin ve büyüttükünüz fidanı toprağa dikin.



TMM

Plant saplings !

germinate a tree seed and plant the seedling you have grown into the ground.

Paylaşın!

Kullanmadığımız giysileri giysi toplama kutularına bırakın ya da başkasıyla paylaşın.



TMM

Share it!

leave unused clothes in the clothes collection boxes or share them with others.

HUMAN RESOURCES DEPARTMENT

YÖNETİM



%83.3

%16.7

ÇALIŞAN



%75

%25

STAJYER

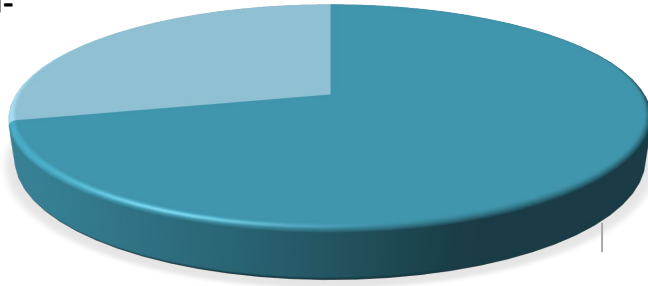


25

75

EMPLOYEE COUNCILS

PROPORTION OF NON-
LOCAL EMPLOYEES
44%



PROPORTION
OF LOCAL
EMPLOYEES
56%

ILLITERATE

%1,16

ELEMENTARY SCHOOL

%2.47

HIGH SCHOOL

%43.41

COLLEGE

%12.64

BENEFITS OFFERED TO EMPLOYEES



Housing options:

Employees are assigned company apartments. The apartments provide amenities that can be used to meet personal needs.

Healthcare:

Our employees can receive medical care at the hospital that partners with our hotel.



Meal options:

Our employees are served three meals a day in the staff cafeteria.



Laundry service:

All of our employees' uniforms are laundered in the hotel. Employees staying in the company apartments can use the washing machine provided there.

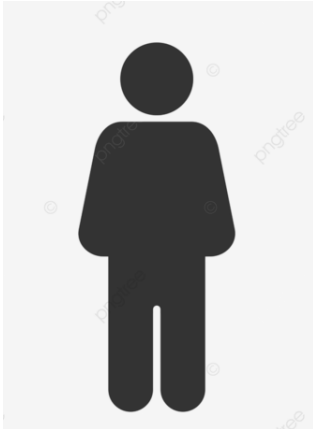
Shuttle service:

Shuttle buses to Alanya, Manavgat, and the staff accommodation are available at certain times to transport our employees.



Tailoring Service:

All of our employees' uniforms and work-related clothing are repaired free of charge by our in-house tailor.



Employee of the Month Program:

This program includes all permanent employees below the department manager level.

To increase motivation, an ****Employee of the Month**** is selected each month and rewarded with additional compensation.

Wedding Congratulations:

All our employees will receive a bonus upon presentation of a birth or marriage certificate.



ENERGY SAVING



Our facility uses 100% LED lighting.



Motion detectors are installed in all rooms, which automatically turn off the power if no movement is detected.



We prefer energy-efficient and environmentally friendly devices and technologies.

Motion-activated lighting systems are used in the common areas and staff areas.



The common areas are designed to make optimal use of daylight to save energy.

ENERGY SAVING



Outdoor lighting is controlled by timers.

Electronic energy cards are used in all rooms.



LED televisions are used in our rooms.
Minibars are positioned away from
heat sources to save energy.

In unoccupied rooms, the curtains remain
closed in summer and open in
winter to reduce the use of air conditioning.



All electronic devices are regularly
maintained and cleaned to minimize energy loss.

ENERGY SAVING



We have solar panels to harness solar energy.
Our water heating system achieves energy savings of 30%.

The seals on cold rooms, freezers, and refrigerators are regularly checked and replaced when worn to prevent energy loss.



Dishwashers, washing machines, and dryers are not operated until they are completely full.

Our energy consumption is recorded and monitored monthly and annually.

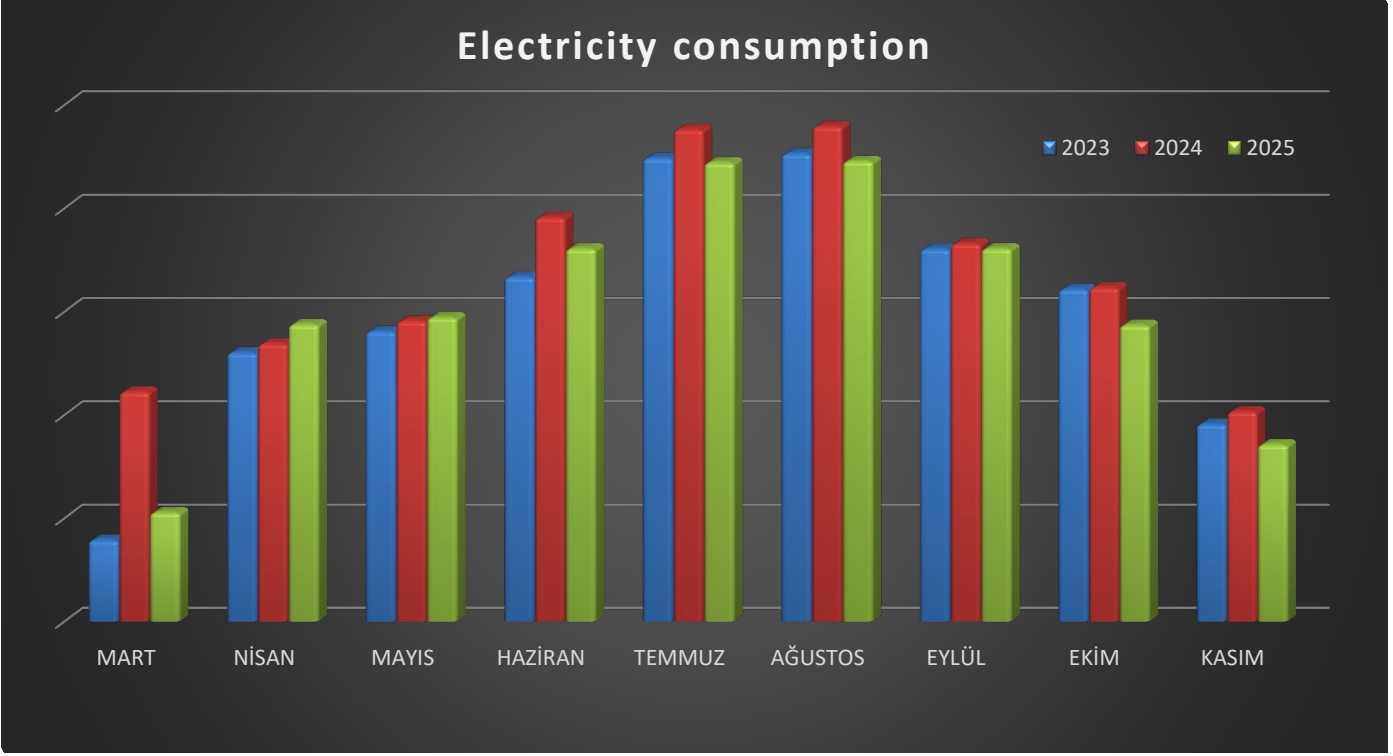


All electronic appliances are regularly serviced and cleaned to minimize energy loss.

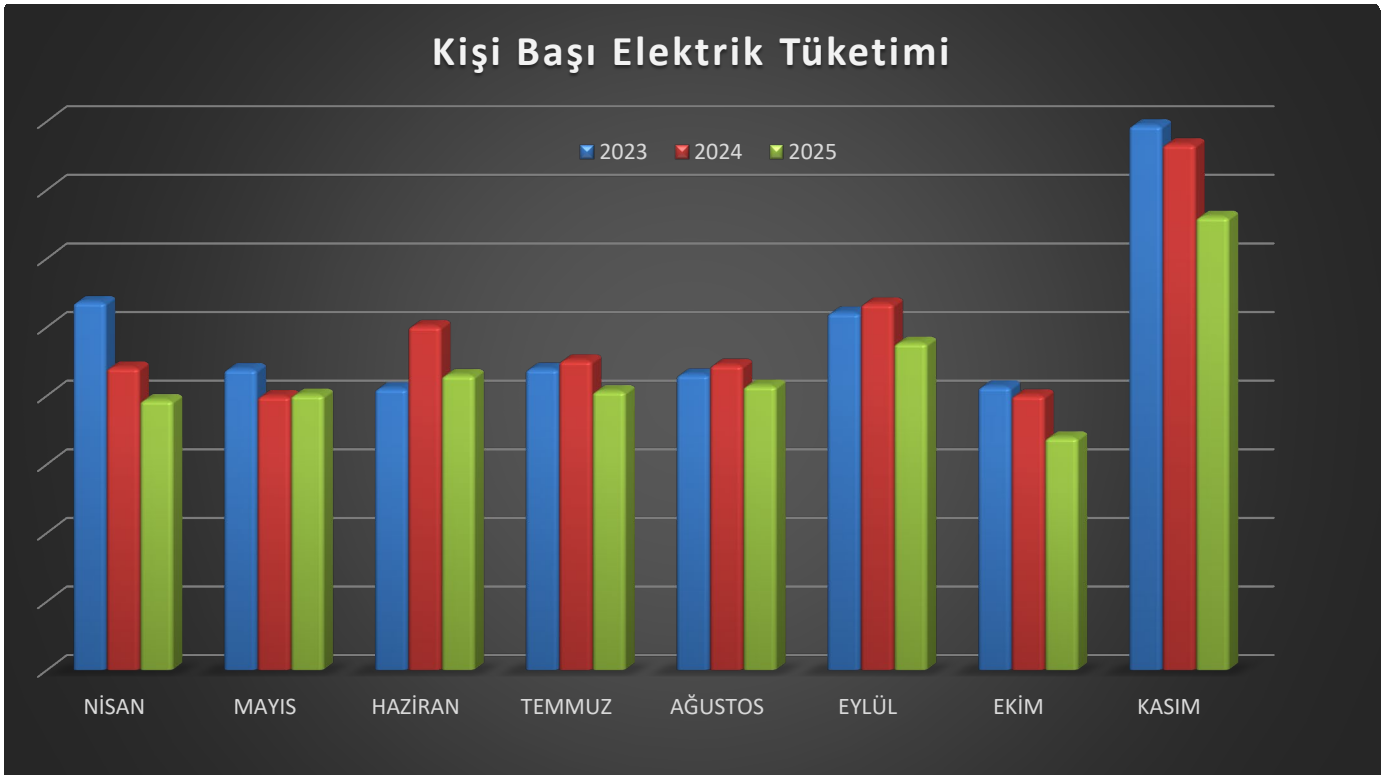


ENERGY SAVING

Electricity consumption 2023–2025 (in kWh)



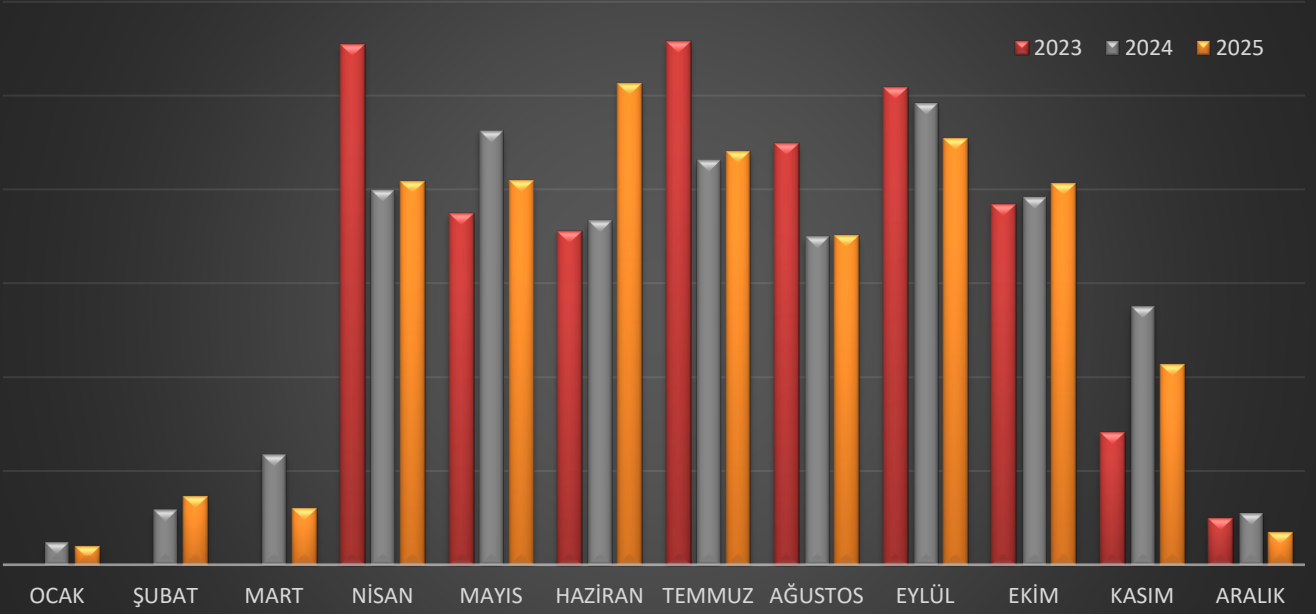
Electricity consumption per person 2023–2025 (in kWh)



ENERGY SAVING

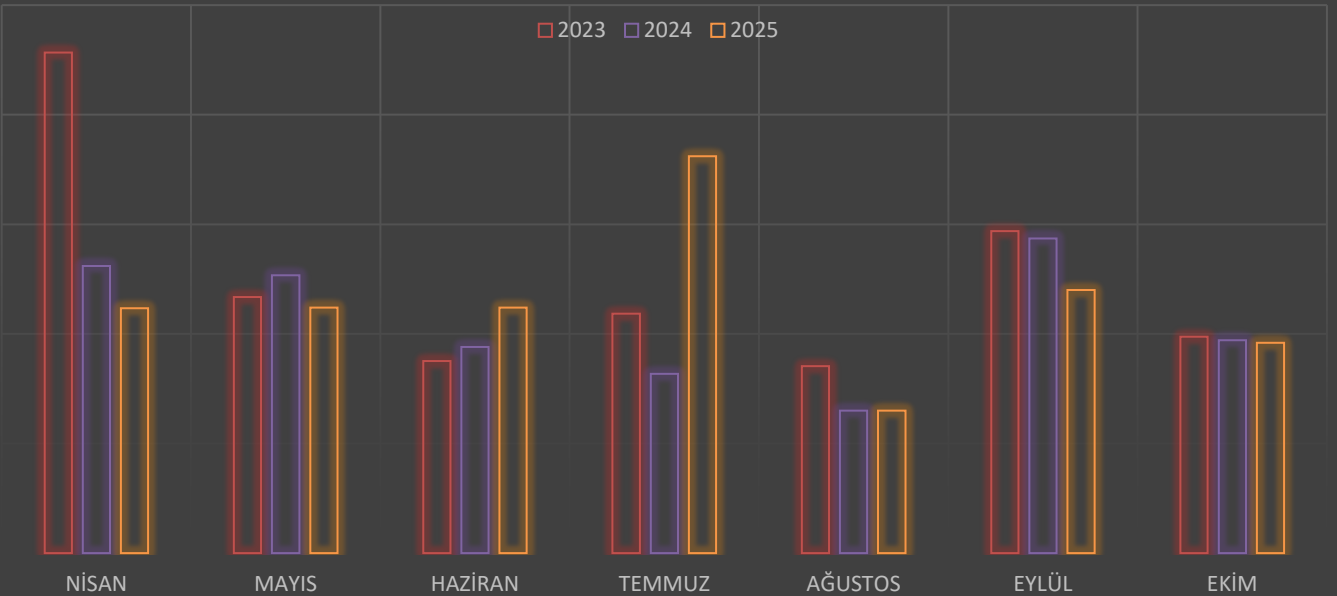
LPG consumption 2023–2025 (in m³)

LPG CONSUMPTION



LPG consumption per person 2023–2025 (in m³)

PER PERSON LPG CONSUMPTION



WATER SAVING



Water-saving aerators are installed in all rooms and common areas.



Sensor-operated urinals are installed in all restrooms.



Shower cubicles are preferred over bathtubs to save water.



Drip and spray irrigation systems are used to water our garden to prevent water loss.



WATER SAVING



Our employees are trained in water conservation.

Our guests are informed about our conservation measures.

Wastewater is connected to the sewer system in accordance with disposal regulations.



Touchless faucets and sensor-operated urinals are used in all common areas.

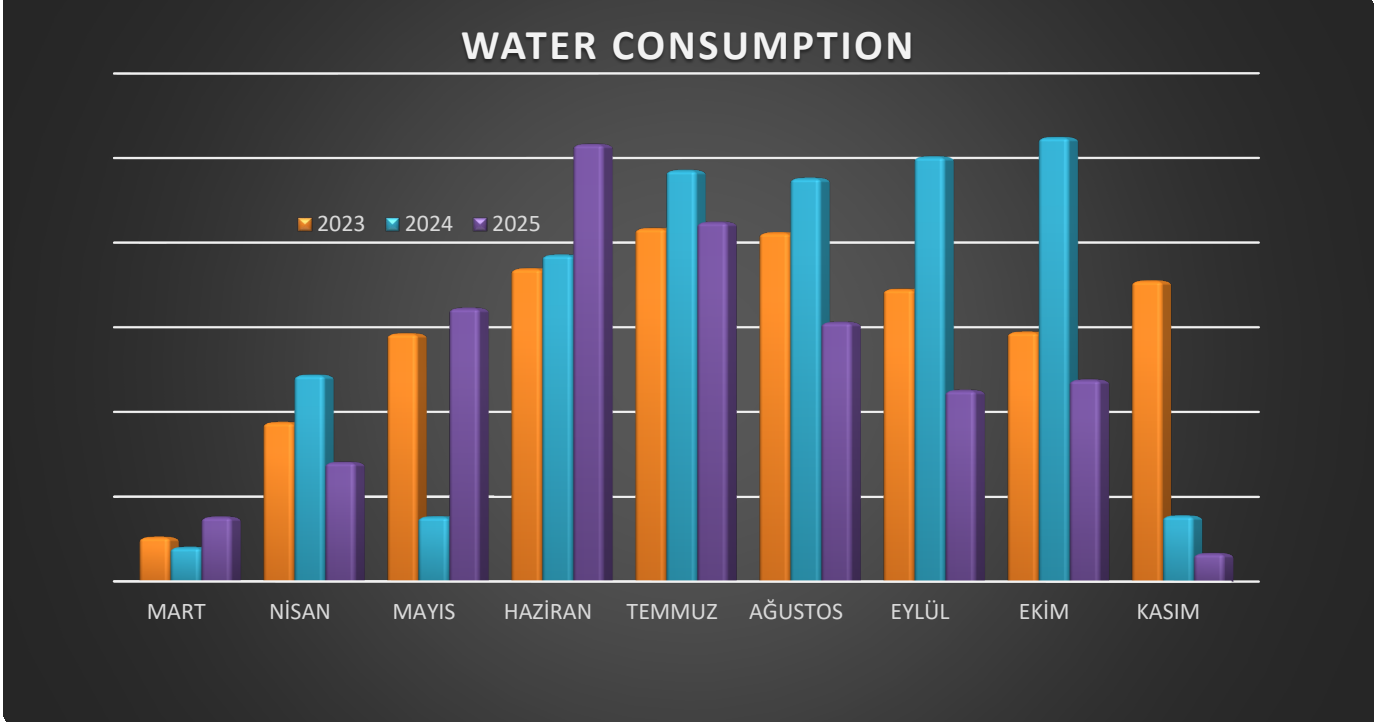
Floor-standing, timer-controlled systems are used in production areas.



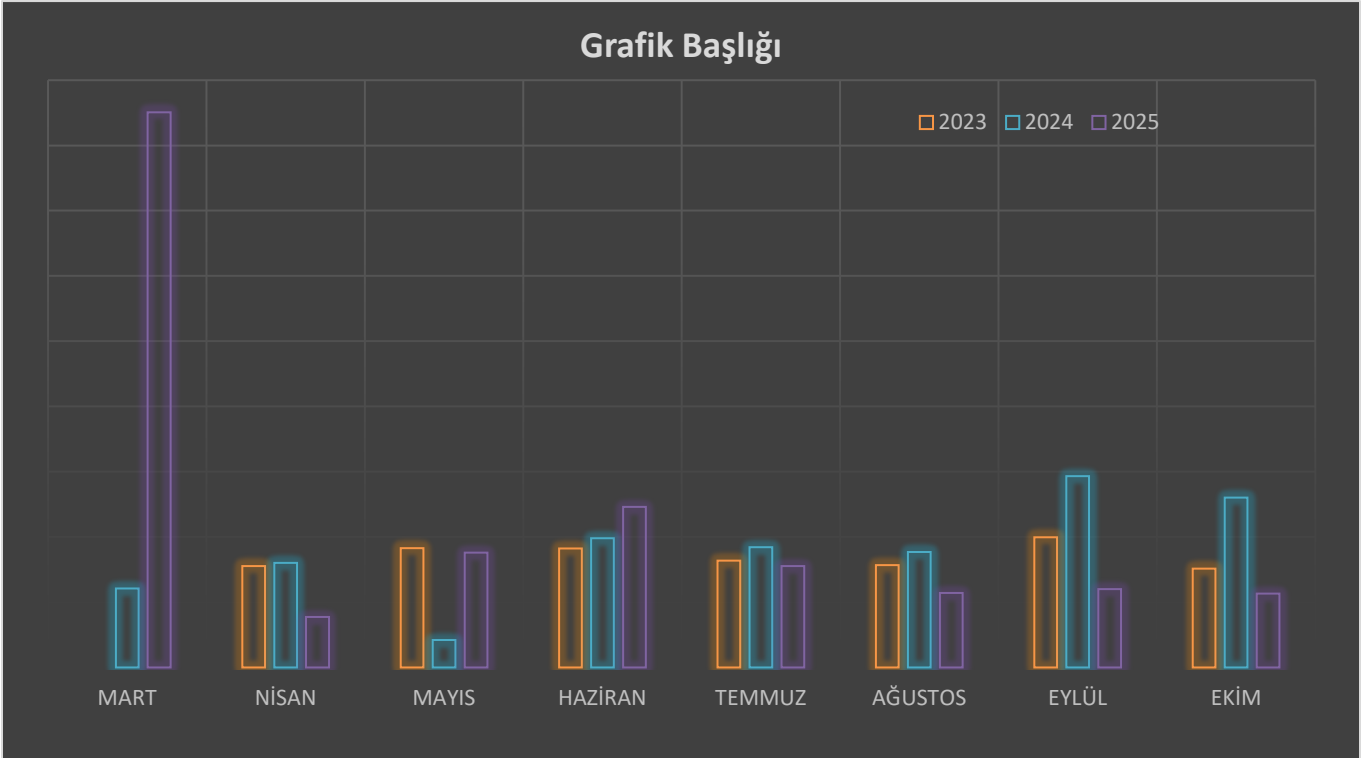
Our water consumption is recorded and monitored monthly and annually.

WATER SAVING

2023-2025 Water consumption in liters



2023-2025 PER PERSON WATER CONSUMPTION





We separate our waste at source.



By using reusable materials instead of disposable items, we protect our resources.



To reduce paper consumption, we conduct our correspondence by email and use double-sided paper.

We encourage our guests and employees to participate in recycling programs.



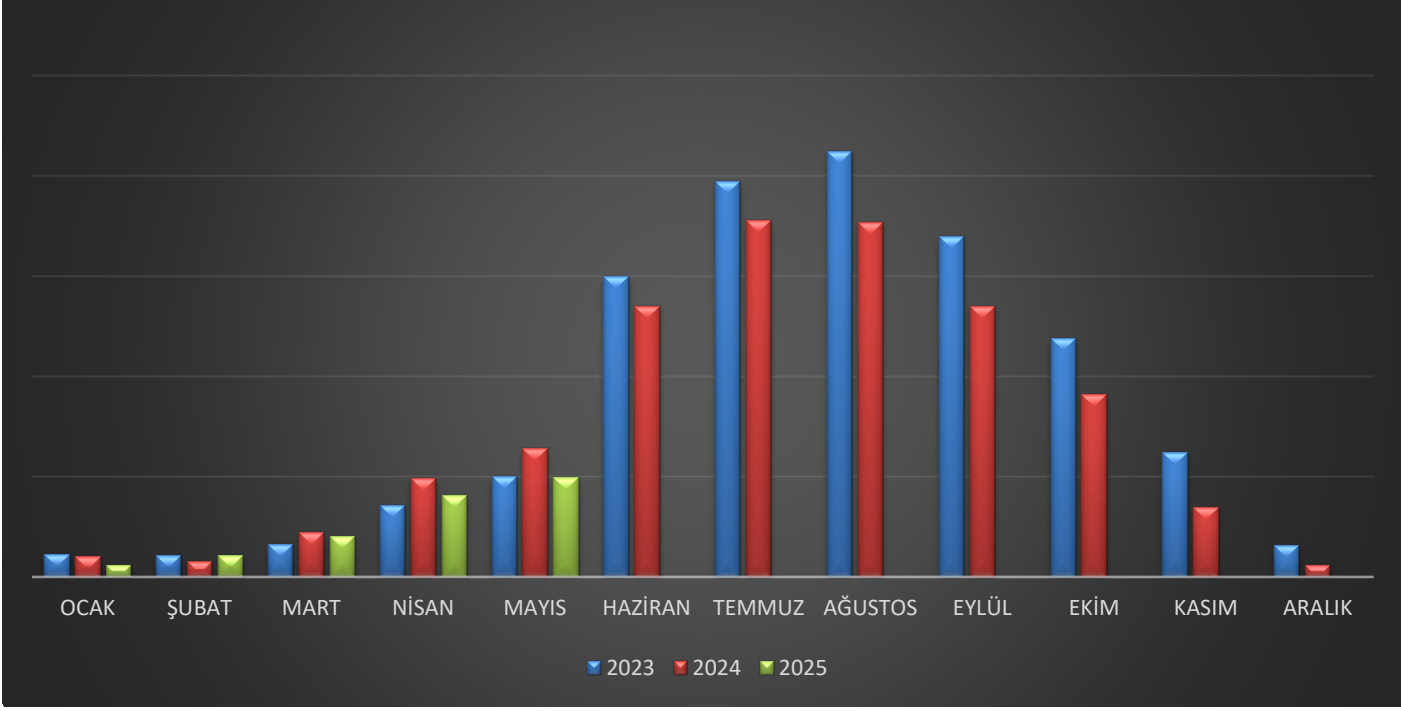
By purchasing products in bulk and concentrated form, we reduce packaging waste.



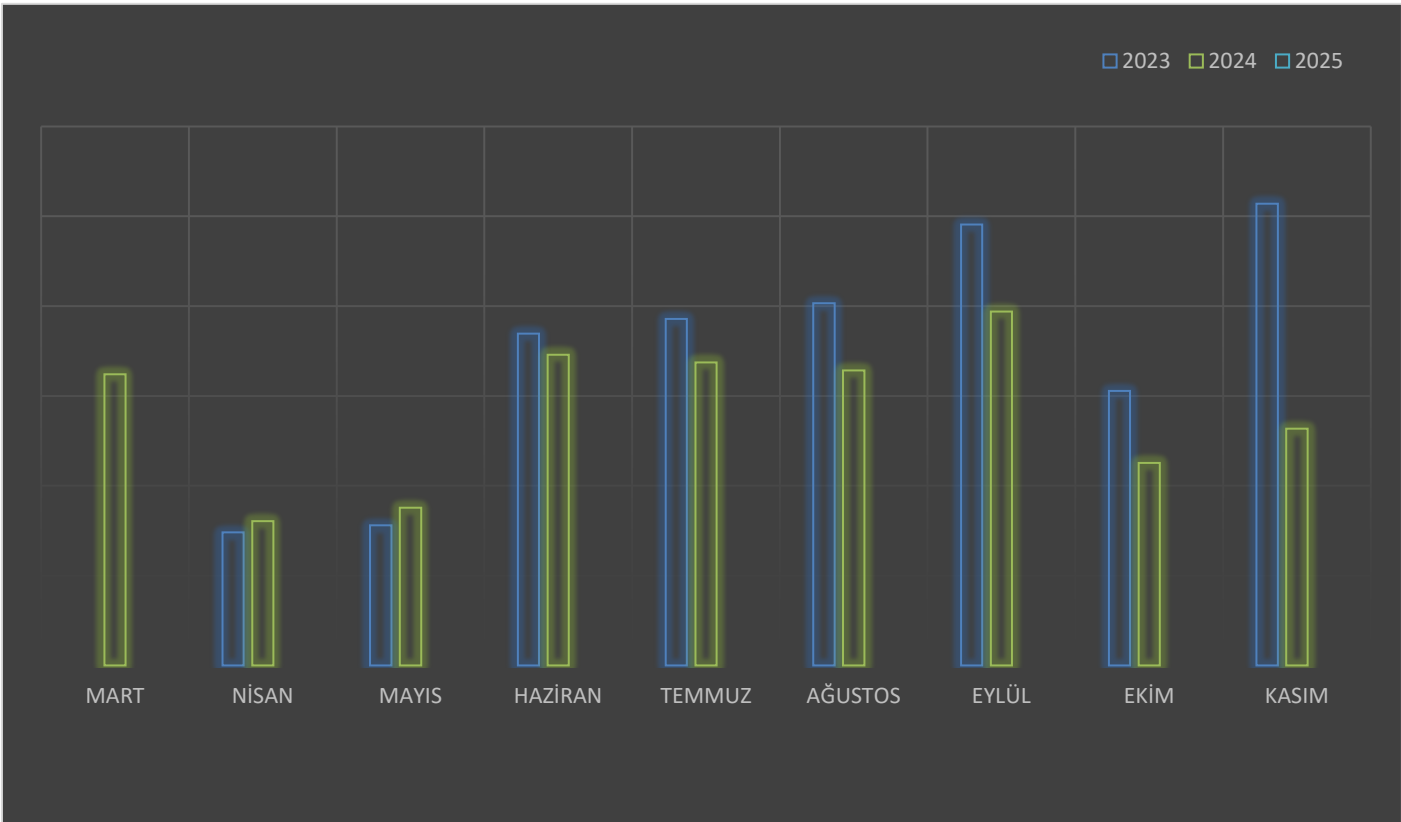


WASTE MANAGEMENT

Solid waste volume 2023–2025 (in kg)



Per capita waste volume 2023–2025



RECOVERY OF USED VEGETABLE OILS

We ensure the environmentally and health-friendly handling of used vegetable oils from their production to their disposal. For this purpose, we have two grease separators in our hotel. The used vegetable oils and residues generated during the production process are recovered through awareness-raising measures for our employees.

GOAL FOR PAPER CONSUMPTION REDUCTION

- We strive to digitalize our hotel processes to reduce paper consumption.
- Our office staff can complete many tasks and correspondence electronically via computers and the local network, except for work that requires a signature.
- Where possible, printing is done on double-sided paper.
- Hotel malfunctions are reported electronically to the relevant departments.
- In the offices, paper is not disposed of in the trash but in the recycling bins.

HANDLING CHEMICALS

- All employees receive regular training on the receipt, storage, and application of chemicals used in the facility.
- We ensure correct dosage, application area, and use of personal protective equipment.
- Current safety data sheets (MSDS) are provided and kept accessible in the relevant departments and areas.
- To reduce packaging waste, we primarily prefer concentrates.
- Contaminated packaging is handed over to licensed disposal companies in accordance with regulations.

SOCIAL RESPONSIBILITY

If you would like to help support our nature and endangered species, you can donate by scanning the QR codes.



OUR SOCIAL ASSISTANCE

As GARDENIA BEACH HOTEL;

To support the cultural heritage, we made in-kind donations to the excavation of the ancient city of Syedra.



T.C.
KÜLTÜR VE TURİZM BAKANLIĞI
SYEDRA KAZI BAŞKANLIĞI

Sayı: 2025- 13
Konu: Teşekkür Belgesi

10/06/2025

GARDENIA BEACH HOTEL'E

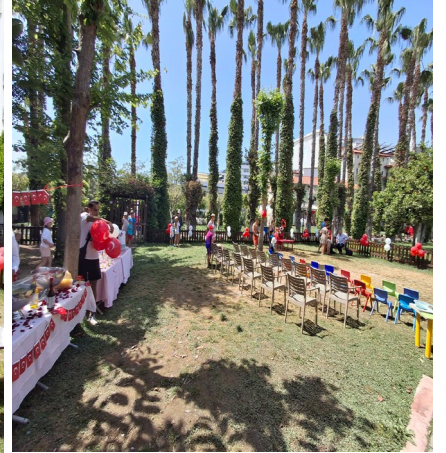
Syedra Antik Kenti, Antalya İli, Alanya İlçesi, Seki Mahallesi sınırlarında yer almaktadır. Alanya'nın 20 km doğusunda bulunan Syedra Antik Kentindeki kazı çalışmaları 2019 yılında başlamış ve 2025 yılında da devam etmektedir. Kazı çalışmalarının sağlıklı yürütülebilmesi için çeşitli kamu kurum ve kuruluşlarından destek alınmaktadır. 2025 sezonu çalışmalarında kullanılmak üzere aynı malzeme desteği veren Gardenia Beach Hotel'e, teşekkür ederiz.


Syedra Kazı Başkanı
Doç. Dr. H. Lütfü ERGÜLER

On religious holidays such as Eid al-Fitr (Sweet Food Festival) and Eid al-Adha (Kurban Bayramı), which are part of our cultural values, we set up a candy stand in the restaurant to showcase our cultural traditions.



On the occasion of National Sovereignty and Children's Day on April 23, we welcomed students to our institution. Our guests were introduced to the meaning and value of this important cultural holiday.



Copper items and woven carpets, reflecting Turkish culture, are exhibited in the Gözleme area.



We enable our local community to sell their handmade gift items



Handmade souvenirs crafted by local female entrepreneurs are displayed in the lobby area for our guests. They are also available for purchase.



SUPPORTING NATURAL LIFE

Every year, we protect the eggs laid on our beach by our Caretta Caretta friends.



We have set up an area in our hotel for the care and accommodation of our animal friends.



SUPPORTING NATURAL LIFE

On World Environment Day: Beach and environmental cleanup together with employees.



We have provided information about the plant species in our hotel.



We encourage our guests to use bicycles.

Rent a Bicycle

Fahrrad zur vermieten

Kiralık Bisiklet



Daily for

Taglich

Gunluk

5.-€

**For more information please Contact the Reception
Fur Mehr Info bitte an die Rezeption wenden.
Daha fazla bilgi, lutfen resepsiyon dan sorunuz.**

OUR MINI CLUB ACTIVITIES

On World Environment Day in June, an environmental and beach cleanup event was held.



Event for the protection and appreciation of nature.



Recycling-Aktion



Baumpflanzung



OUR TRAINING COURSES

FIRE SAFETY TRAINING



SUSTAINABLE ENVIRONMENTAL MEASURES AND ZERO-WASTE TRAINING



COMBATING CHILD ABUSE



PROPER USE OF CLEANING CHEMICALS



COMMUNICATION WITH DISADVANTAGED GROUPS



INTRODUCTION TO SUSTAINABLE AND SAFE TOURISM



SUSTAINABLE ENVIRONMENTAL PRACTICES AND ZERO WASTE



OUR SOCIAL ACTIVITIES

International Women's Day celebration on March 8 for our female employees



We value our female employees.



Mother's Day celebration for our female employees



CERTIFICATES AND AWARDS



TÜRKİYE CUMHURİYETİ
ÇEVRE, ŞEHİRCİLİK VE
İKLİM DEĞİŞİKLİĞİ BAKANLIĞI



SIFIR
ATIK

T.C. ANTALYA VALİLİĞİ ÇEVRE,ŞEHİRCİLİK VE İKLİM DEĞİŞİKLİĞİ İL MÜDÜRLÜĞÜ

SIFIR ATIK BELGESİ

(Temel Seviye)

Belge No: TS/7/B2/9/1083 Tarih: 29.11.2025

Adı: SİPAHIOĞLU OTELCİLİK VE TİC. A.Ş. / GARDENIA BEACH OTEL
Adresi: ANTALYA,OKURCALAR Mahallesi, İLİFOS CADDE, No: 22-, ALANYA,Türkiye
Vergi No:7710061050
Türü: Bina/Yerleşke

12/07/2019 tarihi ve 30829 sayılı Resmî Gazete’de yayımlanarak yürürlüğe giren Sıfır Atık Yönetmeliği’nce Sıfır Atık Yönetim Sistemi’ni kurarak Sıfır Atık Belgesi’ni almaya hak kazanmıştır.

İsmail ÖNTAŞ
Çevre, Şehircilik ve İklim Değişikliği İl Müdürü Vekili

Belge Son Geçerlilik Tarihi:
29.11.2030

**E-İMZALIDIR**

Doğrulama Kodu: 67D3E91A-B34DD-4750-AF38-C360E77C963F Doğrulama Adresi: <https://www.turkiye.gov.tr>

T.C.
THE REPUBLIC OF TURKEY
KÜLTÜR VE TURİZM BAKANLIĞI
THE MINISTRY OF CULTURE AND TOURISM

ÇEVREYE DUYARLI KONAKLAMA TESİSİ BELGESİ

THE CERTIFICATE OF ENVIRONMENTALLY FRIENDLY ACCOMMODATION ESTABLISHMENT

Adı : GARDENIA BEACH OTEL
Sınıfı ve Türü : 4 YILDIZLI OTEL
Adresi : KARABURUN MAH. 1022 SOK. NO:5 OKURCALAR-ALANYA/ANTALYA
Belge Sahibi : SİPAHIOĞLU OTEL VE TİC. A.Ş.
Tarih ve Sayı : 25.01.1995-6055


Kudret ARSLAN
Bakan a.
Genel Müdür V.

Y-1 SERİSİ No: 000804



TÜRKİYE
SUSTAINABLE
TOURISM



REPUBLIC OF TÜRKİYE
MINISTRY OF CULTURE AND TOURISM



GSTC



TGA
TURKISH TOURISM
PROMOTION AND
DEVELOPMENT AGENCY

TRB
TÜRKİYE TURİZM

GSTC Certification Code: HATBTR25082

Sustainable Tourism CERTIFICATION

This certification recommended by Türkiye Tourism Promotion and Development Agency is issued by TRB Uluslararası Belgeleştirme Teknik Kontrol Gözetim Hizmetleri Tic. Ltd. Şti.

TRB Uluslararası Belgeleştirme Teknik Kontrol Gözetim Hizmetleri Tic. Ltd. Şti. is accredited by GSTC and its accreditation coverage is published at www.gstc.org

GARDENIA BEACH OTEL

KARABURUN MAH. 1022 SOK. NO:5 OKURCALAR ALANYA/ANTALYA

Based on an audit according to the requirements stated in the Türkiye Sustainable Tourism Standard; Version 1.0, 19 May 2022; which is Recognized by GSTC and a signed contract, TRB Uluslararası Belgeleştirme Teknik Kontrol Gözetim Hizmetleri Tic. Ltd. Şti. herewith certifies that the facility listed above is found to be in compliance with Türkiye Sustainable Tourism Standard; Version 1.0 19 May 2022. This guarantees that the criteria for managing Sustainable Tourism certified tourism services have been met.

Certification Number	: TRB - 42977
Date of First Certification	: 25.06.2025
Issued On	: 25.06.2025
Date of Expiry	: 25.06.2026

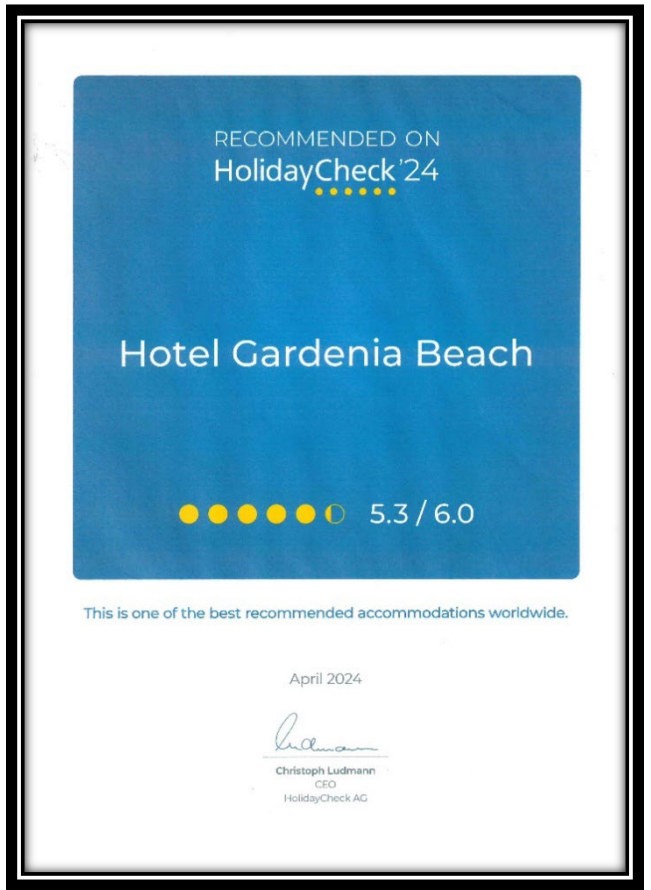
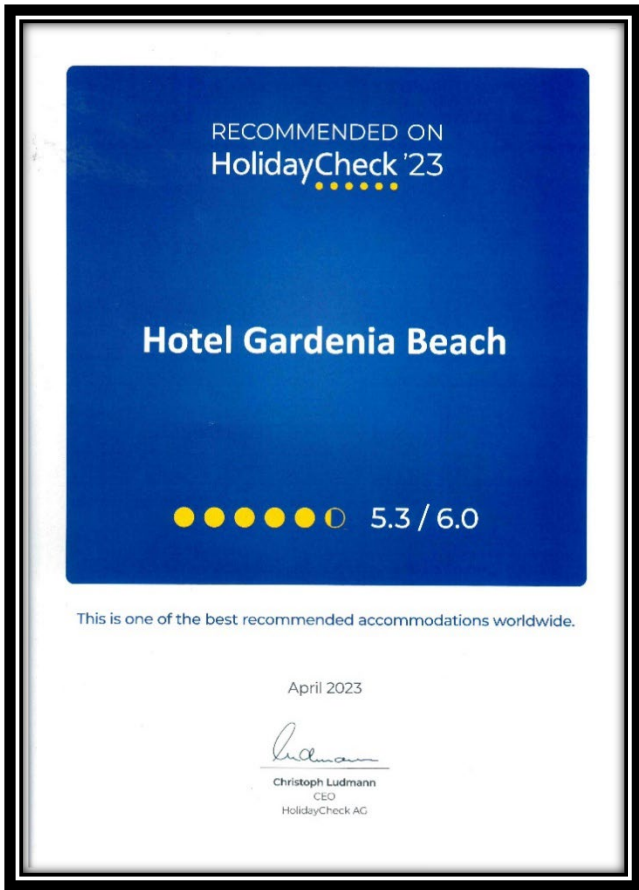

Savay Gökmen NAMLI

Facility Type
Accommodation Facility


Gardenia Beach



*The Sustainable Tourism Program was developed under the leadership of the Republic of Türkiye Ministry of Culture and Tourism.





AWARD 2023



Gardenia Beach

for outstanding customer feedback
and excellent partnership

Jiří Jelínek
CEO

Jolana Zavadilová
Member of Board of Directors



FISCHER



AWARD 2024



Gardenia Beach

for outstanding customer feedback and excellent partnership.

Jolana Zavadilová
Member of Board of Directors



FISCHER