

MONSTER HIRE

DRY HIRE . WET HIRE . SUB HIRE

Attachment & Machine Hire
Sales & Service

Attachments suitable for:

Skid steers, Excavators, Telehandlers, Backhoes, Loaders & Truck Cranes



-
- **Compact Tracked Loaders (94 Hp) - HIGH PRESSURE/ HIGHFLOW, Enhanced Flow & Standard Flow models**
 - **Skid Steer Loaders (84Hp)**
 - **Hydraulic Rear Rippers**
 - **Tip Truck**
 - **Pasture (Drag) Harrows**
 - **Auger Drives, Auger Bits, Auger Adapters, Auger Extensions**
 - **Cement Mixer Bowls & Bucket**
 - **Stick Rake/Dozer Blade Combo**
 - **Trencher Attachments**
 - **Spreader Bars**
 - **Slashers**
 - **Quick Rips**
 - **Tree Shear**
 - **4 - in - 1 Buckets - Toothed & Flat Edged**
 - **Grapples**
 - **Brushcutters**
 - **Fuel Cells**
 - **Rotary Tiller**
 - **Fork Attachments**
 - **Fork Slippers**
 - **Tilt Attach**
 - **Closed Face Bucket Brooms**
 - **Loading Ramps**
 - **Rotary Axe**
 - **Power Rake**
 - **Lifting Jib / Material Handling Arm**
 - **Auto Driver**
 - **Hydraulic Seed/Fertiliser/Gypsum Spreader**
 - **Dozer Blade**
 - **Sieve Bucket, Grapple Bucket, Grabs**
-



CASE TR320 COMPACT TRACK LOADERS

The Case TR320 combines industry-leading breakout and horsepower with best-in-class tractive force, providing you with maximum stability and power transfer to the ground. With increased power and performance along with improved comfort and visibility, there is no equal. CEGR technology helps to meet new Tier 4 emissions regulations while also increasing productivity, improving fuel efficiency and increasing uptime.

Specifications	TR320
Engine - hp (kW) @ 2500 RPM	92hp (67kW)
Operating weight lb (kg)	9600 (4,355kg)
Bucket Breakout Force - lb (kN)	8,700 (39kN)
Rated Operating Capacity - lb (kg)	3,200 (1451kg)

- **EH Controls (Ability to switch between “H” pattern and “ISO” controls)**
- **High Flow, Enhanced Flow & Standard Flow Models**
- **Rear Rippers available**
- **2 - speed**
- **4-in-1 Bucket with bolt on Cutting Edge, weld on Teeth option**
- **Air Cab, Heated Seat**
- **Mine Spec. Registered**
- **E-Stops**
- **Lockable Starter & Battery Isolators**
- **Fire Extinguisher, Beacon, UHF**
- **Radial lift (TR) model engineered for digging, prying and pushing**
- **New 95Litre fuel tanks provide improved fuel efficiency.**
- **25% larger, improved cab delivers more room, visibility, comfort and control.**
- **Dozens of upgrades include optional heated air suspension seats, air conditioning and a removable front door and side windows.**
- **Revolutionary ultra-narrow wire side screen design and larger glass windows give you more visibility.**
- **Case exclusive side lighting lets you get more done – day or night.**
- **Dozer-style undercarriage is engineered to hold fast on steep slopes and take command of muddy or sandy terrain.**
- **Rigid track frame has fewer moving parts making it more durable and easier to maintain than suspension track systems.**
- **Advanced roller and idler technology reduces maintenance costs and increases undercarriage life.**
- **Narrow chassis width makes it easy to load and unload on trailers.**





CASE TV380 COMPACT TRACK LOADERS

Case Compact Track Loaders deliver more power and exceptional bucket breakout force. The dozer-style undercarriage is engineered to hold fast on steep slopes and take command of muddy or sandy terrain. Our rigid track frame has fewer moving parts, so it is more durable and easier to maintain than suspension track systems. Enjoy improved visibility, operator comfort, climate management and operator controls with Case Compact Track Loaders.

- **EH Controls (Ability to switch between “H” pattern and “ISO” controls) 2 - speed**
- **4-in-1 Bucket with Cutting Edge and Teeth**
- **High Flow Hydraulics**
- **Air Cab, Heated Seat**
- **Registered**
- **Mine Spec.**
- **Lockable Battery Isolator**
- **Fire Extinguisher, Beacon, UHF**
- **Vertical Lift (TV) model** engineered for load-and-carry jobs
- **Superior hinge pin height** positions the bucket higher to load trucks faster
- **25% larger, improved cab** delivers more room, visibility, comfort and control.
- **Dozens of upgrades** include optional heated air suspension seats, air conditioning, a removable front door and side windows.
- **Revolutionary ultra-narrow wire side screen design and larger glass windows** give you more visibility.
- **Case exclusive side lighting** lets you get more done – day or night.
- **Dozer-style undercarriage** is engineered to hold fast on steep slopes and take command of muddy or sandy terrain.
- **Rigid track frame** has fewer moving parts making it more durable and easier to maintain than suspension track systems.
- **Advanced roller and idler technology** reduces maintenance costs and increases undercarriage life.
- **Narrow chassis width** makes it easy to load and unload on trailers.

Specifications	TV380
Engine - hp (kW) @ 2500 RPM	92hp (67kw)
Operating weight lb (kg)	10,200 lb (4,625kg)
Bucket Breakout Force - lb (kN)	8,700
Rated Operating Capacity - kg	1723kg

CASE 445 Series 3 SKID STEER LOADERS



The industry-proven power plant from Case is known for its efficiency, reliability and long life. The 4 cylinder, turbocharged Case engine on these machines gives you clean-burning Tier III-certified power and plenty of torque. Case delivers 100 percent of the engine power to the pumps and components by coupling the hydrostatic drive pumps directly to the engine flywheel, giving you more power when you need it.



Specifications	445/S3
Engine - hp (kw) @2500rpm	84 (61kw)
Operating weight lb (kg)	8120 (3683)
Bucket Breakout Force - lb (N)	7,400
Rated Operating Capacity - lb (kg)	2,500

- Norm 4-in-1 Bucket w/ Bolt on Cutting Edge & Weld on Teeth
 - Available fitted with or without Solideal LifeMaster OTT Tracks
 - Air conditioned /Heated Cab
 - 2 - Speed
 - Ride Control
 - High-lift
 - UHF
 - E-Stops, Lockable Starter & Battery Isolators, Fire Extinguisher, Beacon
 - Registered
 - Mine Spec. with Risk Assessment, maintenance schedules etc available.
-

Volvo FL7 FD Tip Truck

**Rigid, 9 speed Manual (HR License Required)
Fully Synchronmesh gearbox.**

Beacon, UHF, Fire Extinguisher + Risk assessment.

Will fit our Ramps and Skid Steers/Posi tracks in the back with a spreader bar.

Available at a base daily + km rate.



	FL7 FD Tipper
Engine - hp	290
Cylinders	6
Gross Vehicle Mass (GVM) (kg)	16000
Tare (Kg)	6400
Payload (Max)	9000Kg
Seats	2

Daken Dillon Pasture Harrows

12' Daken Dillon Pasture Harrows (Drag Harrows)

Often used for final soil prep after seeding on rehabilitation sites, pastures etc they are also beneficial for competently breaking up and spreading clumps of manure in an agricultural environment.





AUGER DRIVES

Premium Drives PD4-5 - PD5-5

Suit Machine Types: 3 to 11 tonne

Mini excavators, skid steer loaders, tractors, tele-handlers, truck cranes, front end loaders, wheeled loaders, back hoes up to 11 tonne (dependant on flow rate).

Specifications:

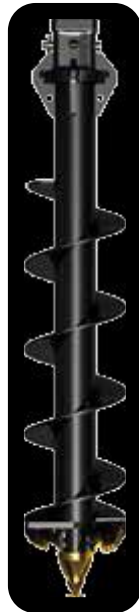
Overall Length - 624mm

Diameter - 240mm

Weight (no frame/hitch) - 60kg

Features:

- High Quality Australian made Digga Gearbox
- Fitted with Digga/Eaton Bell motor



AUGER BITS

Digga augers are true cut, meaning a 300mm auger will drill a 300mm hole & can drill through Earth, Clay, Concrete, Bitumen and most fracturable rock.

A5 Augers, 75mm square hub, 6mm Flight thickness, 1200mm O/All length. MFT Teeth & Pilot - suitable for earth, general & hard conditions.

A6 Augers, 75mm square hub, 8mm flight thickness, 1500mm O/All length. MFT teeth & pilot - suitable for earth, general & fracturable rock

Hires are supplied with 3 augers, your choice of: 150, 200, 250, 300, 350, 400, 450, 600 or 900mm

Other sizes available upon request



ADAPTERS

Digga Auger Adapters - convert either your 65mm Round Auger Drive unit to suit 75mm square hired bits, or use a Square to Round adapter on a hired Drive unit to fit your 65mm round Auger Bits



AUGER EXTENSIONS

Digga's drilling extension range is the ultimate in quality and cost effectiveness. Manufactured inhouse by Digga using only the highest grade materials and strictest quality control.

- Easy to connect design. No adapters required
- Welded hub and shaft reduces excess play in the connections ensuring a straighter hole.
- Australian Made quality.
- Available in 1000mm outer - other lengths available on request



MODEL NUMBER	X075
TYPE	OUTER
AUGER SUITABILITY	A6, RC6 & DR6
DRIVE SUITABILITY	UP TO PD8
MACHINE SUITABILITY	5 TO 8 TONNE
MAX TORQUE	7,200Nm
STANDARD HUB	75MM SQ
HUB OPTIONS	N/A
BODY	114mm DIA x 6mm WALL



Cement Mixers

Digga's Cement Mixer can mix anything from cement to fertilizer and fits quickly and easily to either your or our Digga Planetary Auger Drive.

- Easy to install
- Suits all Digga Auger Drives, Mini Auger Drives and auger drives fitted with Swing Control System
- New Design with easy connection
- Maintenance-free



SPECIFICATION

LARGE BOWL MIXER

Total Capacity ^	5.7 Cu ft / 160 L
Working Capacity *	4 Cu ft / 115 L
Length	1424 mm
Width	1212 mm
Height	1571 mm
Width (Bowl Only)	740 mm
Weight (Bowl, PD3 & Frame)	173 kg
Weight (Bowl & Cradle)	53 kg

Stick Rake/Dozer Blade Combo



RAKE IT - LEVEL IT with one attachment

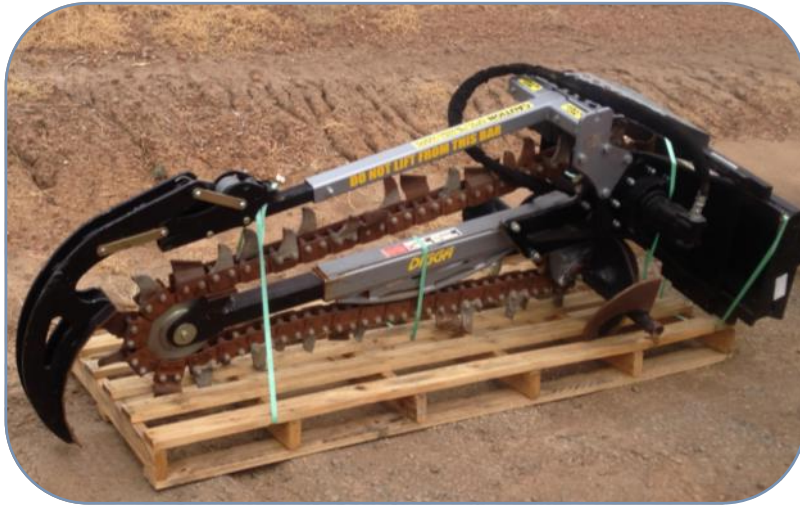
The new Dozer Blade Stick Rake is versatile and simple to use. By simply removing 4 locking pins and manoeuvring your bobcat, you are able to replace the locking pins therefore changing this attachment from a dozer blade to a stick rake.

The dozer blade comes with a replaceable bolt on cutting edge providing you with a longer lasting attachment. The strong materials used to build the dozer blade allow it to be used in the harsh Australian environment.

The stick rake tines are manufactured from 500 Grade Bisalloy to give it extra strength and durability. The Dozer Blade Stick Rake is 3000mm wide and is ideally suited to skid steers and track loaders.

This adaptable attachment can be used for clearing debris, small rocks and refuse, which makes it an ideal attachment for councils, landscaping, construction, mining and agricultural industries. Available for multifit and Cat skid steer loaders





DIGGA HYDRIVE XD TRENCHERS

The Hydrive range of trenchers is designed for the serious trenching contractor. Hydrive Extra Duty is ideal for machines over 4.5 Tonne, and primarily suited to experienced operators. Fitted with a compact, powerful Digga planetary drive system & twin spoil removal augers. The unique drive system positioning allows for more usable horse power providing greater efficiency. Twin auger spoil removal deposits finely crumbled spoil to both sides of the trench for effective compaction back into the trench. Frame can be side shifted for digging close to permanent structures ie buildings, trees.

Hydrive XD for extra duty trenching up to **1200mm digging depth** with either **150 or 300mm digging width**.

Suit Machine Types:

Tele-Handlers, Truck Cranes, Front End Loaders, Wheeled Loaders, Back Hoes, Skid Steer Loaders.

CRUMBER BAR

This spring loaded crumber is available on all trenchers.

The crumbers have springs to give constant down pressure on the bottom of trench to scoop all spoil missed in the initial cut of the chain, throwing it back onto the chain to be carried back to the surface.

PLEASE NOTE that the crumber must be in the fold back position until the trench has started, then drop the crumber forward and pin off to continue trenching.

If the crumber is in the trenching position from the top of the ground the spring in the trencher will over extend as it is going down the first part of the trench resulting in possible crumber failure and damage.

Max Flow (LPM)	Max Pressure (BAR)
70-115	240



SPREADER BARS

Spreader Bar Ideal Use:

- Easy 4-in-1 bucket pickup design.
- Suitable for spreading/ levelling soils.

Available in:

2400 x 2600

2400 x 2000

2000 x 2000

1800 x 2100

1300 x 2100





SLASHERS

The Slasher is a slashing attachment for Skid Steer Loaders that can be used for the effective cutting and clearing of grass and low ground shrubbery. Ideal for landscaping, agriculture, roadway maintenance, parks maintenance and general slashing.

Slasher Features & Benefits

- Multi-fit pickup
- Adjustable height 40 - 140mm
- Chain curtain for debris suppression
- Twin blade, dual rotation, single cutting bar
- Heavy duty construction - built for Australian conditions
- Optional jockey wheel (for use with skid steer loaders only)
- Available in 1800mm (70") width

Rounded side skids for smoother manoeuvrability over uneven terrain.

Ideal Use:

Landscaping, agriculture, roadway maintenance, general slashing, park maintenance.

Machine Suitability:

Available to suit most makes of skid steer loaders.

Skid Steer Loader Slasher Specifications

Machine Suitability	Standard Skid Steers
Weight	470 Kg
Length	2115 mm
Width (Overall)	1930 mm
Height	665 mm
Rec. Flow	30 - 70 lpm
Max Pressure	240 bar



QUICK RIPS – 7 tyne

Clamp in Bucket rippers for Skid Steer Loaders.

1540mm o/all width

Easy 4-in-1 bucket pickup design. Suitable for ripping soil. Features 7 tynes, fitted with sandwich-pinned teeth for Heavy conditions



14" HTC Hydraulic Tree Shears

- Cuts a 14" tree in a single pass in seconds
 - Built in USA from 1" high tensile steel
 - Narrow profile gets in tight spaces
 - 110° Hydraulic Rotation
 - Weight - 1280 lbs.
 - Single blade design encourages trees to fall the direction of the blade's travel
 - Narrow shear gets into tight spaces
- Escape proof serrated jaw grips tree to allow 100% of the machine's power to be applied to the blade.
- Fastest cycle time
- Rotates with a flick of a switch from inside the safety of the cab
- Single 1¼" blade eliminates complicated adjustments and sharpening

TREE SHEAR

Timberline® Tree Shears rotate 110° with a flick of a switch from the safety and comfort of your machine's cab to accommodate horizontal and vertical cutting, plus holding and moving of felled trees. Our unique single blade design allows for predictability of falling trees. In almost all cases trees fall to the left, a feature owners of a Timberline® hydraulic tree shear highly value because it makes clearing large stands of volunteer growth quick and easy.

Timberline® Tree Shears have an escape proof lower jaw serration that allows for 100% of your machine's power to be applied to the shear. It also gives the tree shear a grapple like feature, allowing it to clamp onto felled trees to pick them up and remove them from the site.



Timberline® Tree Shears are built tough in the USA from high tensile steel for a lifetime of use. Construction methods and materials make this the vanguard of hydraulic tree shears.



- Standard 4in1 (w/ or w/out teeth)
- Loader-Style 4in1 (w/ or w/out teeth)
- Tilt 4in1 Buckets

NORM Engineering 4-IN-1 BUCKETS

The newly designed Norm 4 in 1 Bucket for Skid Steer Loaders features elements to make them stronger and therefore last longer than previous products

A now time proven and industry proven main pivot section incorporated with other Norm original elements, give strength and durability second to none

Norm 4 in 1 Buckets come with up to 3 bolt-on cutting edges, either with or without weld-on teeth and an extra heavy duty flat floor; which is not only stronger but also allows easy filling and emptying of the Bucket over the conventional hip floor design



6 TINE GRAPPLE

Sidney's patented Gorilla Grapple is the strongest, most versatile skid steer grapple on the market today. Quality in design and materials makes our Gorilla Grapple truly "tougher than the rest".

Built from 1" high tensile steel, the tines are rated to lift and break 4" to 6" thick reinforced concrete. Breaking, raking and carrying loads of Cement, steel, bitumen and trees. The points of the tines are hardened to 400 Bhn to increase their strength.

The tines of the Gorilla Grapple open to 31.5 inches, making it easy to handle a wide variety of material. To eliminate flexing, the tines pivot on a 2.5 inch solid steel shaft.

The 3000 lb. output of your skid steer translates to over 37,000 lbs. of mechanical pressure at the end of the jaws. What you can pick up is only restricted by the counter balance provided by the GVW of your skid steer.

When closed, the tips of the upper tines hang below the lower tines. This allows the Gorilla Grapple to be used to scarify and rip tough ground and roads.

The Gorilla Grapple is built for a lifetime of low maintenance operation. All major pivot points are machined and greaseable. Standard units come with the universal skid steer quick attach coupler, so will fit almost all makes of Skid steer.

Rated capacity: The capacity of the skid steer is the primary factor

- **Weight:** 900 pounds
- **Hitch:** SAE J2513 Universal skid steer coupler standard (other couplers available)
- **Cylinder:** 4" bore x 8" stroke. Rated for 3000psig operating pressure
- **Crushing force at tips:** >3.5 tons
- **Plumbing:** Gates 4000psig hoses with durable wrap are provided with the unit
- **Wiring:** Wiring is provided with the unit
- **Tine material:** 1.00" thick ASTM A572-Gr 50
- **Tip Hardfacing:** 0.25" thick AR400



CAT BRUSHCUTTER (BUSH HOG)



APPLICATION

Cat® Brushcutters are used for clearing overgrowth from highway medians, easements, Right Of Ways, pipelines, fencelines and for initial land clearing for housing, construction sites etc.

BLADES AND BLADE CARRIERS

High strength blades deliver high cutting action, durability and also mulch overgrowth. Fully balanced blade carriers prevent unnecessary vibration. Tapered blade carrier allows cutter to ride up over stumps and rocks.

LONG LIFE MOTORS AND GEARS

Long life motors deliver years of high-speed blade performance. Machined and heat treated gears in sealed gearbox provide reliable, durable transfer of torque from motor to blade carrier.



MOTOR PROTECTION GUARD

Motor protection guard shields motor and gear box from debris. Removing a set of bolts allows this hinged guard to be moved away for easy access to motor and gearbox.

GALVANIZED COIL CHAINS

Galvanized coil chains (7.9 mm [5/16 in] proof) provide debris guarding in the front and rear areas to restrict flying debris and material.



HEAVY-DUTY SKIDS

Heavy-duty skids allow easy movement of the brushcutter through uneven terrain while maintaining stability of the work tool and machine.



Overall Width	1880.0 mm
Cutting Width	1829.0 mm
Maximum Cutting Diameter	76.0 mm
Required Hydraulics	Standard Flow
Overall Length	2159.0 mm
Overall Height	518.0 mm
Weight	499.0 kg
Required Hydraulic Flow	57-80 L/min (15-21 gpm)
Optimal Hydraulic Pressure	150-230 bar (2176-3340 psi)
Blade Height (off Ground)	40mm
Motor Displacement	140.0 cm ³ /rev



FUEL CELLS

Self Bunded Tanks - 100% Bunded Design

- Removable Inner Tank for inspection / ease of maintenance
- Fully Baffled, UN31AY approved to be moved with liquid in the tank
- Four Way Forklift Access / Certified Lifting Lugs to Lift Tanks when Full
- Perfect for use with Generators and other Stationary Diesel Engines for additional fuel storage

Approved to AS1940, AS1692, UN31AY.



ROTARY TILLER

Suit Machine Types: Skid Steer Loaders

Designed for breaking up and pulverizing soil, mixing compost, gypsum or other materials into existing soil, and stabilizing and leveling existing terrain in landscape finish applications .

Single motor direct drive system is matched to the machine's auxiliary hydraulic system for maximum performance.

Unique spiral tine arrangement provides 10% greater cutting performance over tillers with standard placements.

Features:

Dual rotation with 36 bi-directional hard faced tynes

Adjustable depth—25-152mm

2272mm O/All width—1850mm working width

Required Flow: 60-114 LPM



Pallet Forks

Australian made frame, quality tested to ensure strength and reliability.

Load rating tested to Australian Standard AS 2359.1

To suit Skid Steer Loaders, Front End Loaders and Telehandlers

Features:

- Australian made frame designed from quality steel.
- Load rating tested to Australian Standard AS 2359.1
- Easy quick fit attachment for most skid steer loaders.
- Easy width adjustment.
- 1600kg & 1800Kg load rating available



Fork Tyne Extensions

Australian made, quality tested to ensure strength and reliability.

Load rating tested to Australian Standard AS 2359.1

To suit Skid Steer Loaders, Front End Loaders and Telehandlers

Features:

- Easy quick fit attachment
- Easy width adjustment.
- 2.5 Tonne Load Rating (dependant on parent forks)



Tilt Attach

The Tilting Hitch is an industry leading attachment. By attaching to the machines standard quick attach frame the Tilting Hitch allows the operator to have radial control over any attachment that is on the machine.

The Tilt Attach allows the operator to tilt any attachment including 4 in 1 buckets, trenchers, slashers and brooms to assist work on hilly terrain or uneven surfaces and to enable ground shaping work with a 4 in 1 bucket.





BUCKET BROOMS

Quality Australian made, forward & reverse bucket broom. Featuring high performance hydraulic components, a hinged lid for fast emptying, heavy duty wheels and replaceable wear edge on bucket. Removable side shift frame available in a variety of widths to suit all machines.

Suit Machine Types:

Skid steer loaders, front end loaders and telehandlers.



- Easy to use built-in brush adjustment handles
- Forward/Reverse
- Replaceable cutting edge on bucket
- Closed Face for Safety
- 24" replaceable 1 piece poly or poly-wire brush
- Available in 2000mm & 1800mm wide

Ideal Use:

Sweeps and collects all kinds of debris in road construction, factory car parks, stock yards & more

Ezi Loada 4.8 TONNE ALUMINIUM RAMPS

Features:

- Clean consistent welding
- Stronger Channel rails for superior wear and tear
- NATA Certified testing
- Additional high traction rungs prevent slippage

Superior manufactured aluminium ramps. 100% Australian made on Digga high tech robotic welder, maintaining consistent weld for longer life and reliability.

Specifications:

Load Rating	Length (A)	Width (B)	Weight (per ramp)
4.8T	3450mm	450mm	45Kg



72" EXTREME DUTY ROTARY AXE (Ground Shark)



Machine: High Flow/ ENHANCED Flow Skid Steer Loaders
Attachment: Rotary Axe
Class: Heavy Duty

Digga's heavy duty 72" Rotary Axe is the ultimate attachment for clearing & shredding thick bush & scrub. Working in conjunction with the heavy duty push bar, the front hood opens up exposing the 3/4" blades past the guards, enabling close up axe-like cuts to remove trees up to 7" (180mm) in diameter.

For the ultimate in clearing, carbide teeth have been added to the spinning disc to effectively remove stumps and create a clear path. The Rotary Axe boasts a world leading design as well as quality construction for increased productivity, reliability, and ease of maintenance.



- Protected, direct drive system for smoother, quieter operation
- Includes: Stump grinding carbide teeth to increase shredding performance and allow stump removal
- 72" Cutting width with alternating bevel blade design - providing a deep penetrating, axe-like, self-clearing cut
- Blades are made of 3/4" thick high grade steel with a reversible design for added blade life
- Steel 'clean deck' design - Helps keep the deck clear of debris. Easier to clean and maintain
- Heavy duty construction allows for lower centre of gravity and better stability on hillsides
- Highly visible pressure gauge - Prevents excessive stalling which would otherwise cause overheating, providing feedback to the operator to help maintain peak performance

Ideal Use

A Rotary Axe is used for vegetation clearing, preparing sites for construction projects, clearing trails, scrub and undergrowth as well as shredding branches and saplings. It is ideal for cleaning up fire breaks, clearing pipelines, right of ways, lease reclamations and fence line maintenance.





POWER RAKES

Features:

- Heavy-duty frame extends life.
- Hydraulic angling to angle 20 degrees in either direction.
- Dual direct-drive motors deliver more efficient power directly to the drum. 40% more efficiency produced over chain driven models.
- Low maintenance costs - No chains or sprockets used.
- Bi-directional drum can work soil in both directions.
- Hydraulic flow 40 - 150lpm.
- Hydraulic Pressure 138-240Bar.



The new Fully Hydraulic 90" Digga Power Rakes grades, levels, rakes and removes debris, pulverizing and preparing the ground for a new seedbed or turf. Prepare sites for re-habilitation quickly and easily.

Ideal Use:

Windrowing of debris & site preparation, removal of turf, surface levelling.

Machine Suitability:

Skid Steer Loaders & Mini Loaders.



CERTIFIED LIFTING JIB / MATERIAL HANDLING ARM

Features:

Used in industrial, construction and agricultural applications, to pick-up, carry and load a variety of materials and equipment.

Designed to pick up, carry and load a variety of materials and equipment. Also well suited for loading, carrying and setting trees and large shrubs in landscaping applications.

Single, multi-angled load certified boom provides excellent visibility to the load.

Two lift points, one at the far end of the boom and one closer to the machine mid point, offer excellent reach plus load and carry capabilities

Two compartments on the front arm provide ample storage for chains and hooks.

- Machine Suitability:

Skid Steer Loaders



MUNRO AutoDriver

The MUNRO AutoDriver is the machine of choice for contractors, vineyard operators and government departments. The AutoDriver combines in one machine a fast action rockbreaker style hammer that does not leave the top of the post when driving and an hydraulic auger for drilling pilot holes.

The AutoDriver has a pat. pending downforce system that can add a percentage of the tractor mass to the driver making it the most efficient machine on the market. Without this downforce system these types of machines lose most of their efficiency trying to drive the machine up instead of the post down.

The AutoDriver driving function is a one handed operation allowing operators to adjust the machines tilt whilst driving to ensure a straight post. The auger is hydraulically engaged and stowed and can have downforce applied.

The system is easy to operate. Its speed and accuracy of setting makes it the most efficient and value for money machine on the market.

Combines, in one machine, a fast action earth auger for drilling a pilot hole, with a powerful post driver for setting a tight post every time.

Handles all types of posts with ease

- steel
- star
- treated pine
- concrete
- split
- square
- Round railway sleepers

Powerful, Flexible, Tough

- The safest and most efficient machine on the market
 - Automatic hammer does not leave the top of the post
 - Single handed hammer and combined downforce operation
 - Hydraulically engaged auger
 - Hydraulic reversible auger drive with a wide range of augers for different post sizes and ground conditions.
 - Drills to 1200mm
 - Forward, aft and sideways tilts combined with a wide base and two separate stability pads allows safe and efficient operation on hills or sloping ground.
 - Precise ergonomically located controls allow posts to be set quickly and accurately without fuss.
 - Has low overall height but still copes with normal posts
 - Firm and Fast post setting, with feather touch controls
 - Comes in telescopic version for taller posts
-



Hydraulic Spreader

Features:

HS8 Spreader: Hydraulic Control and Convenience

The Hydraulic Spreader (HS8) attachment is Bobcat's first hydraulic spreader. The self-loading hopper on the HS8 has an open top and can be used as a bucket, allowing an operator to efficiently fill the spreader from a pile rather than pour material into the top. With an 8 cubic foot hopper (0.27m³), the spread pattern is controlled by a hydraulic motor and three material flow gates that spread from 5.5m to 8.5 meters. The three individual gates, located on the hopper, maintain the rate of material spread.



- **Hopper Grate:** Filters unwanted debris from spread material.
- **Hydraulic System:** Spread pattern controlled by hydraulic motor that gives spread pattern of 5.5 to 8.5 meters.

Self-Loading Hopper: Allows the operator to use the hopper as a bucket, filling the spreader from a pile. Quickly and efficiently reload the spreading material into the hopper for big parking lot or road coverage jobs.

Ideal Use:

Spreading of gypsum, lime, sand, fertiliser, seed etc

Machine Suitability:

Skid Steer Loaders & Mini Loaders.

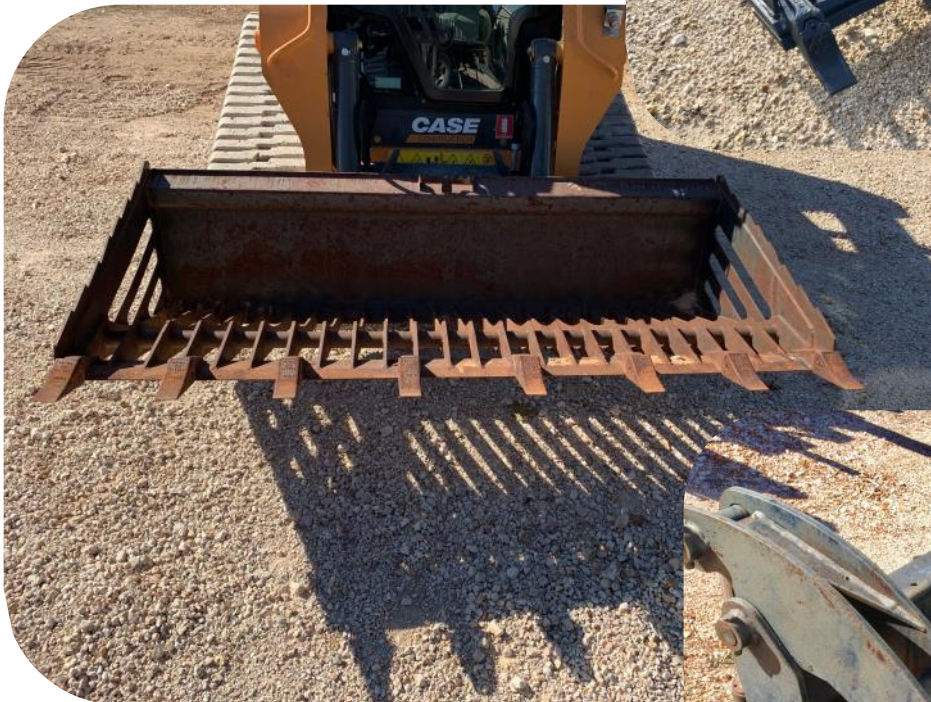
6-way Dozer Blade

Digga's Dozer Blade is a versatile attachment for dozing, leveling ground and general earthmoving work.



SPECIFICATION	
Model	ANGLE & TILT
Angle Tilt	±14°
Angle (Left & Right)	±30°
Width (15° Angle)	2082 mm
Width (30° Angle)	1880 mm
Width (Overall)	2133 mm
Length (Overall)	840 mm
Height (Overall)	725 mm
Weight	519 kg

SEIVE BUCKETS, GRAPPLE BUCKET, GRABS





MULCHERS



HARLEY RAKES



POWER RAKES

Available upon request

Monster Hire

Attachment & Machine Hire

Sales & Service

Chinchilla Qld 4413

0428 564 665

For Hire & Sales quotes and enquiries please phone directly 0428 564 665

email: admin@monsterhire.com.au

www.monsterskidsteer.com.au



YOUR LOCAL
AUTHORISED
DIGGA DEALER

