


COMMUNITY PLAYERS

May 1-3, 2026



THE
SOMEWHAT
TRUE
TALE
OF
ROBIN
HOOD



Goldenrod

Antiques
& Vintage

Open Seven
Days a Week!

402.223.0121 | Shop Local!
827 W Court St. Beatrice, NE

Justin Scheele
Justin's Neighborhood Meats, LLC



"Bringing people together"

Store Hours:
Tues-Fri: 9am-7pm
Saturday: 8am-5pm
Closed: Sunday & Monday

1725 North 6th
Beatrice, NE 68310

STORE: 402.230.3275
CELL: 402.806.9066
Scheele.justin@gmail.com

Justinsmeats.com

U-STOP

CONVENIENCE SHOPS



Blackburn
TECHNOLOGIES

115 N 5TH STREET
Beatrice, NE 68310
(402) 228-8822

- Computer Maintenance & Service
- System Sales & Upgrades
- Network Administration



www.blackburntechnologies.com

2025-2026
Board of Directors

President

Mason Gustafson

Vice President

Ariason Snurr

Treasurer

Anna Francis

Secretary

Lori Koch

Board Members

Jeffery Davis, Dawn Hirschler,

Maria Lemus-Piccolo,

Matt McNiff, Wayne Price,

Jenny Sutphin,

& Danny Toland

Student Representative

Brielle Toland

Staff

Managing Artistic Director

Tyler J. Rinne

Associate Artistic Director

Mel Voorhis

Patron Services Manager

Grace Frahm

Costume Librarian

Lindsay Armstrong

Custodian

Nick Sutphin

Programming at Community Players
is made possible thanks to
generous support from

THE HEVELONE FOUNDATION

aact
AMERICAN ASSOCIATION
OF COMMUNITY THEATRE

Improving Communities
One Theatre at a Time



Founded 1975

Our 29th Acting Up

Production

Season 50

Community Players engages and enriches Southeast Nebraska through the arts by deepening connections, utilizing inclusive programming, and producing quality live theatre.

Office Hours

M-F 10 am - 5 pm

Box Office Hours

M-F Noon - 5 pm &

2 hours prior to shows

Costume Shop Hours

W 5:30 - 7:30pm or by appointment

Visit us at

www.beatricecommunityplayers.com



The Nebraska Arts Council, a state agency, has supported this program through its matching grants program funded by the Nebraska Legislature, the National Endowment for the Arts, and the Nebraska Cultural Endowment. Visit www.nebraskaartscouncil.gov for information on how the Nebraska Arts Council can assist your organization, or how you can support the Nebraska Cultural Endowment.

GIVE. ADVOCATE. VOLUNTEER.

LIVE UNITED



BAGBY TRAVEL AGENCY

516 Ella • Beatrice, NE 68310
(402) 228-3391
www.bagbytravel.com



UNFORGETTABLE TOURS

These are the things to call home about!
Amazing excursions that will leave you with
everlasting memories!



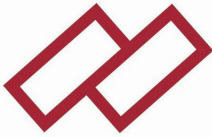
BEST PRICE GUARANTEE

We find you the best deals and experiences to
make your trip as stress free as possible!



BOOK WITH CONFIDENCE

Locally owned and operated. Put a face your
travel agent, focused on your satisfaction!



Brick and Mortar
Realty LLC



LOCALLY OWNED • EXPERIENCED • COMMERCIAL • RESIDENTIAL

KRISTA WIEDEL
BROKER/OWNER
402-239-9948

Ready to Sell?
List with us!



CRAWFORD *Amana*
Goodman[®] **LABRSON**
**HEATING & AIR
DUCT CLEANING**

402-520-2405

402-239-1808

Fox Funeral Home & Cremation Services



CHRIS & TIMOREE
KLINGLER

Where the difference is in the Caring

- Traditional Services • Cremation • Preplanning
- Competitive Pricing • Superior Service

Chapels in Beatrice, Adams, Sterling,
and Servicing the Surrounding Areas.

402-223-4096 • www.foxfuneralhome.net



Building better communities
and brighter futures.



1FSB.BANK

BEATRICE | 560 Sargent Street | 402.230.9359

Member FDIC



Sales and Repairs

www.bigbluebikene.com
bigbluebikeco@yahoo.com



Eric Kielian

402-230-3035
719 Market St, Suite A
Beatrice, NE 68310

Roehrs Machinery

Helping You Grow

1512 N. 6th Street • Beatrice, Nebraska
402-228-3319 roehrsmachinery.com

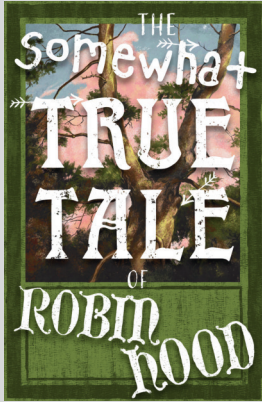
 kinetic

Ultra-fast fiber helps
you internet better.

Let's connect 402.228.7566



Cast & Credits



THE SOMEWHAT TRUE TALE OF ROBIN HOOD

Written by Mary Lynn Dobson

Directed by Mel Voorhis

Setting:

Sherwood Forest &
Nottingham Castle

Time:

The 12th Century
(with Mariah Carey)

Cast of Characters

Robin Hood	Lennie Zukowski-Faust
Maid Marian	Marie Erikson
Prince John	Lucas Cook
Sheriff of Nottingham	Jurnee Boller
Town's Guy	Sidney Davis
Lady in Waiting	Esther Colbert
Friar Tuck	Adeline Bolli
Will	Sophia Tunink
Little John	Charles Anderson
Allan	Briley Niles
Byron	Ryan Blake
Lady Laughlot	Paige Helmke
Mary	Ivory Vasquez
Lenore	Ravenna Brand
Donald	William Bunch
Dennis	Asher Hayes
Rich Man & Guard 1	Connly Klaus*
Fawning Ladies & Ensemble Roles	Chapel Bergen*, Kasen Eickmeier, Kellyn Phillips, Aubree Robinson, Trinity Sewell*, & Ciera Weakland*

* indicates CP Stage Door debut

There will be a 10 minute intermission

THE SOMEWHAT TRUE TALE OF ROBIN HOOD is produced
by special arrangement with Dramatic Publishing Company



GAGE COUNTY INVITES YOU TO

EXPLORE

VISITBEATRICE.COM

402.205.3292



Scheer

QUALITY FURNITURE

*Quality, Selection and Service
at Great Prices!*

Ron & Brandy Scheer

116 N 5th Street
Beatrice, NE 68310

(402) 228-4085

scheerqualityfurniture.com
scheerqualityfurniture@gmail.com



JONESGROUP

INSURANCE | FINANCIAL SERVICES

HOME • AUTO • BUSINESS
FARM • LIFE • HEALTH

Where Knowledge is the Difference



402-223-4247 • 601 N. 6th St. • Beatrice
www.jones-ins.com

Production Crews

Stage Managers

Mykaela Rideout,
ClaraAnn Kirkendall,
Brielle Toland, Carter Craven,
& Jonah Erikson

Lighting, Sound, & Set Design

Mel Voorhis

Set Foreman

Rod Koch

Assistant Carpenters

Doug Cudaback, Jonah Erikson,
Josh Erikson, John Francis,
Noah Mason, Nick Sutphin,
Marshall Tuttle, & Mel Voorhis

Scene Painting

Charles Anderson, Ryan Blake,
William Bunch, Asher Hayes,
Amanda Hayes, Mykaela Rideout,
Tyler J. Rinne, Trinity Sewell,
Marshall Tuttle, Tara Vasquez,
Ivory Vasquez, Mel Voorhis,
Lennie Zukowski-Faust,
& Josie Zukowski-Faust

Show Logo

Tyler J. Rinne

Props & Set Decoration

Bethany Burrow,
Mykaela Rideout,
ClaraAnn Kirkendall,
Brielle Toland, & Mel Voorhis

Lights & Sound Operator

ClaraAnn Kirkendall

Electrician

Brandon Clark &
Marshall Tuttle

Costume Design

Jean Spilker

Costumes

Jean Spilker & Jim Beran

Hair & Makeup

Leena Tunink

Box Office

Grace Frahm & Jean Spilker

Front of House Volunteers

Betsy Bolli, Jesse Bolli,
Jim McNeal, Wayne Price,
Wanda Redd, Marissa Saure,
& Josie Zukowski-Faust

**Special Thanks to Beatrice Daily Sun, KWBE, KUTT,
Nebraska Public Media, and Manes Lanes**

Any video and/or audio recording of this production is strictly prohibited.

Notice: So as not to disturb other patrons or the performers, patrons arriving late or that exit the auditorium during the performance will be asked to remain in the lobby until seated at an appropriate moment by the House Manager. A closed-circuit TV is set up in the lobby so you will not miss any of the performance.

**No generative artificial intelligence (AI) was used
during this or any Community Players production.**



PLAZA RIDGE DENTAL
for the smiles in your world

Jason C. Roche, D.D.S.
Krista K. Haake, D.D.S.

Phone: 402.223.4140

110 Eastside Boulevard, Suite A
Beatrice, NE 68310

**MEET THE STARS
OF OUR SHOW AT**
exmark.com



Beatrice, NE



JERRY L. SHELTON

Attorney at Law

(402) 223-4088

508 Court Street, Suite 103
Beatrice, Nebraska 68310



**Security
First
Bank**

A relationship you can count on.

www.security1stbank.com

Member
FDIC

BEATRICE • CLATONIA • CORTLAND • BLUE SPRINGS • LINCOLN



WE-DESIGN

MANUFACTURING & CONSTRUCTION

We offer comprehensive construction services, from new builds to storm repairs, alongside custom manufacturing, design, welding, laser cutting, painting and assembly.

615 E Main St., Plymouth, NE
402-656-5585

www.we-design.com



VINTAGE
VENUE

"A Charming Setting for the Event of Your Dreams"

620 Court Street
Beatrice, NE 68310
402.230.8389

<https://vintagevenuebeatrice.com>

K T M

KRAVIEC MAURSTAD LAW, PC, LLO

T.R.L.
TIEMANN
CONSTRUCTION

Celebrating
50 YEARS



2305 N 6th Street
 Beatrice, NE 68310
 Ph: 402-806-4202

Mon - Fri: 5:00a-9:00p
 Sat - Sun: 6:00a-8:00p



**Overhead Doors - Operators -
 Seamless Gutters -
 Sales - Service - Installation**



**5320 West State Hwy. 4 - Beatrice, NE
 402-228-1276 - BlueValleyDoor.com**



Your trusted choice for
 Commercial, Agricultural & Residential doors!

**WE'RE
 NEBRASKA
 IN A BANK**

Nebraska is togetherness. Forever giving back, always moving forward.

BEATRICE 523 Court Street, 402.228.3333
 523 N. 6th Street, 402.228.3461 • pinnbank.com

Pinnacle Bank
 MEMBER FDIC

You *Never Get A Second Chance To*
Make A First Impression

That's why companies turn to us for help in designing their company's materials. From full-color brochures to single color business cards.

223-3666 We can design your printed piece to give your company the first impression you deserve.

Arbor Ink

1703 N 9th Street • Beatrice and 1102 Broadway • Marysville, KS

Director's Note & Bio



The Somewhat True Tale of Robin Hood is a bit on the nose. The first thing you think of when you think of Robin Hood is either *Men in Tights* (especially if you are my father who quoted that often in our house growing up), or “steals from the rich and gives to the poor.” This parable of helping those in need is hilariously stitched (rather prominently) throughout our tale. Especially at a time in our world where many are systematically put at a disadvantage, it’s important to remember the gallant Robin Hood and his band of Merry Men.

The Evil Prince John (boo hiss boo hiss) despises Robin Hood’s altruism, but why? That is the question we must ask ourselves in the face of inequity. Why is generosity penalized? Why must some struggle and others thrive? Is a diamond-studded weather vane on the castle truly that important? Robin Hood reminds us that the best way isn’t always the easiest when faced with injustice.

It is with our merry band that we flourish; never alone.

Mel Voorhis

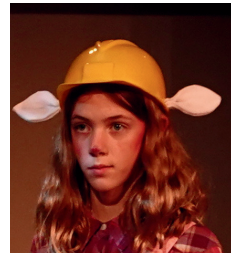
Mel Voorhis (Director) is the Associate Artistic Director at Community Players and a Director, Lighting Designer, Actor, Intimacy Director, and Stage Manager with a BA in Theatre from Berea College. Their directing credits include *Sweeney Todd*, *Hadestown: Teen Edition*, *The Addams Family*, *She Loves Me*, and *The Lion, The Witch, and The Wardrobe* with Community Players, and *The Aleph Complex* with the Berea College Theatre Laboratory. They have also lent their creative hand in lighting and props at CP and theatres around Kentucky. They were last seen on stage as Sylvia Van Kipness in *The Cottage* at CP. They are a Board Member for Nebraskans for the Arts and hold advocacy, accessibility, and consent-based practices at the forefront of all of their artistic endeavors. They would like to thank their dog, Flynn, for being the best office dog a theatre could ask for. “To the world we dream about, and the one we live in now.”

Help Us Give These Actors a Fond Farewell!

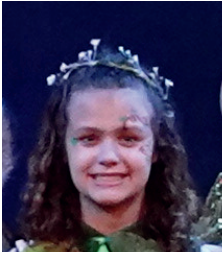
Help us celebrate our students who are aging out of the Acting Up program. We're lucky to have shared our semesters with them and wish them luck in High School!



Jurnee Boller
The NeverEnding Story (2023)



Adeline Bolli
Happily Ever Before (2022)



Kasen Eickmeier
The Lion, the Witch, & the Wardrobe (2025)



Sophia Tunink
Happily Ever Before (2022)



Ivory Vasquez
Choose Your Own Oz (2023)



Lennie Jean Zukowski-Faust
Choose Your Own Oz (2023)



BLAZN
— GRILL WORKS —
MGRILLS.COM

AMERICAN MADE NEBRASKA MADE BEATRICE MADE

GRILLS AND SMOKERS



KINNEY MFG
INTOMETAL•PRECISEFAB•J&JWIRE

Meet the Cast



**Charles
Anderson**



**Chapel
Bergen**



**Ryan
Blake**



**Junree
Boller**



**Adeline
Bolli**



**Ravenna
Brand**



**William
Bunch**



**Esther
Colbert**



**Lucas
Cook**



**Sidney
Davis**



**Kasen
Eickmeier**



**Marie
Erikson**



**Asher
Hayes**



**Paige
Helmke**



**Connly
Klaus**



**Briley
Niles**



**Kellyn
Phillips**



**Aubree
Robinson**



**Trinity
Sewell**



**Sophia
Tunink**



**Ivory
Vasquez**



**Ciera
Weakland**



**Lennie Jean
Zukowski-Faust**

Know a student who is ready for the stage?

Learn more about our Stars of Summer show for ages 8-16 at the back of this program



HROCH SEED SALES

Marc Hroch, Dealer
402-223-8078

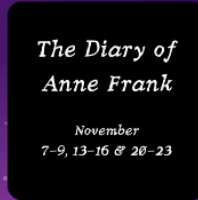
"Founded in Faith, Forged in America"



LINCOLN COMMUNITY PLAYHOUSE



TICKETS AVAILABLE AT LINCOLNPLAYHOUSE.COM



Farm Credit Services of America

CONTACT US FOR ALL YOUR AGRICULTURAL FINANCING NEEDS

Beatrice and Lincoln, Nebraska | 402.223.2385

Agriculture Works Here.. > FCSAmerica.com

Smarter Insurance for Agriculture.®



Pete Spilker
Jake Sykes
Darin Baehr
3216 N. 6th
Beatrice, NE
402.228.4232



Farm & Ranch | Crop | Commercial Ag | Workers' Comp | Succession Planning

Farm Bureau Property & Casualty Insurance Company,* Western Agricultural Insurance Company,* Farm Bureau Life Insurance Company*/West Des Moines, IA. Individual must be licensed with issuing company to offer insurance products. *Company providers of Farm Bureau Financial Services. PR-PB-A (12-23)

JIM'S CARPET

Satisfied Customers Are Our Best Ads

www.jimscarpet.com

Jim Oltman
Brandy Scheer
E-mail: jimscarpet@windstream.net

308 Court St.
Beatrice, NE 68310
(402) 228-3684

LINCOLN'S SYMPHONY ORCHESTRA

EDWARD POLOCHICK, MUSIC DIRECTOR

2025-2026 SEASON



FEB 13 EXPERIENCE THE INTRIGUE
MAR 06 THE SPACE BETWEEN
APR 10 POWERFUL PERSEVERANCE

APR 11 RIVER CITY PUPPETS
APR 24 THE MUSIC OF HARRY POTTER
MAY 02 INSPIRATION & COURAGE

LINCOLNSYMPHONY.COM | (402) 476-2211

Community Players, Inc.

2025-2026 First Nighter Patrons

Diamond Patrons (\$2,500)

Marilyn Coffin

John & Vicki Rinne

Platinum Patrons (\$1,200)

Anonymous

Elizabeth Claassen

Trudy Dueck

Shirley Montgomery

Gold Patrons (\$650)

Dr. Walt & Rosalie Duffy

Brent & Valerie Frahm

Roger & Karen Girch

Mason & Natalie Gustafson

Phil & Judi Knowles

Charles & Laureen Riedesel

Tyler Rinne & Marissa Saure

Krista Wiedel

Southwick Chiropractic

Silver Patrons (\$300)

Charles & Donna Bentjen

Twyla Bray

Brenda Carnes

Jeff & Brenda Davis

Dawn Hirschler

Rod & Lori Koch

Barrie & Ann Luers

Marilyn McMahon

JJ Purdom

Barbara Remmers

Duane Ruh

Dianne Springer

Mary Beth Tuttle

Callan & Cindy Williams

Kraviec Maurstad Law, PC, LLO



First Nighter Patrons (\$200)

Darryl Baker	Allen & Deb Langdale
Gary Barnard	Mickey Larkins
Erna Beach	Oliver & Zita Lomax
Norman & Ramona Boone	Chad & Courtney Lottman
Vicky Boone	Susan McLain
Marilee Brinkmeyer	Robert & Dorothy McLellan
Vicki Cain	Doug & Joanne Neemann
Brandon Clark	Mari-Ann Pesek
RJ & Edie Crandall	Wayne & Heidi Price
Jan Dalke Anderson	Chuck & Cheryl Rabstějnek
Myron Dorn	Dwight & Barbara Schmidt
Terry & Ella Doyle	Roselyn Shaffer
Dee Enevoldsen	Steven Shively
Dave & Lisa Eskra	Noah & Ariason Snurr
Mark & Angy Essam	Scott & Jean Spilker
Tim & Mary Graff	Gary & Muriel Thompson
Joel & Donna Gustafson	Doris Thornburg
Sheryl Harrington	Jason & Tamara Venneman
Connie Hartig	Judith Vrbka
Jill Helmke	Janice Waltke
Rich & Linda Hovendick	Greg & Louann Weaver
Merle & Jane Jobman	Tyler & Beth Weishahn
Patty Kaufman	Stacy Williams
	Dorothy Zimmerman

Interested in being featured in next season's programs or thanked on the Lobby TV? Learn more about becoming a First Nighter under Coming Attractions at the back of the program!

Favorite Auto Parts Store
Thank You For Your Votes!



Know How

Since 1972

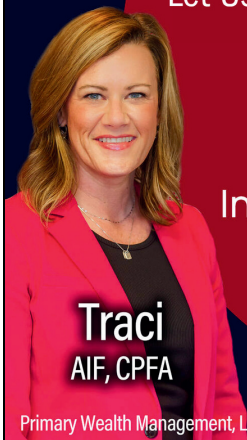
Over 50 Years in Beatrice

Locally Owned, Nationally Known

CITY MOTOR SUPPLY

612 Bell, Beatrice • 402.228.3488

Let Us Put the Spotlight on Your Retirement



Traci
AIF, CPFA



402.223.3433
GarnettInvestments.com



Paul
AAMS, CPFA

Primary Wealth Management, LLC ("Primary") is a SEC registered investment adviser whose principal office is located in Nebraska



**In the spotlight:
you.**



MembersOwn
CREDIT UNION

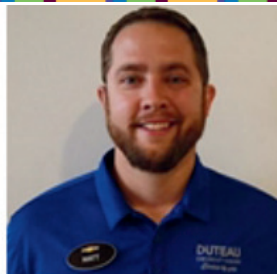
*We're here to support
your next financial act.*

MembersOwnCU.org | 402.223.4204 | 2600 Eastside Blvd 

When you want to experience

DRAMA

Go to the theatre, not the car dealership.



Matt Jurgens

Sales Consultant
402-239-5670
mjurgens@duteau.com



Summer Hours: April - September

Wednesday - Saturday 10:00 a.m. - 4:00 p.m.

Winter Hours: October - March

Thursday - Saturday 10:00 a.m. - 4:00 p.m.



101 North 2nd Street

Beatrice, Nebraska, 68310

Phone: 402-228-1679

Email: info@gagecountyhistory.org

Website: gagecountyhistory.org

From November 25, 2025, to March 26, 2026, see the 50th anniversary exhibit of Beatrice Community Players!



kw KRACKE
REAL ESTATE GROUP Powered by
KELLERWILLIAMS.

402-432-3462
jayne@donaldkracke.com

www.krackerealestate.com

HOMESTEAD **HARMONIZERS**

Come Sing With Us!

Mondays - 7:30 PM

First Presbyterian Church - Beatrice



Let Us Sing For You!
Arrange a Performance

www.homesteadharmonizers.com

Follow us on Facebook

Coming Attractions

Community Players 2026-2027 Season

The Mainstage season will kick off with *My Fair Lady*, returning to our stage after a 26-year absence. The season continues with *Baskerville*, a unique Sherlock Holmes story, adapted from "The Hound of the Baskervilles" by prolific playwright Ken Ludwig. *Shrek: The Musical* will be our big February production next season, bringing to life the hilarious and offbeat animated classic. To balance that out with a mature, family drama, the next show is *August: Osage County*. The final show of the Mainstage season is *Suite Surrender*, a story of two divas who have to share a Florida hotel suite, much to their consternation and the destruction of everything around them!



More excitement awaits in our Stage Door shows, kicking off with Stars of Summer's production of *Anastasia: The Musical (Youth Edition)* and the Young Adult Theatre show *She Kills Monsters*. Acting Up will produce *The Little Prince*, an adaptation of the timeless children's book, and *A Thousand and One Nights of Reality Television*, a silly send-up of fairy tales and modern TV.

If you thought the 50th Season was exciting, rest assured that we have even bigger and better things waiting for you during Season 51! You can find out more about all of these great shows on our website. Season Tickets are available now, and offer a 20% discount when compared to buying General Admission. You won't want to miss a single show next season, so purchase your Membership now!



402-228-1905
CaspersConstruction.com



ANNIE

Mainstage

Performances:

June 4-7 & 11-14, 2026



With equal measures of pluck and positivity, little orphan Annie charms everyone she meets! Determined to find the the parents that abandoned her years ago, it's adventure after adventure for Annie as she foils the evil Miss Hannigan's machinations, explores 1930s NYC, and even befriends President Roosevelt, all before finding a home and a new family with billionaire Oliver Warbucks.

ANASTASIA: THE MUSICAL **(Youth Edition)**

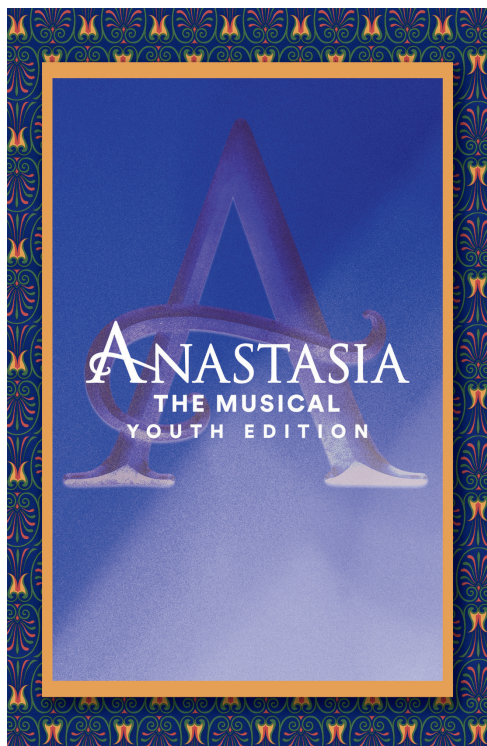
Stars of Summer

Auditions: May 29, 2026

Performances: July 9-12, 2026



Her past is a mystery. Her future is an adventure. From the twilight of the Russian Empire to the glitz of Paris, a brave young woman sets out to discover the mystery of where she came from. Pursued by ruthless Soviets determined to silence her, Anya enlists the aid of a dashing con man and a lovable ex-aristocrat to join her on an adventure to find the meaning of home, love, and family.





Black Hills Energy

Ready