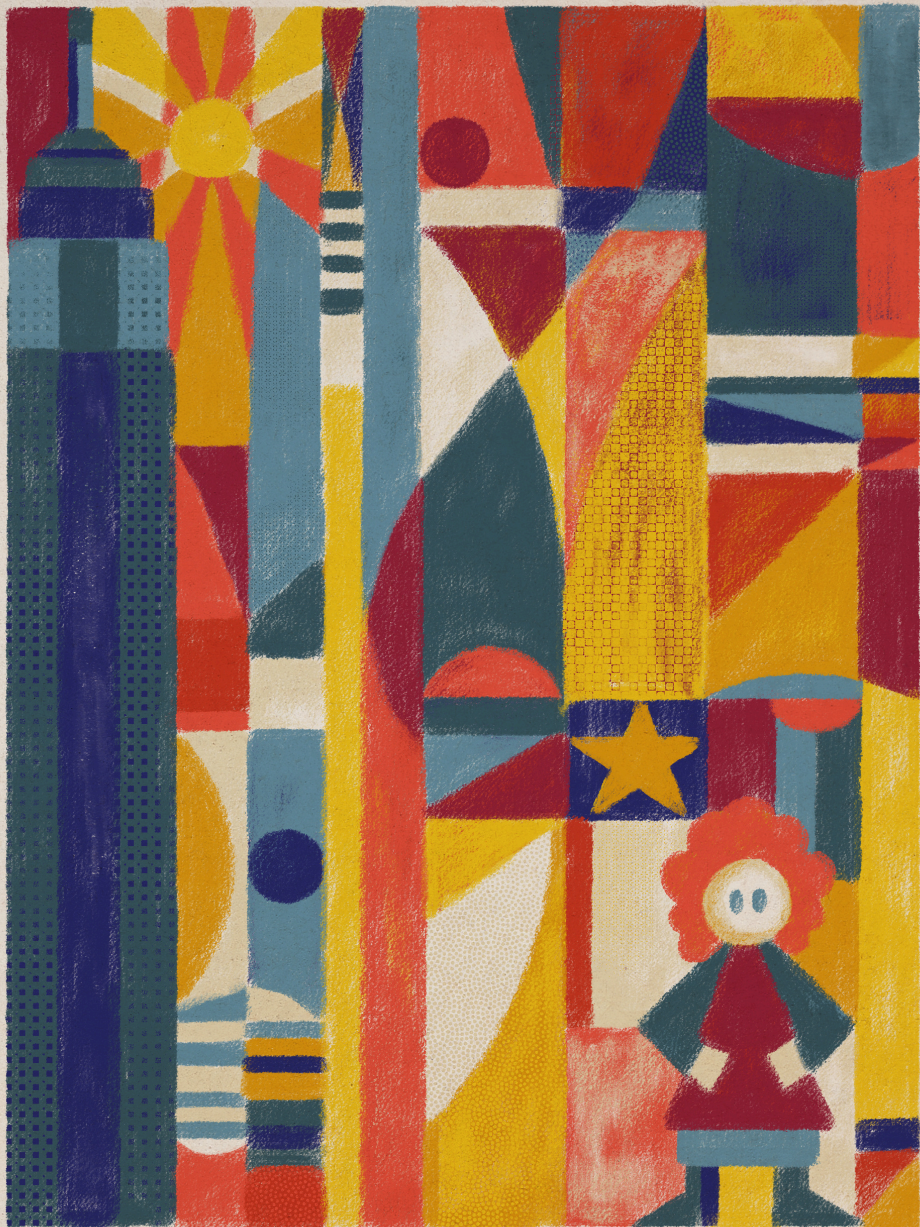


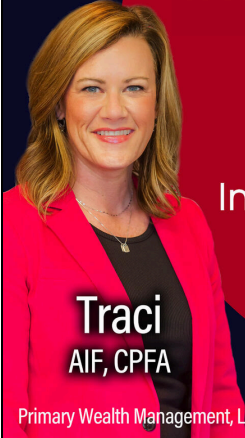
Annie

COMMUNITY
PLAYERS



June 4-7 & 11-14, 2026

Let Us Put the Spotlight on Your Retirement

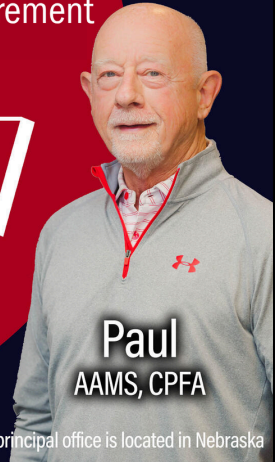


Traci
AIF, CPFA



Garnett
Investment Strategies

402.223.3433
GarnettInvestments.com



Paul
AAMS, CPFA

Primary Wealth Management, LLC ("Primary") is a SEC registered investment adviser whose principal office is located in Nebraska

CRAWFORD *Amana*
Goodman[®] **LABSON**
**HEATING & AIR
DUCT CLEANING**

402-520-2405

402-239-1808



Farm Credit Services of America

**CONTACT US FOR ALL YOUR
AGRICULTURAL FINANCING NEEDS**

Beatrice and Lincoln, Nebraska | 402.223.2385

Agriculture Works Here.. > FCSAmerica.com

2025-2026
Board of Directors

President

Mason Gustafson

Vice President

Ariason Snurr

Treasurer

Anna Francis

Secretary

Lori Koch

Board Members

Jeffery Davis, Dawn Hirschler,
Maria Lemus-Piccolo,
Matt McNiff, Wayne Price,
Jenny Sutphin,
& Danny Toland

Student Representative

Brielle Toland

Staff

Managing Artistic Director

Tyler J. Rinne

Associate Artistic Director

Mel Voorhis

Patron Services Manager

Grace Frahm

Costume Librarian

Lindsay Armstrong

Custodian

Nick Sutphin

Programming at Community Players
is made possible thanks to
generous support from

THE HEVELONE FOUNDATION

aact
AMERICAN ASSOCIATION
OF COMMUNITY THEATRE

Improving Communities
One Theatre at a Time

Beatrice
Area Chamber of Commerce
Gage County Tourism



Founded 1975

Community Players'
300th Production

Season 50

Community Players engages and enriches Southeast Nebraska through the arts by deepening connections, utilizing inclusive programming, and producing quality live theatre.

Office Hours

M-F 10 am - 5 pm

Box Office Hours

M-F Noon - 5 pm &
2 hours prior to shows

Costume Shop Hours

W 5:30 - 7:30pm or by appointment

Visit us at

www.beatricecommunityplayers.com



NEBRASKA ARTS COUNCIL



The Nebraska Arts Council, a state agency, has supported this program through its matching grants program funded by the Nebraska Legislature, the National Endowment for the Arts, and the Nebraska Cultural Endowment. Visit www.nebraskaartscouncil.gov for information on how the Nebraska Arts Council can assist your organization, or how you can support the Nebraska Cultural Endowment.

GIVE. ADVOCATE. VOLUNTEER.
LIVE UNITED





WE'RE
NEBRASKA
IN A BANK

Nebraska is togetherness. Forever giving back, always moving forward.

BEATRICE 523 Court Street, 402.228.3333
523 N. 6th Street, 402.228.3461 • pinnbank.com



Pinnacle Bank
MEMBER FDIC



HROCH SEED SALES

Marc Hroch, Dealer
402-223-8078

"Founded in Faith, Forged in America"



LINCOLN COMMUNITY PLAYHOUSE



TICKETS AVAILABLE AT LINCOLNPLAYHOUSE.COM

 <p>COME FROM AWAY A NEW MUSICAL AUGUST 8-10, 15-17 & 22-24</p>	 <p><i>Alice in Wonderland</i> OCTOBER 5-5 & 10-12</p>	<p><i>The Diary of Anne Frank</i> November 7-9, 13-16 & 20-23</p>	 <p>elf JR The Musical DECEMBER 12-14 & 19-21</p>
 <p>AN ORIGINAL MUSICAL MAGPIE'S SONG FEBRUARY 13-15 & 20-22</p>	 <p>PIPPIN APRIL 17-19 & 24-26</p>	 <p>Disney FROZEN JR JUNE 5-7 & 12-14</p>	

Cast & Credits

ANNIE

Book by Thomas Meehan

Original Broadway Production

Music by Charles Strouse

Directed by Martin Charnin

Lyrics by Martin Charnin

Directed by Tyler J. Rinne

Based on "Little Orphan Annie" Music Directed by Jean Spilker
By Permission of

Tribune Content Agency, LLC Choreography by Marissa Saure

Cast of Characters

Annie Esther Colbert
Oliver Warbucks Josh Erikson
Miss Hannigan Melissa Veys-Marinovich
Grace Farrell Bethany Burrow*
Rooster Hannigan John Marinovich
Lily St. Regis Ariason Snurr
Drake/Lt. Ward Callan Williams
Bundles McCloskey/Bert Healy Matt Jurgens
President Roosevelt Tim Graff
Mrs. Greer/Ensemble Michelle Frederick
Mrs. Pugh/Ensemble Jenny Sutphin
Cecille/Ensemble Dawn Hirschler
Annette/Ensemble Anne Wilson
Star-to-Be/Ensemble ClaraAnn Kirkendall
The Boylan Sisters/Ensemble Aisilynn Campbell,
Eliza Colbert, & Leena Tunink
Judge Brandeis/Ensemble Merle Jobman
Ensemble Kylie Belt, Lucas Cook*, Jonah Erikson,
Gunnar Gonzales-Dorn, Ethan Rosenthal, & Brielle Toland
Roosevelt's Cabinet Mike Fox, Morgan Fox,
Brent Frahm, Skip Philson, & Wayne Price
Molly Patricia Francis
Pepper Sophia Tunink
Duffy Marie Erikson
Kate Rosie Erikson
Tessie Autumn Marinovich
July Aubree Robinson*
Orphans Eloise Campbell*, Isabella Hirschler*,
Evelyn Jurgens*, Grace Jurgens*, Skyler Kuhlman*,
Linley McConnell, Emma Riekenberg*, & Kate Riekenberg*
Sandy Firefly Marinovich* & Chrome Marinovich*

* indicates CP Mainstage debut

Orchestra & Scenes

Orchestra

Flute & Piccolo	Carissa Hoops
Woodwinds	Ryann Johnson & Nick Thompson
Trumpet	Garrett Easley
Trombone	Jim McNeal & Paul Niedbalski
Keyboard	Bryson Cole & Cindy Lindblad
Bass	Jim Beran
Drumset/Percussion	John Spilker
Conductor	Jean Spilker

Time:

1933

Setting:

New York City

ACT I

Scene 1 - The Orphanage

Maybe	Annie
Hard Knock Life	Orphans & Annie
Hard Knock Life Reprise	Orphans

Scene 2 - Streets of New York

Tomorrow	Annie
----------------	-------

Scene 3 - Hooverville

Hooverville	Ensemble & Annie
-------------------	------------------

Scene 4 - The Orphanage

Little Girls	Miss Hannigan
Little Girls Reprise	Miss Hannigan

Scene 5 - The Warbucks Mansion

I Think I'm Gonna Like It Here	Annie, Grace, & Servants
--------------------------------------	--------------------------

Scene 6 - Streets of New York

N.Y.C.	Warbucks, Grace, Annie, & Ensemble
-------------	------------------------------------

Scene 7 - The Orphanage

Easy Street	Rooster, Miss Hannigan, & Lily St. Regis
-------------------	--

Scene 8 - The Warbucks Mansion

Why Should I Change a Thing?	Warbucks
You Won't Be an Orphan for Long	Grace, Servants, Warbucks, & Annie



Open Seven
Days a Week!

402.223.0121 | Shop Local!
827 W Court St. Beatrice, NE

Scenes & Credits

There will be a 15 minute intermission

ACT II

Scene 1 - The NBC Radio Studio

Fully Dressed Bert Healy & The Boylan Sisters

Scene 2 - The Orphanage

Fully Dressed Part 2 Orphans

Easy Street Reprise Rooster, Miss Hannigan, & Lily St. Regis

Scene 3 - The White House

Cabinet Tomorrow Annie, Roosevelt, Cabinet, & Warbucks

Scene 4 - The Warbucks Mansion

Something Was Missing Warbucks

Scene 5 - The Warbucks Mansion

I Don't Need Anything But You Grace, Drake, Servants, Annie, & Warbucks

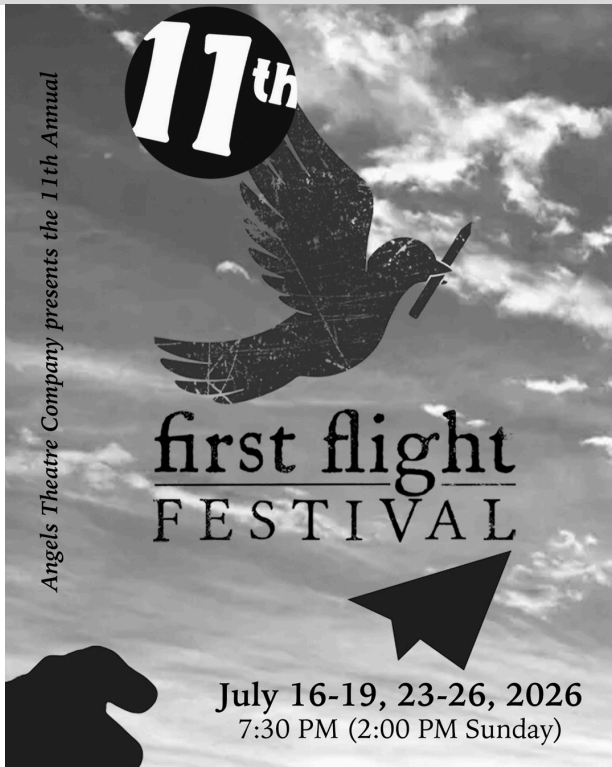
Scene 6 - The Warbucks Mansion

Same Effect on Everyone Annie

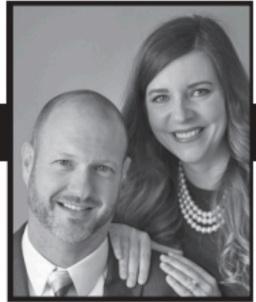
New Deal for Christmas Warbucks, Grace, Roosevelt, Annie,
Orphans, Servants, & Ensemble

Bows All

ANNIE is presented through special arrangement with Music Theatre International (MTI). All authorized performance materials are also supplied by MTI. www.mtishows.com



Fox Funeral Home & Cremation Services



CHRIS & TIMOREE
KLINGLER

Where the difference is in the Caring

- Traditional Services • Cremation • Preplanning
- Competitive Pricing • Superior Service

Chapels in Beatrice, Adams, Sterling,
and Servicing the Surrounding Areas.

402-223-4096 • www.foxfuneralhome.net



Building better communities
and brighter futures.



1FSB.BANK

BEATRICE | 560 Sargent Street | 402.230.9359

Member FDIC



Sales and Repairs
www.bigbluebikene.com
bigbluebikeco@yahoo.com



Eric Kielian
402-230-3035
719 Market St, Suite A
Beatrice, NE 68310



CASPERS construction

LET'S BUILD YOUR BUSINESS.



402-228-1905

CaspersConstruction.com

**Favorite Auto Parts Store
Thank You For Your Votes!**



Know How

Since 1972

Over 50 Years in Beatrice

Locally Owned, Nationally Known

CITY MOTOR SUPPLY

612 Bell, Beatrice • 402.228.3488



BLAZN
— GRILL WORKS —

MGRILLS.COM

AMERICAN MADE NEBRASKA MADE BEATRICE MADE

GRILLS AND SMOKERS



KINNEY MFG
INTOMETAL • PRECISEFAB • J&J WIRE

Roehrs Machinery

Helping You Grow

1512 N. 6th Street • Beatrice, Nebraska
402-228-3319 roehrsmachinery.com

 kinetic

Ultra-fast fiber helps you internet better.

Let's connect 402.228.7566

JIM'S CARPET

Satisfied Customers Are Our Best Ads

www.jimscarpet.com

Jim Oltman
Brandy Scheer
E-mail: jimscarpet@windstream.net

308 Court St.
Beatrice, NE 68310
(402) 228-3684

Production Crews

Stage Manager

Marissa Saure

Assistant Stage Managers

Ariason Snurr, Dawn Hirschler,
& Jenny Sutphin

Children's Stage Manager

Kristin Riekenberg

Rehearsal Pianists

Bryson Cole, Beth Engels,
Cindy Lindblad, & Chad Rinne

Set Design

Tyler J. Rinne

Set Construction

Rod Koch & Callan Williams

Scene Painting

Tyler J. Rinne

Props & Set Decoration

Anna Franics

Lighting Design

Brandon Clark

Electricians

Mel Voorhis, Lori Koch, & Rod Koch

Show Logo

Tyler J. Rinne

Board & Spotlight Operators

Elizabeth Philson, Mykaela Rideout,
Marissa Saure, Alex Vennman, &
Cecily Wiedel

Costume Design

Lindsay Armstrong

Costumes

Anna Erikson, Jim Beran,
Rhonda Erikson, Valerie Knobel,
Missy Marlatt, Cheryl Rabstejnek,
& Jean Spilker

Hair & Makeup

Mel Voorhis

Box Office

Grace Frahm

Front of House Volunteers

Gina Bittner, Jeremy Bittner,
Anna Erikson, Brenton Erikson,
Henry Erikson, Valerie Frahm,
Mason Gustafson, Natalie Gustafson,
Amber Kirkendall, Jim McNeal,
Shirley Montgomery, Chris Obbink,
Wanda Redd, Claire Sunderman,
Zoey Sunderman, Danny Toland,
& Josie Zukowski-Faust

**Special Thanks to Beatrice Daily Sun, Nebraska Public Media, KWBE,
KUTT, Paper Moon, & Vintage Sisters Antiques**

Any video and/or audio recording of this production is strictly prohibited.

NOTICE: So as not to disturb other patrons or the performers, patrons arriving late or that exit the auditorium during the performance will be asked to remain in the lobby until seated at an appropriate moment by the House Manager. A closed-circuit TV is set up in the lobby so you will not miss any of the performance.

No generative artificial intelligence (AI) was used during this or any Community Players production.

U-STOPTM

CONVENIENCE SHOPS

JERRY L. SHELTON
Attorney at Law

(402) 223-4088

508 Court Street, Suite 103
Beatrice, Nebraska 68310

In the spotlight:
you.



MembersOwn
CREDIT UNION

*We're here to support
your next financial act.*

MembersOwnCU.org | 402.223.4204 | 2600 Eastside Blvd

NCUA



Blackburn
TECHNOLOGIES

- Computer Maintenance & Service
- System Sales & Upgrades
- Network Administration

115 N 5TH STREET
Beatrice, NE 68310
(402) 228-8822

DOING IT. RIGHT



www.blackburntechnologies.com

Director's Note



Annie is both the final show of our 50th Anniversary Season and Community Players' 300th production overall. Those are each impressively round numbers, which is why I'd originally intended to fill this director's note with all kinds of equally interesting facts, figures, and citations from 1975 to present. But that's what museum displays and annual reports are for. Then I decided I'd write about how I got started at CP and why I'm still here, but that felt too self-referential and personal. I got started at CP and why I'm still here, but that felt too self-referential and personal. Having abandoned those authorial avenues, I was still stuck at the same stop sign: how to sum up and celebrate CP's 50th season and 300th show, while somehow linking it to this production of *Annie*?

I didn't have anything to say that felt like it would put the perfect cap on this anniversary. Nothing felt final enough. But that's what I think I like best about theatre. It's the least "final" of all art forms that I've personally experienced. A novel gets published, a painting is put in a gallery, a movie is screened, and a song is recorded. Theatre happens in the room.

I've often talked about how the finished product is not what I like best about directing or acting. There's a point somewhere in the middle where the players know their characters (and their lines) well enough that they start to open up and experiment. It's also a time where the pressure of opening night feels far enough away that a director is only concerned with what's going on in the rehearsal room and not how many technical things need to happen to make it look presentable or how many tickets need to be sold to make it profitable. It's a moment where actor, director, script, and space connect and come alive. What's come before has added up to this, and what's to come is still exciting, but just out of reach.

CP's 50th season isn't a finale, and our 300th show isn't a finish line. All of the people and all of the art that has come before has given us the confidence to be who we are and to continue welcoming new faces, ideas, and experiences into the fold. The exciting uncertainty of where we'll head next—new shows, new friends, a new facility—inspire us to look to tomorrow. And, after all, that's only a day away.

Here's to 50 more years, 300 more shows...and to tomorrow.

Tyler J. Rinne
Managing Artistic Director

Meet the Cast



**Kylie
Belt**



**Bethany
Burrow**



**Aisilynn
Campbell**



**Eloise
Campbell**



**Eliza
Colbert**



**Esther
Colbert**



**Lucas
Cook**



**Jonah
Erikson**



**Josh
Erikson**



**Marie
Erikson**



**Rosie
Erikson**



**Mike
Fox**



**Morgan
Fox**



**Brent
Frahm**



**Patricia
Francis**



**Michelle
Frederick**



**Gunnar
Gonzales-Dorn**



**Tim
Graff**



**Dawn
Hirschler**



**Isabella
Hirschler**



**Merle
Jobman**



**Evelyn
Jurgens**



**Grace
Jurgens**



**Matt
Jurgens**



**ClaraAnn
Kirkendall**



Skylar
Kuhlman



Autumn
Marinovich



Chrome
Marinovich



Firefly
Marinovich



John
Marinovich



Melissa
Marinovich



Linley
McConnell



Skip
Philson



Wayne
Price



Emma
Riekenberg



Kate
Riekenberg



Aubree
Robinson



Ethan
Rosenthal



Ariason
Snurr



Jenny
Sutphin



Brielle
Toland



Leena
Tunink



Sophia
Tunink



Callan
Williams



Anne
Wilson

When you want to experience

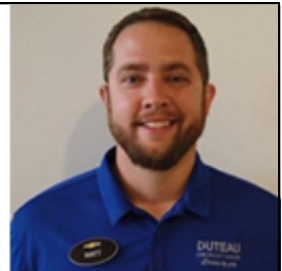
DRAMA

Go to the theatre, not the car dealership.



Driven by you.

27th & Pine Lake - Lincoln, NE



Matt Jurgens

Sales Consultant
402-239-5670

mjurgens@duteau.com



WE-DESIGN

MANUFACTURING & CONSTRUCTION

We offer comprehensive construction services, from new builds to storm repairs, alongside custom manufacturing, design, welding, laser cutting, painting and assembly.

615 E Main St., Plymouth, NE
402-656-5585

www.we-design.com



VINTAGE VENUE

"A Charming Setting for the Event of Your Dreams"

620 Court Street
Beatrice, NE 68310
402.230.8389

<https://vintagevenuebeatrice.com>

K T M

KRAVIEC MAURSTAD LAW, PC, LLO

Justin Scheele
Justin's Neighborhood Meats, LLC



"Bringing people together"

Store Hours:
Tues-Fri: 9am-7pm
Saturday: 8am-5pm
Closed: Sunday & Monday

1725 North 6th
Beatrice, NE 68310

STORE: 402.230.3275
CELL: 402.806.9066
Scheele.justin@gmail.com

Justinsmeats.com



Security
First
Bank

A relationship you can count on.

www.security1stbank.com

BEATRICE • CLATONIA • CORTLAND • BLUE SPRINGS • LINCOLN

Scheer
QUALITY FURNITURE

*Quality, Selection and Service
at Great Prices!*

Ron & Brandy Scheer

116 N 5th Street
Beatrice, NE 68310

(402) 228-4085

scheerqualityfurniture.com
scheerqualityfurniture@gmail.com



PLAZA RIDGE DENTAL
for the smiles in your world

Jason C. Roche, D.D.S.
Krista K. Haake, D.D.S.

Phone: 402.223.4140

110 Eastside Boulevard, Suite A
Beatrice, NE 68310



JONESGROUP

INSURANCE | FINANCIAL SERVICES

**HOME • AUTO • BUSINESS
FARM • LIFE • HEALTH**

Where Knowledge is the Difference



402-223-4247 • 601 N. 6th St. • Beatrice
www.jones-ins.com

Annie Bios

Kylie Belt (Ensemble) returns to the stage after last seen as an Ancestor in *The Addams Family* at CP and also appeared on stage at Beatrice High School in *Dirt*, *Anne of Green Gables*, *Once Upon a Mattress*, and *Into the Woods*. Kylie recently graduated from Beatrice High School and now works at Sky High Learning Center and St. John's Lutheran Church.

Bethany Burrow (Grace Farrell) makes her debut at Community Players in *Annie*, however she has previously acted elsewhere in *The Murder Room*, *Jack and the Giant*, *The Lion, the Witch, and the Wardrobe*, and *Charlie and the Chocolate Factory*. Bethany is a stay at home mom and her favorite part of the rehearsal process has been getting to know the cast and crew.

Aisilynn Campbell (Boylan Sister/Ensemble) is back for her second show at CP having made her debut earlier this season in *Hadestown: Teen Edition*. She is going into her senior year at Lewiston Consolidated where she has performed in *Radium Girls*, *Oz*, and *Promageddon*. Aisi works at Beatrice Movies. "Once I go to college I want to study theater arts & script writing and maybe make it to Broadway someday."

Eloise Campbell (Orphan) is back for her second show at Community Players after making her debut as Dwarf in *The Lion, the Witch, and the Wardrobe*.

Eliza Colbert (Boylan Sister/Ensemble) was last seen on the CP stage as Eurydice in *Hadestown: Teen Edition* and Ensemble in *The Sound of Music*. She attends Tri County High School. "I love everything music-related, including writing and playing my own songs. I am so blessed to work with such a talented cast!"

Esther Colbert (Annie) returns to CP and was last seen as Lady in Waiting in *The Somewhat True Tale of Robin Hood*, Lucy in *The Lion, the Witch, and the Wardrobe*, and Brigitta in *The Sound of Music*. She is a 6th grader at St. Paul's in Plymouth. She loves CP because "it's a great opportunity to meet new people and have a better experience in acting, dancing, and singing."

Lucas Cook (Ensemble) is appearing in his first Mainstage production at CP after being last seen in our Stage Door programming as Prince John in *The Somewhat True Tale of Robin Hood*, Narcissus in *You Go, Goddess!*, and Edmund in *The Lion, the Witch, and the Wardrobe*. He is a 7th grader at Beatrice Middle School.

Jonah Erikson (Ensemble) is back at CP after last being seen as Marlin in *Finding Nemo, JR.*, Friedrich in *The Sound of Music*, and Old Deuteronomy in *CATS: Young Actors Edition*. He was also in *Into the Woods*, *Once Upon a Mattress*, and *Mary Poppins* at Beatrice High School where he will be a senior in the fall. Jonah is also a regular behind the scenes in stage management and light and sound board operation. He works at the Beatrice Public Library as a Clerk. When he's not at the theatre, you can find him playing Dungeons and Dragons.



Josh Erikson (Oliver Warbucks) is no stranger to the Community Players stage. He was last seen as Judas in *Godspell*, Bob Wallace in *White Christmas*, Jean Valjean in *Les Misérables*, and Judas in *Jesus Christ Superstar* among many other productions. He is an author and his favorite part of doing theatre is having the "opportunity to work with so many talented and creative people."

Marie Erikson (Duffy) returns after being seen in many Stage Door productions including playing Lady Marian in *The Somewhat True Tale of Robin Hood*, Peach in *Finding Nemo, JR.*, and Dorothy in *Choose Your Own Oz*. This will be her third Mainstage show having been in *The Music Man* and last season's *The Sound of Music*. Marie is an upcoming 8th grader at Beatrice Middle School. "I'm honored to be a part of this show!"

Rosie Erikson (Kate) is back for her third show at Community Players appearing in *Finding Nemo, JR.* and *The Sound of Music*. Rosie is going into 3rd grade at Beatrice Elementary School. Her favorite part of doing theatre is learning her lines and spending time with friends and family!

Mike Fox (Roosevelt's Cabinet) returns to the CP stage with *Annie*, having most recently performed as Judge Turpin in *Sweeney Todd*, a Disciple in *Godspell*, and Wayne Hopkins in *Puffs*. He works at Fiserv in Client Technical Support. "I'm so happy to be in a show with my whole family! Love to Morgan, Leena, and Sophia!"

Morgan Fox (Roosevelt's Cabinet) joins us for her 18th show at CP and was last seen as Elizabeth Darcy in *Miss Bennet: Christmas at Pemberley*, Mary Debenham in *Murder On the Orient Express*, and Henrietta Leavitt in *Silent Sky*. She has also lent her creative hand behind the scenes with hair & makeup, costumes, and props. She is the Youth Services Librarian at the Beatrice Public Library.

Brent Frahm (Roosevelt's Cabinet) returns to the Community Players stage after almost 20 years away with some of his favorite performances being *Hello, Dolly!* (2009), *Noises Off* (2007), *Kiss Me Kate* (2004), *Fiddler on the Roof* (2003), and *The Foreigner* (1993). His favorite part of doing theatre at CP is rekindling friendships. "It's nice to get back to the Community Players stage."

Patricia Francis (Molly) is back for her 3rd show at Community Players having been in this season's *Finding Nemo, JR.*, and last year's *The Sound of Music*. She is a 3rd Grader at St. Paul's Lutheran School. "Practice as you perform, and learn as you go."

Michelle Frederick (Mrs. Greer/Ensemble) returns for her second CP show after making her debut as Diana Ingram in *Quiz* earlier this year. Michelle has also worked on many shows at Nebraska Wesleyan including acting in *Stage Door* and *Waiting for Godot*, stage managing *Jake's Women* and *Single and Proud*, and directing *Matt & Sara* and *Dreamwalk*. She works as a Field Claim Resolution Specialist at Liberty Mutual. "CP has been such a welcoming home and I feel so lucky to be working with so many amazing people!"

Gunnar Gonzales-Dorn (Ensemble) returns to CP after last being seen as a Worker in *Hadestown: Teen Edition*, Ensemble in *The Sound of Music*, and an Ancestor in *The Addams Family*. He attends Beatrice High School where he performed in *Into the Woods* and will be in *Grease* in the fall. He works as a Service Accompanist at St. John's Lutheran Church.

Tim Graff (President Roosevelt) is onstage for his third show having played The Monster in *Young Frankenstein* (2014) and Caiaphas in *Jesus Christ Superstar* (2013). He has also helped out with set construction and ushering for many shows at CP. Tim is a farmer. His favorite part of doing theatre is "seeing words on paper spring to life."



LOCALLY OWNED • EXPERIENCED • COMMERCIAL • RESIDENTIAL

KRISTA WIEDEL
BROKER/OWNER
402-239-9948

Ready to Sell?
List with us!



Dawn Hirschler (Cecille/Ensemble) returns to the CP stage after being last seen in *Sweeney Todd*, *The Sound of Music*, and *The Addams Family*. Dawn also stage managed *Quiz* earlier this year and serves as a CP Board Member. She is a Kitchen & Bath Designer at Mead Lumber. "I'm so excited to share this show with my kids and the rest of this talented cast! I want to thank my family and friends for supporting me and the kids in all that we've been involved in. And thank you to the cast and crew for working with me, the kids, and our busy schedules!"

Isabella Hirschler (Orphan) is back for her 3rd show at CP with her previous shows being the Stars of Summer productions of *CATS: Young Actors Edition* and *Finding Nemo, JR.* She is in the 4th Grade at St. Paul's Lutheran and loves dancing, singing, drawing, and animals.

Merle Jobman (Judge Brandeis/Ensemble) returns for his 17th production at CP and was seen as Judge Rivlin in *Quiz* earlier this season with some other favorite performances being Buffalo Bill Cody in *Annie Get Your Gun* and Vincent Cummings in *Art of Murder*. He has also stage managed 16 other Community Players productions. He is a Foster Grandparent at St. Joseph's School and is happy to be working with such an experienced cast! He hopes you enjoy the show.

Evelyn Jurgens (Orphan) is making her debut at Community Players, but has previously performed in *Disney's Dare to Dream* at Nebraska Communities Playhouse. She is going into 4th grade at Norris Intermediate School. Evelyn likes being able to act and sing with her friends.

Grace Jurgens (Orphan) joins us for her first time at Community Players. Grace attends Norris Elementary School and will be in second grade in the fall. Her favorite part of doing theatre is performing with friends.

Matt Jurgens (Bert Healy/Bundles McCloskey) returns to the CP stage for his 21st show, most recently playing Leo Bloom in *The Producers* (2017) and The Baker in *Into the Woods* (2015). He also directed two Young Adult Theatre productions - *Avenue Q* (2013) and the very first YAT show, *Edges* (2009). Matt is a Salesman at DuTeau Chevrolet. His favorite part of theatre is the community that is built within the cast. "Most of my best friends were made doing theater. I'm very excited to be doing what I love with my daughters, Evelyn and Grace."

ClaraAnn Kirkendall (Star-to-Be/Ensemble) is back onstage for her 11th show, most recently performing in *Hadestown: Teen Edition*, *Finding Nemo, JR.*, and *The Sound of Music*.

Skyler Kuhlman (Orphan) is joining for her first Mainstage production, but fifth show at Community Players having performed in *Finding Nemo, JR.*, *CATS: Young Actors Edition*, *Space Princess Wars*, and *Singin' in the Rain JR.* She also played Queen Esther in *Malice in the Palace* at St. Paul's Lutheran School. Skyler is going into 7th grade at Beatrice Middle School. She is a dancer, plays the French Horn, and likes to sing and make jewelry.

Autumn Marinovich (Tessie) is back after making her debut in last season's *The Sound of Music*. She has also performed in *The Little Mermaid* and *Mary Poppins* at Norris High School. Autumn will start 5th grade in the fall at Norris Intermediate School. She loves being able to do Annie with all her best friends and whole family including her dog! "I've done 4 years of dance and this is my fifth so I was born ready to dance as easily as you know how to eat."

John L. Marinovich (Rooster Hannigan) joins us again for his sixth onstage show after appearing most recently in *The Sound of Music*, *Into the Woods*, and *One Flew Over the Cuckoo's Nest*. He directed *The Three Musketeers* and helped with fight choreography for many other shows at Community Players. John also has performed in shows at Nebraska Rep, Montana Rep, and Flatwater Shakespeare. He works for the Nebraska Department of Insurance as an Insurance Complaints Division Administrator. He's excited to get to share the stage with his wife, daughter, and pup! "Theatre combines all other artistic endeavors to help us explore together what it means to be human."

Melissa Veys-Marinovich (Miss Hannigan) returns for her third onstage performance at Community Players, previously acting in *Into the Woods* (2015) and *Les Miserables* (2014). Melissa also performed in *Present Laughter* and *Antigone* at the University of Montana, *Macbeth* and *Female Transport* at the University of Nebraska-Lincoln, and *A Christmas Carol* at the Lied Center. She works for Nebraska Game and Parks Commission Wildlife Division and also trains dogs for competitions. "So excited to be returning to the stage after a 10-year break and getting to share this moment with my daughter, Autumn, husband, John, and dogs, Chrome & Firefly! So proud to bring laughter and joy to the community through performance. Special thanks to CP for giving us this opportunity."

Linley McConnell (Orphan) is back for her second show at CP having made her debut last year in *The Sound of Music* as Marta and will be in our upcoming *Anastasia: The Musical (Youth Edition)*. She has also played Mary and a News Reporter in church programs. Linley is a 5th grader at Freeman Public Schools. "I love singing, dancing and performing on a stage! I have participated in my school talent show the last 3 years. I also am excited because last summer I started learning how to play the piano!"

You Never Get A Second Chance To
Make A First Impression

That's why companies turn to us for help in designing their company's materials. From full-color brochures to single color business cards.

We can design your printed piece to give your company the first impression you deserve.



223-3666

Arbor Ink

1703 N 9th Street • Beatrice and 1102 Broadway • Marysville, KS

Skip Philson (Roosevelt's Cabinet) is onstage for his fifteenth Community Players show. His first production was as Bob Cratchit in *The Stingiest Man in Town* in 1980 and his most recent as Mr. Maraczek in *She Loves Me* in 2023. "Although 'retired' after *She Loves Me*, I still keep coming back for more!"

Wayne Price (Roosevelt's Cabinet) returns for his tenth show at Community Players, but his first musical having only acted in plays previously. Most recent credits include *Peter and the Starcatcher*, *Clue: On Stage*, and *In-Laws, Outlaws, and Other People (That Should Be Shot)*. Wayne currently serves on the CP board of directors. He works for the Nebraska Rural Electric Association as the Director of Public Affairs. His favorite part of doing theatre is the memorization of his lines. (Check out our stickers that prove it!)

Emma Riekenberg (Orphan) is making her debut with *Annie*. Emma has previously acted at Homestead Baptist Church in *Go Go Jonah* and *In a Galilee Far Far Away*. She is homeschooled and will start 3rd grade next year. "This is my first CP production. I have enjoyed it and learned a lot."

Kate Riekenberg (Orphan) joins us for her first show at Community Players. She has performed onstage in *Go Go Jonah* and *In a Galilee Far Far Away* at Homestead Baptist Church. Kate is homeschooled and will start 1st grade in the fall. Her favorite part of doing theatre is the choreography and she has had a lot of fun throughout rehearsals.

Aubree Robinson (July) was last seen as a Fawning Lady in *The Somewhat True Tale of Robin Hood*, a Woodland Creature in *The Lion, the Witch, and the Wardrobe*, Sea Turtle/Jellyfish in *Finding Nemo, JR.*, and Ensemble in *CATS: Young Actors Edition*. She is a 6th grader at Beatrice Middle School and has her own business selling pens, keychains, and bracelets. She is excited to be in *Anastasia: The Musical (Youth Edition)* this July at Community Players.

Ethan Rosenthal (Ensemble) returns for his 10th show at CP and was last seen as Lucas Beineke in *The Addams Family*, Harold Pudding, Mad Hatter, & Knave in *Alice By Heart*, Ted in *Peter and the Starcatcher*, and has been part of many productions for the Tri-County One-Act team. Ethan recently graduated from Tri-County High School and works at Beatrice Movies as a Doorman. "I hope everyone's ready for a heartfelt adventure."

Ariason Snurr (Lily St. Regis) is no stranger to both on and off the CP stage. She was last seen in *Puffs*, *Clue: On Stage*, and *The Hunchback of Notre Dame*. She also directed the Young Adult Theatre production *Alice By Heart* and has lent her hand to stage management, scenic design, and set decoration. She also serves as Vice President on the Community Players Board. Ariason works at Schoo Middle School as a 6th Grade Humanities teacher. "Thank you to my husband for his unwavering support and to my boys for their love."

Jenny Sutphin (Mrs. Pugh/Ensemble) is back for her 14th show at CP with some notable favorites being *Miss Bennet: Christmas at Pemberly*, *The Sound of Music*, *Elf: The Musical*, and *The Three Musketeers*. She has also volunteered for many behind the scenes roles including costumes, stage managing, ushering, and more. Jenny also is in her third year as a Board Member for Community Players. She works as an Account Manager at Fiserv. "What is brunch? Is it a time? Is it menu specific? Does it replace breakfast AND lunch? Everyone has an opinion, and no opinion is completely the same. Discuss amongst yourselves."

Brielle Toland (Ensemble) returns again after she was last seen at CP in this season's Young Adult Theatre production of *Hadestown: Teen Edition* and last year's *The Sound of Music* and *The Addams Family*. She has also recently appeared in *Little Women* at Beatrice High School where she just graduated. Brielle is excited to continue her journey on and off the stage.

Leena Tunink (Boylan Sister/Ensemble) joins us once again with memorable shows being *Hadestown: Teen Edition* and *The Sound of Music*. She will be a senior at Beatrice High School next year and was recently cast as Sandy in their Fall production of *Grease*. Leena works at Kaw Valley. This is Leena's 19th show at CP and 5th show where she's one member of a trio! Her favorite part of doing theatre is getting to hang out with her friends and be on her favorite place: the stage.

Sophia Tunink (Pepper) is back for her 13th show at CP. She was last seen as Will in *The Somewhat True Tale of Robin Hood* and Susan in *The Lion, the Witch, and the Wardrobe*. This is her second Mainstage production after *Elf: The Musical*. Sophia will be going into her freshman year at Beatrice High School. Sophia notes, "I love working here and I would never act anywhere else but Broadway, that would be insane!!!!"

Callan Williams (Drake/Lt. Ward) returns for his 48th production onstage at Community Players with some notable favorites being *Rumors*, *To Gillian on Her 37th Birthday*, *Peter and the Starcatcher*, *The Odd Couple*, *Veronica's Room*, & *Quiz*. He has also spent countless hours behind the scenes building sets, serving on the board, ushering, & set painting. Callan works as a Maintenance Manager at Hybrid Turkeys. "I am really glad I am a part of this. The kids' excitement about theater is a joy to see. Also, great to be sharing the stage with many of my past castmates. Thanks to my wife, Cindy, for her support."

Anne Wilson (Annette/Ensemble) is back at Community Players after performing in last season's *The Sound of Music* and both the 2023 and 1999 productions of *The Music Man*. Anne works at an IT Help Desk. "Leaping Lizards, I am fully dressed with a smile to be a part of this amazing production."



BAGBY TRAVEL AGENCY

516 Ella • Beatrice, NE 68310

(402) 228-3391

www.bagbytravel.com



UNFORGETTABLE TOURS

These are the things to call home about!
Amazing excursions that will leave you with
exciting memories!



BEST PRICE GUARANTEE

We find you the best deals and experiences to
make your trip as great, free as possible!



BOOK WITH CONFIDENCE

Locally owned and operated. Put a face your
travel agent, focused on your satisfaction!

Tyler J. Rinne (Director) is the Managing Artistic Director at Community Players, where he has directed over 50 shows, including *Quiz*, *Misery*, *Clue: On Stage*, *Shipwrecked! An Entertainment*, *The Lion in Winter*, and the youth productions *The NeverEnding Story*, *Charlotte's Web*, and *Singin' in the Rain, JR.* Tyler has written multiple shows for the stage, including the published plays *Forest Paths* (YouthPLAYS) and *The Rest of the West* (Pioneer Drama). An award-winning actor, favorite roles include appearances in *Peter and the Starcatcher*, *Popcorn Falls*, *The 39 Steps*, *Moonlight & Magnolias*, and *Completely Hollywood (Abridged)*. He is the Nebraska State Representative for the American Association of Community Theatres (AACT).

Jean Spilker (Music Director) is happy to be music directing this production of *Annie*. Jean has appeared in numerous shows at CP including *My Fair Lady*, *Love, Linda*, and both productions of *The Sound of Music*. In addition, she directed our production of *The Music Man* and has music directed several shows such as *Beauty and the Beast*, *Annie Get Your Gun*, and *Godspell*. Jean has been a staple of Community Players since her debut in 1989, giving her time and talents to nearly every department from costuming, props & set decoration, stage management, serving on the board of directors, front of house volunteering, working the box office, and playing in the orchestra.

Marissa Saure (Stage Manager) is back at CP having appeared most recently in this season's *The Odd Couple* and last year's *The Addams Family* and *Miss Bennet: Christmas as Pemberley*. She has helped behind the scenes for many shows here including choreographing *Hadestown: Teen Edition* and stage managing *The Sound of Music*. Marissa also performs around Lincoln including in *Something Rotten* at Nebraska Communities Playhouse, *Cabaret* and *Little Shop of Horrors* at Lincoln Community Playhouse and *Newsies* at Pinewood Performing Arts. She is a Training and Events Manager at CIP Communities in Lincoln. "Happy 300th show, CP! I'm happy and thankful to be on the creative and collaborative journey that has been *Annie*! Thank you to the talented cast and crew for the hard work, laughs, and dedication. Special shout-out to our Orphans who amaze us every *Hard-Knock Life*, and to Tyler—witnessing you create always brings me joy."

LINCOLN'S SYMPHONY ORCHESTRA

EDWARD POLOCHICK, MUSIC DIRECTOR

2025-2026 SEASON



FEB 13 EXPERIENCE THE INTRIGUE
MAR 06 THE SPACE BETWEEN
APR 10 POWERFUL PERSEVERANCE

APR 11 RIVER CITY PUPPETS
APR 24 THE MUSIC OF HARRY POTTER
MAY 02 INSPIRATION & COURAGE

LINCOLNSYMPHONY.COM | (402) 476-2211

Smarter Insurance for Agriculture.®



Pete Spilker
Jake Sykes
Darin Baehr
3216 N. 6th
Beatrice, NE
402.228.4232



Farm & Ranch | Crop | Commercial Ag | Workers' Comp | Succession Planning

Farm Bureau Property & Casualty Insurance Company,* Western Agricultural Insurance Company,* Farm Bureau Life Insurance Company*/West Des Moines, IA. Individual must be licensed with issuing company to offer insurance products. *Company providers of Farm Bureau Financial Services. PR-PB-A (12-23)



711 Court St.
Beatrice, NE. 68310
402-806-4100
www.nvbeatrice.com



GIFTS
YOGA
VENUE
SAUNA
MASSAGE
NUTRITION



2305 N 6th Street
Beatrice, NE 68310
Ph: 402-806-4202

Mon - Fri: 5:00a-9:00p
Sat - Sun: 6:00a-8:00p



**Overhead Doors - Operators -
Seamless Gutters -
Sales - Service - Installation**



**5320 West State Hwy. 4 - Beatrice, NE
402-228-1276 - BlueValleyDoor.com**

FREE ESTIMATES



**100+ Mile Radius
Service Area**

Your trusted choice for
Commercial, Agricultural & Residential doors!



GAGE COUNTY INVITES YOU TO

EXPLORE
VISITBEATRICE.COM

402.205.3292  



Community Players, Inc.

2025-2026 First Nighter Patrons

Diamond Patrons (\$2,500)

Marilyn Coffin

John & Vicki Rinne

Platinum Patrons (\$1,200)

Anonymous

Elizabeth Claassen

Trudy Dueck

Shirley Montgomery

Gold Patrons (\$650)

Dr. Walt & Rosalie Duffy

Brent & Valerie Frahm

Roger & Karen Girch

Mason & Natalie Gustafson

Phil & Judi Knowles

Charles & Laureen Riedesel

Tyler Rinne & Marissa Saure

Krista Wiedel

Southwick Chiropractic

Silver Patrons (\$300)

Charles & Donna Bentjen

Twyla Bray

Brenda Carnes

Jeff & Brenda Davis

Dawn Hirschler

Rod & Lori Koch

Barrie & Ann Luers

Marilyn McMahon

JJ Purdom

Barbara Remmers

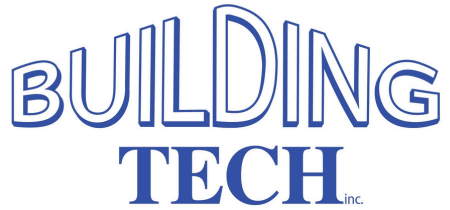
Duane Ruh

Dianne Springer

Mary Beth Tuttle

Callan & Cindy Williams

Kraviec Maurstad Law, PC, LLO



First Nighter Patrons (\$200)

Darryl Baker

Gary Barnard

Erna Beach

Norman & Ramona Boone

Vicky Boone

Marilee Brinkmeyer

Vicki Cain

Brandon Clark

RJ & Edie Crandall

Jan Dalke Anderson

Myron Dorn

Terry & Ella Doyle

Dee Enevoldsen

Dave & Lisa Eskra

Mark & Angy Essam

Tim & Mary Graff

Joel & Donna Gustafson

Sheryl Harrington

Connie Hartig

Jill Helmke

Rich & Linda Hovendick

Merle & Jane Jobman

Patty Kaufman

Allen & Deb Langdale

Mickey Larkins

Oliver & Zita Lomax

Chad & Courtney Lottman

Susan McLain

Robert & Dorothy McLellan

Doug & Joanne Neemann

Mari-Ann Pesek

Wayne & Heidi Price

Chuck & Cheryl Rabstejnek

Dwight & Barbara Schmidt

Roselyn Shaffer

Steven Shively

Noah & Ariason Snurr

Scott & Jean Spilker

Gary & Muriel Thompson

Doris Thornburg

Jason & Tamara Venneman

Judith Vrbka

Janice Waltke

Greg & Louann Weaver

Tyler & Beth Weishahn

Stacy Williams

Dorothy Zimmerman

Interested in being featured in next season's programs or thanked on the Lobby TV? Learn more about becoming a First Nighter under Coming Attractions at the back of the program!

**MEET THE STARS
OF OUR SHOW AT**

exmark.com



Beatrice, NE



HOMESTEAD HARMONIZERS

Come Sing With Us!

Mondays - 7:30 PM

First Presbyterian Church - Beatrice



Let Us Sing For You!
Arrange a Performance

www.homesteadharmonizers.com

Follow us on Facebook

kw KRACKE
REAL ESTATE GROUP Powered by
KELLERWILLIAMS.



402-432-3462
jayne@donaldkracke.com

www.krackerealestate.com



Summer Hours: April - September

Wednesday - Saturday 10:00 a.m. - 4:00 p.m.

Winter Hours: October - March

Thursday - Saturday 10:00 a.m. - 4:00 p.m.



101 North 2nd Street

Beatrice, Nebraska, 68310

Phone: 402-228-1679

Email: info@gagecountyhistory.org

Website: gagecountyhistory.org

From November 25, 2025, to March 26, 2026, see the 50th anniversary exhibit of Beatrice Community Players!

Coming Attractions

COMMUNITY PLAYERS' 2026-2027 SEASON

The Mainstage season will kick off with *My Fair Lady*, returning to our stage after a 26-year absence. The season continues with *Baskerville*, a unique Sherlock Holmes story, adapted from "The Hound of the Baskervilles" by prolific playwright Ken Ludwig. *Shrek: The Musical* will be our big February production next season, bringing to life the hilarious and offbeat animated classic. To balance that out with a mature, family drama, the next show is *August: Osage County*. The final show of the Mainstage season is *Suite Surrender*, a story of two divas who have to share a Florida hotel suite, much to their consternation and the destruction of everything around them!

More excitement awaits in our Stage Door shows, kicking off with Stars of Summer's production of *Anastasia: The Musical (Youth Edition)* and the Young Adult Theatre show *She Kills Monsters*. Acting Up will produce *The Little Prince*, an adaptation of the timeless children's book, and *A Thousand and One Nights of Reality Television*, a silly send-up of fairy tales and modern TV.

You can find out more about all of these great shows on our website. Season Tickets are available now, and offer a 20% discount when compared to buying General Admission. You won't want to miss a single show next season, so purchase your Membership now!

ANASTASIA | Stars of Summer

Production Dates: July 9-12

Her past is a mystery. Her future is an adventure. From the twilight of the Russian Empire to the glitz of Paris, a brave young woman sets out to discover the mystery of where she came from. Pursued by ruthless Soviets determined to silence her, Anya enlists the aid of a dashing con man and a lovable ex-aristocrat to join her on an adventure to find the meaning of home, love, and family.

SHE KILLS MONSTERS | Young Adult Theatre

Audition Dates: June 8 & 9

Production Dates: July 30 - August 2

All Agnes Evans has left of her teenage sister is her Dungeons & Dragons notebook, a place where Tilly created imaginary worlds to find her only refuge. But when the book launches Agnes into an action-packed journey of discovery and adventure, she must activate her inner geek to defeat the homicidal fairies, nasty ogres, and 90s pop culture within!





Rediscover your moving moments

Robotic-assisted precision in knee replacement

Ask Dr. Weichel how this technology can help you create more moving moments by calling 402-228-5417.

Dr. Derek Weichel
Orthopedic Surgeon



www.BeatriceCommunityHospital.com