

**Indoor KEENULDAH60AA**

**Outdoor KEENHYDHP60AA**

**Air Handler Heat Pump System**

Location:	Approval:
Engineer:	Date:
Submitted to:	Construction:
Submitted by:	Unit #:
Reference:	Drawing #:



INDOOR SPECIFICATION		
ESP (in WG)	0 ~ 0.8	
Indoor Air Flow (Turbo/H/M/L/Si) (CFM)	1801.1 / 1648.1 / 1500.9 / 1236.1 / N/A	
Indoor Noise Level (Turbo/H/M/L/Si) (dBA)	60.0 / 57.0 / 54.5 / 37.0 / N/A	
Dimension (W×D×H)	inch	21.50 x 21.50 x 55.94
	mm	546.0 x 546.0 x 1421
Package (W×D×H)	inch	59.84 x 25.00 x 31.10
	mm	1520 x 635 x 790
Net/Gross Weight	lbs	188.05 / 238.32
	kg	85.3 / 108.1

OUTDOOR SPECIFICATION		
Compressor Type	TWIN-ROTARY	
Compressor Model	ETPQ480D66UMU1	
Refrigerant	R454B	
Refrigerant Oil Charge (mL)	1300	
Refrigerant Oil	VG75	
Outdoor Air Flow (Max) (CFM)	2648.7	
Outdoor Noise Level (dBA)	64.5	
Dimension (W×D×H)	inch	37.48 x 16.34 x 52.48
	mm	952.0 x 415.0 x 1333.0
Package (W×D×H)	inch	43.11 x 19.49 x 58.27
	mm	1095 x 495 x 1480
Net/Gross Weight	lbs	242.95 / 275.13
	kg	110.2 / 124.8

EFFICIENCY			
Cooling		Heating	
SEER2	17.5	HSPF2-4	9.5
EER2	12.0	COP	3.35

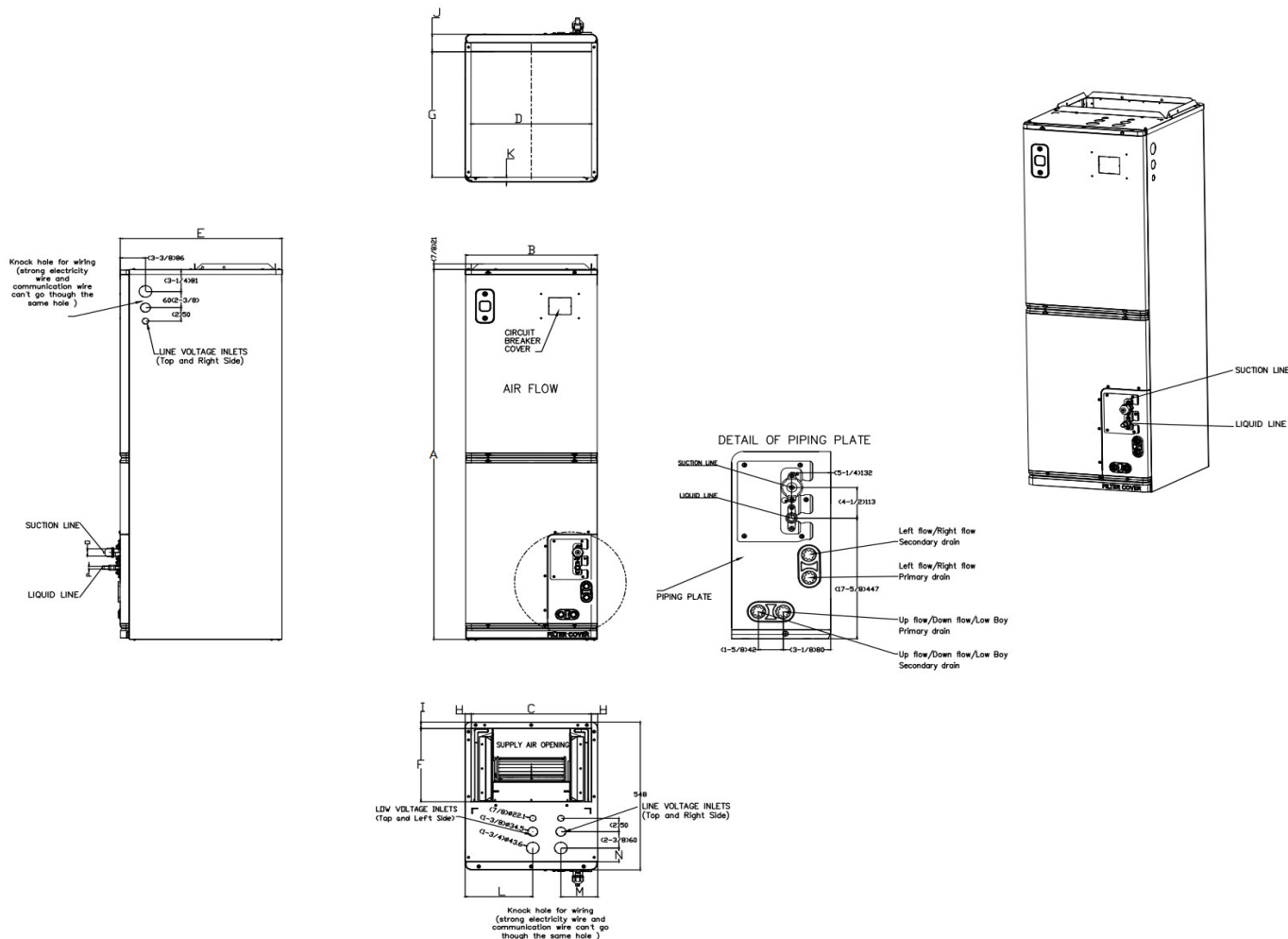
PERFORMANCE of Cooling	
Cooling (Btu/hr)	
Rated Capacity	54000
Min/Max Capacity	11400 ~ 60000
Moisture Removal (L/h)	6.02
Standard Operating Range (°F/°C)	-22 ~ 122 (-30 ~ 50)
Rated Cooling Conditions:	Indoor: 80°F DB / 67°F WB Outdoor: 95°F DB / 75°F WB

PERFORMANCE of Heating	
Heating (Btu/hr)	
1. @ 47°F Rated	55000
2. @ 47°F Min/Max Capacity	8600 ~ 60000
3. @ 17°F Rated	35000
4. @ 5°F Rated: Capacity / COP	54000 / 1.9
5. @ 5°F Max: Capacity	54000
Standard Operating Range (°F/°C)	-22 ~ 75 (-30 ~ 24)
1. Rated Heating Conditions:	Indoor: 70°F DB / 60°F WB Outdoor: 47°F DB / 43°F WB
2. Rated Heating Conditions:	Indoor: 70°F DB / 60°F WB Outdoor: 17°F DB / 15°F WB
3. Heating Conditions, Compressor Operating at Max. Frequency	Indoor: 70°F DB / 60°F WB Outdoor: 5°F DB / 5°F WB

ELECTRICAL	
Indoor Power Supply	115/208/230V, 60Hz, 1Ph
Indoor MCA 115V / (208/230V)	14.5 / 10
Indoor MOP	15
Outdoor Power Supply	208/230V, 60Hz, 1Ph
Outdoor MCA	40
Outdoor MOP	40
Communication Wiring	AWG 20-2
Compressor RLA	31
Outdoor Fan Motor RLA	1.2
Outdoor Fan Motor W	85
Indoor Fan Motor RLA	8
Indoor Fan Motor W	N/A
System Power Input @ Cooling (W)	4851 (1540 ~ 6720)
System Power Input @ Heating (W)	5015 (775 ~ 5720)
MCA: Min. circuit amps (A)	MOCOP: Max. over current protection (A)
RLA: Rated load amps (A)	W: Fan motor rated output (W)

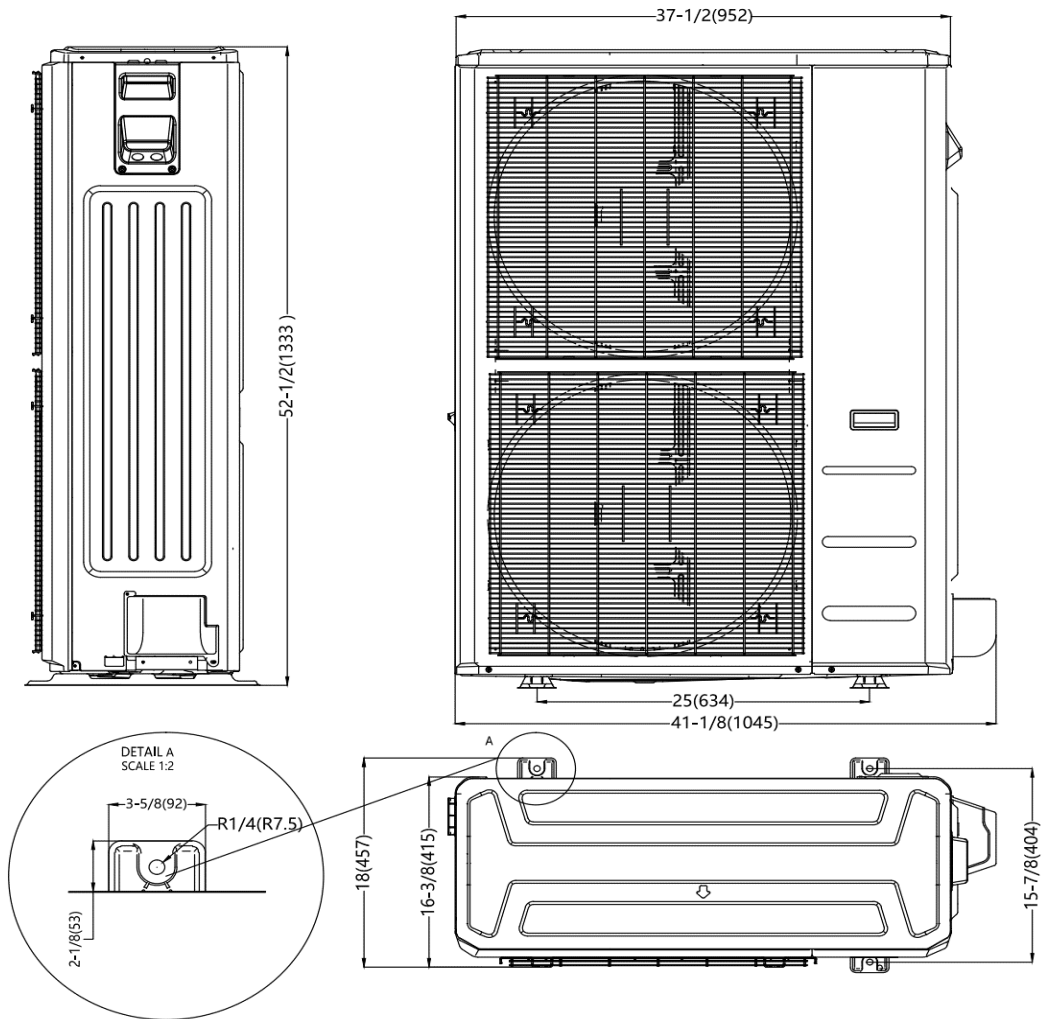
PIPING	
Throttle type (Indoor)	EXV
Throttle type (Outdoor)	EXV
Liquid Size	9.52mm (3/8in)
Gas Size	19mm (3/4in)
Max. Piping Length (ft/m)	246 (75)
Max. Height Difference (ft/m)	98.4 (30)
Max. Pre-charged Length (ft/m)	24.6 (7.5)
Refrigerant Pre-charged Amount (oz/kg)	183.42 (5.2)
Additional Charge of Refrigerant ((oz/ft) / (g/m))	0.7 (65)
Connection Method	Flared

Indoor Unit Dimension

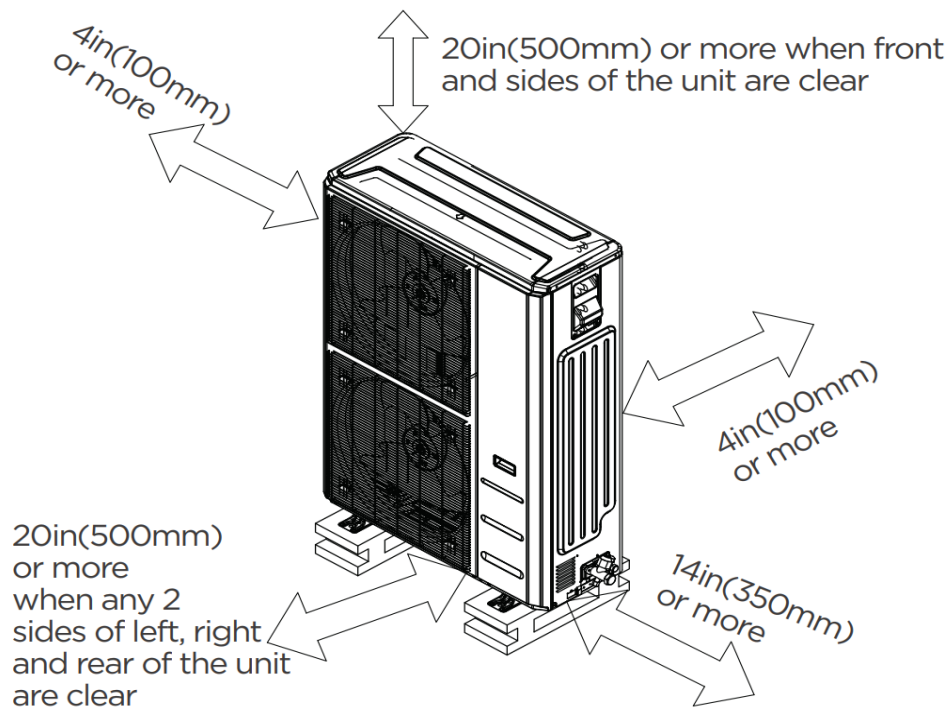


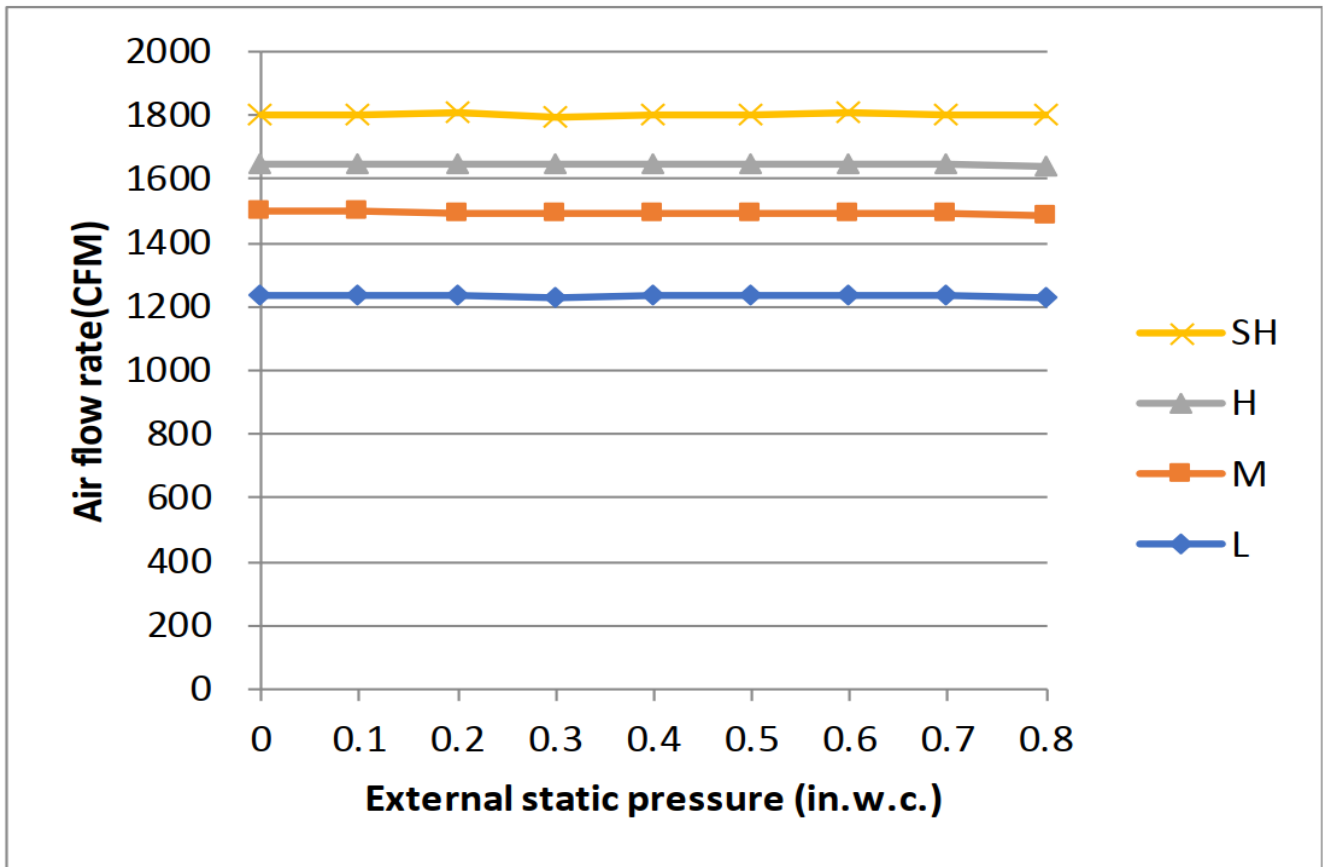
Dimensions		Model(Btu/h)		18K/24K		30K/36K		48K/54K	
		inch	mm	inch	mm	inch	mm		
A	Model Height	49-3/4	1263	54	1371	56	1421		
B	Model Width	14-1/2	368	17-1/2	445	21-1/2	546		
C	Supply Air Opening Width	12-7/8	328	16	405	19-7/8	506		
D	Return Air Opening Width	13	331	16	407	20	509		
E	Model Depth	21-1/2	546	21-1/2	546	21-1/2	546		
F	Supply Air Opening Depth	10-5/8	271	10-5/8	271	10-5/8	271		
G	Return Air Opening Depth	18-1/4	465	18-1/4	465	18-1/4	465		
H	Supply Air Opening Clearance	7/8	22	7/8	22	7/8	22		
I	Supply Air Opening Clearance	1	24	1	24	1	24		
J	Return Air Opening Front Clearance	2-1/2	65	2-1/2	65	2-1/2	65		
K	Return Air Opening Back Clearance	3/4	18	3/4	18	3/4	18		
L	Top cover knock hole	/	/	9	229	10-7/8	275		
M	Top cover knock hole	4-1/2	113	4-7/8	124	5-1/8	131		
N	Top cover knock hole	2	51	2	51	1-5/8	41		
O	Refrigerant piping flareconnection(gas)	3/4	19	3/4	19	3/4	19		
P	Refrigerant piping flareconnection(liquid)	3/8	9	3/8	9	3/8	9		

## Outdoor Unit Dimension



## Installation Instruction For Outdoor Unit





**Features**

- Multi-position installation: horizontal (left or right), vertical (up or down)
- 115/230V voltage compatible for IDU
- Aluminum Coil
- Constantly Air Flow system up to 1.0 In.W.G
- Optional Auxiliary heat kit up to 25kW
- Easy Maintenance
- Multiple control options available:
  - Two way communication wired controller:120N(X6)
  - Two way communication wired controller with built-in WiFi: 120N(X6W)
  - Wireless remote controller
  - Third-Party 24V Thermostat
- Adaptive Control System
- High efficiency up to 19 SEER2, 12.5 EER2, 10.8 HSPF2
- 100% heat output at -13F\*
- Chassis heater and crankcase heater equipped as standard

\* For MVDBM-36HWFN10-WB3-D pairing with MOX630-36HFN10-M3X, rated cooling capacity/heating capacity at -13F=100%