

Indoor KEENSTPAH24AA

Outdoor KEENHYDHP24AA

Air Handler Heat Pump System

Location:	Approval:
Engineer:	Date:
Submitted to:	Construction:
Submitted by:	Unit #:
Reference:	Drawing #:



INDOOR SPECIFICATION		
ESP (in WG)		0 - 0.8
Indoor Air Flow (Turbo/H/M/L/Si) (CFM)		824 / 759 / 647 / 630 / 630
Indoor Noise Level (Turbo/H/M/L/Si) (dBA)		56.5 / 56.5 / 53.5 / 51.5 / 51.5
Dimension (W×D×H)	inch	49.13 x 23.33 x 10.93
	mm	1248 x 592.7 x 277.6
Package (W×D×H)	inch	53.15 x 680 x 13.58
	mm	1350 x 680 x 345
Net/Gross Weight	lbs	127.87 / 138.89
	kg	58 / 63

OUTDOOR SPECIFICATION		
Compressor Type		ROTARY
Compressor Model		KTM240D46UKT2
Refrigerant		R454B
Refrigerant Oil Charge (mL)		620
Refrigerant Oil		VG74
Outdoor Air Flow (Max) (CFM)		1,766
Outdoor Noise Level (dBA)		59
Dimension (W×D×H)	inch	35.04 x 13.46 x 26.5
	mm	890 x 342 x 673
Package (W×D×H)	inch	39.17 x 15.67 x 29.13
	mm	995 x 398 x 740
Net/Gross Weight	lbs	101.41 / 109.13
	kg	46 / 49.5

EFFICIENCY			
Cooling		Heating	
SEER2	17.5	HSPF2-4	9.2
EER2	10.8	COP	3.45

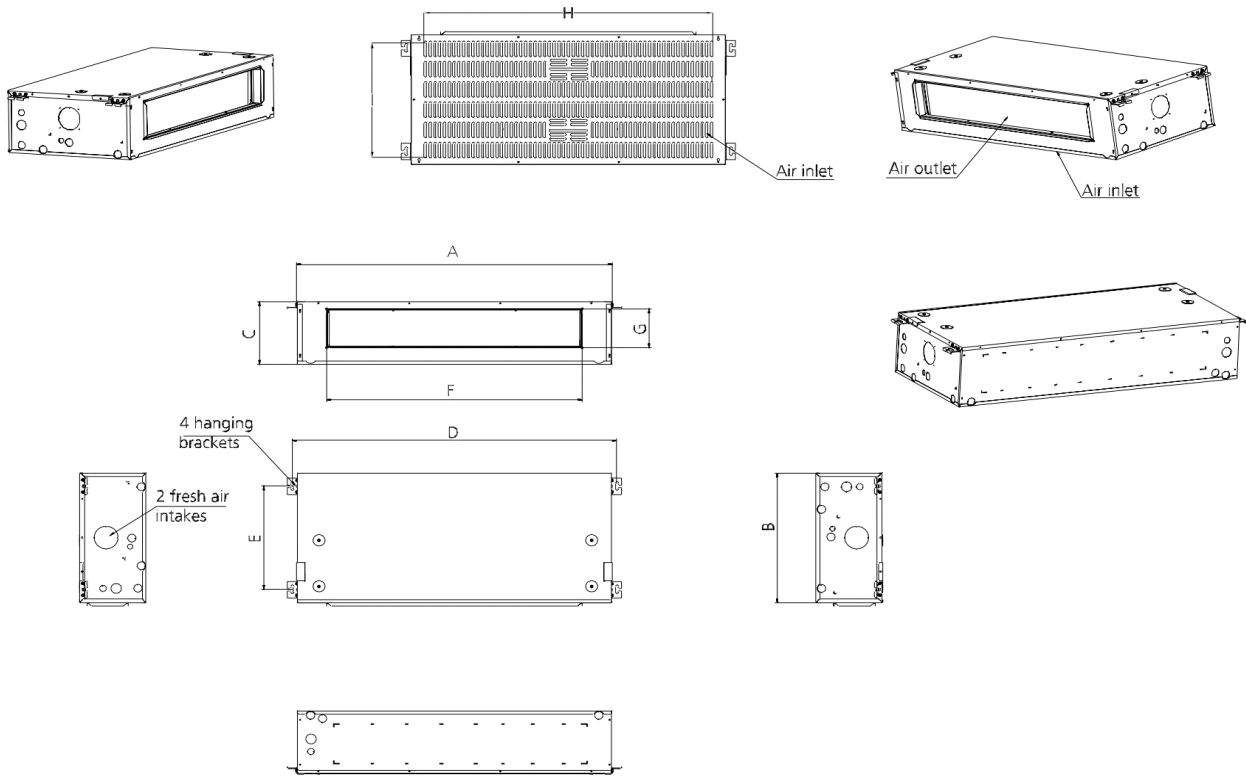
PERFORMANCE of Cooling	
Cooling (Btu/hr)	
Rated Capacity	24,000
Min/Max Capacity	7,400 ~ 27,000
Moisture Removal (L/h)	1.91
Standard Operating Range (°F/°C)	-22 ~ 122 (-30 ~ 50)
Rated Cooling Conditions:	Indoor: 80°F DB / 67°F WB Outdoor: 95°F DB / 75°F WB

PERFORMANCE of Heating	
Heating (Btu/hr)	
1. @ 47°F Rated	26,000
1. @ 47°F Min/Max Capacity	9,200 ~ 32,200
2. @ 17°F Rated	19,800
3. @ 5°F Rated: Capacity / COP	20,000 / 1.9
3. @ 5°F Max: Capacity	20,000
Standard Operating Range (°F/°C)	-22 ~ 75 (-30 ~ 24)
1. Rated Heating Conditions:	Indoor: 70°F DB / 60°F WB Outdoor: 47°F DB / 43°F WB
2. Rated Heating Conditions:	Indoor: 70°F DB / 60°F WB Outdoor: 17°F DB / 15°F WB
3. Heating Conditions, Compressor Operating at Max. Frequency	Indoor: 70°F DB / 60°F WB Outdoor: 5°F DB / 5°F WB

ELECTRICAL	
Indoor Power Supply	115/208/230, 60Hz, 1Ph
Indoor MCA 115V / (208/230V)	115V:7; 208/230V:5
Indoor MOP	15
Outdoor Power Supply	208/230, 60Hz, 1Ph
Outdoor MCA	19
Outdoor MOP	20
Communication Wiring	AWG 20/2
Compressor RLA	14
Outdoor Fan Motor RLA	1
Outdoor Fan Motor W	80
Indoor Fan Motor RLA	115V:5.5; 208/230V:3.5
Indoor Fan Motor W	250
System Power Input @ Cooling (W)	2,222 (700 ~ 2,900)
System Power Input @ Heating (W)	2,209 (600 ~ 2,750)
MCA: Min. circuit amps (A)	MOCP: Max. over current protection (A)
RLA: Rated load amps (A)	W: Fan motor rated output (W)

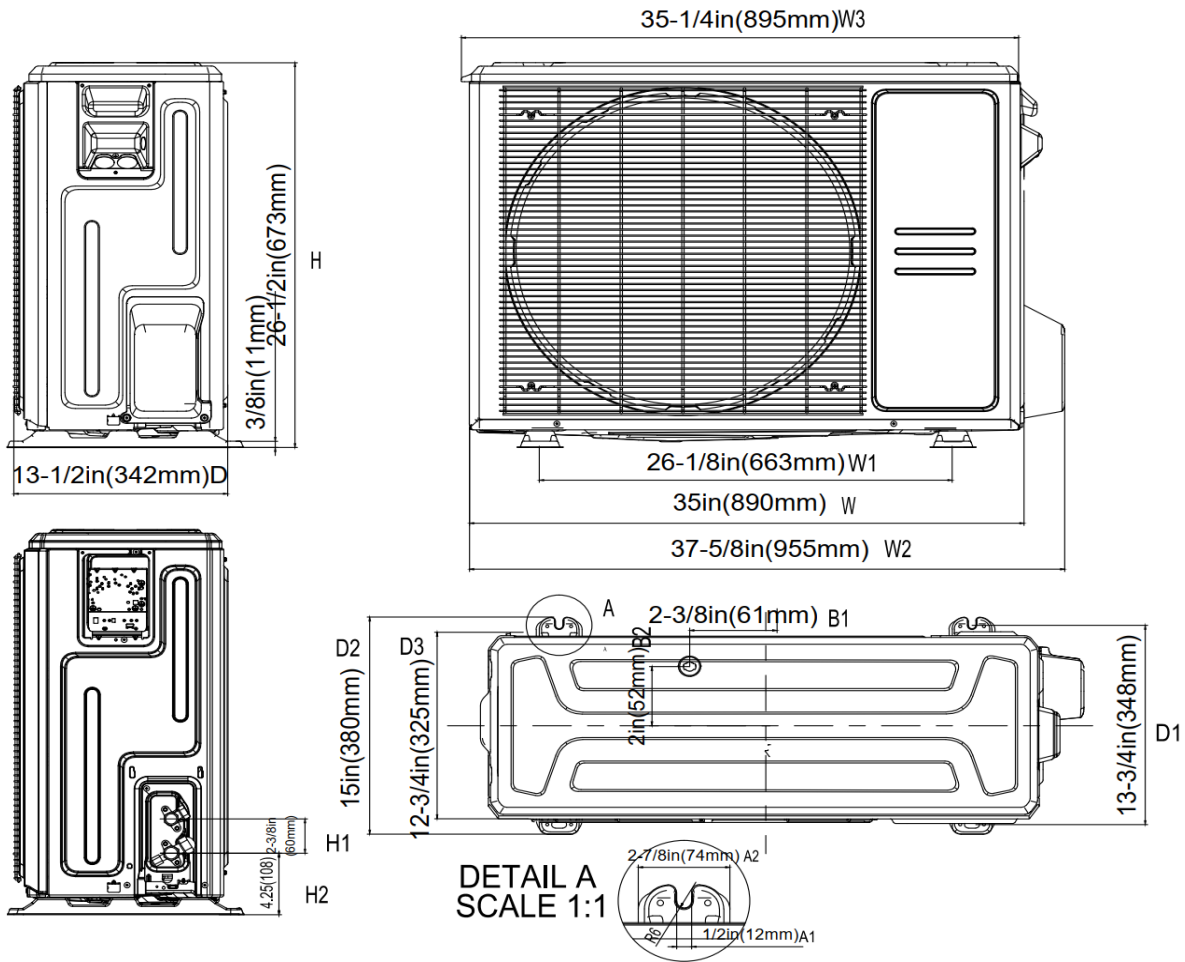
PIPING	
Throttle Type (Indoor)	EXV
Throttle Type (Outdoor)	EXV
Liquid Size	9.52mm (3/8in)
Gas Size	19mm (3/4in)
Max. Piping Length (ft/m)	164 (50)
Max. Height Difference (ft/m)	82 (25)
Max. Pre-charged Length (ft/m)	24.6 (7.5)
Refrigerant Pre-charged Amount (oz/kg)	74.08 (2.1)
Additional Charge of Refrigerant ((oz/ft) / (g/m))	0.7 (65)
Connection Method	Flared

Indoor Unit Dimension

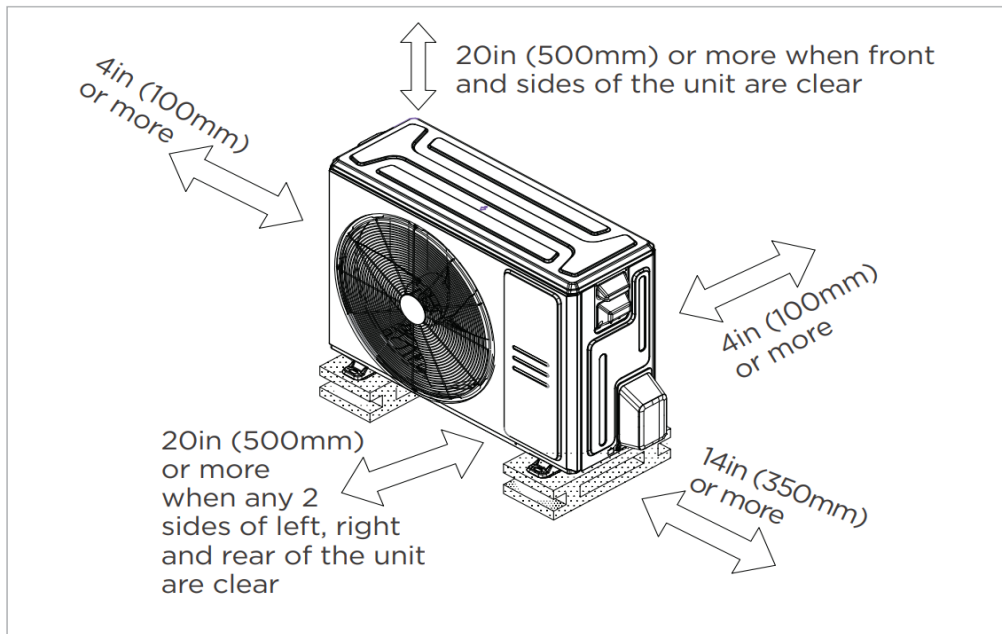


Dimensions		Model	18k	24k	30k/	36k
			inch(mm)	inch(mm)	inch(mm)	inch(mm)
Outline Dimension	A	Model Model	39-15/16 (1015)	45-7/8 (1165)	51-15/16 (1320)	58-7/8 (1495)
	B	Model Width	23-5/16 (593)	23-5/16 (593)	23-5/16 (593)	23-5/16 (593)
	C	Model Height	10-15/16 (278)	10-15/16 (278)	10-15/16 (278)	10-15/16 (278)
Size Of Mounted Lug	D	Mounted Lug Length	41-5/8 (1057)	47-1/2 (1207)	53-5/8 (1362)	60-1/2 (1537)
	E	Mounted Lug Width	18-1/8 (460)	18-1/8 (460)	18-1/8 (460)	18-1/8 (460)
Air Outlet Opening Size	F	Air Outlet Length	30-5/16 (769)	36-3/16 (919)	42-5/16 (1074)	49-3/16 (1249)
	G	Air Outlet Width	6-7/8 (174)	6-7/8 (174)	6-7/8 (174)	6-7/8 (174)
Air Return Opening Size	H	Air Return Length	38-3/8 (975)	44-5/16 (1125)	50-3/8 (1280)	57-1/4 (1455)
	I	Air Return Width	21-1/8 (536)	21-1/8 (536)	21-1/8 (536)	21-1/8 (536)

Outdoor Unit Dimension

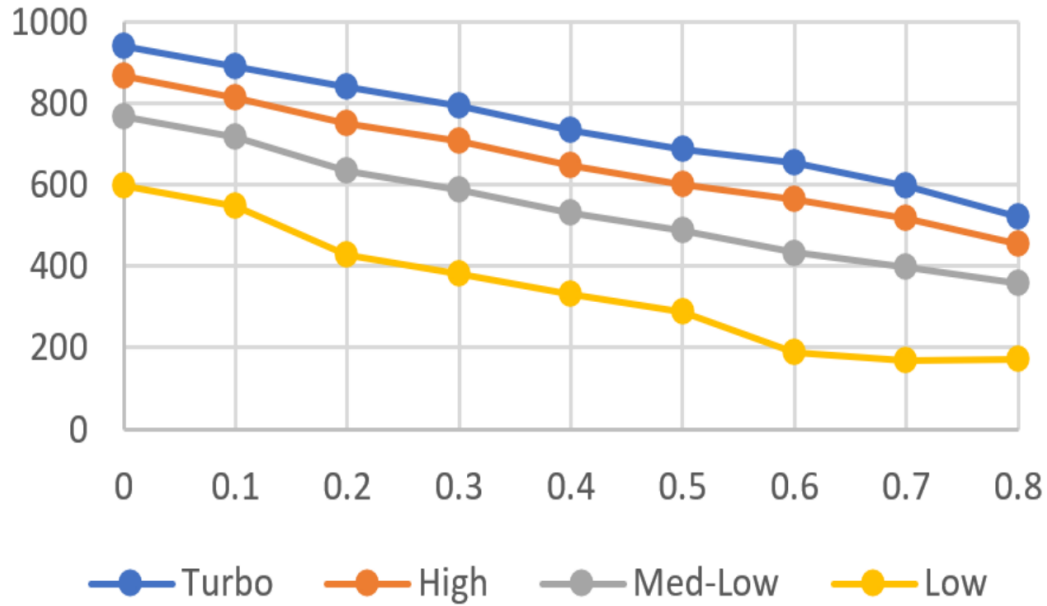


Installation Instruction For Outdoor Unit



Meets all spatial requirements shown in Installation Clearance Requirements above.

24K



Features

- High efficiency up to 16.8 SEER2, 12 EER2, 10.5 HSPF2
- Aluminum Coil
- IDU compatible with 115V and 230V
- Constantly Air Flow system up to 0.80 In.W.G
- Optional Auxiliary heat kit up to 10kW
- Easy Maintenance
- Multiple control options available:
 - Two way communication wired controller:120N(X6)
 - Two way communication wired controller with built-in WiFi:120N(X6W)
 - Wireless remote controller
 - Third-Party 24V Thermostat
- Adaptive Control wiring method on 24V and RS485
- Downward or Backward (optional) air inlet
- Chassis heater and crankcase heater equipped as standard