

Indoor: KEENHYDAH24AA

Outdoor KEENHYDHP24AA

## Air Handler Heat Pump System

Location:	Approval:
Engineer:	Date:
Submitted to:	Construction:
Submitted by:	Unit #:
Reference:	Drawing #:



## INDOOR SPECIFICATION

ESP (in WG)	0 - 0.8
Indoor Air Flow (Turbo/H/M/L/Si) (CFM)	824.0 / 759.3 / 694.5 / 629.8 / N/A
Indoor Noise Level (Turbo/H/M/L/Si) (dBA)	N/A / 44 / 42 / 28 / N/A
Dimension (W×D×H)	inch mm
Package (W×D×H)	inch mm
Net/Gross Weight	lbs kg

## OUTDOOR SPECIFICATION

Compressor Type	ROTARY
Compressor Model	KTM240D46UKT2
Refrigerant	R454B
Refrigerant Oil Charge (mL)	620
Refrigerant Oil	VG74
Outdoor Air Flow (Max) (CFM)	1765.7
Outdoor Noise Level (dBA)	60
Dimension (W×D×H)	inch mm
Package (W×D×H)	inch mm
Net/Gross Weight	lbs kg

## ELECTRICAL

Indoor Power Supply	115 / 208 / 230V, 60Hz, 1Ph
Indoor MCA 115V / (208/230V)	5.5 / 4.0
Indoor MOP	15
Outdoor Power Supply	208 / 230V, 60Hz, 1Ph
Outdoor MCA	19
Outdoor MOP	20
Communication Wiring	AWG 20-2
Compressor RLA	14
Outdoor Fan Motor RLA	1
Outdoor Fan Motor W	80
Indoor Fan Motor RLA	3
Indoor Fan Motor W	250
System Power Input @ Cooling (W)	1965 (530 ~ 2870)
System Power Input @ Heating (W)	2112 (440 ~ 2730)
MCA: Min. circuit amps (A)	MOCP: Max. over current protection (A)
RLA: Rated load amps (A)	W: Fan motor rated output (W)

## PIPING

Throttle type (Indoor)	EXV
Throttle type (Outdoor)	EXV
Liquid Size	9.52mm (3/8in)
Gas Size	19mm (3/4in)
Max. Piping Length (ft/m)	164 (50)
Max. Height Difference (ft/m)	82 (25)
Max. Pre-charged Length (ft/m)	24.6 (7.5)
Refrigerant Pre-charged Amount (oz/kg)	74.08 (2.1)
Additional Charge of Refrigerant ((oz/ft) / (g/m))	0.7 (65)
Connection Method	Flared

## EFFICIENCY

Cooling	Heating
SEER2	HSPF2-4
EER2	COP

## PERFORMANCE of Cooling

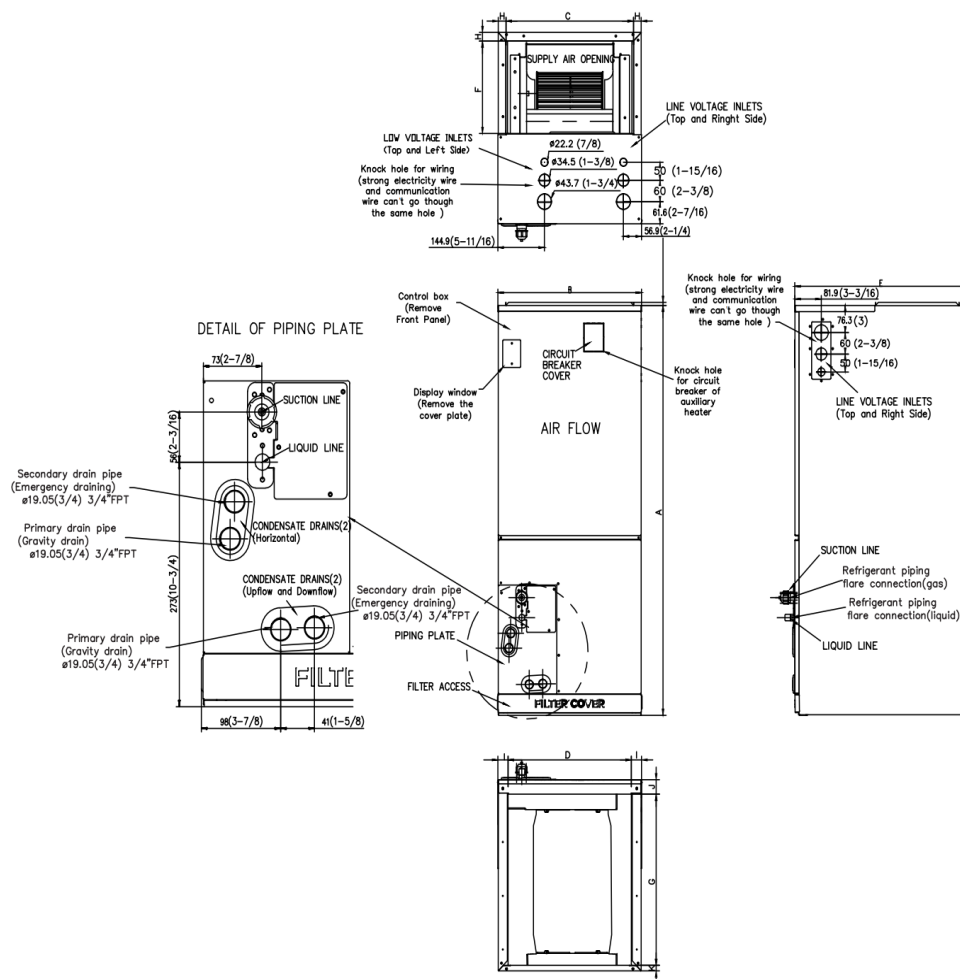
### Cooling (Btu/hr)

Rated Capacity	23000
Min/Max Capacity	7200~27000
Moisture Removal(L/h)	2.05
Standard Operating Range(*F/*C)	-22~122 (-30~50)
Rated Cooling Conditions:	Indoor: 80°F DB / 67°F WB Outdoor: 95°F DB / 75°F WB

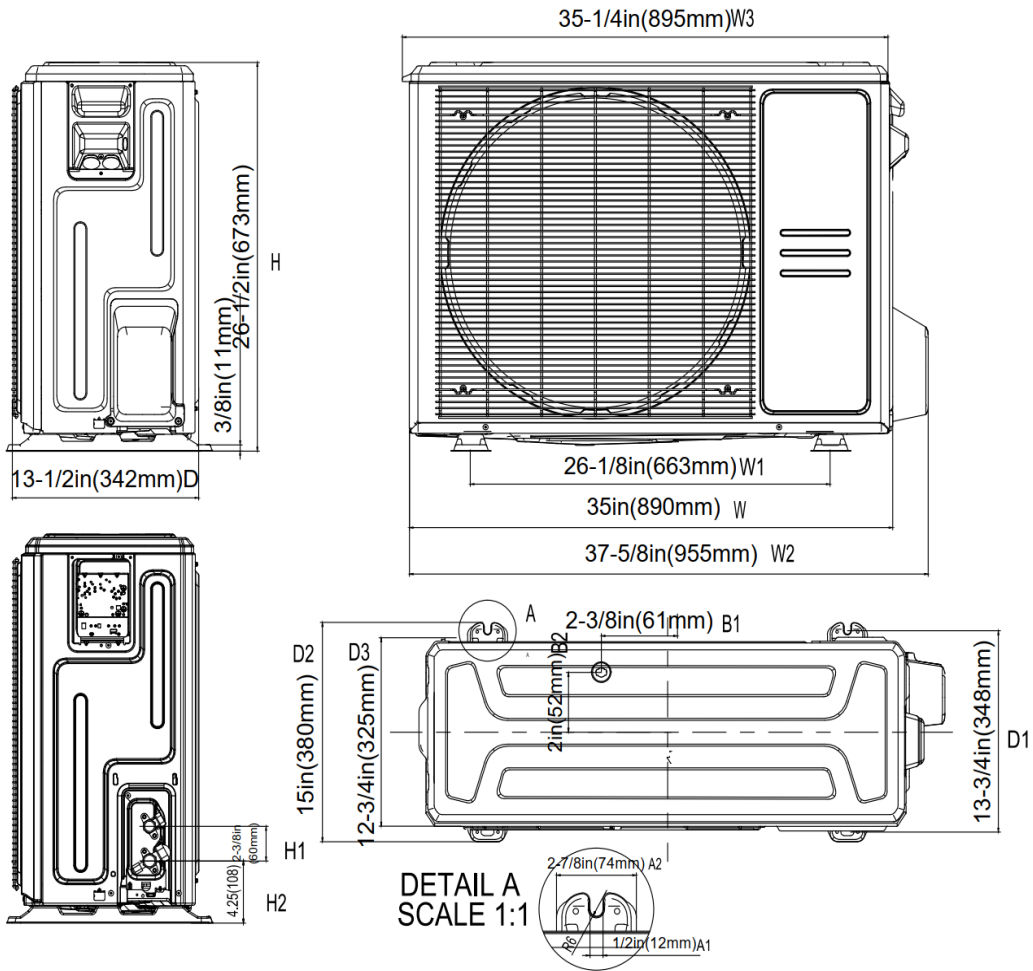
## PERFORMANCE of Heating

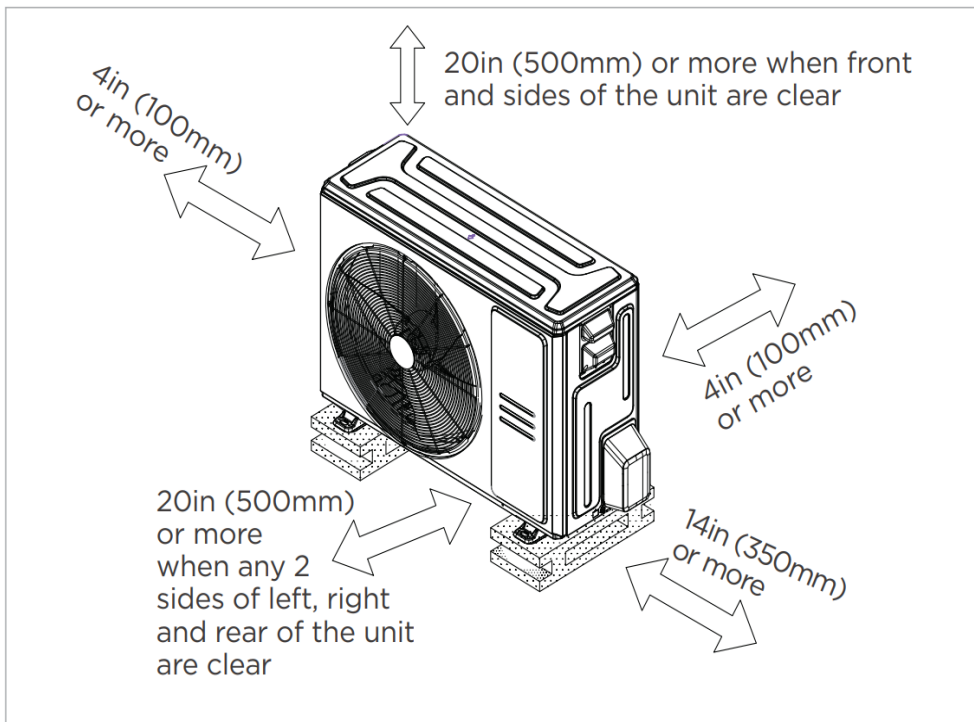
### Heating (Btu/hr)

1. @ 47°F Rated	24000
1. @ 47°F Min/Max Capacity	7100~30000
2. @ 17°F Rated	20000
3. @ 5°F Rated: Capacity / COP	21600 / 1.87
3. @ 5°F Max: Capacity	21600
Standard Operating Range (*F/*C)	-22~75 (-30~24)
1. Rated Heating Conditions:	Indoor: 70°F DB / 60°F WB Outdoor: 47°F DB / 43°F WB
2. Rated Heating Conditions:	Indoor: 70°F DB / 60°F WB Outdoor: 17°F DB / 15°F WB
3. Heating Conditions, Compressor Operating at Max. Frequency	Indoor: 70°F DB / 60°F WB Outdoor: 5°F DB / 5°F WB

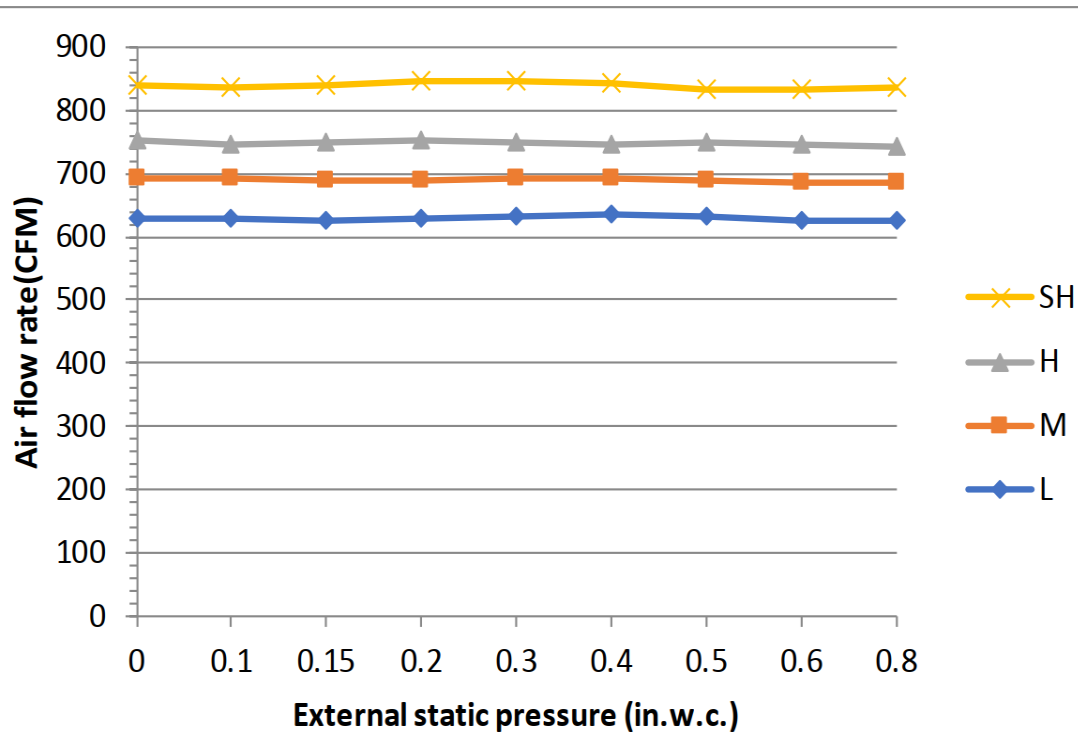


Dimensions	Model	18k/24k		30k/36k		48k/60k	
		inch	mm	inch	mm	inch	mm
A	Model Height	45	1143	49	1245	53	1346
B	Model Width	17-1/2	445	21	534	24-1/2	622
C	Supply Air Opening Width	15-5/8	397	19-1/8	486	22-5/8	575
D	Return Air Opening Width	15-1/8	384	18-5/8	473	22-1/8	562
E	Model Depth	21	534	21	534	21	534
F	Supply Air Opening Depth	10-1/4	260	10-1/4	260	10-1/4	260
G	Return Air Opening Depth	18-3/4	476	18-3/4	476	18-3/4	476
H	Supply Air Opening Clearance	15/16	24	15/16	24	15/16	24
I	Return Air Opening Side Clearance	1-1/4	32	1-1/4	32	1-1/8	28
J	Return Air Opening Front Clearance	1-1/2	38	1-5/8	41	1-5/8	41
K	Return Air Opening Back Clearance	5/8	16	5/8	16	3/4	19





Meets all spatial requirements shown in Installation Clearance Requirements above.



#### Features

- Multi-position installation: horizontal (left or right), vertical (up or down)
- Aluminum Coil
- Constantly Air Flow system up to 0.80 In.W.G
- 1 inch R4.2 fiberglass free insulation reduces condensation and boosts efficiency (optional)
- Optional Auxiliary heat kit up to 25kW
- Easy Maintenance
- Multiple control options available:
  - Two way communication wired controller:120N(X6)
  - Two way communication wired controller with built-in WiFi:120N(X6W)
  - Wireless remote controller
  - Third-Party 24V Thermostat
- Adaptive Control System
- High efficiency up to 19 SEER2, 12.5 EER2, 10.3 HSPF2
- 100% heat output at -4F\*
- Chassis heater and crankcase heater equipped as standard

\* For 36K model, rated cooling capacity/heating capacity at -4F=100%