

Indoor	KEENFCAH24AA	Outdoor	KEENUMHP24AA
Ceiling & Floor Heat Pump System			
Location:		Approval:	
Engineer:		Date:	
Submitted to:		Construction:	
Submitted by:		Unit #:	
Reference:		Drawing #:	



INDOOR SPECIFICATION		
Indoor Air Flow (Turbo/H/M/L/Si) (CFM)		735.8 / 706.3 / 606.3 / 453.2 / 376.7
Indoor Noise Level (Turbo/H/M/L/Si) (dBA)		51.5 / 49.0 / 45.0 / 34.0 / 29.0
Dimension (WxDxH)	inch	42.05 x 26.57 x 9.25
	mm	1068.0 x 675.0 x 235.0
Package (WxDxH)	inch	45.08 x 29.72 x 12.52
	mm	1145 x 755 x 318
Net/Gross Weight	lbs	61.29 / 73.19
	kg	27.8 / 33.2

OUTDOOR SPECIFICATION		
Compressor Type		ROTARY
Compressor Model		KTM240D46UKT2
Refrigerant		R454B
Refrigerant Oil Charge (mL)		620
Refrigerant Oil		VG74
Outdoor Air Flow (Max) (CFM)		2236.7
Outdoor Noise Level (dBA)		61.5
Dimension (WxDxH)	inch	37.24 x 16.14 x 31.89
	mm	946.0 x 410.0 x 810.0
Package (WxDxH)	inch	42.91 x 19.68 x 34.84
	mm	1090 x 500 x 885
Net/Gross Weight	lbs	130.29 / 141.31
	kg	59.1 / 64.1

EFFICIENCY			
Cooling		Heating	
SEER2	20.4	HSPF2-4	12.1
EER2	12	COP	3.34

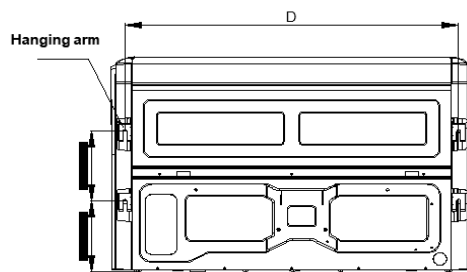
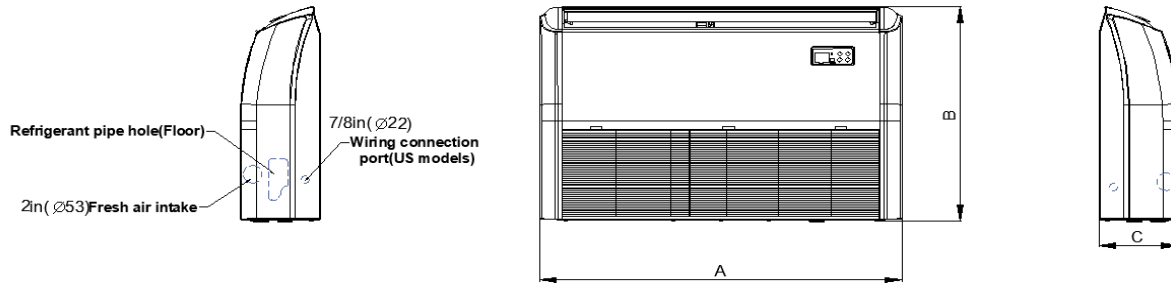
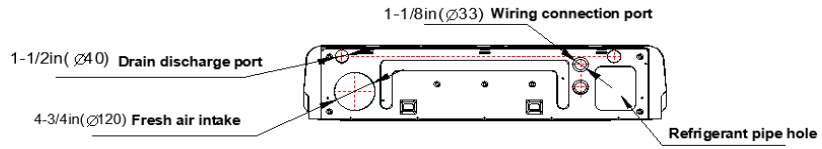
PERFORMANCE of Cooling	
Cooling (Btu/hr)	
Rated Capacity	22000
Min/Max Capacity	12700 ~ 25600
Moisture Removal (L/h)	2.73
Standard Operating Range (*F/*C)	-22 ~ 122 (-30 ~ 50)
Conditions:	Indoor: 80°F DB / 67°F WB Outdoor: 95°F DB / 75°F WB

PERFORMANCE of Heating	
Heating (Btu/hr)	
1. @ 47°F Rated	26000
1. @ 47°F Min/Max Capacity	11300 ~ 29500
2. @ 17°F Rated	20200
3. @ 5°F Rated: Capacity / COP	24200 / 2.16
3. @ 5°F Max: Capacity	24200
Standard Operating Range (*F/*C)	-22 ~ 75 (-30 ~ 24)
1. Conditions:	Indoor: 70°F DB / 60°F WB Outdoor: 47°F DB / 43°F WB
2. Conditions:	Indoor: 70°F DB / 60°F WB Outdoor: 17°F DB / 15°F WB
3. Conditions:	Indoor: 70°F DB / 60°F WB Outdoor: 5°F DB / 5°F WB

ELECTRICAL	
Power Supply	208/230V, 60Hz, 1Ph
System MCA	24.90
Connection Wiring	14#x4
System MOCP	25
Compressor RLA	15.0
Outdoor Fan Motor RLA	1.3
Outdoor Fan Motor W	120
Indoor Fan Motor RLA	1.0
Indoor Fan Motor W	90
System Power Input @ Cooling (W)	1833 (980 ~ 2300)
System Power Input @ Heating (W)	2194 (630 ~ 2570)
MCA: Min. circuit amps (A)	MOCP: Max. over current protection (A)
RLA: Rated load amps (A)	W: Fan motor rated output (W)

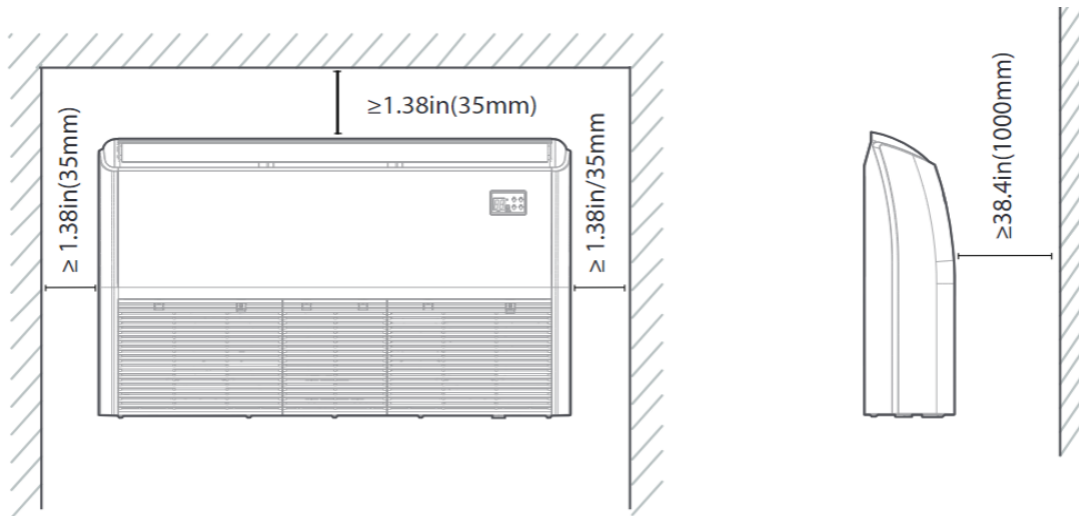
PIPING	
Throttle type (Indoor)	N/A
Throttle type (Outdoor)	EXV+Throttle valve
Liquid Size	9.52mm (3/8in)
Gas Size	15.9mm (5/8in)
Max. Piping Length (ft/m)	164.00 (50)
Max. Height Difference (ft/m)	82.00 (25)
Max. Pre-charged Length (ft/m)	24.6 (7.5)
Refrigerant Pre-charged Amount (oz/kg)	63.49 (1.80)
Additional Charge of Refrigerant ((oz/ft) / (g/m))	0.32 (30)
Connection Method	Flared

Indoor Unit Dimension

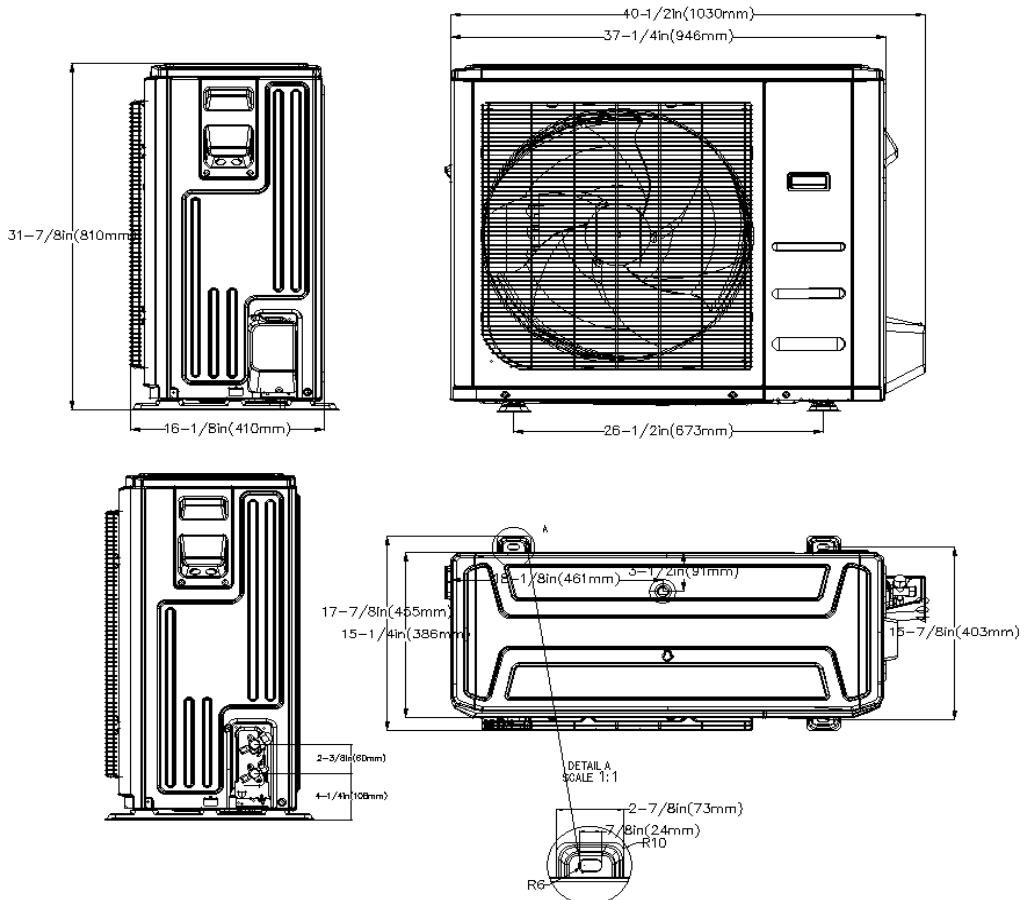


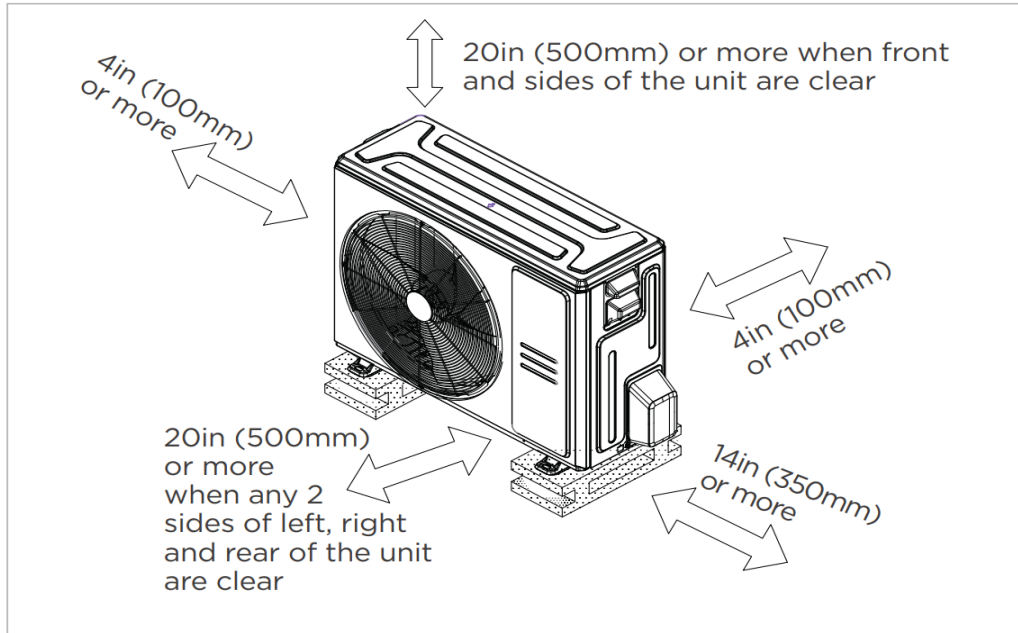
Model	A	B	C	D
18K/24K	42in(1068mm)	26-1/2in(675mm)	9-1/4in(235mm)	38-3/4in(983mm)
36K/48K/60K	65in(1650mm)	26-1/2in(675mm)	9-1/4in(235mm)	61-5/8in(1565mm)

Installation Instruction



Outdoor Unit Dimension





- Meets all spatial requirements shown in Installation Clearance Requirements above.