



HM Hull
Medical
Education
Centre

MEDICAL EDUCATION NEWSLETTER

OCTOBER 2025



DIRECTOR OF MEDICAL EDUCATION

Professor Jack Kastelik

It is with a great pleasure to welcome you to the October edition of the Newsletter. We completed our October Induction and welcomed new trainees to our organisation. Overall, since August we provided induction for over 300 trainees.

I would like to thank the Medical Education and Medical Staffing teams who worked tirelessly to support our Resident Doctors. Our Medical Staffing Team has put in an enormous amount of work over the last few months supporting our Resident Doctors. Both the Medical Education and the Medical Staffing teams have worked very hard over the last 12 months in order to improve the induction process and the doctors' experience when they are joining us. We have received very positive feedback.

We completed the Medical Education progress report highlighting the main aspects, which included the following:

- Significant reduction in outstanding quality requirements by NHSE
- Positive engagement from medical teams to improve the quality of education and training of Resident Doctors
- Experience of having the Assistant Psychologist role to sit within Medical Education to support Resident Doctor well-being
- Introduction of Associate Medical Education Fellows to aid Resident Doctor engagement
- Experience of having an IMG/LED Tutor to support all International Medical Graduates at HUTH.

The Medical Education team has undertaken a large amount of work in relation to the recent GMC survey. We worked very closely with NHS England Yorkshire and the Humber Team. In addition, we undertook a number of meetings with the individual departments. We would like to thank all the departments and the Clinical and Educational supervisors who met with us for their work towards improving education and training.

.....
Professor Jack Kastelik
Director of Medical Education

MEET YOUR SENIOR LEADERSHIP TEAM



Professor Jack Kastelik
Director of Medical Education

As Director of Medical Education, Professor Kastelik operationally supports the education and training of all Doctors in Training as well as supporting Educational and Clinical Supervisors.



Dr Rana Alia
Deputy Director of Medical Education

As Deputy Director of Medical Education, Dr Alia supports the Foundation Training Programme as well as International Medical Graduates.



Charlotte Precious
Medical Education Manager

Charlotte supports the Directors as well as managing the Medical Education Team.

MEET YOUR FTPD TEAM

The FTPD team are here to support all Foundation Doctors in the Trust as well as ensuring that the regional training programme is delivered. The FTPD's work closely with the Director and Deputy Director of Medical Education to ensure that all Foundation Doctors have access to suitable training which will allow them the opportunity to achieve the requirements for a satisfactory completion of the Foundation Training Programme.



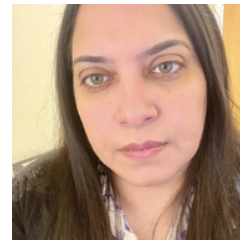
Dr Uzma Tazeen
Consultant in Elderly Medicine and FTPD



Dr Anju Raina
Consultant Anaesthetic and FTPD



Mr Mahmud Fleet
Consultant Paediatric Surgeon and FTPD



Dr Uzma Kamdar
Consultant in Respiratory Medicine and FTPD



Mr Junaid Sultan
Consultant Vascular Surgeon and FTPD

Meet the rest of the team
hmec.uk/meet-the-team



November Upcoming Events

3RD

November
RMO Drop In

5TH

November
F1 Teaching Day

7TH

November
Regional Orthopaedic
Hand Teaching

12TH

November
F2 Day 7 BTG Pain
Management course

14TH

November
F1 Teaching Day

17TH

November
ST3 - 4 Reflective Practice
& Managing Stress

19TH

November
Educational Supervisor
Workshop -
Nimmi Soundararajan

26TH

November
Enhance - Regional
Teaching Day

27TH

November
F1 Teaching Day

Clinical Attachments Now Open

We're excited to share that Clinical Attachments are now open across both Hull University Teaching Hospitals NHS Trust (HUTH) and Northern Lincolnshire and Goole NHS Foundation Trust (NLaG).

These attachments give doctors and health professionals the chance to observe and learn within a variety of clinical specialties alongside our teams.

We're currently developing a draft policy to support and standardise the process across both Trusts, and we'll share updates soon. In the meantime, if you have any questions or would like more information.

Please get in touch:

- HUTH: hyp-tr.clinical.attachments.huth@nhs.net
- NLaG: nlg-tr.twpgmecontact@nhs.net

Thank you for supporting clinical education and helping us provide meaningful learning experiences within our hospitals.



What's New? - Study Leave

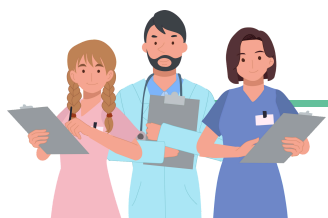
You can now apply for early reimbursement of study leave expenses.

As of Wednesday 8th October 2025, all approved activity taking place on or after this date will be eligible for early reimbursement. Accent Leave Manager has now been configured to allow for this change.

What you need to know:

- Early reimbursement will be available for all study leave expenses prior to attending for which a receipt can be provided. Mileage and subsistence cannot be claimed until after the activity, with receipts.
- This is only applicable for events dated within your employment with the trust you are submitting your application to i.e if you are rotating to another trust at the time of the event, you will need to wait and submit your application and expenses once you have rotated.
- If you are unable to attend due to illness/other, it is recommended you attempt to reschedule with the provider if possible ahead of cancelling. If you do need to cancel/ the provider cancels, it is your responsibility to notify the Medical Education team as costs will need to be recovered in accordance with the trusts internal policy for repayment.

If you have any questions, please reach out to your Medical Education team.



Hello to Our Visiting Doctors from China



We're delighted to welcome the newest cohort of doctors joining us through the Chinese Doctor Programme at Hull University Teaching Hospitals NHS Trust.

This valued partnership promotes professional development and international collaboration, giving participating doctors the chance to gain hands-on learning experience across a range of clinical specialties within our teaching hospitals.

The programme reflects our continued commitment to medical education and the sharing of best practice. We're proud to support our new colleagues as they begin their clinical journey with us and look forward to the insight and experience they will bring to our teams.

We're also keen to hear from departments who would be happy to host a Chinese doctor as part of this programme. If your department is interested or would like to find out more.

Please get in touch:

- HUTH: hyp-tr.clinical.attachments.huth@nhs.net
- NLaG: nlg-tr.twpgmecontact@nhs.net



Upcoming ES Courses

HUTH

Wednesday 19 November	8.30am - 12noon	Face to Face	CHH Lecture Theatre
Monday 15 December	1pm - 4.30pm	Virtual	Big Blue Button
Tuesday 3 February	10am - 1.30pm	Face to Face	CHH Lecture Theatre
Tuesday 10 March	9am - 12.30pm	Face to Face	Seminar Room 3, MEC, HRI

To book, attendees must have completed the eLearning Modules on HEY247. Once completed, booking will be available for attendees to book a date of their choice. If there are any problems accessing the training or the training is not available, please email hyp-tr.hey247@nhs.net for assistance. On completion of the training, the PARE register and GMC Connect will be updated. Please contact janet.tasker5@nhs with any general queries.

NLaG

Tuesday 18 th November	9:00am-4:30pm	DPOW
-----------------------------------	---------------	------

For NLAG, attendees re-accrediting just need to sign up for the face-to-face workshop by completing the booking form (scan QR code). First time attendees need to complete the mandatory e-learning modules on the eLFHs system prior to attending, these sessions are facilitated by Mr Silas Gimba, Director of Medical Education.

Certificates of attendance will be provided along with 6 CPD points. PARE system and GMC connect will be updated on completion.



Any queries, please email emma.rhodes15@nhs.net



Less Than Full Time - Handbook



We are pleased to share a few updates relating to LTFT Resident Doctors.

To improve communication between the Resident Doctors and LTFT team, we have setup a new LTFT mailbox ie. hyp-tr.LTFT-Hull@nhs.net . Please direct any future LTFT-related questions or correspondence to this inbox. The inbox will be regularly monitored and reviewed by the LTFT team to ensure a timely response.

We are also delighted to announce that the LTFT Handbook has now been finalised and will shortly be available on Bridget. A PDF copy is attached to this email. The handbook contains updated references and guidance to answer common queries and we hope you'll find it helpful.

Following an internal review, and due to consistently low attendance and engagement at previous LTFT Forum meetings, we have decided to pause the monthly forums until further notice. We'll continue to provide support and respond to individual queries via the new shared mailbox.

If you have any questions or need further assistance, please don't hesitate to get in touch.

The LTFT Team



IMG Induction Day – Welcoming Our New International Doctors



Our October IMG Induction Day was a huge success! We had a fantastic turnout of new International Medical Graduates, who spent the day connecting, sharing experiences, and learning valuable tips to help them thrive in the NHS.

The event featured an inspiring line-up of speakers delivering interactive and practical sessions on everything from communication and wellbeing to career development and working within the NHS. The atmosphere was warm, welcoming, and full of energy, the perfect setting for new colleagues to make connections and start their UK medical journey on the right foot. A big thank you to everyone who contributed to making the day so enjoyable and impactful!

New Arrangements for Exception Reporting

Effective 1st October 2025, Humber Health Partnership's Guardians of Safe Working Hours (Dr Liz Evans and Dr Wajiha Arshad) agreed that the Group will go live with most elements of the Exception Reporting Reforms. As the reforms seems to offer so many advantages to the Resident Doctors, we as a team have prepared for the changes and implemented.

From 1st October 2025:

- Your exception reports will be confidential - nobody outside of the Guardian of Safe Working Team and selected representatives from the Medical Education Team will be able to access the system
- We will guarantee access to the exception reporting system within 7 days of starting at the trust
- We will review and close all reports for under 2 hours of extra time within a 7-day time limit
- You will have the right to chose an outcome for extra time worked
- All TOIL must be applied for within 10 days of it being granted. If your preferred outcome is TOIL, you will receive confirmation from the GoSWH team that this has been approved. You will then be able to take this evidence to your rota coordinator to get this TOIL booked
- We will not be able to breach your confidentiality without your explicit permission - this applies to all aspects of the system including work schedule reviews and board reports. If there is information that we feel needs to be discussed further, we will seek your explicit consent before sharing it. We will be reporting our figures to the board at Care Group level to protect the confidentiality of Resident Doctors in smaller departments
- We will not investigate excessively any extra hours worked up to a 2 hour limit. If you work longer than this the 7 day time limit will not apply, this is so we have a bit more time to investigate and decide if there is any more support that is needed, or system problems which need addressing. Your confidentiality will still be respected.
- You will be able to exception report if someone discourages you from exception reporting- for now please put this as a lack of support during service commitments

We are waiting for an update from Allocate/RLDatix who are changing the system to accommodate the new changes- in the interim:

- Please just explain in the free text what outcome you would prefer (TOIL or Payment)
- Supervisors are no longer able to be selected within the system so for NLAG please choose Helen Fitzpatrick and HUTH please chose Rose Bundy.



There may be some teething problems at the start of this process, so please let us know if there is anything you notice that isn't working so well so we can sort things out (GoSWH email is nlg-tr.twnlgguardianofsafeworking@nhs.net). We really hope these changes will remove some of the barriers to exception reporting and make our hospitals a safer and kinder place to work!

Foundation Doctors - Team Assessment of Behaviour

Foundation doctors should have been reminded by their administrators to have completed their self-TAB, so that they can get feedback from their multi-disciplinary colleagues on their professional behaviours, communication and teamwork, separate from their clinical competence.

Educational supervisors can comment on this at their end of placement meeting.

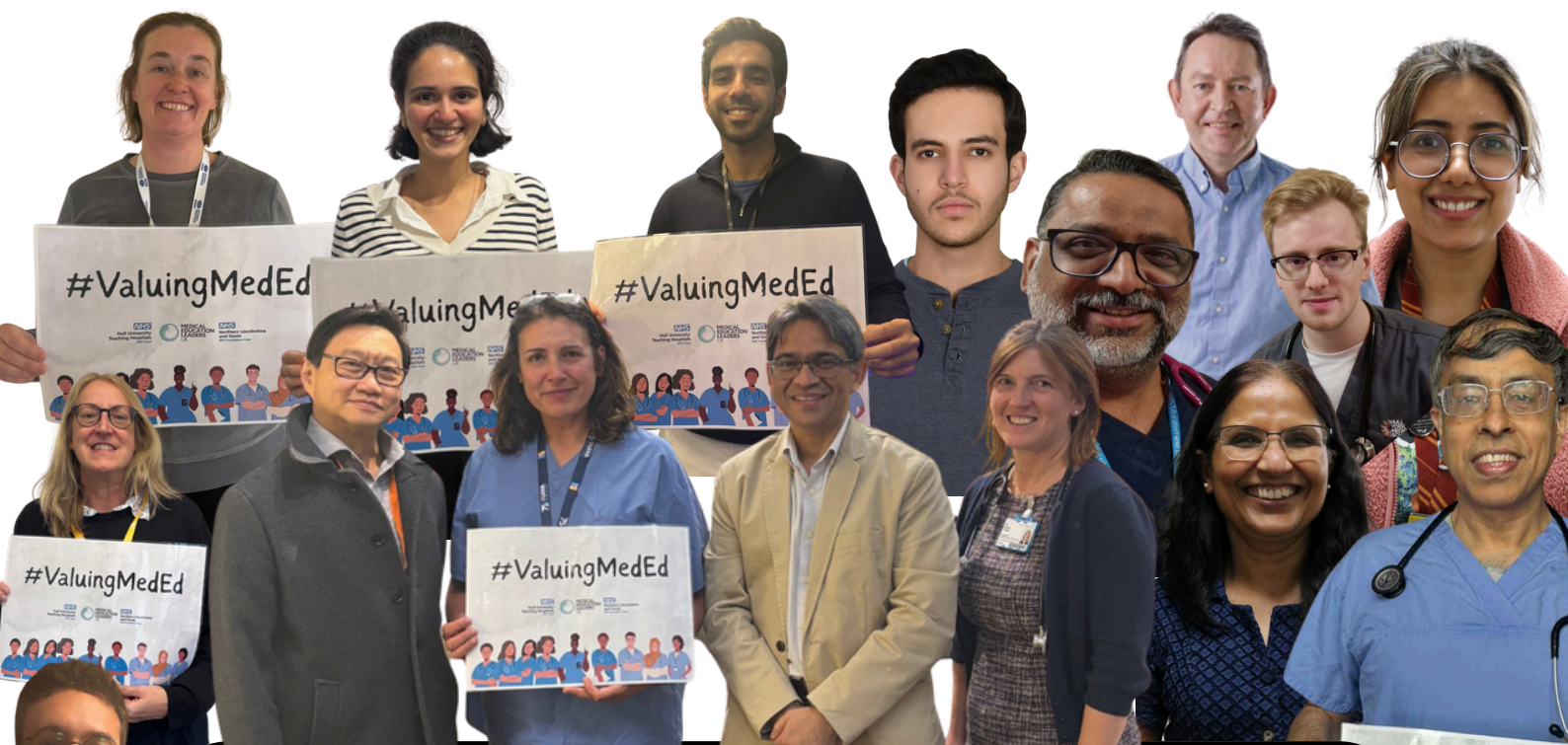
How do I start TAB?

TAB must be started by the foundation doctor.

- 1 Select "Forms (start new) from your main menu and select " Team Assessment of Behaviour (TAB)" from the 'Mandatory forms for each year' section
- 2 Select "Start new TAB"
- 3 Complete your self-TAB
- 4 If you already know the details of some/all of your assessors, enter their details below your self-TAB
- 5 Select "Save (and review before submission)"
- 6 Check you're happy with the contents of your self-TAB (if not, select "Make further changes")
- 7 Select "Start TAB"
- 8 On your Portfolio "TAB" you will see a summary of the TAB you have just started

A valid TAB must have a minimum of 10 responses. Your Assessors must included at least:

- two consultants or trained GPs
- one other doctor more senior than F2
- two senior nurses
- two allied health professionals/other team members

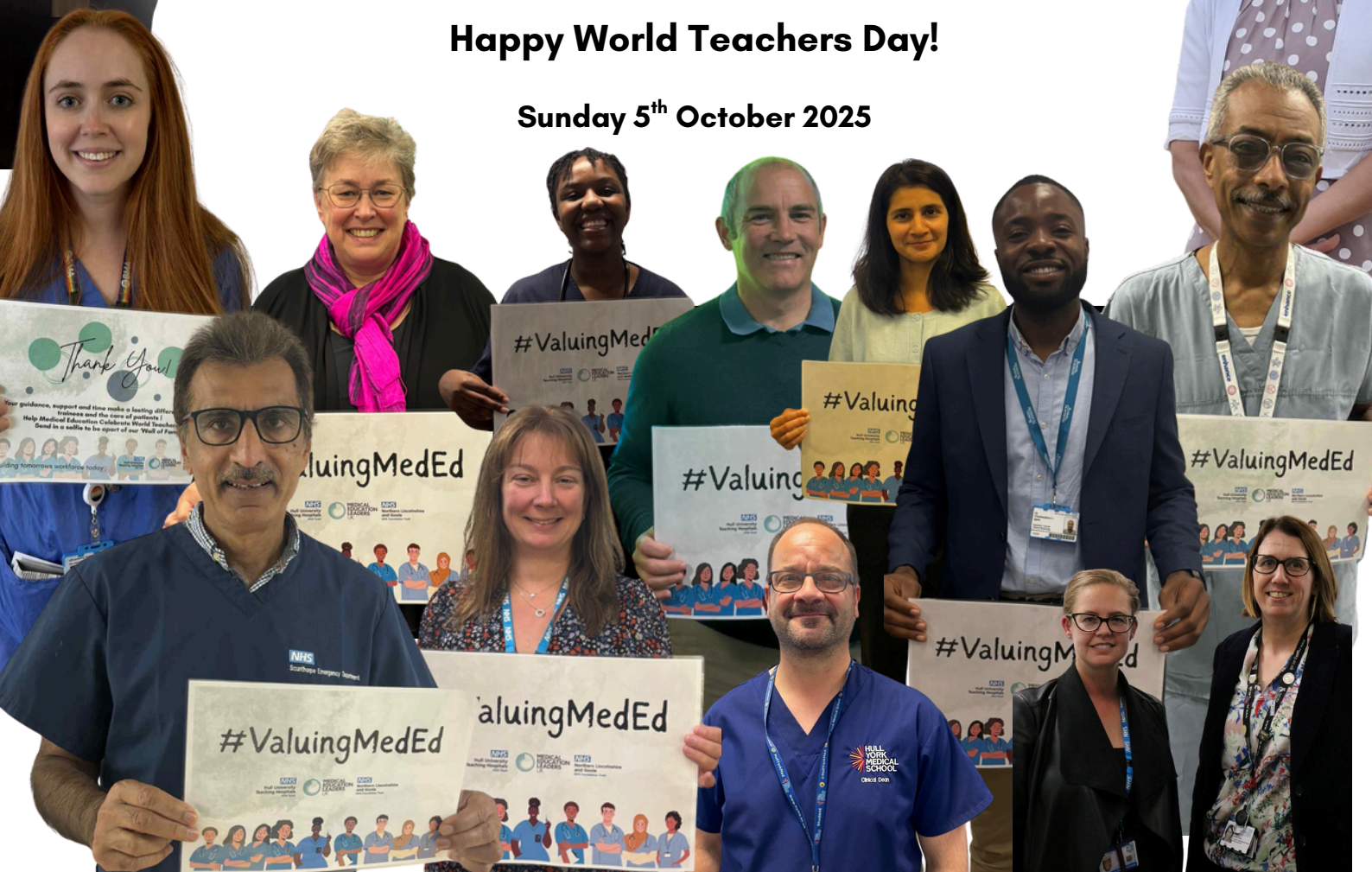


Thank You!

Your guidance, support and time make a lasting difference in lives of trainees and the care of patients!

Happy World Teachers Day!

Sunday 5th October 2025



Resident Doctor of the Month

September

Hull University Teaching Hospitals



Matthew Curran & Oliver Simmons Emergency Medicine

My lovely dad was admitted to A & E, the care we received from A and E staff was outstanding. A special shout out must go to Staff Nurse Savannah, Doctor Ollie and Dr Matthew Curran. These cared for my dad for the majority of the day. They were so warm and tender with him in his last moments. They treated him as gently as if he was their own dad. It was not just another patient to them, they really cared. They also showed patience to us when we had 100s of questions and compassion when we were sad.

They set the standard for medical care because they made a situation for Dad and our family bearable, dignified and respectful. Little things like listening calmly when we cried, making us a brew, coming back at the end of their shift to say goodbye all mattered so much at a painful time. Brilliant staff. Thank you for your kindness. We wish you all every success in your careers.

Northern Lincolnshire and Goole NHS Foundation Trust

Katie Yates Paediatrics

Paediatric Med Staff & Specialty at DPoW Katie the reg on Rainforest ward has been a great support over the last two shifts, she has supported me as a student nursing associate explaining medical terms and conditions develop my understanding. Katie displayed compassionate care to the patients overall, especially an anxious parent on the phone. Katie took the time to reassure the parent and answer her questions, going above and beyond. I feel Katie is a credit to the ward and thank her for her time over the last two shifts

Don't Forget!

Upload any submissions for Resident Doctor of the Month to Bridget as a 'Shining Lights'



Accessing the Health Toolbox app is an essential part of your doctor training, the toolbox app has everything you need to know all in one place, from previous induction videos, to study leave guides and wellbeing support - all essential details are in once place.

How to access:

1 Download Health Toolbox or open it in the browser on your PC or Phone.

2 You can then create an account

3 Create a new account

Select your location in the list or search below.

Hull University Teaching Hospitals HUTH

If you already have an account please first [sign in here](#).

Create a new account

Select your location in the list or search below.

Northern Lincolnshire and Goole NLG

4 You will then need to fill out the below with details about you and your job, this will then create you an account and you will have full access to the Health Toolbox Site.



You will need to search HUTH or NLG depending on which hospital you would like to access.



Creating a new account for:

Hull University Teaching Hospitals ([change](#))

- If you already have an account at Health Toolbox please [sign in](#).

Work Email (NHS, doctors.org.uk or .ac.uk):

Ensure it is correct as we need to send the login details.

Name:

Existing user email:

Password:

[Forgot your password?](#)

[Please read: Privacy policy and Terms of use](#)

[Accept terms & sign in](#) [Find your hospital or create an account](#)

Already have an account?

If you already have an account don't worry you can sign in if you remember your details or you can click 'forgot your password?' and you can then follow the relevant steps to recover your account

If you have any further questions about the Toolbox app please contact jessica.whittles@nhs.net

Monthly Round up

145

Toolbox
monthly users -
HUTH

70

Events at
HUTH

385

Accredited
Educational
Supervisors at
HUTH

12

Processing Clinical
Attachments at
HUTH

7

Medical Education
Awards -
(Coming soon!)

4

Chinese Doctors
in post at HUTH

184

Current
Instagram
Followers

6

Clinical
Attachments in
post at HUTH

144

Accredited
Educational
Supervisors at
NLAG

THANK YOU FOR READING!



TELL US ABOUT YOUR BEST PRACTICES

If you have any areas of good practice within your department/team that you would like to share and be included in the NHSE Best Practice App, please send details of what was implemented and why, any benefits or positive impacts and any details of lessons learnt to...

CHARLOTTE.PRECIOUS@NHS.NET

WANT TO FEATURE IN NEXT MONTH'S NEWSLETTER?

If you'd like to feature in next month's newsletter, please supply text, images and contact details to...

JESSICA.WHITTLES@NHS.NET