

aerocoach

AeroCoach Selachii universal aero BTA bottle system

The AeroCoach Selachii universal aero BTA bottle system for triathlon is fully tilt adjustable up to 40deg, has mounting points for 1 or 2 bottle cages, and includes easily accessible storage for nutrition when riding, even when both bottles are in place.

Compatibility:

- The Selachii mount is designed to work with Ascalon extensions, or with any aerobar mounting system that will accommodate a flat carbon plate to be placed between extensions and extension mounting surface, or between arm rests and extensions. The surfaces that are in contact with the Selachii carbon plate should be smooth (no protrusions into the carbon plate).

1. Carbon plate installation

A. With an existing installed AeroCoach Ascalon setup:

Option 1: carbon plate between bottom of Ascalons and top of Ascalon adapter:

1. Remove the M6 button head bolts that connect the Ascalons to the Ascalon adapter
2. Apply a small amount of carbon grip paste to the Selachii carbon plate and then place the plate between the Ascalons and the Ascalon adapter (or between the Ascalon adapter and the extra width / extra reach plates if applicable), and secure using the M6 button head bolts detailed in the table below (recommended torque 5-6Nm). If the adapter type has been specified on your order, we will include the correct length bolts with your Selachii mount. However for some adapter types, either it may not be possible to supply these bolts, or we may supply two bolt length options, only one of which is needed. **Please check that the bolts used to incorporate the carbon plate in the assembly are the correct type and length i.e. 4mm longer than those removed in step 1, before installation.**
3. Once the carbon plate is installed, please refer to the instructions below for assembly of the Selachii components on the carbon plate

Option 2: carbon plate between bottom of Align Wing carbon arm rests and top of Ascalons:

For some Ascalon adapters, e.g. Canyon CFR monopost, it is not possible to place the carbon plate between the Ascalons and Ascalon adapters due to the shape of the adapter. In this situation, the plate should be placed between the arm rests and the Ascalons:

1. Remove the M5 bolts that connect the arm rests to the Ascalons
2. Apply a small amount of carbon grip paste to the Selachii carbon plate and then place the plate between the arm rests and the Ascalons, using M5 button head bolts detailed in the table below (recommended torque 2-3Nm). **Please check that the bolts used to incorporate the carbon plate in the assembly are the correct type and length before installation.**
3. Once the carbon plate is installed, please refer to the instructions below for assembly of the Selachii components on the carbon plate

B. With a new AeroCoach Ascalon setup:

1. Follow the separate Ascalon installation instructions, placing the carbon plate between the bottom of the Ascalons and the top of the Ascalon adapter, or between the bottom of the extra width / extra reach plates and the top of the Ascalon adapter. Apply a small amount of carbon grip paste to the Selachii carbon plate surfaces that will be in contact with the adapter / Ascalons.
2. Use the longer M6 button head bolts that are provided with the Selachii mount in place of the M6 button head bolts that are provided with the Ascalon adapter to secure the Ascalons to the Ascalon adapter with the carbon plate in between these surfaces (recommended torque 5-6Nm).
3. Please note that for some Ascalon adapters, e.g. Canyon CFR monopost, it is not possible to place the carbon plate between the Ascalons and Ascalon adapters due to the shape of the adapter. In this situation, the plate should be placed between the arm rests and the Ascalons, using the longer M5 bolts provided with the Selachii mount in place of the M5 bolts included with the Ascalon adapters.

C. With AeroCoach Angles extensions and AeroCoach 22.2mm clamps:

1. Install the carbon plate between the Align Wing carbon arm rests and the extension clamps, using the M5 button head bolts detailed in the table below. Apply a small amount of carbon grip paste to the surfaces of the plate that will be in contact with the arm rests / extension clamps. Please refer to the separate instructions for correct installation of AeroCoach Angles extensions and 22.2mm extension clamps.

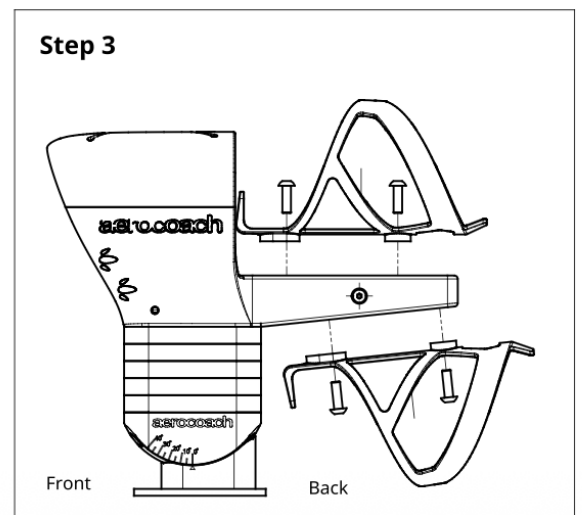
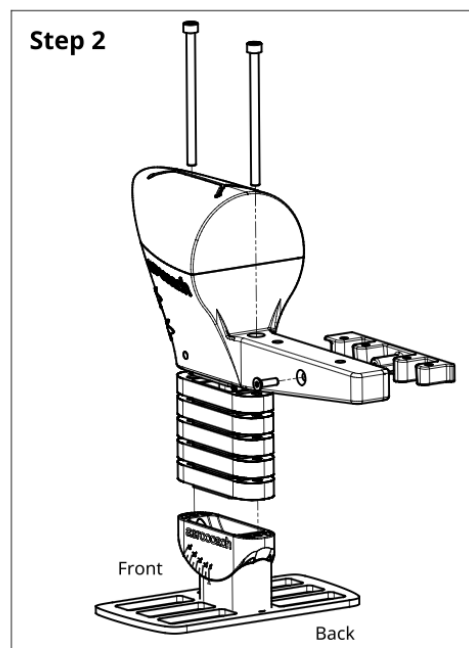
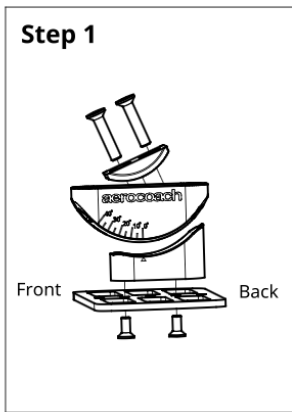
D. With non-AeroCoach extension system:

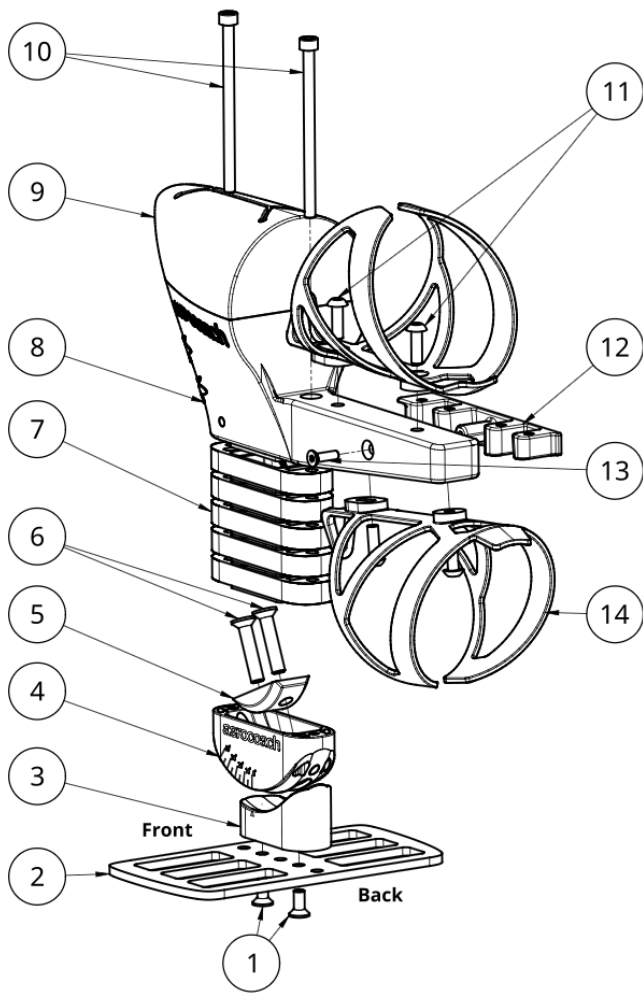
1. The carbon plate should be placed between extensions and extension mounting surface, or between arm rests and extensions. The surfaces that are in contact with the Selachii carbon plate should be smooth (no protrusions into the carbon plate). A small amount of carbon grip paste should be applied to the contact surfaces.
2. Please refer to your aerobar manufacturer's instructions to confirm that the correct type and length of bolt is used, as well as torque recommendations to incorporate the carbon plate into the system. **Please ensure that there will be sufficient thread engagement, advised by the aerobar manufacturer, once the carbon plate is installed.**

Extension type	Adapter type	Carbon plate installation location	Bolt type and length to install carbon plate
AeroCoach carbon Ascalons	AeroCoach tilt blocks (adapters that contain separate threaded bar or nuts in each adapter)	Directly on top of the adapters, or on top of the cable routing matched spacer if present	M6 button head 18mm if cable routing spacer is used on top of tilt blocks, OR 14mm if not
AeroCoach carbon Ascalons	AeroCoach bike-specific Ascalon adapters	Directly on top of the adapters	M6 button head 16mm
AeroCoach carbon Ascalons	AeroCoach bike-specific Ascalon adapters that don't allow plate installation between Ascalons and adapters e.g. Canyon CFR monopost	Between arm rests and Ascalons	M5 button head 14mm
AeroCoach titanium SL Ascalons	AeroCoach tilt blocks (adapters that contain separate threaded bar or nuts in each adapter)	Directly on top of the adapters, or on top of the cable routing matched spacer if present	M6 button head 22mm if cable routing spacer is used on top of tilt blocks, OR 18mm if not
AeroCoach titanium SL Ascalons	AeroCoach bike-specific Ascalon adapters	Directly on top of the adapters	M6 button head 20mm
AeroCoach titanium SL Ascalons	AeroCoach bike-specific Ascalon adapters that don't allow plate installation between Ascalons and adapters e.g. Canyon CFR monopost	Between arm rests and Ascalons	M5 button head 18mm
AeroCoach Elite titanium Ascalons with removable grippers (launched March 2026)	AeroCoach tilt blocks (adapters that contain separate threaded bar or nuts in each adapter)	Directly on top of the adapters, or on top of the cable routing matched spacer if present	M6 button head 22mm if cable routing spacer is used on top of tilt blocks, OR 18mm if not
AeroCoach Elite titanium Ascalons with removable grippers (launched March 2026)	AeroCoach bike-specific Ascalon adapters	Directly on top of the adapters	M6 button head 20mm
AeroCoach Elite titanium Ascalons with removable grippers (launched March 2026)	AeroCoach bike-specific Ascalon adapters that don't allow plate installation between Ascalons and adapters e.g. Canyon CFR monopost	Between arm rests and Ascalons	M5 button head 18mm
AeroCoach Angles extensions with AeroCoach 22.2mm clamps	AeroCoach 22.2mm clamps	Between arm rests and clamps	M5 button head 18mm
Other	Adapters that will accommodate a flat carbon plate to be placed between extensions and extension mounting surface, or between arm rests and extensions. The surfaces that are in contact with the Selachii carbon plate should be smooth (no protrusions into the carbon plate).	Between extensions and extension mounting surface, or between arm rests and extensions / extension clamps	Bolts are not provided – please refer to manufacturer's instructions to ensure the correct type of bolt is used and that there is sufficient thread engagement

2. Selachii installation on carbon plate:

1. Please refer to the diagrams below for installation steps. Recommended torque for all bolts is 4-5Nm, apart from the bottle cage bolts (2-3Nm) and the M4 countersunk bolt installed in step 2 (2Nm).
2. 5 x 10mm optional stackers are included with the Selachii mount. For no stackers in place, the M5 35mm cap head bolts should be used in step 2 below. 10mm longer bolts (provided) should be used for each additional stacker installed.





Item	Quantity	Description
1	2	Countersunk bolt M5 12mm
2	1	Carbon plate
3	1	Tilt adapter - Base
4	1	Tilt adapter - Top
5	1	Bolt carrier
6	2	Countersunk Bolt M6 30mm
7	5	10mm stackers
8	1	Storage Compartment- Base
9	1	Storage Compartment - Top
10	2	Cap head bolt M5 35-85mm (10mm increments)
11	4	Button head bolt M5 16mm
12	1	Threaded insert
13	1	Countersunk bolt M4 14mm
14	2	Bottle cage

Please check your equipment before each ride - if you see any damage then you should not use the bicycle until it has been inspected.

All metal components should be cleaned with bicycle-specific cleaner, wiped clear of excess moisture and left to air dry after each use to prevent oxidation of metal caused by sweat or energy products.

AeroCoach LTD does not accept any liability for issues arising due to non-compliance of these instructions. If you are unsure about the setup of your Selachii BTA mount, please contact customerservice@aero-coach.co.uk