



# **CANADIAN GOLD** **RESOURCES LTD**

**High-Grade Gold in Québec's Gaspé Peninsula**

**Corporate Presentation**

**January 2026**

 **TSXV: CAN**



# Disclaimer

---

This corporate presentation (the “presentation”) was prepared as a summary overview only of the current affairs of Canadian Gold Resources Ltd. (“Canadian Gold Resources” or the “Company”) and was not prepared for the purpose of assisting prospective investors in making a decision to invest in the Company. The Company does not make any representation as to the completeness, truth or accuracy of the information contained in this presentation. The Company expressly warns readers not to rely on the information herein for investment or other related purposes. Accordingly, any use of this information is at your risk and without liability to the Company. The information contained herein is not and should not be construed as either a public or private offer or solicitation to purchase securities in the capital stock of Canadian Gold Resources. The reader is referred to his/her professional investment advisor regarding investment related decisions respecting the securities of the company.

## Forward-Looking Information

This presentation contains “forward-looking statements” within the meaning of applicable Canadian securities regulations. Forward-looking statements are frequently characterized by words such as “plan”, “expect”, “project”, “intend”, “believe”, “anticipate”, “estimate” and other similar words, or statements that certain events or conditions “may” occur. Accordingly, all statements other than statements of historical fact herein, including, without limitation, statements regarding exploration plans and other future plans and objectives, are forward-looking statements that involve various risks and uncertainties. There can be no assurance that such statements will prove to be accurate and future events and actual results could differ materially from those anticipated in such statements.

Important factors that could cause actual results to differ materially from our expectations as well as a comprehensive list of risk factors are disclosed in the Company’s documents filed from time to time via SEDAR+ with the Canadian securities regulatory authorities and whose policies the Company is bound. Forward-looking statements are based on the estimates and opinions of management on the date the statements are made, and we do not undertake any obligation to update forward-looking statements should conditions or our estimates change, other than as required by law. Readers are further advised not to place undue reliance on forward-looking statements. Although the Company has attempted to identify important factors that could cause actual results to differ materially from those contained in forward- looking statements, there may be other factors that cause results not to be as anticipated, estimated or intended. There can be no assurance that such statements will prove to be accurate, as actual results and future events could differ materially from those anticipated in such statements. Accordingly, readers should not place undue reliance on forward-looking statements. The Company does not undertake to update any forward-looking statements that are contained herein, except in accordance with applicable securities laws.

## Cautionary Note Regarding Technical Information

The technical information in this presentation has been prepared in accordance with Canadian regulatory requirements as set out in National Instrument 43-101 - standards of disclosure for mineral projects (“NI 43-101”) and has been reviewed and approved by the company’s qualified person (as such term is defined in NI 43-101), Mark Smethurst P.Geo. Such information is based on assumptions, qualifications and procedures which are not fully described herein. Reference should be made to the full text of these technical reports and other disclosures which are filed under the company’s profile on SEDAR+ at [www.sedarplus.ca](http://www.sedarplus.ca).



# Forward-looking Statements

This presentation contains forward-looking statements and forward-looking information (collectively, “FLI”) within the meaning of applicable Canadian securities legislation. FLI is based on the current expectations, estimates, projections, and assumptions as of the date of this presentation. All statements, other than statements of historical fact, included herein are FLI and involve various risks, uncertainties, and assumptions. Generally, FLI can be identified by terminology such as “expects,” “anticipates,” “believes,” “estimates,” “plans,” “intends,” “predicts,” “projects,” “seeks,” “potential,” “targets,” or similar expressions suggesting future outcomes or statements regarding an outlook. FLI includes, but is not limited to, statements regarding the Company’s exploration activities, anticipated economic assessments, projected production, operating costs, capital costs, potential revenues, and other forward-looking metrics related to the Lac Arsenault Project.

FLI is provided to help readers understand management’s current expectations and is not a guarantee of future results. FLI is subject to various known and unknown risks, uncertainties, and other factors that may cause actual results to differ materially from those expressed or implied by such FLI. These risks include, but are not limited to, the accuracy of mineral grade estimates, metallurgical recovery rates, gold price fluctuations, foreign exchange rate volatility, unforeseen technical or operational challenges, regulatory changes, environmental risks, community and governmental actions, and the ability of the Company to secure required funding and approvals.

While management believes the assumptions and expectations reflected in the FLI are reasonable as of the date of this presentation, no assurance can be given that such expectations will prove correct, and actual outcomes may vary materially. Readers are cautioned not to place undue reliance on FLI. The Company will only update or revise any FLI in accordance with applicable law, whether as a result of new information, future events, or otherwise and may even withdraw such FLI if it feels that such action is warranted. Such updates, revisions or withdrawals of FLI will be disclosed in such manner as required by law..

The assumptions upon which the FLI is based include, but are not limited to, geological data, historical exploration results, economic conditions, market demand for gold, and the accuracy of fixed contractual cost estimates. Additional risks and uncertainties regarding the Company’s business are outlined in the Company’s public disclosure documents available at [www.sedarplus.ca](http://www.sedarplus.ca).





# Building Value in a High-Grade, Under-Explored Gold Belt

## High-Grade Gold in Quebec

All projects are known to contain high-grade gold mineralization & are along the prolific Grand Pabos Fault system



## Proven Management Team

CEO founded Major Drilling; VP Exploration credited with two gold discoveries



## Supported by Excellent Infrastructure

Port, rail, paved highways, & skilled workforce all within ~70 km of projects



## Aligned Interests with Shareholder

Management & insiders own 28% of outstanding shares



## Significant Catalysts

Maiden drill program underway, & 5,000 t bulk sample program to commence in spring 2026

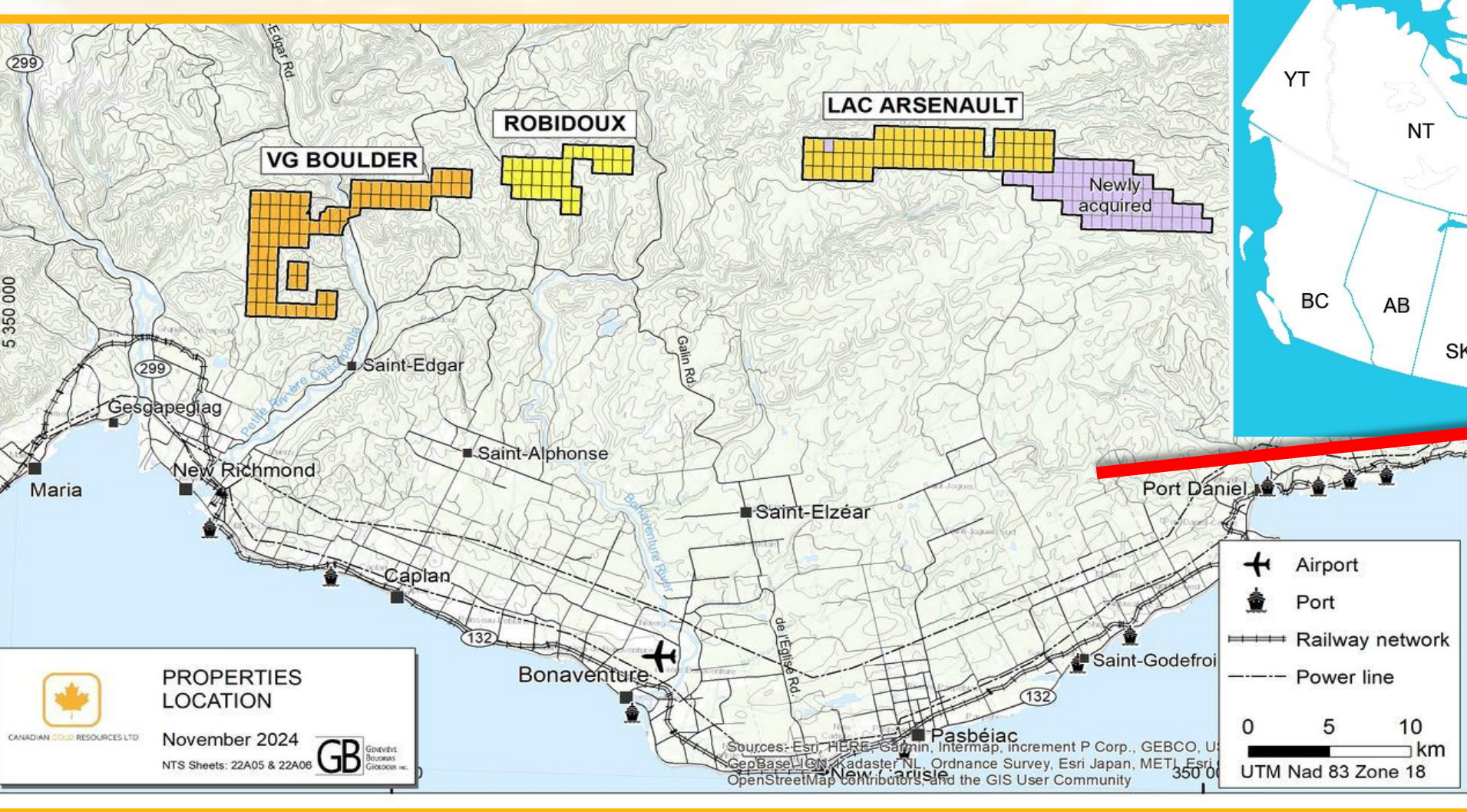


## High-Grade Antimony

Significant by-product potential, with values of up to 15% Sb identified



# Canadian Gold Resources' Properties



## Infrastructure

- Highway: 50 km
- Rail: ~70 km
- Port: ~70 km
- Regional airport: ~70 km
- Skilled workforce: ~70 km



## Land Position Spans ~35 Kms Along the Pabos Fault

### Highly Prospective Geological Setting for Epithermal Gold Mineralization

- **Supporting Surface & Drill Evidence:** High-grade gold, silver, antimony & lead values identified in both surface samples & drill core confirm the epithermal model and demonstrate a robust mineralizing system
- **Major Structural Controls:** The area is intersected by two major strike-slip faults, creating a network of fractures—**structural mesh**—from which evolved through-going faults that served as conduits for epithermal, gold-bearing hydrothermal fluids
- **Dilation Zones Create Traps for Mineralization:** Where faults intersect or bend, the resulting dilation zones—natural openings in the rock—provide ideal sites for the deposition of high-grade epithermal gold mineralization, often accompanied by silver & lead
- **Geological Analogues:** The alteration patterns & host rock geology are consistent with those seen in known high-grade epithermal gold systems, further reinforcing the exploration potential



# High-Grade Opportunity in an Underexplored Region

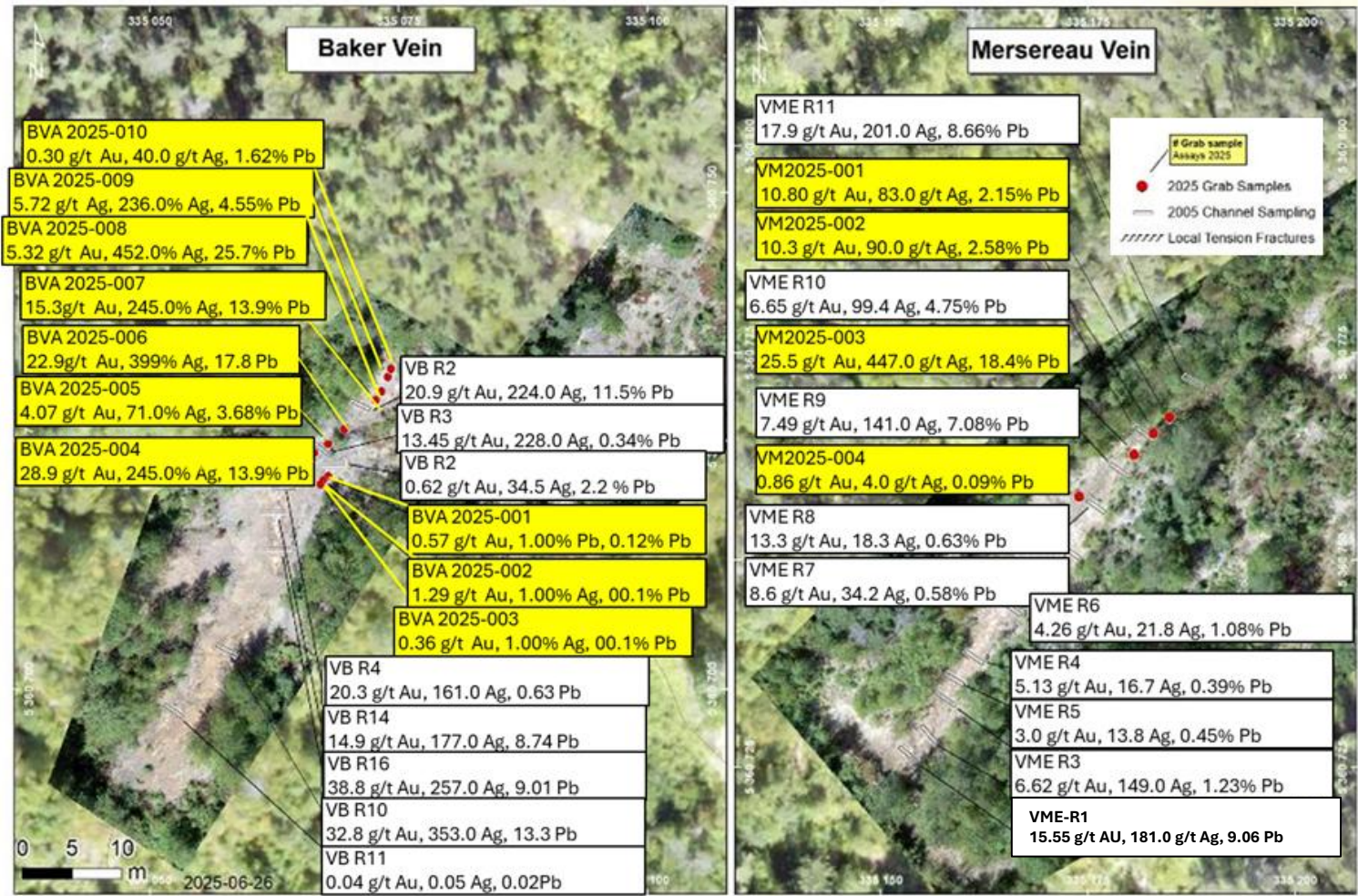
- **Early Exposure to a High-Potential Land Package**
  - High-grade gold mineralization confirmed across properties
  - Geological setting hosts multiple targets analogous to the structure containing a 61,000 oz @ 9.59 g/t gold historical resource (*non-compliant with NI 43-101 reporting\**)
  - 3 land packages totaling ~16K hectares (acres) located along the prolific Pabos Fault system in Quebec's Peninsula





# Lac Arsenault – High-Grade Gold & Silver

- 100%-owned, 8,111 hectares (20k acres)
- Historical estimates
  - Explored by Imperial & Esso Minerals who identified estimates of 40,000 t @ 15.55 g/t Gold, 197.00 g/t Silver, 6.6% Lead & 3.5% Zinc in 3 veins exposed at surface (non-compliant with NI 43-101 reporting standards\*)
  - Re-evaluated in a 1996 report to 200,000 t @ 9.59 g/t Gold containing a 61,000 oz historical resource (non-compliant with NI 43-101 reporting\*)
- Estimated surface footprint of historical resource represents only ~0.01% of land position\*





# Lac Arsenault – Recent Work Confirms High Grades

- Q3/25 surface sampling results:
  - BVA2025-004: **28.9 g/t Gold, 306 g/t Silver**
  - BVA2025-006: **22.9 g/t Gold, 399 g/t Silver**
  - VM2025-003: **25.5 g/t Gold, 447 g/t Silver**
  - BVA2025-008: **5.32 g/t Gold, 452 g/t Silver**
- In Q2/25 discovered new vein structure ~500 m NW of the Baker Vein
  - 3 separate gold-bearing veins discovered to date
- Airborne magnetic survey confirmed prospectivity of the Grand Pabos Fault corridor
  - Identified multiple major fault structures, including the Grand Pabos Fault
  - Structures are highly favorable for gold & silver mineralization
  - Findings directly inform exploration strategy & support continued project advancement

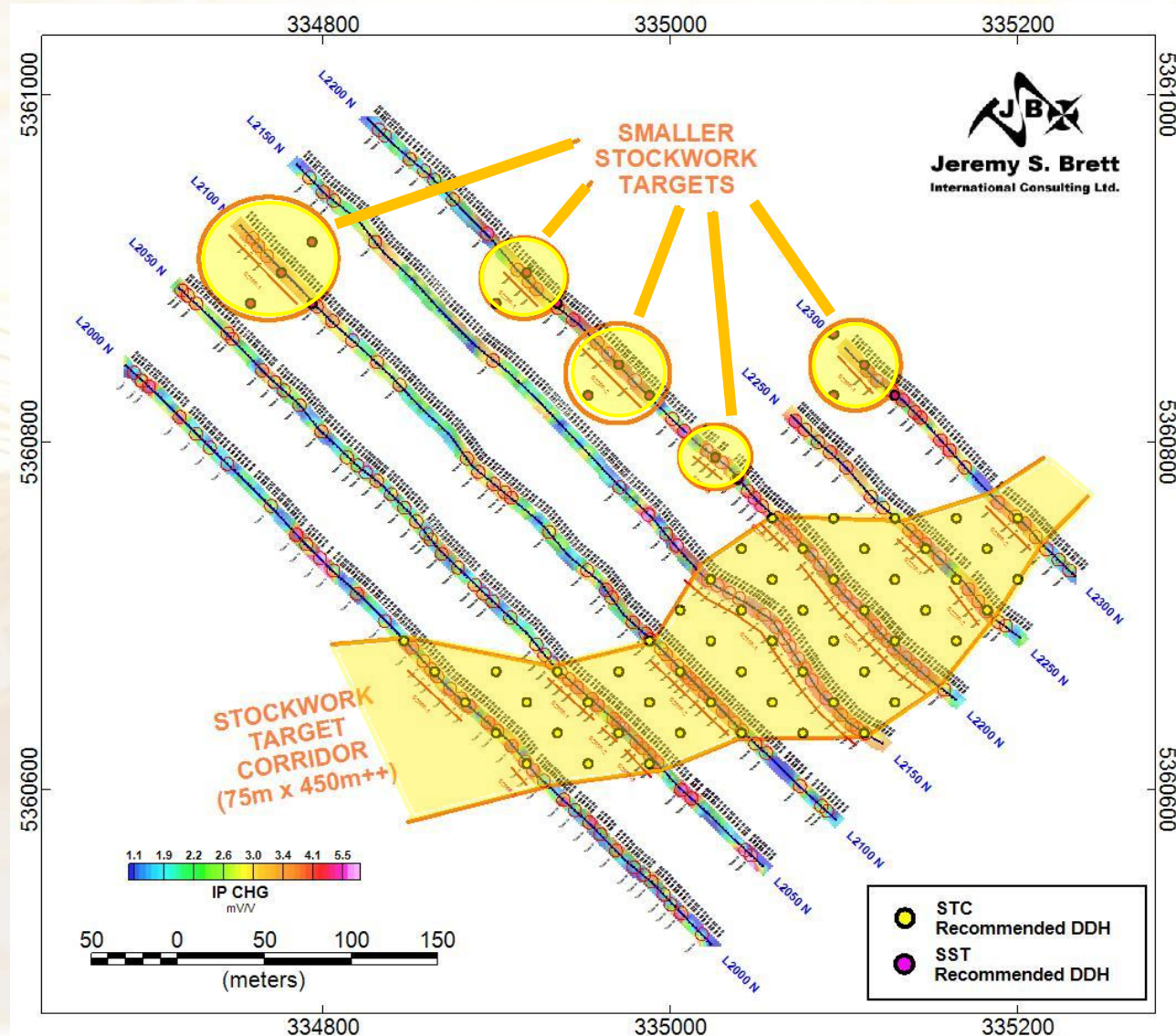
## New Vein Structure Discovered at Lac Arsenault





# Maiden >60 Hole / ~6,000 m Diamond Drill Program Underway

- Application to amend permits submitted to expand the maiden drill program
- IP survey reveals multiple high-priority vein & Stockwork Targets
  - New targets support a larger, more aggressive Phase-1 Drill Campaign
  - Tight-spaced IP work identifies signatures comparable to the high-grade Baker Vein
- Targets concentrated within the near-surface Stockwork Target Corridor (0–30m depth)





## Robidoux – Historic Work Shows High-grade Gold

- 100%-owned, 1,940 hectares (4,794.84 acres)
- Historical trench sampling returned high-grade gold values, including:
  - 92.0 g/t Gold over 1.70m
  - 45.9 g/t Gold over 3.10m
  - 19.9 g/t Gold over 3.10m
- Historic bulk sampling also yielded high-grade gold
  - 400 t avg @ 31.54 g/t Gold recovery
  - 657 t avg @ 12.02 g/t Gold recovery





# Robidoux - Well-Defined Structural Targets Identified

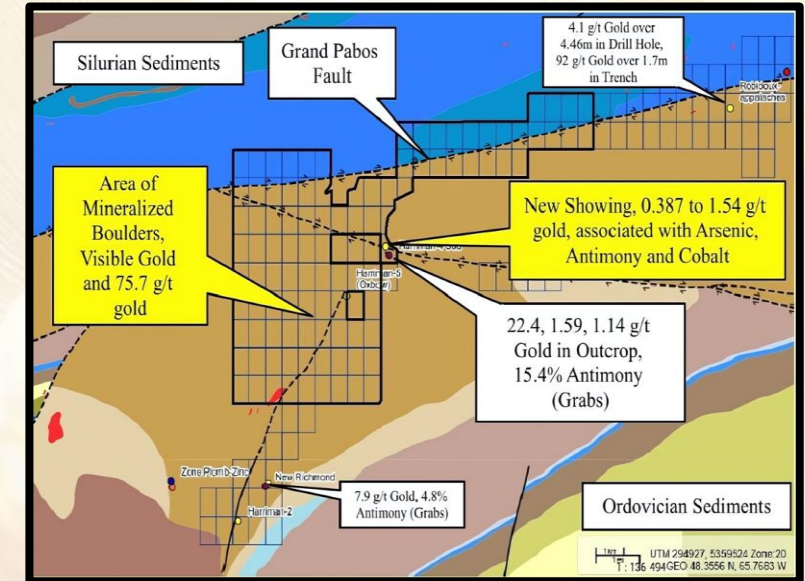
- **Airborne magnetic survey completed Q1/25**
  - Identified key fault structures aligned with known mineral showings
  - Confirmed potential for new gold and silver discoveries along the Grand Pabos Fault system
  - Provided valuable structural insights, increasing confidence in the property's prospectivity
- **Next Steps**
  - Sampling & trenching to locate high-priority drilling targets & bulk sample target
  - Follow-up drilling to test high-grade zones of known vein systems
  - Potential target for next bulk sample (2026)





## VG Boulder - High-Impact Structural Targets Identified

- 100%-owned, 5,787 hectares (14,300 acres)
- **Multiple historical visible gold occurrences**
  - Surface sample assays of 75.7 g/t Gold from boulder in 2021
  - Gold showing of 22.4 g/t Gold & 15.4% antimony
  - Multiple visible gold shows from boulders
- **Airborne magnetic survey highlights:**
  - Structural intersections identified, including the convergence of the Grand Pabos & Rivière Garin Faults
  - Intersections considered highly prospective for mineralization
  - Represent compelling new exploration targets for follow-up work





# Highly Experienced Management Team



**Ronald Goguen, Sr.**

***Chairman, President & CEO***

Ronald is a founder of Canadian Gold Resources & a respected leader in the mining industry with over 40 years of experience. Founder, Former President, CEO & Chairman of both Major Drilling International (TSX: MDI) & the Beaver Brook Antimony Mine.



**Mark Smethurst, P.Geo**

***Director, Technical Manager***

Mark is a founder & an accomplished geologist with over 25 years of experience in multiple geological environments from discovery to development to mine stage. Qualified Person (GP) Geologist who holds a B.Sc. in Geology & a M.Sc. in Physics & Geology.



**Camilla Cormier, CPA**

***Chief Financial Officer***

Camilla has 30+ years of financial leadership, including 14 in public mining companies. She specializes in budgeting, financial reporting, & GAAP/IFRS. A Université Laval graduate, she is bilingual & serves as a director at the Greater Moncton Roméo LeBlanc International Airport.



**Ken Chernin, MBA**

***VP, Corporate Development***

Ken has over 20 years of combined experience as a sell-side equity research analyst & heading investor relations for NYSE & TSX companies, including IAMGOLD Corp. He has an MBA from the Joseph L Rotman School of Management at the University of Toronto.





## Diverse & Independent Board of Directors



**Roger Bourgault, B.Sc.A.**

Roger, with a B.Sc.A. in Computer Science (1986) and a Master's in Project Management (1998) from UQAM, has managed multimillion-dollar projects across diverse sectors since 1991. His clients include Bombardier, BNC, Desjardins, & Bell Canada. He has served as Director of Amseco Exploration Ltd since 2006 & Chairman since 2011.



**David J. Hennigar**

Chairman at Thornridge Holdings, Annapolis Group, & Grand River Ironsands. Vice Chairman at Medx Health. Formerly with Crombie REIT, Crownx, Scotia Investments, Assisted Living Concepts, & Director of Highliner Foods. Treasurer of the Art Gallery of Nova Scotia and IWK Children's Hospital. Governor, Dalhousie University.



**Ian McGavney**

President & CEO of Colibri Resource Corp. Founder & past President of Skye Capital Corporation & Northern Lorena Resources. 20+ years of experience in junior resource business development, company operations, finance, and marketing.

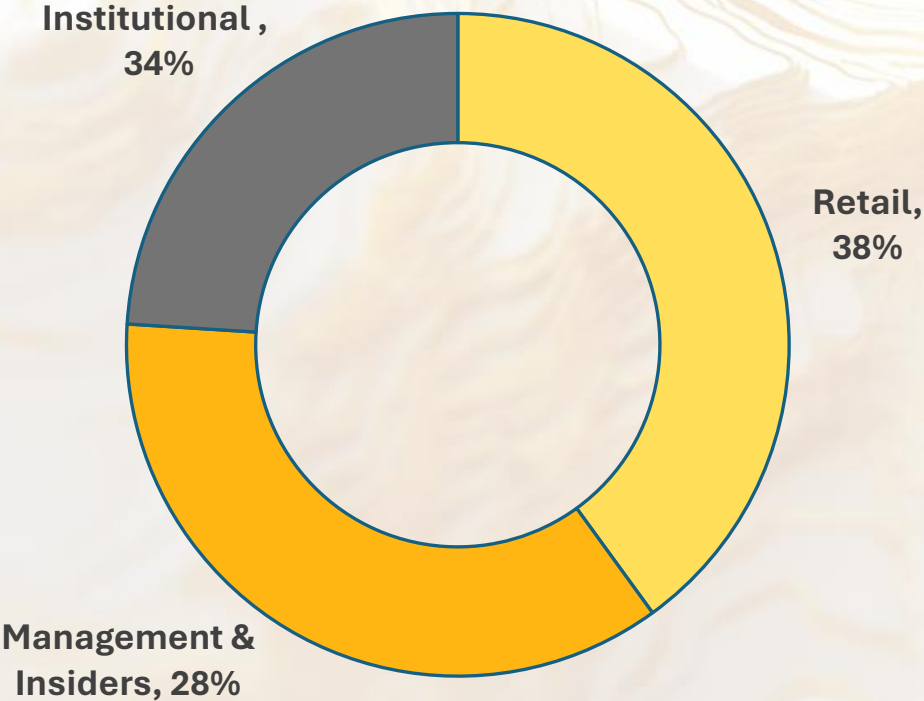
**Ronald Goguen, Sr.  
&  
Mark Smethurst, P.Geo  
See Previous Slide**





# High Insider Ownership

Shares Outstanding (Basic)	47,868,876
Warrants	15,739,878
Options	2,063,000
<b>Fully Diluted</b>	<b>65,671,754</b>





# Upcoming Catalysts

---

## Q4 2025

- Maiden diamond drill program at Lac Arsenault
- New target generation from IP & geophysical surveys to guide next-phase drilling

## Q1 2026

- Assay results from Lac Arsenault drill program
- Integration of 2025 drill results with IP & geophysical data to design follow-up drill program & advance exploration at Lac Arsenault

## Q2 2026

- 5,000-tonne bulk sample at Lac Arsenault
- Fieldwork at Robidoux & VG Boulder to validate targets & collect surface samples







**CANADIAN GOLD**  
RESOURCES LTD



(506) 383-4274



[cdngold.com](http://cdngold.com)



[rongoguen@cdngold.com](mailto:rongoguen@cdngold.com)



Suite 700 - 105 Englehart  
Street  
Dieppe, New Brunswick  
E1A 8K2 Canada



TSXV: CAN | [cdngold.com](http://cdngold.com)