

YOUR ADVANCED RELOCATION GUIDE

Living in Wilmington

**REAL ESTATE
INSIGHTS**

**NEW VIDEOS
EVERY WEEK**

SUBSCRIBE

**What to Expect for
HOUSING & TAXES
in Wilmington**

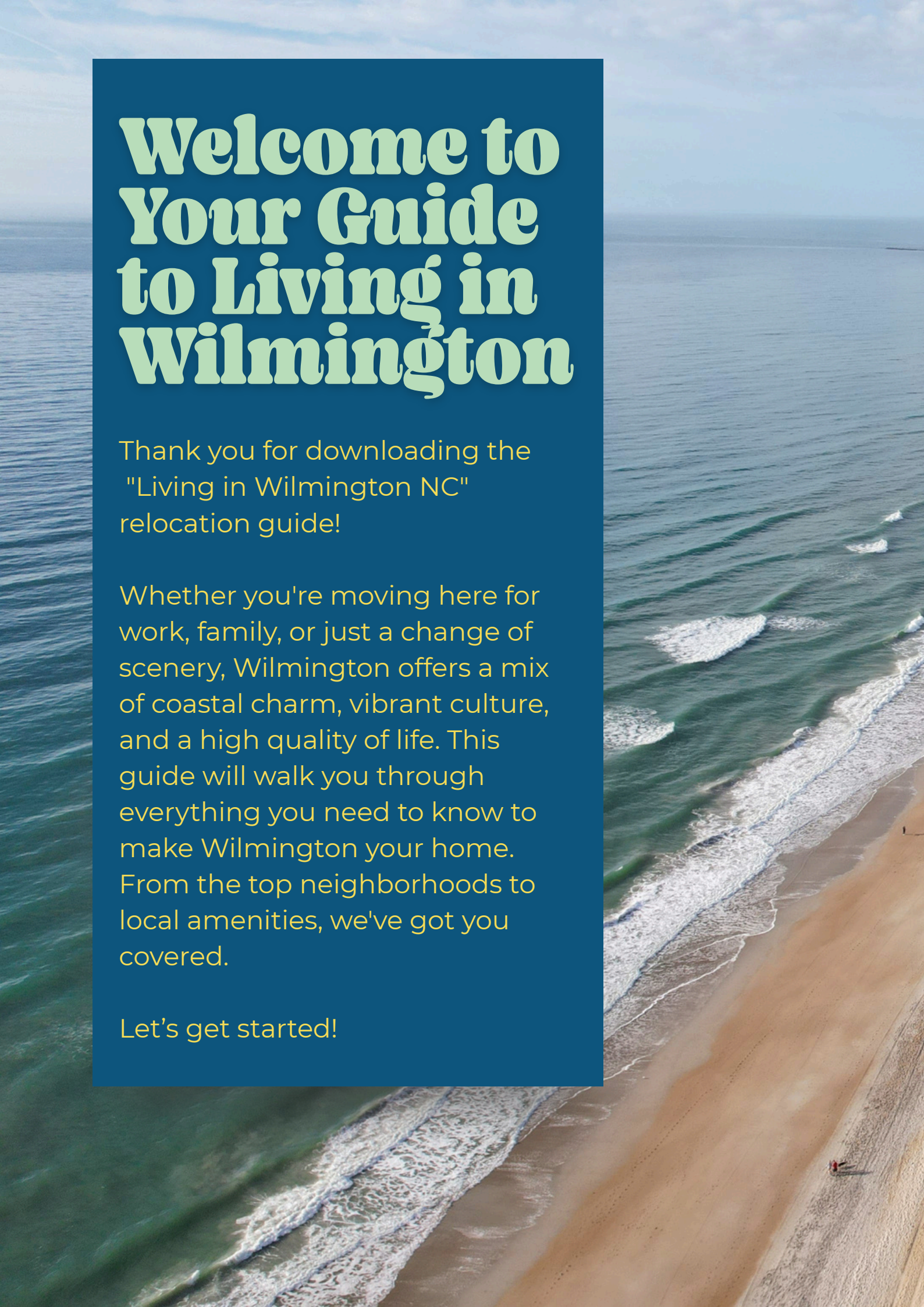


Welcome to Your Guide to Living in Wilmington

Thank you for downloading the
"Living in Wilmington NC"
relocation guide!

Whether you're moving here for work, family, or just a change of scenery, Wilmington offers a mix of coastal charm, vibrant culture, and a high quality of life. This guide will walk you through everything you need to know to make Wilmington your home. From the top neighborhoods to local amenities, we've got you covered.

Let's get started!



An aerial photograph of a coastal town in North Carolina. On the left, a wide, sandy beach stretches along the ocean, with gentle waves lapping at the shore. A long pier extends into the water in the distance. To the right of the beach, a dense residential area is visible, featuring a mix of single-story bungalow-style houses and larger, multi-story modern buildings. Some houses have light-colored siding and dark roofs, while others are more contemporary with flat roofs and large windows. The sky is a clear, pale blue with a few wispy clouds. A dark blue rectangular box is overlaid on the right side of the image, containing white and yellow text.

Why Move to Wilmington, NC?

Wilmington, NC is known for its rich history, beautiful waterfront, and welcoming atmosphere. Located on the southeastern coast of North Carolina, Wilmington offers a combination of urban sophistication and small-town charm. It's perfect for those seeking a relaxed coastal lifestyle, with easy access to nearby beaches, a thriving arts scene, and top-notch dining.

With a growing economy and excellent schools, Wilmington is the perfect place to call home.

Understanding Wilmington's Cost of Living: A Breakdown



Wilmington offers a reasonable cost of living compared to larger cities like Charlotte or Raleigh.

Here's a breakdown of major expenses:

Taxes:

- **Income Tax:** North Carolina has a flat income tax rate of 5.25% (as of 2023).
- **Sales Tax:** The state sales tax rate is 4.75%, but with local taxes, it totals 7% in Wilmington.
- **Property Taxes:** New Hanover County's average property tax rate is about \$0.58 per \$100 of assessed value.

Housing Costs:

Median home price in Wilmington is \$350,000, which is significantly lower than larger cities in NC.

Utilities:

Expect to pay around \$180 per month for essential utilities like electricity, water, and garbage.



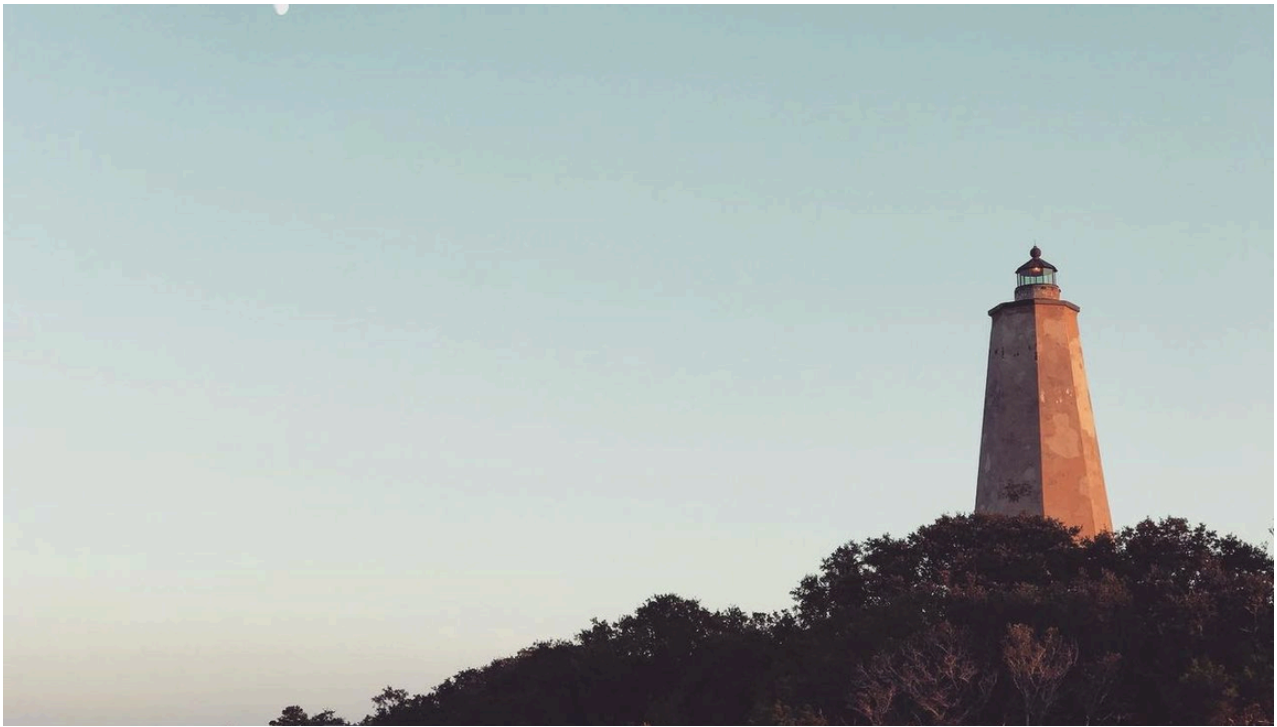
A Guide to Wilmington's Housing Market

Wilmington's real estate market is a blend of historic homes, new developments, and beachfront properties.

The city offers diverse housing options, from downtown condos to sprawling waterfront estates. Whether you're a first-time homebuyer or looking for a luxury property, Wilmington offers something for everyone.



DAY DOCKS
AT GARDNER LAKE



A Snapshot of Wilmington's Population and Neighborhoods

Wilmington is located in New Hanover County, NC. Here's an overview of the demographics:

Bald Head Island is a small, affluent community with a median home price of \$1.38 million, offering a tranquil, car-free environment.

Carolina Beach, with a more vibrant, beachside community, has a population of 9,619 and a median home price of \$487,800, attracting families and seasonal residents.

Castle Hayne, with its peaceful rural charm, has a smaller population and affordable homes, while Figure Eight Island is an exclusive, gated community with luxury homes averaging \$6.52 million.

Hampstead, known for its suburban coastal living, appeals to families with a growing community and a median home price of \$395,900.

Historic Downtown

Wilmington is a vibrant urban district with a mix of history and modern amenities, with a median home price of \$640,000.

Other areas such as Holden Beach, Leland, and Myrtle Grove are popular for their quieter, suburban lifestyles, affordable housing, and proximity to Wilmington, attracting families and retirees.

Coastal spots like Oak Island, Ocean Isle Beach, and Porters Neck offer a blend of beachfront living with upscale amenities, drawing those seeking both relaxation and luxury.

Southport, with its historic charm, is a small town with a thriving arts community, while Topsail Island offers serene beaches and a quieter, island life.

Wilmington, the region's hub, is a bustling port city with a population of 125,000, known for its cultural vibrancy and coastal appeal.

Wrightsville Beach, with its water sports and luxury living, completes the region's coastal allure.

Each area presents a distinct vibe, from rural, family-friendly suburbs to exclusive beach communities, offering a wide range of living options for potential residents.

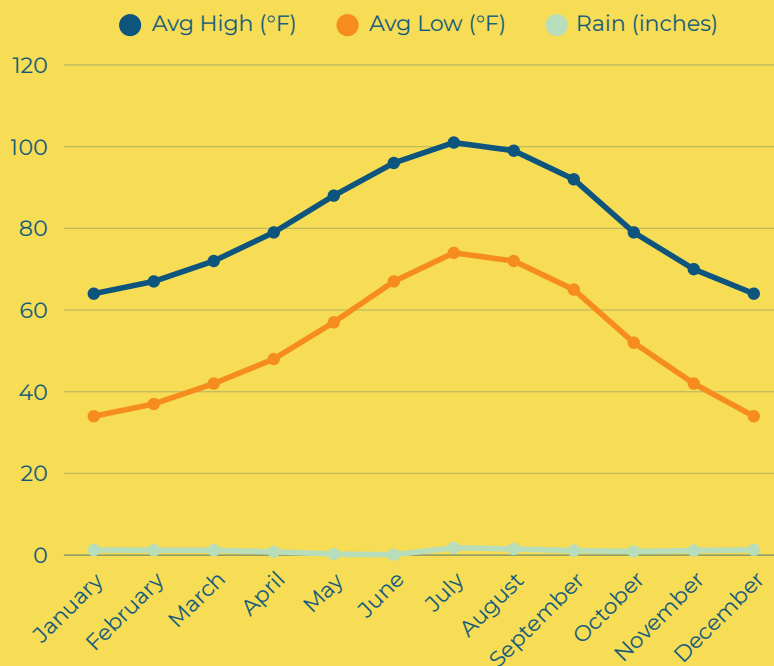


How Wilmington's Climate Affects Your Living Experience



Wilmington enjoys a temperate climate, characterized by warm summers and mild winters.

The best time to visit Wilmington is in the spring (April to June) or fall (September to November), when temperatures are mild, and the beaches are less crowded.





Stay Connected and Subscribe to our Youtube Channel!



C

Wilmington, NC: Your Guide to the Best of Coastal Living

Local Neighborhood Tours
Market Updates
Home Buying Tips
Tampa Lifestyle Content



Explore Our Interactive Map

Use our interactive map to explore the vibrant neighborhoods and surrounding cities of Wilmington North Carolina.



Explore More



Where to Shop in Wilmington: A Local's Guide

Wilmington offers a variety of shopping options from local boutiques to major shopping centers like Mayfaire Town Center. Whether you're looking for coastal fashion or everyday essentials, Wilmington's shopping areas have it all.

Mayfaire Town Center

Located in the heart of Wilmington, Mayfaire Town Center is a premier shopping destination with a wide variety of shops, restaurants, and entertainment options. From high-end retail stores to local boutiques, it offers something for everyone. The center also features a movie theater and outdoor spaces for community events.



Historic Downtown Wilmington

For those seeking unique, locally-owned shops, Historic Downtown Wilmington is the perfect spot. The area features a mix of antique stores, art galleries, boutiques, and specialty shops. Strolling along the cobblestone streets, visitors can enjoy a charming, old-world shopping experience with plenty of cafés and restaurants to explore.



Independence Mall

Independence Mall is a traditional shopping center with a broad selection of retailers, including major department stores and specialty shops. It's perfect for shoppers looking for a mix of casual and trendy options, as well as convenient access to local dining and entertainment.



Top Restaurants You Can't Miss in Wilmington

Wilmington is known for its vibrant dining scene. Whether you're craving fresh seafood or southern comfort food, Wilmington has plenty of restaurants to suit every taste.



Catch Restaurant

Located on the riverfront, Catch Restaurant offers a casual yet upscale dining experience with an emphasis on fresh seafood. The menu features locally sourced dishes, including oysters, shrimp, and fish, as well as creative cocktails. The outdoor patio provides beautiful views of the Cape Fear River, making it a great spot for sunset dining.

The Oceanic

Situated on Wrightsville Beach, The Oceanic is known for its oceanfront views and delicious seafood. Famous for its signature dishes like the shrimp and grits and clam chowder, The Oceanic offers a laid-back atmosphere with both indoor and outdoor seating. It's perfect for a relaxed meal by the beach.



Wilmington's Farmers Market & Local Eateries

Held at the Brooklyn Arts District, the Wilmington Farmers Market is a must-visit for foodies. Beyond the fresh produce, there are local food stalls offering everything from tacos to gourmet coffee. The surrounding area also features casual dining spots with a focus on locally-sourced ingredients.



Top Wilmington Events You Can't Miss

Wilmington offers a wide range of activities from scenic boat tours to historic sites and cultural events. The city hosts annual events like the Wilmington Riverfest and the North Carolina Azalea Festival, which showcase local arts, music, and culture.



Wilmington Riverwalk



The Wilmington Riverwalk is one of the city's top attractions, offering scenic views of the Cape Fear River. This 1.75-mile stretch is lined with local shops, restaurants, and galleries, making it perfect for a leisurely stroll. The Riverwalk also hosts seasonal events like live music and festivals, creating a vibrant atmosphere.

North Carolina Azalea Festival


One of Wilmington's most popular events, the North Carolina Azalea Festival is held annually in April. The event celebrates the blooming of azaleas with a series of garden tours, parades, art shows, and concerts. It's a family-friendly festival that brings the community together to enjoy the beauty of the flowers and the spirit of Wilmington.



Wrightsville Beach Watersports

For those who love water activities, Wrightsville Beach offers some of the best opportunities for surfing, kayaking, and paddleboarding. The beach is known for its gentle waves and clear waters, making it perfect for both beginners and experienced surfers. Several local companies offer rentals and lessons for those looking to dive into watersports.





Education in Wilmington: A Guide to Local Schools

Wilmington is home to the University of North Carolina at Wilmington (UNCW), a top public university known for its academic excellence and strong community involvement. The city also has a variety of highly-rated public and private schools for children.

University of North Carolina Wilmington (UNCW)

UNCW is the largest university in Wilmington and a major part of the city's educational landscape. It offers a wide range of undergraduate, graduate, and doctoral programs, with strong schools in marine biology, business, and education. The university is also known for its beautiful campus, which overlooks the Intracoastal Waterway, providing students with a vibrant academic environment and excellent recreational opportunities.

Cape Fear Community College (CFCC)

CFCC is a public community college offering associate degrees and certificate programs in a variety of fields. Known for its strong technical and workforce development programs, CFCC provides an affordable option for students looking to enter the workforce quickly or continue their education at a four-year university. It also offers continuing education programs for adults seeking new skills or certifications.

Wilmington Christian Academy

Wilmington Christian Academy provides a faith-based private education for students from preschool through high school. The school offers a rigorous academic curriculum, as well as spiritual development, in a supportive community environment. It's a popular choice for families seeking a private school option in the Wilmington area.



Where to Get Medical Care in Wilmington

Wilmington boasts several healthcare facilities, including New Hanover Regional Medical Center, a large hospital offering a wide range of services, from emergency care to specialized treatments.

New Hanover Regional Medical Center (NHRMC)

New Hanover Regional Medical Center is the flagship hospital in Wilmington and one of the largest healthcare providers in the region. NHRMC offers a comprehensive range of services, including emergency care, cancer treatment, cardiology, and surgery. The hospital is also home to a renowned trauma center and has received recognition for its advanced healthcare services.

Novant Health New Hanover Regional Medical Center (NHRMC) Cancer Center

Specializing in oncology, the NHRMC Cancer Center provides state-of-the-art cancer care, including chemotherapy, radiation therapy, and advanced surgical procedures. The center is known for its patient-centered care and comprehensive support services for cancer patients, from diagnosis through recovery.

Wilmington Health

Wilmington Health is a large medical group that offers a variety of healthcare services, including primary care, urgent care, specialty services, and diagnostic care. With multiple locations in the Wilmington area, Wilmington Health is known for its accessible, patient-focused care and commitment to keeping the community healthy.



Who's Hiring in Wilmington: A Guide to Major Employers

Wilmington is home to a diverse economy, with major employers spanning various industries, from healthcare to education and manufacturing. The area's job market is strong, providing a wide range of career opportunities.

Wilmington International Airport (ILM)

Wilmington International Airport is a key employer in the area, with a staff that includes pilots, ground crews, administrative staff, and security personnel. The airport plays a vital role in connecting Wilmington to major cities across the country, while providing employment in various aviation-related fields.

GE Hitachi Nuclear Energy

GE Hitachi Nuclear Energy is a major employer in the Wilmington area, specializing in the design, manufacturing, and maintenance of nuclear power plants. The company's presence in Wilmington provides a wide range of engineering, technical, and manufacturing jobs, contributing to the region's industrial and energy sectors.

DuPont

DuPont has a strong presence in Wilmington, particularly in the areas of chemical manufacturing and research. The company is involved in the development and production of a wide range of chemicals, materials, and solutions used in various industries. DuPont is a significant employer, providing both research and manufacturing jobs in the region.





Explore the Best Cities Near Wilmington: From Beachfront to Suburban Living



Jump to Communities



Bald Head Island

"Secluded Island Living"



Amenities

Bald Head Island is a unique, car-free community accessible only by ferry. It offers beaches, nature trails, and the historic Old Baldy Lighthouse. Golf carts are the primary mode of transportation, adding to the island's laid-back vibe.

Why Residents Love it

Residents love Bald Head Island for its tranquility, seclusion, and natural beauty. The car-free environment and peaceful beaches create a serene, resort-like lifestyle ideal for those seeking privacy and a break from the hustle and bustle of city life.

Notable Attractions

The beaches, nature reserves, and Bald Head Woods Reserve are top attractions. Old Baldy Lighthouse provides stunning panoramic views, while the island's natural beauty makes it ideal for kayaking, hiking, and beach activities.

Community Vibe

The community is exclusive, peaceful, and environmentally conscious. Residents value the connection to nature, the slower pace of life, and the tight-knit feel of this unique island community.



POPULATION

149



MEDIAN HOME
PRICE

\$1.38
million



SCHOOL
DISTRICT

Brunswick
County Schools



PUBLIC TRANSIT

Golf carts, no
public transport

Carolina Beach

“Vibrant Beachfront Community”



Amenities

Carolina Beach offers a lively boardwalk, numerous beachfront parks, and plenty of outdoor activities. With seasonal markets, restaurants, and access to nearby Carolina Beach State Park, the area is perfect for those looking to enjoy both nature and city conveniences.

Notable Attractions

The Carolina Beach Boardwalk is one of the area's most popular attractions, with shops, restaurants, and amusement rides. Carolina Beach State Park offers hiking and camping opportunities, and the Fort Fisher Historic Site provides Civil War-era exhibits and beautiful views.

Why Residents Love it

Carolina Beach is loved for its laid-back atmosphere and easy access to beautiful beaches. The vibrant community, local events, and year-round activities like fishing and kayaking make it a great place for those seeking a fun yet peaceful beach lifestyle.

Community Vibe

The community in Carolina Beach is friendly and welcoming, with a mix of seasonal visitors and year-round residents. There's a strong emphasis on outdoor activities, with frequent community events that bring people together.



POPULATION

9,619



MEDIAN HOME
PRICE

\$487,800



SCHOOL
DISTRICT

New Hanover
County Schools



PUBLIC TRANSIT

Wave Transit
buses

Castle Hayne

*"Rural Charm Near
Wilmington"*



Amenities

Castle Hayne offers a peaceful rural lifestyle with parks, local businesses, and easy access to Wilmington. Residents enjoy a quiet atmosphere with large properties and proximity to the Cape Fear River, ideal for boating and outdoor activities.

Why Residents Love it

Castle Hayne is perfect for those looking for affordable housing in a rural setting but still want to be close to the amenities of Wilmington. The natural surroundings and sense of space make it a great place for families and those seeking privacy.

Notable Attractions

The River Bluffs community offers recreational amenities like a marina, walking trails, and parks. The Castle Hayne Depot is a historic landmark, providing insight into the area's past as a railroad town.

Community Vibe

The community is peaceful and family-oriented. Many residents enjoy a rural, laid-back lifestyle, with a strong sense of community and easy access to nature and Wilmington.



POPULATION

1,000



MEDIAN HOME
PRICE

\$326,700



SCHOOL
DISTRICT

New Hanover
County Schools



PUBLIC TRANSIT

Limited, personal
vehicles required

Figure Eight Island

"Exclusive Gated Community"



Amenities

Figure Eight Island is an exclusive, private community offering luxury homes, private beaches, and high-end amenities. The island provides gated access, a yacht club, and easy access to water activities like boating, fishing, and kayaking.

Notable Attractions

The private beaches are the main attraction, offering pristine shorelines and a tranquil environment. The Figure Eight Island Yacht Club hosts sailing events and social gatherings, while the island's secluded location adds to its appeal.

Why Residents Love it

Residents of Figure Eight Island enjoy an exclusive, high-end lifestyle with peace, privacy, and luxurious amenities. The island's tranquility and beauty make it a sought-after location for affluent individuals seeking an escape from busy life.

Community Vibe

The community is private, upscale, and serene. Figure Eight Island is a secluded, luxurious community, attracting those who value privacy, security, and a tranquil environment with access to high-end amenities.



POPULATION

87



MEDIAN HOME
PRICE

\$6.52
million



SCHOOL
DISTRICT

New Hanover
County Schools



PUBLIC TRANSIT

Private vehicles, no
public transport

Hampstead

“Coastal Suburban Living”



Amenities

Hampstead offers a suburban feel with waterfront properties and parks, as well as easy access to Wilmington’s amenities. The area features several recreational options, including nature reserves, parks, and golf courses, as well as growing shopping centers and restaurants.

Notable Attractions

The nearby Topsail Island offers scenic beaches and outdoor activities, while Hampstead Kiwanis Park provides walking trails, sports fields, and picnic areas. Surf City Pier, just a short drive away, is popular for fishing and enjoying the coastal views.

Why Residents Love it

Hampstead is loved for its more relaxed pace and affordable living while still being close to Wilmington. The area offers easy access to coastal recreation, natural surroundings, and a growing community, making it ideal for families and retirees.

Community Vibe

The community in Hampstead is family-oriented, quiet, and close-knit. It’s a suburban area that still offers a connection to nature, making it perfect for those who enjoy a peaceful environment while remaining close to city amenities.



POPULATION

7,871



MEDIAN HOME
PRICE

\$395,900



SCHOOL
DISTRICT

Pender County
Schools



PUBLIC TRANSIT

Limited public
transport, personal
vehicles required

Historic Downtown Wilmington

*"Charming Urban
District"*



Amenities

Wilmington's Historic Downtown offers a rich blend of modern living with historic charm. Residents enjoy the area's cobblestone streets, local shops, galleries, cafes, and excellent dining options.

Why Residents Love it

Residents love the combination of urban living with access to Wilmington's history, culture, and arts. The walkability, mixed-use environment, and access to events, parks, and restaurants make it a vibrant, social community.

Notable Attractions

The Wilmington Riverwalk offers picturesque views of the Cape Fear River, while the USS North Carolina Battleship Memorial is a major historical attraction.

Community Vibe

The community is diverse, artistic, and lively, with a mix of young professionals, retirees, and artists. The area thrives on its cultural heritage, with a focus on art, history, and entertainment, offering an exciting, active environment for all ages.



POPULATION

2,404



MEDIAN HOME
PRICE

\$640,000



SCHOOL
DISTRICT

New Hanover
County Schools



PUBLIC TRANSIT

Wave Transit
buses

Holden Beach

*"Quiet Beach
Retreat"*



Amenities

Holden Beach is known for its beautiful, uncrowded beaches, offering a laid-back, family-friendly environment. It has several parks, local restaurants, and shops, as well as beach access and community events that bring residents together.

Notable Attractions

Holden Beach Pier is a popular spot for fishing and sightseeing. The town's nature reserves and scenic waterways offer opportunities for kayaking, boating, and bird watching, while the surrounding area is great for outdoor activities.

Why Residents Love

Residents love Holden Beach for its peaceful, quiet atmosphere, and uncrowded beaches. The small-town charm, close-knit community, and slower pace of life are key factors for those seeking a relaxing coastal lifestyle.

Community Vibe

The community in Holden Beach is friendly and family-oriented. It's a place where neighbors know each other, and there's a strong emphasis on enjoying the outdoors and the quiet, scenic environment.



POPULATION

1,000



MEDIAN HOME
PRICE

\$350,000



SCHOOL
DISTRICT

Pender County
Schools



PUBLIC TRANSIT

Personal vehicles
required

Leland

“Coastal Suburban Living”



Amenities

Leland offers a variety of suburban amenities, including shopping centers, parks, and local schools. The area is known for its affordable housing, well-maintained public spaces, and proximity to Wilmington’s urban conveniences.

Notable Attractions

Leland is home to the Belville Riverwalk Park, which offers scenic views and a peaceful spot for outdoor activities. The nearby Brunswick Nature Park and water access points provide opportunities for hiking, kayaking, and bird watching.

Why Residents Love it

Residents love Leland for its quieter, more affordable living compared to Wilmington, while still being close to the city’s amenities. The community has a small-town charm but with the added benefit of access to nearby beaches and outdoor recreational areas.

Community Vibe

The community in Leland is growing rapidly but maintains a friendly, suburban vibe. It’s a great place for families, retirees, and those looking for a more peaceful lifestyle without sacrificing access to nearby Wilmington.



POPULATION

7,871



MEDIAN HOME
PRICE

\$500,000



SCHOOL
DISTRICT

New Hanover
County Schools



PUBLIC TRANSIT

Wave Transit
buses

Myrtle Grove

Tranquil Waterside Living



Amenities

Myrtle Grove offers a residential, suburban feel with easy access to Wilmington's downtown. The area features local parks, schools, and small shopping centers. It provides convenient access to outdoor activities like boating, fishing, and nearby beaches.

Notable Attractions

The nearby Masonboro Island is a popular natural preserve, accessible by boat, offering quiet beaches and wildlife. Pine Valley Park offers green space for outdoor activities like picnics, walking, and sports.

Why Residents Love it

Residents appreciate Myrtle Grove's quiet, suburban environment while still being close to Wilmington's urban amenities. The area is family-friendly, with easy access to parks, schools, and shopping, and is known for its calm atmosphere and spacious properties.

Community Vibe

Myrtle Grove has a laid-back, friendly atmosphere. It's a tight-knit community where families and retirees can enjoy suburban living with easy access to nearby beaches and Wilmington's cultural scene.



POPULATION

3,100



MEDIAN HOME
PRICE

\$395,000



SCHOOL
DISTRICT

New Hanover
County Schools



PUBLIC TRANSIT

Wave Transit
buses

Oak Island

Coastal Island Charm



Amenities

Oak Island offers a variety of amenities, including beach access, golf courses, and community parks. The area has a number of local shops, seafood restaurants, and grocery stores, providing everything residents need in a peaceful, coastal setting.

Notable Attractions

Oak Island is known for its beautiful, uncrowded beaches, which provide ample opportunities for sunbathing, swimming, and beachcombing. The Oak Island Lighthouse is a popular landmark, offering panoramic views of the area.

Why Residents Love it

Oak Island is loved for its relaxed pace of life and beautiful natural surroundings. Residents enjoy the quiet atmosphere, easy beach access, and strong sense of community. It's ideal for those looking for a peaceful coastal town with a focus on outdoor activities.

Community Vibe

The community is laid-back and family-friendly, with a strong sense of camaraderie among residents. Many people move here for the peaceful, slower-paced lifestyle, and the area fosters a close-knit, welcoming environment.



POPULATION

8,000



MEDIAN HOME
PRICE

\$525,000



SCHOOL
DISTRICT

New Hanover
County Schools



PUBLIC TRANSIT

Limited public
transport

Ocean Isle Beach

Secluded Beach Community



Amenities

Ocean Isle Beach offers a relaxed, coastal atmosphere with uncrowded beaches, local seafood restaurants, and seasonal events. The area also features parks and easy access to outdoor activities like fishing, kayaking, and boating.

Why Residents Love it

Residents enjoy the peace and quiet of Ocean Isle Beach. The town's small size, friendly community, and the close proximity to Wilmington make it ideal for those seeking a more relaxed, coastal lifestyle.

Notable Attractions

Ocean Isle Beach's main attraction is its wide, pristine shoreline. The Ocean Isle Fishing Center provides boat rentals and guided tours. The Museum of Coastal Carolina is perfect for learning about the local ecosystem and marine life.

Community Vibe

The community is small and tight-knit, with a focus on outdoor living and beach activities. The vibe is welcoming, and many residents enjoy participating in local events, such as festivals and fishing tournaments.



POPULATION

7,000



MEDIAN HOME
PRICE

\$400,000



SCHOOL
DISTRICT

Brunswick
County Schools



PUBLIC TRANSIT

Wave Transit
buses

Porters Neck

Exclusive Coastal Neighborhood



Amenities

Porters Neck is known for its upscale living and amenities, including luxury homes, golf courses, and access to the Intracoastal Waterway. It's a quieter, exclusive neighborhood with parks and plenty of green space for outdoor activities.

Notable Attractions

Porters Neck's access to the Intracoastal Waterway provides excellent opportunities for boating and water sports. The area also features top-tier golf clubs, including the Porters Neck Country Club, offering an ideal place for recreation.

Why Residents Love it

Residents love the privacy and exclusivity of Porters Neck. The neighborhood provides a serene and upscale lifestyle with close access to Wilmington, making it ideal for those who appreciate luxury living and tranquility.

Community Vibe

The community vibe is upscale, with a focus on golf, boating, and enjoying a peaceful, high-end lifestyle. The area is perfect for affluent families and retirees seeking luxury and privacy.



POPULATION

4,000



MEDIAN HOME
PRICE

\$600,000



SCHOOL
DISTRICT

New Hanover
County Schools



PUBLIC TRANSIT

Wave Transit
buses

Rocky Point

Rural Waterfront Living



Amenities

Rocky Point offers a rural lifestyle with access to large properties, parks, and local shops. It's known for its peaceful surroundings, providing more space than many Wilmington areas, with access to outdoor activities like fishing and hiking.

Why Residents Love it

Rocky Point is loved for its affordable, spacious properties and country lifestyle. It's ideal for those seeking privacy and a slower pace of life, while still being within a short distance of Wilmington's urban amenities.

Notable Attractions

Rocky Point's main draw is its rural charm and proximity to both Wilmington and the coast. It provides easy access to nearby beaches, while also offering scenic views of farmland and nature reserves.

Community Vibe

The community is laid-back and family-oriented, with a strong focus on rural living. It's a peaceful area, attracting those who value space, privacy, and a slower, more relaxed lifestyle.



POPULATION

4,500



MEDIAN HOME
PRICE

\$295,000



SCHOOL
DISTRICT

New Hanover
County Schools



PUBLIC TRANSIT

Limited public
transport

Southport

Historic Coastal Town



Amenities

Southport offers a small-town atmosphere with local shops, waterfront dining, and historic landmarks. The area is known for its historic homes, antique shops, and small-town charm, along with parks, public beaches, and local galleries.

Notable Attractions

Southport's historic district is a major draw, featuring charming streets lined with 19th-century buildings. The waterfront offers beautiful views of the Cape Fear River, while the North Carolina Maritime Museum highlights the area's seafaring history.

Why Residents Love it

Residents love Southport for its peaceful, scenic beauty and small-town charm. The close-knit community, coupled with the town's rich history and vibrant arts scene, make it an attractive destination for retirees and those seeking a slower-paced lifestyle near the coast.

Community Vibe

The community in Southport is friendly and welcoming, with a focus on maintaining the town's historic charm. There is a strong emphasis on local events, art, and culture, and the town's coastal location fosters a relaxed, laid-back atmosphere.



POPULATION

3,000



MEDIAN HOME
PRICE

\$499,000



SCHOOL
DISTRICT

Brunswick
County Schools



PUBLIC TRANSIT

Limited public
transport

Topsail Island

Scenic Coastal Island



Amenities

Topsail Island offers a quiet, coastal lifestyle with access to pristine beaches, local shops, and casual dining. The island has small businesses, seafood markets, and seasonal events, providing residents with a charming beach-town atmosphere.

Notable Attractions

Topsail Beach is the main attraction, offering uncrowded beaches and excellent opportunities for fishing and water activities. The Karen Beasley Sea Turtle Rescue and Rehabilitation Center is another key spot for wildlife enthusiasts.

Why Residents Love it

Topsail Island is cherished for its natural beauty and peaceful lifestyle. The community is small and quiet, making it perfect for those looking to escape the hustle and bustle. Residents appreciate the tight-knit feel and the slower pace of life offered by this scenic island.

Community Vibe

The community vibe on Topsail Island is calm and close-knit, with a focus on nature and outdoor living. The island is popular among families, retirees, and seasonal residents who value privacy, outdoor recreation, and coastal living.



POPULATION

5,000



MEDIAN HOME
PRICE

\$450,000



SCHOOL
DISTRICT

Pender County
Schools



PUBLIC TRANSIT

Wave Transit
buses

Wilmington

Vibrant Port City



Amenities

Wilmington offers a variety of amenities, including numerous parks, public beaches, and a vibrant downtown area with shops, restaurants, and cultural venues. The city is also home to schools, healthcare facilities, and conveniences like shopping centers and transportation.

Notable Attractions

The Wilmington Riverwalk, located along the Cape Fear River, offers beautiful views and access to shops, eateries, and historic sites. Other notable attractions include the USS North Carolina Battleship Memorial, Bellamy Mansion Museum, and annual events.

Why Residents Love it

Residents appreciate Wilmington for its mix of coastal charm and urban amenities. The city has a thriving arts scene, excellent dining options, and a wide range of outdoor activities, making it perfect for families, professionals, and retirees.

Community Vibe

The community in Wilmington is diverse and welcoming, with a mix of young professionals, families, and retirees. There's a strong sense of pride in the city's history, and people enjoy the balance of vibrant city life and coastal living.



POPULATION

125,000



MEDIAN HOME
PRICE

\$319,000



SCHOOL
DISTRICT

New Hanover
County Schools



PUBLIC TRANSIT

Wave Transit
buses

Wrightsville Beach

Charming Beach Town



Amenities

Wrightsville Beach is known for its luxury homes, beach access, and excellent amenities, including several high-end restaurants, surf shops, and parks. The town offers water activities, walking trails, and a marina, along with top-tier schools and healthcare services.

Notable Attractions

Wrightsville Beach is renowned for its crystal-clear waters and top-tier surfing. The Johnnie Mercer's Pier is a popular spot for fishing, and the Wrightsville Beach Museum of History offers insight into the area's past.

Why Residents Love it

Residents love Wrightsville Beach for its stunning coastal beauty, outdoor lifestyle, and active community. The area has a strong focus on water sports, including surfing and paddleboarding, making it ideal for those who enjoy an active, beach-centric lifestyle.

Community Vibe

The community is active and outdoorsy, with a strong emphasis on maintaining an eco-friendly, beach-focused lifestyle. Wrightsville Beach attracts people who value the coastal lifestyle, with a tight-knit, social community and plenty of opportunities for outdoor activities.



POPULATION

3,000



MEDIAN HOME PRICE

\$950,000



SCHOOL DISTRICT

New Hanover County Schools



PUBLIC TRANSIT

Wave Transit buses

Boiling Spring Lakes

*Peaceful, Natural,
Suburban*



Amenities

Boiling Spring Lakes is a tranquil, nature-filled community offering residents access to several freshwater lakes, parks, and outdoor spaces. The area provides a quiet, suburban atmosphere with a mix of residential homes and large properties.

Notable Attractions

The Boiling Spring Lakes themselves are a key attraction, known for their picturesque beauty and opportunities for boating, fishing, and birdwatching. The nearby Spring Lakes Park offers a beautiful, serene location for walking, picnics, and nature exploration.

Why Residents Love it

Residents of Boiling Spring Lakes appreciate the peaceful, nature-filled environment combined with an affordable cost of living. The proximity to both the city of Wilmington and the nearby beaches provides a great balance of suburban living and coastal recreation.

Community Vibe

The community vibe in Boiling Spring Lakes is quiet, relaxed, and family-oriented. It's a place where neighbors know each other, and the natural surroundings foster a strong connection to the outdoors.



POPULATION

~2,000



MEDIAN HOME
PRICE

~\$250,000



SCHOOL
DISTRICT

Brunswick
County Schools



PUBLIC TRANSIT

Limited public
transport (car-
dependent)

St. James

*Golf, Coastal,
Leisure*



Amenities

St. James is a master-planned coastal community offering a mix of single-family homes, townhomes, and vacation properties. Residents enjoy top-notch golf courses, fitness centers, walking trails, and community pools.

Notable Attractions

St. James Golf Club is a centerpiece for golf enthusiasts, offering championship courses and social events. The nearby Intracoastal Waterway provides boating and fishing opportunities for all skill levels.

Why Residents Love it

Residents love St. James for its resort-style living, scenic coastal views, and strong community amenities. The area is safe, welcoming, and ideal for retirees, families, and second-home owners.

Community Vibe

St. James has a relaxed, upscale, and welcoming atmosphere. Neighbors enjoy a sense of community while maintaining privacy and leisure-focused lifestyles. The social hubs, golf clubs, and waterfront activities create a resort-like environment year-round.



POPULATION

6,500



MEDIAN HOME
PRICE

\$475,000



SCHOOL
DISTRICT

Brunswick
County Schools



PUBLIC TRANSIT

Limited local bus
service; mostly car-
dependent



Explore Wilmington's Vibrant Communities

Wilmington and its surrounding areas are home to diverse communities, each offering unique features, amenities, and lifestyles. Whether you're drawn to the vibrant urban life, the tranquility of a beach town, or the luxury of a gated community, Wilmington has something for everyone. Explore the communities that make this region so special and find the perfect place to call home.



Landfall

*Exclusive, Gated,
Luxury*

Amenities

Luxury homes, exclusive golf courses, private nature trails, pools, fitness centers, local shopping.

Notable Attractions

Landfall Golf Courses,
Wrightsville Beach, Private
Nature Trails

Why Residents Love it

Residents love the exclusivity, tranquility, and high-end amenities. It's perfect for those seeking privacy and luxury.

Community Vibe

Private, upscale, with frequent social events.



POPULATION

5,000



MEDIAN HOME
PRICE

\$1.2
million



SCHOOL
DISTRICT

New Hanover
County Schools



PUBLIC TRANSIT

Wave Transit
buses



Riverlights

*Modern, Waterfront,
Community*



Amenities

Waterfront homes, marina, walking trails, parks, town center with shops and dining.

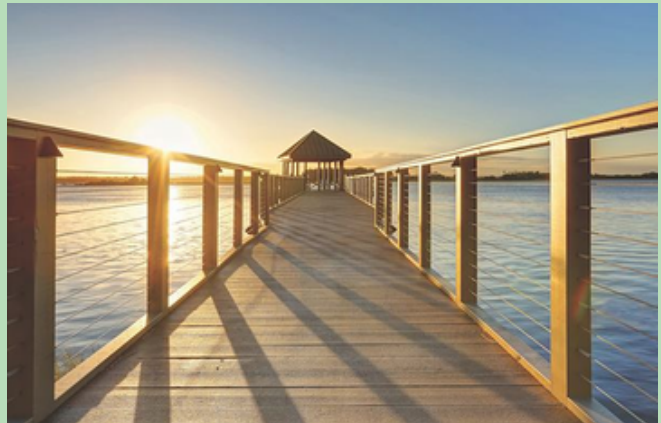
Notable Attractions

Lakefront Park, Marina, Town Center



Why Residents Love it

Residents love the scenic views, modern homes, and mix of nature and urban amenities.



Community Vibe

Social, family-friendly, modern.



POPULATION

2,500



MEDIAN HOME
PRICE

\$350,000



SCHOOL
DISTRICT

New Hanover
County Schools



PUBLIC TRANSIT

Wave Transit
buses

Brunswick Forest

*Spacious, Active,
Green*

Amenities

Golf courses, parks, fitness center, walking trails, town center with shops and dining.

Notable Attractions

Fitness and Wellness Center, Town Center, Brunswick Nature Park

Why Residents Love it

Residents love the active lifestyle, ample green space, and vibrant community. It's perfect for those who enjoy an outdoor lifestyle.

Community Vibe

Active, social, welcoming.



POPULATION

8,000



MEDIAN HOME
PRICE

\$380,000



SCHOOL
DISTRICT

Brunswick
County Schools



PUBLIC TRANSIT

Limited public
transport



Compass Pointe

Private, Golf, Resort

Amenities

Multiple golf courses, clubhouse, spa, fitness center, walking trails.

Notable Attractions

Golf Courses, Resort-style Spa, Town Center

Why Residents Love it

Residents love the luxury, wellness focus, and resort-style living with a strong sense of community.

Community Vibe

Exclusive, resort-like, serene.



POPULATION

3,500



MEDIAN HOME
PRICE

\$700,000



SCHOOL
DISTRICT

New Hanover
County Schools



PUBLIC TRANSIT

Wave Transit
buses

River Bluffs

*Peaceful, Nature,
Waterway*

Amenities

Cape Fear River access, nature trails, parks, clubhouse, fitness center.

Notable Attractions

Cape Fear River, River Bluffs Park, Clubhouse

Why Residents Love it

Residents love the scenic beauty, outdoor activities, and strong community spirit. It's a peaceful, nature-focused area.

Community Vibe

Peaceful, nature-focused, community-oriented.



POPULATION

1,000



MEDIAN HOME
PRICE

\$450,000



SCHOOL
DISTRICT

Pender County
Schools



PUBLIC TRANSIT

Limited public
transport

Salters Haven

*Luxury, Waterfront,
Leisure*

Amenities

Marina, coastal walking trails,
clubhouse, fitness center,
swimming pool.

Notable Attractions

Marina, Haven Park, Nature Trails

Why Residents Love it

Residents love the waterfront
living, privacy, and leisure-
focused lifestyle.

Community Vibe

Exclusive, coastal, leisure-
focused.



POPULATION

3,500



MEDIAN HOME
PRICE

\$700,000



SCHOOL
DISTRICT

Brunswick
County Schools



PUBLIC TRANSIT

Wave Transit
buses

The Bluffs on Cape Fear

*Exclusive, Scenic,
Coastal*

Amenities

River views, nature trails, parks, clubhouse for social events.

Notable Attractions

Cape Fear River, Bluff Trail, Boat Docks

Why Residents Love it

Residents love the tranquility, riverfront views, and upscale living. It's ideal for those seeking a private, serene lifestyle.

Community Vibe

Serene, exclusive, nature-oriented.



POPULATION

2,000



MEDIAN HOME
PRICE

\$700,000



SCHOOL
DISTRICT

New Hanover
County Schools



PUBLIC TRANSIT

Wave Transit
buses

Magnolia Greens

Golf, Resort, Relaxed

Amenities

27-hole golf course, clubhouse, walking trails, fitness center.

Notable Attractions

27-hole Golf Course, Magnolia Greens Clubhouse, Nature Preserves

Why Residents Love it

Residents love the relaxed atmosphere, great golfing, and strong community connections.

Community Vibe

Relaxed, social, community-oriented.



POPULATION

6,000



MEDIAN HOME
PRICE

\$450,000



SCHOOL
DISTRICT

New Hanover
County Schools



PUBLIC TRANSIT

Wave Transit
buses

River Landing

*Private, Upscale,
Leisurely*

Amenities

Golf courses, marina access,
clubhouse, fitness center,
walking trails.

Notable Attractions

Northeast Cape Fear River, River
Landing Clubhouse, River
Preserve Park

Why Residents Love it

Residents love the privacy,
upscale living, and access to golf
and nature. It's ideal for those
seeking luxury and relaxation.

Community Vibe

Upscale, peaceful, social.



POPULATION

6,000



MEDIAN HOME
PRICE

\$500,000



SCHOOL
DISTRICT

Brunswick
County Schools



PUBLIC TRANSIT

Wave Transit
buses

Wrightsboro

*Rural, Quiet,
Accessible*

Amenities

Wrightsboro offers a mix of rural charm and suburban conveniences.

Notable Attractions

Wrightsboro Historic District is a key attraction, with several sites that showcase the area's history.

Why Residents Love it

It provides a peaceful living environment while being just a short drive from the city.

Community Vibe

The area is a quiet retreat, offering space and privacy, while maintaining access to essential amenities.



POPULATION

3,000



MEDIAN HOME
PRICE

\$300,000



SCHOOL
DISTRICT

New Hanover
County Schools



PUBLIC TRANSIT

Limited public
transport

Murrayville

*Suburban, Growing,
Access*

Amenities

Murrayville is a growing suburban community with easy access to Wilmington.

Notable Attractions

Murrayville Community Park offers walking trails, sports fields, and playgrounds.

Why Residents Love it

It's perfect for families and professionals looking for a more affordable place to live.

Community Vibe

It has a welcoming, suburban feel that's attractive to families and professionals.



POPULATION

6,000



MEDIAN HOME
PRICE

\$330,000



SCHOOL
DISTRICT

New Hanover
County Schools



PUBLIC TRANSIT

Wave Transit
buses

Ogden

*Quiet, Suburban,
Convenient*

Amenities

Ogden is a quiet, suburban community with a mix of residential properties and commercial areas.

Notable Attractions

Ogden Park offers walking trails, picnic areas, and sports fields.

Why Residents Love it

Residents love Ogden for its peaceful suburban atmosphere, proximity to Wilmington, and family-friendly environment.

Community Vibe

The area has a mix of families and retirees, with plenty of green space and parks for outdoor activities.



POPULATION

8,500



MEDIAN HOME
PRICE

\$350,000



SCHOOL
DISTRICT

New Hanover
County Schools



PUBLIC TRANSIT

Wave Transit
buses

Start Your New Chapter in Wilmington – Contact Us Today!

LIVINGINWILMINGTONNC.COM

Let's start your journey today! Whether you're looking to buy or rent, we can help you find the home of your dreams. Reach out to us for more information, to schedule a consultation, or to get personalized advice about relocating to Wilmington!



Email: hello@livingilm.com

Phone: (910) 399-2929



Living in Wilmington

LIVINGINWILMINGTONNC.COM