

Now Selling

Vineyard

E S T A T E S

At Dinuba, CA

A new gated community is located in the fast-growing part of Northwest Dinuba with a breathtaking view of the Sierra Nevada mountains, and an easy driving distance to the Sequoia and King Canyon National Parks. This new community offers both single and second story homes with different floor plans ranging from 1,300 to 1,855 square feet and three elevation plan options. The Vineyard Estates has a Home Owner Association, to ensure the community stays well-maintained and protected so families can enjoy their homes. The community is located within the boundaries of the reputable Dinuba High School, making it a perfect location for families with school-aged children. These homes are located minutes from Ridge Creek Golf Club, shopping areas, and a variety of dining experiences.

Built By

(We reserve the right to change the following: Plans, Specifications, features, square footages, prices, options, colors and availability without prior notice. All drawings and renderings are for reference only and do not reflect the actual finished product.)



CSLB #1043600

SAPPHIRE



1300 sq.ft. - 3 bedroom / 2 bathroom

A

B

C



Single Story Floor Plan

MUSCAT



1620 sq.ft. - 3 bedroom / 2.5 bathroom + Den / 4th bedroom

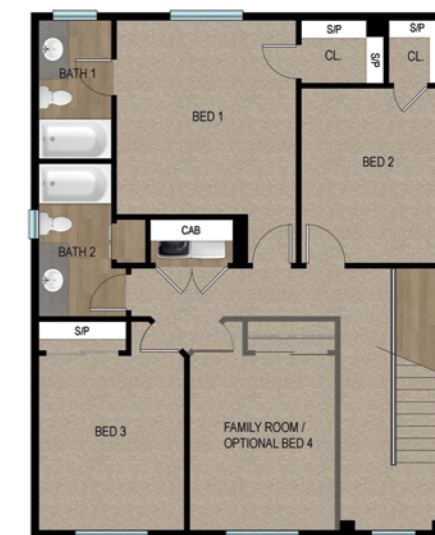
A

B

C



1st Story Floor Plan



2nd Story Floor Plan



A



1st Story Floor Plan



B



C



2nd Story Floor Plan



A



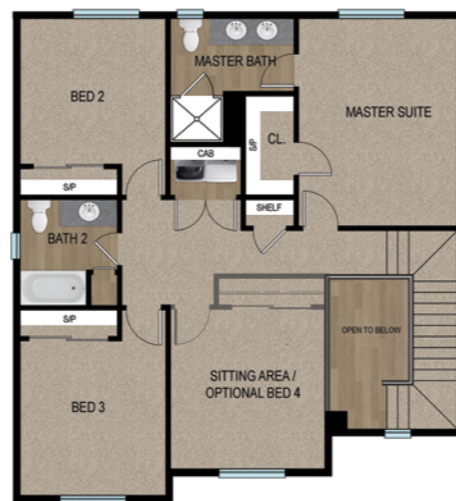
1st Story Floor Plan



B



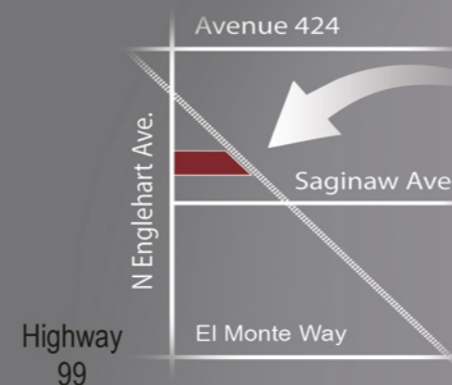
C



2nd Story Floor Plan



Reedley



Visalia



GOLD STANDARD MORTGAGE
www.goldstandardmortgage.com

APPLY HERE



Constance Griggs-Lazzeroni
NMLS # 847445
NMLS # 1779283

559-347-8000

constance@goldstandardmortgage.com



www.DinubaEstates.com



RE/MAX GOLD

Veronica Torres Luna
Realtor BRE # 02020505
Remax Gold DRE # 01215931

559-305-1083

vetorresluna@gmail.com

Greg Maroot
Realtor DRE # 01102553

559-994-0254

gmaroot@comcast.net