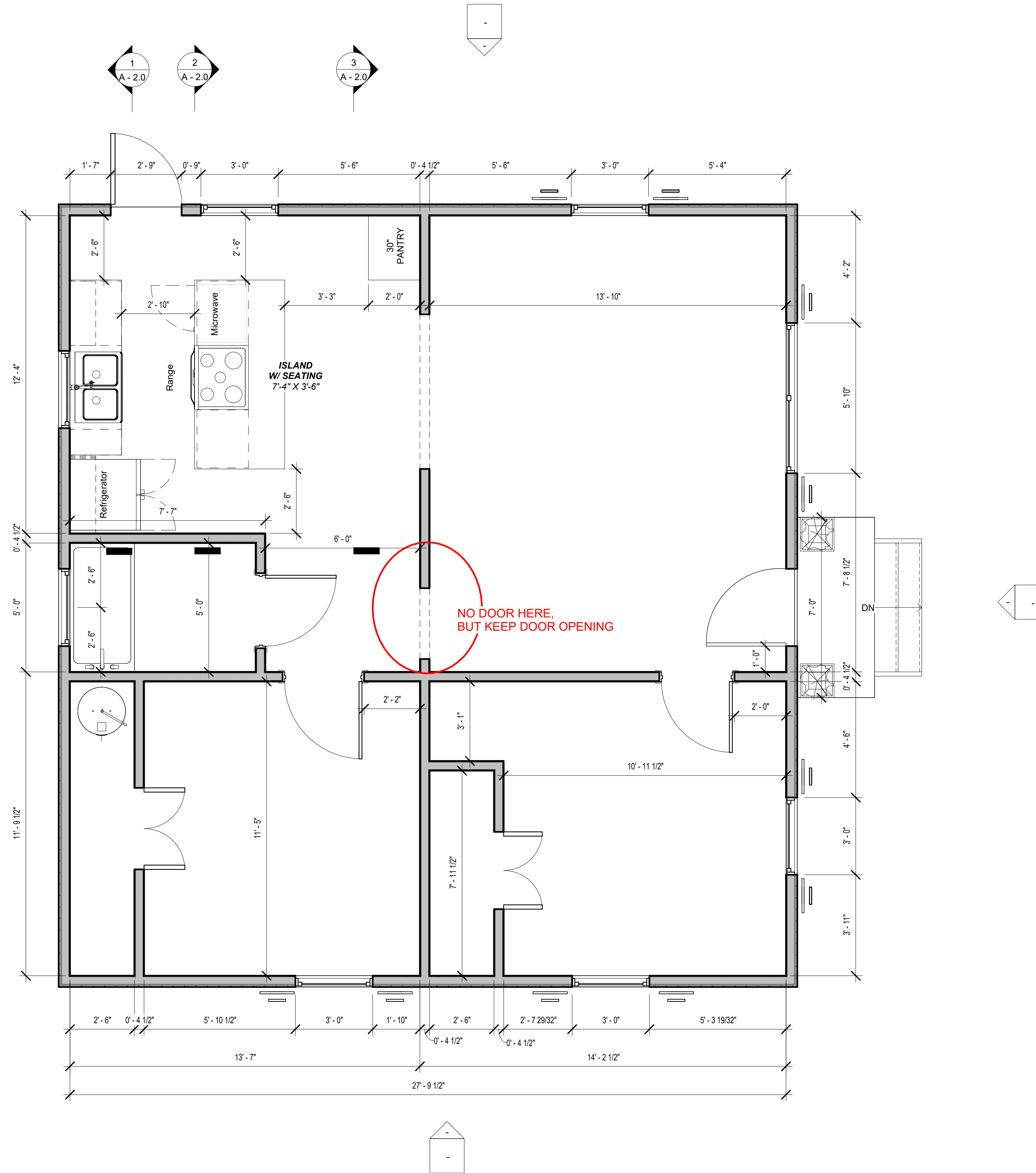
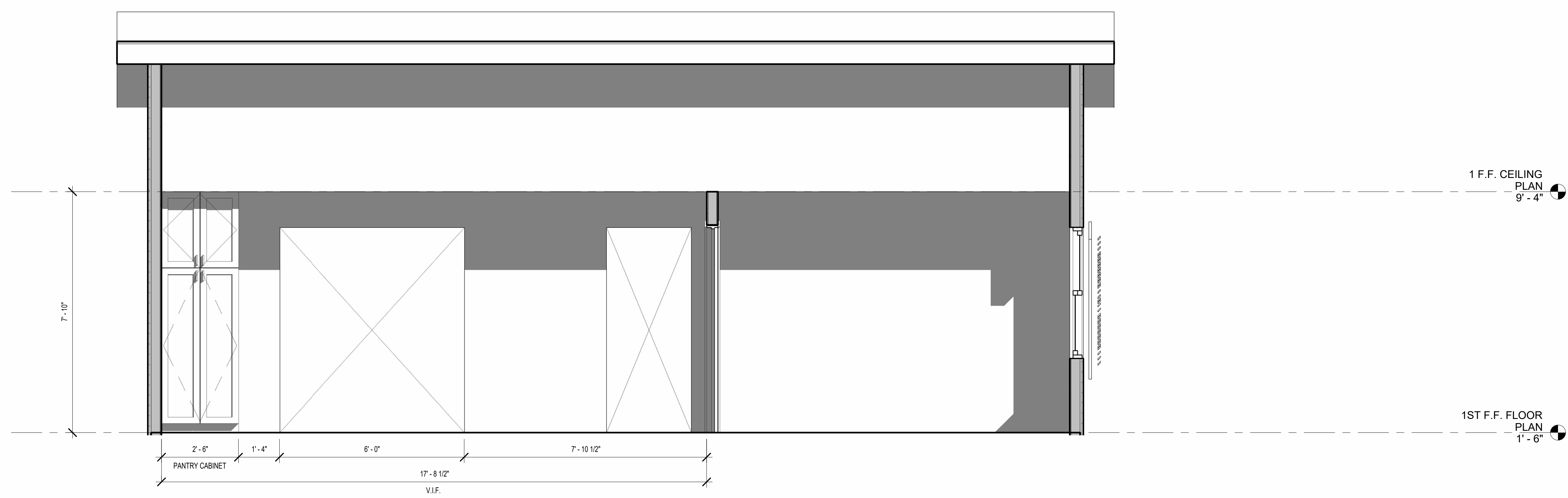


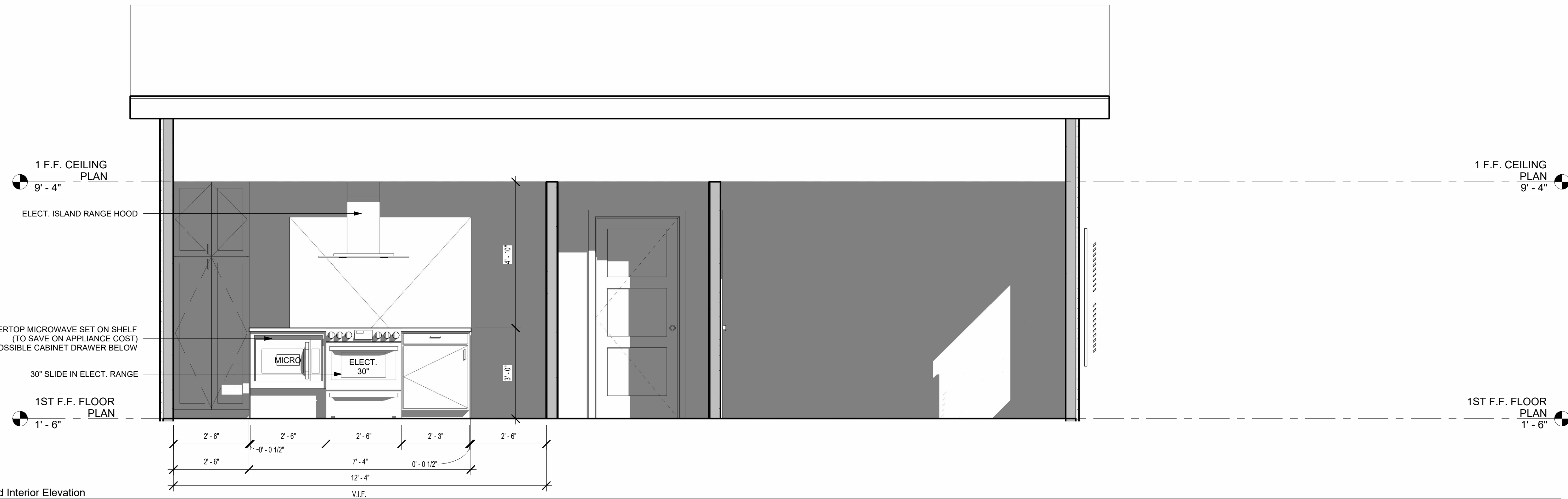
CHANGES PROPOSED
• MAKE BOTH BEDROOM CLOSET DOORS DOUBLE DOORS INSTEAD OF SINGLE.



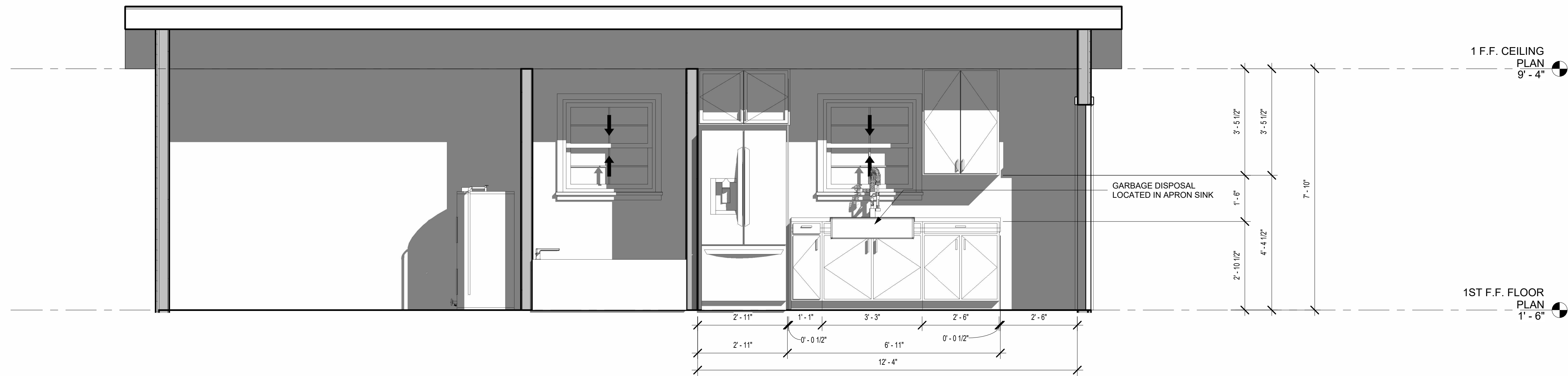
1 1ST F.F. FLOOR PLAN
3/8" = 1'-0"



3 Kitchen Interior Elevation #2 @ Pantry
1/2" = 1'-0"



2 Kitchen Island Interior Elevation
1/2" = 1'-0"



1 Kitchen Interior Elevation #1
1/2" = 1'-0"