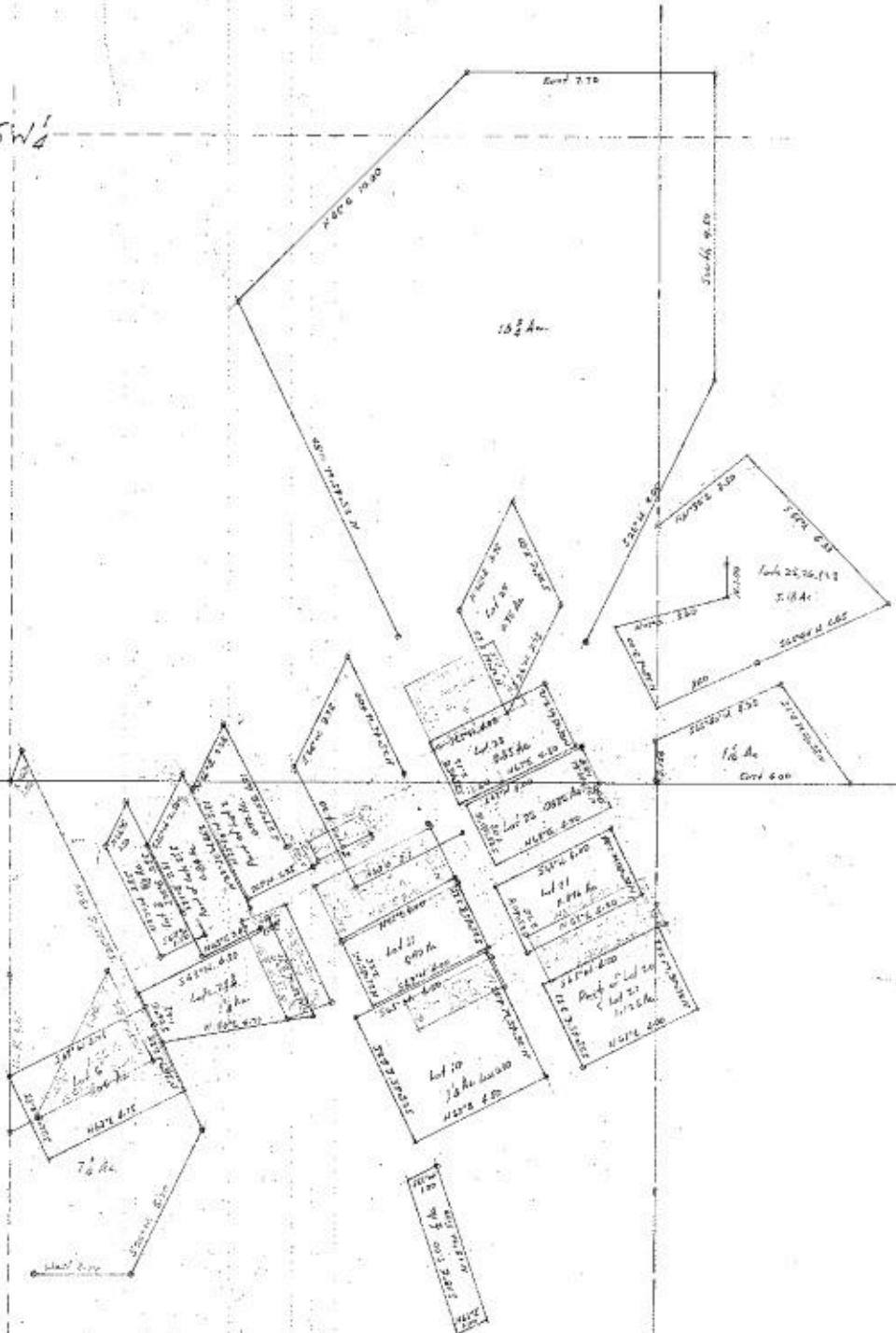


SW 1/4

Sec 20 Sec 21
Sec 29 Sec 30



CALDWELL, RICHARDS & SORENSEN
 ENGINEERS
 410 Townsend Bldg
 SALT LAKE CITY 2, UTAH

MILTON TOWNSITE
 T4N R2E

NW 1/4

Descriptions obtained from
 old plot book used prior
 to 1929