

December 2025 | Edition 224

---

# NPAG News

---

## Inside this edition

- News in brief
- The 2025 Budget and the NHS
- AI screening innovation
- NHS Digital Switchover Planning Webinar
- 2025 successes and reflection
- A look at what's in store for the NHS in 2026
- Best Value Groups and training workshops
- NPAG Network

*and much more...*

[npag.org.uk](https://npag.org.uk)

# Welcome to NPAG News for December

**W**elcome to the December edition of NPAG News.

December marks the end of the calendar year, making it a time for reflection. It is also a time for holiday celebrations, cosy winter evenings and a look ahead to the coming year.

Reflecting on NPAG’s year, it has been another successful one, during which we have continued to run and attract new Members to our twenty or so national Best Value Groups (BVGs). We have also delivered two successful major Conferences, along with new training workshops.

In the summer we undertook a survey of our BVG membership and were delighted with the results, which confirmed that our groups continue to help all of you in making a difference. Turn to pages 9 and 10 for a more in-depth reflection and celebration of the last twelve months.

It has been a challenging year too though for many of us, with Trusts merging, financial restraint hitting ever harder and travel restrictions continuing for many. Because we at NPAG are ourselves part of an NHS Trust, we share and understand the challenges you are facing and, looking ahead to 2026, we will continue to consult with you all on how best we can support you in the year ahead.

Towards the end of November we finally heard the Chancellor deliver her much-anticipated 2025 Budget Statement. Read our brief Budget review on page 4.

So, the festive season is almost upon us, and we hope that you will find time to celebrate and to spend precious time with your families and loved ones.

We wish you all a peaceful time and a happy and prosperous New Year.

## Inside This Edition

News in Brief	3
The 2025 Budget Statement	4
PSTN Webinar	5-6
Driving forward Sustainability	7
A Sustainable Christmas	8
NPAG’s Journey Through 2025	9
2025 Highlights & Successes	10
A Look Ahead to 2026	11
AI Screen Innovation	12
Best Value Groups	14
NPAG training workshops	15
NPAGNetwork – Supporting our members	16
What’s hot for the coming months	17

“As a result of initiatives obtained through NPAG, we have implemented solutions that have made significant improvements in efficiency of working and also made significant cost savings for the Trust.

Telecoms BVG member 2025-26

# News in Brief

## NHS Trust Mergers: Navigating Change with NPAG

NHS Trust mergers are transforming the healthcare landscape, creating larger, integrated organisations designed to deliver smarter, more efficient care. The goal of better outcomes and streamlined services is clear, but the journey is complex. Aligning policies, harmonising standards, and maintaining patient focus during change can be challenging.

That's where NPAG steps in. Our national benchmarking groups and workshops provide a trusted platform for merged Trusts to share best practice and co-develop solutions.

Best Value Groups help harmonise standards and drive efficiency across multiple sites, while benchmarking tools support policy alignment and consistent service quality. Workshops such as Putting the Patient First equip staff with the skills and confidence to deliver compassionate care during organisational transition.

NPAG also offers a neutral space for cross-site dialogue, enabling collaboration and innovation. With new procurement and governance models emerging, our flexible, scalable services are tailored to meet the needs of larger, more complex Trusts. In a time of significant change, NPAG can help Trusts ensure they don't just adapt but thrive.

## Networking and Peer Support Rated Most Valuable

Results from our 2025 NPAG Member Survey highlight that networking and peer support remain the top reasons members value their NPAG membership.

Respondents consistently praised the opportunity to connect with colleagues facing similar challenges, share best practice, and access a community, both during meetings and through inter-meeting discussions.

Many members reported that ideas and solutions gained from NPAG have been directly applied in their day-to-day work, helping to drive improvements and innovation across their Trusts.

If you're not a member but want to share your experiences and connect with peers by attending upcoming BVG meetings or exploring additional groups, now is the perfect time to get involved. Visit our [website](#) or [contact us](#) to find out more.

## NPAG Christmas Opening

Over the festive period, the NPAG office will be operating with reduced staffing. Please note the following closures:

- 25th & 26th December
- 1st January

If you need to contact the Team during this time, please email a member of the team via [info@npag.eastamb.nhs.uk](mailto:info@npag.eastamb.nhs.uk) and we'll respond as soon as possible. We'd like to take this opportunity to wish all our members, associates, and colleagues a very Merry Christmas and every success in 2026!



## New Year Offer for NPAG Members

We're delighted to announce that in January we'll be launching a special promotion for our members. As part of this New Year gift, you'll have the opportunity to add additional colleagues from your Trust to your Benchmarking and Best Value Groups (BVGs) at a reduced fee. This is a great chance to expand your team's involvement and maximise the benefits of NPAG membership.

Look out for full details in January – don't miss out!

# The 2025 Budget and the NHS

**On 26 November the Government announced:**



Rachel Reeves sets out a Budget that delivers on the change promised by the government to cut NHS waiting lists...The

Chancellor unveiled a Budget that takes the fair choices to deliver on the country's priorities of cutting the cost of living, reducing NHS waiting lists and driving down our borrowing and debt.

At the Autumn Budget the Chancellor announced measures to cut NHS waiting times – continuing record investment into the NHS.

- £300 million of funding made available for NHS technology to support work of staff and boost their productivity – allowing nurses and doctors to focus on caring for patients and speeding up how quickly patients are treated.
- The NHS prescription cost in England will remain at £9.90.
- The Chancellor will double down on the government's commitment of continuing to slash NHS waiting times, confirming the investment for hundreds of new Neighbourhood Health Centres that will deliver healthcare direct to people's doorsteps across the country.
- These 250 new health 'one-stop shops' will bring the 'right local combination' from GPs, nurses, dentists and pharmacists together under one roof to best meet the needs of the community, starting in the most deprived areas.

- The centres will be part of a new Neighbourhood Health Service that will provide end-to-end care and tailored support - improving access to GPs, helping to prevent complications and avoid the frustration of being passed around the system.
- As the Neighbourhood Health Service moves more outpatient care out of hospitals, these centres will provide space for clinics in communities across the country – bringing an end to the postcode lottery of access to healthcare.
- Patients will get treatment minutes from home instead of travelling miles to often hard to reach hospitals, so the NHS is organised around patients' needs - rather than patients organising their lives around the NHS.
- With construction delivered by a dynamic new approach between the public and private sector, involving both repurposing current estate and new buildings, Neighbourhood Health Centres are a key part of the government's plan to build an NHS fit for the future, one that fits around people's lives and is an integral part of their community.

## What Will NPAG Be Doing?

NPAG will be monitoring the implementation of these and other measures. We will be talking to our members and clients to understand the impact of Government interventions on the ground and to identify any unintended consequences of Government action.

As always, we will be here to support you through these major developments. If you are not currently a member of one of our national Best Value Groups then why not join one of our meetings as a try-before-you-buy guest?

[Contact us](#) for more information on how to join.

# Countdown to 2027: NHS Digital Switchover Planning Webinar



National Performance  
Advisory Group

Early 2026 | MS Teams

Join our essential webinar for NHS professionals impacted by the PSTN switchover.



Early Spring 2026



Online event via MS Teams



Free for delegates to attend

The Public Switched Telephone Network (PSTN) is being retired in early 2027. This change will affect critical NHS systems - from health monitors and cardiac arrest phones to emergency response lines and telecare services. More than a system upgrade, the switchover represents a challenge to patient safety and operational resilience.

If your organisation hasn't started planning, now is the time. Join us to understand the risks, explore solutions and hear from experts who are shaping the future of NHS connectivity.

## Who Should Attend?

- IT and Connectivity
- Telecoms
- Medical Devices and Clinical Engineering
- EPRR
- Estates
- Facilities
- Social Care
- Community Nursing

**This webinar is a key opportunity for Trusts to get ahead of the curve and ensure a smooth, safe switchover.**

## What You Will Gain

- Clarity on the impact to NHS services and what needs urgent attention
- Practical strategies for managing risk and ensuring resilience
- Insights from NHS England on national guidance and compliance
- Real-world case studies from NHS Trusts already preparing for the switch
- Direct input from leading service providers

## What to Expect

- Insightful presentations from leading telecom and connectivity specialists
- Real-world experiences shared by NHS organisations navigating the transition
- Updates on national policy and risk management from NHS England
- Strategic perspectives from the Department for Science, Innovation & Technology

## Sponsorship

Sponsorship opportunities are available. See over-page for details.



The PSTN switchover isn't just a technical upgrade - it affects patient safety, emergency response, and clinical continuity. Every NHS organisation must act now.

NHS England guidance

**Don't wait until it's too late. Secure your place today!**

Contact us at: [info@npag.eastamb.nhs.uk](mailto:info@npag.eastamb.nhs.uk) to reserve your free delegate place.



# Countdown to 2027: NHS Digital Switchover Planning Webinar



National Performance  
Advisory Group

## Sponsorship Packages

Early 2026 | MS Teams

Sponsorship packages are now open!

### **HEADLINE** Package £2000 plus VAT. Limited availability.

#### Package to include: -

- 1 x 30-minute educational presentation on the conference agenda, plus participation in an interactive panel session with audience Q&A—an excellent opportunity to showcase your thought leadership.
- Acknowledgement as a Headline Sponsor during the opening and closing sessions.
- Company logo will be prominently displayed on all delegate materials, including the event program and digital agenda, highlighting your status as a Headline Sponsor
- Company logo included on NPAG website in run up to conference.
- Social media exposure in the lead up to the event and after to reinforce your brand visibility after the conference.
- Digital hand-outs to be placed on NPAG website and emailed to delegates.
- 1 x half page advertisement within NPAG News, giving your brand national exposure to healthcare decision-makers
- Conference delegate passes.

### **GOLD** Package £1000 plus VAT.

#### Limited availability.

#### Package to include:

- Prominent editorial feature in NPAG News, offering a platform to share insights and strengthen your brand presence within the NHS community.
- Company logo included within conference marketing material.
- Company logo included on NPAG website in run up to conference.
- Social media exposure.
- Handouts to be placed on NPAG website
- 1 x half page advertisement in NPAG News, giving your brand national exposure to healthcare decision-makers
- 4 x conference delegate passes.

### **SUPPORTER** Package £500 plus VAT.

#### Package to include:

- Company logo included within conference marketing material.
- Company logo included on NPAG website in run up to conference.
- Social media exposure.
- Digital handouts to be placed on NPAG website.
- 1 x 1/3 page advertisement in NPAG News, ensuring your brand reaches a national audience of healthcare decision-makers
- 2 x conference delegate passes.

## Interested?

Contact NPAG for further information or a sponsorship agreement form:

[info@npag.eastamb.nhs.uk](mailto:info@npag.eastamb.nhs.uk)

\*Terms and conditions apply.

# Driving Sustainability Forward

The momentum behind sustainable healthcare continues to grow and NPAG's host Trust, the East of England Ambulance Service NHS Trust (EEAST), is proud to be one of many leading the charge.

Since 2019/2020, the NHS has reduced its carbon footprint by 14%, putting us firmly on track to meet our 2032 and 2040 reduction targets. This milestone reflects the collective efforts of Trusts nationwide and underscores the importance of continued action.

Read below how EEAST is making a difference.

**Green Plan Addendum:** EEAST's Green Plan Addendum is now complete and was approved by the board last month. This strategic document outlines the Trust's next steps in sustainability and aligns with national goals for greener healthcare.

**Tree Planting Leadership:** During the 2024/25 tree planting season, EEAST planted 425 trees, which is the highest number among UK ambulance services. This year, the tree planting season is underway (with planning still ongoing) and the aim is to plant at least 500 trees, generously provided by NHS Forest.

**October is Unblocktober!:** Unblocktober is a UK-wide campaign tackling drain and sewer misuse. Since its launch in 2019, it has grown into a powerful movement to protect our waterways and environment. Only flush the three P's - pee, poo, and paper - to keep systems clean and sustainable. Although this campaign takes place in October, its message is relevant all year round.

**EV Charger Rollout:** Electrical contractors are installing 7.4kw and 22kw AC electric vehicle chargers across the Trust. Phase one includes 49 chargers across 20 sites, supporting our transition to low-emission transport.

**Solar Power:** EEAST is proud to be among the first five NHS sites to install solar panels, thanks to a £100 million investment from Great British Energy and the government. These installations will reduce energy bills and deliver better value for taxpayers. By the end of the FY, EEAST will have added additional panels and battery storage at multiple sites across the Trust.

**Energy Audits in Action:** EEAST will continue to complete energy audits across our sites, with 54 audits completed so far this financial year. These assessments support the strategic goal of reducing energy consumption by at least 5%.

## Connect with NPAG's Best Value Groups for Sustainability & Innovation

To help NHS Trusts drive forward sustainability and operational excellence, NPAG invites you to engage with our BVG to tackle sustainability issues and initiatives head-on:

**Energy Network:** Launching in January 2026, this group focuses on energy efficiency, carbon reduction, and renewable energy strategies within healthcare estates.

**NHS Car Parking & Sustainable Travel Network:** With a new round in January 2026, this network supports Trusts in developing greener travel policies, improving parking management, and reducing transport-related emissions.

**NHS Sustainability Network:** A dynamic hub for sharing innovations, best practices, and strategic approaches to sustainability across NHS organisations.

**Waste Management BVG:** Starting this month, this group brings together NHS waste managers to explore circular economy practices, evaluate service providers, and develop cost-effective waste solutions.

See overpage for how you can do your bit for the planet this Christmas!

# Have a Sustainable Christmas!



Christmas is a time for celebration, but it also brings a significant environmental impact through waste, carbon emissions, and resource use. The good news? There are plenty of simple, fun ways to make your festive season more sustainable. Here are some top tips from our own EEAST Sustainability Team:

**Gift Giving:** Did you know that half of UK adults receive gifts they don't want at Christmas? Here are some ideas to make your gifting greener:

- Give experiences, not things – treat loved ones to a meal, concert, show, or trip for memories that last.
- Opt for gift vouchers – let recipients choose something they truly want.
- Donate on their behalf – sponsor an animal or contribute to a charity providing essentials for those in need.
- Shop second-hand – charity shops and platforms like Vinted or eBay offer great finds with less environmental impact.

**Wrapping Smarter:** The UK uses enough wrapping paper each year to circle the Earth nine times – much of it unrecyclable. Try these alternatives:

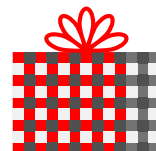
- Avoid glittery or foil-backed paper; choose recycled or recyclable options like brown paper.
- Swap plastic tape and ribbons for paper tape, fabric ties, or plant-based alternatives.
- Save old Christmas cards to reuse as gift tags next year.

**Tree & Decorations:** Every year, 7 million Christmas trees and 500 tonnes of lights are discarded. Here's how to decorate sustainably:

- Skip the tinsel – it's non-recyclable and harmful to pets and wildlife.
- Make your own decorations – use paper, old clothes, or recycled materials for a personal touch.
- Switch to LED lights – they use up to 90% less energy and last longer.
- Turn off lights overnight – save energy and money.
- Choose pre-loved or real trees - artificial trees need 10 years of use to offset their carbon footprint, while real trees can be replanted each year.

**Food Waste:** An estimated 42 million plates of food are thrown away during the festive season in the UK. Reduce waste by:

- Planning meals carefully – be realistic about what you'll need.
- Storing leftovers properly – use reusable containers instead of cling-film or foil; freeze extras or turn them into new dishes like curries, pies, or pasta bakes.
- Try meat-free options – reducing meat and dairy helps lower your carbon footprint.



Let's make this Christmas joyful and sustainable! Small changes can make a BIG difference for our planet.



# A Christmas Carol Reimagined:

## NPAG's Journey Through 2025

As the year draws to a close and festive lights begin to twinkle, we find ourselves reflecting on a transformative year, one that echoes the timeless journey of A Christmas Carol. Just as Ebenezer Scrooge was visited by the Ghosts of Christmas Past, Present, and Yet to Come, so too have we at NPAG been guided by reflection, action and vision.



### The Ghost of Christmas Present – A Year of Achievement

2025 has been a year of remarkable progress. Our Clinical Engineering Conference brought together leaders to explore cutting-edge technologies and service improvements. The Theatres & Decontamination Conference tackled sustainability and innovation, showcasing real-world success stories from our members.

We've expanded our reach, welcomed new organisations, and strengthened our role as a trusted partner in service improvement. Our monthly NPAG News kept members informed and inspired, while our "Try Before You Buy" initiative opened doors for new voices to join the conversation.

All of this was achieved while remaining true to our values and reinvesting profits into frontline services through our parent organisation, the East of England Ambulance Service NHS Trust.

### The Ghost of Christmas Yet to Come – A Future Reimagined

In A Christmas Carol, the future is uncertain, a warning and a promise. For the NHS, 2025 brought seismic change with the announcement that NHS England will be dissolved and brought under direct government control. This marks the end of an era and the start of a new chapter in healthcare governance.

While the implications are still unfolding, NPAG stands ready to support members through this transition. Our role to connect, inform, and empower is more vital than ever. As bureaucracy shifts and local leadership gains new tools, NPAG will ensure best practice continues to thrive.

### Looking Ahead

Like Scrooge's redemption, our story is one of hope. We've seen what collaboration can achieve, and we believe the future holds even greater promise. As we prepare for 2026, we invite you to join us in our groups, at our conferences, and in shaping the next chapter of public sector excellence.

Just like the spirit of Christmas brings people together, NPAG will continue to unite professionals across the NHS to share knowledge, spark innovation and deliver real improvements for patient care. In the year ahead, we'll build on the strong foundations of our past, introduce fresh initiatives, and create even more chances for members to collaborate and influence change. The future is bright and together we can make it a season of progress and success for all.

**Marie Cherry, Senior Business Manager, NPAG**

# Unwrapping 2025's Highlights!

Advent is upon us so, in true festive spirit, here are 24 sparkling achievements from NPAG in 2025, from magical conferences and merry best value groups to workshops that sleigh! Let's wrap up the year with cheer and celebration!

<b>1</b> Hosted the 16th annual Clinical Engineering Conference – bringing together leaders to share innovations in healthcare technology.	<b>2</b> Organised the Theatres & Decontamination Conference – focused on sustainability, circular economy, and surgical safety.	<b>3</b> Facilitated the National District Nurses Network – supporting national strategy development with NHS England and the Queen's Nursing Institute.	<b>4</b> Delivered multiple CPD-certified workshops – enhancing professional development across NHS roles. 
<b>5</b> Expanded face-to-face and virtual event formats – improving accessibility and reducing costs. 	<b>6</b> Led benchmarking exercises across our BVGs – helping departments monitor and improve performance.	<b>7</b> Enabled peer-to-peer learning and networking – through structured meetings and shared experiences. 	<b>8</b> Promoted innovation and cost-saving practices – via BVG presentations and member discussions.
<b>9</b> Encouraged “Try Before You Buy” attendance, making BVGs more accessible to new members. 	<b>10</b> Provided CPD certification for participation in NPAG meetings, events and workshops – supporting career progression and formal recognition.	<b>11</b> Hosted tailored workplace wellbeing workshops – focused on improving the mental health of healthcare professionals.	<b>12</b> Supported Occupational Health professionals with dedicated development groups – enhancing professional skills.
<b>13</b> Reinvested profits into frontline NHS services – supporting innovation and patient care within the East of England Ambulance Service NHS Trust. 	<b>14</b> Received fantastic testimonials from our members - sharing the value that NPAG groups, events and workshops add to their professional roles and organisations	<b>15</b> Championed sustainability in healthcare – through events and BVGs focused on energy, waste, and transport. 	<b>16</b> Promoted digital transformation in District Nursing – exploring the impact of tech on community care.
<b>17</b> Facilitated national strategy input via expert focus groups supporting NHS England and QICN.	<b>18</b> Supported 19 active BVGs, covering areas like Operating Theatres, Transport & Logistics, and Violence Reduction. 	<b>19</b> Strengthened partnerships with central bodies such as NHS England, NHS Employers, QNI and RCN – influencing national policy and practice.	<b>20</b> Managed the busy NPAGNetwork – unlocking shared knowledge across the NPAG community. 
<b>21</b> Run multiple workshops on ‘Putting the Patient First’ - applying best practice techniques to develop and support patient relationships and colleagues.	<b>22</b> Enabled flexible membership options – making participation more affordable and scalable. 	<b>23</b> Maintained this bi-monthly newsletter (NPAG News) – keeping members informed and engaged.	<b>24</b> Enhanced visibility of NHS innovations – through case studies, speaker sessions, and shared success stories. 

# NHS 2026: Major Changes Ahead

## What It Means for NPAG BVG Members

The NHS is entering a period of significant transformation. By 2026, structural reforms and strategic shifts will reshape how health services are delivered and managed. Here's what you need to know and how NPAG Best Value Groups (BVGs) can support you through these changes.

### Abolition of NHS England

The government has confirmed that NHS England will be fully absorbed into the Department of Health and Social Care by October 2026. This move aims to reduce bureaucracy, cut staffing by half (around 18,000 roles), and save approximately £500 million. Power will be devolved to local Integrated Care Systems (ICS) and Boards (ICBs), giving local leaders more autonomy.

### ICB Mergers and Boundary Changes

From April 2026, ICBs will undergo realignment to match local government boundaries, with some mergers expected. Running costs must be cut by 50%, and ICBs will shift toward strategic commissioning—focusing on population health, resource allocation, and long-term planning.

### NHS Focus for 2026/27

The NHS is prioritising:

- Hospital to community care, expanding out-of-hospital services.
- Reactive to preventive health – tackling illness before it escalates.
- Analogue to digital delivery – accelerating digital records, virtual wards, and telehealth.

Targets include reducing elective care waits (70% under 18 weeks) and improving A&E performance. Financial discipline remains key, with a 4% productivity gain expected.

### What This Means for NPAG BVG Members

- **Cost pressures:** All areas, from Estates to Operating Theatres, will face tighter budgets. BVGs provide benchmarking and best-practice sharing to help trusts meet efficiency targets.
- **Digital transformation:** With the PSTN switch-off and full digital telecom dependency by January 2027, NPAG Telecoms and EPRR groups are vital for planning and resilience. See pages 4 and 5 for more information about how NPAG is supporting NHS Professionals with the switchover.
- **Strategic support:** BVGs can help members understand new commissioning frameworks and adapt services accordingly.
- **Networking & peer learning:** As ICB boundaries shift, BVGs offer a safe space for discussion under Chatham House rules, ensuring members stay informed and connected.



### Summary

These changes present challenges but also opportunities for innovation and collaboration. NPAG BVGs will continue to provide practical support, benchmarking and networking to help members navigate this new landscape. Want to know how your BVG can help your organisation prepare? [Contact us](#) today.



# AI Screening Platform Set to Transform NHS Diagnostics

Millions of NHS patients could soon benefit from faster diagnoses and treatment as the health service embarks on a landmark trial of artificial intelligence (AI) in screening. The AIR-SP initiative represents one of the most ambitious digital health projects in NHS history.

Developed by NHS England and funded by the NIHR, AIR-SP introduces a secure, cloud-based platform designed to accelerate the evaluation and deployment of AI tools across NHS trusts. This unified system will allow clinicians to access cutting-edge AI technologies for analysing screening images and detecting abnormalities, including early signs of cancer.

## Why It Matters

Currently, 90% of AI NHS screening tools are stuck in pilot phases, largely due to fragmented IT infrastructure. Trusts must build bespoke systems and repeat validation processes. AIR-SP aims to solve this by hosting multiple AI tools in one secure environment, connected to all NHS trusts, cutting duplication, reducing costs and enabling simultaneous trials nationwide.

## Looking Ahead

There are significant challenges to address before widespread adoption occurs, particularly around data privacy, clinical accountability, transparency, bias, and regulatory compliance.

Once these hurdles are cleared however, health leaders believe this will be a pivotal moment for digital health, positioning the UK as a global frontrunner in AI-powered healthcare. Breast cancer screening trials will begin in 2027 but in time, the technology could extend to AI tools for detecting lung disease, liver cancer and a range of other conditions.

## What does this mean for NPAG Members?

What Does This Mean for NPAG Networks? This initiative will have a significant impact across NPAG member groups:

**IT & Connectivity Network:** The move to a secure NHS-wide cloud platform will require robust connectivity and cybersecurity measures. Members should consider how their Trusts will integrate with this new infrastructure.

**Clinical Engineering and IT & Medical Connectivity BVGs:** AI-driven screening tools will influence work flows and device interoperability. Teams will need to ensure compatibility and compliance with emerging standards.

**EPRR Network:** Faster diagnosis and treatment pathways could reshape emergency planning and resource allocation.

**Telecoms BVG:** The reliance on cloud-based systems highlights the importance of resilient digital networks and effective communication strategies.

## Share your thoughts

We invite members to share their own experiences and opinions on this innovation:

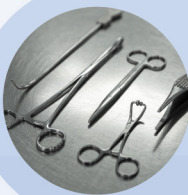
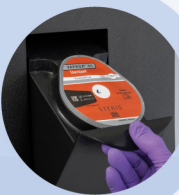
- How will AIR-SP affect your Trust's operations?
- What challenges do you foresee in implementing AI at scale?
- Are there opportunities for collaboration across NPAG networks?

Please email your insights to [info@npag.eastamb.nhs.uk](mailto:info@npag.eastamb.nhs.uk) or join the discussion in your next network meeting.

## WE HELP OUR CUSTOMERS CREATE A HEALTHIER AND SAFER WORLD



Procedural and CSSD  
Consumables and Capital  
Equipment



Surgical Instrument  
and Medical Device  
Sales and Repair

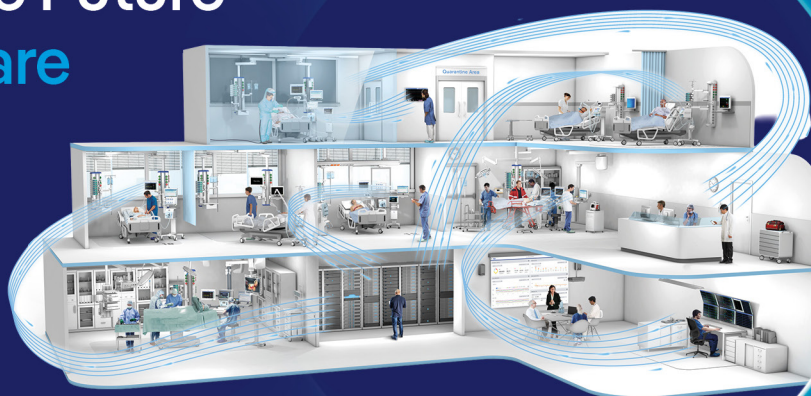


Decontamination  
and Sterilisation  
Services



Contact us today at [hellohealthcare@steris.com](mailto:hellohealthcare@steris.com)

## Discover the Future of **Acute Care**



**Dräger**

Technology for Life

[www.draeger.com](http://www.draeger.com)

## Theatres and Decontamination

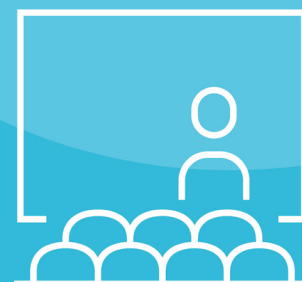


National Performance  
Advisory Group

# SAVE THE DATE

Tuesday 19th May 2026  
Stansted Radisson Blu

Email register your interest: [info@npag.eastamb.nhs.uk](mailto:info@npag.eastamb.nhs.uk)





# NPAG Best Value Groups

The following groups are renewing in the coming months:

## Waste Management - New round starting on 4th December 2025

NHS waste managers meet and share new ideas, evaluate tenders, discuss common problems, measure service providers performance, provide cost effective solutions, be creative and innovative in service design and network with others involved in the complex area of waste management. The group has developed a rich and multifarious membership and has developed their relationships with other national agencies including the Environment Agency, NHS Improvement, NHS England, CIWM and NHS Digital.

[Find  
out  
more](#)

## Energy Network - New round starting on 13th January 2026

Energy is a recurring theme across our existing networks, including Estates and Sustainability. However, with the NHS facing increasing pressure to meet net zero targets and national efforts underway to revise HTM 07-02: Making Energy Work in Healthcare, there's a clear need for a focused platform. The Energy Network offers a deeper dive into energy strategy, providing support and insight for NHS trusts navigating this complex and evolving landscape. The group supports NHS professionals looking to improve energy performance, meet regulatory requirements, or contribute to the NHS's sustainability goals.

[Find  
out  
more](#)

## NHS Car Parking & Sustainable Travel Network - New round starting on 29th January 2026

The aim of this national Network is to embrace the principles of Health Technical Memorandum (HTM) 07-03 on best practice for NHS organisations dealing with car park management and sustainable travel. First launched in 2015, the group is now a highly regarded reference point for central bodies such as NHS England, the national Greener NHS Team and other organisations such as the British Parking Association. Members have identified a lack of definitive national guidance to support them and the wider NHS in the delivery of parking and sustainable travel, which they are seeking to help resolve. With the right support and guidance, parking control and encouraging travel behaviour can be one of the simplest ways to reduce journeys and to lower carbon emissions.

[Find  
out  
more](#)

## Facilities South BVG - New round starting on 11th February 2026

NHS Facilities Managers share new ideas, service innovation, discuss topical issues, measure trust performance, provide cost effective solutions, learn from others creative service redesign and network with like-minded individuals involved in Facilities Management. The group has a broad membership from Acute, Community and Mental Health Trusts with members who have a wealth of experience in managing facilities.

[Find  
out  
more](#)

Members of the group continue to demonstrate enthusiasm for seeking out improvements and developments in their services, providing a solid basis upon which to provide the best available care for patients.

**Interested?** NPAG's Best Value Groups provide a structured networking forum for healthcare professionals to meet, discuss current issues and hear from internal and external experts. Visit our [website](#) to find out more or contact the NPAG team for more information at [info@npag.eastamb.nhs.uk](mailto:info@npag.eastamb.nhs.uk)

# NPAG Training Workshops For Healthcare Professionals

As part of our aim to support NHS and public sector managers, NPAG offers a variety of healthcare training workshops, working with a network of trainers who are experts in their field.

## The NPAG training workshop portfolio includes:

### Workplace Wellbeing

A one-day on-site workshop offering a supportive and practical space for to explore strategies that promote personal resilience, emotional wellbeing and a healthier workplace culture. Through interactive sessions, participants gain tools to manage stress, improve self-awareness and foster positive communication - empowering them to care for themselves while continuing to deliver compassionate care to others.

[Find  
out  
more](#)

### Putting the Patient First: Customer Care & Communication

This one-day on-site training workshop increases awareness of the service user relationships and its importance and impact on your organisation. The bespoke programme will reflect on your organisational core values, ensuring successful and measurable outcomes. Using exercises and various other materials, it will challenge behaviours and attitudes helping promote an excellent service to all service users.

[Find  
out  
more](#)

### Clinical Development for Occupational Health Professionals

Part of a wider series of training modules for 2026, we are concentrating on two of the most in-demand workshops. Each will introduce recent research and developments, teaching critical thinking over academic content. Choose from:

- 17th April 2026 - Performance & Attendance
- 23rd April 2026 - Fitness for Work

Each module represents standalone professional participatory CPD hours.

[Find  
out  
more](#)

## Benefits include:



- ✓ Evidence to the CQC of your commitment to improving patient care through staff training
- ✓ Evidence of contribution towards NHS England's *Promise* to provide a positive and compassionate working culture
- ✓ Practical 'toolkits' to help delegates hone additional skills to enhance their daily role
- ✓ All NPAG workshops are CPD certified, offering standalone professional participatory CPD hours
- ✓ As an NHS organisation, NPAG is able to offer training at very competitive prices

## Who are our workshops aimed at?



Healthcare professionals. Training programmes are tailored and developed to meet delegate and organisational needs.

**Interested?** Visit our [website here](#) to find out more about our workshops here or  
Contact Lynn Maddison for further details and booking information at [info@npag.eastamb.nhs.uk](mailto:info@npag.eastamb.nhs.uk)

# NPAGNetwork

## Supporting our Members

National Performance  
Advisory Group

The NPAG Network is available to all our Members and continues to provide a very welcome service.

NPAG developed the service, recognising the need for a forum for healthcare providers to ask questions, request assistance and information, share documents, and get professional and practical advice from their peers throughout the UK, saving time and money in not reinventing the wheel. Members of the NPAG's Best Value and National Networking Groups form the nucleus of the Network – providing over 600 contacts throughout the UK.



### Here are some recent Network questions:



Do any other Trust use biodegradable disinfected wipes, and if so, do they have a biodegradable waste stream to dispose of them?

**Waste Management BVG Member**

When patients are discharged from hospital what products do they send home with the patient? Do they send a 7-day supply of products as standard? Does this always happen?

Do you have any other arrangements regarding catheters?

**National District Nurses Network Member**

To members of the NPAG who work on Mental Health Contracts, what crockery they you currently use on the inpatient wards and if they use coloured plates where do they purchase these from?

**Facilities North BVG Member**

I am wondering what Electronic Quality Management Systems people are running and to what standards are they accredited to?

**Clinical Engineering South BVG Member**

We are nearing the end of our 5-year managed VoIP service from Maintel (Mitel ICON). I am interested in seeing any tender questions from other trusts that have recently transitioned to VoIP, as this would greatly assist us in developing a new set of questions.

**Telecoms BVG Member**

If you don't currently use the service, please do so. You will not be disappointed! Please send your NPAG Network requests to: [npagnetwork@npag.eastamb.nhs.uk](mailto:npagnetwork@npag.eastamb.nhs.uk)

Please note, you need to be an NPAG member to submit an enquiry and members must have permission to share documentation with NPAG.

# Working in Partnership with NPAG

NPAG has established many important partnerships over the years. We work closely with a number of excellent training providers and business associates.

If this is of interest to you, please contact us: [info@npag.eastamb.nhs.uk](mailto:info@npag.eastamb.nhs.uk)

## What's hot for the coming months:

### National Networking Group Meetings Conferences

#### December

- Health Visiting & School Health Services Network
- Waste Management BVG
- Clinical Engineering North BVG
- Estates BVG
- Telecoms BVG

#### January

- NHS Car Parking & Sustainable Travel Network
- IT & Medical Connectivity Network
- Energy Network
- EPRR Network
- NHS Transport & Logistics BVG
- NHS Sustainability Network
- NPAG Violence Reduction & Security Management Network
- Facilities North BVG

- Digital Switchover Webinar: early 2026
- Theatres and Decontamination Conference (19th May 2026)

### Workshops & Events

- Clinical Development for Occupational Health Professionals training workshops: April 2026
- Putting the Patient First on-site training workshops
- Workplace Wellbeing training workshops

Please contact [info@npag.eastamb.nhs.uk](mailto:info@npag.eastamb.nhs.uk) for more information.

#### CONTACT US

[NPAGNEWS@NPAG.EASTAMB.NHS.UK](mailto:NPAGNEWS@NPAG.EASTAMB.NHS.UK)

EAST OF ENGLAND AMBULANCE SERVICE NHS TRUST,  
CHELMSFORD OFFICE,  
HOSPITAL APPROACH, BROOMFIELD, ESSEX CM1 7WS

