

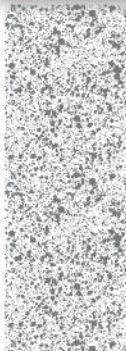


WWW.TCMX.COM.MX



Modular Steel Railway Bridges

for all your projects

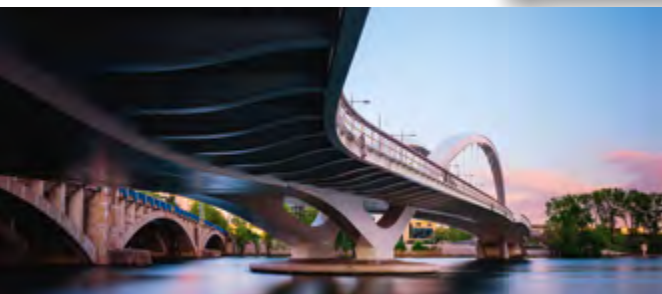




Pioneer since 1932

In a constantly changing world, we must be incessantly one-step ahead, to consolidate our achievements and conquer new markets.

Innovation is the heart of our development.



1932

Creation by Louis Matière of the company specialised in pipelines installation

1970

End of pipelines activities beginning of earthworks activities

1983

Marcel Matière invents a new process of prefabricated reinforce concrete structures, "Matière® box culverts"

1993

Development in the sector of large steel bridges with the acquisition of Larive factory at Bagnac-sur-Célé

1998

Start of activity in French overseas territories (Reunion, Guyana, ...)

2004

Invention of the Unibridge® concept

2005

More than 10,000 "Matière® box culverts" manufactured worldwide

2008

First large export contract in the Philippines

2012

Development of the Matière® Panel Bridge

2013

Acquisition of a Special Works unit (SIRCO)

2017

Expansion of the company with the acquisition of 2 new steel factories

2018

Signature of the largest export contract in Senegal

2020

Acquisition of NFM Factory in Le Creusot

Unibridge®

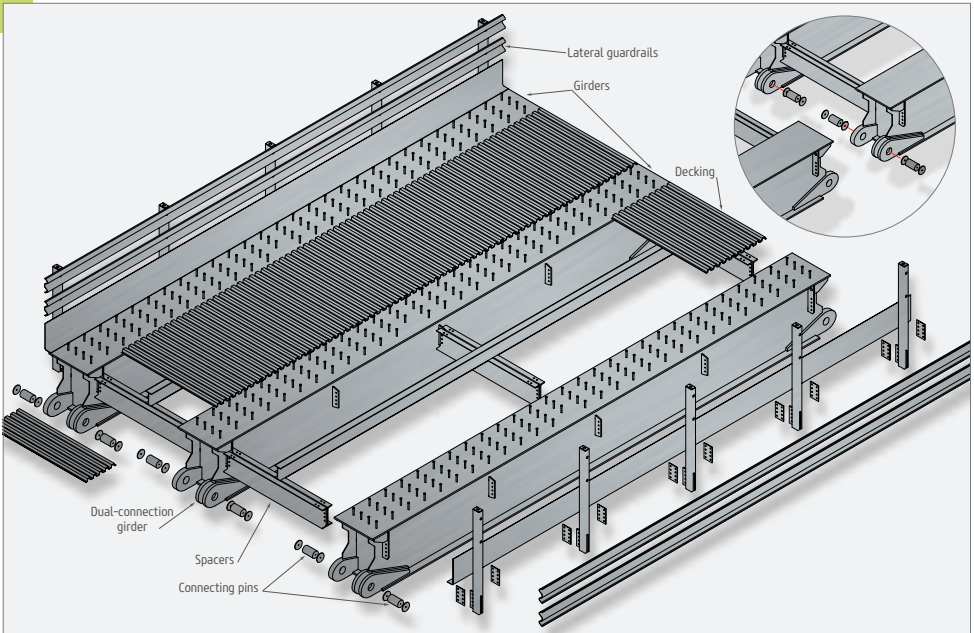
Total modularity

Unibridge® is a unique modular steel bridge system that has been design, developed and patented by Matière® for the international market.

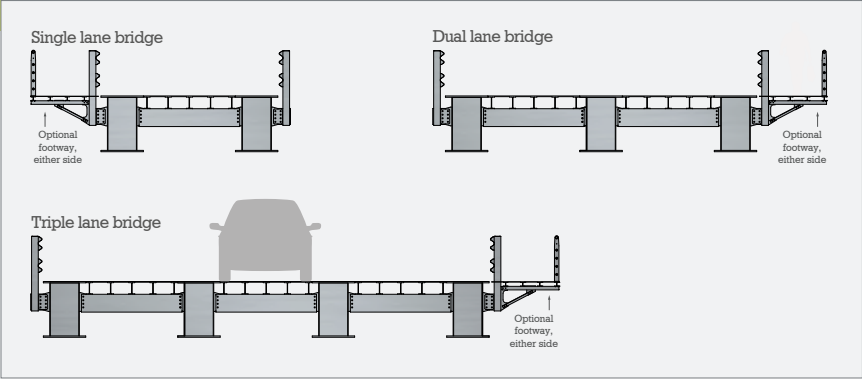
This system is composed of box girders connected together with axis. The modularity of this system make it very easy to ship (all components can feet in standard marine containers) and also very easy to install on site with limited plant and equipment.

This concept has been developed by Matière® since 2004 and we have now Unibridge® references in more than 25 countries around the world.

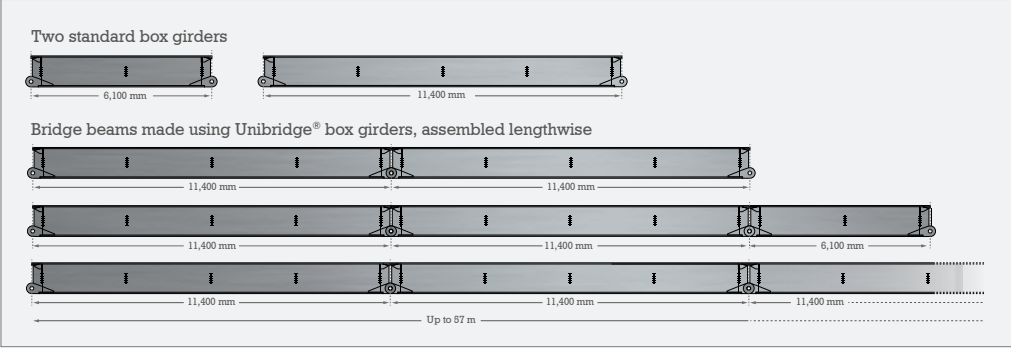
Reduced number of components



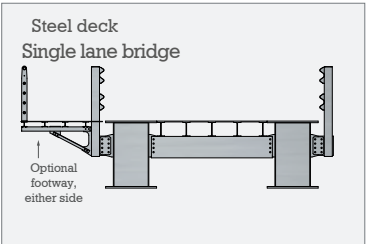
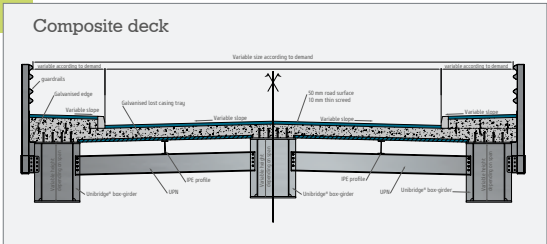
Transversal modularity



Longitudinal modularity



Two deck types and so two utilisations



Unibridge®: the unique bridge modular solution in the world

provided by Matière since 2004

1. Smart design

- Total transversal and longitudinal modularity
- Configured to answer to any client's requirement
- 100 years lifetime



2. Homemade industrial manufacturing

- Matière manufactures its steel pieces: control of cost and time production
- Possibility to visit the factories



Footbridges

Bilder footbridge - Sundsvall - Sweden



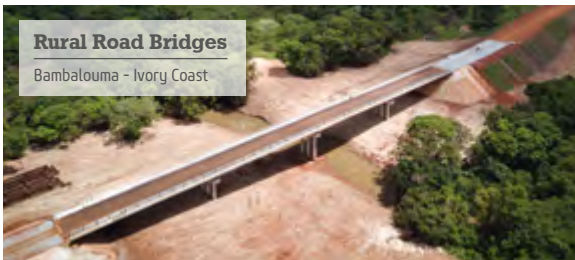
Urban Flyovers

Yoff flyover - Dakar - Senegal



Rural Road Bridges

Bambalouma - Ivory Coast



Urban Highways

Unibridge® Project - Indonesia



3. Optimized transportation

- The Unibridge® has been designed in order to fit in maximum (length, height and weight) with containers



4. Fast construction

- No welding and painting
- Easy and fast assembly
- Time saving, even in remote and complex areas



Railway Bridges

Rail Bridge - Agboville - Ivory Coast



Metro Bridges



Road Bridge Replacement

Unibridge® composite deck - Philippines



Rail Bridge Replacement

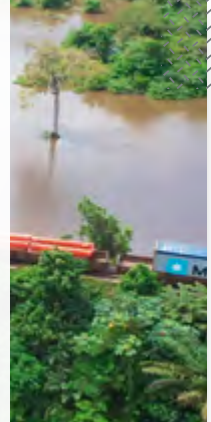
Unibridge® Project - Dakar - Senegal



Unibridge® for railway application



- Unibridge® for **railway** and **metro line** elevated structures
- Two deck configurations: **steel** or **steel and concrete**
- **New bridge** for new railway track or **replacement** of old railway bridge
- **Single** or **double** tracks with standard **25 t** axle load
- Train speed up to **200 km/h**
- Very **quick installation** (few hours): reduced interruption of traffic
- No welding, no painting on site
- Span up to **42 m long**



Replacement

Railway Bridge Replacement

Agboville Rail Bridge - Ivory Coast



New line

Railway Bridge for new line

Unibridge® Project blueline - Niger



Agboville Rail Bridge, Ivory coast





“

Matière® offers its customers a complete service, from design to installation, an economical solution adapted to each problem, with all the guarantees in terms of quality, safety and environment.

Unibridge® for Railways

All steel configuration

Single track



Double tracks





Unibridge® for Railways

Steel and concrete configuration

Single track



Double tracks





Unibridge® for Metro Lines

Steel and concrete configuration

Single track



Double tracks





Main Railway Project references



OA14 - Bettembourg
Luxembourg, 2022

- 208m long and 43m high
- Longest Bow-string rail bridge in Europe for high speed train



Le Lez Viaduc
Lattes, France, 2015

- 90m long and 19m high
- Bow-string Rail bridge for high speed train



Raymond Barre Bridge
Lyon, France, 2014

- 262m
- Bow-string Bridge for Tram, cycles and pedestrians