

TSP

TECHNICALLY SUPERIOR PRODUCTS



**WHERE THERE IS WEAR
WE ARE THERE**

1800 TSP 123

TSPGROUP.COM.AU

WEAR PARTS FOR THE QUARRY INDUSTRY

HARI OM Composite Weld Overlay Wear Plates

- HARI OM (HEAVY ABRASION RESISTANT & IMPACT OPULANT MATERIAL) Wear plates available in 5MM to 50MM thickness (Standard)
- Full Sheets and ready to install custom shapes with countersunk holes & studs.
- Chutes
- Hoppers
- Dump Truck Body Liners
- Bucket Liners



TEDGE For Loaders, Skidsteers & Scrapers

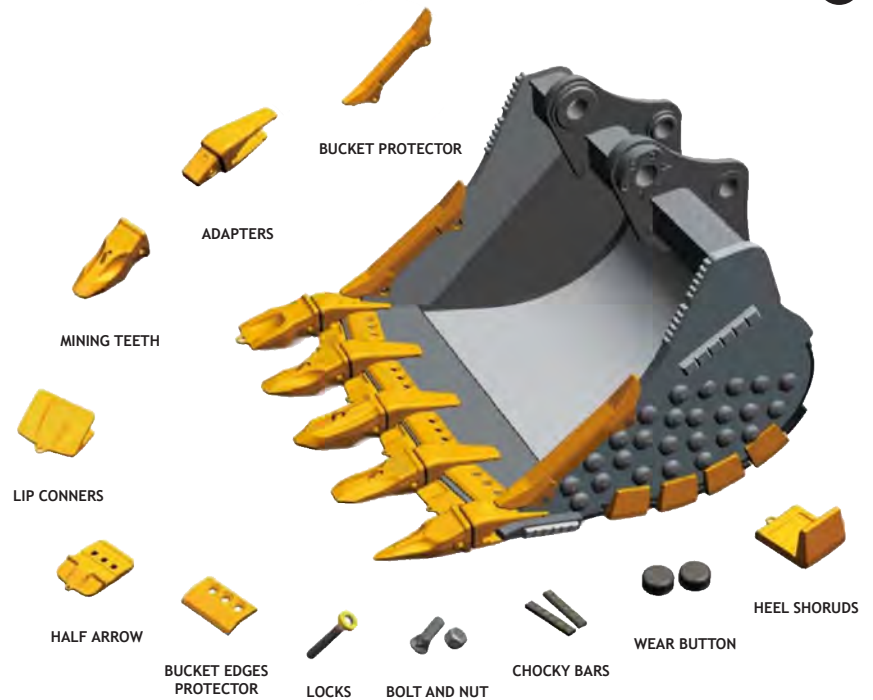
Tedge, A Proprietary Product Is Designed To Multiply Cutting Edge and bucket Life with Additional Related Benefits:

- Better Bucket Penetration
- Improved Bucket Fill
- Improved Fuel Consumption
- Reduced Engine & Transmission repair
- Reduced Tyre Wear
- OH&S Benefit from Reduced Weight
- In A Mixed Brand Fleet, Bucket Lip Re- Design Can Reduce Cutting Edge Inventory With Increased Interchangeability



BUCKET TEETH, ADAPTORS & RETAINERS

- Material Grades Higher than Normal (Ni & Mn)
- Suitable for various makes & models
- For 5T to 50T Excavators
- Heat treated
- Full warranty against breakage when fitted and used as designed
- Various designs to suit different applications



INCREASE YOUR BUCKET LIFE BY 75%

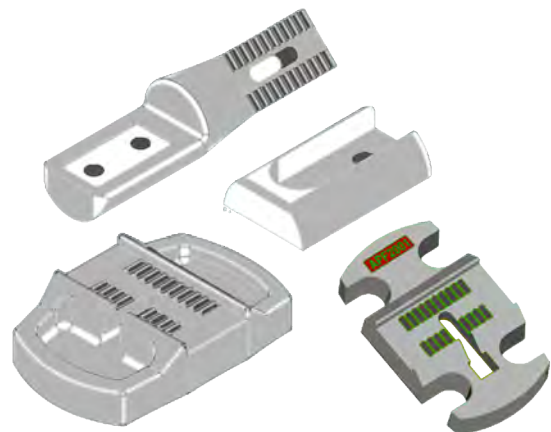
EXCAVATOR & LOADER BUCKETS AVAILABLE



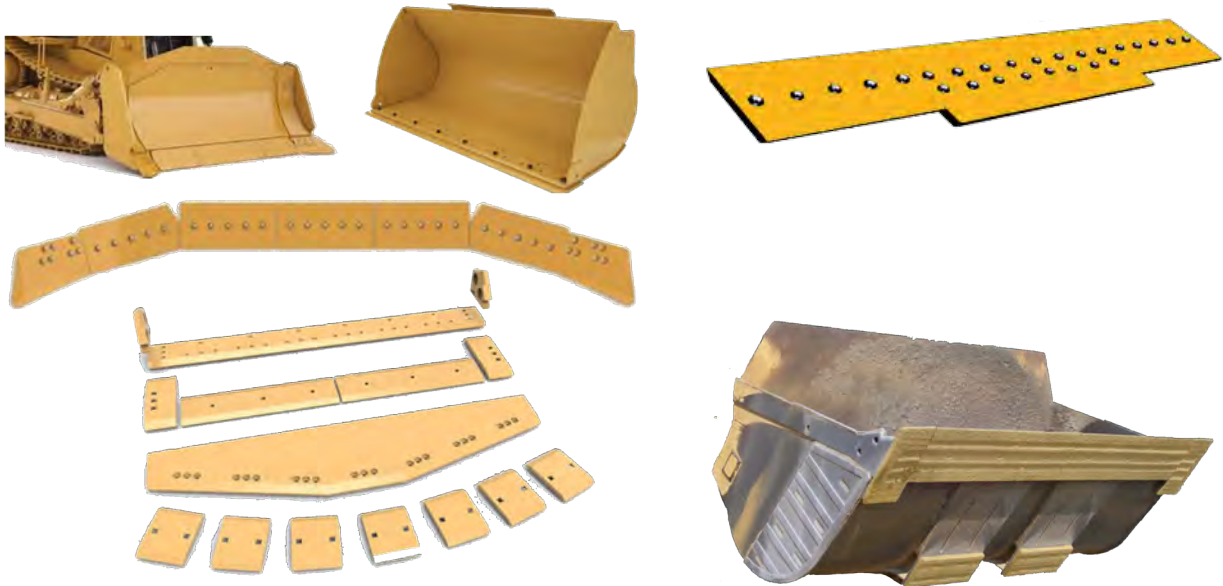
REDUCE PUGMILL DOWNTIME

PUGMILL PADDLES FOR QUARRIES & ASPHALT PLANTS

- Paddle Arms (Cast & Fabricated)
- Paddle Faces (Cast & Fabricated)
- Hardware in 8.8 and 10.9 grade
- Hi Manganese, NiHard-1 and NiHard 4
- Multiple designs on offer to suit existing or new design Pugmills



Traditional cutting edges for Loaders, Scrapers & Dozers for Quarry Floors



Custom cutting edges for Concrete Floors

- Traditional cutting edges dig into concrete floors, thus scraping off the concrete and causing damage to the floor as also contamination to the material handled.
- Our special Proprietary design allows the cutting edge to glide on the concrete surface to avoid damage and contamination.
- For the paper scrap handling applications where sparks from traditional steel edges is a fire hazard we offer ANTI-SPARK cutting edges





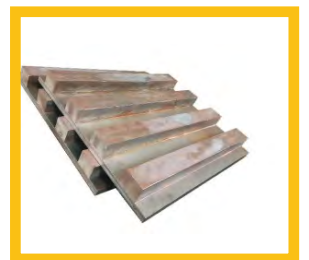
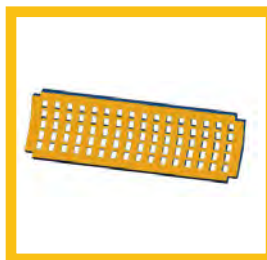
CRUSHER WEAR PARTS

- Anvils
- Deflector Plates
- Jaw Plates
- Phantom Plates
- Blow Bars
- Apron Plate
- Impact Plates
- Flight Shoe
- Ceramic Inserted Wear Products



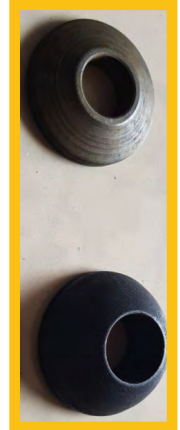
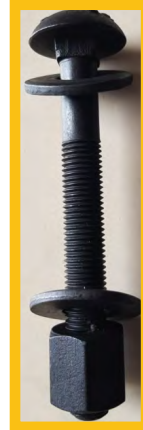
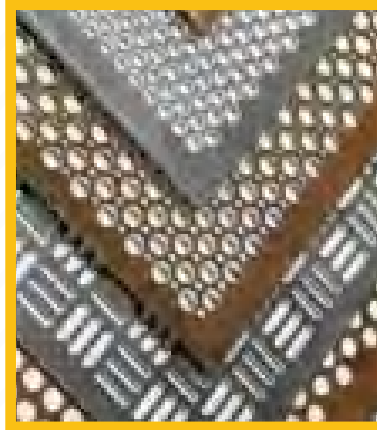
BIMETAL WHITE IRON WEAR PARTS

- Chocky Bars
- Chocky Flats
- Grates
- Skid Bars
- Box Liners
- Grizzly Bars
- Wear Blocks
- Wear Plates
- Anvils
- Special Shape Wear Components



Screen Hardware

- Punch Plates
- Strainer Bars
- Support Bars
- Poly Coated Bars
- Screen Media in Metal & Polyurethane
- Polyurethane Sheets
- Trommel Drums



High Grade Cutting Edge & Crusher Hardware

- Cutting Edge Hardware
- Crusher Bolts/Nuts
- Track Hardware
- Grouser Bars
- Screen Tension Bolts
- Spherical Washers
- Lock Nuts/ Washers
- Nyloc Nut/Washers
- Socket Head Hardware
- Hex Bolts, Nuts/Washers



Address: PO BOX 3532 Wheelers Hill VIC 3150 AU

PH: 1800 TSP 123 / 0421380700

Email: tej@tspgroup.com.au



About us:

Established in 1991 and rebranded to TSP Group of Companies in 2001, TSP Group has deep experience and knowledge in the Construction and Materials Processing industry in Australia. TSP Group's foundations are built off, "put the customer first and provide Technically Superior Products". We ensure tailored solution to your unique situation

Our visions:

To be Leaders in our business activities. Innovative in our technology. Proactive in our management and Transparent in our dealings.

Sustainability:

TSP believes in Sustainability and is committed to improving the living standards for all those in our world. We believe in strong governance, ethical and moral practices At TSP, we encourage Employees & local communities to drive sustainable work practices.

Key Customers



Cutting edge design that improves bucket lifespan equipment performance and operator efficiency.

The primary reason customers spend money on expensive Front End Loaders is to use the bucket, therefore why not focus on its long and productive health, which has been long neglected by band aid and traditional solutions only. This reduces the productivity but since it is not measured, it goes unnoticed. With increasing pressure on quarry managers to increase productivity while reducing costs and minimising downtime, many quarries are looking to new maintenance products and technologies to help achieve this.

Thanks to some smart yet simple engineering by Tej Panesar, Head of Strategy and Operations at TSP Group – a revolutionary cutting edge named **TEDGE** which is versatile, universal in its application to suit all sales loaders and has a very low cost per hour of use. It is specifically designed to increase the replacement life of the cutting edge, saving time and money and increasing bucket efficiency. It also has associated reduction in maintenance costs of engines, transmission, pins and bushes, final drive and tyres.



TSP
TECHNICALLY SUPERIOR PRODUCTS

Improvements over the years have ranged from a single bevel to a double bevel reversible and from one piece to three or four pieces. It has still not solved the problem of the majority of the expensive cutting edge being wasted.

To address this, he designed and manufactured the TEDGE cutting edge, which smartly dissects the whole cutting edge into small manageable size special design pieces with two, three or four holes and a locating system that allow the cutting edge to take a tooth pattern and still remain a flat edge at the same time; a unique combination that promotes easier penetration and better bucket fill amongst other associated benefits. This encourages better operator efficiency and ease of operation.

"In addition to the cost savings, the TEDGE reduces wastage due to traditional incomplete use of the cutting edge, eliminates the need for special tools to handle the cutting edge and associated OHS concerns and reduces downtime each time it is to be replaced," Tej said.

By allowing for multiple configurations of the edge set up based on the material being handled and site conditions, the TEDGE can be used for a variety of applications on a variety of equipment.

Fulton Hogan is a leading producer and contractor of asphalt products and services across Australasia with access to high-quality stone, rock, asphalt and emulsions. Phillip Olsson, Divisional Manager and Stephen McArthur, production manager at Fulton Hogan use the TEDGE for loader work in the quarrying and asphalt part of the business. They explained that the offset teeth of the TEDGE helps load the material more efficiently while taking the pressure off the loader, helping to extend the lifespan of the machine.

In addition to the superior product, Fulton Hogan values the service and support provided by TSP Group. *"The response time is really quick and we find that Tej often knows what we need before we need it, he really understands his products and their life expectancy. It's this kind of responsive service with a quick turnaround time that really sets TSP Group apart,"* explained Stephen.

Andrew Goldman Excavations also values Tej's service and support. *"We do a wide variety of excavating and often require individual products."*

Tej works with us to understand the application and he then designs individual products for us, an edge to suit the conditions," said Andrew.

"Since its inception in 2000, the CMPA has grown in its membership, endeavour and unity; and is now widely regarded as a premier organisation committed to bringing about positive change for its membership in the construction material industry," Tej explained.

Ron Kerr, Honorary CEO of the CMPA added, *"Tej's, as all other Associates personal and financial commitment to the aims and objectives of the CMPA since joining in 2010 has been humbling. No request made of him has ever been too difficult and he has always put his mind to the challenge and the customers' needs. His interest in the industry is reflective of his continued presence."*

Andrew Burdett from Burdett Sands was at first dubious of trying something new so started by installing the TEDGE on one machine. *"We now run the TEDGE cutting edges on everything; excavator buckets to loader buckets and it has made life a lot easier for us by allowing us to get more life out of the bucket,"* he said.

Also working with sand and soft rock, Anthony Graham at Graham Quarries found that the TEDGE cutting edges promote better wear and are easier to maintain. *"The TEDGE really gets into the stockpile better in soft rock and breaks up small lumps in the sand,"* he said.

As a CMPA preferred supplier, TSP Group works closely with the association's members to help them meet their operational requirements and address industry challenges.