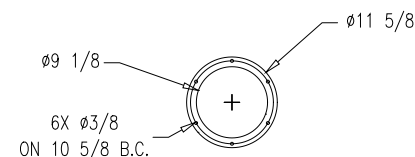
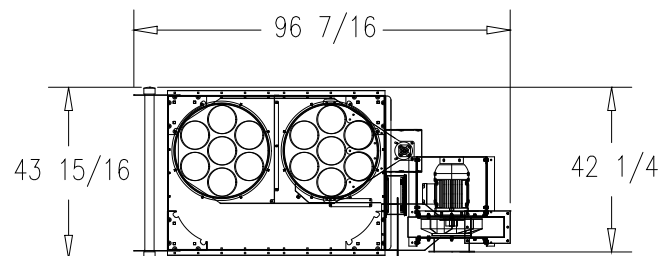


REV	DESCRIPTION	BY	DATE
A	CHANGED BAG CALL OUT	FK	09-12-2008

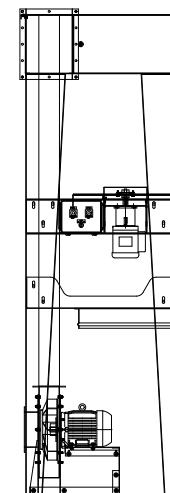
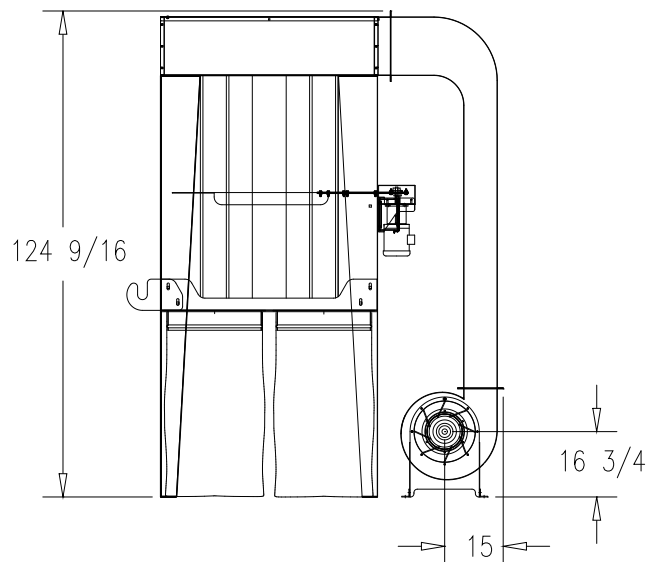
IRD SPECIFICATIONS

14EA. FILTER BAGS 60" LONG. MEDIA AREA:128 SQ. FT.
 2 EA. DISCHARGE PORT(S) FOR WASTE COLLECTION
 STAINLESS STEEL QUICK RELEASE BAG CLAMPS
 12 GA. MILD STEEL FILTER HOUSING AND SUPPORT LEGS
 MODEL 909 RB-100/50 DIRECT DRIVE HIGH OUTPUT
 MATERIAL HANDLING BLOWER WITH 5 HP,
 230/460/3/60 1800 RPM TEFC ELECTRIC MOTOR
 FILTER TO FAN TRANSITION
 PRIMED AND PAINTED INDUSTRIAL ENAMEL
 SUPPLY OF 50 PLASTIC DISPOSABLE 6MIL BAGS
 PUSH BUTTON MAGNETIC STARTER
 120V SHAKER (optional)

CONTROL PANEL	PLEASE SPECIFY	<input type="checkbox"/> 208V
VOLTAGE	VOLTAGE CUSTOMER WILL	<input type="checkbox"/> 230V
	SUPPLY TO CONTROL PANEL	<input type="checkbox"/> 460V



FAN INLET
FLANGE DETAIL



JOB NO.:	MODEL:
	260-IRWD-909RB-100/50-5HP

APPROVED

PLEASE SIGN AND DATE. THIS APPROVAL
DRAWING MUST BE SIGNED BEFORE DONALDSON CO.
WILL CONTINUE ON YOUR PROJECT.

THIS DRAWING IS APPROVED: (CHECK ONE)

- ☐ AS DRAWN FOR CONSTRUCTION
☐ AS NOTED FOR CONSTRUCTION
☐ PLEASE MAKE REVISIONS NOT APPROVED

SIGNATURE

DATE

THIS DOCUMENT CONTAINS INFORMATION THAT IS
CONFIDENTIAL AND/OR PROPRIETARY TO DONALDSON
COMPANY, INC. ALL RIGHTS TO DISCLOSE, COPY,
REPRODUCE, MANUFACTURE FROM OR DISPOSE OF THIS
DOCUMENT OR ITS CONTENTS ARE RESERVED UNLESS
SPECIFIED IN WRITING BY DONALDSON.
© Donaldson Company, Inc.

UNLESS OTHERWISE SPECIFIED
DIMENSIONS ARE IN INCHES.
TOLERANCES ARE:
FRACTIONS: .XX ± .010 ANGLES: ±1°
± 1/16 .XXX ± .005

TITLE:
260-IRWDR-909RB-100/50-5HP
GENERAL ARRANGEMENT

SIZE: A	SUBTITLE:
DRAWN BY: FK	
FILE: IRWD260F909R.dwg	SHEET: 1 OF 1
SCALE: 1/4=1'0	COPYRIGHT © DONALDSON COMPANY, INC
DATE: 4-23-08	DWG. NO.: 20080169
	JOB NO. FILTERS

