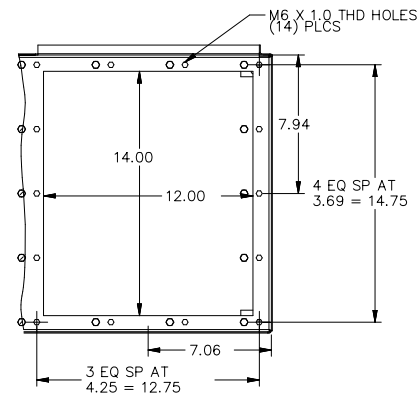


PLAIN VIEW



INLET MOUNTING PATTERN

# SPECIFICATIONS FOR DRYFLO MIST COLLECTOR MODEL DMC-MMA

NO. OF CARTRIDGE FILTERS 1

FILTER DIMENSIONS 10.85 DIA X 8.00 LG

ACTUAL FILTER AREA 41 SQ FT

RATED AIR FLOW 250 CFM NOMINAL

\*EXPECTED MAXIMUM AIRFLOW 390 CFM

\*TYPICAL MINIMUM AIRFLOW (AT FILTER REPLACEMENT) 180 CFM

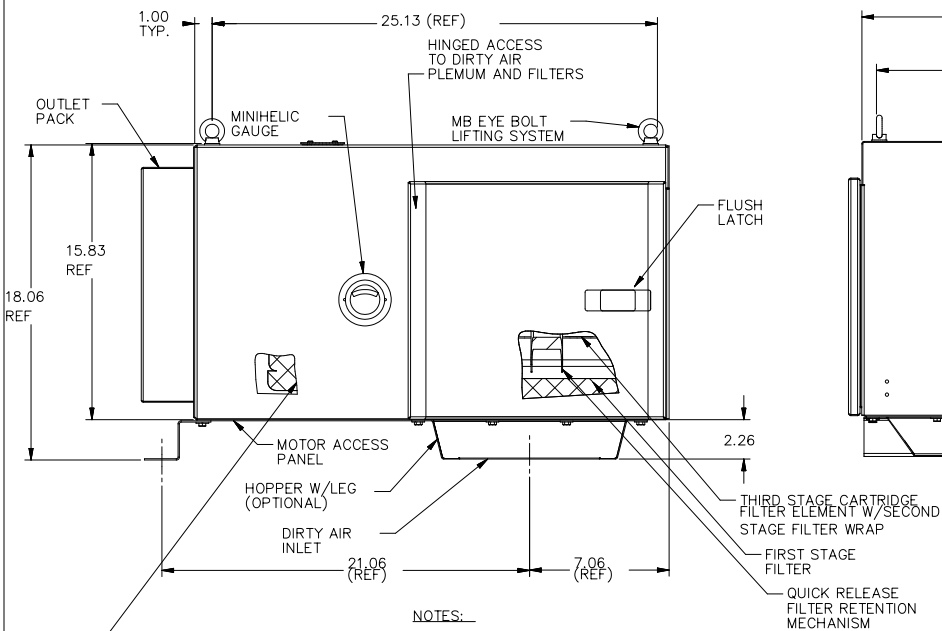
SOUND LEVEL 65 DBA

HOUSING RATING  $\pm 10$  H<sub>2</sub>O

UNIT CONSTRUCTION 16 GA STEEL

FINISH BLUE (OPTIONAL COLORS AVAILABLE)

APPROXIMATE WEIGHT (WITHOUT OPTIONS) 85 LBS

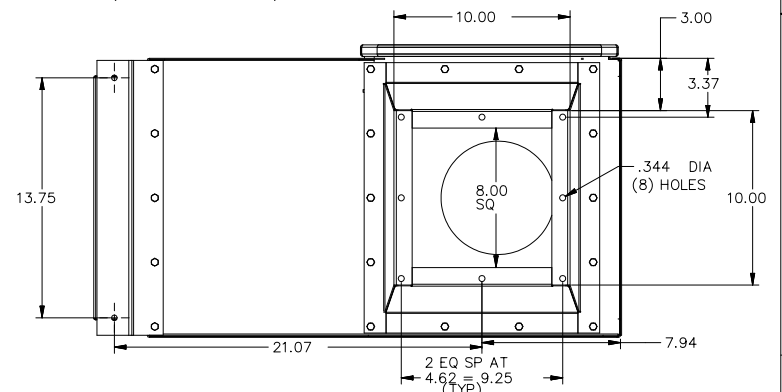


## NOTES:

- IN NORMAL APPLICATIONS THE PRESSURE DROP ACROSS A CLEAN FILTER WILL BE APPROXIMATELY 2" H<sub>2</sub>O. WHEN THE FILTER REACHES ITS REPLACEMENT LEVEL THE PRESSURE DROP WILL BE APPROXIMATELY 4" H<sub>2</sub>O.
- AIRFLOW WAS MEASURED IN A 6" DIAMETER RAW EDGE DUCT BY 60" LONG. (ACTUAL DUCT LOSS AT MAXIMUM AIRFLOW MEASURED .5" H<sub>2</sub>O) ACTUAL FLOW WILL VARY WITH SYSTEM DESIGN.
- DO NOT INSTALL OR OPERATE THIS EQUIPMENT UNTIL HAVING READ AND UNDERSTOOD THE INSTRUCTIONS AND WARNINGS IN THE INSTALLATION AND OPERATION MANUAL. FOR REPLACEMENT MANUAL CONTACT DONALDSON COMPANY, INC. (800)365-1331


TORIT DRYFLO

PATENT NUMBER  
5,611,922  
6,007,608



FOOT PRINT W/OPTIONAL HOPPER INLET

THIS PRINT IS NOT CERTIFIED FOR CONSTRUCTION PURPOSES. THE DOCUMENT IS SUBJECT TO CHANGE WITHOUT NOTICE

MATERIAL	RELEASE NO. 1994A7079		TITLE		 Donaldson Corporation Greenville, SC, USA						
	DATE APR 1995		DRYFLO MIST COLLECTOR								
	EXP DATE -		DMC-MMA								
REFERENCE	DWN P. WENDT		NUMBER	DMC 3978900							
	DATE NOV 07, 2000		SCALE NONE								
	CHK J. GLEN										
PREVIOUS DRAWING NO.	DATE APR 1995		SCALE	NONE	SHEET 1 OF 1	REVISION					
	APVD M. TERRY		C/C		UG/CADD	8					
	DATE APR 1995		SECTIONAL SIZE -		OUTLINE SIZE -						
DO NOT SCALE	TOLERANCES UNLESS OTHERWISE SPECIFIED	3 PL ±.015	DESIGN CONTROL		A004	DWG LOCATION	A101	VERSION	A	L	D
ANGLES ±2°	THIRD ANGLE PROJECTION		COPYRIGHT © DONALDSON COMPANY, INC.								

