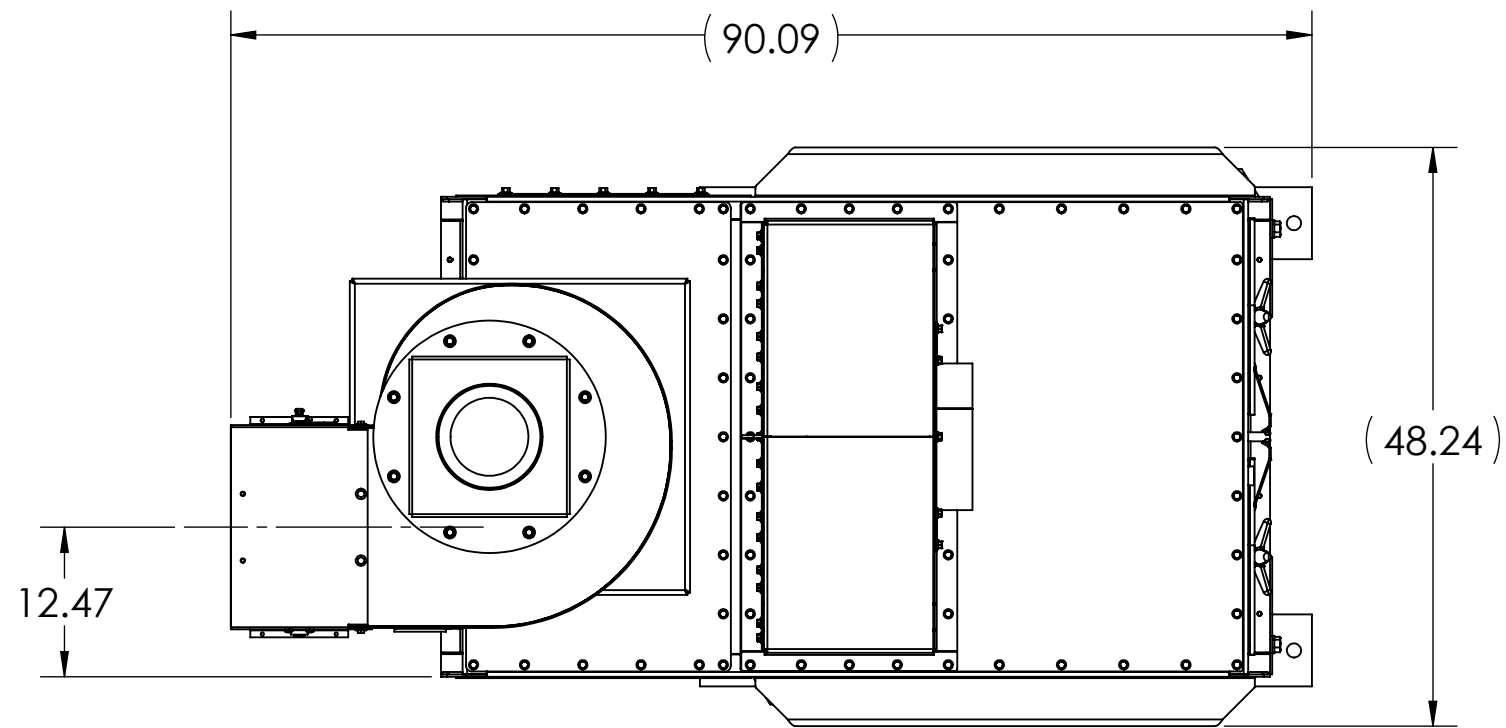
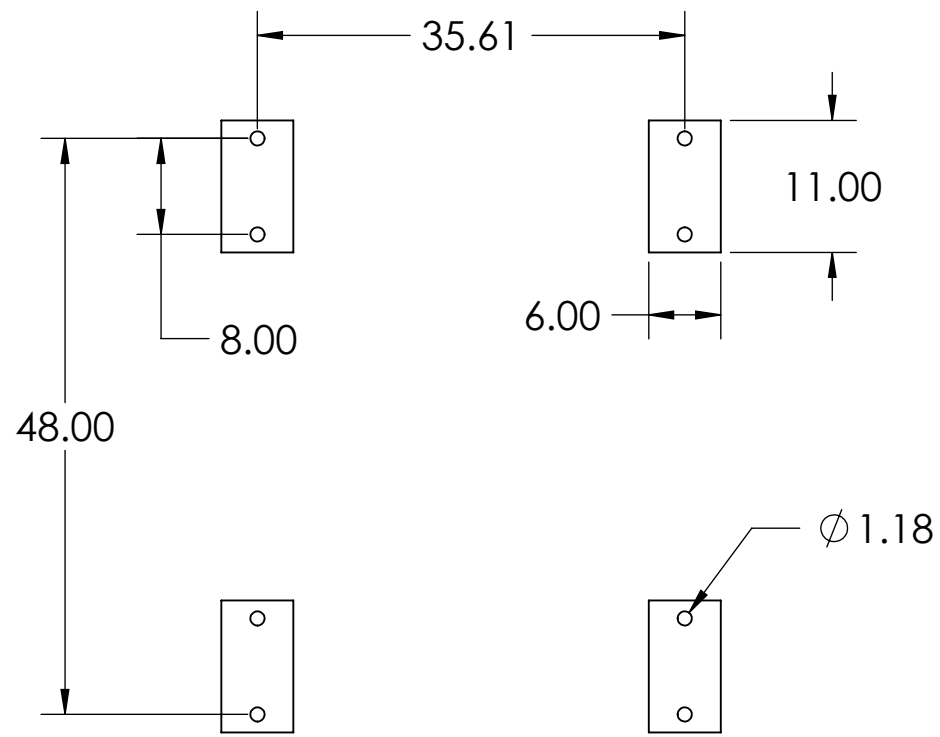


THIS DOCUMENT CONTAINS INFORMATION THAT IS CONFIDENTIAL AND/OR PROPRIETARY TO DONALDSON COMPANY, INC. ALL RIGHTS TO DISCLOSE, COPY, REPRODUCE, MANUFACTURE FROM OR DISPOSE OF THIS DOCUMENT OR ITS CONTENTS ARE RESERVED UNLESS SPECIFIED IN WRITING BY DONALDSON.

REVISIONS		
REV	DESCRIPTION	DWN/DATE



TOP VIEW



SECTION A-A
FRONT OF COLLECTOR
ANCHOR BOLT PLAN

SPECIFICATIONS
DFE 2-4

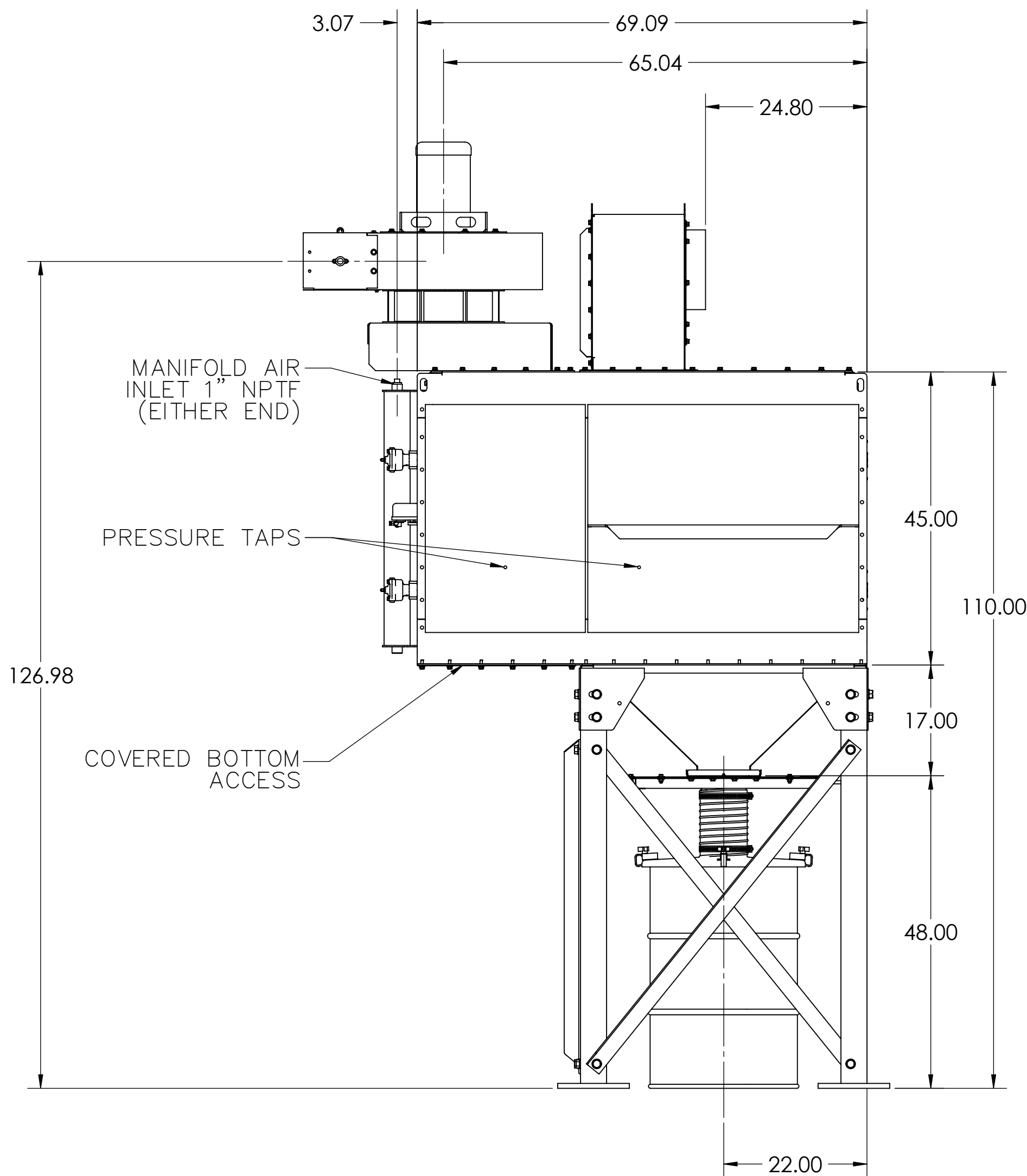
POWER_____5 HP POWER PACK-STL
208/60/3 TEFC TBI W/
DAMPER & GRILL
REMOTE TIMER_____110 VAC 50/60 HZ
NUMBER OF FILTERS_____4 ULTRA-WEB
ACTUAL FILTER AREA_____1,016 SQ FT
P-RED_____0.40 BAR
OPERATING TEMPERATURE_____180 DEGREE F MAXIMUM
NUMBER OF VALVES_____4
COMPRESSED AIR REQUIRED_____5.2 SCFM @ 90-100 PSIG
HOUSING RATING_____ -25" WC
FINISH_____NATIONAL BLUE
APPROXIMATE WEIGHT_____2,200 POUNDS

IBC 2018 SPECIFICATIONS:

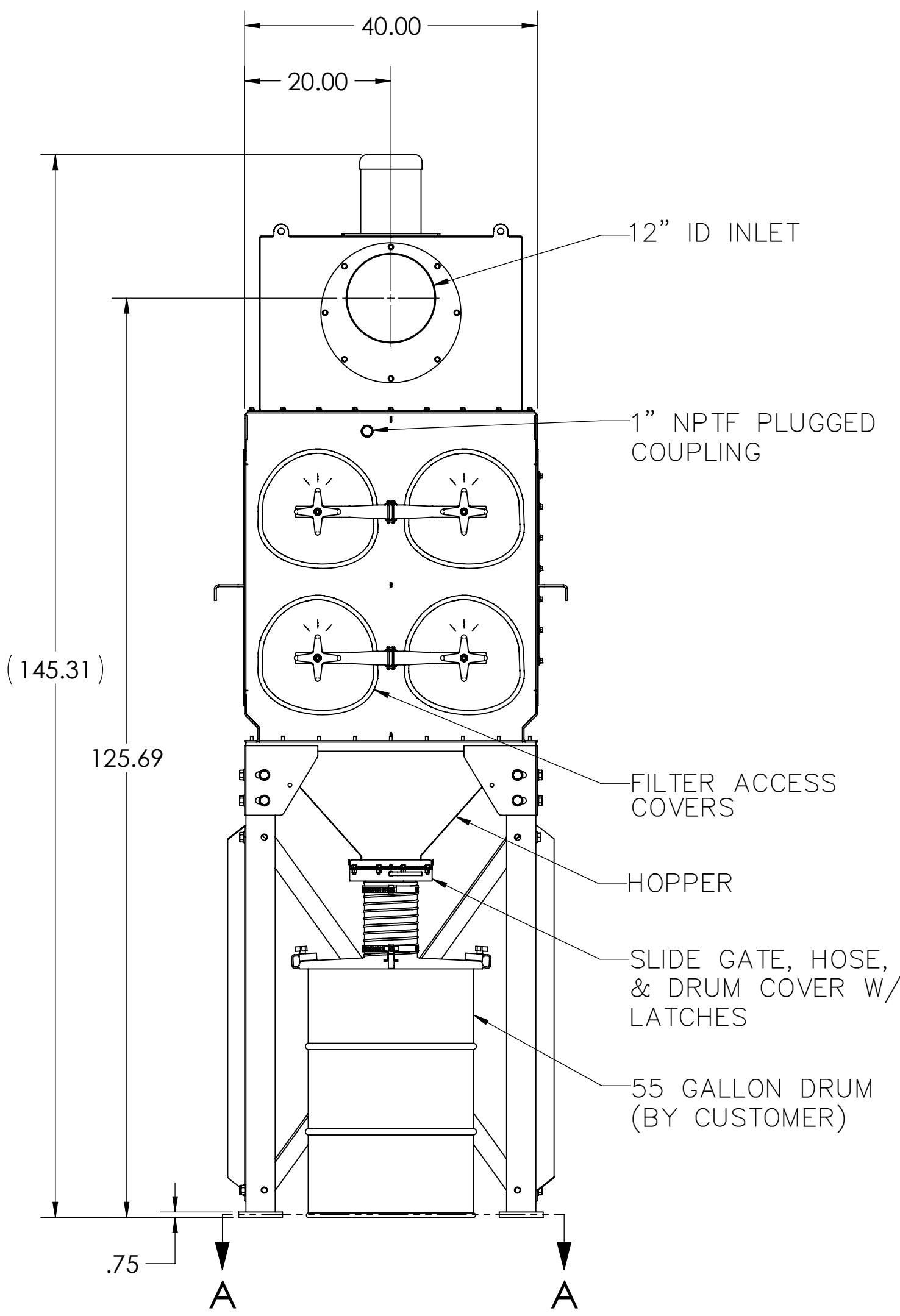
RISK CATEGORY 2
BASIC WIND SPEED & EXPOSURE: 115 MPH, EXPOSURE C, 3 SEC GUST
SEISMIC SPECTRAL ACCELERATION, S_s=1.50 & S₁=0.60, SITE CLASS D
GROUND SNOW LOAD, P_g: 40 PSF
ROOF LIVE LOAD, L_r: 20 PSF
COLLECTOR BASE AT GRADE

NOTE

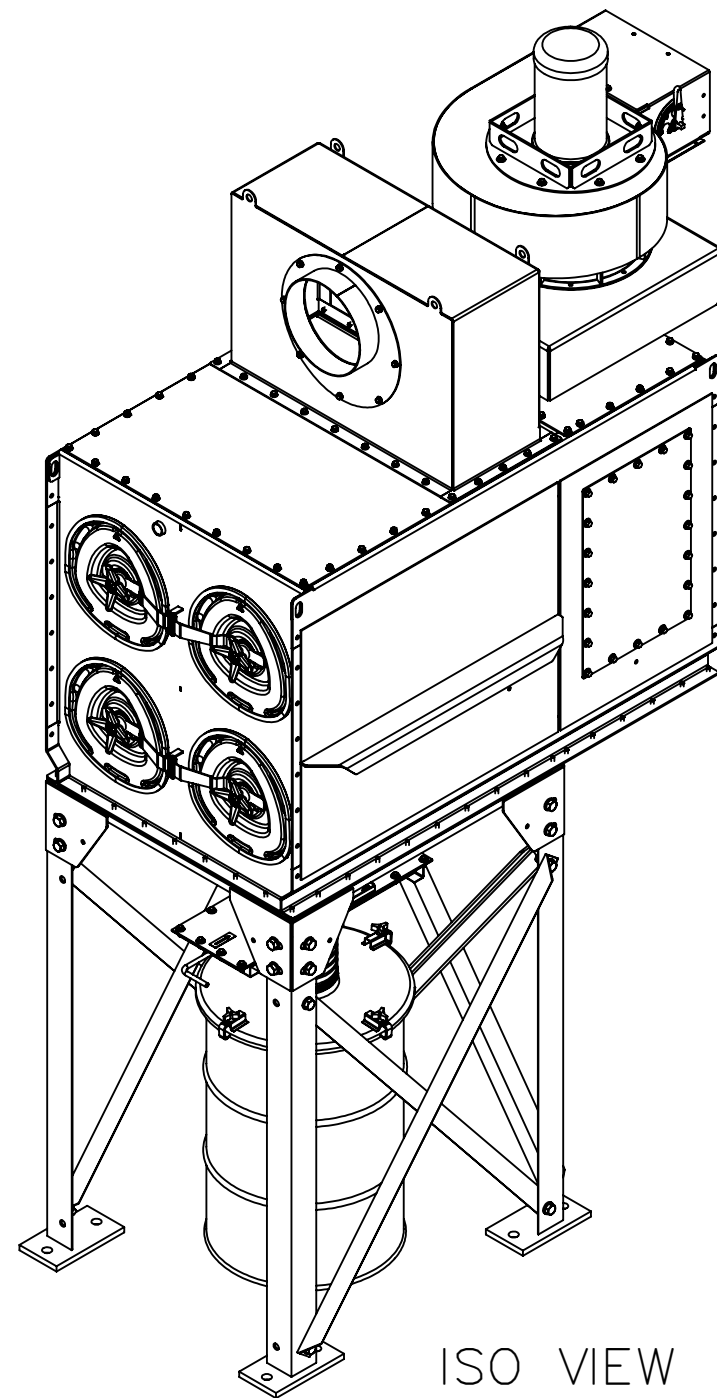
- DO NOT INSTALL OR OPERATE THIS EQUIPMENT UNTIL YOU HAVE READ AND UNDERSTOOD THE INSTRUCTIONS AND WARNINGS IN THE INSTALLATION AND OPERATION MANUAL. FOR A REPLACEMENT MANUAL CONTACT DONALDSON CO INC. (800)-365-1331.
- ANCHOR BOLTS BY OTHERS PER LOCAL CODES.





LEFT VIEW



FRONT VIEW



ISO VIEW

MATERIAL			RELEASE NO.		TITLEDFE 2-4 DUST COLLECTOR				<div> Donaldson Co., Inc. Minneapolis, USA</div>					
			DATE											
			EXP DATE		NUMBER IG15111487L001									
			DWN B MAUS											
REFERENCE			DATE 2/23/2021		SCALE NONE						SHEET 1 OF 1		REVISION 0	
			CHK											
			DATE											
PREVIOUS DRAWING NO.			APVD		C/C				SW/CADD		IAF			
			DATE		SECTIONAL SIZE		OUTLINE SIZE							
DO NOT SCALE	TOLERANCES UNLESS OTHERWISE SPECIFIED	2 PL ±	THIRD ANGLE PROJECTION		DESIGN CONTROL A501				DWG LOCATION A888		VERSION A			
		3 PL ±												
		ANGLES ± °			COPYRIGHT © DONALDSON COMPANY, INC.									

IG15111487L001_A_SEC1.SDDRW Tuesday, February 23, 2021 7:55:48 AM