

Technical sheet :

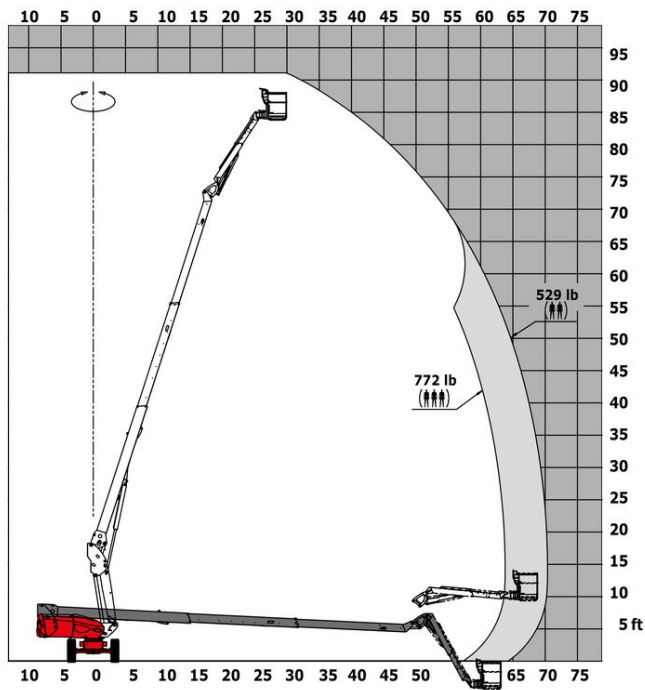
TJ 85



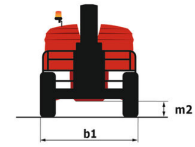
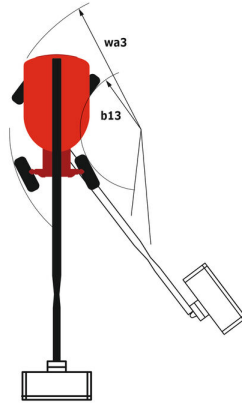
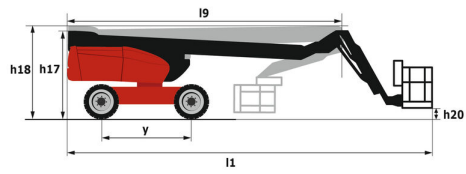
Capacities		Imperial
Working height	h21	91 ft 10 in
Platform height	h7	84 ft 6 in
Max. outreach	r1	70 ft 4 in
Pendular arm rotation (bottom)		+62 °
Platform capacity / capacity (maximum)	Q	529 lbs / 772 lbs
Turret rotation		360 °
Platform rotation (right / left)		90 ° / 90 °
Number of people (inside / outside)		2 / 3
Weight and dimensions		
Platform weight*		36350 lbs
Platform dimensions (length x width)	lp / ep	7 ft 7 in x 2 ft 11 in
Overall width	b1	8 ft 2 in
Overall length	l1	37 ft 3 in
Overall height	h17	8 ft 11 in
Overall length (stowed)	l9	26 ft 7 in
Overall height (stowed)	h18	8 ft 11 in
Floor height (access)	h20	1 ft 7 in
Jib length	l13	12 ft 6 in
Counterweight offset (turret at 90°)	a7	4 ft 8 in
Internal turning radius (over tyres)	b13	6 ft 6 in
External turning radius	Wa3	14 ft 3 in
Ground clearance at centre of wheelbase	m2	1 ft 4 in
Wheelbase	y	9 ft 2 in
Performances		
Drive speed - stowed		3 mph
Drive speed - raised		0 mph
Gradeability		37.50 %
Wheels		
Tyres type		Solid Tyres Cured-On
Drive wheels (front / rear)		2 / 2
Steering wheels (front / rear)		2 / 2
Braking wheels (front / rear)		2 / 2
Engine/Battery		
Engine brand / model		Kubota - D1803-CR-TIE4B
I.C. Engine power rating / Power (kW)		49.60 Hp / 37 kW
Miscellaneous		
Ground Pressure		323 PSI
Hydraulic Pressure		5802 PSI
Hydraulic tank capacity		25 US gal
Fuel tank		19 US gal
Sound level at platform		0.50 dB(A)
Vibration on hands/arms		< 0 m/s²
Standards compliance		
This machine is in compliance with:		ANSI A92.20-2018 CSA B354.6 ICES-002-Issue 6 Standard Canadian EMC

TJ 85 - Load chart

Load Chart for AWP Imperial



TJ 85 - Dimensional drawing



Equipment

Standard

4 simultaneous movements

4 wheel drive

4 wheel steer with crab mode

Audible alarm and illuminated indicator lamp (leveling, overload, lowering)

Backup electrical pump

Basket 2,300 mm

Battery cut-off

CAN bus technology

Continuous turret rotation

Dead man pedal

Differential locking on rear axle

Electronic platform compensation

Emergency stop button in platform and on frame

Engine on swivel chair

Front axle with limited slip

Fuel gauge with low level indicator

Hom in the platform

Hour meter

Lift and drive

Oscillating front axle

Remote control for transport

Telescopic jib

Water heater

Optional

Air predisposition

Beep on every movement

Beep upon travel

Biodegradable oil

Catalytic cleaner

Coded anti-start

Cold weather kit

Initial verification report before putting into service

Key lock on fuel tank

Lockable fuel cap

Non-marking tyres

Non-marking tyres

Onboard generator (3,5 or 5 kW)

Onboard generator (5 kW)

Personalized paintwork

Refinery kit

SMS : Safe Man System

Safety harness

Screen protection on the lower box control

Welder ready package

Working light



Siège Social

430 rue de l'Aubinière - 44150 Ancenis Cedex - France

Tel: +33(0)2 40 09 10 11 - Fax: +33 (0)2 40 09 10 97

www.manitou.com



This brochure describes versions and configuration options for Manitou products which may be fitted with different equipment. The equipment described in this brochure may be standard, optional or not available depending on version. Manitou reserves the right to change the specifications shown and described at any time and without prior warning. The manufacturer is not liable for the specifications given. For more information, contact your Manitou dealer. Non-contractual document. Product descriptions may differ from actual products. List of specifications is not comprehensive. The logos and visual identity of the company are the property of Manitou and may not be used without authorisation. All rights reserved. The photos and diagrams contained in this brochure are provided for information only.

MANITOU BF SA - Limited company with board of directors - Share capital: 39,668,399 euros - 857 802 508 RCS Nantes