

Technical sheet :

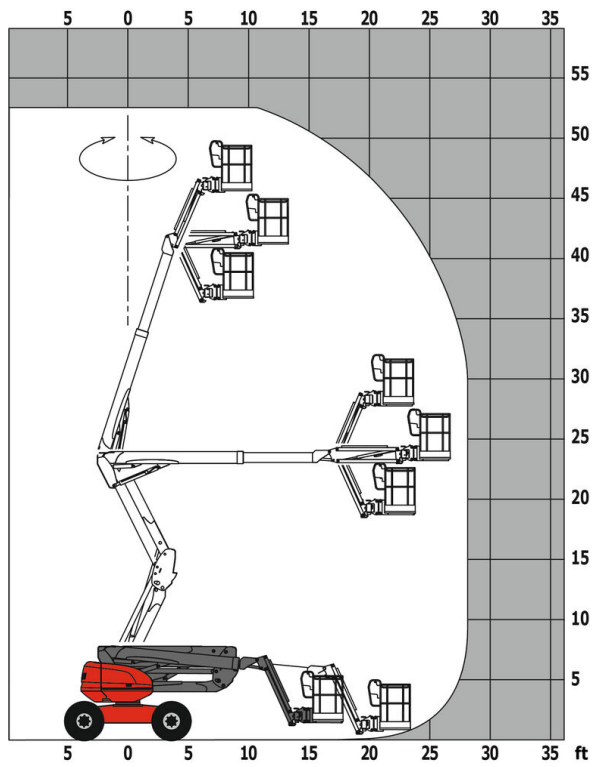
ATJ 46+



Capacities		Imperial
Working height	h21	52 ft 6 in
Platform height	h7	45 ft 6 in
Max. outreach	r1	28 ft 3 in
Overhang	h31	26 ft 8 in
Pendular arm rotation (bottom)		+66 °
Platform capacity	Q	899 lbs
Turret rotation		360 °
Platform rotation (left)		90 °
Weight and dimensions		
Platform weight*		18047 lbs
Platform dimensions (length x width)	lp / ep	7 ft 7 in x 2 ft 11 in
Overall width	b1	7 ft 7 in
Overall length	l1	22 ft 8 in
Overall height	h17	8 ft 10 in
Overall length (stowed)	l9	14 ft 9 in
Overall height (stowed)	h18	7 ft 9 in
Floor height (access)	h20	1 ft 4 in
Counterweight offset (turret at 90°)	a7	9 in
Internal turning radius (over tyres)	b13	4 ft 4 in
External turning radius	Wa3	12 ft
Ground clearance at centre of wheelbase	m2	1 ft 5 in
Wheelbase	y	7 ft 3 in
Performances		
Drive speed - stowed		4 mph
Drive speed - raised		1 mph
Gradeability		40 %
Wheels		
Tyres type		Foam-filled
Dimensions of front wheels / rear wheels		0,84 x 0,279 - 0,84 x 0,279
Drive wheels (front / rear)		2 / 2
Steering wheels (front / rear)		2 / 2
Braking wheels (front / rear)		0 / 2
Engine/Battery		
Engine brand / model		Kubota - D1803-CR
Engine nom		Tier 4 final
I.C. Engine power rating / Power (kW)		24.80 Hp / 18.50 kW
Miscellaneous		
Ground Pressure		139 PSI
Hydraulic Pressure		4931 PSI
Hydraulic tank capacity		14 US gal
Fuel tank		14 US gal
Noise to environment (LwA)		< 105 dB(A)
Standards compliance		
This machine is in compliance with:		ANSI A92.20-2018 CSA B354.6 ICES-002-Issue 6 Standard Canadian EMC

ATJ 46+ - Load chart

Load Chart for AWP Imperial



ATJ 46+ - Dimensional drawing

 ATJ 46+  ATJ 46+  ATJ 46+

Equipment

Standard

110 V plug with differential circuit breaker

4 simultaneous movements

4 wheel steer with crab mode

Additional storage boxes

Audible alarm and illuminated indicator lamp (leveling, overload, lowering)

Battery cut-off

CAN bus technology

Dead man pedal

Differential locking on rear axle

Drive safety orientation system

Easy Manager

Emergency stop button in platform and on frame

Front axle with limited slip

Fuel gauge with low level indicator

Galvanize basket mesh floor

Lift and drive

Lockable fuel cap

Management via engine speed bearing

Oscillating front axle

Pendular arm

Proportional controls

Protective cover for control panel

Steer and rotate

Swinging gate on platform

Tie down and lifting rings

Optional

Beep on every movement

Beep upon travel

Biodegradable oil

Cold weather kit

Extreme cold oil

Lockable turret cover

Onboard generator (5 kW)

SMS : Safe Man System

Working light



Siège Social

430 rue de l'Aubinière - 44150 Ancenis Cedex - France

Tel: +33(0)2 40 09 10 11 - Fax: +33 (0)2 40 09 10 97

www.manitou.com



This brochure describes versions and configuration options for Manitou products which may be fitted with different equipment. The equipment described in this brochure may be standard, optional or not available depending on version. Manitou reserves the right to change the specifications shown and described at any time and without prior warning. The manufacturer is not liable for the specifications given. For more information, contact your Manitou dealer. Non-contractual document. Product descriptions may differ from actual products. List of specifications is not comprehensive. The logos and visual identity of the company are the property of Manitou and may not be used without authorisation. All rights reserved. The photos and diagrams contained in this brochure are provided for information only.

MANITOU BF SA - Limited company with board of directors - Share capital: 39,668,399 euros - 857 802 508 RCS Nantes